

FEDERAL AID PROJECT NO.			
CONT	SECT	JOB	HIGHWAY
****	**	001	IH 35, ETC.
DIST	COUNTY		SHEET NO.
22	WEBB		1

INDEX OF SHEETS

SHEET NO.	DESCRIPTION
1	TITLE SHEET
2	LOCATION MAP
3	AREA 1&3-IH35-DC
4	AREA 2-US83-DC
5	AREA 4-IH35-DC
6	AREA 5-FM 1472-DC
7-8	GENERAL NOTES
9	ESTIMATE & QUANTITY SHEET
10-11	SUMMARY OF TRACTS AND QUANTITIES
12-13	SUMMARY OF TIME ALLOWANCE PER TRACT

STANDARD SHEETS

14	SWEEP-04
15	TCP(3-1)-13
16	TCP(3-2)-13

**STATE OF TEXAS
DEPARTMENT OF TRANSPORTATION**

**PLANS OF PROPOSED
STATE HIGHWAY IMPROVEMENT**

PROJECT NO. RMC:6472-21-001

**IH 35, HWY ETC.
WEBB COUNTY, etc.**

NET LENGTH OF PROJECT : VARIOUS
LIMITS : VARIOUS

FINAL PLANS

LETTING DATE: _____
DATE CONTRACTOR BEGAN WORK: _____
DATE WORK WAS COMPLETED & ACCEPTED: _____
FINAL CONTRACT COST: \$ _____
CONTRACTOR : _____

FOR THE CLEANING AND SWEEPING OF HIGHWAYS

THE STANDARD SHEETS SPECIFICALLY IDENTIFIED WITH A SINGLE ASTERISK(*) HAVE BEEN ISSUED BY ME OR UNDER MY RESPONSIBLE SUPERVISION AS BEING APPLICABLE TO THIS PROJECT.

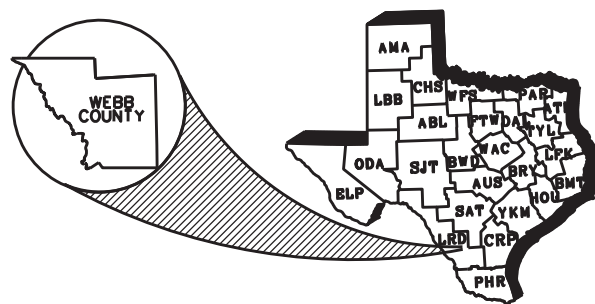
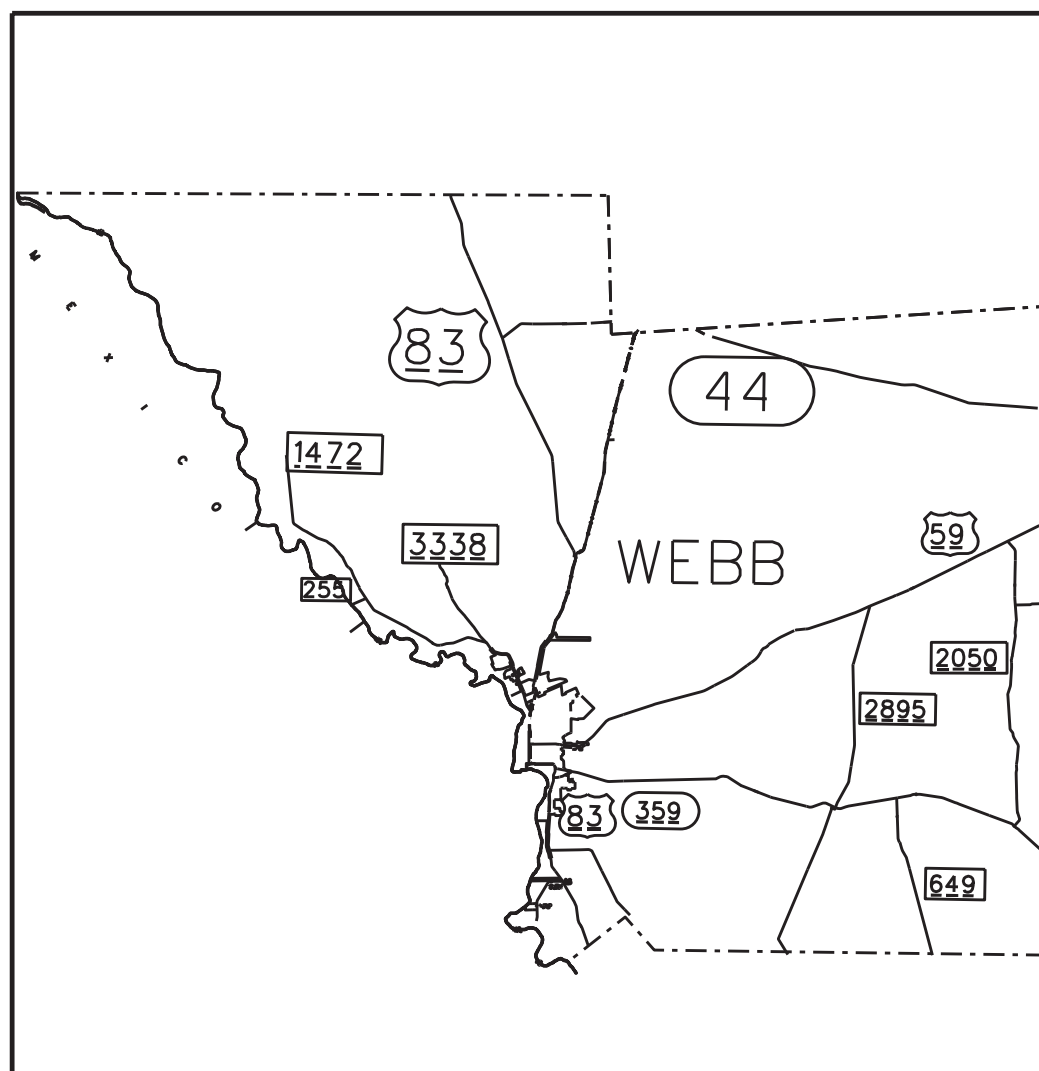
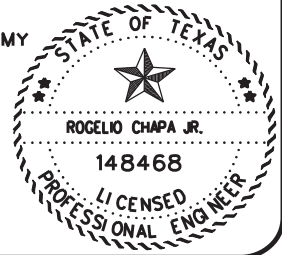
9/26/2024

DocuSigned by:

Rocelio Chapa

307945B8A8784F3...

JR, P.E.



EXCEPTIONS: NONE
EQUATIONS: NONE
RAILROAD CROSSINGS: NONE



RECOMMENDED FOR LETTING: 9/26/2024

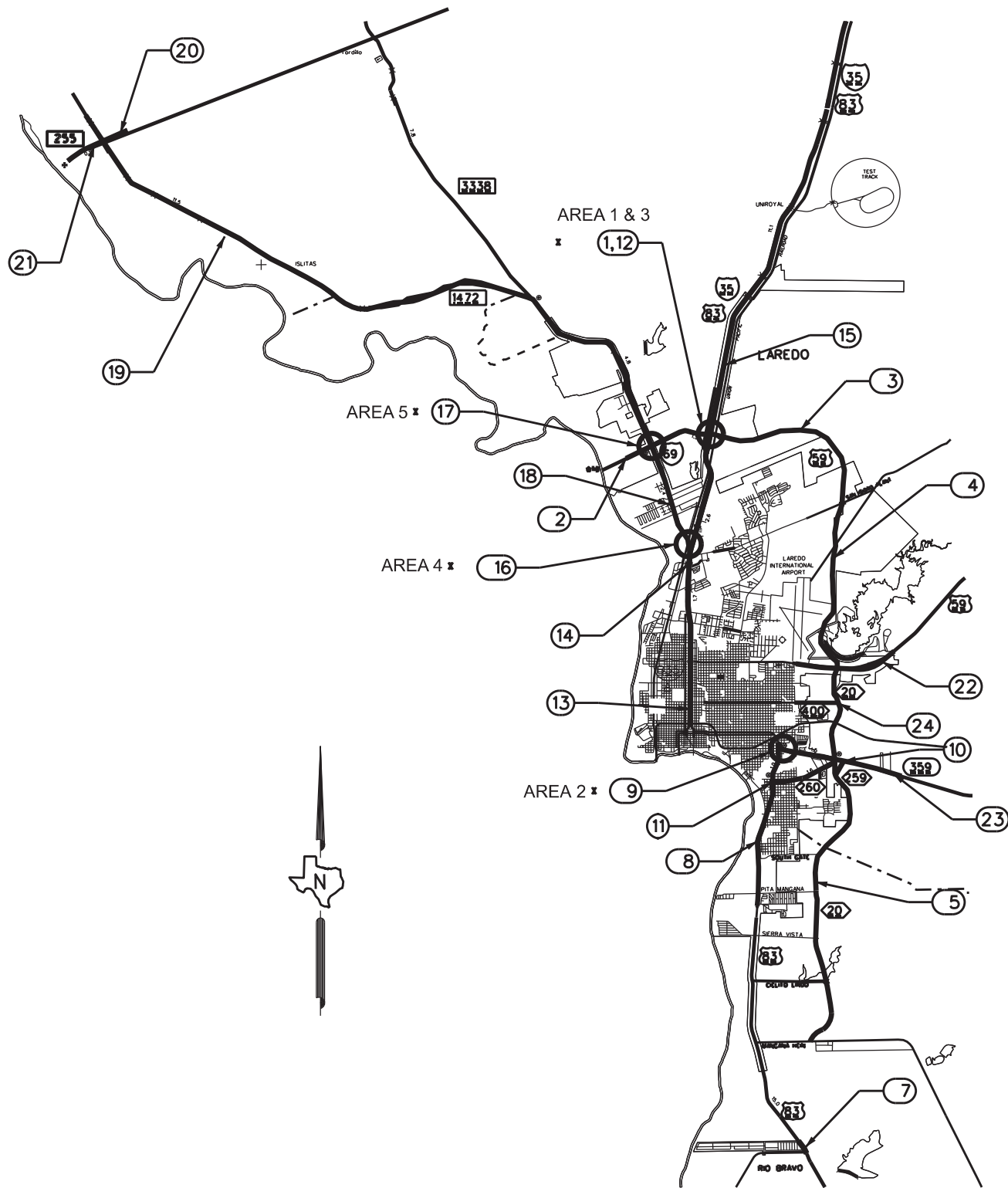
DocuSigned by: *[Signature]*
A54CD9F731724EC... ENGINEER

APPROVED FOR LETTING: 9/26/2024

DocuSigned by: *Vanessa Rosales-Herrera*
70CAB6EA8F3B42B... :E

SPECIFICATIONS ADOPTED BY THE TEXAS DEPARTMENT OF TRANSPORTATION, SEPTEMBER 1, 2024 AND SPECIFICATION ITEMS LISTED AND DATED AS FOLLOWS, SHALL GOVERN ON THIS PROJECT: SPECIAL LABOR PROVISIONS FOR STATE PROJECTS (000-008)

CAC
 DWG
 CAC
 Dwg

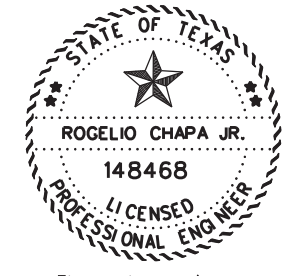


DIRECT CONNECTOR	TRACT #	HWY	LIMITS
* AREA 1	1	IH 35	(AREA 1) Direct Connector from IH 35 NB to IH 69 WB
		IH 35	(AREA 1) Direct Connector from IH 35 SB to IH 69 WB
		IH 69	(AREA 1) Direct Connector from IH 35 EB to IH 69 NB
	21	IH 69	From: GSA Facility (World Trade Bridge) To: IH 35 W. Frontage
	3	US 59	From: IH 35 E Frontage To: 0.5 MI. E. of San Isidro Plant Entrance
	4	US 59	From: 0.5. MI. E of San Isidro Plant Entrance To: SL 20 / BU 59
	5	SL 20	From: BU 59 / US 59 To: Cielito Lindo
	6	SL 20	From: Cielito Lindo To: Magana Hein Road
	7	US 83 S	Rio Bravo Espejo Molina Overpass
	8	US 83 S	From: Market St. To: South Gate Entrance
* AREA 2	9	US 83 S	Direct Connectors on US 83 / SH 359 Intersection (Includes 4 DCs)
	10	SS 259	From: SH 359 To: SL 20
	11	SS 260	From: SL 20 / SH 359 Intersection To: US 83 (Zapata Highway)
* AREA 3	12	IH 69/ US 59	From IH 69- EB & WB To: US 59 - EB & WB
	13	IH 35	From: MP 1-.66 (Hidalgo St.) To: MP7 (Before IH 35 / SL 20 Interchange)
	14	IH 35	From: MP7 To: MP 8 (After SL 20 /IH 35 Interchange)
	15	IH 35	From: : MP 8 To: (Uniroyal overpass)
* AREA 4	16	IH 35	Direct Connectors From: IH 35 (Northbound) To: FM 1472 (Westbound)
		FM 1472	Direct Connectors From: FM 1472 (Eastbound) To: IH 35 (Southbound)
* AREA 5	17	FM 1472	Direct Connector From: FM 1472-SB To: IH 69 / US 59- EB
	18	FM 1472	From: DelMar To: 3.5 miles NW (RM 438)
	19	FM 1472	From: RM 438 To: RM 422
	20	SH 255	From: FM 1472 To : GSA Facility (Colombia Solidarity Bridge)
	21	SH 255	From: FM 1472 To: Industrial Blvd. (Going East from FM 1472)
	22	US 59	From: Ejido St. To: RM 824
	23	SH 359	From: US 83 South To: End of 5 lane road
	24	SS 400	From: SL 20 To: Arkansas Ave.

LEGEND

○ DIRECT CONNECTOR AREA

- * NOTE:
- AREA1- SEE SHEET 3 FOR MORE DETAIL INFORMATION
- AREA2- SEE SHEET 4 FOR MORE DETAIL INFORMATION
- AREA3- SEE SHEET 3 FOR MORE DETAIL INFORMATION
- AREA4- SEE SHEET 5 FOR MORE DETAIL INFORMATION
- AREA5- SEE SHEET 6 FOR MORE DETAIL INFORMATION



The seal appearing on this document was authorized by
ROGELIO CHAPA JR.
 9/26/2024 on

DocuSigned by:

 307945B8A8784F3...

DATE: 9/19/2024 2:38:31 PM
 FILE: T:\LRDDST\TNT\FY 2025\INT Contract (FY25)\RMC\Cleaning and Sweeping of Highways (Webb)\PlanSheet.dgn



SWEeping LOCATION MAP

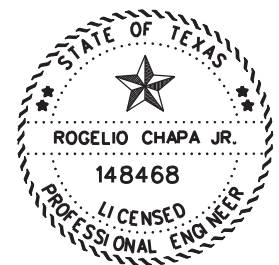
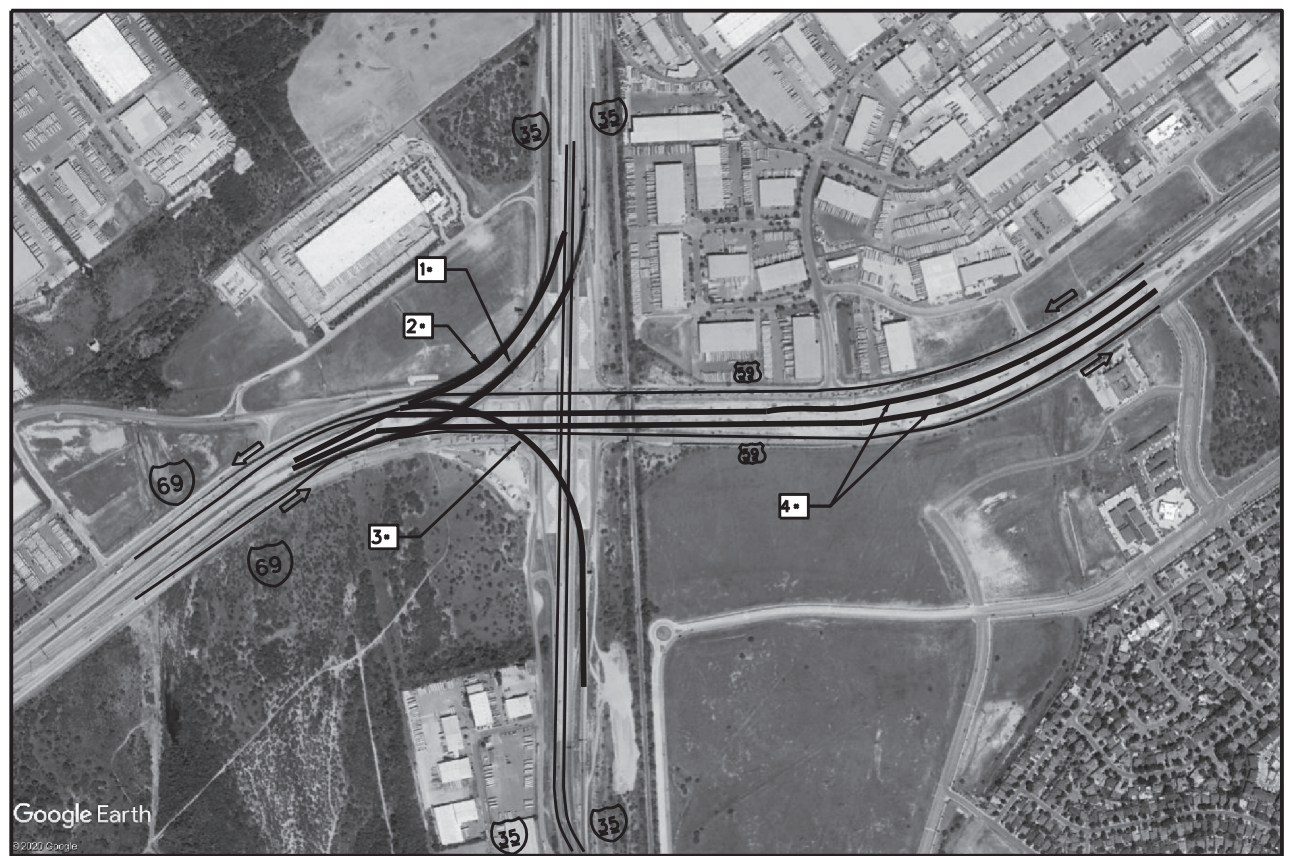
© TxDOT 2024		SHEET 1 OF 1	
CONT	SECT	JOB	HIGHWAY
****	**	001	IH 35, ETC.
DIST	COUNTY	SHEET NO.	
22	WEBB	2	

CAC
 DWG
 CAC
 Dwg

(AREA 1) -DIRECT CONNECTORS					
TRACT	LOCATION	HIGHWAY	LIMITS		LENGTH MI.
			FROM	TO	
1	1•	IH35	IH35-NB	IH69-WB	0.6
	2•	IH35	IH35-SB	IH69-WB	0.5
	3•	IH69	IH69-EB	IH35-NB	0.6
TOTAL					1.7

(AREA 3) -DIRECT CONNECTORS					
TRACT	LOCATION	HIGHWAY	LIMITS		LENGTH MI.
			FROM	TO	
12	4•	IH69/US 59	IH69 - EB & WB	US59 - EB & WB	4.4
TOTAL					4.4

LEGEND
 TRAFFIC FLOW



The seal appearing on this document was authorized by
ROGELIO CHAPA JR.
 P.E. 148468, on
 9/26/2024

DocuSigned by:

 307945B8A8784F3...

DATE: 9/19/2024 2:38:31 PM
 FILE: T:\LRDSD\TMT\FY 2025\MINT Contract (FY25)\RMC\Cleaning and Sweeping of Highways (Webb)\PlanSheet.dgn

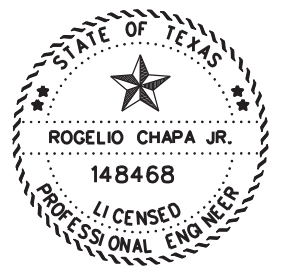


(AREA 1 & AREA 3)
 IH35-DIRECT CONNECTOR
 LAYOUT DETAILS

© TxDOT 2024		SHEET 1 OF 1	
CONT	SECT	JOB	HIGHWAY
****	**	001	IH 35, ETC.
DIST	COUNTY	SHEET NO.	
22	WEBB	3	

CAC
 DWG
 CAC
 Dwg

(AREA 2) - DIRECT CONNECTORS						
TRACT	LOCATION	HIGHWAY	LIMITS		LENGTH MI.	REMARKS
			FROM	TO		
9	1•	SH359	SH359-WB	US83-NB	0.2	
	2•	SH359	SH359-WB	US83-SB	0.2	
	3•	US83	US83-SB	SH359-EB	0.4	
	4•	US83	US83-SB	SH359-EB	0.2	FRONTAGE RD
TOTAL					1.0	



The seal appearing on this document was authorized by
ROGELIO CHAPA JR.
 P.E. 148468, on
 9/26/2024

DocuSigned by:

 307945B8A8784F3...



(AREA 2)
 US83-DIRECT CONNECTOR
 LAYOUT DETAILS

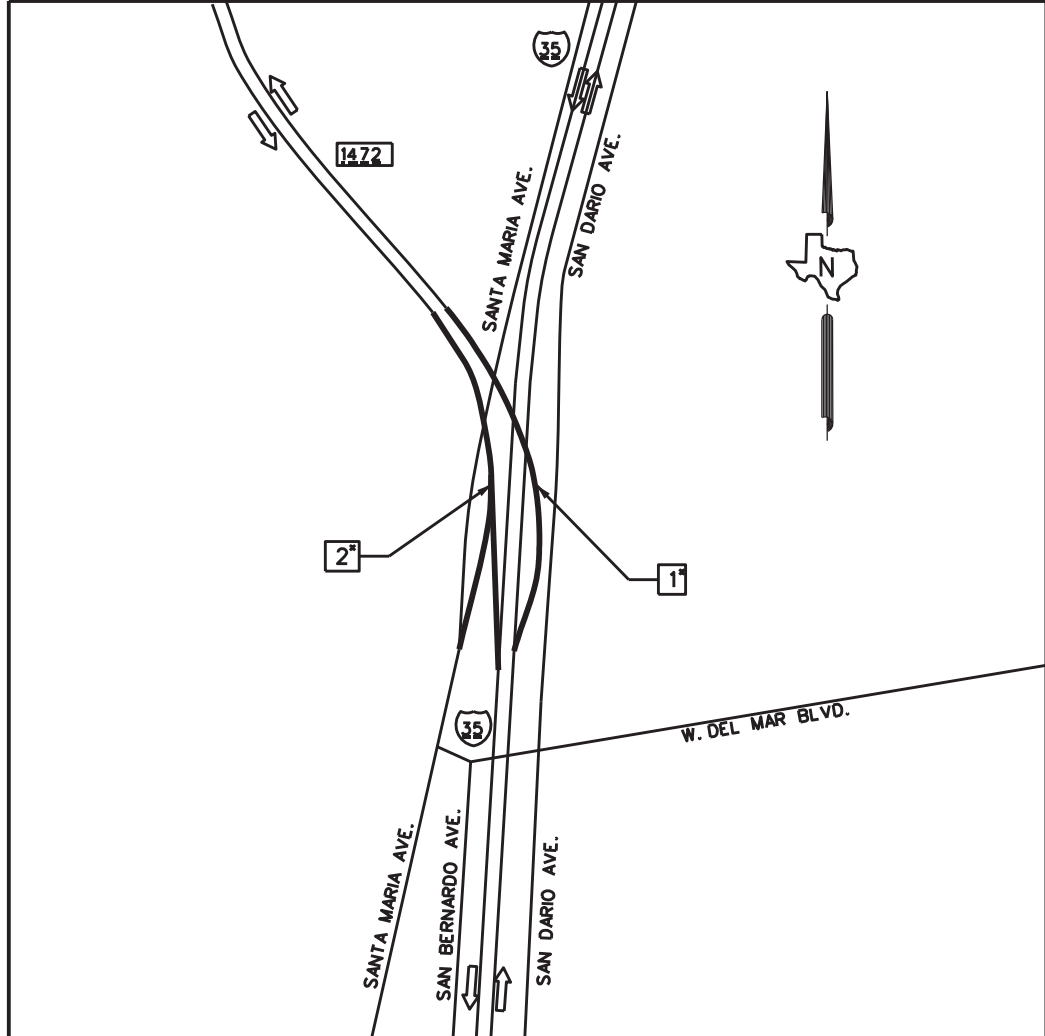
© TxDOT 2024 SHEET 1 OF 1

CONT	SECT	JOB	HIGHWAY
****	**	001	IH 35, ETC.
DIST	COUNTY	SHEET NO.	
22	WEBB	4	

DATE: 9/19/2024 2:38:32 PM
 FILE: T:\LRD\STMT\TY 2025\MINT Contract (FY25)\RMC\Cleaning and Sweeping of Highways (Webb)\PlanSheet.dgn

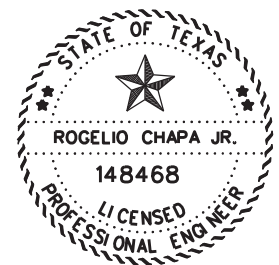
Dwg:
 Csk:
 Dwg:
 Csk:

DATE: 9/19/2024 2:38:33 PM
 FILE: T:\LRDSD\TMT\FY 2025\MINT Contract (FY25)\RMC\Cleaning and Sweeping of Highways (Webb)\PlanSheet.dgn



LEGEND
 TRAFFIC FLOW

TRACT	LOCATION	HIGHWAY	LIMITS		LENGTH MI.
			FROM	TO	
16	1*	IH35	IH35-NB	FM1472-WB	0.81
	2*	FM 1472	FM1472-EB	IH35-SB	0.69
TOTAL					1.5



The seal appearing on this document was authorized by
ROGELIO CHAPA JR.
 PE 148468
 9/26/2024

DocuSigned by:

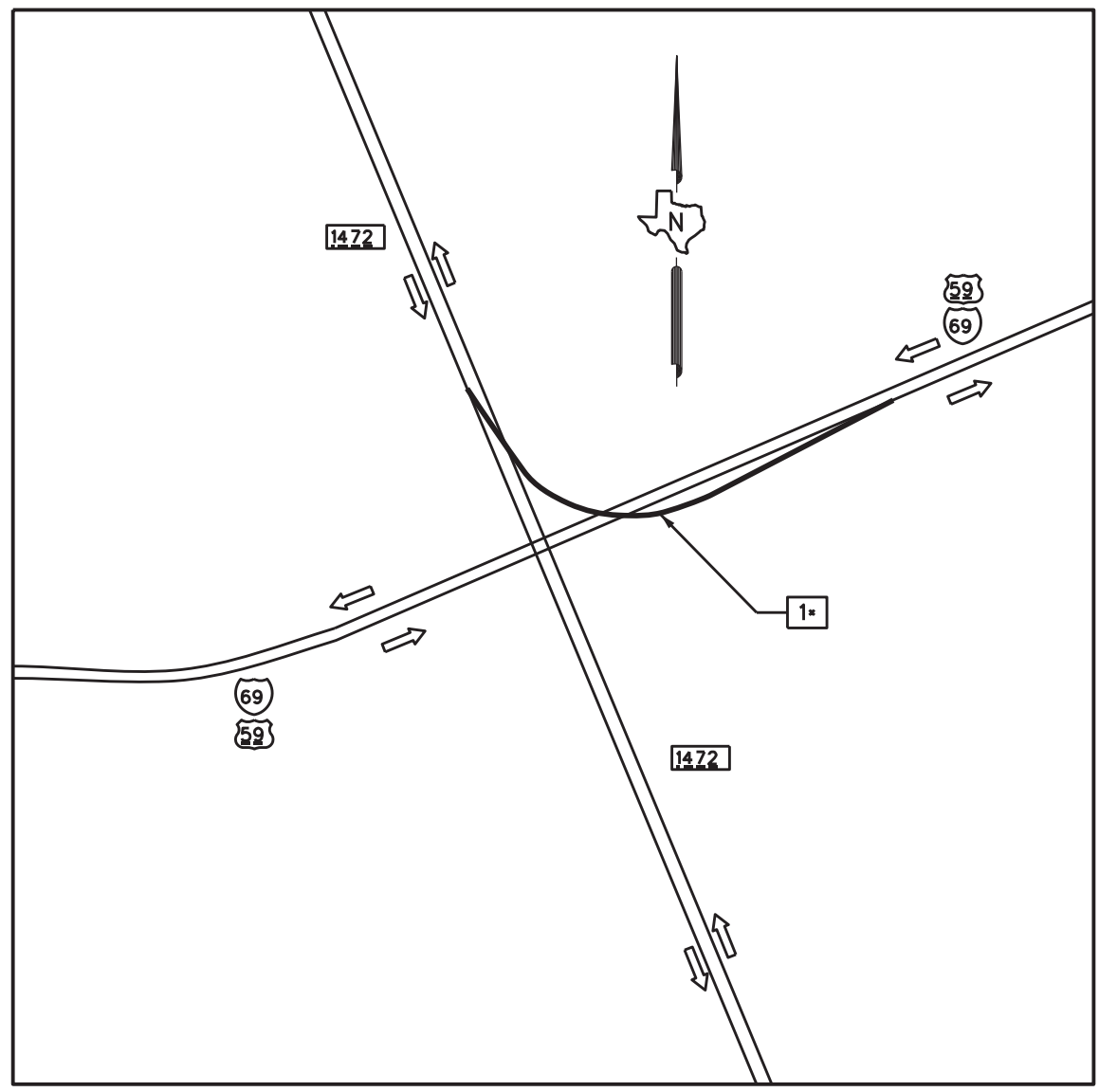
 307945B8A8784F3...



(AREA 4)
 IH35-DIRECT CONNECTOR
 LAYOUT DETAILS

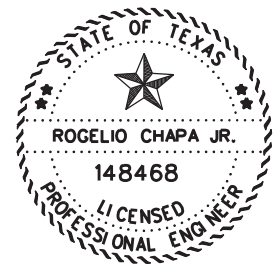
© TxDOT 2024		SHEET 1 OF 1	
CONT	SECT	JOB	HIGHWAY
****	**	001	IH 35, ETC.
DIST	COUNTY	SHEET NO.	
22	WEBB	5	

Dwg:
 Csk:
 Dwg:
 Csk:



LEGEND
 TRAFFIC FLOW

(AREA 5) -DIRECT CONNECTORS					
TRACT	LOCATION	HIGHWAY	LIMITS		LENGTH MI.
			FROM	TO	
20	1	FM 1472	FM1472-SB	IH69/US59-EB	0.79
TOTAL					0.79



The seal appearing on this document was authorized by
ROGELIO CHAPA JR.
 P.E. 148468, on
 9/26/2024

DocuSigned by:

 307945B8A8784F3...

DATE: 9/19/2024 2:38:33 PM
 FILE: T:\LRDSD\TINT\FY 2025\TINT Contract (FY25)\RMC\Cleaning and Sweeping of Highways (Webb)\PlanSheet.dgn



(AREA 5)
 FM1472-DIRECT CONNECTOR
 LAYOUT DETAILS

© TxDOT 2024 SHEET 1 OF 1

CONT	SECT	JOB	HIGHWAY
****	**	001	IH 35, ETC.
DIST	COUNTY	SHEET NO.	
22	WEBB	6	

Project Number: RMC: 6472-21-001

County: Webb

Highway: IH 35, ETC.

Control: 6472-21-001

GENERAL NOTES:

This contract becomes effective upon issuance of a Work Order by the Engineer and covers one (1) year. Provide sufficient staff to concurrently pursue each contract in the event that additional sweeping contracts are awarded to the same contractor.

Contractor questions on this project are to be addressed to the following individual(s):

Rogelio Chapa, P.E. – Rogelio.Chapa@txdot.gov
Irazema Cavazos – Irazema.Cavazos@txdot.gov
Angel Alejo – Angel.Alejo@txdot.gov

Questions may be submitted via the Letting Pre-Bid Q&A web page. This webpage can be accessed from the Notice to Contractors dashboard located at the following Address:

<https://tableau.txdot.gov/views/ProjectInformationDashboard/NoticetoContractors>

All contractor questions will be reviewed by the Engineer. All questions and any corresponding responses that are generated will be posted through the same Letting Pre-Bid Q&A web page.

The Letting Pre-Bid Q&A web page for each project can be accessed by using the dashboard to navigate to the project you are interested in by scrolling or filtering the dashboard using the controls on the left. Hover over the blue hyperlink for the project you want to view the Q&A for and click on the link in the window that pops up.

Provide and maintain an e-mail address for receipt of Work Order and correspondence throughout the term of this contract.

Repair and/or replace damaged rails, signposts, etc., caused by the Contractor's actions during the performance of work. Complete repairs within a time limit as determined by the Engineer.

If agreed upon in writing by both parties to the contract, the contract may be extended for an additional period of time, not to exceed the original contract time period. The extended contract shall be for the original bid quantities, terms, and conditions, plus any approved applicable change orders.

When the contract is extended by agreement, a performance and/or payment bond, if required, shall be executed in the amount of the extension before the additional work begins.

Project Number: RMC: 6472-21-001

County: Webb

Highway: IH 35, ETC.

SHEET 7

Control: 6472-21-001

SUPERVISION:

The Engineer's representative in charge of all work in this contract is the Maintenance Supervisor listed below. The Pre-Work Meeting will be held at this location and all requests for payment are certified by this office.

For this project, the Maintenance Supervisor in charge is:

Webb County
Jose Magana
1817 Bob Bullock Loop
Laredo, TX, 78043
(956) 712-7714

Employees are required to wear proper safety equipment. Contractor is responsible for supplying proper safety equipment for employees.

Work must commence within one week of Work Order letter to Contractor. Work per tract has to be completed in the number of days listed on the summary of tracts and quantities sheet (weather permitting) or less. Contractor must work continuously to complete items on tracts called out (with exception of Saturdays, Sundays, or National Holidays) unless approved by the Maintenance Supervisor. Approval by Maintenance Supervisor for non continued work on tracts does not relieve Contractor from completing work by original tract completion date.

Liquidated damages will be assessed per work order(s) which exceed the total allocated workdays for tracts assigned on work order. In the event that job performance is not to the satisfaction of the Engineer, sub marginal work is subject to special provision "Schedule of Liquidated Damages".

LIMITS:

Cover the roadways and limits as shown on the plans.

ITEM 8 PROSECUTION AND PROGRESS

Roadway closures during the following key dates and/or special events are prohibited: January 1, Easter weekend, the last Monday in May, July 4, the first Monday in September, the fourth Thursday in November, and December 25 and Easter weekend.

Working days will be computed and charged in accordance with Article 8.3.1.4 Calendar Day.

Project Number: RMC: 6472-21-001

County: Webb

Control: 6472-21-001

Highway: IH 35, ETC.

ITEM 502 BARRICADES, SIGNS AND TRAFFIC HANDLING:

Designate, as the Contractor Responsible Person (CRP), an English-speaking employee on-call nights and weekends (or any other time that work is not in progress) with a local address and telephone number for maintenance of signs and barricades. This employee will be located within one (1) hour of traveling time to the project site. Notify the Engineer in writing of the name, address, and telephone number of this employee. Furnish traffic control devices that conform to all current “Traffic Control Plan Standards” (TCPS) and the current Texas Manual on Uniform Traffic Control Devices (MUTCD). Provide a truck-mounted attenuator (TMA) for the shadow vehicle when sweeper is obstructing any portion of travel lane. Leave one lane open for existing traffic. Include trail and lead vehicles per traffic standards.

ITEM 505 TRUCK MOUNTED ATTENUATOR (TMA) AND TRAILER:

Provide 2 Truck Mounted Attenuator as required by the Engineer. Provide backup and always keep operational and available on the jobsite at all times during traffic control operations. The Truck Mounted Attenuator will be made available for the entire duration of the project, including all alternative locations.

TCP 3 Series	Scenario	Required TMA
(3-1)-13	All	2
(3-2)-13	All	3

ITEM 738 CLEANING AND SWEEPING HIGHWAYS

Disposal of any collected debris at the local landfill is mandatory and no exceptions will be allowed.

Provide a minimum of 2 fully operational sweepers during each scheduled working day for this contract. No exceptions will be considered without a written request.

Loose aggregate accumulated by traffic barrier, raised medians, rail, etc. will be removed from the roadway. This work will be considered incidental To Item 738, “Cleaning and Sweeping Highways”.



CONTROLLING PROJECT ID 6472-21-001

DISTRICT Laredo
HIGHWAY IH0035

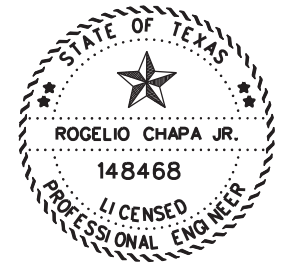
COUNTY Webb

Estimate & Quantity Sheet

CONTROL SECTION JOB				6472-21-001		TOTAL EST.	TOTAL FINAL
PROJECT ID				A00211838			
COUNTY				Webb			
HIGHWAY				IH0035			
ALT	BID CODE	DESCRIPTION	UNIT	EST.	FINAL		
	505-7003	TMA (MOBILE OPERATION)	DAY	560.000		560.000	
	738-7001	CLEANING / SWEEPING (CENTER MEDIAN)	MI	1,511.900		1,511.900	
	738-7025	CLEANING / SWEEPING (OUTSIDE MAIN LANE)	MI	1,163.900		1,163.900	
	738-7049	CLEANING / SWEEPING (FRONTAGE ROAD)	MI	249.600		249.600	
	738-7070	CLEANING / SWEEPING(ENTRANCE/EXIT RAMP)	MI	106.200		106.200	
	738-7093	CLEAN/SWEEPING-DIRECT CONNECT-AREA(1)	CYC	12.000		12.000	
	738-7094	CLEAN/SWEEPING-DIRECT CONNECT-AREA(2)	CYC	24.000		24.000	
	738-7095	CLEAN/SWEEPING-DIRECT CONNECT-AREA(3)	CYC	12.000		12.000	
	738-7096	CLEAN/SWEEPING-DIRECT CONNECT-AREA(4)	CYC	24.000		24.000	
	738-7097	CLEAN/SWEEPING-DIRECT CONNECT-AREA(5)	CYC	12.000		12.000	

CAC
 DWG
 CAC
 DWG

SUMMARY OF TRACTS AND QUANTITIES											
TRACT	HWY	LIMITS	738-7001	738-7025	738-7049	738-7070	738-7093	738-7094	738-7095	738-7096	738-7097
			CLEANING SWEEPING (CENTER MEDIAN) MI	CLEANING SWEEPING (OUTSIDE MAINLANE) MI	CLEANING SWEEPING (FRONTAGE ROAD) MI	CLEANING SWEEPING (ENTRANCE/EXIT RAMP) MI	CLEAN / SWEEPING DIRECT CONNECT AREA (1) CYC	CLEAN / SWEEPING DIRECT CONNECT AREA (2) CYC	CLEAN / SWEEPING DIRECT CONNECT AREA (3) CYC	CLEAN / SWEEPING DIRECT CONNECT AREA (4) CYC	CLEAN / SWEEPING DIRECT CONNECT AREA (5) CYC
1	IH 35	(AREA 1) Direct Connector from IH 35 NB to IH 69 WB									
	IH 35	(AREA 1) Direct Connector from IH 35 SB to IH 69 WB					12.0				
	IH 69	(AREA 1) Direct Connector from IH 35 EB to IH 69 NB									
2	IH 69	From: GSA Facility (World Trade Bridge) To: IH 35 W. Frontage (includes uncurbed shoulders and FM 1472 Cross road and turn arounds; 6 ramps).	21.6	21.6	24.0	15.0					
3	US 59	From: IH 35 E Frontage Road To: 0.5 MI. E. of San Isidro Plant Entrance (Includes McPherson and International Cross roads and turn arounds).	28.8	28.8	15.6						
4	US 59	From: 0.5 MI. E of San Isidro Plant Entrance To: SL 20 / BU 59 (Includes cross roads and turn arounds).	66.0	66.0	2.4	2.4					
5	SL 20	From: BU 59 / US 59 To: Cielito Lindo including multiple cross-overs and turnarounds.	81.6	81.6	36.0	4.8					
6	SL 20	From: Cielito Lindo To: Magana Hein Road- (approx. 2 miles).	27.6	27.6							
7	US 83 S	Rio Bravo Interchange including main lanes, frontage roads, underpasses, intersection, and uncurbed shoulders (RM 728 to RM 730)	15.6	15.6	12.0	6.0					
8	US 83 S	From: Market St. To: South Gate Entrance (RM 719 to RM 722)	38.4	38.4	4.8	2.4					
9	US 83 S	(AREA 2) Direct Connectors on US 83 / SH 359 Intersection (Includes 4 DCs, crossover and uncurbed shoulders)						24.0			
10	SS 259	From: SH 359 To: SL 20 (2000 ft South of Sh 359)	4.8	4.8							
11	SS 260	From: SL 20 / SH 359 Intersection To: US 83 (Zapata Highway)	19.2	19.2							
12	IH 69/ US 59	(AREA 3) Direct Connector from IH 69- EB & WB To: US 59 - EB & WB							12.0		
SUB-TOTAL			303.6	303.6	94.8	30.6	12.0	24.0	12.0	-	-



The seal appearing on this document was authorized by
ROGELIO CHAPA JR.
 P.E. 148468, on
 9/26/2024

DocuSigned by:

 307945B8A8784F3...

Notes:

The quantity shown accounts for a one year period of work.

The Maintenance Supervisor will issue Work Order(s) to Contractor when sweeping is required, and will identify which tracts are to be swept.



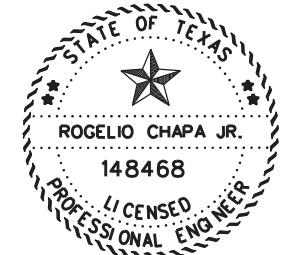
SUMMARY OF TRACTS AND QUANTITIES (1-2)

© TxDOT 2024		SHEET 1 OF 2	
CONT	SECT	JOB	HIGHWAY
****	**	001	IH 35, ETC.
DIST	COUNTY	SHEET NO.	
22	WEBB	10	

DATE: 9/19/2024 2:38:34 PM
 FILE: T:\LRD\STMT\FY 2025\MINT Contract (FY25)\RMC\Cleaning and Sweeping of Highways (Webb)\PlanSheet.dgn

CAC
DWI
CIC
DNE

SUMMARY OF TRACTS AND QUANTITIES											
TRACT	HWY	LIMITS	738-7001	738-7025	738-7049	738-7070	738-7093	738-7094	738-7095	738-7096	738-7097
			CLEANING SWEEPING (CENTER MEDIAN)	CLEANING SWEEPING (OUTSIDE MAINLANE)	CLEANING SWEEPING (FRONTAGE ROAD)	CLEANING SWEEPING (ENTRANCE/EXIT RAMP)	CLEAN / SWEEPING DIRECT CONNECT AREA (1)	CLEAN / SWEEPING DIRECT CONNECT AREA (2)	CLEAN / SWEEPING DIRECT CONNECT AREA (3)	CLEAN / SWEEPING DIRECT CONNECT AREA (4)	CLEAN / SWEEPING DIRECT CONNECT AREA (5)
			MI	MI	MI	MI	CYC	CYC	CYC	CYC	CYC
13	IH 35	From: MP 1-.34 (Hidalgo St.) To: MP7 (S of Milo Interchange) Includes 14 crossroads & turn around; plus 4 block area beginning IH 35	672.0	336.0	67.2	38.4					
14	IH 35	From:MP7 (S of Milo Interchange) To: MP 8 (N of Milo Interchange) Includes SL 20-W Frontage, SL 20 E- Fronatge crossroads, turn arounds & uncurbed shoulders	33.6	21.6	10.8	9.6					
15	IH 35	From: : MP 8 (N of Milo Interchange) To: MP 13.5 (Uniroyal overpass) Includes Tres Equis, Carriers, and Uniroyal crossroads bridges & turn arounds, and street turnout (TxDot MNT Right of Way Limits)	64.8	64.8	60.0	27.6					
16	IH 35	(AREA 4) Direct Connectors From: IH 35 - NB To: FM 1472 WB- (FM 1472 RR Separation Overpass Northbound on ramp included)								24.0	
	FM 1472	(AREA 4) Direct Connectors From:1472 EB-To: IH 35 SB (FM 1472 RR Separation OverpasSouthbound on ramp included)									
17	FM 1472	(AREA 5) Direct Connector From: FM 1472-SB To: IH 69 / US 59- EB									12.0
18	FM 1472	From: DelMar To: 3.5 miles NW Pan American	84.0	84.0	16.8						
19	FM 1472	From: RM 438 To: RM 422 (includes only 18 bridges (10 NB and 8 SB). 2 DPS scales site (1NB & 1 SB w/ 40ft wide each) plus a striped island approx. 1 Mile South of RM 422)	84.0	84.0							
20	SH 255	From: FM 1472 To : GSA Facility (Colombia Solidarity Bridge) including crossover	11.3	11.3							
21	SH 255	From: FM 1472 To: Industrial Blvd. (Going East from FM 1472	6.2	6.2							
22	US 59	From: Ejido St. To: RM 824	39.6	39.6							
23	SH 359	From: RM 432 (US 83S.) To: RM 439 (End of 5 lane road) including white hedges and uncurbed shoulders	148.8	148.8							
24	SS 400	From: SL 20 (Bod Bullocke.) To: Arkansas Ave.	14.0	14.0							
25	VARIOUS	Additional cycles needed on Tracts 1 through 24	50.0	50.0							
SUB-TOTAL			1208.3	860.3	154.8	75.6	-	-	-	24.0	12.0
TOTAL			1511.9	1163.9	249.6	106.2	12.0	24.0	12.0	24.0	12.0



The seal appearing on this document was authorized by
ROGELIO CHAPA JR.
 P.E. 148468, on
 9/26/2024

DocuSigned by:

 307945B8A8784F3...

Notes:

The quantity shown accounts for a one year period of work.

The Maintenance Supervisor will issue Work Order(s) to Contractor when sweeping is required, and will identify which tracts are to be swept.

Texas Department of Transportation

SUMMARY OF TRACTS AND QUANTITIES (2-2)

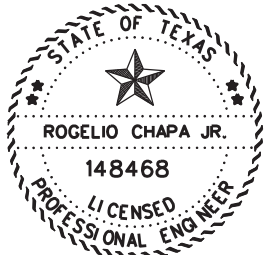
© TxDOT 2024 SHEET **2** OF **2**

CONT	SECT	JOB	HIGHWAY
****	**	001	IH 35, ETC.
DIST	COUNTY	SHEET NO.	
22	WEBB	11	

DATE: 9/19/2024 2:38:34 PM
 FILE: T:\LRD\STMT\NT\FY 2025\MNT Contract (FY25)\RMC\Cleaning and Sweeping of Highways (Webb)\PlanSheet.dgn

CAC
 DWG
 CAC
 DWG

SUMMARY OF TIME ALLOWANCE PER TRACT										
TRACT	HWY	LIMITS	TRACT TIME ALLOWANCE (DAY)	ESTIMATED # OF TIMES SWEEPING NEEDED (EA)	APPROX. ROADWAY LENGTH (CENTER) (CL MILES)	Approx. ROADWAY LENGTH (OUTSIDE) (CL MILES)	APPROX. FRONT AGE ROAD LENGTH (CL MILES)	APPROX. RAMP LENGTH (CL MILES)	APPROX. DIRECT CONNECT OR LENGTH (CL MILES)	TRACT SUM TOTAL (CL MILES)
1	IH 35	(AREA 1) Direct Connector from IH 35 NB to IH 69 WB	0.25	12	0.0	0.0	0.0	0.0	0.6	0.6
	IH 35	(AREA 1) Direct Connector from IH 35 SB to IH 69 WB	0.25	12	0.0	0.0	0.0	0.0	0.5	0.5
	IH 69	(AREA 1) Direct Connector from IH 35 EB to IH 69 NB	0.25	12	0.0	0.0	0.0	0.0	0.6	0.6
2	IH 69	From: GSA Facility (World Trade Bridge) To: IH 35 W. Frontage (includes uncurbed shoulders and FM 1472 Cross road and turn arounds; 6 ramps).	1.00	12	1.8	1.8	2.0	1.3	0.0	6.9
3	US 59	From: IH 35 E Frontage Road To: 0.5 MI. E. of San Isidro Plant Entrance (Includes McPherson and International Cross roads and turn arounds).	1.00	12	2.4	2.4	1.3	0.0	0.0	6.1
4	US 59	From: 0.5 MI. E of San Isidro Plant Entrance To: SL 20 / BU 59 (Includes cross roads and turn arounds).	0.50	12	5.5	5.5	0.2	0.2	0.0	11.4
5	SL 20	From: BU 59 / US 59 To: Cielito Lindo including multiple cross-overs and turnarounds.	1.50	12	6.8	6.8	3.0	0.4	0.0	17.0
6	SL 20	From: Cielito Lindo To: Magana Hein Road- (approx. 2 miles).	0.50	12	2.3	2.3	0.0	0.0	0.0	4.6
7	US 83 S	Rio Bravo Interchange including main lanes, frontage roads, underpasses, intersection, and uncurbed shoulders (RM 728 to RM 730)	0.50	12	1.3	1.3	1.0	0.5	0.0	4.1
8	US 83 S	From: Market St. To: South Gate Entrance (RM 719 to RM 722)	1.00	12	3.2	3.2	0.4	0.2	0.0	7.0
9	US 83 S	(AREA 2) Direct Connectors on US 83 / SH 359 Intersection (Includes 4 DCs, crossover and uncurbed shoulders)	0.50	12	0.0	0.0	0.0	0.0	0.9	0.9
10	SS 259	From: SH 359 To: SL 20 (2000 ft South of Sh 359)	0.25	12	0.4	0.4	0.0	0.0	0.0	0.8
11	SS 260	From: SL 20 / SH 359 Intersection To: US 83 (Zapata Highway)	0.50	12	1.6	1.6	0.0	0.0	0.0	3.2
12	IH 69/ US 59	(AREA 3) Direct Connector from IH 69- EB & WB To: US 59 - E	0.25	12	2.2	2.2				4.4
TOTAL			8.3		27.5	27.5	7.9	2.6	2.6	68.1



The seal appearing on this document was authorized by
ROGELIO CHAPA JR.
 8/26/2024

DocuSigned by:
Rogelio Chapa
 307945B8A8784F3...

DATE: 9/19/2024 2:38:34 PM
 FILE: T:\LRDSD\TMT\FY 2025\MINT Contract (FY25)\RMC\Cleaning and Sweeping of Highways (Webb)\PlanSheet.dgn

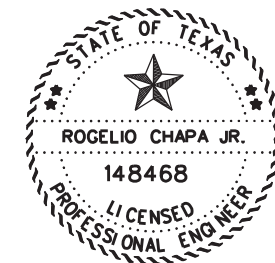
SUMMARY OF TIME ALLOWANCE PER TRACT (1-2)

© TxDOT 2024 SHEET **1** OF **2**

CONT	SECT	JOB	HIGHWAY
****	**	001	IH 35, ETC.
DIST	COUNTY	SHEET NO.	
22	WEBB	12	

CAC
 DWG
 CAC
 DWG

SUMMARY OF TIME ALLOWANCE PER TRACT										
TRACT	HWY	LIMITS	TRACT TIME ALLOWANCE (DAY)	ESTIMATED # OF TIMES SWEEPING NEEDED (EA)	APPROX. ROADWAY LENGTH (CENTER) (CL MILES)	Approx. ROADWAY LENGTH (OUTSIDE) (CL MILES)	APPROX. FRONT AGE ROAD LENGTH (CL MILES)	APPROX. RAMP LENGTH (CL MILES)	APPROX. DIRECT CONNECT OR LENGTH (CL MILES)	TRACT SUM TOTAL (CL MILES)
13	IH 35	From: MP 1-.66 (Hidalgo St.) To: MP7 (S of Milo Interchange) Includes 14 crossroads & turn around; plus 4 block area beginning IH 35	1.00	SEE NOTES	7.0	7.0	5.6	3.2		22.8
14	IH 35	From: MP7 (S of Milo Interchange) To: MP 8 (N of Milo Interchange) Includes SL 20-W Frontage, SL 20 E- Fronatge crossroads, turn arounds & uncurbed shoulders	0.50	12	1.4	1.4	0.9	0.8		4.5
15	IH 35	From: : MP 8 (N of Milo Interchange) To: MP 13.5 (Uniroyal overpass) Includes Tres Equis, Carriers, and Uniroyal crossroads bridges & turn arounds.	1.00	12	5.4	5.4	5.0	2.3		18.1
16	IH 35	(AREA 4) Direct Connectors From: IH 35 - NB To: FM 1472 WB- (FM 1472 RR Separation Overpass Northbound on ramp included)	0.50	24					0.8	0.8
	FM 1472	(AREA 4) Direct Connectors From: FM 1472 EB-To: IH 35 SB (FM 1472 RR Separation OverpasSouthbound on ramp included)	0.50	24					0.7	0.7
17	FM 1472	(AREA 5) Direct Connector From: FM 1472-SB To: IH 69 / U	0.50	12					0.8	0.8
18	FM 1472	From: DelMar To: 3.5 miles NW Pan American	1.00	24	3.5	3.5	0.7			7.7
19	FM 1472	From: RM 438 To: RM 422 (includes only 18 bridges (10 NB and 8 SB). 2 DPS scales site (1NB & 1SB w/ 40ft wide each) plus a striped island approx. 1 Mile South of RM 422)	1.00	24	3.5	3.5				7.0
20	SH 255	From: FM 1472 To : GSA Facility (Colombia Solidarity Bridge) including crossover	0.50	12	0.9	0.9				1.8
21	SH 255	From: FM 1472 To: Industrial Blvd. (Going East from FM 1472	0.50	12	0.5	0.5				1.0
22	US 59	From: Ejido St. To: RM 824	1.00	12	3.3	3.3				6.6
23	SH 359	From: RM 432 (US 83S.) To: RM 439 (End of 5 lane road) including white hedges and uncurbed shoulders	1.00	24	6.2	6.2				12.4
24	SS 400	From: SL 20 (Bod Bullrock St.) To: Arkansas Ave.	0.50	12	1.2	1.2				2.4
25	VARIOUS	Additional cycles needed on Tracts 1 through 24	0.50	4	10.0	10.0				20.0
TOTAL			10.00		42.90	42.90	12.20	6.30	2.30	106.60



The seal appearing on this document was authorized by
ROGELIO CHAPA JR.
 P.E. 148468
 9/26/2024

DocuSigned by:

Rogelio Chapa

307945B8A8784F3...

Notes:

The total amount of miles are estimated considering a sweeping per tract as follows:

- 4 Times A Year: Tract 25
- 12 Times A Year: Tracts 14, 15, 17, 20, 21, 22 & 24
- 24 Times A Year: Tracts 16, 18, 19, & 23
- 96 Times A Year: Tract 13 (Center Median)
- 48 Times A Year: Tract 13 (Outside Mainlane)
- 12 Times A Year: Tract 13 (Frontage Road & Entrance/Exit Ramp)

The Maintenance Supervisor will issue Work Order(s) to Contractor when sweeping is required, and will identify which tracts are to be swept.

Work shall not be performed to tracts under construction unless authorized by the Engineer.

Texas Department of Transportation

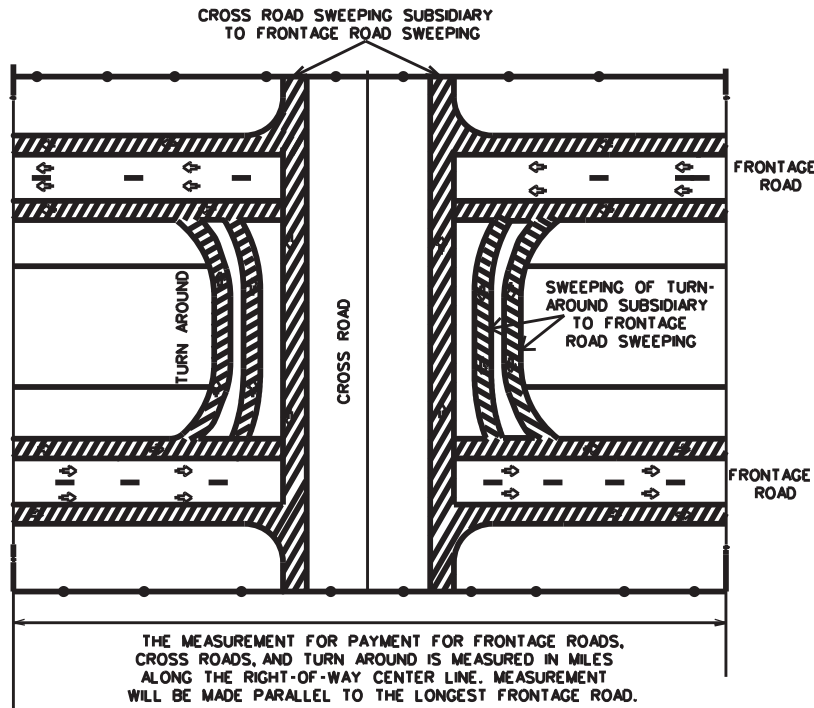
SUMMARY OF TIME ALLOWANCE PER TRACT (2-2)

© TxDOT 2024 SHEET **2** OF **2**

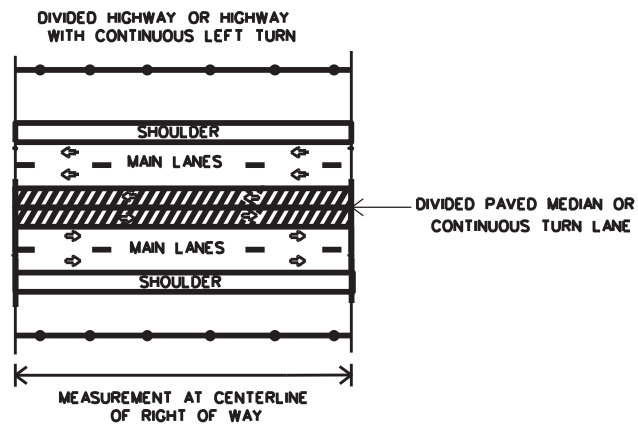
CONT	SECT	JOB	HIGHWAY
****	**	001	IH 35, ETC.
DIST		COUNTY	SHEET NO.
22		WEBB	13

DATE: 9/19/2024 2:38:35 PM
 FILE: T:\LRD\ST\TMT\FY 2025\MINT Contract (FY25)\RMC\Cleaning and Sweeping of Highways (Webb)\PlanSheet.dgn

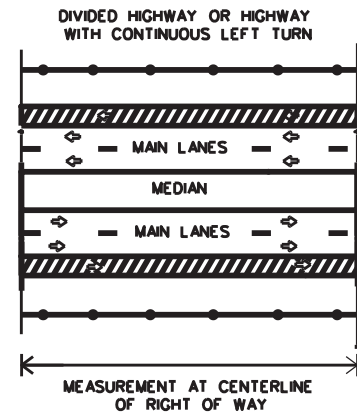
FRONTAGE ROAD SWEEPING



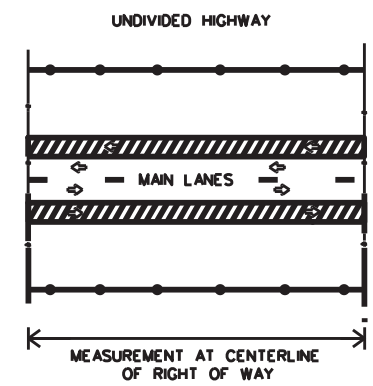
CENTER MEDIAN SWEEPING



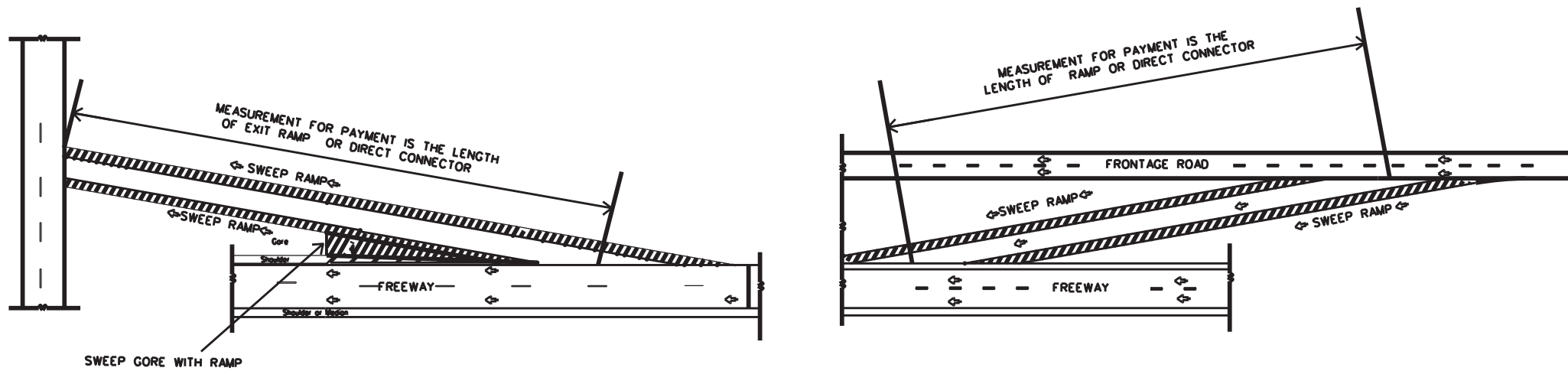
OUTSIDE MAIN LANE SWEEPING



OUTSIDE MAIN LANE SWEEPING

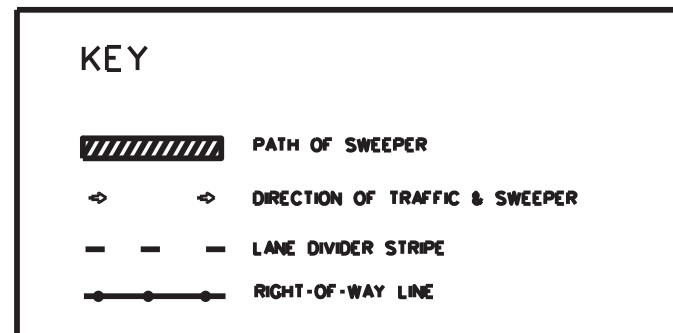


DISCLAIMER
 The use of this standard is governed by the "Texas Engineering Practice Act". No warranty of any kind is made by TxDOT for any purpose whatsoever. TxDOT assumes no responsibility for the conversion of this standard to other formats or for incorrect results or damages resulting from its use.



RAMPS OR DIRECT CONNECTORS

PAYMENT ITEM	NORMAL NUMBER OF PASSES OF THE SWEEPER	MEASUREMENT OF CENTER LINE MILES	OTHER AREAS SUBSIDIARY TO PAYMENT ITEM
SWEEPING (CENTER MEDIAN)	2	OF RIGHT OF WAY	NONE
SWEEPING (OUTSIDE MAIN LANE)	2	OF RIGHT OF WAY	NONE
SWEEPING (ONE FRONTAGE ROAD)	2	OF RIGHT OF WAY	CROSS ROADS & TURN AROUNDS
SWEEPING (TWO FRONTAGE ROADS)	4	OF RIGHT OF WAY	CROSS ROADS & TURN AROUNDS
SWEEPING (RAMP)	2	OF RAMP	GORE AREA
SWEEPING (DIRECT CONNECTOR)	2	OF CONNECTOR	GORE AREA



Texas Department of Transportation
 Maintenance Division
 Standard Plans

SWEEPING HIGHWAYS

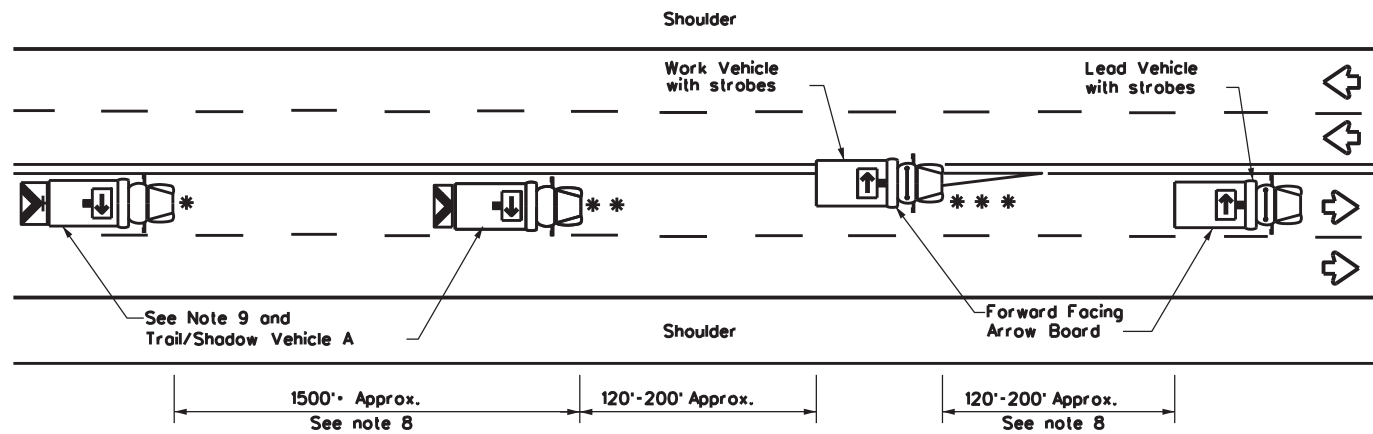
SWEEP - 04

SHEET 1 OF 1 NOT TO SCALE

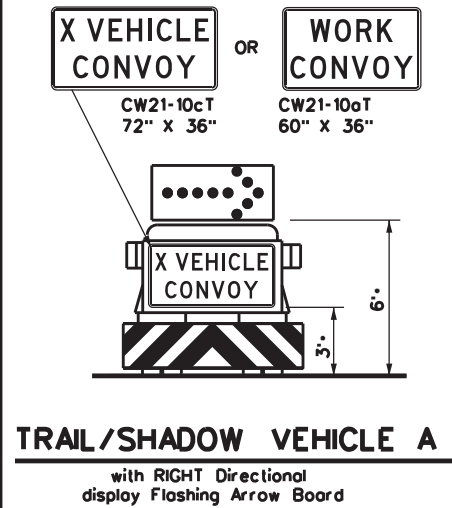
FILE: SWEEP04.DGN	DN: LJB	CK: JG	DW:-	CK:-	NEG NO.:
©TxDOT MAY 2004		STATE DISTRICT	FEDERAL REGION	FEDERAL AID PROJECT	SHEET
REVISED:	22	N/A	N/A		14
REVISED:	COUNTY			CONTROL SECTION	JOB HIGHWAY
REVISED:	WEBB			6472 21	001 IH 35, ETC.

LEVELS DISPLAYED
 1 2 3 4 5 6 7 8 9 10 11 12 13 14 15 16
 17 18 19 20 21 22 23 24 25 26 27 28 29 30 31 32
 33 34 35 36 37 38 39 40 41 42 43 44 45 46 47 48
 49 50 51 52 53 54 55 56 57 58 59 60 61 62 63

DISCLAIMER: The use of this standard is governed by the "Texas Engineering Practice Act". No warranty of any kind is made by TxDOT for any purpose whatsoever. TxDOT assumes no responsibility for the conversion of this standard to other formats or for incorrect results or damages resulting from its use.



TCP (3-1a)
UNDIVIDED MULTILANE ROADWAY



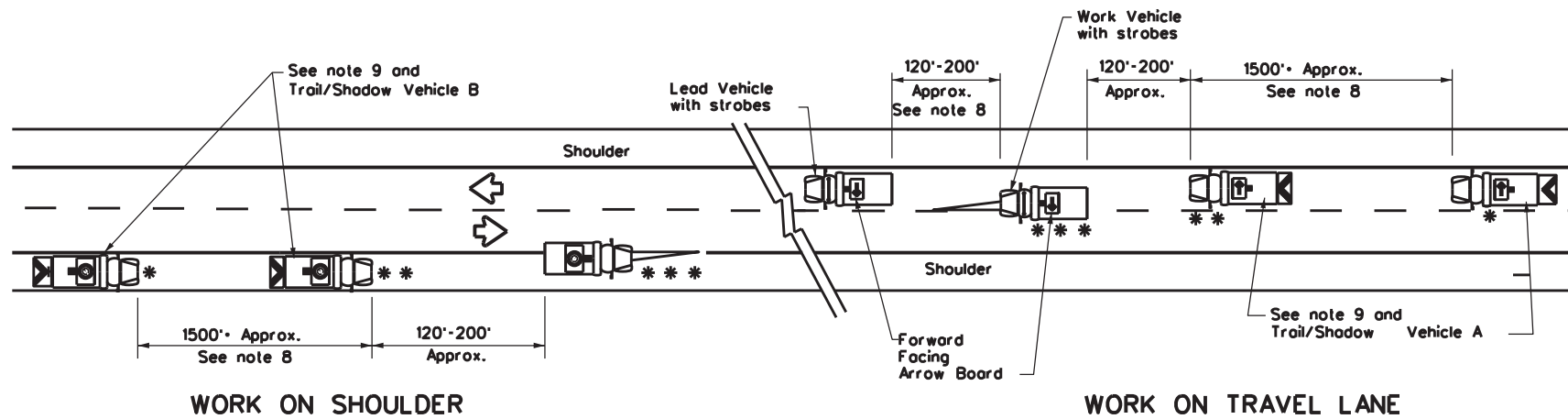
TRAIL/SHADOW VEHICLE A
with RIGHT Directional display Flashing Arrow Board

LEGEND		ARROW BOARD DISPLAY	
*	Trail Vehicle		
**	Shadow Vehicle		
***	Work Vehicle		RIGHT Directional
	Heavy Work Vehicle		LEFT Directional
	Truck Mounted Attenuator (TMA)		Double Arrow
	Traffic Flow		CAUTION (Alternating Diamond or 4 Corner Flash)

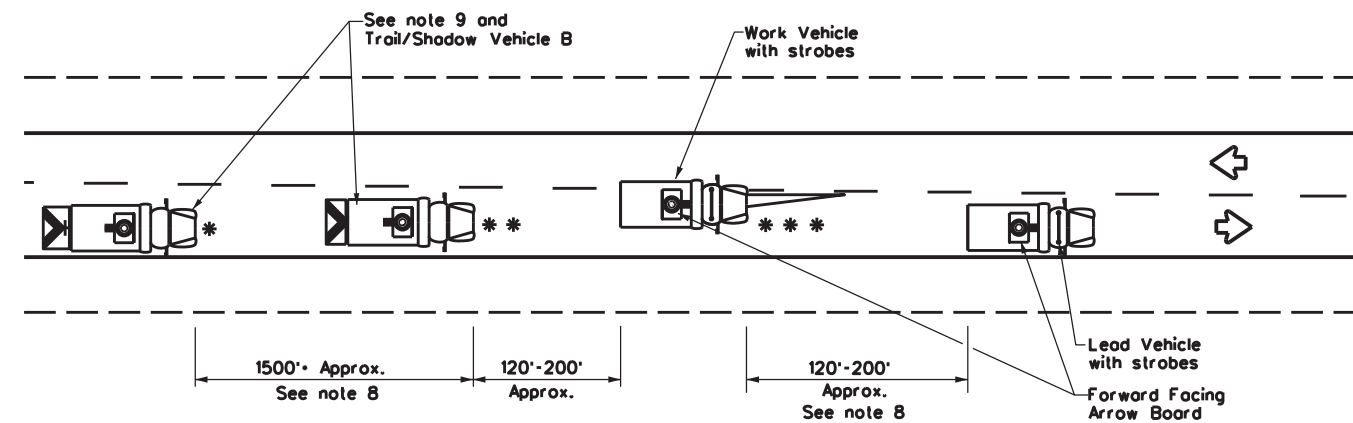
TYPICAL USAGE				
MOBILE	SHORT DURATION	SHORT TERM STATIONARY	INTERMEDIATE TERM STATIONARY	LONG TERM STATIONARY
✓				

GENERAL NOTES

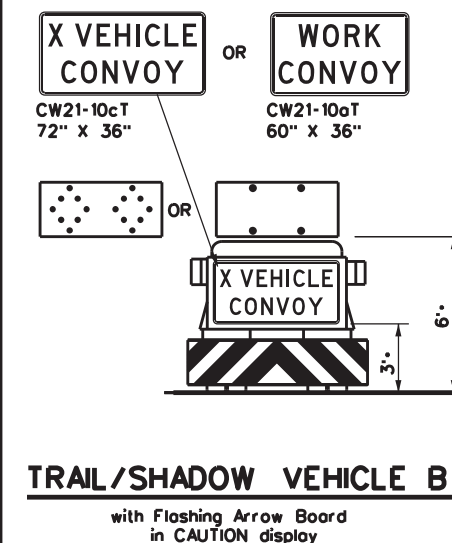
1. TRAIL, SHADOW, and LEAD vehicles shall be equipped with arrow boards as illustrated. When a LEAD vehicle is not used the WORK vehicle must be equipped with an arrow board. The Engineer will determine if the LEAD VEHICLE and/or TRAIL VEHICLE are required based on prevailing roadway conditions, traffic volume, and sight distance restrictions.
2. The use of amber high intensity rotating, flashing, oscillating, or strobe lights on vehicles are required. Blue high intensity rotating, flashing, oscillating or strobe lights when mounted on the driver's side of the vehicle may be operated simultaneously with the amber beacons or strobe lights.
3. The use of truck mounted attenuators (TMA) on the SHADOW VEHICLE and TRAIL VEHICLE are required.
4. Reflective sheeting on the rear of the TMA shall meet or exceed the reflectivity and color requirements of DEPARTMENTAL MATERIAL SPECIFICATION DMS 8300, Type A.
5. Flashing arrow boards shall be Type B or Type C as per the Barricade and Construction (BC) standards. The board shall be controlled from inside the vehicle.
6. Each vehicle shall have two-way radio communication capability.
7. When work convoys must change lanes, the TRAIL VEHICLE should change lanes first to shadow the other convoy vehicles.
8. Vehicle spacing between the TRAIL VEHICLE and the SHADOW VEHICLE will vary depending on sight distance restrictions. Motorists approaching the work convoy should be able to see the TRAIL VEHICLE in time to slow down and/or change lanes as they approach the TRAIL VEHICLE. Vehicle spacing between the WORK VEHICLE and SHADOW VEHICLE and vehicle spacing between WORK VEHICLE and LEAD VEHICLE may vary according to terrain, work activity and other factors.
9. "X VEHICLE CONVOY" (CW21-10cT) or "WORK CONVOY" (CW21-10aT) signs shall be used on TRAIL VEHICLES and SHADOW VEHICLES as shown. As an option 48" X 48" diamond shaped "WORK CONVOY" (CW21-10T) or "X VEHICLE CONVOY" (CW21-10bT) signs may be used where adequate mounting space exists. When used, the X VEHICLE CONVOY sign shall have the number of the convoy vehicles displayed on the sign in the number designation "X" location. The "X VEHICLE CONVOY" sign shall not be used on the SHADOW VEHICLE if a TRAIL VEHICLE is used.
10. On two-lane two-way roadways, the work and protection vehicles should pull over periodically to allow motor vehicle traffic to pass. If motorists are not allowed to pass the work convoy, a "DO NOT PASS" (R4-1) sign should be placed on the back of the rearmost protection vehicle.



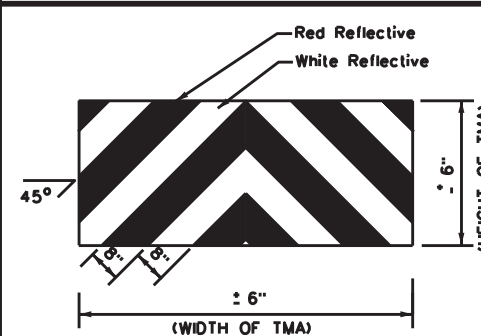
TCP (3-1b)
TWO-WAY ROADWAY WITH PAVED SHOULDERS



TCP (3-1c)
TWO-WAY ROADWAY WITHOUT PAVED SHOULDERS



TRAIL/SHADOW VEHICLE B
with Flashing Arrow Board in CAUTION display



STRIPING FOR TMA

Traffic Operations Division Standard

**TRAFFIC CONTROL PLAN
MOBILE OPERATIONS
UNDIVIDED HIGHWAYS**

TCP(3-1)-13

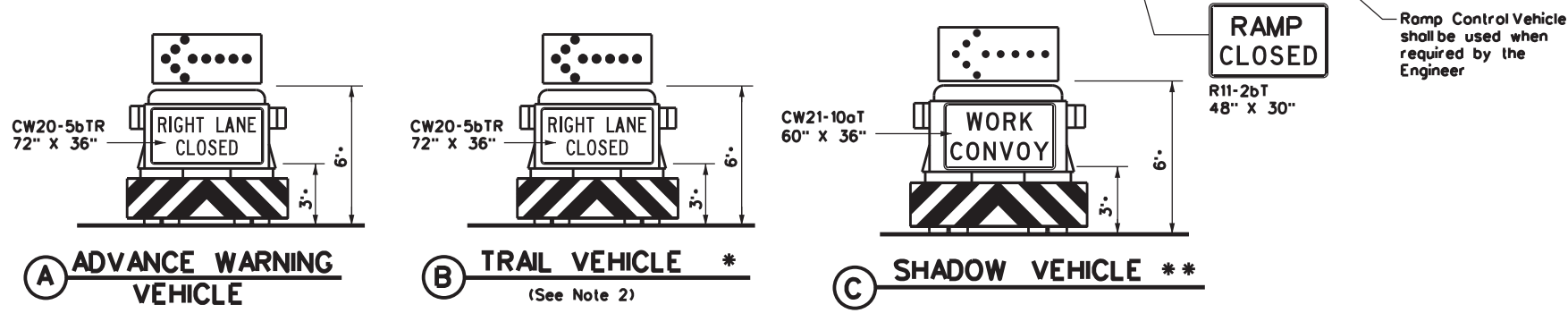
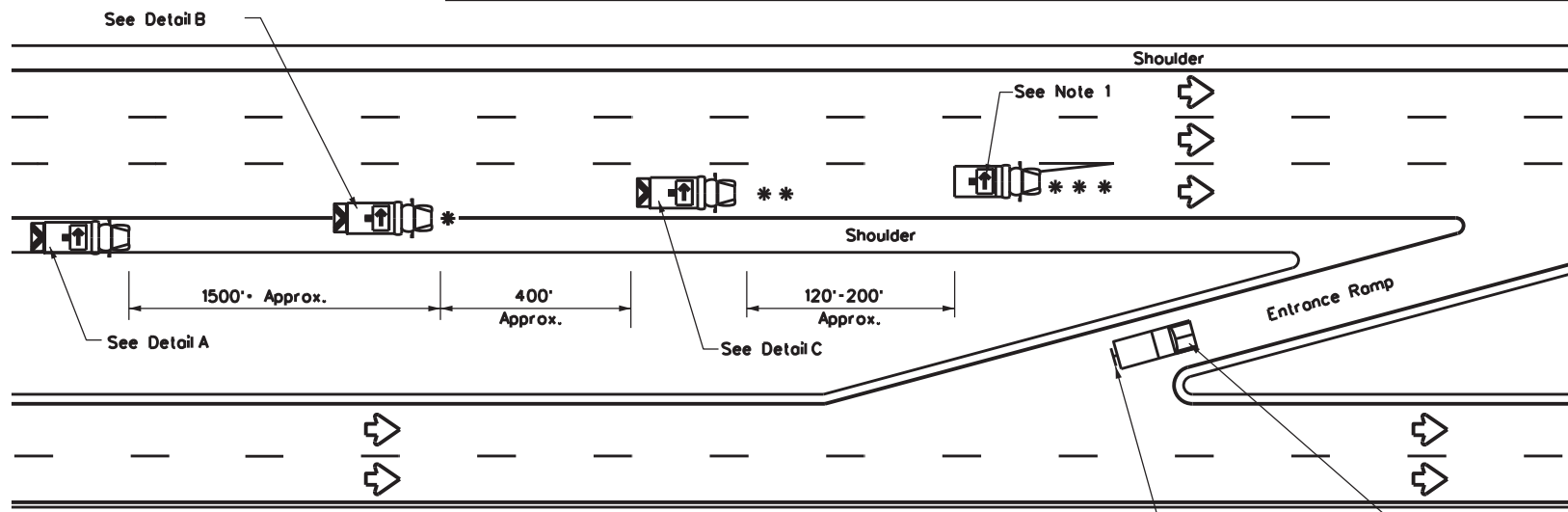
FILE: tcp3-1.dgn	DN: TxDOT	CK: TxDOT	DW: TxDOT	CK: TxDOT
© TxDOT December 1985	CONT: 6472	SECT: 21	JOB: 001	HIGHWAY: IHI 35, ETC.
REVISIONS	DIST: 22	COUNTY: WEBB	SHEET NO.: 15	

2-94 4-98
8-95 7-13
1-97

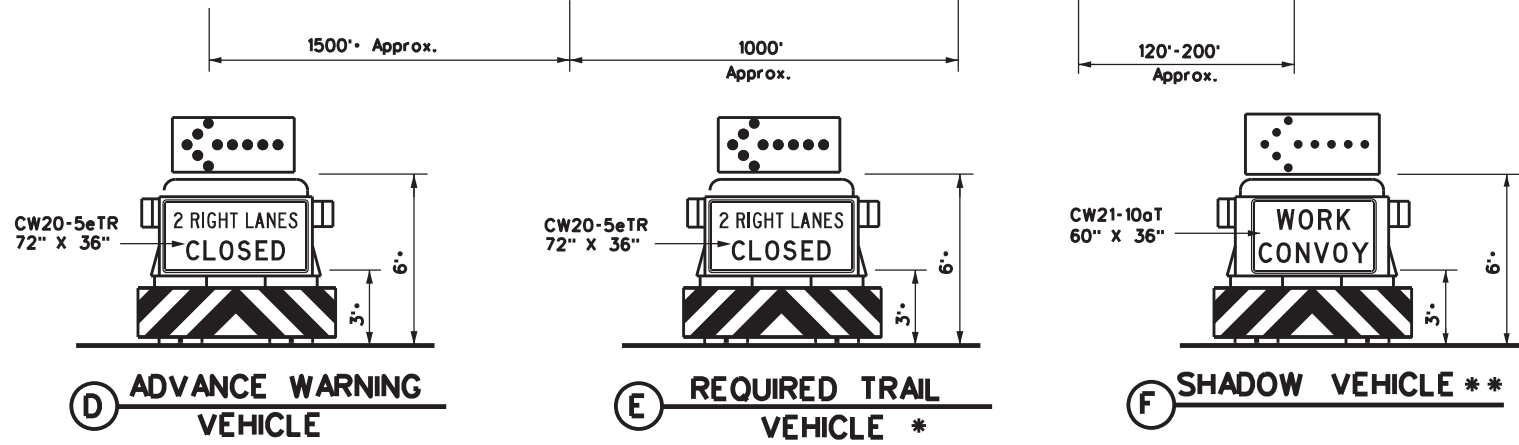
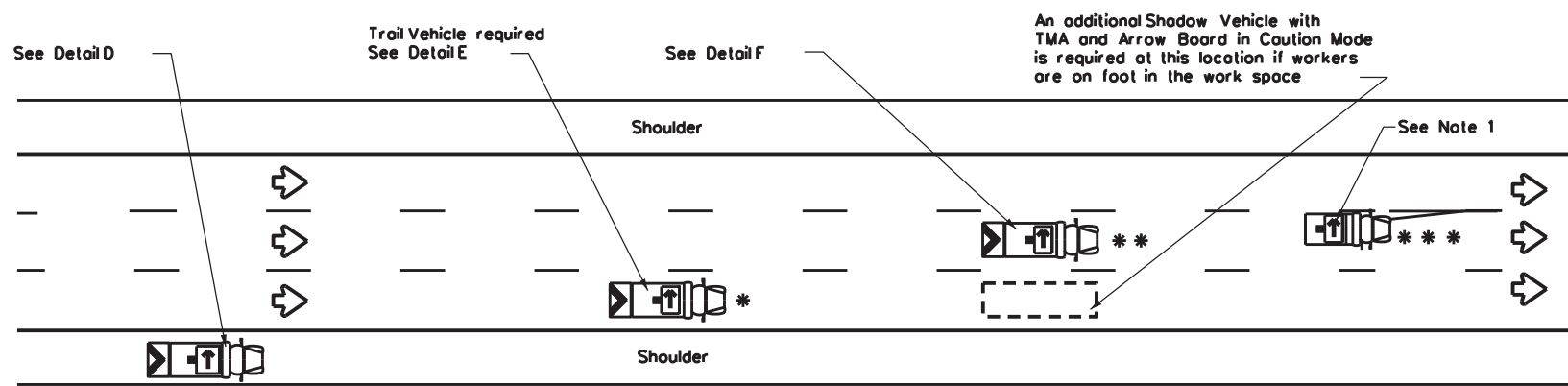
DATE:
FILE:

DISCLAIMER: The use of this standard is governed by the "Texas Engineering Practice Act". No warranty of any kind is made by TxDOT for any purpose whatsoever. TxDOT assumes no responsibility for the conversion of this standard to other formats or for incorrect results or damages resulting from its use.

DATE: FILE:



RIGHT LANE CLOSURE ON DIVIDED HIGHWAY - TCP(3-2a)



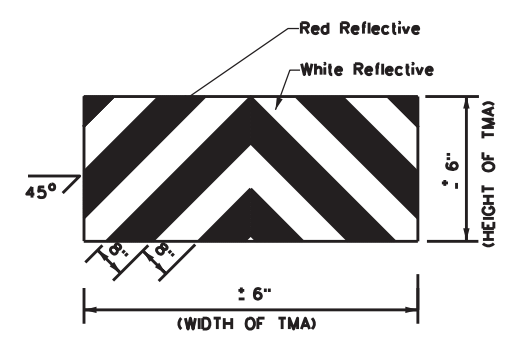
INTERIOR LANE CLOSURE ON MULTI-LANE DIVIDED HIGHWAY - TCP(3-2b)

LEGEND			
*	Trail Vehicle	ARROW BOARD DISPLAY	
**	Shadow Vehicle		
***	Work Vehicle	→	RIGHT Directional
☐	Heavy Work Vehicle	←	LEFT Directional
⬢	Truck Mounted Attenuator (TMA)	↔	Double Arrow
⬠	Traffic Flow	⚠	CAUTION (Alternating Diamond or 4 Corner Flash)

TYPICAL USAGE				
MOBILE	SHORT DURATION	SHORT TERM STATIONARY	INTERMEDIATE TERM STATIONARY	LONG TERM STATIONARY
✓				

GENERAL NOTES

- ADVANCE WARNING, TRAIL and SHADOW vehicles shall be equipped with Type B or Type C flashing arrow boards as per the Barricade and Construction (BC) standards. Arrow boards on WORK vehicles will be optional based on the type of work being performed. The arrow boards shall be operated from inside the vehicle.
- For TCP(3-2a) the Engineer will determine if the TRAIL VEHICLE is required based on prevailing roadway conditions, traffic volume, and sight distance restrictions. All other vehicles shown for both TCP(3-2a) and TCP(3-2b) are required.
- The use of amber high intensity rotating, flashing, oscillating, or strobe lights on vehicles are required. Blue high intensity rotating, flashing, oscillating or strobe lights when mounted on the driver's side of the vehicle may be operated simultaneously with the amber beacons or strobe lights.
- The use of truck mounted attenuators (TMA) on the ADVANCE WARNING, SHADOW, and TRAIL vehicles are required.
- Reflective sheeting on the rear of the TMA shall meet or exceed the reflectivity and color requirements of DMS 8300, Type A.
- Each vehicle shall have two-way radio communication capability.
- When work convoys must change lanes, the TRAIL VEHICLE should change lanes first to shadow the other convoy vehicles.
- Vehicle spacing between the TRAIL VEHICLE and the SHADOW VEHICLE will vary depending on sight distance restrictions. Motorists approaching the work convoy should be able to see the TRAIL VEHICLE in time to slow down and/or change lanes as they approach the TRAIL VEHICLE. Vehicle spacing between the WORK VEHICLE and SHADOW VEHICLE may vary according to terrain, work activity and other factors.
- Standard 48" X 48" diamond shaped warning signs with the same message as those shown may be used where adequate mounting space exists.
- The signs shown should be used on the Advance Warning Vehicle. As an option, a portable changeable message sign (PCMS) or a truck mounted changeable message sign (TMCMS) with a minimum character height of 12", and displaying the same legend may be substituted for these signs. An appropriate directional arrow display, simulating the size and legibility of the flashing arrow board, must be used in the second phase of the PCMS/TMCMS message. When this is done, the arrow board will not be required on the Advance Warning Vehicle.
- Standard diamond shape versions of the CW20-5 series signs may be used as an option if the rectangular signs shown are not available.
- The principles on this sheet may be used to close lanes from the left side of the roadway considering the number of lanes, shoulder width, sight distance, and ramp frequency.
- Signs and flashing arrow board modes shall be appropriately altered when implementing left lane closures or interior closures which close the left lanes.
- The Advance Warning Vehicle may straddle the edgeline when shoulder width makes it necessary.



STRIPING FOR TMA

		Traffic Operations Division Standard	
TRAFFIC CONTROL PLAN MOBILE OPERATIONS DIVIDED HIGHWAYS			
TCP(3-2)-13			
FILE: tcp3-2.dgn	DN: TxDOT	CK: TxDOT	DW: TxDOT
© TxDOT December 1985	CONT: 6472	SECT: 21	JOB: 001
REVISIONS:			HW: 35, ETC.
2-94 4-98			COUNTY: WEBB
8-95 7-13			SHEET NO.: 16
1-97			