

CONT	SECT	JOB	HIGHWAY
6474	31	001	US 281, Etc
DIST	COUNTY		SHEET NO.
14	BURNET, Etc.		1

STATE OF TEXAS

DEPARTMENT OF TRANSPORTATION

PLANS OF PROPOSED STATE HIGHWAY ROUTINE MAINTENANCE

PROJECT NUMBER
RMC 647431001

BURNET, Etc.
US 281, Etc.

FROM: VARIOUS LOCATIONS IN BURNET COUNTY
TO: AND LLANO COUNTY

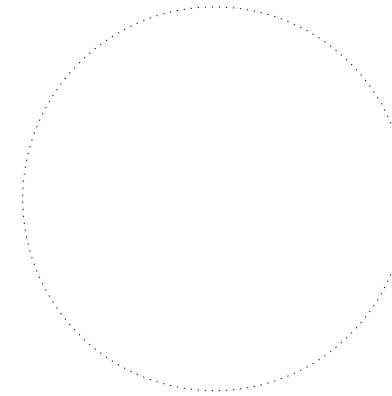
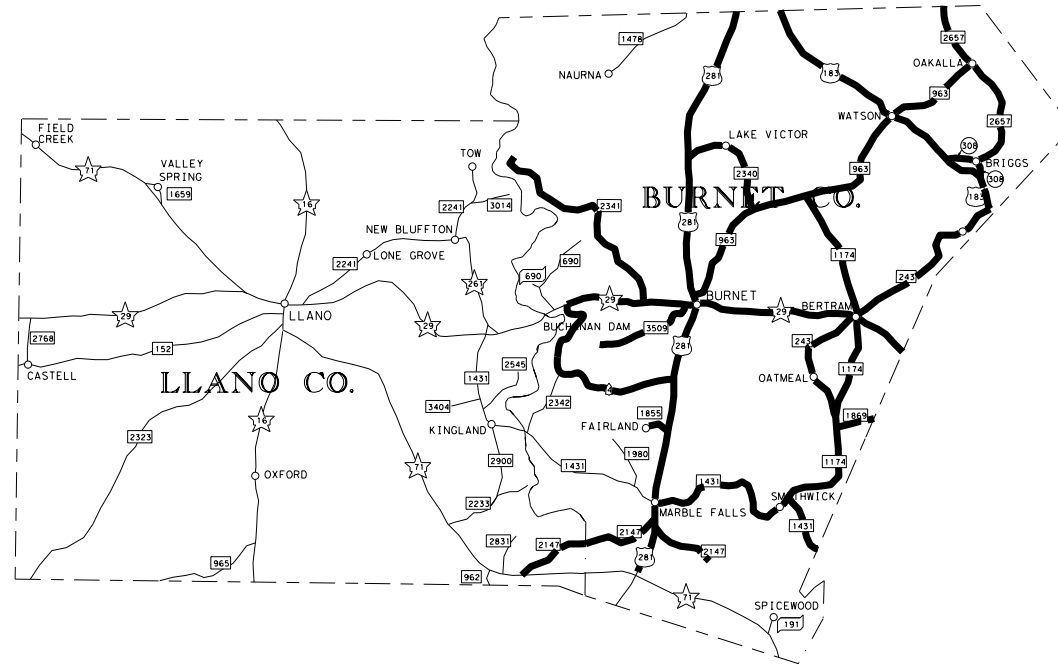
FOR THE MAINTENANCE OF MOWING HIGHWAY RIGHT OF WAY
CONSISTING OF MOWING HIGHWAY RIGHT OF WAY

FINAL PLANS

DATE OF LETTING: _____
DATE WORK BEGAN: _____
DATE WORK COMPLETED AND ACCEPTED: _____
FINAL CONTRACT COST: \$ _____
CONTRACTOR: _____
LIST OF APPROVED CHANGE ORDERS:

I CERTIFY THAT THIS PROJECT
WAS CONSTRUCTED IN SUBSTANTIAL
COMPLIANCE WITH THE FINAL AS-BUILT
PLANS AND SPECIFICATIONS.

AREA ENGINEER P. E. DATE



LOCATION MAP NOT TO SCALE

EXCEPTIONS: NONE
EQUATIONS: NONE
RAILROAD CROSSINGS: NONE

SPECIFICATIONS ADOPTED BY THE TEXAS DEPARTMENT OF TRANSPORTATION ON SEPTEMBER 1, 2024 AND SPECIFICATION ITEMS LISTED AND DATED AS FOLLOWS, SHALL GOVERN ON THIS PROJECT.



© TEXAS DEPARTMENT OF TRANSPORTATION; ALL RIGHTS RESERVED

SUBMITTED FOR LETTING: 9/4/2024

DocuSigned by:
Tyler Budney
0961789F0C4A489
FOR AREA ENGINEER

RECOMMENDED FOR LETTING: 9/4/2024

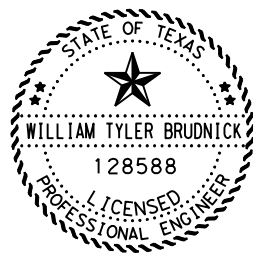
DocuSigned by:
Gisel Carrasco, P.E.
097829A06497450...
DISTRICT MAINTENANCE ENGINEER

APPROVED FOR LETTING: 9/4/2024

DocuSigned by:
Omar X. De Leon, P.E.
D18DBE2B04AE4EA
DIRECTOR OF MAINTENANCE

INDEX OF SHEETS

<u>SHEET NO.</u>	<u>DESCRIPTION</u>
1	TITLE SHEET
2	INDEX OF SHEETS
3-3A	GENERAL NOTES
4	ESTIMATE AND QUANTITY SHEET
5	SUMMARY SHEET
**STANDARDS	
<< 6	R5-TCP-05



THE STANDARD SHEETS SPECIFICALLY IDENTIFIED ABOVE BY A << HAVE BEEN SELECTED BY ME OR UNDER MY SUPERVISION AND ARE APPLICABLE TO THIS PROJECT.

DocuSigned by:

Tyler Brudnick
 WILLIAM TYLER BRUDNICK, P.E. P.E. 9/4/2024
 DATE

DATE: 9/4/2024 1:47:40 PM
 FILE: T:\Design\6405-94-001, FY 2024 Mowing RMC Burnet CO\Plan Set\Index Of Sheets.dgn

Austin District Burnet Area Office				
Texas Department of Transportation				
INDEX OF SHEETS				
© 2025	CONT	SECT	JOB	HIGHWAY
DS: CK:	6474	31	001	US 281, Etc
DW: CK:	DIST	COUNTY	SHEET NO.	
	14	BURNET, Etc.	2	

Project Number: RMC-647431001
County: BURNET. ETC.
Highway: US 281, ETC.

Sheet: 3
Control: 6474-31-001

GENERAL NOTES:

GENERAL

Contractor questions on this project are to be addressed to the following individual(s):

Burnet Area Joe.Muck@txdot.gov
Burnet Area Tyler.Brudnick@txdot.gov

Questions and requests for documents will be accepted via the Letting Pre-Bid Q&A web page. All contractor questions will be reviewed by the Engineer. All questions and any corresponding responses that are generated will be posted through the same Letting Pre-Bid Q&A web page. This webpage can be accessed from the Notice to Contractors dashboard located at the following Address:

<https://tableau.txdot.gov/views/ProjectInformationDashboard/NoticetoContractors>

The Letting Pre-Bid Q&A web page for each project can be accessed by using the dashboard to navigate to the project you are interested in by scrolling or filtering the dashboard using the controls on the left. Hover over the blue hyperlink for the project you want to view the Q&A for and click on the link in the window that pops up.

References to manufacturer's trade name or catalog numbers are for the purpose of identification only. Similar materials from other manufacturers are permitted if they are of equal quality, comply with the specifications for this project, and are approved.

Begin work within seven (7) calendar days after authorization is provided. Time charges will begin when work begins regardless if it falls within seven (7) calendar days of the notification to begin work.

Commence work upon issuance of a work order. Continue for (2) two calendar years or until contract funds are expended, whichever occurs first. If agreed upon in writing by both parties to the contract, the contract may be extended for an additional period of time not to exceed the original contract time period. The extended contract may be for additional quantities up to the original bid quantities plus any quantities added by an approved change order. The extensions will meet the terms and conditions of the original contract plus any approved terms and conditions made by previously approved change orders.

Work may be prosecuted at concurrent locations with approval of the engineer. Notify the engineer 96 hours in advance of beginning work at any location. Do not start new operations to the detriment of work already begun.

If work is performed at Contractor's option, when inclement weather is impending, and the work is damaged by subsequent precipitation, the Contractor is responsible for all costs associated with replacing the work, if required.

Equip all construction equipment used in roadway work with highly visible omnidirectional flashing warning lights. A slow-moving vehicle emblem will be affixed to the rear of mowers.

Remove all equipment from the right of way at the completion of each mowing cycle. Equipment will not be left within 30 feet of the travel lane.

Project Number: RMC-647431001
County: BURNET. ETC.
Highway: US 281, ETC.

Sheet: 3
Control: 6474-31-001

Each contract is considered separate and individual from others. Requirements to complete work on any or all contracts may occur at the same time. If requests are issued at the same time, it is expected that the work will be completed in the time frame allowed.

ITEM 6 - CONTROL OF MATERIALS

The Contractor is required to have sufficient supply of material to complete repair work within the allotted time.

ITEM 7 – LEGAL RELATIONS AND RESPONSIBILITIES

When any abandoned well is encountered, cease construction operations in this area and notify the Engineer who will coordinate the proper plugging procedures. A water well driller licensed in the State of Texas must be used to plug a well.

Perform maintenance of vehicles or equipment at designated maintenance sites. Keep a spill kit on-site during fueling and maintenance. This work is subsidiary.

Locate aboveground storage tanks kept on-site for construction purposes in a contained area as to not allow any exposure to soils. The containment will be sized to capture 150% of the total capacity of the storage tanks.

Migratory Birds and Bats.

Migratory birds and bats may be nesting within the project limits and concentrated on roadway structures such as bridges and culverts. Remove all old and unoccupied migratory bird nests from any structures, trees, etc. between September 16 and February 28. Prevent migratory birds from re-nesting between March 1 and September 15. Prevention shall include all areas within 25 ft. of proposed work. All methods used for the removal of old nesting areas and the prevention of re-nesting must be submitted to TxDOT 30 business days prior to begin work. This work is subsidiary.

If active nests are encountered on-site during construction, all construction activity within 25 ft. of the nest must stop. Contact the Engineer to determine how to proceed.

ITEM 730 – ROADSIDE MOWING

For this contract, there are **2** cycles of full width mowing, annually.

For this contract, the Contractor should have in operation at all times, no less than **four** mowers for full width mowing, unless otherwise approved by the Engineer. This amount of equipment is for information purposes and the State will look at production rates to establish whether performance is progressing according to specifications.

The Contractor will be given written notification of when to begin a mowing cycle. Within the written notification, the Contractor will be given the number of acres required for the mowing cycle, and the date when the time charges for the mowing cycle will be started. The number of working days allowed to complete the mowing cycle will be determined by the Engineer.

Project Number: RMC-647431001
County: BURNET. ETC.
Highway: US 281, ETC.

Sheet: 3A
Control: 6474-31-001

For this contract the basis of estimate for mowing acres per normal working day will be **140** acres for full width mowing.

The total number of working days for all 4 cycles is 92 working days.

Mowers will be adjusted for a cutting height of approximately five to seven inches as directed by the Engineer. Stops will be placed in the cylinders on the main deck so the mower will not cut lower than this set adjustment. The Engineer reserves the right to require the mower to be readjusted at any time the Engineer suspects the adjustment is incorrect. All rotary mowers will be maintained with sharp blades to cleanly, evenly cut vegetation at all times.

All rotary mowers must be equipped with either safety chains or the manufacturer's safety device to prevent damage to property caused by flying debris propelled out from under the mower. Chains will be a minimum of 5/16 inch in size and links spaced side by side around the mowers front, sides and rear.

Tractor mounted mowers may be used in large open areas. Suitable smaller riding or push-type mowers will be used in areas around shrubs and trees in landscaped areas as directed by the Engineer.

All hand trimming must be kept up with the mowing operation. For this operation, a minimum of one support vehicle will be required along with a minimum of two people to do the trimming per tract. These persons will perform the trimming directly behind the mowers. The trimming should not be done by the mower operators unless otherwise directed by the Engineer. Should the hand trimming fall behind, the Engineer may stop all mowing operations until the trimming is caught up. The work days will continue during this mowing stoppage.

Mow as close as possible to all fixed objects exercising extreme care not to damage trees, plants, shrubs, signs, delineators or other appurtenances which are part of the facility. Hand trimming around such objects is required of the Contractor, unless specified otherwise, and will be subsidiary to the mowing operations and has been included in the total working days allowed. Straighten and plumb all object markers and delineators post after each mowing cycle. Working days will continue to accrue until this work is complete. Any damage caused by the Contractor's operation will be repaired and/or replaced to a condition as good as or better than at the Contractor's expense. The Department has the authority to charge the Contractor for any damage not repaired.

Grass trimmings that accumulate in the gutters and roadway shall be removed by the contractor. This work is subsidiary to the pertinent items.

The Contractor will remove all small woody plants around fixed objects.

The Contractor will be required to edge the curb lines during each cycle of mowing.

The Engineer reserves the right to specify the sequence of mowing operation by highway, etc. Failure to comply with these instructions will be considered as not complying with the terms of the contract. The sequence of work will be as established by the Engineer or as requested by the Contractor with prior approval by the Engineer.

Project Number: RMC-647431001
County: BURNET. ETC.
Highway: US 281, ETC.

Sheet: 3A
Control: 6474-31-001

Then Engineer reserves the right to pay for partial cycles when it is determined that certain highways or portions thereof may not need mowing.

The number of cycles included in the plans is for estimation purposes only. The Contractor will be given written notice on an as-needed (callout work) for each cycle of mowing.

To prevent further spread of parasitic or invasive plants in the Austin District, all mowing equipment must be pressure washed prior to beginning mowing operations in any Austin District Maintenance Section.

Mowing Requirements: Strip mowing will also include all mowing necessary to maintain adequate sight distance at intersections, private entrances, off ramps, on ramps, signs, delineators and curves. Strip mowing may also be used to mow inside small towns between normal mowing cycles.

Furnishing and installation of work zone signs is subsidiary to Item 730.



Estimate & Quantity Sheet

CONTROLLING PROJECT ID 6474-31-001

DISTRICT Austin
HIGHWAY US0281

COUNTY Burnet

CONTROL SECTION JOB				6474-31-001		TOTAL EST.	TOTAL FINAL
PROJECT ID				A00212368			
COUNTY				Burnet			
HIGHWAY				US0281			
ALT	BID CODE	DESCRIPTION	UNIT	EST.	FINAL		
	500-7002	MOBILIZATION (CALLOUT)	EA	4.000		4.000	
	730-7021	SPOT MOWING	AC	120.000		120.000	
	730-7022	FULL - WIDTH MOWING	AC	7,492.000		7,492.000	

ESTIMATE/QUANTITY SHEET
FULL WIDTH MOWING

RMC: 647431001

THE HIGHWAYS LISTED BELOW AND APPROXIMATE ACRES COMPRISE THE ENTIRE TRACT TO BE MOWED IN ONE FULL WIDTH CYCLE OF MOWING.

HIGHWAY	LIMITS	LENGTH MILES	ESTIMATED CYCLE	APPROX ACRES PER HIGHWAY	WORKING DAYS PER CYCLE
US 183	FROM BURNET-LAMPASAS C/L TO BURNET-WILLIAMSON C/L	20.60	4	198	2
SH 29	FROM BURNET-WILLIAMSON C/L TO PARK ROAD 4	18.62	4	91	1
LOOP 308	FROM US 183 NORTH OF BRIGGS TO US 183 SOUTH OF BRIGGS	0.82	4	4	1
RM 243	FROM RM 1174 TO US 183	20.48	4	142	2
RM 963	FROM US 281 TO RM 2657 AT OKALLA	27.66	4	196	2
RM 1174	FROM RM 963 TO RM 1431	23.10	4	176	2
RM 1869	FROM 1174 TO BURNET-WILLIAMSON C/L	2.63	4	19	1
RM 2340	FROM US 281 TO RM 963	7.75	4	56	1
RM 2657	FROM LAMPASAS C/L TO LOOP 308 AT BRIGGS	12.34	4	98	1
US 281	FROM LAMPASAS-BURNET C/L TO 1800' NORTH OF SH 71	37.30	4	371	3
PARK RD 4	FROM SH 29 TO US 281	15.68	4	97	1
RM 1431	FROM FM 1980 TO TRAVIS-BURNET C/L	18.77	4	160	2
RM 1855	FROM 1.6 MILES WEST OF US 281 TO US 281	1.60	4	11	2
RM 2147	FROM SH 71 TO 4.8 MILES EAST OF US 281	13.28	4	93	1
RM 2341	FROM 15.02 MILES NORTH OF SH 29 TO SH 29	15.02	4	100	1
FM 3509	WEST OF SH 29 FOR 5.73 MILES TO END OF STATE MAINTENANCE	5.73	4	61	1
TOTAL:		241.38 MI		1873 AC	23 DAYS

* THE TOTALS ABOVE ARE FOR 1 CYCLE.

* THE HIGHWAYS AND LIMITS LISTED BELOW HAVE CURRENT OR FUTURE PROJECTS TO BE OMITTED FROM MOWING CONTRACT DURING CONSTRUCTION. OTHER LIMITS MAY BE OMITTED AS PROJECTS ARE LET FOR CONSTRUCTION, AND SPECIFIED LIMITS MAY BE MOWED AS CONSTRUCTION PROJECTS ARE COMPLETED.

HIGHWAY	LIMITS	LENGTH MILES
SH 29	FROM 0.382 MI W. OF ALGERITA HILL RD. TO LEHNE RD.	5.018
TOTAL:		5.018

IT IS UNDERSTOOD THAT THE AREA SHOWN IS APPROXIMATE ONLY AND IS INTENDED TO SERVE AS A GUIDE IN TABULATING BIDS.
THE CENTER MEDIAN IS TO BE MOWED FULL WIDTH.

Austin District
Burnet Area Office



SUMMARY SHEET

© 2025	CONT	SECT	JOB	HIGHWAY
DS: CK:	6474	31	001	US 281, Etc
DW: CK:	DIST		COUNTY	SHEET NO.
	14	BURNET, Etc.		5

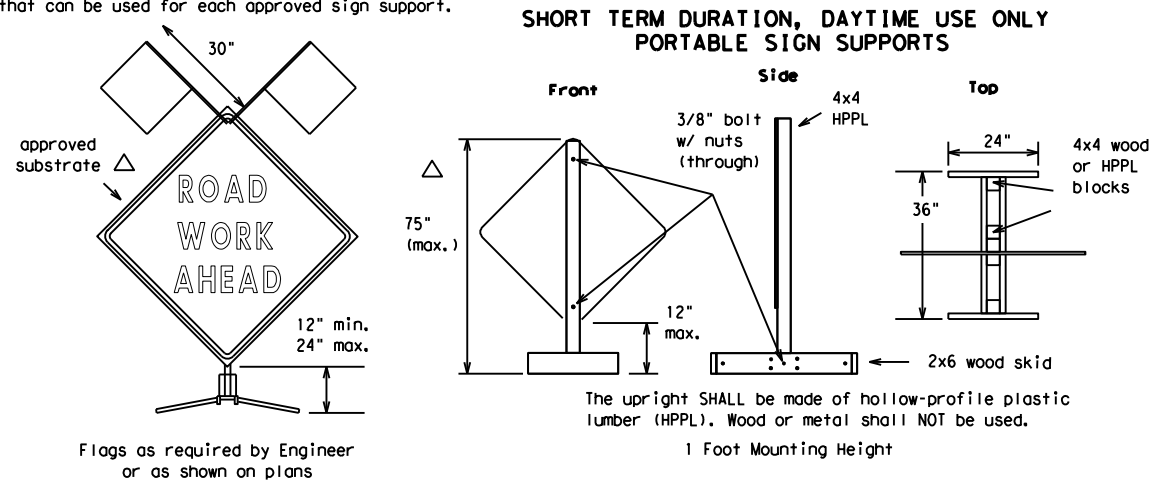
DATE: 9/4/2024 1:48:23 PM
FILE: I:\Design\6405-94-001, FY 2024 Mowing RMC Burnet CO\Plan Set\Summary Sheet.dgn

DISCLAIMER
The use of this standard is governed by the "Texas Engineering Practice Act". No warranty of any kind is made by TxDOT for any purpose whatsoever. TxDOT assumes no responsibility for the conversion of this standard to other formats or for incorrect results or damages resulting from its use.

1	2	3	4	5	6	7	8	9	10	11	12	13	14	15	16
17	18	19	20	21	22	23	24	25	26	27	28	29	30	31	32
33	34	35	36	37	38	39	40	41	42	43	44	45	46	47	48
49	50	51	52	53	54	55	56	57	58	59	60	61	62	63	

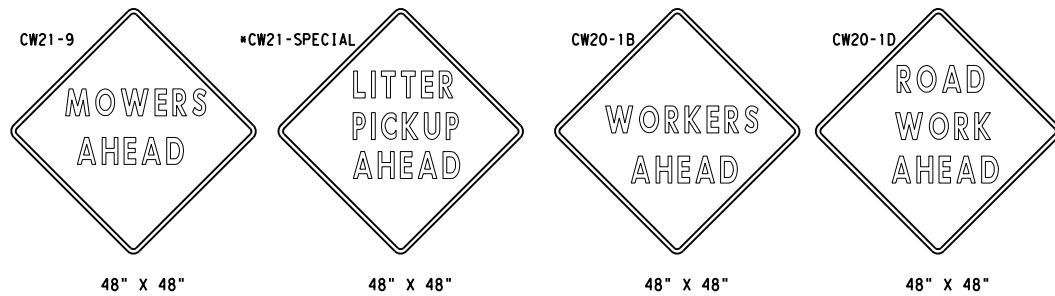
EXAMPLES OF SIGN SUPPORTS

See the CWZTCD for the type of sign substrate that can be used for each approved sign support.



Attachment to wooden supports will be by bolts and nuts or screws. Use TxDOT's or manufacturer's recommended procedures for attaching sign substrates to other types of sign supports.

Nails will NOT be allowed.



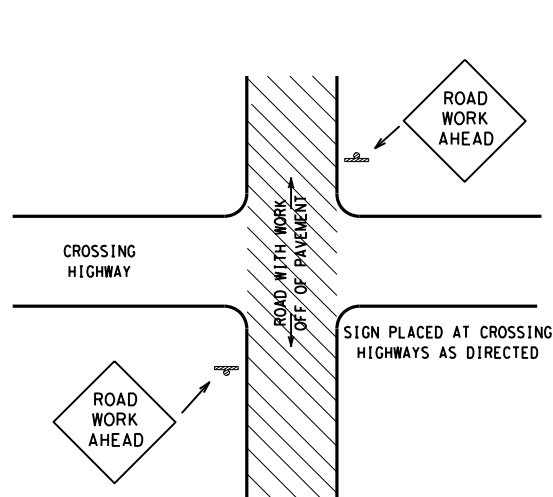
SIGN IN ACCORDANCE WITH THE TEXAS MANUAL ON UNIFORM TRAFFIC CONTROL DEVICES FOR STREETS AND HIGHWAYS

MOWERS AHEAD SIGNS ARE USED FOR MOWING OPERATIONS.

LITTER PICKUP AHEAD, ROAD WORK AHEAD AND WORKER AHEAD SIGNS ARE USED AS DIRECTED FOR OTHER MAINTENANCE OPERATIONS WHEN ALL WORK OCCURS OFF OF THE PAVED HIGHWAY SURFACE.

ROLL-UP SIGNS CONFORMING TO DMS-8310 AND THE CWZTCD ALLOWED

*Letter dimensions and spacing for "CW21-SPECIAL" is the same as C20-1D



TYPICAL LOCATION OF SIGNS AT HIGHWAY CROSSING

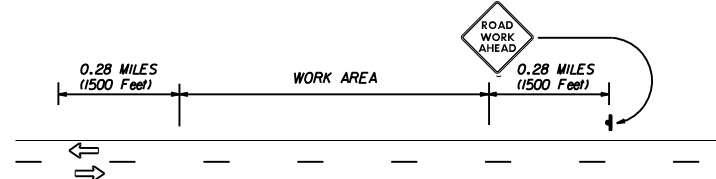
WORK AREA IS A MAXIMUM OF 2.0 MILES UNLESS OTHERWISE DIRECTED. SIGNS MAY REMAIN IN PLACE ONLY DURING DAYLIGHT HOURS.

SIGNS ARE TO BE PLACED 6' TO 12' OFF OF THE PAVED SURFACE UNLESS OTHERWISE DIRECTED.

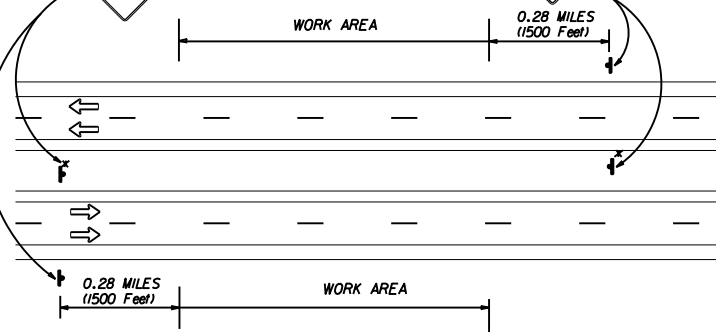
ROAD WORK AHEAD SIGNS SHOWN AS EXAMPLES, ONE OF THE FOUR TYPE SIGNS WILL BE USED AS DIRECTED.

* SIGNS IN THE MEDIAN ARE REQUIRED WHEN WORK OCCURS IN MEDIAN

UNDIVIDED HIGHWAY OR FRONTAGE ROAD



DIVIDED HIGHWAY



TRAFFIC CONTROL PLAN FOR WORK OFF OF THE PAVED SURFACE.

GENERAL NOTES FOR WORK ZONE SIGNS

- Contractor shall install and maintain signs in a straight and plumb condition and/or as directed by the Engineer.
- Wooden sign posts shall be painted white.
- Barricades shall NOT be used as sign supports.
- Nails shall NOT be used to attach signs to any support.
- All signs shall be installed in accordance with the plans or as directed by the Engineer. Signs shall be used to regulate, warn, and guide the traveling public safely through the work zone.
- The Contractor may furnish either the sign design shown in the plans or in the "Standard Highway Sign Designs for Texas" (SHSD). The Engineer/Inspector may require the Contractor to furnish other work zone signs that are shown in the TMUTCD but may have been omitted from the plans. Any variation in the plans shall be documented by written agreement between the Engineer and the Contractor's Responsible Person. All changes must be documented in writing before being implemented. This can include documenting the changes in the Inspector's TxDOT diary and having both the Inspector and Contractor initial and date the agreed upon changes. The additional signs requested by the Engineer/Inspector shall not be subsidiary.
- The Contractor shall furnish sign supports listed in the "Compliant Work Zone Traffic Control Device List" (CWZTCD). The Contractor shall install the sign support in accordance with the manufacturer's recommendations. If there is a question regarding installation procedures, the Contractor shall furnish the Engineer a copy of the manufacturer's installation recommendations so that the Engineer can verify the correct procedures are being followed.
- The Contractor is responsible for sign installations and replacing signs with damaged or cracked substrates and/or damaged or marred reflective sheeting as directed by the Engineer/Inspector.
- Identification markings may be shown only on the back of the sign substrate. The maximum height of letters and/or company logos used for identification shall be 1".
- The Contractor shall replace damaged wood posts. New or damaged wood sign posts shall not be spliced.

Duration of Work (as defined by the "Texas Manual on Uniform Traffic Control Devices" Part VII)

- The Contractor is responsible for ensuring the sign support and substrate meets crashworthiness. For mowing operation all signs and supports are Short-term Duration for daytime work.
- The Contractor shall furnish the sign sizes shown on this sheet or as directed by the Engineer.

SIGN SUBSTRATES

- The Contractor shall ensure that the sign substrate is allowed for the type of sign support that is being used. The CWZTCD lists each substrate that can be used on the different types and models of sign supports.
- "Mesh" type materials are NOT an approved sign substrate.
- All wooden individual sign panels fabricated from 2 or more pieces shall have one or more plywood cleat, 1/2" thick by 6" wide, fastened to the back of the sign and extending fully across the sign. The cleat shall be attached to the back of the sign using wood screws that do not penetrate the face of the sign panel. The screws shall be placed on both sides of the splice and spaced at 6" centers. The Engineer may approve other methods of splicing the sign faces.

REFLECTIVE SHEETING

- Reflectorized signs shall be constructed of sheeting meeting the color and retro-reflectivity requirements of DMS-8300 or DMS-8310. The DMS specifications can be accessed from the following web address:
http://manuals.dot.state.tx.us:80/dynaweb/colmates/@Generic_CollectionView;cs=default;ts=default
- White sheeting, meeting the requirements of DMS-8300 Type C (High Specific Intensity), shall be used for signs with white background and channelizing devices.
- Orange sheeting, meeting the requirements of DMS-8300 Type E (Fluorescent Prismatic), shall be used for signs with orange backgrounds.

SIGN LETTERS

- All sign letters and numbers shall be clear, and open rounded type uppercase alphabet letters as approved by the Federal Highway Administration (FHWA) and as published in the "Standard Highway Sign Design for Texas" manual. Signs, letters and numbers shall be of first class workmanship in accordance with Department Standards and Specifications.

REMOVING OR COVERING

- Signs should be removed or completely covered when not mowing.
- Duct tape or other adhesive material shall NOT be affixed to a sign face.
- Signs and supports shall be removed by the end of the day.

SIGN SUPPORT WEIGHTS

- Where sign supports require the use of weights to keep from turning over, the use of sandbags with dry cohesionless sand is recommended.
- The sandbags will be tied shut to keep the sand from spilling and to maintain a constant weight.
- Rock, concrete, iron, steel or other solid objects will not be permitted for use as sign support weights.
- Sandbags should weigh a minimum of 35 lbs and a maximum of 50 lbs.
- Sandbags shall be made of a durable material that tears upon vehicular impact.
- Rubber (such as tire inner tubes) shall NOT be used for sandbags.
- Rubber ballasts (such as those used with cones or edgeline channelizers) shall NOT be used as sign support weights.
- Sandbags shall only be placed along or laid over the base supports of the traffic control device and shall not be suspended above ground level or hung with rope, wire, chains or other fasteners. Sandbags shall be placed along the length of the skids to weigh down the sign supports.
- Sandbags shall NOT be placed under the skid and shall not be used to level sign supports placed on slopes.

CONTRACTOR REQUIREMENTS FOR MAINTAINING PERMANENT SIGNS WITHIN THE PROJECT LIMITS

Any sign, sign support or traffic control device that is struck or damaged by the Contractor or his/her construction equipment shall be replaced or repaired as soon as possible by the Contractor at the Contractor's expense.

Only pre-qualified products shall be used. A copy of the "Compliant Work Zone Traffic Control Devices List" (CWZTCD) describes pre-qualified products and their sources and may be obtained by contacting:

Standards Engineer
Traffic Operations Division - TE
Texas Department of Transportation
125 East 11th Street
Austin, Texas 78701-2483
Phone (512) 416-3120
Fax (512) 416-3299

Instructions to locate the "CWZTCD" on TxDOT website are:

Start at website - www.dot.state.tx.us
Click on "About TxDOT",
Click on "Organizational Chart",
Click on "Traffic Operations Box",
Click on "Compliant Work Zone Traffic Control Devices",
Click on "View PDF".
This site is printable.

Texas Department of Transportation
Maintenance Division
Standard Plans

ROADSIDE TRAFFIC CONTROL PLAN

SHEET 1 OF 1		RS-TCP-05		NOT TO SCALE	
FILE: RSTCPO5.DGN	DN: LJB	CK: JG	DR: -	CR: -	NEG NO.:
© TxDOT FEBRUARY 2005		STATE DISTRICT	FEDERAL REGION	FEDERAL AID PROJECT	SHEET
REVISED: September 17, 2004	14				6
REVISED: FEBRUARY 2, 2005 Sign placement in TCP		COUNTY	CONTROL SECTION	JOB	HIGHWAY
REVISED:		BURNET, Etc.	6474	31	001US 281, Etc