

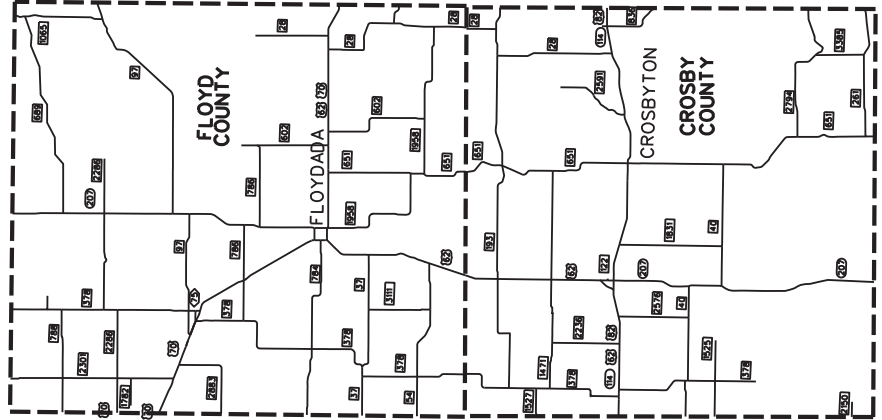
INDEX OF SHEETS

| SHEET NO. | DESCRIPTION |
|-----------|--------------------------------------|
| 1 | TITLE SHEET |
| 2A - 2E | SPECIFICATION DATA AND GENERAL NOTES |
| 3 | ESTIMATE AND QUANTITY SUMMARY |
| 4 - 4A | MOWING AREAS SUMMARY SHEET |
| 5 | #RSTCP-05 |
| 6 | #TCR13-548 |

STATE OF TEXAS
DEPARTMENT OF TRANSPORTATION
PLANS OF PROPOSED
ROUTINE MAINTENANCE CONTRACT

TYPE OF WORK:
ROADSIDE MOWING
 PROJECT NO.: RMC 647087001
 CS-4-6470-87-001
 HIGHWAY: VARIOUS

LIMITS OF WORK: CROSBY AND FLOYD COUNTIES



MAPS DO NOT DEPICT ALL ROADWAYS
 FOR THIS CONTRACT. SEE SHEETS 4-4A
 FOR EXACT ROADWAYS AND LIMITS.
 NO SCALE
 NO EQUATIONS
 NO EXCEPTIONS
 NO RAILROAD CROSSINGS

| | | | | | |
|-----------|-------|-------------|---------------|---------------|-------|
| YEAR | 2024 | PROJECT NO. | RMC 647087001 | SHEET NO. | 1 |
| STATE | TEXAS | DIST. | 008 | COUNTY | FLOYD |
| FILE NO. | 6470 | SECTION | 001 | CONTR. / RUPD | |
| FILE NAME | | DATE | 7/17/2024 | | |

*THE STANDARD SHEETS SPECIFICALLY IDENTIFIED ABOVE
 HAVE BEEN SELECTED BY ME OR UNDER MY RESPONSIBLE
 SUPERVISION AS BEING APPLICABLE TO THIS PROJECT.


 DeSigned by:
 Michael Stogor, P.E.
 Date
 8/1/2024

SPECIFICATIONS ADOPTED BY THE TEXAS DEPARTMENT OF
 TRANSPORTATION ARE REFERENCED BY THE ITEMS
 LISTED AND DATED AS FOLLOWS: SHALL COVER ON THIS
 PROJECT.

SUBMITTED
 FOR LETTING: 8/1/2024
 DeSigned by:
 Michael Stogor, P.E.
 C0C8B98D920C4DD... 20

APPROVED
 FOR LETTING: 8/1/2024
 DeSigned by:
 Michael Stogor, P.E.
 C0C8B98D920C4DD... 20

RMC 647087001

Project Number: RMC 647087001

County: Crosby / Floyd

Highway: Various

Sheet 2

Control: 6470-87-001

GENERAL NOTES:

Questions may be submitted via the Letting Pre-Bid Q&A web page. This webpage can be accessed from the Notice to Contractors dashboard located at the following Address: <https://tableau.txdot.gov/views/ProjectInformationDashboard/NoticetoContractors>

All contractor questions will be reviewed by the Engineer. All questions and any corresponding responses that are generated will be posted through the same Letting Pre-Bid Q&A web page.

The Letting Pre-Bid Q&A web page for each project can be accessed by using the dashboard to navigate to the project you are interested in by scrolling or filtering the dashboard using the controls on the left. Hover over the blue hyperlink for the project you want to view the Q&A for and click on the link in the window that pops up.

General Requirements and Covenants – Items 1 thru 9

Project Description – This project shall consist Right of Way mowing in the Crosby and Floyd County Maintenance Section areas.

Plainview Area Engineer
Heath Bozeman, P. E.
3900 S B LP IH27
Plainview, TX 79072
Phone: (806) 293-5484

Floyd County Maintenance Supervisor
Adolfo Chavarria
708 N 2nd
Floydada, TX 79235
PH (806) 983-3320

Crosby County Maintenance Supervisor
Ben Kautz
100 Avenue E
Ralls, TX 79357
PH (806) 253-2575

Each contract awarded by the Department stands on its own and as such, is separate from other contracts. A contractor awarded multiple contracts, must be capable and sufficiently staffed to concurrently process any or all contracts at the same time.

Item 2 - Instructions to Bidders

View the plans on-line or download from the web at:
<http://www.dot.state.tx.us/business/plansonline/plansonline.htm>

General Notes

Sheet A

Project Number: RMC 647087001

County: Crosby / Floyd

Highway: Various

Sheet 2

Control: 6470-87-001

Order plans from any of the plan reproduction companies shown on the web at:

http://www.dot.state.tx.us/business/contractors_consultants/repro_companies.htm

By signing this proposal, a bidder acknowledges that he/she has a copy of the “Standard Specifications for Construction of Highways, Streets and Bridges”, adopted by the Texas Department of Transportation, September 1, 2024. This specification book may be purchased from the Department.

Item 3- Award and Execution of Contract

This Contract includes work required under multiple Work Orders. Perform work as shown in the plans and continue until work is completed.

Item 4 – Scope of Work

If agreed upon in writing by both parties to the contract, the contract may be extended for an additional period of time not to exceed the original contract time period. The extended contract shall be for the original bid quantities, terms and conditions plus any approved change orders.

When the contract is extended by agreement of both parties, a Performance Bond, if required, and Payment Bond shall be executed in the amount of the extension before the additional work begins.

Item 5 – Control of Work

Notify TxDOT representative by 9:00 am each day for work completed the previous day, including hand trimming and cleanup. The Engineer will then inspect the section(s) of roadway for acceptance, not more than two (2) working days after notification.

Item 8 – Prosecution and Progress

Contract time charges shall begin upon issuance of “Authorization to Begin Work” letter. Seven Hundred and Thirty (730) days have been designated for this contract. Days shall be computed and charged in accordance with Article 8.3.1.5 “Calendar Day.”

Pre-Work Meeting - Prior to beginning work, a conference between the Contractor's representative and the Department will be arranged by the Department.

Submit the outline referenced in Item 8.5.5 in writing. Include all roadways in the sequential order of mowing and the number of day(s) allotted to each roadway. In the event that the schedule is not submitted to the Engineer, work will not be allowed to begin, but time charges will be charged.

Do not begin work each day until 30 minutes after sunrise and stop work 30 minutes before sundown unless authorized by the Engineer. During non-working hours, remove all equipment at least 30 feet from the roadway. No equipment repair will be allowed on the rights of way during non-working hours.

General Notes

Sheet B

Project Number: RMC 647087001

County: Crosby / Floyd

Highway: Various

Sheet 2

Control: 6470-87-001

Work Prosecution

Cycles shall begin upon issuance of a Work Order. Individual Work Order charge days shall run concurrently with Contract time charges.

Estimated working days per cycle are calculated as follows:

Mowing--total acreage per cycle divided by 150 acres per day.

Each cycle stands alone as to the number of working days allowed for that cycle. The contractor shall be charge liquidated damages per each cycle not completed in the specified time.

Remaining days on each cycle shall not be carried on to future cycles.

The designated number of working days per cycle is 32.

Item 500 - Mobilization

Mobilization for call out work will be paid for each callout work request.

Item 502 - Barricades, Signs and Traffic Handling

For this project, Barricades, Signs, and Traffic Handling will be subsidiary to the various bid items.

The Engineer will inspect and approve all traffic control devices prior to work starting on each cycle.

A traffic control plan is required as shown in the plans. For this Contract, this operation will be considered Short Term Stationary. The Contractor is responsible for furnishing, erecting, and maintaining all signs necessary to comply with the Texas Manual on Uniform Traffic Control Devices. Flags are required on all signs. The Contractor is responsible for compliance with all City, State, and Federal laws.

Use only signs that are 48" x 48". Use signs and sign supports that are listed in the "Compliant Work Zone Traffic Control Devices." This list is available from TxDOT and may be obtained by calling 512-416-3335, or visiting the Departments Web Site at www.dot.state.tx.us.

Item 505 - Truck Mounted Attenuator and Trailer Attenuator

Provide shadow vehicle equipped with Truck Mounted Attenuator (TMA) as shown on Traffic Control Plan (TCP) standard TCP (3-5)-18.

TMA's used for this project shall comply with requirements found in the Complaint Work Zone Traffic Control Devices list, which can be found at the following website.

<http://www.txdot.gov/business/resources/materials/producer-list.html>

General Notes

Sheet C

Project Number: RMC 647087001

County: Crosby / Floyd

Highway: Various

Sheet 2

Control: 6470-87-001

A minimum of One (1) TMA for Mowing Operations shall be available daily as noted on the summary sheet.

Item 730 – Roadside Mowing

Full Width (3.2.2) mowing unless otherwise indicated in the plans or as directed.

Curb and Gutter

Mow and hand trim behind curb and gutter in all developed areas if included in the limits of that roadway.

Omitted Areas

Areas not able to be mowed, or that do not need to be mowed, which have been included in the estimated measurements, may be omitted, at the discretion of the Engineer.

Areas omitted will be deducted from the pay measurement. These areas will usually be a minimum of two (2) acres. Areas will be noted in work order.

Easements

Mow State-owned easements and easement slopes as directed by the Engineer. These areas are included in the estimated measurements, except as indicated otherwise in the plans.

Equipment

The Engineer will inspect and approve all equipment prior to work starting on each cycle.

Keep mowers in good operating condition. Repair or replace any equipment the Engineer determines is defective to the point that it may affect the quality of the work.

Equip all decks, including bat-wings, with either safety chains or the manufacturer's safety device long enough to be in constant contact with the ground during operation.

Provide highly visible amber strobe warning lights on all tractors and work trucks.

Cutting Height

Cutting height shall be seven (7) inches when measured on level ground.

Areas left in a ragged condition will be re-mowed with no additional compensation. The Contractor will not be required to make more than two (2) additional passes.

Hand Trimming

General Notes

Sheet D

Project Number: RMC 647087001

Sheet 2

County: Crosby / Floyd

Control: 6470-87-001

Highway: Various

- Hand trimming is required for all tracts listed in the plans and is considered subsidiary to Item 730.
- Hand trimming shall be completed within 24 hours after mowing is completed on any section of Right of Way.
- Hand trim around appurtenances/objects, whether temporary or permanent.
- Perform hand trimming operations inside an established safety work zone area.
- Hand trim around metal beam guard fence included within the mowing limits. Extend hand trimming from the edge of the roadway, under the guard fence, to a minimum of five (5) feet, for the length of the metal beam guard fence and guardrail extruder terminal or terminal section.
- Hand trim all vegetation growing in and around the guardrail in rip-rap and non-mow areas.
- Hand trim all vegetation growing around appurtenances/objects behind curb and gutter.
- Hand trim around all safety lighting and/or traffic signal lighting. Hand trim a seven (7) foot radius around the base.
- Hand trim all vegetation growing in and around all rip-rap areas, including but not limited to all medians, islands, turnarounds, channels, slopes, etc.

DAMAGES

Charges for damages, including paved surfaces, rights of way, vegetation, and appurtenances, will be deducted from payments due to the contractor.

| Tract No. | | Highway | Crosby | | Ref. Marker | # Full Cycles | Acres Per Cycle | Total Acres Full Width |
|----------------------------------|------------|---------|---|--|-------------|---------------|-----------------|------------------------|
| | | | Limits | | | | | |
| 1 | FM 28 | | FLOYD C/L TO US82 | | 200 - 212 | 4 | 92 | 368 |
| 2 | FM 28 | | FROM FLOYD/CROSBY C/L TO FM 1958 | | 196 - 200 | 4 | 17 | 68 |
| 3 | FM 40 | | LUBBOCK C/L TO FM 651 | | 310 - 330 | 4 | 129 | 516 |
| 4 | FM 40 | | FROM CROSBY C/L TO FM 789 | | 306 - 310 | 4 | 54 | 216 |
| 5 | FM 193 | | FM 378 TO DICKENS C/L | | 312 - 342 | 4 | 197 | 788 |
| 6 | FM 261 | | FM 651 TO DICKENS C/L | | 330 - 340 | 4 | 69 | 276 |
| 7 | FM 378 | | FM 54 TO FLOYD/CROSBY C/L | | 198 - 202 | 4 | 28 | 112 |
| 8 | FM 378 | | FLOYD/CROSBY C/L TO SOUTH END OF RD | | 202 - 224 | 4 | 156 | 624 |
| 9 | FM 836 | | .6 MI N. OF 82 TO DICKENS C/L | | 206 - 212 | 4 | 30 | 120 |
| 10 | FM 651 | | FROM FLOYD/CROSBY C/L TO FM 1958 | | 194 - 196 | 4 | 22 | 88 |
| 11 | FM 651 | | FLOYD C/L TO GARZA C/L | | 196 - 230 | 4 | 235 | 940 |
| 12 | FM 1471 | | FM 378 TO FM 651 | | 312 - 328 | 4 | 115 | 460 |
| 13 | FM 1525 | | 3.4 MI E. OF 378 TO LUB. C/L | | 310 - 316 | 4 | 41 | 164 |
| 14 | FM 1527 | | LUBBOCK C/L TO FM 378 | | 312 - 314 | 4 | 15 | 60 |
| 15 | FM 1527 | | FROM CROSBY C/L TO FM 789 | | 308 - 312 | 4 | 40 | 160 |
| 16 | FM 1831 | | US 82 TO FM 40 | | 206 - 214 | 4 | 49 | 196 |
| 17 | FM 2236 | | FM 1471 TO US 62 | | 202 - 208 | 4 | 36 | 144 |
| 18 | FM 2576 | | US 62 TO FM 40 | | 206 - 212 | 4 | 38 | 152 |
| 19 | FM 2591 | | US 82 TO 5.5 MI. NORTH | | 204 - 210 | 4 | 40 | 160 |
| 20 | FM 2794 | | FM 651 TO DICKENS C/L | | 330 - 342 | 4 | 76 | 304 |
| 21 | FM 3385 | | FM 2794 TO FM 261 | | 224 - 228 | 4 | 26 | 104 |
| 22 | SH 207 | | US 62 TO GARZA C/L | | 230 - 252 | 4 | 139 | 556 |
| 23 | US 62 | | FROM LUBBOCK/CROSBY C/L TO FM 789 SOUTH | | 346 - 350 | 4 | 37 | 148 |
| 24 | US 62-01 | | LUBBOCK C/L TO US82 | | 350 - 360 | 4 | 65 | 260 |
| 25 | US 62 - 02 | | US 82 TO CROSBY/FLOYD C/L | | 360 - 368 | 4 | 81 | 324 |
| 26 | US 62-03 | | CROSBY/FLOYD C/L TO FM 54 | | 368 - 376 | 4 | 13 | 52 |
| 27 | US 82 | | US 62 TO DICKENS C/L | | 340 - 360 | 4 | 212 | 848 |
| 28 | FM 54 | | US 62 TO FLOYD/HALE C/L | | 316 - 328 | 4 | 63 | 252 |
| 29 | FM 54 | | FROM FM 789 IN PETERSBURG TO FLOYD/HALE C/L | | 312 - 316 | 4 | 40 | 160 |
| 30 | FM 1958 | | FROM FM 28 TO FM 651 | | 336 - 344 | 4 | 107 | 428 |
| 31 | FM 789 | | FROM FM 54 TO LUBBOCK/HALE C/L | | 194 - 198 | 4 | 30 | 120 |
| 32 | FM 789 | | LUBBOCK/HALE C/L TO FM 40 | | 198 - 214 | 4 | 128 | 512 |
| Estimated Acreage Totals: | | | | | | | 2420 | 9680 |

Notes:
 Tract 23: TMA required where median cable barrier present if mower deck extends into roadway. Estimated 2 days per cycle.

| | | |
|--------|-------------------------|-----------|
| STATE | MAINTENANCE PROJECT NO. | SHEET NO. |
| 06 | 0000000000 | 4 |
| COUNTY | CROSS / FLOYD | |
| TR | 05 | |
| CMT. | SECT. | |
| 640 | 87 | |
| | 00 | |
| | VARIOUS | |

MOWING AREAS SUMMARY SHEET

| Tract No. | Highway | Floyd | | | | Ref. Marker | # Full Cycles | Acres Per Cycle | Total Acres Full Width |
|----------------------------------|-------------|-------------------------------------|--|--|--|-------------|---------------|-----------------|------------------------|
| | | Limits | | | | | | | |
| 33 | US 70 | Hale C/L TO US 62 | | | | 320 - 338 | 4 | 234 | 936 |
| 34 | LP 75 | US 70 TO FM 378 | | | | 316 - 317 | 4 | 4 | 16 |
| 35 | SH 207 | Briscoe C/L TO US 62 | | | | 184 - 207 | 4 | 174 | 696 |
| 36 | US 62 | FM 54 TO Motley C/L | | | | 374 - 400 | 4 | 198 | 792 |
| 37 | FM 37 | FM 400 TO HALE C/L | | | | 320 - 328 | 4 | 63 | 252 |
| 38 | FM 37 | HALE C/L TO US 62 | | | | 328 - 338 | 4 | 117 | 468 |
| 39 | FM 97 | US 70 TO Motley C/L | | | | 320 - 346 | 4 | 123 | 492 |
| 40 | FM 602 | FM 786 TO FM 1958 | | | | 182 - 196 | 4 | 96 | 384 |
| 41 | FM 684 | FM 28 TO Motley C/L | | | | 338 - 340 | 4 | 10 | 40 |
| 42 | FM 784 | FM 400 TO HALE C/L | | | | 304 - 314 | 4 | 87 | 348 |
| 43 | FM 784 | HALE C/L TO SH 207 | | | | 314 - 328 | 4 | 103 | 412 |
| 44 | FM 786 | FM 378 TO North of FM 602 | | | | 318 - 332 | 4 | 103 | 412 |
| 45 | FM 788 | Hale C/L TO FM 378 | | | | 316 - 324 | 4 | 55 | 220 |
| 46 | FM 789 | FM 2883 TO FM 54 | | | | 180 - 194 | 4 | 110 | 440 |
| 47 | FM 1065 | From Briscoe C/L TO FM 97 | | | | 164 - 170 | 4 | 44 | 176 |
| 48 | FM 1782 | FM 2301 TO WEST of FM 2301 | | | | 312 - 314 | 4 | 15 | 60 |
| 49 | FM 1958 | US 62 TO FM 651 | | | | 324 - 334 | 4 | 69 | 276 |
| 50 | FM 2286 | Hale C/L TO East of SH 207 | | | | 310 - 330 | 4 | 137 | 548 |
| 51 | FM 2301 | Swisher C/L TO US 70 | | | | 170 - 182 | 4 | 78 | 312 |
| 52 | FM 2883 | FM 789 TO HALE C/L | | | | 308 - 312 | 4 | 20 | 80 |
| 53 | FM 2883 | HALE C/L TO US 70 | | | | 312 - 318 | 4 | 31 | 124 |
| 54 | FM 3111 | FM 37 TO FM 54 | | | | 188 - 192 | 4 | 34 | 136 |
| 55 | Spur FM 378 | FM 378 East TO Deadend | | | | 168 - 169 | 4 | 8 | 32 |
| 56 | FM 378 | Briscoe C/L South TO FM 54 | | | | 164 - 198 | 4 | 233 | 932 |
| 57 | FM 689 | SH 207 TO FM 1065 | | | | 324 - 340 | 4 | 117 | 468 |
| 58 | FM 651 | US 62 TO FM 1958 | | | | 186-192 | 4 | 53 | 212 |
| 59 | FM 28 | 5.3 MILES NORTH OF US 62 TO FM 1958 | | | | 180 - 196 | 4 | 107 | 428 |
| Estimated Acreage Totals: | | | | | | | | 2423 | 9692 |

COMBINED TOTALS
 MOWING ACRES PER CYCLE 4843
 TOTAL MOWING ACRES 19372
 WORKING DAYS PER CYCLE 32
 TOTAL WORKING DAYS 128

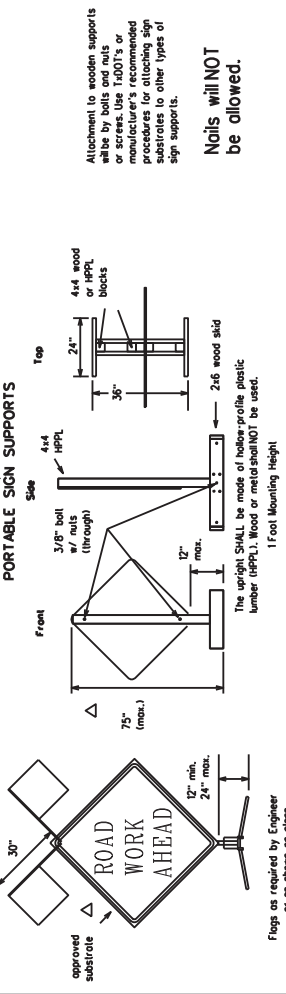
MOWING AREAS SUMMARY SHEET

| | | |
|-------|-------------------------|---------|
| STATE | MAINTENANCE PROJECT NO. | SHEET |
| 06 | 0000000000 | 44 |
| TX | CROSS / FLD | 05 |
| CONF. | SECT. | JOB |
| 640 | 87 | 000 |
| | | VARIOUS |

EXAMPLES OF SIGN SUPPORTS

SHORT TERM, DURATION, DAYTIME USE ONLY PORTABLE SIGN SUPPORTS

△ See the CWZTCO for the type of sign substrate that can be used for each approved sign support.



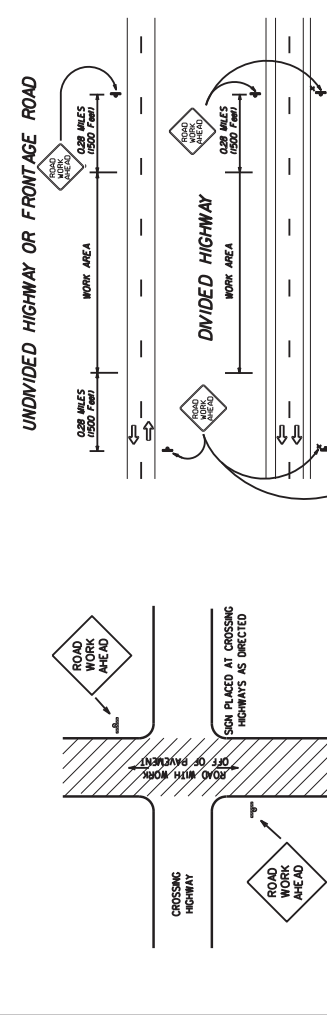
SIGN IN ACCORDANCE WITH THE TEXAS MANUAL ON UNIFORM TRAFFIC CONTROL DEVICES FOR STREETS AND HIGHWAYS

MOWERS AHEAD SIGNS ARE USED FOR MOWING OPERATIONS.

LITTER PICKUP AHEAD, ROAD WORK AHEAD AND WORKER AHEAD SIGNS ARE USED AS DIRECTED FOR OTHER MANTENANCE OPERATIONS WHEN THE WORK OCCURS OFF OF THE PAVED HIGHWAY SURFACE.

ROLL-UP SIGNS CONFORMING TO DMS-8310 AND THE CWZTCO ALLOWED

*Letter dimensions and spacing for "CW21-SPECIAL" is the same as CW20-10.



TYPICAL LOCATION OF SIGNS AT HIGHWAY CROSSING

WORK AREA IS A MAXIMUM OF 20 MILES UNLESS OTHERWISE DIRECTED. SIGNS MAY REMAIN IN PLACE ONLY DURING DAYLIGHT HOURS. SIGNS ARE TO BE PLACED 6 TO 12 FEET OFF OF THE PAVED SURFACE UNLESS OTHERWISE DIRECTED. ROAD WORK AHEAD SIGNS SHOWN AS EXAMPLES ONE OF THE FOUR TYPE SIGNS WILL BE USED AS DIRECTED.

* SIGNS IN THE MEDIAN ARE REQUIRED WHEN WORK OCCURS IN MEDIAN

TRAFFIC CONTROL PLAN FOR WORK OFF OF THE PAVED SURFACE.

GENERAL NOTES FOR WORK ZONE SIGNS

- Contractor shall maintain and monitor signs in a straight and plumb condition and/or as directed by the Engineer.
- Wooden sign posts shall be pointed white.
- Barricades shall NOT be used as sign supports.
- Flags shall be installed in accordance with the plans or as directed by the Engineer. Signs shall be used to regulate, warn, and control traffic.
- The Contractor may furnish either the sign design shown in the plans or the "Standard Highway Sign Designs for Texas" (SHSD). The Engineer/Inspector may require the Contractor to furnish other work zone signs that are shown in the TMUTCD but may have been omitted from the plans. Any variation in the plans shall be documented by written agreement between the Engineer and the Contractor's Responsible Person. All changes must be documented in writing before being implemented. This can include documenting the changes in the Inspector's I-2001 diary and having both the Inspector and Contractor initial and date the agreed upon changes. The additional signs shall be furnished by the Contractor.
- The Contractor shall furnish signs as listed in the "Work Zone Traffic Control/Device List" (CWZTCO). The Contractor shall install the sign support in accordance with the manufacturer's recommendations. If there is a question regarding installation procedures, the Contractor shall furnish the Engineer a copy of the manufacturer's installation recommendations so that the Engineer can verify the correct procedures are being followed.
- The Contractor is responsible for sign installation and replacing signs with damaged or cracked substrates and/or damaged or marred reflective sheeting as directed by the Engineer/Inspector.
- Signs shall be shown only on the back of the sign substrate. The maximum height of letters and/or company logos used for identification shall be 7".
- The Contractor shall replace damaged wood posts. New or damaged wood sign posts shall not be spliced.
- Duration of Work (as defined by the "Texas Maintenance Uniform Traffic Control/Devices" Part VI)
- The Contractor is responsible for ensuring the sign support and substrate meets crashworthiness. For meeting operation of signs and supports are Short-Term. Duration for daytime work.
- The Contractor shall furnish the sign sizes shown on this sheet or as directed by the Engineer.
- The Contractor shall ensure that the sign substrate is allowed for the type of sign support that is being used. The CWZTCO lists each substrate that can be used on the different types and models of sign supports.
- "Mesh" type materials are NOT an approved sign substrate.
- All wooden individual sign panels fabricated from 2" or more pieces shall have one or more plywood cleat, 1/2" thick by 6" wide, fastened to the back of the sign and extending fully across the sign. The cleat shall be attached to the back of the sign using wood screws. The Engineer may approve other methods of spacing the sign faces.
- Reflective sheeting shall be applied to the sign faces.
- Reflective sheeting shall be constructed of sheathing meeting the color and retro-reflectivity requirements of DMS-8300 or DMS-8310. The DMS specifications can be accessed from the following web address: http://monos.dot.state.tx.us/80/dynweb/computer/Generic_Collection/Videos/default
- Orange sheeting, meeting the requirements of DMS-8300 Type C (High Specific Intensity), shall be used for signs with white background.
- Sign letters shall be constructed of DMS-8300 Type E (Fluorescent Prismatic), shall be used for signs with orange backgrounds.
- All sign letters and numbers shall be clear, and open rounded type uppercase alphabet letters as approved by the Federal Highway Administration (FHWA) and as published in the "Standard Highway Sign Design for Texas" manual. Signs, letters and numbers shall be of first class workmanship in accordance with Department Standards and Specifications.

REMOVING OR COVERING

- Signs should be removed or completely covered when not moving.
- Dark tape or other opaque material shall NOT be affixed to a sign face.
- Signs and supports shall be removed by the end of the day.

SIGN SUPPORT WEIGHTS

- Where sign supports require the use of weights to keep from turning over, the use of sandbags with dry cohesionless sand is recommended. The sandbags will be tied shut to keep the sand from spilling and to maintain a constant weight.
- Rock, concrete, iron, steel or other solid objects will not be permitted for use as sign support weights.
- Sandbags should weigh a minimum of 35 lbs and a maximum of 50 lbs.
- Sandbags shall be made of a durable material that tears upon vehicular impact.
- Rubber ballasts (such as tire inner tubes) shall NOT be used for sandbags.
- Rubber ballasts (such as those used with cones or delineators) shall NOT be used as sign support weights.
- Sandbags shall only be placed along or laid over the base supports of the traffic cone/delineator and shall not be suspended above ground level.
- Sandbags shall be placed along with ropes, chains or other fasteners. Sandbags shall be placed along the length of the studs to weigh down the sign supports.
- Sandbags shall NOT be placed under the skirt and shall not be used to level sign supports placed on slopes.

CONTRACTOR REQUIREMENTS FOR MAINTAINING PERMANENT SIGNS WITHIN THE PROJECT LIMITS

All signs, supports or weights, reflective sheeting that is damaged by the Contractor or his/her construction equipment shall be replaced or repaired as soon as possible by the Contractor at the Contractor's expense.

Only pre-qualified products shall be used. A copy of the "Contractor Traffic Control Device List" (CWZTCO) describes pre-qualified products and their sources and may be obtained by contacting:

Standards Engineer
Traffic Operations Division - TE
Texas Department of Transportation
125 East 17th Street
Austin, Texas 78701-2483
Phone (512) 416-3100
Fax (512) 416-3799

Instructions to locate the "CWZTCO" on TxDOT website are:
Click on "About TxDOT"
Click on "Organizational Chart"
Click on "Traffic Operations Box"
Click on "Work Zone Traffic Control/Devices"
This site is password-protected.

Texas Department of Transportation
Maintenance Division
Standard Plans

ROADSIDE
TRAFFIC CONTROL PLAN

SHEET 1 OF 1
RS-TCP-05
NOT TO SCALE

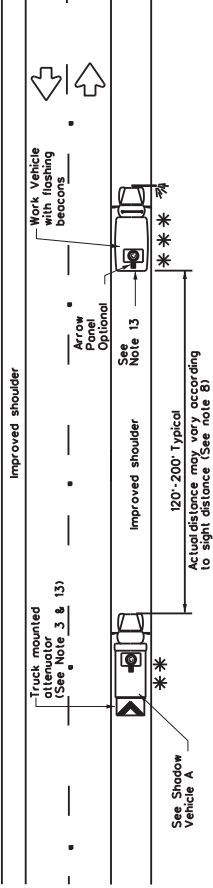
| | | | | | |
|---------------------|------------|-----|------|------|---------------|
| REV: | DATE: | BY: | CHK: | APP: | PROJECT NO.: |
| RS-TCP05.DGN | 10/11/05 | JG | JG | DR | 647087001 |
| REVISED: | DATE: | BY: | CHK: | APP: | PROJECT NO.: |
| REVISED: 10/26/07 | 10/26/07 | LB | LB | 6 | RMC 647087001 |
| REVISED: 08/07/2008 | 08/07/2008 | LB | LB | 6 | RMC 647087001 |
| REVISED: | DATE: | BY: | CHK: | APP: | PROJECT NO.: |
| REVISED: | DATE: | BY: | CHK: | APP: | PROJECT NO.: |

CROSSBY / FLOYD 6470 87 001 MARIQUIS

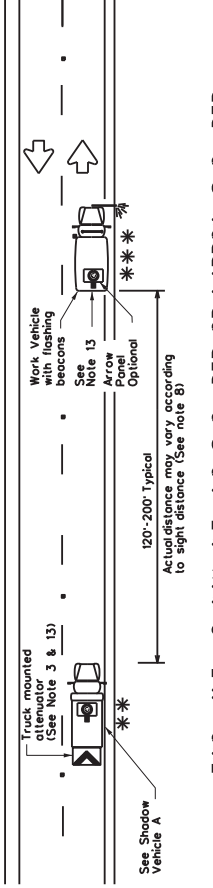
| | | | | | | | | | | | | | | | |
|---|---|---|---|---|---|---|---|---|----|----|----|----|----|----|----|
| 1 | 2 | 3 | 4 | 5 | 6 | 7 | 8 | 9 | 10 | 11 | 12 | 13 | 14 | 15 | 16 |
| 1 | 2 | 3 | 4 | 5 | 6 | 7 | 8 | 9 | 10 | 11 | 12 | 13 | 14 | 15 | 16 |

LETTERS DISPLAYED

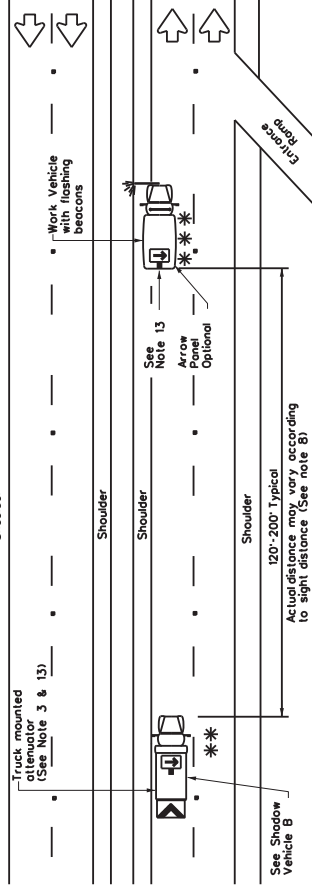
ACT: No warranty of any kind is made by TxDOT for any purpose whatsoever. The use of this standard is governed by the "Texas Engineering Practice other formats or for incorrect results or damages resulting from its use. TxDOT assumes no responsibility for the conversion of this standard to



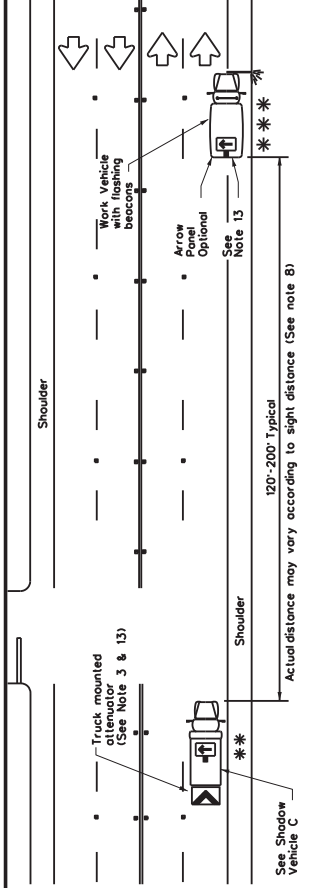
TWO LANE HIGHWAY WITH PAVED SHOULDERS MINIMUM 8'



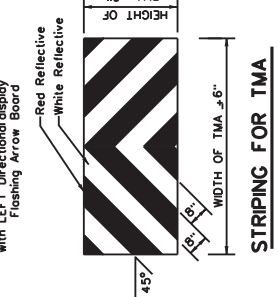
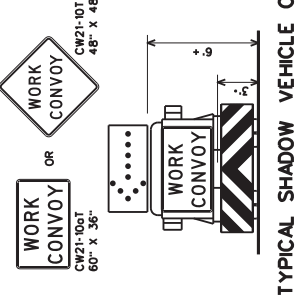
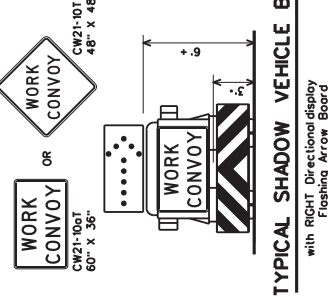
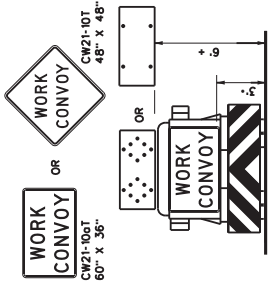
TWO LANE HIGHWAY WITH NO SHOULDER OR NARROW SHOULDER



MULTILANE HIGHWAY



MULTILANE HIGHWAY



| LEGEND | | ARROW BOARD DISPLAY |
|--------|---|---|
| ** | Shadow Vehicle | |
| ** | Work Vehicle | |
| → | Sign | RIGHT Directional |
| ← | Heavy Work Vehicle | LEFT Directional |
| ↔ | Traffic Flow | Double Arrow |
| ⚠ | Truck Mounted Attenuator (TMA) or Trailer Attenuator (TA) | CAUTION (Alternating Diamond or Corner Flash) |

| TYPICAL USAGE | | LONG TERM |
|---------------|--------------|------------|
| MOBILE | SHORT TERM | STATIONARY |
| ✓ | INTERMEDIATE | STATIONARY |

GENERAL NOTES

- All traffic control devices shall be in accordance with the "Texas Manual on Uniform Traffic Control Devices" (TMUTCD), latest edition.
- The use of amber high intensity rotating, flashing, oscillating, or strobe lights on vehicles are required. Blue high intensity rotating, flashing, oscillating or strobe lights when mounted on the driver's side of the vehicle may be operated simultaneously with the amber beacons or strobe lights.
- The use of truck mounted attenuators (TMA) on the Shadow Vehicle is required.
- Striping on the back panel of all TMA shall be 8" red reflective stripes with white reflective stripes in a reverse "V" design. Reflective sheeting shall meet or exceed the reflectivity and color requirements of DEPARTMENTAL MATERIAL SPECIFICATION DMS-9300, TYPE A.
- Flashing Arrow Panels shall be Type B or Type C as per BC Standards. The panel operation shall be controlled from inside the vehicle.
- Each vehicle shall have two-way radio communication capability.
- When the work convoy must change lanes, the Shadow Vehicle should change lanes first to protect the Work Vehicle.
- Spacing between Shadow and Work Vehicle will vary depending on sight distance restrictions. Motorists approaching the work convoy shall be advised to slow down and/or change lanes as they approach the Work Convoy.
- Use of an arrow panel on the Work Vehicle is optional except as provided in note 13, but may be required by the Engineer. If an arrow panel is used, flashing beacons, strobe lights or beacons shall be separated as practicable at the rear of the Work Vehicle as they are required.
- On two-lane two-way roadways, the Work and Shadow Vehicles should pullover periodically to allow motor vehicle traffic to pass.
- Work and Shadow Vehicles should stay on the shoulder of highways having 8' or wider shoulders when possible.
- A Trip Vehicle may be added to the operation when approved by the Engineer. See TCP(3-5) series standards.
- The shadow vehicle may be omitted on conventional roadways when a TMA or TA and arrow panels mounted to the herbicide vehicle. A separate shadow vehicle will be required on expressways and Freeways.

Texas Department of Transportation
Traffic Operations Division Standard

TRAFFIC CONTROL PLAN
MOBILE OPERATIONS
HERBICIDE TRUCK OPERATIONS
TCP(3-5)-18

| | | | | | |
|------------------|------------|------------------|-----------|------------------|-----------|
| FILE: | 103-3-5-99 | REV: | 1-001 | REV: | 1-001 |
| DATE: | July 2015 | DATE: | July 2015 | DATE: | July 2015 |
| REVISED BY: | ARB | REVISED BY: | ARB | REVISED BY: | ARB |
| DATE: | 87 | DATE: | 87 | DATE: | 87 |
| BY: | ARB | BY: | ARB | BY: | ARB |
| DATE: | 5 | DATE: | 5 | DATE: | 5 |
| COUNTY: | | COUNTY: | | COUNTY: | |
| CORRECT / FLOOR: | | CORRECT / FLOOR: | | CORRECT / FLOOR: | |
| SHEET NO.: | | SHEET NO.: | | SHEET NO.: | |
| TOTAL SHEETS: | 6 | TOTAL SHEETS: | 6 | TOTAL SHEETS: | 6 |