

SUBJECT: PLANS AND PROPOSAL ADDENDUMS

PROJECT: C 172-6-99

CONTROL: 0172-06-099

COUNTY: TARRANT

LETTING: 03/05/2024

REFERENCE NO: 0223

PROPOSAL ADDENDUMS

-
- PROPOSAL COVER
 - BID INSERTS (SH. NO.: 4-8, 5-8 thru 8-8)
 - GENERAL NOTES (SH. NO.:)
 - SPEC LIST (SH. NO.:)
 - SPECIAL PROVISIONS:)
 - ADDED:
 -
 - DELETED:
 -
 - SPECIAL SPECIFICATIONS:
 - ADDED:
 -
 - DELETED:
 -
 - OTHER: See changes below

DESCRIPTION OF ABOVE CHANGES
(INCLUDING PLANS SHEET CHANGES)

BID INSERTS: SHEET 4-8 - Revise quantity for items 545-6003, 545-6005
and 545-6007
Added item 545-6010
SHEETS 5-8 thru 8-8 - Sheets may have shifted due to changes
above

PLAN SHEETS: Sheets 2, 10, 10A, 10B, 11, 12, 27 and 79 revised due to
changes above
Added sheets 51A, 51B, 51C 76A and 76B due to changes above

CK: DW: CK: DW:

SHEET NO. DESCRIPTION: INDEX OF SHEETS

GENERAL

- 1 TITLE SHEET
- 2 INDEX OF SHEETS
- 3 PROJECT LAYOUT
- 4-5 EXISTING TYPICAL SECTIONS
- 6-8 PROPOSED TYPICAL SECTIONS
- 9, 9A - 9F GENERAL NOTES
- 10, 10A - 10B ESTIMATE AND QUANTITIES
- 11-14 SUMMARY OF QUANTITIES
- 15-25 SUMMARY OF SMALL SIGNS

TRAFFIC CONTROL PLAN

- 26-27 TCP NARRATIVE
- 28 TCP TYPICAL SECTIONS FOR PROPOSED CONCRETE RAIL
- 29-51 TCP LAYOUT FOR PROPOSED CONCRETE RAIL
- 51A-51B TEMPORARY CRASH CUSHION SUMMARY SHEET
- 51C PERMANENT CRASH CUSHION SUMMARY SHEET

TRAFFIC CONTROL PLAN STANDARDS

- 52-63 * BC(1)-21 THRU BC(12)-21
- 64 * TCP(5-1)-18
- 65 * TCP(6-1)-12
- 66 * TCP(6-2)-12
- 67 * TCP(6-3)-12
- 68 * TCP(6-4)-12
- 69 * TCP(6-5)-12
- 70 * TCP(6-6)-12
- 71 * TCP(7-1)-13
- 72-73 * SSCB(2)-10
- 74 * ABSORB(M)-19
- 75 * SLED-19
- 76 * WZ(UL)-13
- 76A * SMTC(W)-16
- 76B * TAU-II-R(W)-16

ROADWAY

- 77-78 HORIZONTAL ALIGNMENT DATA SHEET
- 79-101 ROADWAY PLAN
- 102 ARMOR JOINT DETAILS
- 103 CONSTRUCTION JOINT DETAILS
- 104 RELIEF JOINT DETAILS
- 105-106 MISCELLANEOUS JOINT DETAILS
- 107-112 MISCELLANEOUS ROADWAY DETAILS
- 113 ROADWAY CORING DATA
- 114-136 REMOVAL PLAN

SHEET NO. DESCRIPTION: INDEX OF SHEETS

ROADWAY STANDARDS

- 137 * CCCG (FTW)
- 138 * CRR
- 139 * JS-14
- 140-141 * REPCP-14
- 142 * GF(31)-19
- 143 * GF(31)DAT-19
- 144-145 * GF(31)TR TL3-20
- 146 * GF(31)MS-19
- 147 * TE(HMAC)-11
- 148 * SGT(10S)31-16
- 149 * SGT(11S)31-18
- 150 * SGT(12S)31-18
- 151 * SGT(15)31-20
- 152 * QGELITE(M10)(N)-20
- 153 * REACT(M)-21
- 154 * TAU-II-R(N)-16
- 155-156 * TYPE SSTR
- 157-158 * TYPE T551
- 159 * TRF

TRAFFIC

- 160-182 PAVEMENT MARKING PLAN
- 183-205 SIGNING PLAN

TRAFFIC STANDARDS

- 206 * FPM(1)-22
- 207 * FPM(2)-22
- 208 * FPM(3)-22
- 209 * FPM(4)-22
- 210 * FPM(5)-22
- 211 * FPM(6)-22
- 212 * D&OM(1)-20
- 213 * D&OM(2)-20
- 214 * D&OM(3)-20
- 215 * D&OM(4)-20
- 216 * D&OM(5)-20
- 217 * D&OM(6)-20
- 218 * D&OM(VIA)-20
- 219 * PM(1)-22
- 220 * PM(2)-22
- 221 * SMD(GEN)-08
- 222 * SMD(SLIP-1)-08
- 223 * SMD(SLIP-2)-08
- 224 * SMD(SLIP-3)-08
- 225-227 * BMCS
- 228 * RS(1)-23

SHEET NO. DESCRIPTION: INDEX OF SHEETS

RAILROAD

- 228A-228B RAILROAD REQUIREMENTS FOR NON-BRIDGE CONSTRUCTION PROJECTS
- 228C RAILROAD SCOPE OF WORK - PROJECT SPECIFIC DETAILS

ENVIRONMENTAL

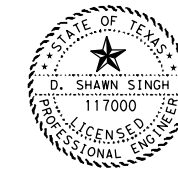
- 229 EPIC
- 230-231 STORMWATER POLLUTION PREVENTION PLAN (SWP3)

ENVIRONMENTAL STANDARDS

- 232 * CURB INLET SEDIMENT PROTECTION (FTW)
- 233-235 * EC(9)-16

DATE: 2/22/2024 8:07:18 PM
 FILE: c:\pwwork1\020266507\US287_GEN_INDEX.dgn

1 DSS 2/22/2024



THE STANDARD SHEETS SPECIFICALLY IDENTIFIED ON THIS SHEET WITH A *** HAVE BEEN SELECTED BY ME OR UNDER MY RESPONSIBLE SUPERVISION AS BEING APPLICABLE TO THIS PROJECT.

D. Shawn Singh, P.E. 2/22/2024
 D. SHAWN SINGH DATE

NO.	DATE	REVISION	BY

Kimley»Horn F-928
 2024
 Texas Department of Transportation
 US 287

INDEX OF SHEETS

CONT	SECT	JOB	HIGHWAY
0172	06	099	US 287
DIST	COUNTY	SHEET NO.	
FTW	TARRANT	2	



Estimate & Quantity Sheet

CONTROLLING PROJECT ID 0172-06-099

DISTRICT Fort Worth
HIGHWAY US 287

COUNTY Tarrant

CONTROL SECTION JOB				0172-06-099		TOTAL EST.	TOTAL FINAL
PROJECT ID				A00129867			
COUNTY				Tarrant			
HIGHWAY				US 287			
ALT	BID CODE	DESCRIPTION	UNIT	EST.	FINAL		
	104-6009	REMOVING CONC (RIPRAP)	SY	530.000		530.000	
	104-6011	REMOVING CONC (MEDIANS)	SY	93.000		93.000	
	104-6021	REMOVING CONC (CURB)	LF	1,442.000		1,442.000	
	104-6054	REMOVING CONCRETE(MOW STRIP)	LF	2,887.500		2,887.500	
	105-6013	REMOVING STAB BASE & ASPH PAV (9")	SY	78.000		78.000	
	354-6013	PLAN & TEXT CONC PAV(0" TO 1/2")	SY	23,134.000		23,134.000	
	354-6021	PLANE ASPH CONC PAV(0" TO 2")	SY	29,834.000		29,834.000	
	354-6045	PLANE ASPH CONC PAV (2")	SY	350,311.000		350,311.000	
	361-6002	FULL - DEPTH REPAIR CRCP (8")	SY	1,500.000		1,500.000	
	420-6066	CL C CONC (RAIL FOUNDATION)	CY	830.000		830.000	
	428-6001	PENETRATING CONCRETE SURFACE TREATMENT	SY	25,940.000		25,940.000	
	432-6002	RIPRAP (CONC)(5 IN)	CY	97.000		97.000	
	432-6007	RIPRAP (CONC)(CL C)	CY	853.000		853.000	
	432-6045	RIPRAP (MOW STRIP)(4 IN)	CY	594.000		594.000	
	438-6002	CLEANING AND SEALING EXIST JOINTS(CL3)	LF	2,657.000		2,657.000	
	438-6004	CLEANING AND SEALING EXIST JOINTS(CL7)	LF	1,424.000		1,424.000	
	438-6010	RESIZING AND SEALING JOINTS	LF	1,791.000		1,791.000	
	450-6014	RAIL (TY T551)	LF	5,270.000		5,270.000	
	450-6023	RAIL (TY SSTR)	LF	2,616.000		2,616.000	
	500-6001	MOBILIZATION	LS	1.000		1.000	
	502-6001	BARRICADES, SIGNS AND TRAFFIC HANDLING	MO	7.000		7.000	
	506-6040	BIODEG EROSN CONT LOGS (INSTL) (8")	LF	1,584.000		1,584.000	
	506-6043	BIODEG EROSN CONT LOGS (REMOVE)	LF	1,584.000		1,584.000	
	512-6001	PORT CTB (FUR & INST)(SGL SLOPE)(TY 1)	LF	8,400.000		8,400.000	
	512-6025	PORT CTB (MOVE)(SGL SLP)(TY 1)	LF	7,830.000		7,830.000	
	512-6049	PORT CTB (REMOVE)(SGL SLP)(TY 1)	LF	8,400.000		8,400.000	
	512-6058	PORT CTB (REMOVE)(LOW PROF)(TY 2)	LF	240.000		240.000	
	529-6002	CONC CURB (TY II)	LF	1,442.000		1,442.000	
	529-6008	CONC CURB & GUTTER (TY II)	LF	353.000		353.000	
	533-6001	RUMBLE STRIPS (SHOULDER)	LF	125,295.000		125,295.000	
	536-6002	CONC MEDIATE	SY	93.000		93.000	
	540-6001	MTL W-BEAM GD FEN (TIM POST)	LF	11,705.500		11,705.500	
	540-6005	TERMINAL ANCHOR SECTION	EA	20.000		20.000	
	540-6006	MTL BEAM GD FEN TRANS (THRIE-BEAM)	EA	7.000		7.000	
	542-6001	REMOVE METAL BEAM GUARD FENCE	LF	21,100.000		21,100.000	
	542-6002	REMOVE TERMINAL ANCHOR SECTION	EA	32.000		32.000	
	542-6003	REMOVE DOWNSTREAM ANCHOR TERMINAL	EA	14.000		14.000	

1 DSS
2/22/2024



DISTRICT	COUNTY	CCSJ	SHEET
Fort Worth	Tarrant	0172-06-099	10



Estimate & Quantity Sheet

CONTROLLING PROJECT ID 0172-06-099

DISTRICT Fort Worth
HIGHWAY US 287

COUNTY Tarrant

CONTROL SECTION JOB				0172-06-099		TOTAL EST.	TOTAL FINAL
PROJECT ID				A00129867			
COUNTY				Tarrant			
HIGHWAY				US 287			
ALT	BID CODE	DESCRIPTION	UNIT	EST.	FINAL		
	542-6004	RM MTL BM GD FENCE TRANS (THRIE-BEAM)	EA	5.000		5.000	
	544-6001	GUARDRAIL END TREATMENT (INSTALL)	EA	22.000		22.000	
	544-6003	GUARDRAIL END TREATMENT (REMOVE)	EA	24.000		24.000	
	545-6003	CRASH CUSH ATTEN (MOVE & RESET)	EA	20.000		20.000	
	545-6005	CRASH CUSH ATTEN (REMOVE)	EA	13.000		13.000	
	545-6007	CRASH CUSH ATTEN (INSTL)(L)(N)(TL3)	EA	18.000		18.000	
	545-6010	CRASH CUSH ATTEN (INSTL)(L)(W)(TL3)	EA	1.000		1.000	
	545-6019	CRASH CUSH ATTEN (INSTL)(S)(N)(TL3)	EA	12.000		12.000	
	550-6003	CHAIN LINK FENCE (REMOVE)	LF	5,915.000		5,915.000	
	644-6001	IN SM RD SN SUP&AM TY10BWG(1)SA(P)	EA	13.000		13.000	
	644-6004	IN SM RD SN SUP&AM TY10BWG(1)SA(T)	EA	47.000		47.000	
	644-6007	IN SM RD SN SUP&AM TY10BWG(1)SA(U)	EA	25.000		25.000	
	644-6009	IN SM RD SN SUP&AM TY10BWG(1)SB(P)	EA	2.000		2.000	
	644-6012	IN SM RD SN SUP&AM TY10BWG(1)SB(T)	EA	4.000		4.000	
	644-6015	IN SM RD SN SUP&AM TY10BWG(1)SB(U)	EA	3.000		3.000	
	644-6030	IN SM RD SN SUP&AM TYS80(1)SA(T)	EA	17.000		17.000	
	644-6033	IN SM RD SN SUP&AM TYS80(1)SA(U)	EA	1.000		1.000	
	644-6042	IN SM RD SN SUP&AM TYS80(1)SB(T)	EA	2.000		2.000	
	644-6064	IN BRIDGE MNT CLEARANCE SGN ASSM(TY N)	EA	6.000		6.000	
	644-6065	IN BRIDGE MNT CLEARANCE SGN ASSM(TY S)	EA	2.000		2.000	
	644-6076	REMOVE SM RD SN SUP&AM	EA	120.000		120.000	
	658-6013	INSTL DEL ASSM (D-SW)SZ (BRF)CTB	EA	65.000		65.000	
	658-6026	INSTL DEL ASSM (D-SY)SZ (BRF)CTB	EA	48.000		48.000	
	658-6027	INSTL DEL ASSM (D-SY)SZ (BRF)CTB (BI)	EA	9.000		9.000	
	658-6061	INSTL DEL ASSM (D-SW)SZ 1(BRF)GF2	EA	38.000		38.000	
	658-6064	INSTL DEL ASSM (D-SY)SZ 1(BRF)GF2	EA	105.000		105.000	
	658-6100	INSTL OM ASSM (OM-2Z)(WFLX)GND(BI)	EA	20.000		20.000	
	662-6005	WK ZN PAV MRK NON-REMOV (W)6"(BRK)	LF	26,053.000		26,053.000	
	662-6008	WK ZN PAV MRK NON-REMOV (W)6"(SLD)	LF	62,563.000		62,563.000	
	662-6012	WK ZN PAV MRK NON-REMOV (W)8"(SLD)	LF	11,446.000		11,446.000	
	662-6014	WK ZN PAV MRK NON-REMOV (W)12"(SLD)	LF	5,017.000		5,017.000	
	662-6037	WK ZN PAV MRK NON-REMOV (Y)6"(SLD)	LF	62,732.000		62,732.000	
	666-6018	REFL PAV MRK TY I (W)6"(DOT)(100MIL)	LF	1,666.000		1,666.000	
	666-6036	REFL PAV MRK TY I (W)8"(SLD)(100MIL)	LF	11,446.000		11,446.000	
	666-6042	REFL PAV MRK TY I (W)12"(SLD)(100MIL)	LF	5,017.000		5,017.000	
	666-6048	REFL PAV MRK TY I (W)24"(SLD)(100MIL)	LF	56.000		56.000	
	666-6054	REFL PAV MRK TY I (W)(ARROW)(100MIL)	EA	11.000		11.000	

1 DSS
2/22/2024



DISTRICT	COUNTY	CCSJ	SHEET
Fort Worth	Tarrant	0172-06-099	10A



Estimate & Quantity Sheet

CONTROLLING PROJECT ID 0172-06-099

DISTRICT Fort Worth
HIGHWAY US 287

COUNTY Tarrant

CONTROL SECTION JOB				0172-06-099		TOTAL EST.	TOTAL FINAL
PROJECT ID				A00129867			
COUNTY				Tarrant			
HIGHWAY				US 287			
ALT	BID CODE	DESCRIPTION	UNIT	EST.	FINAL		
	666-6078	REFL PAV MRK TY I (W)(WORD)(100MIL)	EA	9.000		9.000	
	666-6306	RE PM W/RET REQ TY I (W)6"(BRK)(100MIL)	LF	26,053.000		26,053.000	
	666-6309	RE PM W/RET REQ TY I (W)6"(SLD)(100MIL)	LF	62,563.000		62,563.000	
	666-6321	RE PM W/RET REQ TY I (Y)6"(SLD)(100MIL)	LF	62,732.000		62,732.000	
	666-6350	REFL PAV MRK TY I (W)12"(DOT)(100MIL)	LF	428.000		428.000	
	672-6010	REFL PAV MRKR TY II-C-R	EA	2,369.000		2,369.000	
	730-6107	FULL - WIDTH MOWING	CYC	2.000		2.000	
	731-6007	PAVEMENT EDGES, STRUCTURES & FIXTURES	MI	4.934		4.934	
	734-6002	LITTER REMOVAL	CYC	2.000		2.000	
	738-6010	CLEANING / SWEEPING (SPOT)	MI	4.934		4.934	
	752-6003	TREE TRIMMING / BRUSH REMOVAL	MI	4.934		4.934	
	764-6001	DRAIN INLET CLEANING	EA	212.000		212.000	
	785-6005	BRIDGE JOINT REPAIR (SEJ)	LF	665.000		665.000	
	3077-6027	SP MIXES SP-C SAC-A PG70-28	TON	40,288.000		40,288.000	
	3077-6075	TACK COAT	GAL	70,063.000		70,063.000	
	6001-6002	PORTABLE CHANGEABLE MESSAGE SIGN	EA	2.000		2.000	
	6185-6002	TMA (STATIONARY)	DAY	98.000		98.000	
	7012-6001	CURB INLET SEDIMENT PROTECTION	LF	1,445.000		1,445.000	
08		CONTRACTOR FORCE ACCOUNT EROSION CONTROL MAINTENANCE (NON-PARTICIPATING)	LS	1.000		1.000	
		CONTRACTOR FORCE ACCOUNT LAW ENFORCEMENT (NON-PARTICIPATING)	LS	1.000		1.000	
		CONTRACTOR FORCE ACCOUNT SAFETY CONTINGENCY (NON-PARTICIPATING)	LS	1.000		1.000	
		CONTRACTOR FORCE ACCOUNT RAILROAD FLAGGING (NON-PARTICIPATING)	LS	1.000		1.000	

1 DSS
2/22/2024





DISTRICT	COUNTY	CCSJ	SHEET
Fort Worth	Tarrant	0172-06-099	10B

Ck: DW: Ck: DW:

SUMMARY OF REMOVAL ITEMS																
LOCATION	104 6009	104 6011	104 6021	104 6054	105 6013	354 6013	354 6021	354 6045	512 6058	542 6001	542 6002	542 6003	542 6004	544 6003	550 6003	752 6003
	REMOVING CONC (RIPRAP)	REMOVING CONC (MEDIANS)	REMOVING CONC (CURB)	REMOVING CONCRETE (MOW STRIP)	REMOVING STAB BASE & ASPH PAV (9")	PLAN & TEXT CONC PAV(0" TO 1/2")	PLANE ASPH CONC PAV(0" TO 2")	PLANE ASPH CONC PAV (2")	PORT CTB (REMOVE)(LOW PROF)(TY 2)	REMOVE METAL BEAM GUARD FENCE	REMOVE TERMINAL ANCHOR SECTION	REMOVE DOWNSTRE AM ANCHOR TERMINAL	RM MTL BM GD FENCE TRANS (THRIEBEAM)	GUARDRAIL END TREATMENT (REMOVE)	CHAIN LINK FENCE (REMOVE)	TREE * TRIMMING / BRUSH REMOVAL
	SY	SY	LF	LF	SY	SY	SY	SY	LF	LF	EA	EA	EA	EA	LF	MI
US 287																
SHEET 1 OF 23				325.0			243	9193		2837.5	1	1	3	2		
SHEET 2 OF 23				82.0			1645	18118		1194.5				2	85	
SHEET 3 OF 23				118.0			1596	17875		2005.5	4			1		
SHEET 4 OF 23			269				1599	17379		1500.0	4			2		
SHEET 5 OF 23	153		240	200.0			1617	18240		1437.5			1	2		
SHEET 6 OF 23		93	23	125.0				15031		400.0		2				
SHEET 7 OF 23				162.5		1650	1650	15029		512.5			1			
SHEET 8 OF 23								18455		550.0	1			1		
SHEET 9 OF 23			95			6330	6330	9002		312.5	1			1		
SHEET 10 OF 23				225.0	78			18650		362.5	1	1		2		
SHEET 11 OF 23	377		570			2609	2609	15355		1587.5	1	1				
SHEET 12 OF 23				425.0				17910		2012.5	2	2		2		
SHEET 13 OF 23						1924	1924	15177		650.0	1					
SHEET 14 OF 23			80			6503	6503	8200		1812.5						
SHEET 15 OF 23				187.5				18582		500.0		1		1	1180	
SHEET 16 OF 23			100	325.0				16144		900.0	4	2		2	1200	
SHEET 17 OF 23								15734		162.5	1			1	1200	
SHEET 18 OF 23				362.5				17797		362.5		2		2	1200	
SHEET 19 OF 23			30			1528	1528	15535		300.0					1050	
SHEET 20 OF 23			35			2590	2590	14518		300.0						
SHEET 21 OF 23				350.0				16913	240	950.0	5	2		1		
SHEET 22 OF 23								18296		450.0	6					
SHEET 23 OF 23								3178								
PROJECT TOTALS	530	93	1442	2887.5	78	23134	29834	350311	240	21100	32	14	5	24	5915	4.934

* TREE TRIMMING WILL BE DIRECTED IN FIELD BY ENGINEER.

SUMMARY OF TRAFFIC CONTROL PLAN ITEMS																			
LOCATION	502 6001	512 6001	512 6025	512 6049	545 6003	545 6005	545 6019	545 6010	662 6012	662 6014	662 6005	662 6008	662 6037	730 6107	731 6007	734 6002	738 6010	6001 6002	6185 6002
	BARRICADES SIGNS AND TRAFFIC HANDLING	PORT CTB (FUR & INST)(SGL SLOPE)(TY 1)	PORT CTB (MOVE)(SGL SLP)(TY 1)	PORT CTB (REMOVE)(SGL SLP)(TY 1)	CRASH CUSH ATTEN (MOVE & RESET)	CRASH CUSH ATTEN (REMOVE)	CRASH CUSH ATTEN (INSTL)(X N)(TL3)	CRASH CUSH ATTEN (INSTL)(X W)(TL3)	WK ZN PAV MRK NONREMOV (W)8"(SLD)	WK ZN PAV MRK NONREMOV (W)12"(SLD)	WK ZN PAV MRK NONREMOV (W)6"(BRK)	WK ZN PAV MRK NONREMOV (W)6"(SLD)	WK ZN PAV MRK NONREMOV (Y)6"(SLD)	FULL WIDTH MOWING	PAVEMENT EDGES, STRUCTURES & FIXTURES	LITTER REMOVAL	CLEANING / SWEEPING (SPOT)	PORTABLE CHANGEABLE MESSAGE SIGN	TMA (STATIONARY)
	MO	LF	LF	LF	EA	EA	EA	EA	LF	LF	LF	LF	LF	CYC	MI	CYC	MI	EA	DAY
US 287																			
SHEET 1 OF 23		1144	984		2	3	2	1	387	300	648	1271	1302						
SHEET 2 OF 23		476	735		1		1		501	659	1200	3158	3117						
SHEET 3 OF 23			111		1	1			670	414	1202	3171	3172						
SHEET 4 OF 23			260				1		575	156	1201	3281	3282						
SHEET 5 OF 23			460		1	1			807	913	1200	2709	2707						
SHEET 6 OF 23			570		2	1			276		1200	3469	3474						
SHEET 7 OF 23		630	450		1	1	2		412	136	1201	2602	2600						
SHEET 8 OF 23									856	177	1201	2998	2995						
SHEET 9 OF 23											1200	2541	2568						
SHEET 10 OF 23			682		2				698	159	1200	3148	3138						
SHEET 11 OF 23		540	128				2		440	50	1200	3586	3479						
SHEET 12 OF 23			600		2	1			1358	803	1200	2496	2497						
SHEET 13 OF 23		852					1		72		1200	3146	3405						
SHEET 14 OF 23		2400									1200	2402	2401						
SHEET 15 OF 23		528	171				1		1167	172	1200	3374	3376						
SHEET 16 OF 23			969		4	3			148		1200	2400	2400						
SHEET 17 OF 23											1200	2400	2400						
SHEET 18 OF 23			780		2	1			944	470	1200	2504	2503						
SHEET 19 OF 23		838					1		26		1200	3123	3123						
SHEET 20 OF 23		992					1		293	34	1200	3012	3016						
SHEET 21 OF 23			480		1	1			646	424	1200	2405	2401						
SHEET 22 OF 23			450		1				1170	150	1200	2733	2741						
SHEET 23 OF 23											200	634	635						
PROJECT TOTALS	7	8400	7830	8400	20	13	12	1	11446	5017	26053	62563	62732	2	4.934	2	4.934	2	98

			
			
US 287			
<h2>SUMMARY OF QUANTITIES</h2>			
SHEET 2 OF 4			
CONT	SECT	JOB	HIGHWAY
0172	06	099	US 287
DIST	COUNTY		SHEET NO.
FTW	TARRANT		12

DATE: 2/22/2024 7:34:18 PM
 FILE: c:\pwwork1\020266507\US287_GEN_QTY.dgn


 DSS 2/22/2024

Ck:
 DW:
 CK:
 DW:

PHASE 1 - PLANE, FULL DEPTH PAVEMENT REPAIR, CLEAN AND SEAL BRIDGE JOINTS, OVERLAY, PAVEMENT MARKINGS

CONTRACTOR SHALL USE TCP (6-1) THROUGH TCP (6-6) STANDARDS FOR PHASE 1 OPERATIONS AND SHALL NOT CREATE DETOUR ROUTES ON CITY ROADS.

1. INSTALL SW3P DEVICES.
 - OPERATIONS SHALL BE DONE DURING NIGHTTIME.
2. PLANE THE MAINLANES ONE LANE AT A TIME AND ONE DIRECTION AT A TIME, TO THE LIMITS SHOWN ON THE PLANS. PLACE TEMPORARY WORK ZONE PAVEMENT MARKINGS.
 - OPERATIONS SHALL ONLY BE DONE DURING NIGHTTIME HOURS.
 - CONTRACTOR SHALL MAINTAIN CONTINUOUS OVERLAY OPERATIONS FROM THE TIME OF MILLING TO THE TIME OF OVERLAYING.
 - CONTRACTOR SHALL SUBMIT A PLAN FOR DAILY OPERATION LIMITS THAT ENSURES COMPLETION OF LIMITS AND REOPENING ALL LANES TO TRAFFIC DURING THE DAY. CONSTRUCTION LIMITS SHALL BE APPROVED BY THE ENGINEER.
 - LAW ENFORCEMENT SHALL BE USED TO ASSIST WITH FREEWAY AND RAMP CLOSURES.
 - PROJECT SHALL BE CLEAR OF PLANNING DEBRIS PRIOR TO REOPENING LANES TO TRAFFIC.
3. PERFORM FULL DEPTH PAVEMENT REPAIR AS DIRECTED BY ENGINEER IN THE FIELD.
 - OPERATIONS SHALL ONLY BE DONE DURING NIGHTTIME HOURS.
4. CLEAN AND SEAL BRIDGE JOINTS AS SHOWN ON THE PLANS.
 - OPERATIONS SHALL ONLY BE DONE DURING NIGHTTIME HOURS.
5. OVERLAY THE ENTIRE PROJECT ONE LANE AT A TIME AND ONE DIRECTION AT A TIME, TO THE LIMITS SHOWN ON THE PLANS. PERFORM BRIDGE PENETRATING CONCRETE SURFACE TREATMENT AND PLACE PERMANENT PAVEMENT MARKINGS.
 - OPERATIONS SHALL ONLY BE DONE DURING NIGHTTIME HOURS.
 - CONTRACTOR SHALL SUBMIT A PLAN FOR DAILY OPERATION LIMITS THAT ENSURES COMPLETION OF LIMITS AND REOPENING ALL LANES TO TRAFFIC DURING THE DAY. CONSTRUCTION LIMITS SHALL BE APPROVED BY THE ENGINEER.
 - LAW ENFORCEMENT SHALL BE USED TO ASSIST WITH FREEWAY CLOSURES.
 - PERMANENT PAVEMENT MARKINGS SHALL BE INSTALLED PRIOR TO REOPENING LANES TO TRAFFIC.

PHASE 2 - PERMANENT CONCRETE TRAFFIC RAIL

PHASE 2 IS DEPICTED IN THE TRAFFIC CONTROL PLAN LAYOUT SHEETS. PHASE 2 CAN BE CONCURRENT WITH PHASE 1 BUT SHALL NOT DISRUPT PHASE 1 OPERATIONS.

CONTRACTOR SHALL USE TCP (6-1) THROUGH TCP (6-5) STANDARDS FOR PHASE 2 OPERATIONS AND SHALL NOT CREATE DETOUR ROUTES ON CITY ROADS.

STEP 1 - INSIDE RAIL CONSTRUCTION

1. FURNISH AND INSTALL PORTABLE CTB TO CLOSE THE INSIDE SHOULDER AS SHOWN IN THE PLANS.
 - CONTRACTOR SHALL FOLLOW APPLICABLE STANDARDS FOR SIGNAGE AND ADDITIONAL INFORMATION
 - OPERATIONS SHALL ONLY BE DONE DURING NIGHTTIME HOURS.
 - UPSTREAM PORTABLE CTB TAPER SHALL BE 25:1 MINIMUM.
2. REMOVE EXISTING MBGF AND REPLACE WITH PERMANENT CONCRETE TRAFFIC RAIL AS SHOWN IN THE PLANS.
 - OPERATIONS SHALL ONLY BE DONE DURING NIGHTTIME HOURS.
 - CONTRACTOR SHALL PLACE CHANNELIZING DEVICES AS SHOWN IN THE PLANS TO CLOSE THE INSIDE LANE DURING NIGHTTIME HOURS, WHEN WORKERS ARE PRESENT. CONTRACTOR MUST MAINTAIN AT LEAST TWO MAINLANES AT ALL TIMES. SEE STANDARDS FOR ADDITIONAL SIGNAGE AND TCP DEVICES.

STEP 2 - OUTSIDE RAIL CONSTRUCTION

STEP 2A CONTRACTOR SHALL CONSTRUCT OUTSIDE SOUTHBOUND RAIL FIRST

STEP 2B CONTRACTOR SHALL CONSTRUCT OUTSIDE NORTHBOUND RAIL

1. MOVE PORTABLE CTB FROM STEP 1 TO CLOSE THE OUTSIDE SHOULDER AS SHOWN IN THE PLANS. REMOVE EXCESS PORTABLE CTB FROM STEP 1.
 - CONTRACTOR SHALL FOLLOW APPLICABLE STANDARDS FOR SIGNAGE AND ADDITIONAL INFORMATION
 - OPERATIONS SHALL ONLY BE DONE DURING NIGHTTIME HOURS.
 - UPSTREAM PORTABLE CTB TAPER SHALL BE 25:1 MINIMUM.
2. REMOVE EXISTING MBGF AND REPLACE WITH PERMANENT CONCRETE TRAFFIC RAIL AS SHOWN IN THE PLANS.
 - OPERATIONS SHALL ONLY BE DONE DURING NIGHTTIME HOURS.
 - CONTRACTOR SHALL PLACE CHANNELIZING DEVICES AS SHOWN IN THE PLANS TO CLOSE THE OUTSIDE LANE DURING NIGHTTIME HOURS, WHEN WORKERS ARE PRESENT. CONTRACTOR MUST MAINTAIN AT LEAST TWO MAINLANES AT ALL TIMES. SEE STANDARDS FOR ADDITIONAL SIGNAGE AND TCP DEVICES.

PHASE 3 - PROPOSED METAL BEAM GUARD FENCE (MBGF), MOW STRIP, RIP RAP, CURB REPLACEMENT, CLEANING DRAINAGE INLETS, SMALL SIGNS, TREE TRIMMING, AND VARIOUS MAINTENANCE

CONTRACTOR SHALL USE TCP (5-1) STANDARDS FOR PHASE 3 OPERATIONS.

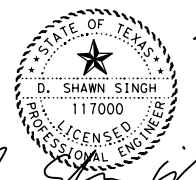
1. CONTRACTOR SHALL INSTALL MBGF, MOW STRIP, RIP RAP, CURB AND GUTTER, SMALL SIGNS, AND SHALL CLEAN EXISTING DRAINAGE INLETS, PERFORM TREE TRIMMING, AND OTHER VARIOUS MAINTENANCE AS SHOWN IN THE PLANS AND AS DIRECTED BY THE ENGINEER.
 - OPERATIONS SHALL BE DONE DURING NIGHTTIME.
 - CONTRACTOR SHALL NOT CLOSE ANY LANES DURING THE DAY.
 - ALL DAMAGED CURB AND GUTTER ALONG FRONTAGE ROADS SHALL BE REPLACED. LENGTHS AND LOCATIONS SHOWN IN PLANS ARE APPROXIMATE.

FINAL CLEAN UP


1. REMOVE SW3P DEVICES
2. REMOVE BARRICADES, PROJECT LIMIT, AND ADVANCE WARNING SIGNS
3. FINAL CLEAN UP

TMA SUMMARY PER PHASE	
PHASE NUMBER	MAXIMUM TMA'S PER PHASE
PHASE 1	3
PHASE 2 STEP 1	3
PHASE 2 STEP 2	3
PHASE 3	4

DATE: 2/22/2024 7:37:07 PM
 FILE: c:\pwwork1\0266512\US287 TCP_NAR.dgn



NO.	DATE	REVISION	BY




© 2024
 Texas Department of Transportation
 US 287

TCP NARRATIVE

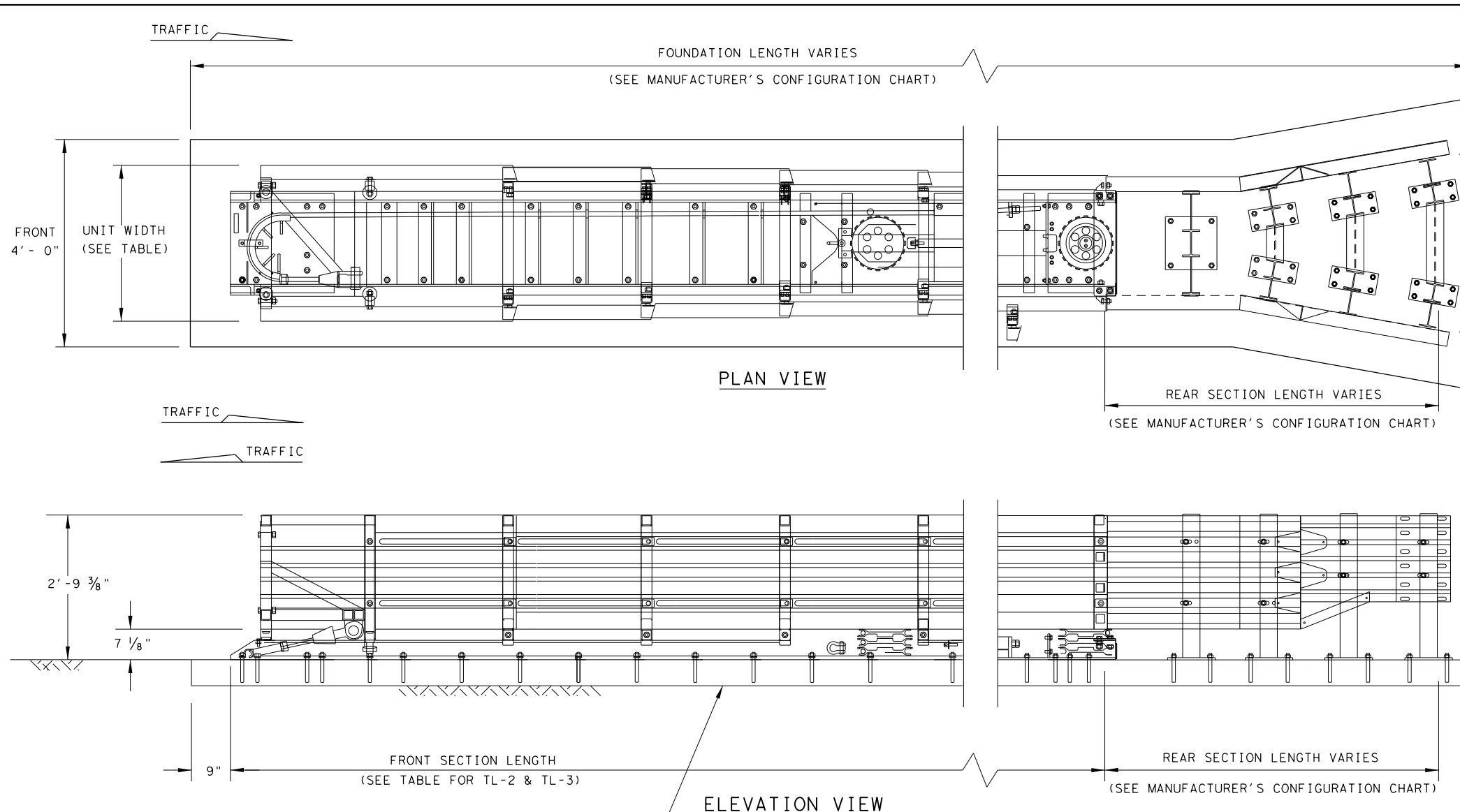
SHEET 2 OF 2

CONT	SECT	JOB	HIGHWAY
0172	06	099	US 287
DIST	COUNTY	SHEET NO.	
FTW	TARRANT	27	


DSS
 2/22/2024

DISCLAIMER:
The use of this standard is governed by the "Texas Engineering Practice Act". No warranty of any kind is made by TxDOT for any purpose whatsoever. TxDOT assumes no responsibility for the conversion of this standard to other formats or for incorrect results or damages resulting from its use.

DATE: 2/22/2024
FILE: c:\pw\khl\d0324228\smtcw16.dgn



GENERAL NOTES

- FOR SPECIFIC INFORMATION REGARDING INSTALLATION AND TECHNICAL GUIDANCE OF THE SYSTEM, CONTACT: WORK AREA PROTECTION, CORP. AT (800) 327-4417, OR (630) 377-9100.
- FOR BI-DIRECTIONAL TRAFFIC, APPROPRIATE TRANSITION PANELS WILL BE REQUIRED.
- ADDITIONAL DETAILS FOR THE TRANSITION OPTIONS AND FOUNDATION OPTIONS WILL BE SHOWN ON THE MANUFACTURER'S SHOP DRAWINGS FURNISHED TO THE ENGINEER.
- CONCRETE SHALL BE CLASS "S" WITH A MINIMUM COMPRESSIVE STRENGTH OF 4,000 PSI.
- MAXIMUM PERMISSIBLE CROSS-SLOPE IS 8%.
- THE INSTALLATION AREA SHOULD BE FREE FROM CURBS, ELEVATED OBJECTS, OR DEPRESSIONS.
- THE SCI100GM & SC170GM SYSTEMS SHOULD BE APPROXIMATELY PARALLEL WITH THE BARRIER OR \mathcal{C} OF MERGING BARRIERS.

NOTE: FOR ATTACHMENT AND TRANSITIONS TO OTHER SHAPES, BARRIERS RAILINGS AND BI-DIRECTIONAL TRAFFIC FLOWS ARE AVAILABLE. (SEE MANUFACTURER'S PRODUCT MANUAL)

NOTE: SIDE PANELS CAN TRAVEL 30" BEYOND THE LAST TERMINAL BRACE AT THE REAR OF THE CUSHION. ALL OBJECTS THAT MAY INTERFERE WITH THIS MOTION CAN AFFECT PERFORMANCE OF AND MAY CAUSE UNDUE DAMAGE TO THE CRASH CUSHION.

WIDE TRANSITION LENGTHS		
GORE WIDTH	TL-2 OVERALL SYSTEM LENGTH	TL-3 OVERALL SYSTEM LENGTH
41"	20'-1"	28'-1"
48"	21'-10"	29'-10"
55"	23'-5"	31'-5"
60"	24'-7"	32'-7"
68"	26'-6"	34'-6"
69"	26'-8"	34'-8"
81"	29'-7"	37'-7"
88"	31'-2"	39'-2"
94"	32'-7"	40'-7"
100"	34'-1"	42'-1"
107"	35'-8"	43'-8"
112"	36'-11"	44'-11"
120"	38'-10"	46'-10"
126"	40'-2"	48'-2"
133"	41'-11"	49'-11"

FOUNDATION OPTIONS
6" Reinforced Concrete (5 1/2" Anchor Embedment)
8" Unreinforced Concrete (5 1/2" Anchor Embedment)
3" Min. Asphalt over 3" Min. Concrete (16 1/2" Anchor Embed.)
6" Asphalt over 6" Compact Subbase (16 1/2" Anchor Embed.)
8" Minimum Asphalt (16 1/2" Anchor Embedment)

FOR STEEL PLACEMENT IN CONCRETE FOUNDATIONS, SEE MANUFACTURER'S PRODUCT MANUAL.

TRANSITION OPTIONS
Concrete Vertical Wall
Concrete Traffic Barriers
Guardrail (W-Beam)
Guardrail (Thrie-Beam)

TRANSITION TYPES ARE SHOWN ELSEWHERE ON THE PLANS (I.E. ATTENUATOR LOCATION DETAILS OR IN THE GENERAL NOTES).

FOR BI-DIRECTIONAL TRANSITION PANEL AND END SHOE DETAILS, SEE MANUFACTURER'S PRODUCT MANUAL.

MODEL (WIDE)	TEST LEVEL	FRONT SECTION LENGTH	UNIT WIDTH	FOUNDATION LENGTH	GORE WIDTH
SCI170GM	TL-2	13'-6"	2'-10 5/8"	OVERALL LENGTH PLUS 1'-6"	41" TO 133"
SCI100GM	TL-3	21'-6"	3'-1 1/2"	OVERALL LENGTH PLUS 1'-6"	41" TO 133"

SYSTEM AND PAD LENGTHS VARY DEPENDING ON BACKUP TYPE.

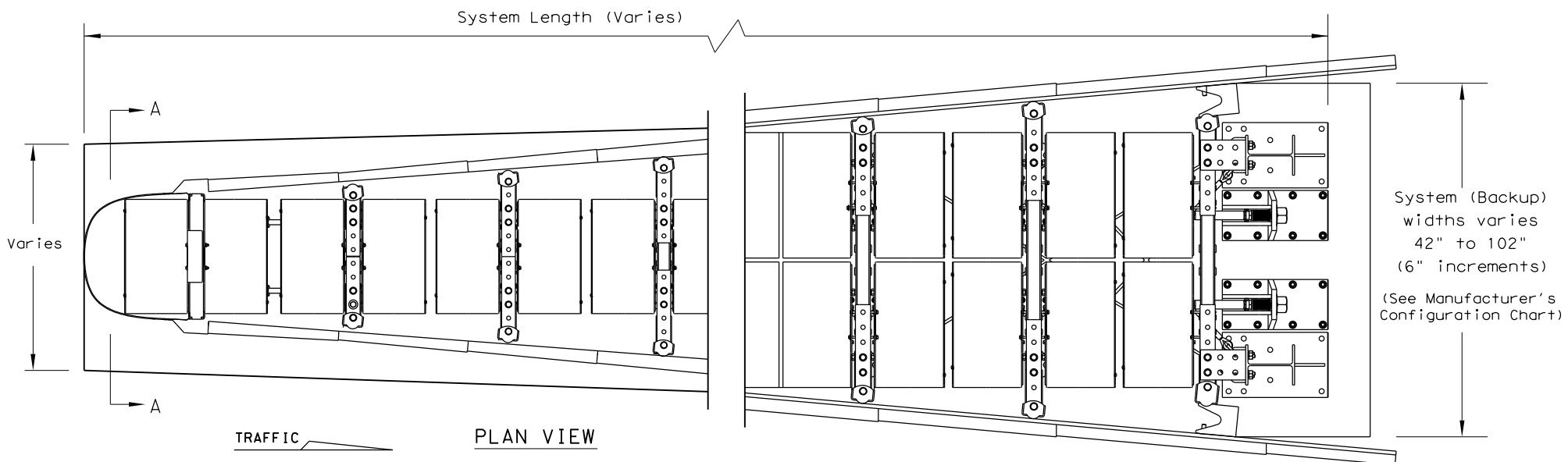
1 DSS
2/22/2024

LOW MAINTENANCE

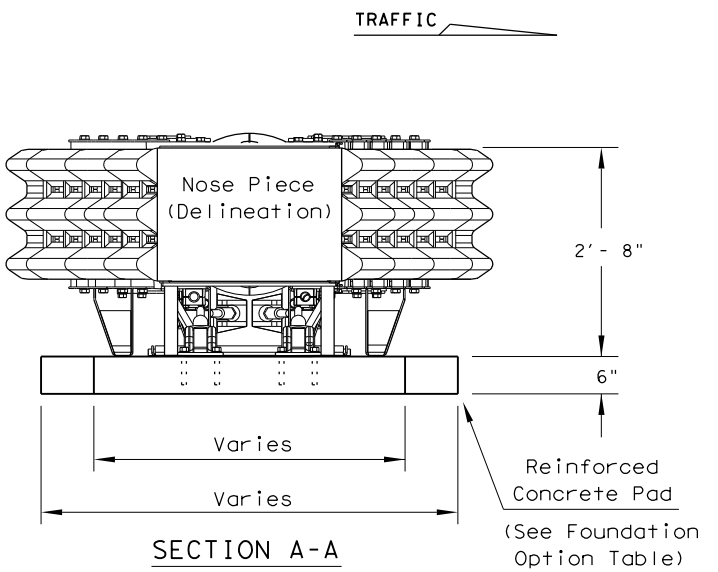
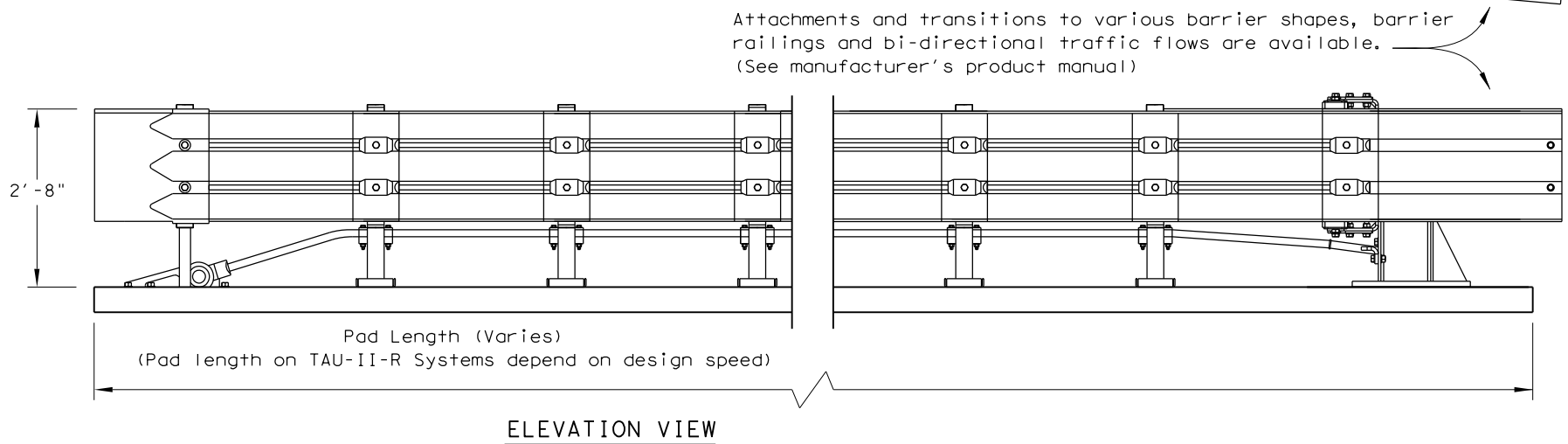
				Design Division Standard	
WORK AREA PROTECTION CORP (SMART-WIDE)					
SMTC (W) - 16					
FILE: smtcw16.dgn	DN: TxDOT	CK: KM	DN: BD/VP	CK: VP	
© TxDOT: FEBRUARY 2006	CONT	SECT	JOB	HIGHWAY	
	0172	06	099	US 287	
REVISIONS	DIST	COUNTY	SHEET NO.		
REVISED 06, 2013 VP REVISED 03, 2018 VP REVISED 04, 2018 VP	FTW	TARRANT	76A		

DISCLAIMER: The use of this standard is governed by the "Texas Engineering Practice Act". No warranty of any kind is made by TxDOT for any purpose whatsoever. TxDOT assumes no responsibility for the consequences of the use of these drawings.

DATE: 2/22/2024
 FILE: c:\pwworking\dot\0324228\tauu1r16.dgn



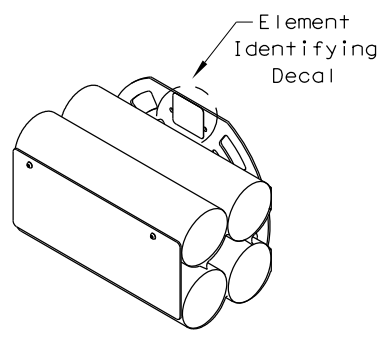
- ### GENERAL NOTES
- For specific information regarding installation and technical guidance of the system, contact: Lindsay Transportation Solutions - Barrier Systems, Inc. at (707) 374-6800, 180 River Road, Rio Vista, CA 94571
 - For bi-directional traffic, appropriate transition panels will be required.
 - Additional details for the backup support option, transition option and foundation option will be shown on the manufacturer's shop drawings furnished to the Engineer.
 - Concrete shall be class "S" with a minimum compressive strength of 4,000 psi
 - Maximum permissible cross-slope is 8%.
 - The installation area should be free from curbs, elevated objects, or ground depressions.
 - The TAU-II-R system should be installed approximately parallel with the barrier or center of merging barriers.
 - Refer to Universal TAU-II-R configuration chart for system configuration numbers and location of each type of energy absorbing element.



Nose Piece delineation orientation, is shown elsewhere on the plans.

TAU-II-R (WIDE) SYSTEM LENGTHS			
SYSTEM WIDTH	TL-2	TL-3	70 mph
42"	15'-4"	29'-5"	32'-3"
48"	15'-4"	29'-5"	32'-3"
54"	15'-4"	29'-5"	32'-3"
60"	12'-5"	29'-5"	32'-3"
66"	12'-5"	26'-7"	29'-5"
72"	12'-5"	26'-7"	26'-7"
78"	12'-5"	26'-7"	26'-7"
84"	12'-5"	26'-7"	26'-7"
90"	12'-5"	26'-7"	26'-7"
96"	12'-5"	26'-7"	26'-7"
102"			26'-7"

Note: System Lengths are +/-2"



ENERGY ABSORBING ELEMENTS (EAE)

BILL OF MATERIAL		
PRODUCT CODE	QTY	DESCRIPTION
B030704	1	Front Support
B030703	TBD	Mid Support
TBD	TBD	XL Bulkhead
TBD	TBD	XXL Bulkhead
TBD	TBD	XXXL Bulkhead
TBD	1	Backstop Assembly (See Table)
TBD	2	Front Cable Anchor
TBD	1	Nose Assembly
B010202	TBD	Sliding Panel
B010659	2	End Panel
K001003	1	Slider Assembly Kit
BSI-1202006-KT	TBD	TAU-II-R Slider Kit
BSI-1107131-KT	TBD	TAU-II-R EAE Mounting Hw Kit
BSI-1012069-00	TBD	Energy Absorbing Element, Type 1
BSI-1012070-00	TBD	Energy Absorbing Element, Type 2
BSI-1012071-00	TBD	Energy Absorbing Element, Type 3
BSI-1109042-00	TBD	Energy Absorbing Element, Type 1S
BSI-1107116-00	TBD	Energy Absorbing Element, Type 2S
BSI-1110009-00	TBD	Energy Absorbing Element, Type 3N
TBD	TBD	Cable Assembly
K001031	TBD	Lateral Support Kit
K001004	TBD	Cable Guide Kit
K001005	2	Front Support Leg Kit
TBD	1	Anchoring Package

(TBD) = To Be Determined, depending on Backup Type and System Length.
 (See manufacturer's product manual for details)

BACKUP SUPPORT OPTIONS
Wide Flange (Stand alone)

Backup and Transition types are shown elsewhere on the plans, (i.e. Attenuator location details or in the general notes).

FOUNDATION OPTIONS
6" Reinforced Concrete
8" Unreinforced Concrete
Asphalt over Concrete with Minimum 6" Embedment in Concrete

For steel placement in concrete foundations. (See manufacturer's product manual)

TRANSITION OPTIONS
Vertical Wall
Concrete Traffic Barriers
W-Beam Guardrail
Thrie Beam Guardrail

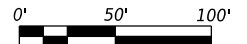
For bi-directional transition panel and end shoe details. (See manufacturer's product manual)

1 DSS
2/22/2024

LOW MAINTENANCE

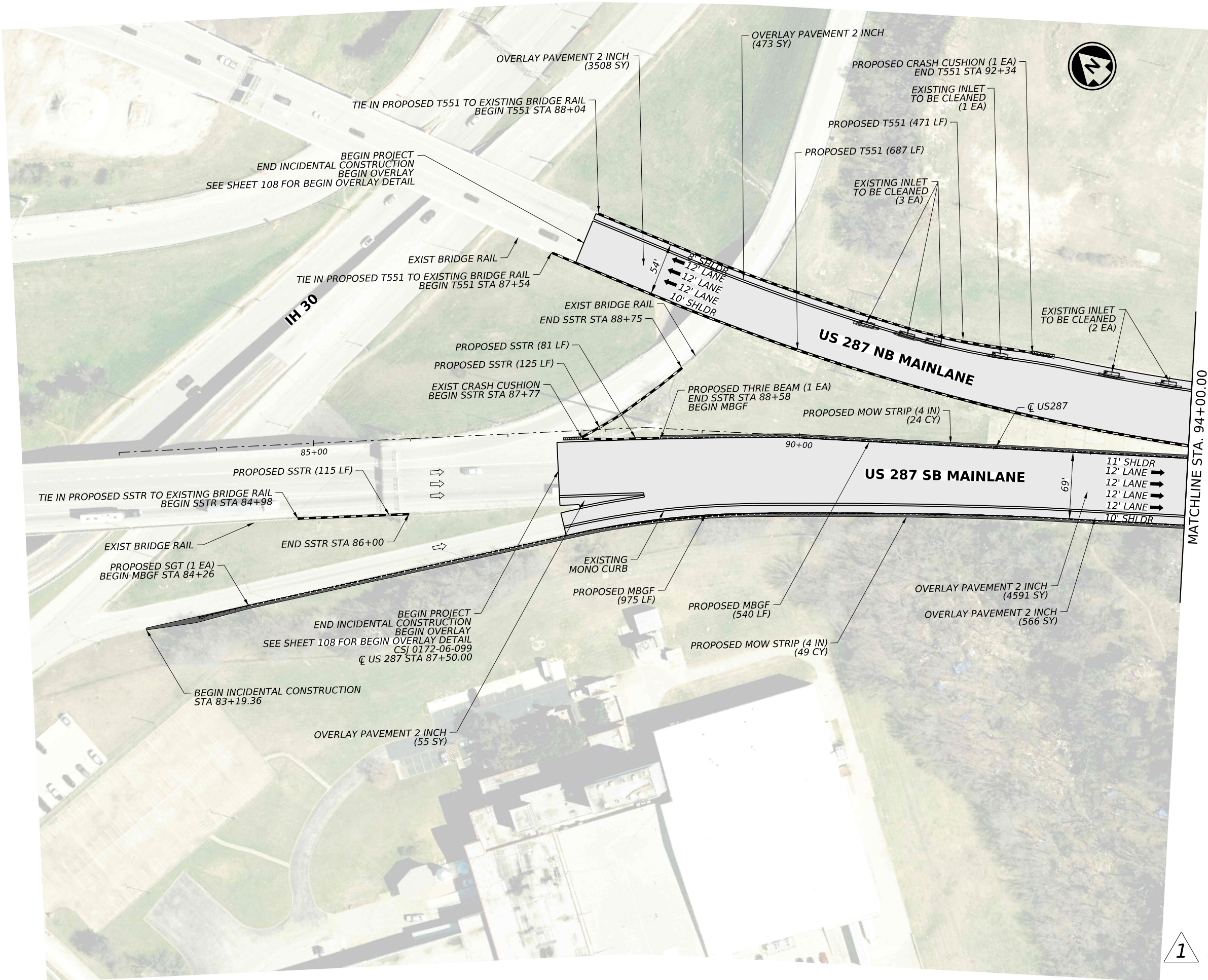
		Design Division Standard	
LTS-BARRIER SYSTEMS CRASH CUSHION (R-WIDE) TAU-II-R (W) - 16			
FILE: tau1r16.dgn	DN: TxDOT	CK: KM	DW: VP
©TxDOT: January 2013	CONT	SECT	JOB
REVISIONS	0172	06	099
REVISD 06,2013 (VP)	DIST	COUNTY	SHEET NO.
REVISD 02,2016 (VP)	FTW	TARRANT	76B

CK: DW: CK: DW:



- LEGEND**
- LIMITS OF 2 INCH OVERLAY
 - LIMITS OF PENETRATING CONCRETE SURFACE TREATMENT
 - PROPOSED MOW STRIP CONCRETE RIPRAP
 - PROPOSED CONCRETE RIPRAP
 - PROPOSED RAP BACKFILL
 - EXIST CURB INLET TO BE CLEANED
 - EXIST DROP GRATE INLET TO BE CLEANED
 - DIRECTION OF TRAFFIC

- NOTES:**
1. ALL DAMAGED CURB ON FRONTAGE ROAD SHALL BE REPLACED AS SHOWN IN PLANS AND AS DIRECTED BY ENGINEER.
 2. CONTRACTOR SHALL NOT APPLY ANY OVERLAY AT BRIDGE DECKS.
 3. ALL STATIONS AND OFFSETS ARE BASED ON C US 287 UNLESS SHOWN OTHERWISE.
 4. SEE MISCELLANEOUS ROADWAY DETAILS FOR ADDITIONAL INFORMATION.
 5. OVERLAY ALL RAMPS TO THE END OF STRIPED GORE.
 6. SEE SHEETS 113-117 FOR INFORMATION ON CLEANING AND RESEALING JOINTS.



MATCHLINE STA. 94+00.00

DATE: 2/22/2024 7:32:35 PM
 FILE: c:\p\kh1\02026651\US287_RDW.dgn

NO.	DATE	REVISION	BY

2024
 Texas Department of Transportation
 US 287

ROADWAY PLAN

BEGIN TO STA 94+00

SHEET 1 OF 23

COUNT	SECT	JOB	HIGHWAY
0172	06	099	US 287
DIST	COUNTY	SHEET NO.	
FTW	TARRANT	79	

1 DSS 2/22/2024