

SUBJECT: PLANS AND PROPOSAL ADDENDUMS

PROJECT: F 2022(811)

CONTROL: 0522-04-032

COUNTY: SMITH

LETTING: 08/03/2022

REFERENCE NO: 0727

**PROPOSAL ADDENDUMS**

- 
- \_\_\_ PROPOSAL COVER
- X BID INSERTS (SH. NO.: 2-21 THRU 21-21 )
- \_\_\_ GENERAL NOTES (SH. NO.: )
- X SPEC LIST (SH. NO.: REVISED 000-1261 )
- X SPECIAL PROVISIONS: )
  - ADDED: 000-1261
  - DELETED:
- \_\_\_ SPECIAL SPECIFICATIONS:
  - ADDED:
  - DELETED:
- X OTHER: PLAN SHEETS 2, 15, 15A-15F, 22, 33, 36A, 36B, 200B

DESCRIPTION OF ABOVE CHANGES  
(INCLUDING PLANS SHEET CHANGES)

PROPOSAL

-----  
REVISED SPECIAL PROVISION 000-1261.

BID INSERTS

-----  
REVISED QUANTITY FOR THE FOLLOWING BID ITEM:

164-6001

ADDED THE FOLLOWING BID ITEMS:

164-6054, 164-6055, 164-6056, 662-6057, 662-6059

DELETED THE FOLLOWING BID ITEMS:

164-6009, 164-6011, 662-6056, 662-6058

PLAN SHEET 2

-----  
DESCRIPTION OF ABOVE CHANGES  
(INCLUDING PLANS SHEET CHANGES)

(CONTINUED)

ADDED PLAN SHEET 200B

PLAN SHEETS 15, 15A - 15F (E&Q SHEETS)

-----  
SEE CHANGES AS DESCRIBED UNDER BID INSERTS.

PLAN SHEET 22

-----  
ADDED PLAN SHEET 200B.

PLAN SHEET 33

-----  
REVISED TCP NARRATIVE.

PLAN SHEETS 36A & 36B

-----  
REVISED TCP LAYOUTS.

PLAN SHEET 200B

-----  
ADDED MISC DETAILS SHEET.





# Estimate & Quantity Sheet

CONTROLLING PROJECT ID 0522-04-032

DISTRICT Tyler  
HIGHWAY FM 16

COUNTY Smith

CONTROL SECTION JOB				0522-04-032		TOTAL EST.	TOTAL FINAL
PROJECT ID				A00032122			
COUNTY				Smith			
HIGHWAY				FM 16			
ALT	BID CODE	DESCRIPTION	UNIT	EST.	FINAL		
	100-6002	PREPARING ROW	STA	233.000		233.000	
	104-6022	REMOVING CONC (CURB AND GUTTER)	LF	2,013.000		2,013.000	
	104-6054	REMOVING CONCRETE(MOW STRIP)	LF	400.000		400.000	
	105-6002	REMOVING STAB BASE AND ASPH PAV (2")	SY	7,770.000		7,770.000	
	105-6023	REMOVING STAB BASE AND ASPH PAV (5")	SY	6,792.000		6,792.000	
	105-6030	REMOVING STAB BASE & ASPH PAV (8"-14")	SY	37,486.000		37,486.000	
	105-6054	REMOVING STAB BASE & ASPH PAV (18")	SY	41,715.000		41,715.000	
	110-6001	EXCAVATION (ROADWAY)	CY	346,053.000		346,053.000	
	132-6006	EMBANKMENT (FINAL)(DENS CONT)(TY C)	CY	142,031.000		142,031.000	
	152-6001	ROAD GRADER WORK (ORD COMP)	STA	220.000		220.000	
	160-6003	FURNISHING AND PLACING TOPSOIL (4")	SY	241,592.000		241,592.000	
⚠	164-6001	BROADCAST SEED (PERM) (RURAL) (SANDY)	SY	146,718.000		146,718.000	
⚠	164-6054	BOND FBR MTRX SEED (PERM)(RURAL)(SAND)	SY	241,592.000		241,592.000	
⚠	164-6055	BONDED FBR MTRX SEED (TEMP)(WARM)	SY	146,718.000		146,718.000	
	164-6056	BONDED FBR MTRX SEED (TEMP)(COOL)	SY	146,718.000		146,718.000	
	168-6001	VEGETATIVE WATERING	MG	2,658.000		2,658.000	
	247-6233	FL BS (CMP IN PLACE)(TY A GR 1-2)(12")	SY	136,590.000		136,590.000	
	260-6004	LIME (QUICKLIME (DRY))	TON	1,389.000		1,389.000	
	260-6073	LIME TRT (SUBGRADE)(8")	SY	77,167.000		77,167.000	
	275-6001	CEMENT	TON	1,389.000		1,389.000	
	275-6006	CEMENT TREAT (EXIST MATL) (10")	SY	17,882.000		17,882.000	
	275-6010	CEMENT TREAT (SUBGRADE) (8")	SY	77,167.000		77,167.000	
	310-6027	PRIME COAT(MC-30 OR AE-P)	GAL	28,909.000		28,909.000	
	316-6406	ASPH (AC-20XP, AC-10-2TR, OR AC-20-5TR)	GAL	119,149.000		119,149.000	
	316-6407	AGGR (TY-PD GR-3 OR TY-PL GR-3)	CY	2,837.000		2,837.000	
	400-6005	CEM STABIL BKFL	CY	989.000		989.000	
	400-6008	CUT & RESTORE ASPH PAVING	SY	1,875.000		1,875.000	
	403-6001	TEMPORARY SPL SHORING	SF	4,621.000		4,621.000	
	416-6004	DRILL SHAFT (36 IN)	LF	5,310.000		5,310.000	
	416-6005	DRILL SHAFT (42 IN)	LF	798.000		798.000	
	416-6006	DRILL SHAFT (48 IN)	LF	540.000		540.000	
	416-6007	DRILL SHAFT (54 IN)	LF	504.000		504.000	
	416-6018	DRILL SHAFT (SIGN MTS) (24 IN)	LF	24.000		24.000	
	416-6019	DRILL SHAFT (SIGN MTS) (30 IN)	LF	22.600		22.600	
	416-6032	DRILL SHAFT (TRF SIG POLE) (36 IN)	LF	13.000		13.000	
	416-6034	DRILL SHAFT (TRF SIG POLE) (48 IN)	LF	22.000		22.000	
	420-6013	CL C CONC (ABUT)	CY	236.200		236.200	



REVISED 7/22/2022

DISTRICT	COUNTY	CCSJ	SHEET
Tyler	Smith	0522-04-032	15



# Estimate & Quantity Sheet

CONTROLLING PROJECT ID 0522-04-032

DISTRICT Tyler  
HIGHWAY FM 16

COUNTY Smith

CONTROL SECTION JOB				0522-04-032		TOTAL EST.	TOTAL FINAL
PROJECT ID				A00032122			
COUNTY				Smith			
HIGHWAY				FM 16			
ALT	BID CODE	DESCRIPTION	UNIT	EST.	FINAL		
	420-6019	CL C CONC (ABUT)(EXTEND)	CY	126.800		126.800	
	420-6025	CL C CONC (BENT)	CY	233.400		233.400	
	420-6029	CL C CONC (CAP)	CY	317.850		317.850	
	420-6037	CL C CONC (COLUMN)	CY	478.500		478.500	
	420-6071	CL C CONC (COLLAR)	EA	2.000		2.000	
	422-6001	REINF CONC SLAB	SF	88,340.000		88,340.000	
	422-6003	REINF CONC SLAB (EXTEND SLAB)	SF	16,420.000		16,420.000	
	422-6015	APPROACH SLAB	CY	342.500		342.500	
	422-6035	APPROACH SLAB (EXTEND)	CY	199.200		199.200	
	423-6003	RETAINING WALL (TEMP WALL)	SF	3,356.000		3,356.000	
	425-6035	PRESTR CONC GIRDER (TX28)	LF	3,860.000		3,860.000	
	425-6038	PRESTR CONC GIRDER (TX46)	LF	8,758.000		8,758.000	
	432-6002	RIPRAP (CONC)(5 IN)	CY	63.000		63.000	
	432-6003	RIPRAP (CONC)(6 IN)	CY	12.000		12.000	
	432-6016	RIPRAP (STONE TY R)(DRY)(12 IN)	CY	308.000		308.000	
	432-6033	RIPRAP (STONE PROTECTION)(18 IN)	CY	1,484.000		1,484.000	
	432-6035	RIPRAP (STONE PROTECTION)(24 IN)	CY	694.000		694.000	
	432-6045	RIPRAP (MOW STRIP)(4 IN)	CY	249.000		249.000	
	450-6006	RAIL (TY T223)	LF	908.000		908.000	
	450-6030	RAIL (TY C221)	LF	1,648.000		1,648.000	
	450-6104	RAIL (TY PR22)	LF	1,600.000		1,600.000	
	454-6004	ARMOR JOINT (SEALED)	LF	480.000		480.000	
	454-6018	SEALED EXPANSION JOINT (4 IN) (SEJ - M)	LF	360.000		360.000	
	460-6003	CMP (GAL STL 24 IN)	LF	50.000		50.000	
	462-6003	CONC BOX CULV (4 FT X 2 FT)	LF	101.000		101.000	
	462-6004	CONC BOX CULV (4 FT X 3 FT)	LF	140.000		140.000	
	462-6007	CONC BOX CULV (5 FT X 3 FT)	LF	517.000		517.000	
	462-6011	CONC BOX CULV (6 FT X 4 FT)	LF	157.000		157.000	
	464-6003	RC PIPE (CL III)(18 IN)	LF	2,836.000		2,836.000	
	464-6005	RC PIPE (CL III)(24 IN)	LF	2,989.000		2,989.000	
	464-6007	RC PIPE (CL III)(30 IN)	LF	682.000		682.000	
	464-6008	RC PIPE (CL III)(36 IN)	LF	469.000		469.000	
	464-6009	RC PIPE (CL III)(42 IN)	LF	108.000		108.000	
	464-6010	RC PIPE (CL III)(48 IN)	LF	135.000		135.000	
	464-6036	RC PIPE (ELLIP)(CL III)(DES 1)	LF	72.000		72.000	
	465-6004	MANH (COMPL)(PRM)(72IN)	EA	6.000		6.000	
	465-6006	JCTBOX(COMPL)(PJB)(4FTX4FT)	EA	5.000		5.000	



REVISED 7/22/2022

DISTRICT	COUNTY	CCSJ	SHEET
Tyler	Smith	0522-04-032	15A



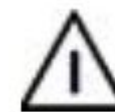
# Estimate & Quantity Sheet

CONTROLLING PROJECT ID 0522-04-032

DISTRICT Tyler  
HIGHWAY FM 16

COUNTY Smith

CONTROL SECTION JOB				0522-04-032		TOTAL EST.	TOTAL FINAL
PROJECT ID				A00032122			
COUNTY				Smith			
HIGHWAY				FM 16			
ALT	BID CODE	DESCRIPTION	UNIT	EST.	FINAL		
	465-6011	JCTBOX(COMPL)(PJB)(6FTX6FT)	EA	1.000		1.000	
	465-6012	JCTBOX(COMPL)(PJB)(8FTX8FT)	EA	1.000		1.000	
	465-6013	INLET (COMPL)(PCO)(3FT)(NONE)	EA	2.000		2.000	
	465-6015	INLET (COMPL)(PCO)(3FT)(RIGHT)	EA	1.000		1.000	
	465-6016	INLET (COMPL)(PCO)(3FT)(BOTH)	EA	5.000		5.000	
	465-6021	INLET (COMPL)(PCO)(5FT)(NONE)	EA	2.000		2.000	
	465-6022	INLET (COMPL)(PCO)(5FT)(LEFT)	EA	1.000		1.000	
	465-6023	INLET (COMPL)(PCO)(5FT)(RIGHT)	EA	1.000		1.000	
	465-6024	INLET (COMPL)(PCO)(5FT)(BOTH)	EA	8.000		8.000	
	465-6026	INLET (COMPL)(PCO)(6FT)(LEFT)	EA	1.000		1.000	
	465-6028	INLET (COMPL)(PCO)(6FT)(BOTH)	EA	5.000		5.000	
	465-6147	INLET(COMPL)(PSL)(SFG)(4FTX4FT-4FTX4FT)	EA	2.000		2.000	
	465-6153	INLET (COMPL)(PAZD)(RC)(4FTX4FT)	EA	1.000		1.000	
	465-6154	INLET (COMPL)(PAZD)(RC)(5FTX5FT)	EA	1.000		1.000	
	465-6175	INLET (COMPL)(CURB)(TY C)	EA	9.000		9.000	
	465-6259	INLET (COMPL)(EXT TY C)	EA	3.000		3.000	
	466-6005	HEADWALL (CH - FW - 0) (DIA= 24 IN)	EA	2.000		2.000	
	466-6009	HEADWALL (CH - FW - 0) (DIA= 36 IN)	EA	4.000		4.000	
	466-6025	HEADWALL (CH - FW - 15) (DIA= 42 IN)	EA	2.000		2.000	
	466-6041	HEADWALL (CH - FW - 30) (DIA= 48 IN)	EA	2.000		2.000	
	466-6165	WINGWALL (FW - S) (HW=4 FT)	EA	4.000		4.000	
	466-6166	WINGWALL (FW - S) (HW=5 FT)	EA	2.000		2.000	
	467-6008	SET (TY I) (30 IN) (3: 1) (C)	EA	4.000		4.000	
	467-6363	SET (TY II) (18 IN) (RCP) (6: 1) (P)	EA	72.000		72.000	
	467-6390	SET (TY II) (24 IN) (RCP) (4: 1) (C)	EA	11.000		11.000	
	467-6395	SET (TY II) (24 IN) (RCP) (6: 1) (P)	EA	18.000		18.000	
	467-6417	SET (TY II) (30 IN) (RCP) (3: 1) (C)	EA	6.000		6.000	
	467-6419	SET (TY II) (30 IN) (RCP) (4: 1) (C)	EA	7.000		7.000	
	467-6454	SET (TY II) (36 IN) (RCP) (6: 1) (P)	EA	4.000		4.000	
	496-6002	REMOV STR (INLET)	EA	8.000		8.000	
	496-6003	REMOV STR (MANHOLE)	EA	1.000		1.000	
	496-6004	REMOV STR (SET)	EA	5.000		5.000	
	496-6006	REMOV STR (HEADWALL)	EA	38.000		38.000	
	496-6007	REMOV STR (PIPE)	LF	2,506.000		2,506.000	
	496-6008	REMOV STR (BOX CULVERT)	LF	288.000		288.000	
	496-6009	REMOV STR (BRIDGE 0 - 99 FT LENGTH)	EA	1.000		1.000	
	500-6001	MOBILIZATION	LS	1.000		1.000	



REVISED 7/22/2022

DISTRICT	COUNTY	CCSJ	SHEET
Tyler	Smith	0522-04-032	15B



CONTROLLING PROJECT ID 0522-04-032

DISTRICT Tyler  
HIGHWAY FM 16

COUNTY Smith

# Estimate & Quantity Sheet

CONTROL SECTION JOB				0522-04-032		TOTAL EST.	TOTAL FINAL
PROJECT ID				A00032122			
COUNTY				Smith			
HIGHWAY				FM 16			
ALT	BID CODE	DESCRIPTION	UNIT	EST.	FINAL		
	502-6001	BARRICADES, SIGNS AND TRAFFIC HANDLING	MO	24.000		24.000	
	506-6001	ROCK FILTER DAMS (INSTALL) (TY 1)	LF	4,457.000		4,457.000	
	506-6002	ROCK FILTER DAMS (INSTALL) (TY 2)	LF	1,338.000		1,338.000	
	506-6011	ROCK FILTER DAMS (REMOVE)	LF	5,795.000		5,795.000	
	506-6020	CONSTRUCTION EXITS (INSTALL) (TY 1)	SY	889.000		889.000	
	506-6024	CONSTRUCTION EXITS (REMOVE)	SY	889.000		889.000	
	506-6029	EARTHWORK (EROSN & SEDMT CONT, IN VEH)	CY	2,500.000		2,500.000	
	506-6030	BACKHOE WORK (EROSION & SEDMT CONT)	HR	500.000		500.000	
	506-6033	BULLDOZER WORK (EROSION & SEDMT CONT)	HR	200.000		200.000	
	506-6038	TEMP SEDMT CONT FENCE (INSTALL)	LF	35,719.000		35,719.000	
	506-6039	TEMP SEDMT CONT FENCE (REMOVE)	LF	35,719.000		35,719.000	
	506-6046	TRACKHOE WORK (EROSION & SEDMT CONT)	HR	200.000		200.000	
	506-6047	TEMP SDMT CONT FENCE (INLET PROTECTION)	LF	522.000		522.000	
	512-6005	PORT CTB (FUR & INST)(F-SHAPE)(TY 1)	LF	5,700.000		5,700.000	
	512-6009	PORT CTB (FUR & INST)(LOW PROF)(TY 1)	LF	1,780.000		1,780.000	
	512-6010	PORT CTB (FUR & INST)(LOW PROF)(TY 2)	LF	160.000		160.000	
	512-6029	PORT CTB (MOVE)(F-SHAPE)(TY 1)	LF	5,580.000		5,580.000	
	512-6033	PORT CTB (MOVE)(LOW PROF)(TY 1)	LF	3,220.000		3,220.000	
	512-6034	PORT CTB (MOVE)(LOW PROF)(TY 2)	LF	240.000		240.000	
	512-6053	PORT CTB (REMOVE)(F-SHAPE)(TY 1)	LF	5,700.000		5,700.000	
	512-6057	PORT CTB (REMOVE)(LOW PROF)(TY 1)	LF	1,780.000		1,780.000	
	512-6058	PORT CTB (REMOVE)(LOW PROF)(TY 2)	LF	160.000		160.000	
	528-6008	COLORED TEXTURED CONC (5")	SY	52.000		52.000	
	529-6008	CONC CURB & GUTTER (TY II)	LF	17,889.000		17,889.000	
	530-6002	INTERSECTIONS (ACP)	SY	14,250.000		14,250.000	
	530-6005	DRIVEWAYS (ACP)	SY	6,055.000		6,055.000	
	530-6016	DRIVEWAYS (BASE)	SY	866.000		866.000	
	530-6017	DRIVEWAYS (CONC) (HES)	SY	2,924.000		2,924.000	
	531-6001	CONC SIDEWALKS (4")	SY	11,127.000		11,127.000	
	531-6004	CURB RAMPS (TY 1)	EA	3.000		3.000	
	531-6005	CURB RAMPS (TY 2)	EA	16.000		16.000	
	531-6010	CURB RAMPS (TY 7)	EA	18.000		18.000	
	531-6013	CURB RAMPS (TY 10)	EA	1.000		1.000	
	540-6001	MTL W-BEAM GD FEN (TIM POST)	LF	2,712.500		2,712.500	
	540-6006	MTL BEAM GD FEN TRANS (THRIE-BEAM)	EA	16.000		16.000	
	540-6014	SHORT RADIUS	LF	24.000		24.000	
	540-6015	DRIVEWAY TERMINAL ANCHOR SECTION	EA	1.000		1.000	



REVISED 7/22/2022

DISTRICT	COUNTY	CCSJ	SHEET
Tyler	Smith	0522-04-032	15C



# Estimate & Quantity Sheet

CONTROLLING PROJECT ID 0522-04-032

DISTRICT Tyler  
HIGHWAY FM 16

COUNTY Smith

CONTROL SECTION JOB				0522-04-032		TOTAL EST.	TOTAL FINAL
PROJECT ID				A00032122			
COUNTY				Smith			
HIGHWAY				FM 16			
ALT	BID CODE	DESCRIPTION	UNIT	EST.	FINAL		
	540-6016	DOWNSTREAM ANCHOR TERMINAL SECTION	EA	7.000		7.000	
	542-6001	REMOVE METAL BEAM GUARD FENCE	LF	300.000		300.000	
	544-6001	GUARDRAIL END TREATMENT (INSTALL)	EA	10.000		10.000	
	544-6003	GUARDRAIL END TREATMENT (REMOVE)	EA	4.000		4.000	
	545-6002	CRASH CUSH ATTEN (DES SOURCE)	EA	16.000		16.000	
	545-6003	CRASH CUSH ATTEN (MOVE & RESET)	EA	12.000		12.000	
	545-6005	CRASH CUSH ATTEN (REMOVE)	EA	16.000		16.000	
	560-6004	MAILBOX INSTALL-S (TWG-POST) TY 2	EA	30.000		30.000	
	560-6005	MAILBOX INSTALL-D (TWG-POST) TY 2	EA	7.000		7.000	
	560-6006	MAILBOX INSTALL-M (TWG-POST) TY 2	EA	7.000		7.000	
	618-6023	CONDT (PVC) (SCH 40) (2")	LF	233.000		233.000	
	618-6034	CONDT (PVC) (SCH 40) (4") (BORE)	LF	222.000		222.000	
	620-6007	ELEC CONDR (NO.8) BARE	LF	590.000		590.000	
	620-6009	ELEC CONDR (NO.6) BARE	LF	25.000		25.000	
	620-6010	ELEC CONDR (NO.6) INSULATED	LF	50.000		50.000	
	621-6005	TRAY CABLE (4 CONDR) (12 AWG)	LF	237.000		237.000	
	624-6009	GROUND BOX TY D (162922)	EA	3.000		3.000	
	624-6028	REMOVE GROUND BOX	EA	3.000		3.000	
	628-6116	ELC SRV TY D 120/240 060(NS)AL(E)SP(O)	EA	1.000		1.000	
	636-6001	ALUMINUM SIGNS (TY A)	SF	918.000		918.000	
	636-6002	ALUMINUM SIGNS (TY G)	SF	408.000		408.000	
	644-6001	IN SM RD SN SUP&AM TY10BWG(1)SA(P)	EA	17.000		17.000	
	644-6004	IN SM RD SN SUP&AM TY10BWG(1)SA(T)	EA	4.000		4.000	
	644-6034	IN SM RD SN SUP&AM TYS80(1)SA(U-1EXT)	EA	5.000		5.000	
	644-6036	IN SM RD SN SUP&AM TYS80(1)SA(U-BM)	EA	6.000		6.000	
	644-6060	IN SM RD SN SUP&AM TYTWT(1)WS(P)	EA	46.000		46.000	
	644-6061	IN SM RD SN SUP&AM TYTWT(1)WS(T)	EA	2.000		2.000	
	644-6076	REMOVE SM RD SN SUP&AM	EA	116.000		116.000	
	644-6097	IN SM RD SN SUP&AM TYS80(1)SA(P-1EXT)	EA	2.000		2.000	
	647-6001	INSTALL LRSS (STRUCT STEEL)	LB	2,118.000		2,118.000	
	647-6006	REMOVE LRSA (FOUNDATION ONLY)(24 IN)	EA	2.000		2.000	
	658-6013	INSTL DEL ASSM (D-SW)SZ (BRF)CTB	EA	29.000		29.000	
	658-6015	INSTL DEL ASSM (D-SW)SZ (BRF)GF1	EA	44.000		44.000	
	658-6047	INSTL OM ASSM (OM-2Y)(WC)GND	EA	41.000		41.000	
	662-6004	WK ZN PAV MRK NON-REMOV (W)4"(SLD)	LF	29,312.000		29,312.000	
	662-6016	WK ZN PAV MRK NON-REMOV (W)24"(SLD)	LF	11.000		11.000	
	662-6034	WK ZN PAV MRK NON-REMOV (Y)4"(SLD)	LF	29,308.000		29,308.000	



REVISED 7/22/2022

DISTRICT	COUNTY	CCSJ	SHEET
Tyler	Smith	0522-04-032	15D





# Estimate & Quantity Sheet

CONTROLLING PROJECT ID 0522-04-032

DISTRICT Tyler  
HIGHWAY FM 16

COUNTY Smith

CONTROL SECTION JOB				0522-04-032		TOTAL EST.	TOTAL FINAL
PROJECT ID				A00032122			
COUNTY				Smith			
HIGHWAY				FM 16			
ALT	BID CODE	DESCRIPTION	UNIT	EST.	FINAL		
	662-6050	WK ZN PAV MRK REMOV (REFL) TY II-A-A	EA	3,357.000		3,357.000	
	662-6057	WK ZN PAV MRK REMOV (TRAF BTN) TY W	LF	61,938.000		61,938.000	
	662-6059	WK ZN PAV MRK REMOV (TRAF BTN) TY Y	LF	67,138.000		67,138.000	
	662-6061	WK ZN PAV MRK REMOV (W)4"(DOT)	LF	650.000		650.000	
	662-6075	WK ZN PAV MRK REMOV (W)24"(SLD)	LF	11.000		11.000	
	662-6094	WK ZN PAV MRK REMOV (Y)4"(DOT)	LF	394.000		394.000	
	666-6006	REFL PAV MRK TY I (W)4"(DOT)(100MIL)	LF	261.000		261.000	
	666-6036	REFL PAV MRK TY I (W)8"(SLD)(100MIL)	LF	1,903.000		1,903.000	
	666-6042	REFL PAV MRK TY I (W)12"(SLD)(100MIL)	LF	247.000		247.000	
	666-6048	REFL PAV MRK TY I (W)24"(SLD)(100MIL)	LF	1,511.000		1,511.000	
	666-6102	REF PAV MRK TY I(W)36"(YLD TRI)(100MIL)	EA	14.000		14.000	
	666-6224	PAVEMENT SEALER 4"	LF	129,076.000		129,076.000	
	666-6300	RE PM W/RET REQ TY I (W)4"(BRK)(100MIL)	LF	9,730.000		9,730.000	
	666-6303	RE PM W/RET REQ TY I (W)4"(SLD)(100MIL)	LF	46,621.000		46,621.000	
	666-6312	RE PM W/RET REQ TY I (Y)4"(BRK)(100MIL)	LF	8,328.000		8,328.000	
	666-6315	RE PM W/RET REQ TY I (Y)4"(SLD)(100MIL)	LF	52,432.000		52,432.000	
	668-6019	PREFAB PAV MRK TY B (W)(ARROW)	EA	55.000		55.000	
	668-6020	PREFAB PAV MRK TY B (W)(DBL ARROW)	EA	3.000		3.000	
	668-6027	PREFAB PAV MRK TY B (W)(WORD)	EA	10.000		10.000	
	668-6083	PREFAB PAV MRK TY C (W) (LNDP ARROW)	EA	2.000		2.000	
	672-6007	REFL PAV MRKR TY I-C	EA	478.000		478.000	
	672-6009	REFL PAV MRKR TY II-A-A	EA	1,389.000		1,389.000	
	677-6001	ELIM EXT PAV MRK & MRKS (4")	LF	10,188.000		10,188.000	
	677-6007	ELIM EXT PAV MRK & MRKS (24")	LF	11.000		11.000	
	678-6001	PAV SURF PREP FOR MRK (4")	LF	130,240.000		130,240.000	
	680-6002	INSTALL HWY TRF SIG (ISOLATED)	EA	1.000		1.000	
	680-6004	REMOVING TRAFFIC SIGNALS	EA	1.000		1.000	
	682-6001	VEH SIG SEC (12")LED(GRN)	EA	4.000		4.000	
	682-6002	VEH SIG SEC (12")LED(GRN ARW)	EA	4.000		4.000	
	682-6003	VEH SIG SEC (12")LED(YEL)	EA	4.000		4.000	
	682-6004	VEH SIG SEC (12")LED(YEL ARW)	EA	8.000		8.000	
	682-6005	VEH SIG SEC (12")LED(RED)	EA	4.000		4.000	
	682-6006	VEH SIG SEC (12")LED(RED ARW)	EA	4.000		4.000	
	682-6018	PED SIG SEC (LED)(COUNTDOWN)	EA	8.000		8.000	
	682-6049	BACKPLATE W/REFL BRDR(4 SEC)	EA	4.000		4.000	
	682-6060	BACKPLATE W/REFL BRDR(3 SEC)	EA	4.000		4.000	
	684-6007	TRF SIG CBL (TY A)(12 AWG)(2 CONDR)	LF	994.000		994.000	

REVISED 7/22/2022

DISTRICT	COUNTY	CCSJ	SHEET
Tyler	Smith	0522-04-032	15E



# Estimate & Quantity Sheet

CONTROLLING PROJECT ID 0522-04-032

DISTRICT Tyler  
HIGHWAY FM 16

COUNTY Smith

CONTROL SECTION JOB				0522-04-032		TOTAL EST.	TOTAL FINAL
PROJECT ID				A00032122			
COUNTY				Smith			
HIGHWAY				FM 16			
ALT	BID CODE	DESCRIPTION	UNIT	EST.	FINAL		
	684-6010	TRF SIG CBL (TY A)(12 AWG)(5 CONDR)	LF	1,236.000		1,236.000	
	684-6012	TRF SIG CBL (TY A)(12 AWG)(7 CONDR)	LF	611.000		611.000	
	685-6004	INSTL RDSO FLSH BCN ASSM (SOLAR PWRD)	EA	2.000		2.000	
	686-6021	INS TRF SIG PL AM (S)1 ARM(20')	EA	2.000		2.000	
	686-6043	INS TRF SIG PL AM(S)1 ARM(40')LUM	EA	1.000		1.000	
	686-6057	INS TRF SIG PL AM(S)1 ARM(55')	EA	1.000		1.000	
	688-6001	PED DETECT PUSH BUTTON (APS)	EA	8.000		8.000	
	688-6003	PED DETECTOR CONTROLLER UNIT	EA	1.000		1.000	
	3076-6023	D-GR HMA TY-C PG70-22	TON	5,904.000		5,904.000	
	3076-6038	D-GR HMA TY-D PG64-22 (LEVEL-UP)	TON	75.000		75.000	
	3077-6001	SP MIXESSP-BPG64-22	TON	7,424.000		7,424.000	
	3077-6011	SP MIXESSP-CPG64-22	TON	31,295.000		31,295.000	
	3077-6022	SP MIXESSP-CSAC-A PG70-22	TON	16,397.000		16,397.000	
	3077-6075	TACK COAT	GAL	16,379.000		16,379.000	
	4021-6001	TIP TESTING(DRILL SHAFT)	EA	16.000		16.000	
	5129-6001	INSTALL FTB	LF	117.000		117.000	
	5129-6002	REMOVE FTB	LF	117.000		117.000	
	6001-6001	PORTABLE CHANGEABLE MESSAGE SIGN	DAY	400.000		400.000	
	6001-6002	PORTABLE CHANGEABLE MESSAGE SIGN	EA	4.000		4.000	
	6054-6002	COAXIAL CABLE	LF	63.000		63.000	
	6185-6002	TMA (STATIONARY)	DAY	60.000		60.000	
	6185-6005	TMA (MOBILE OPERATION)	DAY	60.000		60.000	
	6306-6001	VIVDS PROSR SYS	EA	1.000		1.000	
	6306-6002	VIVDS CAM ASSY FXD LNS	EA	2.000		2.000	
	6306-6005	VIVDS CNTRL SOFTWARE	EA	1.000		1.000	
	6306-6007	VIVDS CABLING	LF	721.000		721.000	
18		LAW ENFORCEMENT: CONTRACTOR FORCE ACCOUNT WORK (PARTICIPATING)	LS	1.000		1.000	
		EROSION CONTROL MAINTENANCE: CONTRACTOR FORCE ACCOUNT WORK (PART)	LS	1.000		1.000	
		SAFETY CONTINGENCY: CONTRACTOR FORCE ACCOUNT WORK (PARTICIPATING)	LS	1.000		1.000	



REVISED 7/22/2022

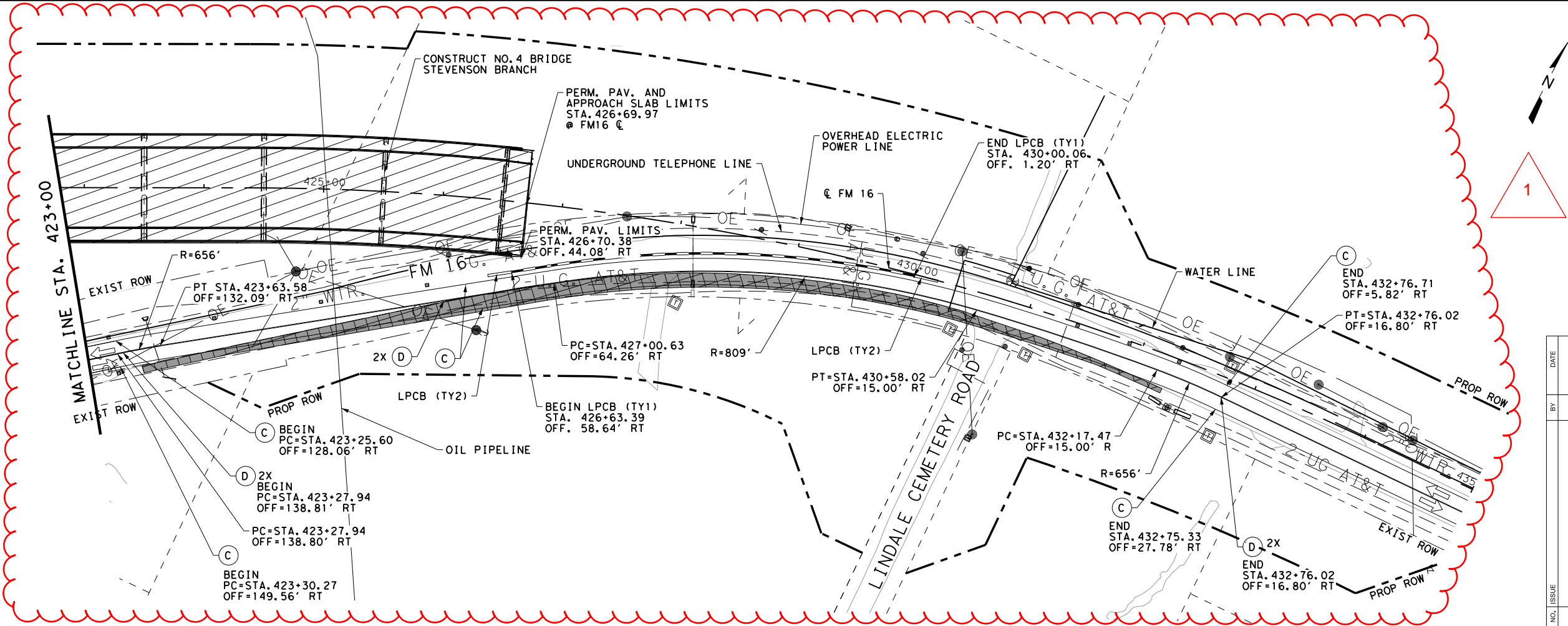
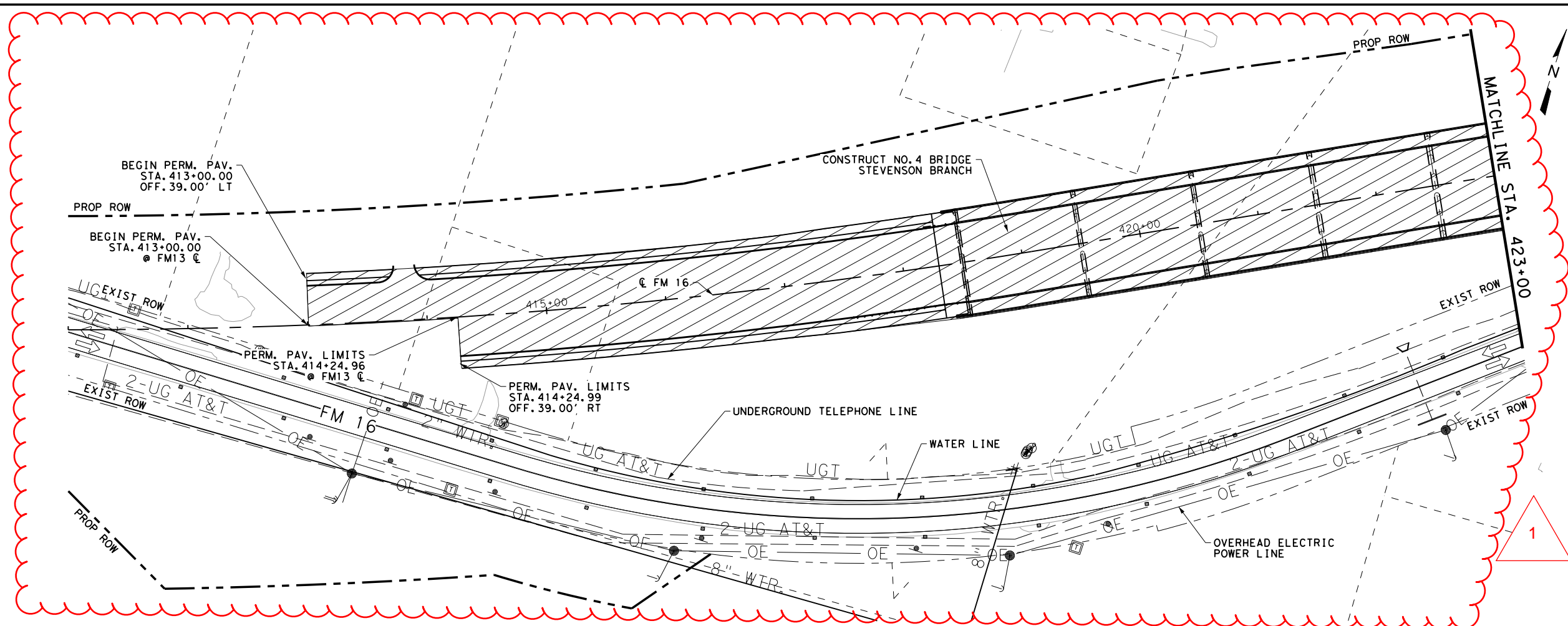






CK: \_\_\_\_\_  
 DW: \_\_\_\_\_  
 CK: \_\_\_\_\_  
 DW: \_\_\_\_\_

- ### TCP LEGEND
- TEMPORARY CONSTRUCTION (THIS PHASE)
  - PERMANENT CONSTRUCTION (THIS PHASE)
  - TEMPORARY CONSTRUCTION (PREVIOUS PHASE)
  - PERMANENT CONSTRUCTION (PREVIOUS PHASE)
  - TEMPORARY DRIVEWAY
  - PROPOSED TRAFFIC ARROW
  - EXISTING TRAFFIC ARROW
  - SHADOW VEHICLE (WITH TMA)
  - LPCB (TYPE 2)
  - LPCB (TYPE 1)
  - PCTB
  - CCA
  - 42" CONE
  - DRUM
  - WK ZN PAV MRK NON-REMOV (W) (4") (SLD)
  - WK ZN PAV MRK NON-REMOV (Y) (4") (SLD)
  - WK ZN PAV MRK REMOV (W) (4") (DOT)
  - WK ZN PAV MRK REMOV (Y) (4") (DOT)
  - WK ZN PAV MRK REMOV (TRAF BTN) TY W
  - WK ZN PAV MRK REMOV (TRAF BTN) TY Y
  - WK ZN PAV MRK REMOV (REFL) TY II-A-A



0 50' 100'  
 SCALE IN FEET  
 1" = 100' H



**FREESE NICHOLS**  
 Freese and Nichols, Inc.  
 Texas Registered Engineering Firm F-2144

**FM 16  
 TCP  
 LAYOUT  
 PHASE 1 STEP B**

SHEET 1 OF 1



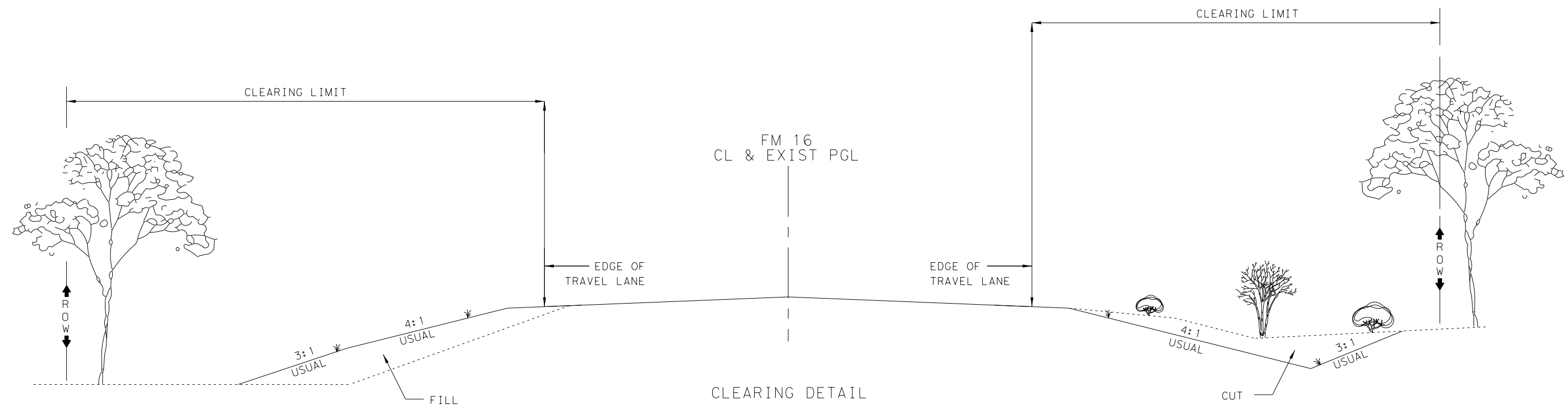
NO.	ISSUE	DATE	BY

ADDENDUM #01  
 BBB 07/22/22

CONT	SECT	JOB	HIGHWAY
0522	04	032	FM 16
DIST	COUNTY	SHEET NO.	
TYL	SMITH	36B	

DATE: 7/21/2022 3:47:41 PM  
 FILE: \\freese\p11\cs02\ics\_pdf\_work\_dir\1962\6904\_92\FM16-IRT-PL-TCP-PIB-01.dgn

DN: CK: DW: CK: CK:



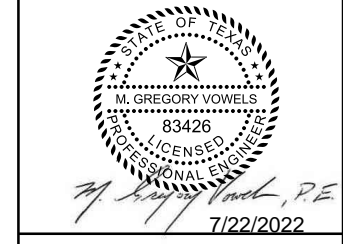
CLEARING DETAIL

PREPARING ROW DETAILS

NOTES:

- 1) PAYMENT WILL BE MADE AT THE UNIT BID PRICE FOR PREPARING RIGHT OF WAY BY THE STATION. STATION LIMITS WILL BE SHOWN ELSEWHERE IN THE PLANS. ALL TRIMMING APPLIES TO BOTH SIDES OF THE ROADWAY.
- 2) ALL TREE LIMBS EXTENDING INTO THE ROW SHALL BE REMOVED, UNLESS OTHERWISE SHOWN ON PLANS. VIRTICLE CLEARING LIMITS ARE FROM NATURAL GROUND THROUGH TOP OF TREE OR AS DIRECTED.
- 3) CLEARING OPERATIONS SHALL BE PERFORMED IN ACCORDANCE TO ITEM 100, "PREPARING RIGHT OF WAY", EXCEPT THOSE SHOWN BY THESE DETAILS.
- 4) WHERE STEEP SLOPES MAKE GRINDING OPERATIONS IMPRACTICAL, AND THE ENGINEER APPROVES IN WRITING, THE CONTRACTOR MAY CUT STUMPS OFF EVEN WITH THE GROUND.

DATE: 7/21/2022 9:49:01 PM  
 FILE: \\freese\pw11\cs02\ics\pdf\_work\di\1986\6905\_74\FM16-RDWAY-DI-DETAILS03.dgn



**FRESE NICHOLS**  
 Freese and Nichols, Inc.  
 Texas Registered Engineering Firm F-2144

**FM 16**  
**MISCELLANEOUS**  
**DETAILS**

SHEET 1 OF 1



NO.	ISSUE	DATE	BY

APPENDIX #01  
 NRS 07/22/22

CONT	SECT	JOB	HIGHWAY
0522	04	032	FM 16
DIST	COUNTY	SHEET NO.	
TYL	SMITH	200B	