

SUBJECT: PLANS AND PROPOSAL ADDENDUMS
PROJECT: STP 2022(343)MM CONTROL: 0987-03-014
COUNTY: HAYS
LETTING: 08/04/2022
REFERENCE NO: 0726

PROPOSAL ADDENDUMS

- _ PROPOSAL COVER
X BID INSERTS (SH. NO.: ALL)
_ GENERAL NOTES (SH. NO.:)
X SPEC LIST (SH. NO.: ALL)
_ SPECIAL PROVISIONS:
_ ADDED:

DELETED:

_ SPECIAL SPECIFICATIONS:
_ ADDED:

DELETED:

X OTHER: PLAN SHEET AND OTHER CHANGES

DESCRIPTION OF ABOVE CHANGES
(INCLUDING PLANS SHEET CHANGES)

***** BID INSERTS *****

ADDED THE FOLLOWING BID ITEMS: 403-6001, 423-6005

REMOVED THE FOLLOWING BID ITEM: 423-6004

***** SPEC LIST *****

ADDED THE FOLLOWING ITEM: 403

***** PLAN SHEETS *****

SHEET 2: REMOVED STANDARD MCPSWMD-19(AUS), ADDED RW(SF) AND RW(SFC)

SHEETS 9,9A-9C: ADDED BID ITEMS 403-6001 AND 423-6005, REMOVED 423-6004,
AND SHIFT IN BID ITEMS BETWEEN SHEETS

SHEET 10: ADDED BID ITEMS 403-6001 AND 423-6005, REMOVED 423-6004

SHEET 18: IDENTIFIED END PHASE 4 WORK ZONE LOCATION

DESCRIPTION OF ABOVE CHANGES
(INCLUDING PLANS SHEET CHANGES)

(CONTINUED)

SHEET 19: REVISED NOTE FOR PHASE 2 INSTALL TEMPORARY PAVEMENT AND FOR PHASE 4 TO NOT BEGIN UNTIL 5/1/2023

SHEET 21: REVISED STATION LIMITS FOR PHASE 1 WORK.

SHEET 22: REVISED TYPICAL SECTION FOR PHASE 3 WORK.

SHEET 53: ADDED NOTE FOR MONUMENT WORK TO BE PERFORMED.

SHEET 66: ADDED DETAILS FOR SPREAD FOOTING RETAINING WALL 1.

SHEET 67: ADDED DETAILS FOR SPREAD FOOTING RETAINING WALL 2.

SHEET 68: REMOVED STANDARD MCPSWMD-19 (AUS) AND REPLACED IT WITH RW(SF).

SHEET 68A: ADDED STANDARD RW(SFC).

GENERAL

- 1 TITLE SHEET
2 INDEX OF SHEETS
3 - 4 PROJECT LAYOUT
5 - 7 TYPICAL SECTIONS
8, 8A - 8M GENERAL NOTES
9, 9A - 9C ESTIMATE AND QUANTITIES
10 - 12 SUMMARY OF QUANTITIES
13 TRAFFIC SIGNAL SUMMARY OF QUANTITIES
14 - 17 SUMMARY OF SMALL SIGNS

TRAFFIC CONTROL PLAN

- 18 TRAFFIC CONTROL PLAN - PHASING
19 TRAFFIC CONTROL PLAN - NARRATIVE
20 TCP - GENERAL NOTES
21 - 22 TCP - TYPICAL SECTIONS
23 TCP - ADVANCED WARNING SIGNS
24 TRAFFIC CONTROL PLAN - DETOUR PHASE 2
25 TRAFFIC CONTROL PLAN - DETOUR PHASE 3
26 TRAFFIC CONTROL PLAN - DETOUR PHASE 4
27 TRAFFIC CONTROL PLAN - DETOUR PHASE 5
28 - 29 TRAFFIC CONTROL PLAN - PHASE 3

TRAFFIC CONTROL STANDARDS

- 30 - 41 BC(1)-21 - BC(12)-21
42 TCP(2-1)-18
43 WZ(RCD)-13

ROADWAY DETAILS

- 44 HORIZONTAL ALIGNMENT DATA & SUPERELEVATION
45 - 54 ROADWAY PLAN AND PROFILE
55 ROADWAY END TREATMENT
56 INTERSECTION LAYOUT
57 DRIVEWAY SUMMARY

ROADWAY STANDARDS

- 58 GF(31)-19
59 GF(31)DAT-19
60 GF(31)MS-19
61 SGT(12S)31-18
62 SGT(15)31-20
63 DW - 20 (AUS)
64 WF(1) - 10
65 CLF - 10

RETAINING WALL SHEETS

- 66 - 67 RETAINING WALL PLAN AND PROFILE

RETAINING WALL STANDARDS

- 68 RW(SF)
68A RW(SFC)

DRAINAGE SHEETS

- 69 OVERALL EXTERNAL DRAINAGE AREA MAP
70 - 73 EXTERNAL DRAINAGE AREA MAP
74 - 76 HYDRAULIC DATA
77 PROPOSED CULVERT #1 - PLAN AND PROFILE
78 PROPOSED CULVERT #2 - PLAN AND PROFILE
79 EXISTING CULVERT #1 - HYDRAULIC DATA
80 PROPOSED CULVERT #1 - HYDRAULIC DATA
81 PROPOSED CULVERT #2 - HYDRAULIC DATA

DRAINAGE STANDARDS

- 82 CH PW-0
83 PSET-SP
84 - 85 SETP-CD

TRAFFIC ITEMS

- 86 TRAFFIC SIGNAL NOTES
87 EXIST TRAFFIC SIGNAL LAYOUT
88 PROP TRAFFIC SIGNAL LAYOUT
89 PROP ELECTRICAL SCHEDULE
90 PROP TRAFFIC SIGNAL ELEVATION
91 PROP TRAFFIC SIGNAL LOAD SWITCH
92 PROP TRAFFIC SIGNAL RADAR
93 TEMP TRAFFIC SIGNAL LAYOUT
94 - 99 SIGNAGE AND STRIPING PLAN

TRAFFIC STANDARDS

- 100 - 101 SMA-80(1)-80(2)-12
102 TS-FD-12
103 MA-C-12
104 MA-D-12
105 MA-DPD-20
106 CFA-12
107 LUM-A-12
108 TS-BP-20
109 TS-CF-21
110 ED(1)-14
111 ED(2)-14
112 ED(3)-14
113 ED(4)-14
114 ED(5)-14
115 ED(6)-14
116 ED(7)-14
117 ED(8)-14
118 ED(10)-14
119 ED(12)-14
120 SNS-95
121 BBU-14 (AUS)
122 MAD-14 (AUS)
123 PPA-14 (AUS)
124 PM1-20
125 PM2-20
126 PM3-20
127 D & OM(1)-20
128 D & OM(5)-20
129 SMD(GEN)-08
130 SMD(SLID-1)-08
131 SMD(SLIP-2)-08
132 RFBA-13

EXISTING UTILITIES

- 133 EXISTING UTILITY LEGEND
134 - 139 EXISTING UTILITY LAYOUT

EROSION CONTROL SHEETS

- 140 STORM WATER POLLUTION PREVENTION PLAN
141 - 144 EROSION CONTROL PLAN FM621
145 - 146 EROSION CONTROL PLAN CR 266

EROSION CONTROL STANDARDS

- 147 TxDOT STANDARD - COA STD 6105-01
148 EC(1)-16
149 EC(2)-16
150 EC(3)-16
151 EC(6)-16
152 EPIC

ADDENDUM #1 07/21/2022

Professional Engineer seal for Kevin J. Hoffman, State of Texas, License No. 103570, dated 7/22/2022.

FM 621 SAFETY IMPROVEMENTS INDEX OF SHEETS

SHEET 1 OF 1

THE STANDARD SHEETS SPECIFICALLY IDENTIFIED ABOVE HAVE BEEN ISSUED BY ME AND ARE APPLICABLE TO THIS PROJECT.

Signature and date 7/22/2022

Table with project details: 2021 Texas Department of Transportation, FEDERAL AID PROJECT NO. STP 2022(343)MM, ETC., STATE TEXAS, COUNTY HAYS, JOB 014, ETC., HIGHWAY NO. FM 621, ETC.

FILE: \$FILES \$TIMES \$DATES



Estimate & Quantity Sheet

CONTROLLING PROJECT ID 0987-03-014

DISTRICT Austin
HIGHWAY FM 621, OLD BASTROP HWY

COUNTY Hays

CONTROL SECTION JOB				0914-33-085		0987-03-011		0987-03-014		TOTAL EST.	TOTAL FINAL
PROJECT ID				A00132588		A00063383		A00177466			
COUNTY				Hays		Hays		Hays			
HIGHWAY				OLD BASTROP HWY		FM 621		FM 621			
ALT	BID CODE	DESCRIPTION	UNIT	EST.	FINAL	EST.	FINAL	EST.	FINAL		
	100-6002	PREPARING ROW	STA	21.000				26.000		47.000	
	104-6009	REMOVING CONC (RIPRAP)	SY					12.000		12.000	
	105-6030	REMOVING STAB BASE & ASPH PAV (8"-14")	SY					8,248.000		8,248.000	
	110-6001	EXCAVATION (ROADWAY)	CY	2,909.000				4,852.000		7,761.000	
	132-6003	EMBANKMENT (FINAL)(ORD COMP)(TY B)	CY	2,084.000		1,500.000		3,941.000		7,525.000	
	160-6003	FURNISHING AND PLACING TOPSOIL (4")	SY	6,123.000				8,443.000		14,566.000	
	164-6003	BROADCAST SEED (PERM) (RURAL) (CLAY)	SY	6,123.000				8,443.000		14,566.000	
	164-6071	BROADCAST SEED (TEMP)(WARM OR COOL)	SY	6,123.000				8,443.000		14,566.000	
	168-6001	VEGETATIVE WATERING	MG	379.000				568.000		947.000	
	169-6001	SOIL RETENTION BLANKETS (CL 1) (TY A)	SY	6,123.000				8,443.000		14,566.000	
	247-6366	FL BS (CMP IN PLC)(TY A GR 5)(FNAL POS)	CY	2,001.000		840.000		3,417.000		6,258.000	
	260-6009	LIME TRT (EXST MATL)(10")	SY	6,500.000		3,061.000		11,850.000		21,411.000	
	260-6043	LIME (HYD, COM OR QK)(SLURRY)	TON	144.000		67.000		261.000		472.000	
	310-6001	PRIME COAT (MULTI OPTION)	GAL	855.000		455.000		2,089.000		3,399.000	
	354-6003	PLAN & TEXT ASPH CONC PAV(0" TO 3")	SY	427.000				213.000		640.000	
1	403-6001	TEMPORARY SPL SHORING	SF	673.000						673.000	
1	416-6032	DRILL SHAFT (TRF SIG POLE) (36 IN)	LF			53.000				53.000	
1	423-6005	RETAINING WALL (SPREAD FOOTING)	SF	404.000						404.000	
	432-6002	RIPRAP (CONC)(5 IN)	CY	0.700				0.700		1.400	
	432-6045	RIPRAP (MOW STRIP)(4 IN)	CY	6.000						6.000	
	464-6003	RC PIPE (CL III)(18 IN)	LF	70.000						70.000	
	464-6005	RC PIPE (CL III)(24 IN)	LF	127.000				73.000		200.000	
	466-6097	HEADWALL (CH - PW - 0) (DIA= 24 IN)	EA	1.000						1.000	
	467-6359	SET (TY II) (18 IN) (RCP) (4: 1) (P)	EA	6.000						6.000	
	467-6390	SET (TY II) (24 IN) (RCP) (4: 1) (C)	EA	3.000				2.000		5.000	
	496-6004	REMOV STR (SET)	EA	2.000						2.000	
	496-6006	REMOV STR (HEADWALL)	EA	2.000						2.000	
	496-6007	REMOV STR (PIPE)	LF	110.000				96.000		206.000	
	496-6050	REMOV STR (DRIVEWAY CULVERT)	EA	4.000						4.000	
	500-6001	MOBILIZATION	LS					1.000		1.000	
	502-6001	BARRICADES, SIGNS AND TRAFFIC HANDLING	MO	3.500				3.500		7.000	
	506-6001	ROCK FILTER DAMS (INSTALL) (TY 1)	LF	56.000						56.000	
	506-6002	ROCK FILTER DAMS (INSTALL) (TY 2)	LF	20.000						20.000	
	506-6004	ROCK FILTER DAMS (INSTALL) (TY 4)	LF	76.000						76.000	
	506-6011	ROCK FILTER DAMS (REMOVE)	LF	76.000						76.000	
	506-6020	CONSTRUCTION EXITS (INSTALL) (TY 1)	SY	156.000				156.000		312.000	
	506-6024	CONSTRUCTION EXITS (REMOVE)	SY	156.000				156.000		312.000	

1 Revised 7/21/2022



Estimate & Quantity Sheet

CONTROLLING PROJECT ID 0987-03-014

DISTRICT Austin
HIGHWAY FM 621, OLD BASTROP HWY

COUNTY Hays

CONTROL SECTION JOB				0914-33-085		0987-03-011		0987-03-014		TOTAL EST.	TOTAL FINAL
PROJECT ID				A00132588		A00063383		A00177466			
COUNTY				Hays		Hays		Hays			
HIGHWAY				OLD BASTROP HWY		FM 621		FM 621			
ALT	BID CODE	DESCRIPTION	UNIT	EST.	FINAL	EST.	FINAL	EST.	FINAL		
	506-6038	TEMP SEDMT CONT FENCE (INSTALL)	LF	1,946.000				4,376.000		6,322.000	
	506-6039	TEMP SEDMT CONT FENCE (REMOVE)	LF	1,946.000				4,376.000		6,322.000	
	506-6040	BIODEG EROSN CONT LOGS (INSTL) (8")	LF	487.000				1,094.000		1,581.000	
	506-6043	BIODEG EROSN CONT LOGS (REMOVE)	LF	487.000				1,094.000		1,581.000	
	508-6001	CONSTRUCTING DETOURS	SY					387.000		387.000	
	530-6005	DRIVEWAYS (ACP)	SY	104.000				250.000		354.000	
	540-6001	MTL W-BEAM GD FEN (TIM POST)	LF	80.000						80.000	
	544-6006	GDRAIL END TRT(INST)(WOOD POST)(TY III)	EA	2.000						2.000	
	550-6001	CHAIN LINK FENCE (INSTALL) (6')	LF	296.000				180.000		476.000	
	550-6003	CHAIN LINK FENCE (REMOVE)	LF	180.000				247.000		427.000	
	552-6002	WIRE FENCE (TY B)	LF	2,542.000				2,475.000		5,017.000	
	618-6046	CONDT (PVC) (SCH 80) (2")	LF			316.000				316.000	
	618-6053	CONDT (PVC) (SCH 80) (3")	LF			159.000				159.000	
	618-6054	CONDT (PVC) (SCH 80) (3") (BORE)	LF			1,059.000				1,059.000	
	620-6007	ELEC CONDR (NO.8) BARE	LF			1,383.000				1,383.000	
	620-6008	ELEC CONDR (NO.8) INSULATED	LF			2,545.000				2,545.000	
	620-6009	ELEC CONDR (NO.6) BARE	LF			173.000				173.000	
	620-6010	ELEC CONDR (NO.6) INSULATED	LF			345.000				345.000	
	624-6010	GROUND BOX TY D (162922)W/APRON	EA			5.000				5.000	
	628-6165	ELC SRV TY D 120/240 070(NS)AL(E)SP(O)	EA			1.000				1.000	
	636-6001	ALUMINUM SIGNS (TY A)	SF	84.000		18.750		86.000		188.750	
	644-6001	IN SM RD SN SUP&AM TY10BWG(1)SA(P)	EA	4.000		3.000		5.000		12.000	
	644-6004	IN SM RD SN SUP&AM TY10BWG(1)SA(T)	EA	5.000				5.000		10.000	
	644-6007	IN SM RD SN SUP&AM TY10BWG(1)SA(U)	EA	2.000						2.000	
	644-6068	RELOCATE SM RD SN SUP&AM TY 10BWG	EA			5.000				5.000	
	644-6076	REMOVE SM RD SN SUP&AM	EA	5.000				5.000		10.000	
	658-6057	INSTL OM ASSM (OM-3R)(TWT)GND	EA	2.000						2.000	
	662-6018	WK ZN PAV MRK NON-REMOV (W)(DBL ARW)	EA	1.000						1.000	
	662-6063	WK ZN PAV MRK REMOV (W)4"(SLD)	LF	1,856.000				1,042.000		2,898.000	
	662-6075	WK ZN PAV MRK REMOV (W)24"(SLD)	LF	34.000						34.000	
	662-6095	WK ZN PAV MRK REMOV (Y)4"(SLD)	LF	906.000				525.000		1,431.000	
	666-6036	REFL PAV MRK TY I (W)8"(SLD)(100MIL)	LF			1,801.000				1,801.000	
	666-6048	REFL PAV MRK TY I (W)24"(SLD)(100MIL)	LF	28.000		56.000		40.000		124.000	
	666-6054	REFL PAV MRK TY I (W)(ARROW)(100MIL)	EA			8.000				8.000	
	666-6078	REFL PAV MRK TY I (W)(WORD)(100MIL)	EA			8.000				8.000	
	666-6141	REFL PAV MRK TY I (Y)12"(SLD)(100MIL)	LF	200.000				210.000		410.000	
	666-6170	REFL PAV MRK TY II (W) 4" (SLD)	LF	4,350.000				5,267.000		9,617.000	

Revised 7/21/2022

DISTRICT	COUNTY	CCSJ	SHEET
Austin	Hays	0987-03-014	9A



Estimate & Quantity Sheet

CONTROLLING PROJECT ID 0987-03-014

DISTRICT Austin
HIGHWAY FM 621, OLD BASTROP HWY

COUNTY Hays

CONTROL SECTION JOB				0914-33-085		0987-03-011		0987-03-014		TOTAL EST.	TOTAL FINAL
PROJECT ID				A00132588		A00063383		A00177466			
COUNTY				Hays		Hays		Hays			
HIGHWAY				OLD BASTROP HWY		FM 621		FM 621			
ALT	BID CODE	DESCRIPTION	UNIT	EST.	FINAL	EST.	FINAL	EST.	FINAL		
	666-6178	REFL PAV MRK TY II (W) 8" (SLD)	LF			1,801.000				1,801.000	
	666-6182	REFL PAV MRK TY II (W) 24" (SLD)	LF	28.000		56.000		40.000		124.000	
	666-6184	REFL PAV MRK TY II (W) (ARROW)	EA			8.000				8.000	
	666-6192	REFL PAV MRK TY II (W) (WORD)	EA			8.000				8.000	
	666-6207	REFL PAV MRK TY II (Y) 4" (SLD)	LF	5,044.000		230.000		5,220.000		10,494.000	
	666-6212	REFL PAV MRK TY II (Y) 12" (SLD)	LF	200.000				210.000		410.000	
	666-6303	RE PM W/RET REQ TY I (W)4"(SLD)(100MIL)	LF	4,350.000				5,267.000		9,617.000	
	666-6345	REF PROF PAV MRK TY I(Y)4"(SLD)(100MIL)	LF	5,044.000		230.000		5,220.000		10,494.000	
	672-6009	REFL PAV MRKR TY II-A-A	EA	176.000				253.000		429.000	
	672-6012	TRAFFIC BUTTON TY I-C	EA			95.000				95.000	
	677-6001	ELIM EXT PAV MRK & MRKS (4")	LF	174.000						174.000	
	677-6007	ELIM EXT PAV MRK & MRKS (24")	LF	22.000						22.000	
	680-6002	INSTALL HWY TRF SIG (ISOLATED)	EA			1.000				1.000	
	680-6004	REMOVING TRAFFIC SIGNALS	EA			1.000				1.000	
	681-6001	TEMP TRAF SIGNALS	EA			1.000				1.000	
	682-6001	VEH SIG SEC (12")LED(GRN)	EA			8.000				8.000	
	682-6002	VEH SIG SEC (12")LED(GRN ARW)	EA			4.000				4.000	
	682-6003	VEH SIG SEC (12")LED(YEL)	EA			8.000				8.000	
	682-6004	VEH SIG SEC (12")LED(YEL ARW)	EA			8.000				8.000	
	682-6005	VEH SIG SEC (12")LED(RED)	EA			8.000				8.000	
	682-6006	VEH SIG SEC (12")LED(RED ARW)	EA			4.000				4.000	
	682-6049	BACKPLATE W/REFL BRDR(4 SEC)	EA			4.000				4.000	
	682-6060	BACKPLATE W/REFL BRDR(3 SEC)	EA			8.000				8.000	
	684-6031	TRF SIG CBL (TY A)(14 AWG)(5 CONDR)	LF			1,849.000				1,849.000	
	684-6033	TRF SIG CBL (TY A)(14 AWG)(7 CONDR)	LF			985.000				985.000	
	685-6005	RELOCT RDSO FLSH BCN AM (SOLAR PWRD)	EA	1.000				1.000		2.000	
	686-6047	INS TRF SIG PL AM(S)1 ARM(44')LUM	EA			3.000				3.000	
	686-6051	INS TRF SIG PL AM(S)1 ARM(48')LUM	EA			1.000				1.000	
	730-6107	FULL - WIDTH MOWING	CYC	2.000				2.000		4.000	
	734-6002	LITTER REMOVAL	CYC	2.000				2.000		4.000	
	738-6010	CLEANING / SWEEPING (SPOT)	MI	0.500				0.500		1.000	
	1004-6001	TREE PROTECTION	EA					2.000		2.000	
	3076-6003	D-GR HMA TY-B PG64-22 (EXEMPT)	TON	1,154.000		735.000		2,532.000		4,421.000	
	3076-6070	D-GR HMA TY-D PG 76-22 SAC-B (EXEMPT)	TON	529.000		243.000		944.000		1,716.000	
	3081-6007	TOM-C PG76-22 SAC-A	TON	351.000		162.000		627.000		1,140.000	
	3084-6001	BONDING COURSE	GAL	2,398.000		1,660.000		4,108.000		8,166.000	
	6001-6001	PORTABLE CHANGEABLE MESSAGE SIGN	DAY	65.000				65.000		130.000	

Revised 7/21/2022



Estimate & Quantity Sheet

CONTROLLING PROJECT ID 0987-03-014

DISTRICT Austin
HIGHWAY FM 621, OLD BASTROP HWY

COUNTY Hays

CONTROL SECTION JOB				0914-33-085		0987-03-011		0987-03-014		TOTAL EST.	TOTAL FINAL
PROJECT ID				A00132588		A00063383		A00177466			
COUNTY				Hays		Hays		Hays			
HIGHWAY				OLD BASTROP HWY		FM 621		FM 621			
ALT	BID CODE	DESCRIPTION	UNIT	EST.	FINAL	EST.	FINAL	EST.	FINAL		
	6054-6004	ANTENNA (OMNI-DIRECTIONAL)	EA			1.000				1.000	
	6185-6002	TMA (STATIONARY)	DAY	65.000				65.000		130.000	
	6185-6003	TMA (MOBILE OPERATION)	HR	20.000				20.000		40.000	
	6292-6001	RVDS(PRESENCE DETECTION ONLY)	EA			4.000				4.000	
	6292-6002	RVDS(ADVANCE DETECTION ONLY)	EA			2.000				2.000	
	6306-6006	VIVDS TEMPORARY	EA			1.000				1.000	
	6306-6007	VIVDS CABLING	LF			705.000				705.000	
	6306-6019	VIVDS TEMPORARY (REMOVE)	EA			1.000				1.000	
	6306-6020	VIVDS CABLING (REMOVE)	LF			705.000				705.000	
	7251-6001	Subsurface Util Locate (Outside Rdbed)	EA					4.000		4.000	
	7251-6002	Subsurface Util Locate (Within Rdbed)	EA					3.000		3.000	
18		EROSION CONTROL MAINTENANCE: CONTRACTOR FORCE ACCOUNT WORK (PART)	LS	1.000				1.000		2.000	
		SAFETY CONTINGENCY: CONTRACTOR FORCE ACCOUNT WORK (PARTICIPATING)	LS	1.000				1.000		2.000	

Revised 7/21/2022



DISTRICT	COUNTY	CCSJ	SHEET
Austin	Hays	0987-03-014	9C

LOCATION	REMOVAL SUMMARY							
	0100 6002	0104 6009	0105 6030	0496 6004	0496 6006	0496 6007	0496 6050	0550 6003
	PREPARING ROW	REMOVING CONC (RIPRAP)	REMOVING STAB BASE & ASPH PAV (8"-14")	REMOV STR (SET)	REMOV STR (HEADWALL)	REMOV STR (PIPE)	REMOV STR (DRIVEWAY CULVERT)	CHAIN LINK FENCE (REMOVE)
STA	SY	SY	EA	EA	LF	EA	LF	
FM 621 CSJ #0987-03-014	26	12	8,248			96		247
CR 266 CSJ #0914-33-085	21			2	2	110	4	180
PROJECT TOTALS	47	12	8,248	2	2	206	4	427

TCP PHASES	TRAFFIC CONTROL SUMMARY										
	0502 6001	0662 6063	0662 6075	0662 6095	0677 6001	0677 6007	6001 6001	6185 6002	6185 6003	0662 6018	508 6001
	BARRICADES, SIGNS AND TRAFFIC HANDLING	WK ZN PAV MRK REMOV (W) 4" (SLD)	WK ZN PAV MRK REMOV (W) 24" (SLD)	WK ZN PAV MRK REMOV (Y) 4" (SLD)	ELIM EXT PAV MRK & MRKS (4")	ELIM EXT PAV MRK & MRKS (24")	PORTABLE CHANGEABLE MESSAGE SIGN	TMA MOBILE	TMA STATIONARY	WK ZN PAV MRK NON-REMOV (W) (DBL ARW)	CONSTRUCTING DETOURS
	MO	LF	LF	LF	LF	LF	DAY	DAY	HR	EA	SY
CSJ #0987-03-014	2.5						65	65	20		387
SHEET 2 OF 2		1042		525							
CSJ #0914-33-085	2.5						65	65	20		
SHEET 1 OF 2		802		405							
SHEET 2 OF 2		1054	34	501	174	22				1	
PROJECT TOTALS	5	2,898	34	1,431	174	22	130	130	40	1	387

LOCATION	ROADWAY SUMMARY														
	0110 6001	0132 6003	0247 6366	0260 6009	0260 6043	0310 6001	0354 6003	0403 6001	0423 6005	0432 6045	0530 6005	0540 6001	0544 6006	0550 6001	
	EXCAVATION (ROADWAY)	EMBANKMENT (FINAL) (ORD COMP) (TY B)	FL BS (CMP IN PLC) (TY A GR 5) (FNAL POS)	LIME TRT (EXST MATL) (10")	LIME (HYD, COM OR QK) (SLURRY)	PRIME COAT (MULTI OPTION)	PLAN & TEXT ASPH CONC PAV (0" TO 3")	TEMPORARY SPL SHORING	RETAINING WALL SPREAD FOOTING	RIPRAP (MOW STRIP) (4 IN)	DRIVEWAYS (ACP)	MTL W-BEAM GD FEN (TIM POST)	GDRAIL END TRT (INST) (W OOD POST) (TY III)	CHAIN LINK FENCE (INSTALL) (6')	
	CY	CY	CY	SY	TON	GAL	SY	SF	SF	CY	SY	LF	EA	LF	
FM 621. (PLAN & PROFILE) CSJ #0987-03-014															
SHEET 1 OF 10	82	10	58	212	5	40									
SHEET 2 OF 10	2084	118	701	2,578	57	493					173				
SHEET 3 OF 10	1253	705	985	3,250	72	493									
SHEET 4 OF 10	778	2,140	474	1,734	38	493					77			180	
SHEET 5 OF 10	494	856	1,011	3,438	75	493									
SHEET 6 OF 10	162	112	188	638	14	75	213								
Subtotal	4852	3941	3417	11850	261	2089	213			0	250			180	
CR 266. (PLAN & PROFILE) CSJ #0914-33-085															
SHEET 7 OF 10	671	348	472	1,468	32	260	213								
SHEET 8 OF 10	1495	637	661	2,141	48	289		673	404	6	104	80	2	184	
SHEET 9 OF 10	328	1,042	404	1,450	32	208								112	
SHEET 10 OF 10	416	57	464	1,441	32	98	213								
Subtotal	2909	2084	2001	6500	144	855	427			6	104	80	2	296	
FM621/CR 266. (PLAN & PROFILE) CSJ #0987-03-011															
SHEET 4 OF 10		1,000	685	2,510	55	371									
SHEET 9 OF 10		500	155	551	12	84									
Subtotal	0	1,500	840	3,061	67	455	0			0	0	0	0	0	
PROJECT TOTALS	7,762	7,525	6,258	21,411	472	3,399	640	673	404	6	354	80	2	476	

LOCATION	ROADWAY SUMMARY (CONT'D)				
	0552 6002	3076 6003	3076 6070	3081 6007	3084 6001
	WIRE FENCE (TY B)	D-GR HMA TY-B PG64-22	D-GR HMA TY-D PG76-22 SAC-B (EXEMPT)	TOM-C PG 76-22 SAC-A	BOND COURSE
	LF	TON	TON	TON	GAL
FM 621. (PLAN & PROFILE) CSJ #0987-03-014					
SHEET 1 OF 10		50	16	11	80
SHEET 2 OF 10	539	604	199	132	970
SHEET 3 OF 10	588	626	254	168	970
SHEET 4 OF 10	605	413	136	91	970
SHEET 5 OF 10	584	711	270	179	970
SHEET 6 OF 10	160	128	69	46	146
Subtotal	2475	2532	944	627	4108
CR 266. (PLAN & PROFILE) CSJ #0914-33-085					
SHEET 7 OF 10	460	223	127	84	508
SHEET 8 OF 10	561	380	164	109	620
SHEET 9 OF 10	668	327	112	74	830
SHEET 10 OF 10	853	224	126	84	440
Subtotal	2542	1154	529	351	2398
FM621/CR 266. (PLAN & PROFILE) CSJ #0987-03-011					
SHEET 4 OF 10		603	199	133	848
SHEET 9 OF 10		132	44	29	812
Subtotal	0	735	243	162	1660
PROJECT TOTALS	5017	4421	1716	1140	8166

1 ADDENDUM #1 07/21/2022

FM 621 SAFETY IMPROVEMENTS SUMMARY OF QUANTITIES

SCALE: N.T.S.
SHEET 1 OF 3

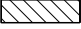

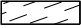


GPS Texas PE Firm Reg. #F-929
4801 Southwest Pkwy, Pkwy 2, Suite 150, Austin, Texas 78735
T +1 512 328 5771 E us@infrastructure@psgroup.com

2021 Texas Department of Transportation

FED. DIV. NO.	FEDERAL AID PROJECT NO.	SHEET NO.
6	STP 2022(343)MM, ETC.	10
STATE	STATE DIST. NO.	COUNTY
TEXAS	AUS	HAYS
CONT.	SECT.	JOB
0987	03	014, ETC. FM 621, ETC.


FILE: \$FILES \$TIMES \$DATES

LEGEND

-  PHASE 1 CONSTRUCTION
-  PHASE 2 CONSTRUCTION
-  PHASE 3 CONSTRUCTION
-  PHASE 4 CONSTRUCTION
-  PHASE 5 CONSTRUCTION

NOTES:

1. ALL TRAFFIC CONTROL DEVICES SHALL BE IN ACCORDANCE WITH THE TEXAS MANUAL ON UNIFORM TRAFFIC CONTROL DEVICES.
2. TRAFFIC CONTROL PLANS SHALL BE IN ACCORDANCE WITH TCP (2-1)-18 AND BC (2)-21, DETAIL "T-INTERSECTION".
3. ACCESS TO PRIVATE PROPERTY IS TO BE PROVIDED AT ALL TIMES.
4. SIDE STREETS SHALL REMAIN OPEN AT ALL TIMES.

 ADDENDUM #1 07/21/2022



7/22/2022

FM 621 SAFETY IMPROVEMENTS TRAFFIC CONTROL PLAN - PHASING

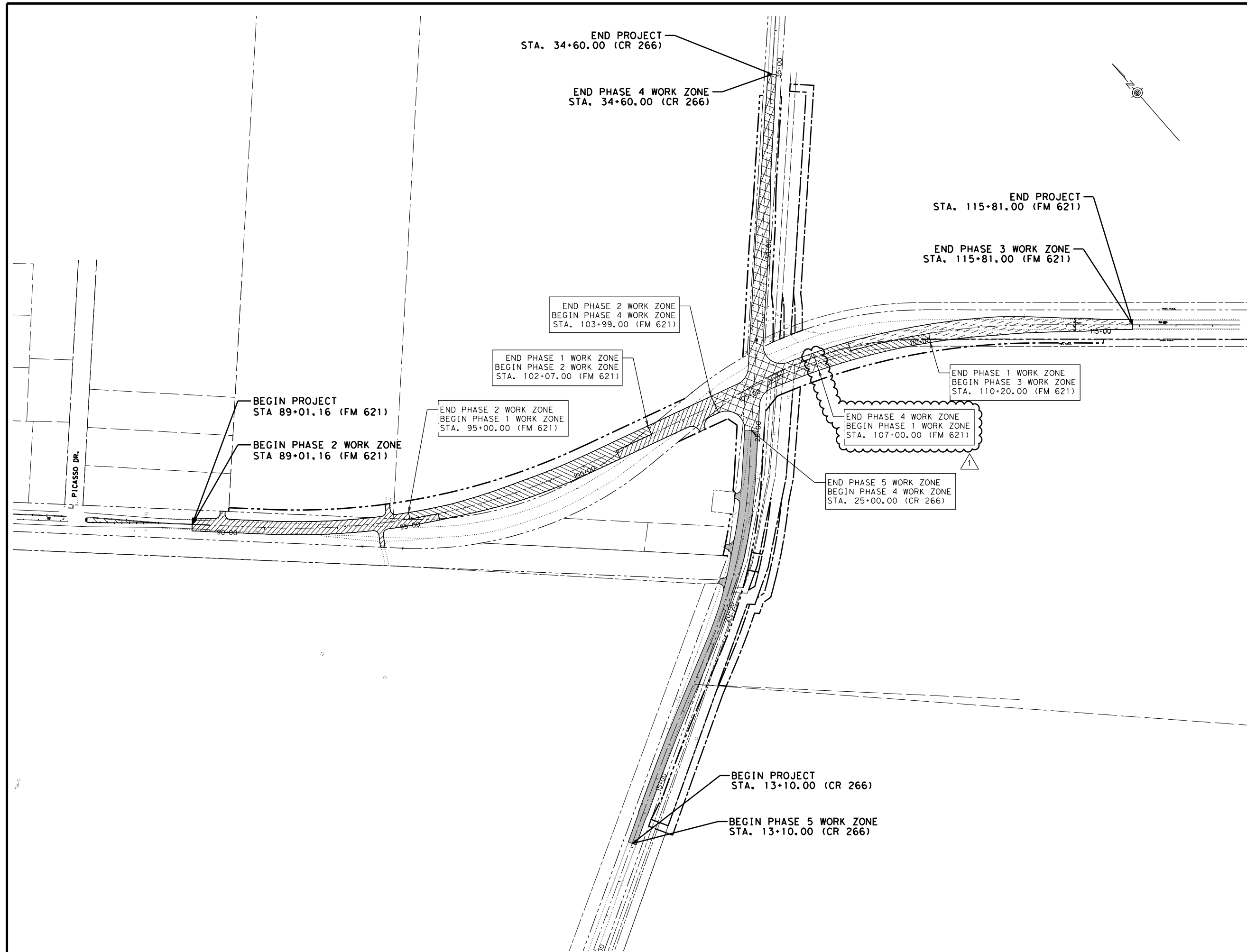
STA. 89+01.16 TO END PROJECT
SCALE: HORIZONTAL 1"=250'

SHEET 1 OF 1

GPS Texas PE Firm Reg. #F-929
4801 Southwest Pkwy, Pkwy 2, Suite 150, Austin, Texas 78735
T +1 512 328 5771 E us@infrastructure@gpsgroup.com



FED. RD. DIV. NO.	FEDERAL AID PROJECT NO.	SHEET NO.	
6	STP 2022(343)MM, ETC.	18	
STATE	STATE DIST. NO.	COUNTY	
TEXAS	AUS	HAYS	
CONT.	SECT.	JOB	HIGHWAY NO.
0987	03	014, ETC.	FM 621, ETC.



FILE: \$FILES \$TIMES \$DATES

TRAFFIC CONTROL PLAN NARRATIVE

GENERAL

1. INSTALL CONSTRUCTION ZONE ENTRANCE AND EXITS (OR AS PART OF MOBILIZATION).
2. PREPARE R.O.W. IN PROJECT AREA
3. INITIATE SW3P AS PART OF EVERY PHASE.
4. VERIFY ALL EXISTING UTILITIES WITHIN WORK ZONE OF EACH PHASE.
5. ALWAYS MAINTAIN ALL WEATHER PAVED ACCESS TO DRIVEWAYS DURING CONSTRUCTION PERIOD. MAINTAIN TWO-WAY TRAFFIC AT INTERSECTING STREETS.
6. ALWAYS ENSURE POSITIVE DRAINAGE DURING CONSTRUCTION PERIOD.

PHASE 1

1. INSTALL PHASE 1 TRAFFIC CONTROL SIGNS, CHANNELIZING DEVICES AND BARRICADES. UTILIZE APPLICABLE TXDOT STANDARD SHEETS.
2. CONSTRUCT ALL PROPOSED FM 621 FACILITIES WITHIN PHASE 1 WORK LIMIT.

PHASE 2

1. INSTALL PHASE 2 TRAFFIC CONTROL SIGNS, CHANNELIZING DEVICES AND BARRICADES TO SHUT DOWN THE NORTH LEG OF FM 621 AT THE CR 266 INTERSECTION. UTILIZE APPLICABLE TXDOT TCP (2-1B)-18 STANDARD SHEETS.
2. ESTABLISH DETOUR FOR FM 621. SEE PHASE 2 DETOUR PLAN SHEET FOR DETAILS.
3. REMOVE EXISTING FM 621 FACILITIES WITHIN PHASE 2 WORK LIMITS.
4. CONSTRUCT ALL PROPOSED FM 621 FACILITIES WITHIN PHASE 2 WORK LIMIT.
5. THE THREE SEGMENTS OF NORTH LEG CONSTRUCTED TO THIS POINT WILL BE STRIPPED AS FOLLOWS. ON THE FIRST SEGMENT, PLACE STRIPING, SIGNAGE, AND MARKINGS WITHIN WORK ZONE THAT MATCHES PROPOSED FINAL STRIPING PLANS. ON THE SECOND AND THIRD SEGMENTS, PLACE STRIPING, SIGNAGE, AND MARKINGS WITHIN WORK ZONE TO MATCH STRIPING PLAN SHOWN ON PHASE 3 WORKZONE PLAN.

1. INSTALL TEMPORARY SIGNAL
 7. INSTALL TEMPORARY PAVEMENT. SEE TCP PHASE 3 SHEET FOR DETAILS.

PHASE 3

1. INSTALL PHASE 3 TRAFFIC CONTROL SIGNS, CHANNELIZING DEVICES AND BARRICADES TO SHUT DOWN THE SOUTH LEG OF FM 621 AT THE CR 266 INTERSECTION. UTILIZE APPLICABLE TXDOT TCP (2-1B)-18 STANDARD SHEETS.
2. SOUTHBOUND FM 621 TO BE CLOSED PAST CR 266 INTERSECTION. ESTABLISH DETOUR FOR FM 621 SOUTH BOUND TRAFFIC. SEE PHASE 3 DETOUR PLAN SHEET FOR DETAILS.
3. REMOVE EXISTING FM 621 FACILITIES WITHIN PHASE 3 WORK LIMITS.
4. CONSTRUCT ALL PROPOSED FM 621 FACILITIES WITHIN PHASE 3 WORK LIMIT. TIE INTO PREVIOUSLY CONSTRUCTION PAVEMENT FROM PHASE 1 AND PHASE 2 JUST NORTHWEST OF INTERSECTION.
5. PLACE STRIPING, SIGNAGE, AND MARKINGS WITHIN WORK ZONE THAT MATCHES PROPOSED FINAL STRIPING PLANS.
6. USE TEMPORARY SIGNAL.

1. PHASE 4 (CAN NOT BEGIN UNTIL 5/1/2023)

1. INSTALL PHASE 4 TRAFFIC CONTROL SIGNS, CHANNELIZING DEVICES AND BARRICADES TO SHUT DOWN THE INTERSECTION OF FM 621 AND CR 266. UTILIZE APPLICABLE TXDOT TCP (2-1B)-18 STANDARD SHEETS.
2. ESTABLISH DETOUR FOR CR 266 AND FM 621 (INTERSECTION WILL BE CLOSED) SEE PHASE 4 DETOUR PLAN SHEET FOR DETAILS.
3. REMOVE EXISTING CR 266 AND FM 621 FACILITIES WITHIN PHASE 4 WORK LIMITS.
4. CONSTRUCT ALL PROPOSED CR 266 AND FM 621 FACILITIES WITHIN PHASE 4 WORK LIMIT.
5. PLACE STRIPING, SIGNAGE, AND MARKINGS WITHIN WORK ZONE THAT MATCHES PROPOSED FINAL STRIPING PLANS.
6. INSTALL PROPOSED FINAL TRAFFIC SIGNAL.

PHASE 5

1. INSTALL PHASE 5 TRAFFIC CONTROL SIGNS, CHANNELIZING DEVICES AND BARRICADES TO SHUT DOWN THE EAST LEG OF CR 266 AT THE FM 621 INTERSECTION. UTILIZE APPLICABLE TXDOT TCP (2-1B)-18 STANDARD SHEETS.
2. ESTABLISH DETOUR FOR CR 266 WEST BOUND TRAFFIC. SEE PHASE 5 DETOUR PLAN SHEET FOR DETAILS.
3. REMOVE EXISTING CR 266 FACILITIES WITHIN PHASE 5 WORK LIMITS.
4. CONSTRUCT ALL PROPOSED CR 266 FACILITIES WITHIN PHASE 5 WORK LIMIT.
5. PLACE STRIPING, SIGNAGE, AND MARKINGS WITHIN WORK ZONE THAT MATCHES PROPOSED FINAL STRIPING PLANS.

PHASE 6

1. INSTALL PERMANENT STRIPING IN MOBILE OPERATIONS.

NOTES:

THE CONTRACTOR IS NOT ALLOWED TO WORK IN AREAS WITH ONGOING ROW ACQUISITION OR UTILITY RELOCATION UNTIL THOSE AREAS ARE CLEAR.

1. ADDENDUM #1 07/21/2022



J. Easterling 7/22/2022

FM 621 SAFETY IMPROVEMENTS TRAFFIC CONTROL PLAN - NARRATIVE

SCALE: N.T.S.

SHEET 1 OF 1




GPS Texas PE Firm Reg. #F-929
 4801 Southwest Pkwy, Pkwy 2, Suite 150, Austin, Texas 78735
 T +1 512 328 5771 E us@infrastructure@psgroup.com

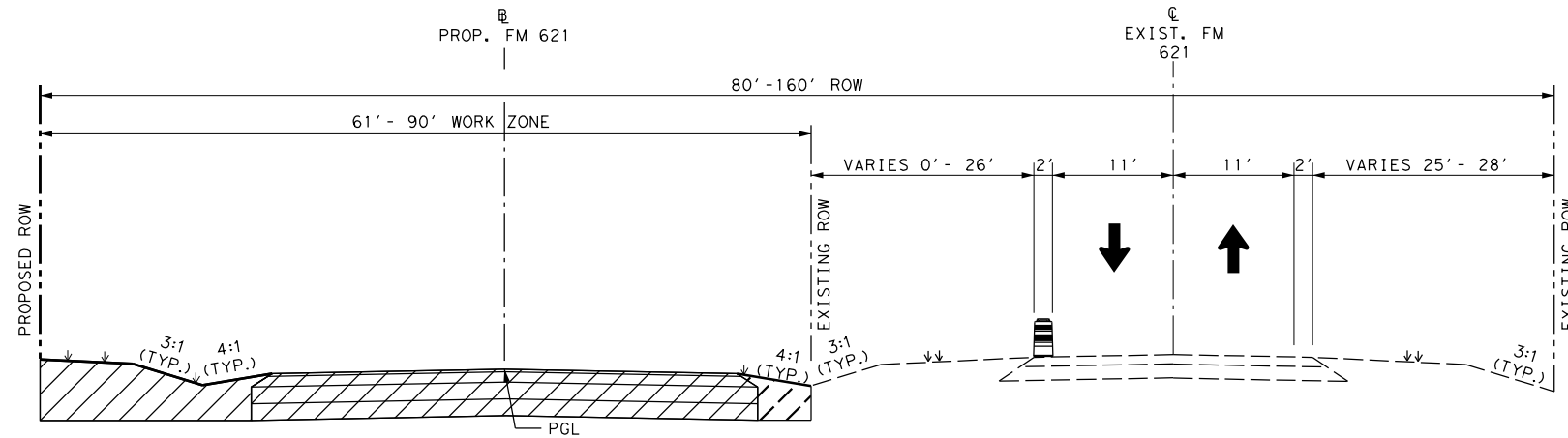


FED. DIV. NO.	FEDERAL AID PROJECT NO.		SHEET NO.
6	STP 2022(343)MM, ETC.		19
STATE	STATE DIST. NO.	COUNTY	
TEXAS	AUS	HAYS	
CONT.	SECT.	JOB	HIGHWAY NO.
0987	03	014, ETC.	FM 621, ETC.

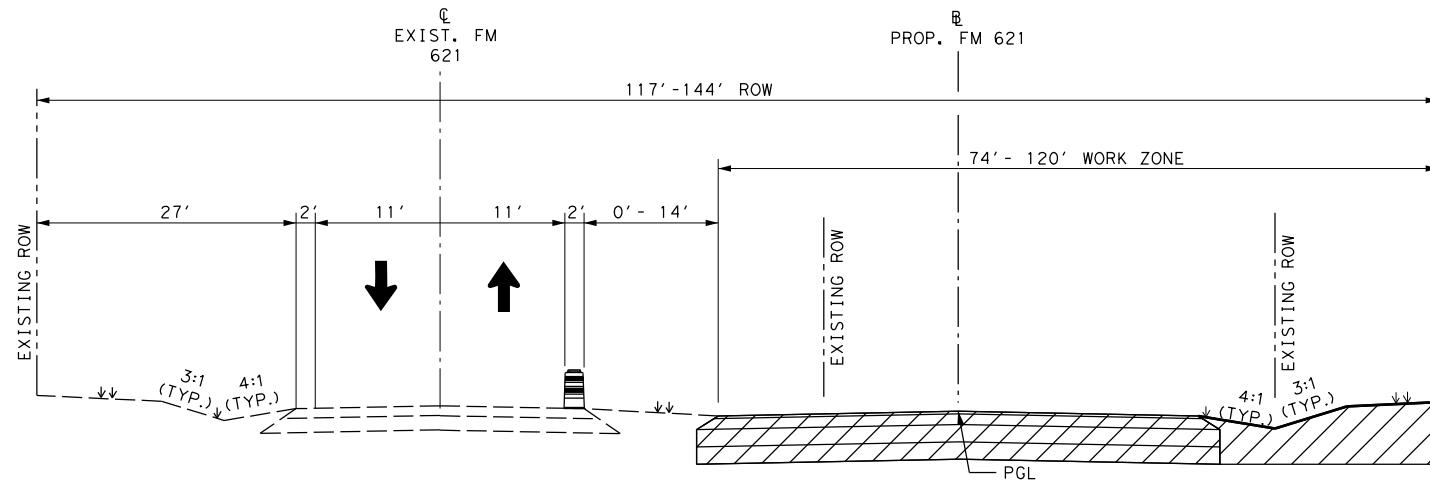
FILE: \$FILES \$TIMES
 DATE: \$DATES

LEGEND

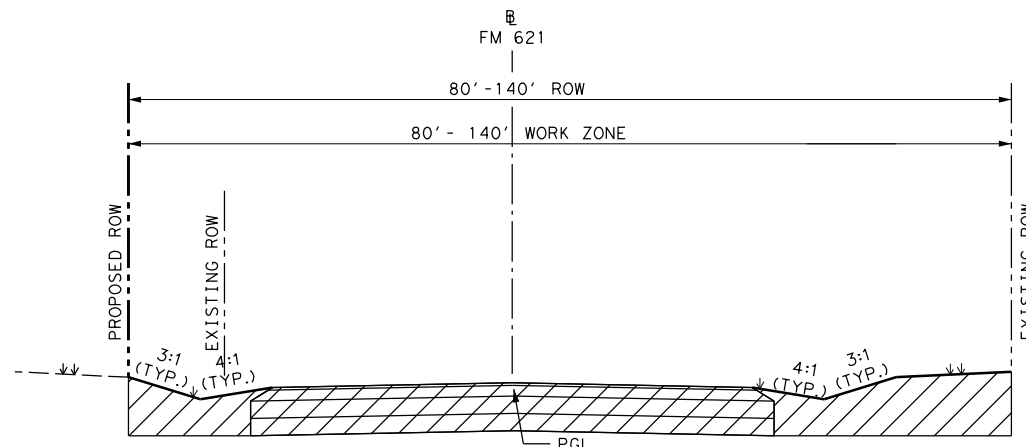
-  WORK ZONE
-  REMOVE EXIST. PAVEMENT
-  DRUM



FM 621
PHASE 1
 STA. 95+00.00 - STA. 102+07.00

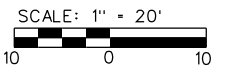


FM 621
PHASE 1
 STA. 107+00.00 - STA. 110+20.00



FM 621
PHASE 2
 STA. 89+01.16 - STA. 95+00.00
 STA. 101+00.00 - STA. 104+00.00

ADDENDUM #1 07/21/2022



L. Easterling 7/22/2022

FM 621 SAFETY IMPROVEMENTS TCP TYPICAL SECTIONS

SHEET 1 OF 2

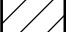

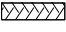

rps Texas PE Firm Reg. #F-929
 4801 Southwest Pkwy, Pkwy 2, Suite 150, Austin, Texas 78735
 T +1 512 328 5771 E us@infrastructure@rpsgroup.com

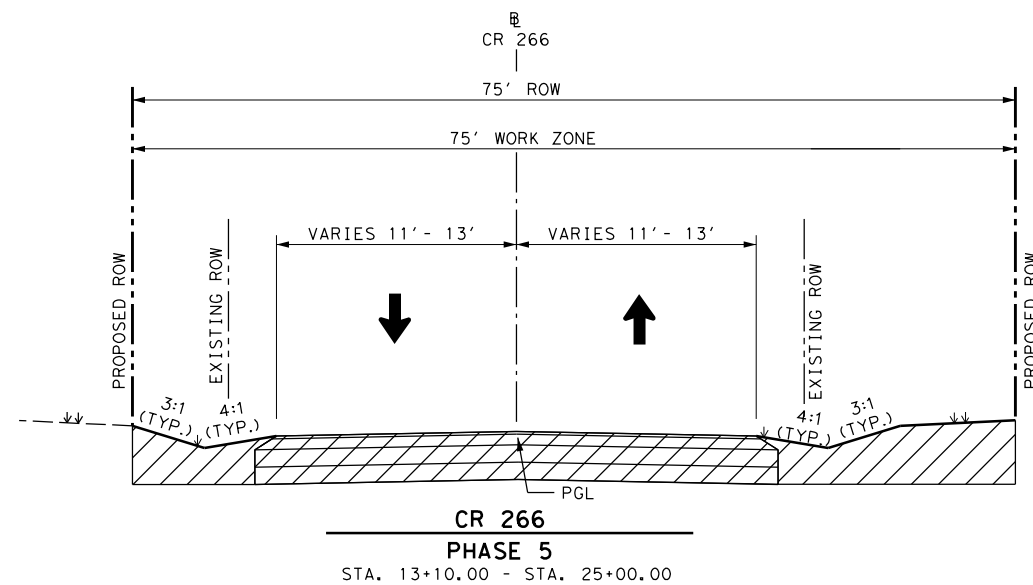
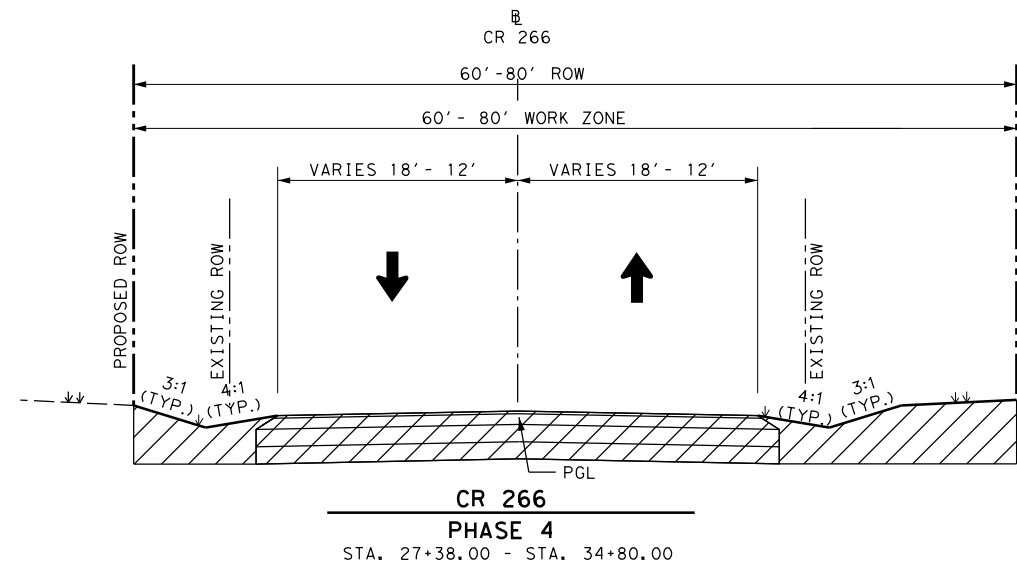
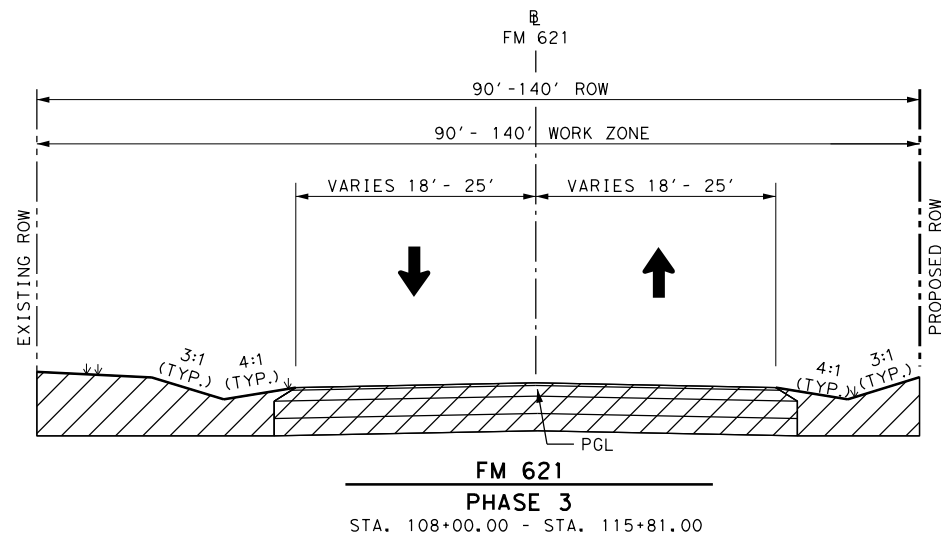
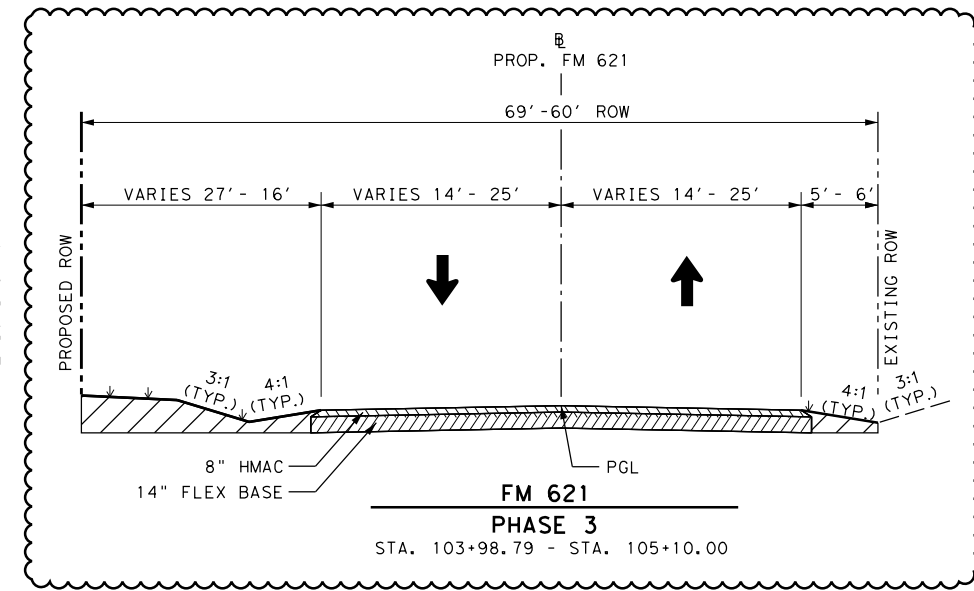
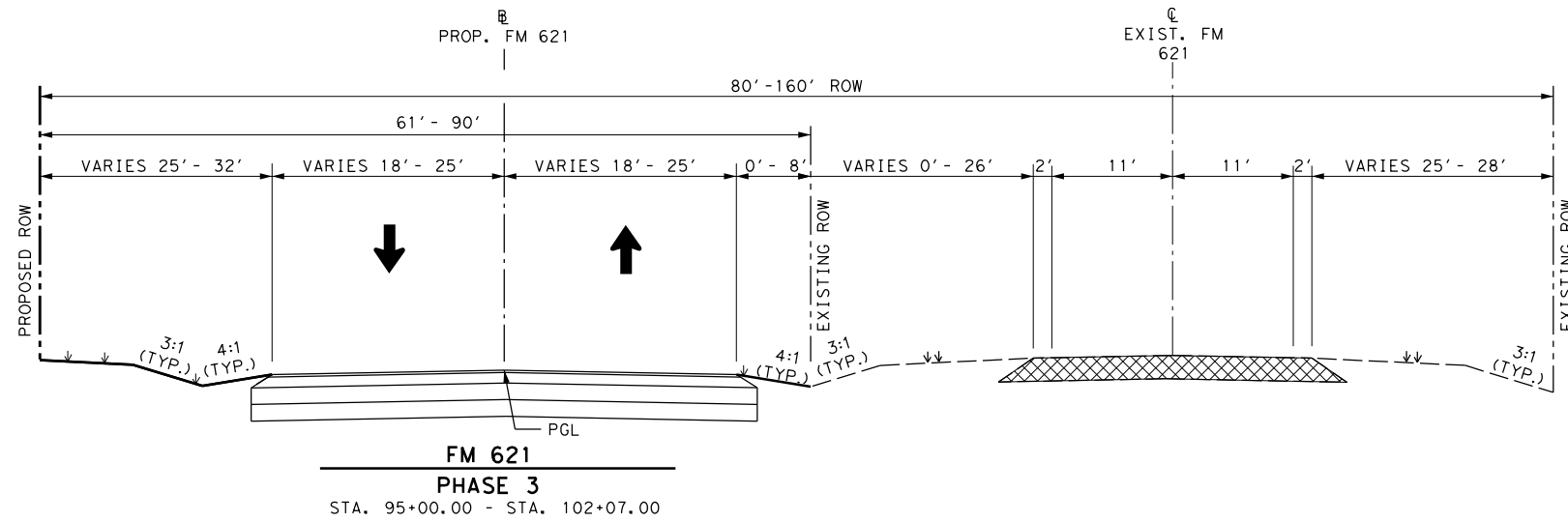
2021 Texas Department of Transportation

FED. DIV. NO.	FEDERAL AID PROJECT NO.	SHEET NO.	
6	STP 2022(343)MM, ETC.	21	
STATE	STATE DIST. NO.	COUNTY	
TEXAS	AUS	HAYS	
CONT.	SECT.	JOB	HIGHWAY NO.
0987	03	014, ETC.	FM 621, ETC.

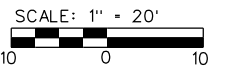
FILE: \$FILES DATE: \$DATES \$TIMES

LEGEND

-  WORK ZONE
-  REMOVE EXIST. PAVEMENT
-  TEMPORARY PAVEMENT
-  DRUM



ADDENDUM #1 07/21/2022



L. Easterling 7/22/2022

FM 621 SAFETY IMPROVEMENTS TCP TYPICAL SECTIONS

SHEET 2 OF 2

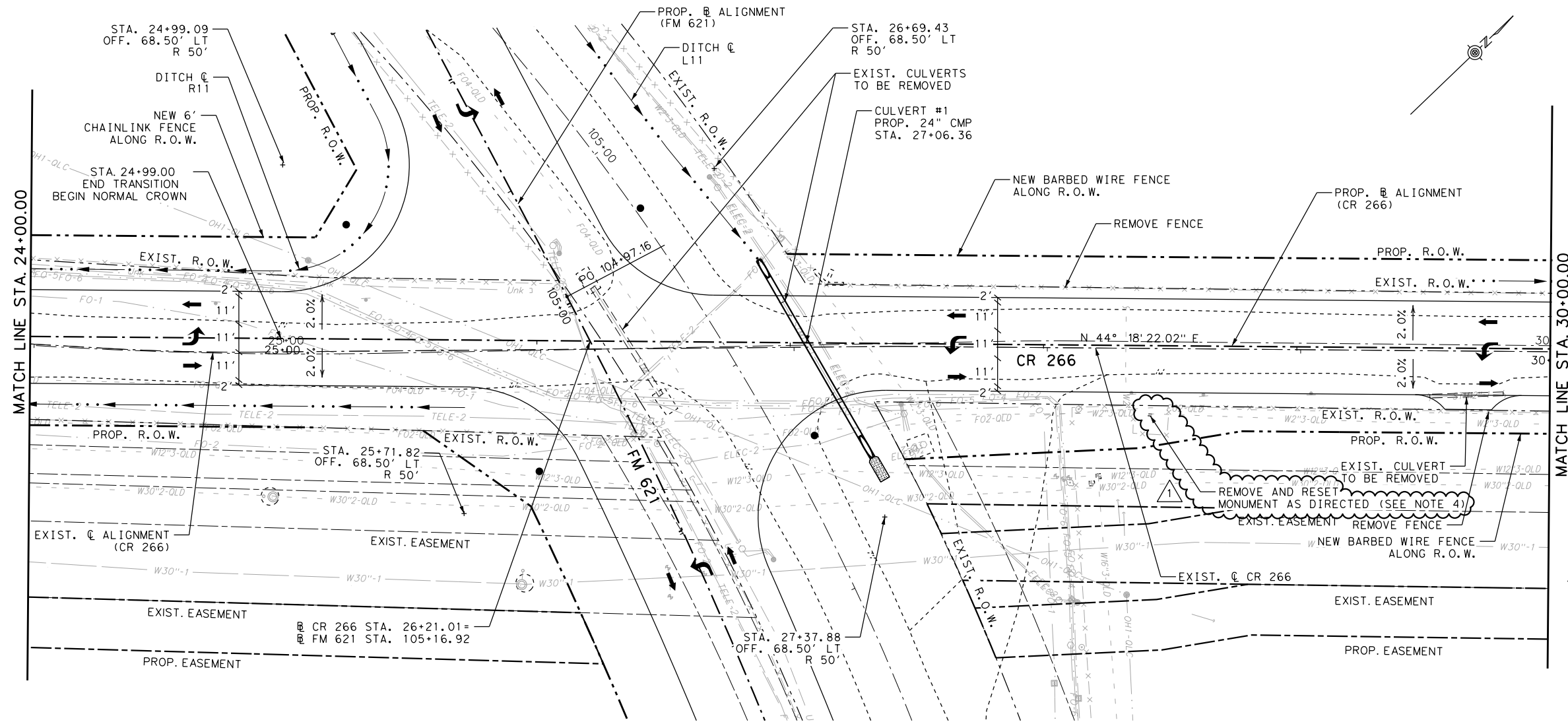
GPS Texas PE Firm Reg. #F-929
4801 Southwest Pkwy, Pkwy 2, Suite 150, Austin, Texas 78735
T +1 512 328 5771 E us@infrastructure@psgroup.com

2021 Texas Department of Transportation

FED. DIV. NO.	FEDERAL AID PROJECT NO.	SHEET NO.
6	STP 2022(343)MM, ETC.	22
STATE	STATE DIST. NO.	COUNTY
TEXAS	AUS	HAYS
CONT.	SECT.	JOB
0987	03	014, ETC. FM 621, ETC.

FILE: \$FILES
DATE: \$DATES
\$TIMES

FILE: \\Projects\AUS-SP\007649.FM 621 Safety Improvements\07.00 CADD\FM 621 - Phase 2\04-1111 Roadway Details\007649 Roadway Plan and Profile (SHEET 9 OF 10).dgn
DATE: 7/25/2022

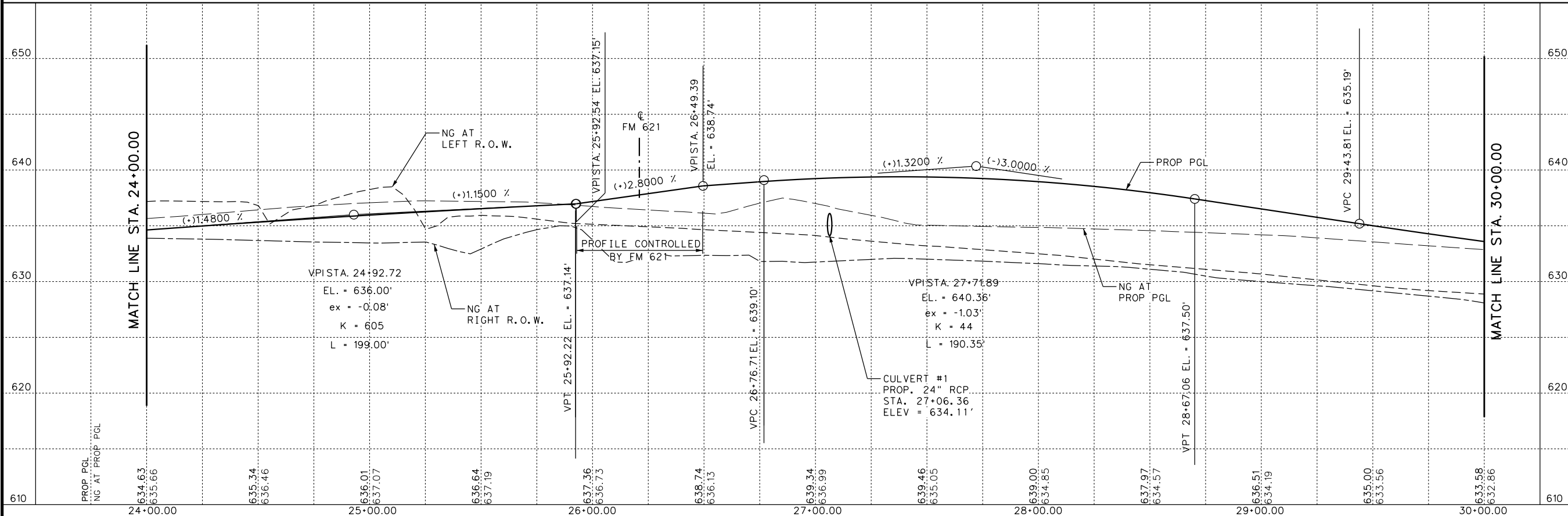


LEGEND

- EXIST. R.O.W.
- PROP. R.O.W.
- EXIST. EASEMENT
- PROP. EASEMENT
- PROPERTY LINE
- EXIST. E.O.P.
- PROP. E.O.P.
- SAWCUT LINE
- ← TRAFFIC FLOW
- XXXXXX HORIZ. CURVE NO.
- DRIVEWAY NO.
- MATCH EXISTING CROSS SLOPE

- ### NOTES:
- STATIONS, OFFSETS, AND RADII ARE MEASURED FROM EDGE OF PAVEMENT UNLESS OTHERWISE NOTED.
 - FOR SURVEY POINT INFORMATION, SEE HORIZONTAL ALIGNMENT DATA & SUPERELEVATION SHEET.
 - CONTRACTOR IS RESPONSIBLE FOR VERIFYING ALL EXISTING UTILITIES BEFORE BEGINNING ANY TYPE OF WORK.
 - MONUMENT WILL BE PLACED ON A 4'X4' CONCRETE RIPRAP PAID FOR WITH CONTRACT ITEMS. PAYMENT TO REMOVE, HANDLING, TRANSPORT AND REINSTALL THE MONUMENT WILL BE MADE VIA FORCE ACCOUNT.

ADDENDUM #1 07/21/2022



7/22/2022

FM 621 SAFETY IMPROVEMENTS ROADWAY PLAN AND PROFILE

CR 266 STA. 23+00 TO STA. 29+00
SCALE: HORIZONTAL 1"=50'
VERTICAL 1"=10'

SHEET 9 OF 10

4801 Southwest Pkwy, Pkwy 2, Suite 150, Austin, Texas 78735
T +1 512 328 5771 E usinfrastructure@fpsgroup.com

FED. RD. DIV. NO.	FEDERAL AID PROJECT NO.	SHEET NO.
6	STP 2022(343)MM, ETC.	53
STATE	STATE DIST. NO.	COUNTY
TEXAS	AUS	HAYS
CONT.	SECT.	JOB
0987	03	014, ETC. FM 621, ETC.

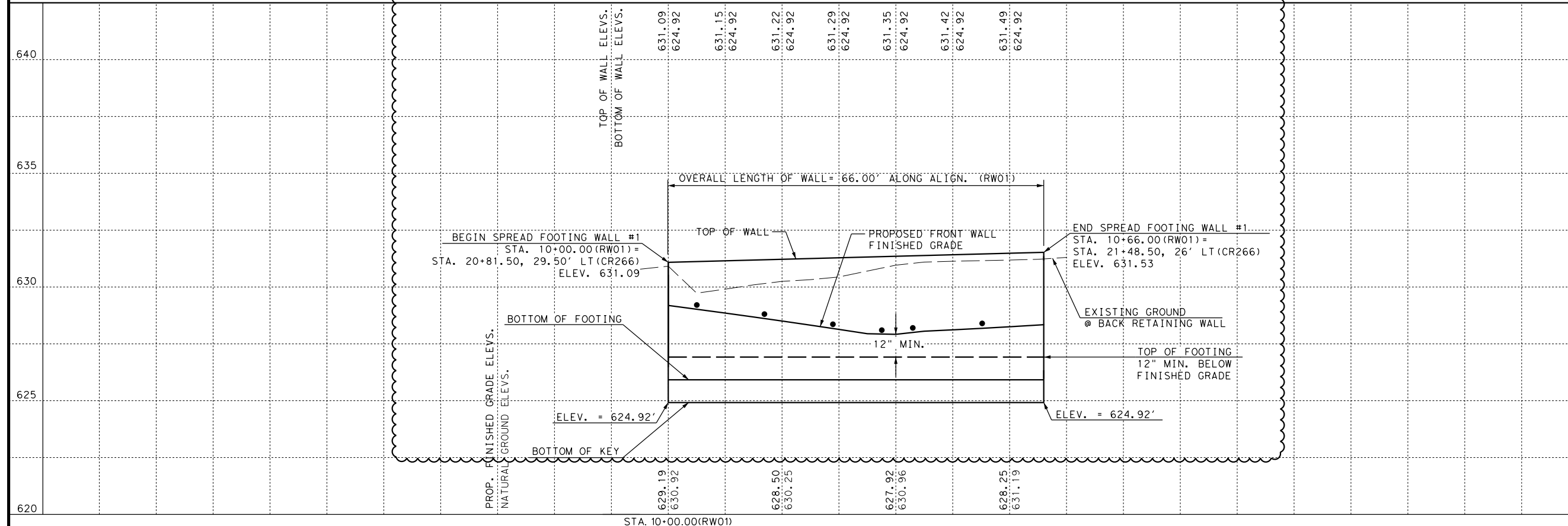
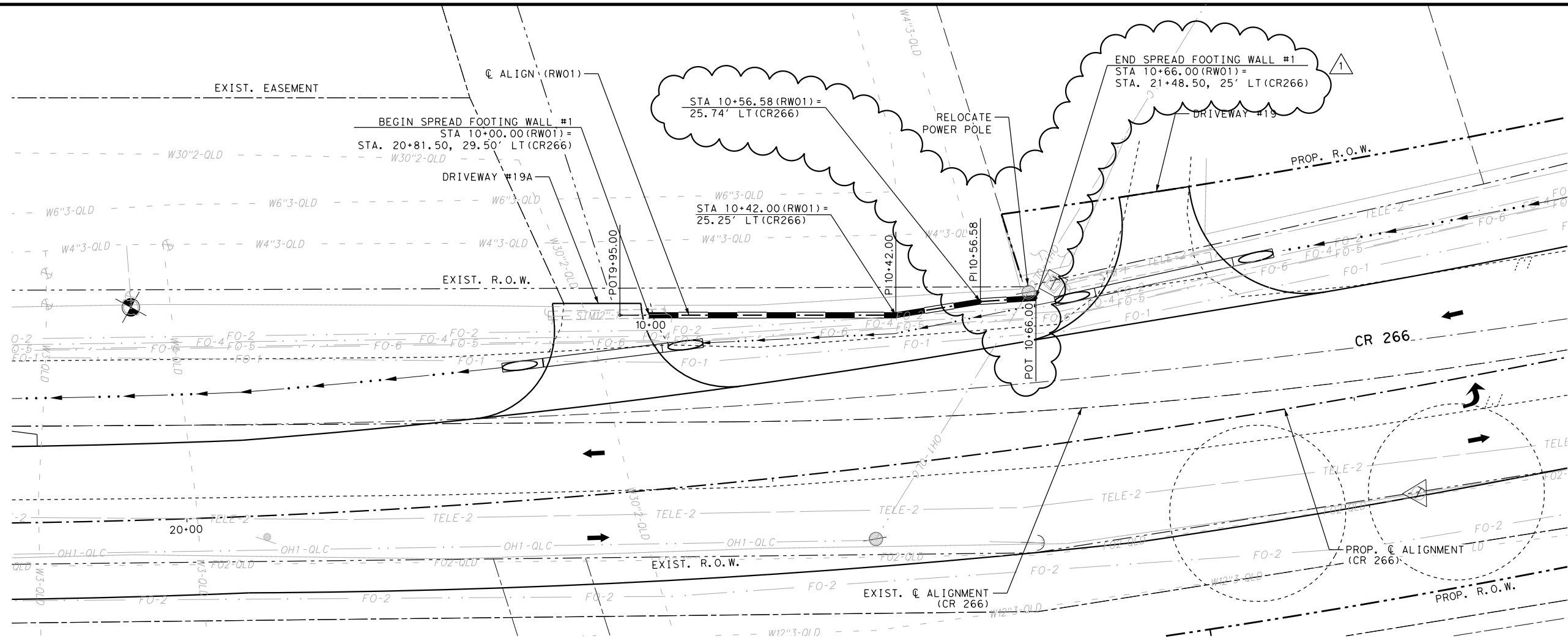
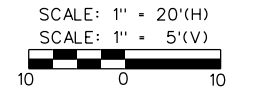
FILE: P:\Projects\AUS-SP\007649.FM 621 Safety Improvements\07.00 CADD\FM 621 - Phase 2\05-IV Wall 1 Detail\007649 RETAINING WALL PLAN AND PROFILE (SHEET 1 OF 2).dgn
 DATE: 7/25/2022

LEGEND

- EXIST. R.O.W.
- - - PROP. R.O.W.
- PROPERTY LINE
- EXIST. E.O.P.
- PROPOSED E.O.P.
- DITCH &
- RETAINING WALL
- TRAFFIC FLOW
- WEEP HOLE

- NOTES:**
1. STATIONS, OFFSETS, AND RADII ARE MEASURED FROM EDGE OF PAVEMENT UNLESS OTHERWISE NOTED.
 2. FOR SURVEY POINT INFORMATION, SEE HORIZONTAL ALIGNMENT DATA & SUPERELEVATION SHEET.
 3. CONTRACTOR IS RESPONSIBLE FOR VERIFYING ALL EXISTING UTILITIES BEFORE BEGINNING ANY TYPE OF WORK.
 4. ALL DRIVEWAYS TO REMAIN OPEN AT ALL TIMES.
 5. CONTRACTOR TO MAINTAIN EXISTING ROADWAY PROFILE.
 6. CONSTRUCT WALL PER TXDOT STANDARD RETAINING WALLS RW 1 (L)A
 7. WEEP HOLE TO BE PLACED 3" ABOVE PROPOSED FINISHED GRADE.

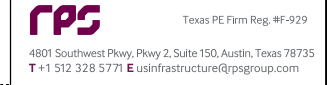
ADDENDUM #1 07/21/2022



FM 621 SAFETY IMPROVEMENTS RETAINING WALL PLAN & PROFILE
 RETAINING WALL #1

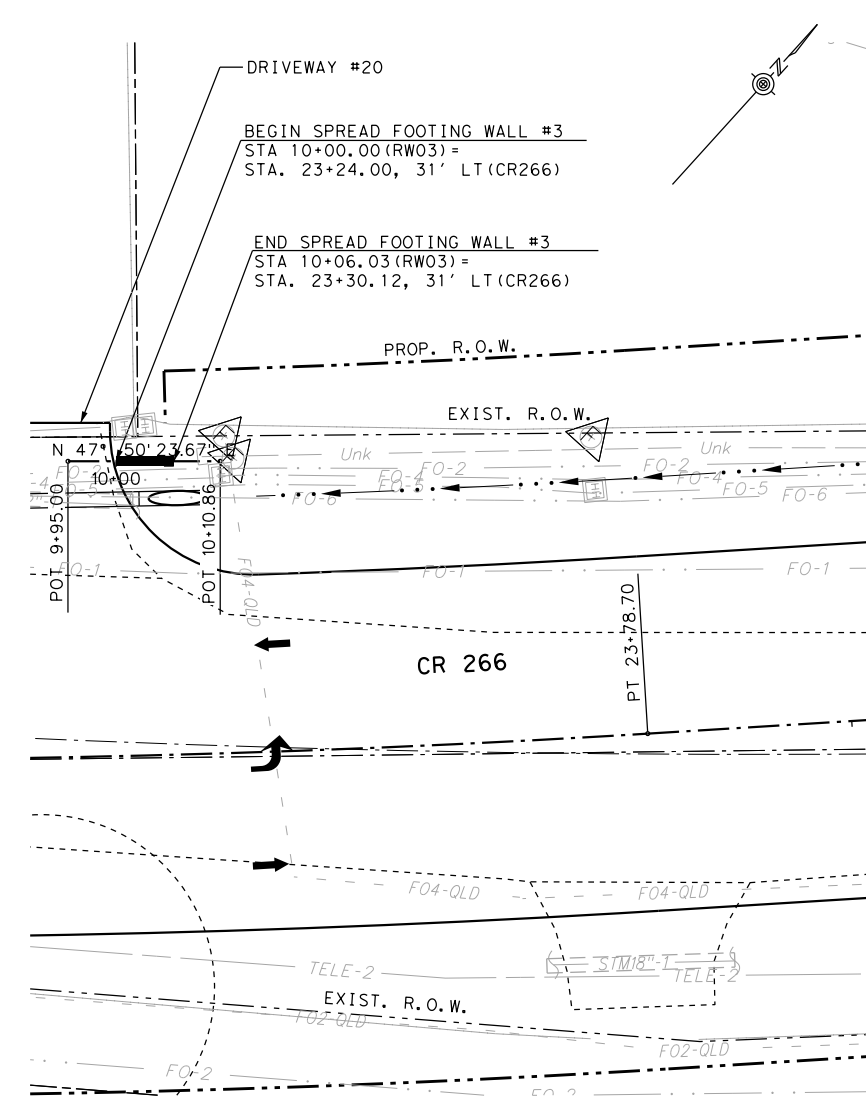
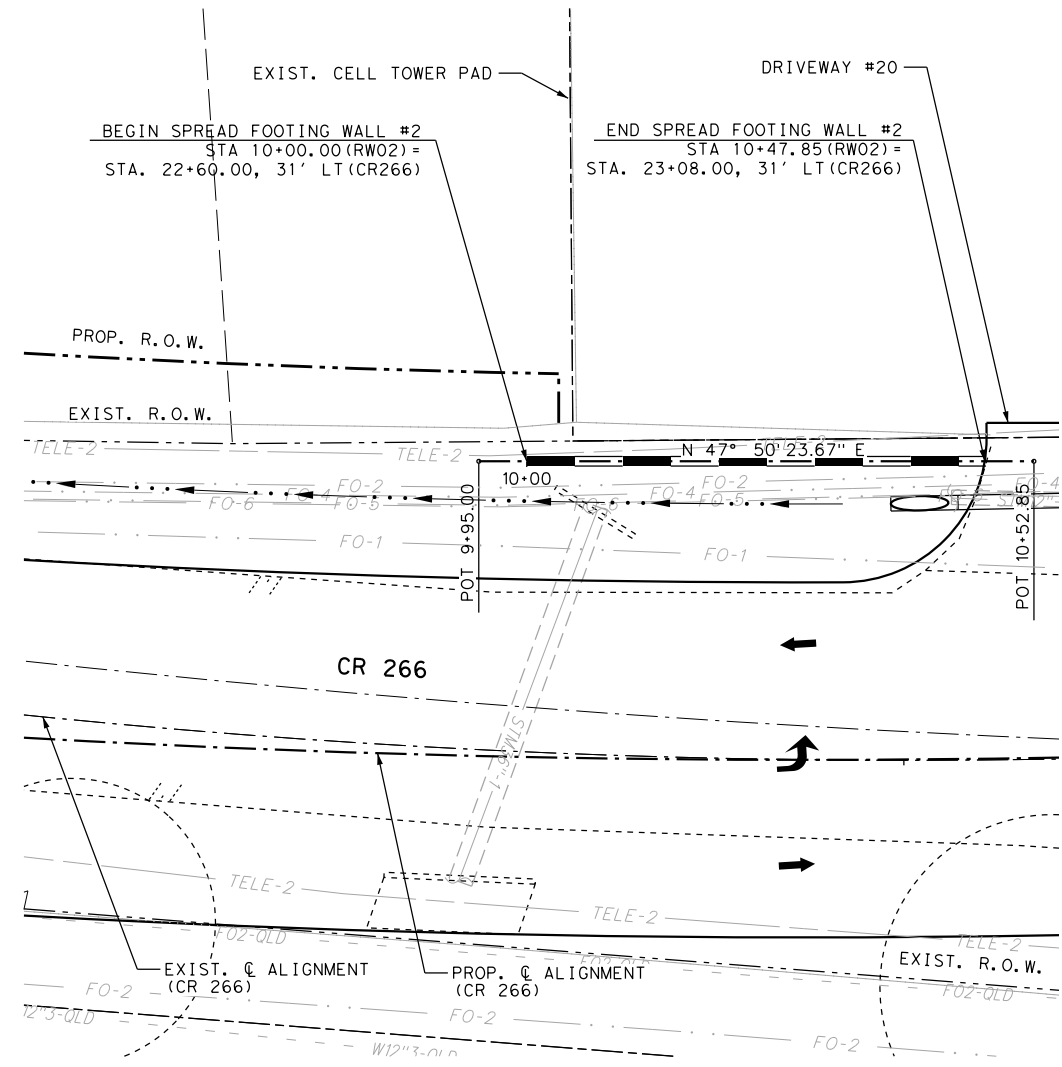
SCALE: HORIZONTAL 1"=20'
 VERTICAL 1"= 5'

SHEET 1 OF 2



2021 Texas Department of Transportation	
FED. DIV. NO.	FEDERAL AID PROJECT NO.
6	STP 2022(343)MM, ETC.
STATE	COUNTY
TEXAS	HAYS
CONT.	SECT.
0987	03
JOB	HIGHWAY NO.
014, ETC.	FM 621, ETC.

FILE: Projects\AUS-SP\007649.FM 621 Safety Improvements\07.00 CADD\FM 621 - Phase 2\05-1V Wall 1 Det\1s\007649 RETAINING WALL PLAN AND PROFILE (SHEET 2 OF 2).dgn
DATE: 7/25/2022



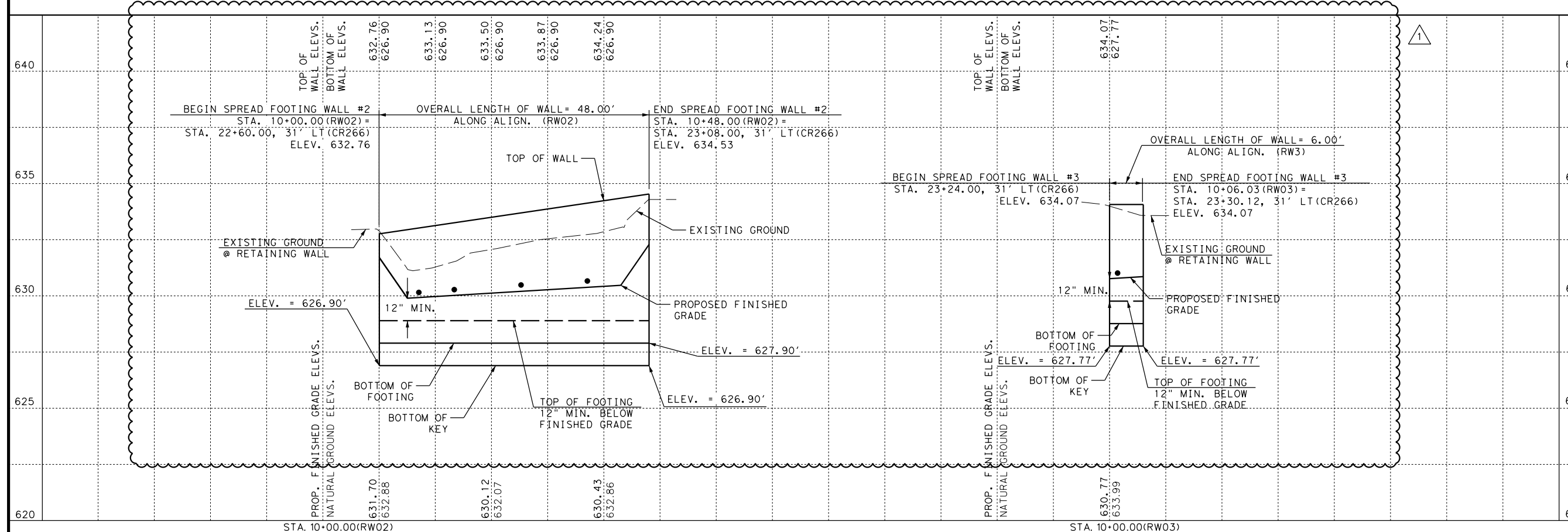
LEGEND

- EXIST. R.O.W.
- - - PROP. R.O.W.
- PROPERTY LINE
- EXIST. E.O.P.
- PROPOSED E.O.P.
- ← DITCH @
- █ RETAINING WALL
- ← TRAFFIC FLOW
- WEEP HOLE

- NOTES:**
1. STATIONS, OFFSETS, AND RADII ARE MEASURED FROM EDGE OF PAVEMENT UNLESS OTHERWISE NOTED.
 2. FOR SURVEY POINT INFORMATION, SEE HORIZONTAL ALIGNMENT DATA & SUPERELEVATION SHEET.
 3. CONTRACTOR IS RESPONSIBLE FOR VERIFYING ALL EXISTING UTILITIES BEFORE BEGINNING ANY TYPE OF WORK.
 4. ALL DRIVEWAYS TO REMAIN OPEN AT ALL TIMES.
 5. CONTRACTOR TO MAINTAIN EXISTING ROADWAY PROFILE.
 6. CONSTRUCT WALL PER TXDOT STANDARD RETAINING WALLS RW 1(L)A
 7. WEEP HOLE TO BE PLACED 3" ABOVE PROPOSED FINISHED GRADE.

ADDENDUM #1 07/21/2022

SCALE: 1" = 20'(H)
SCALE: 1" = 5'(V)

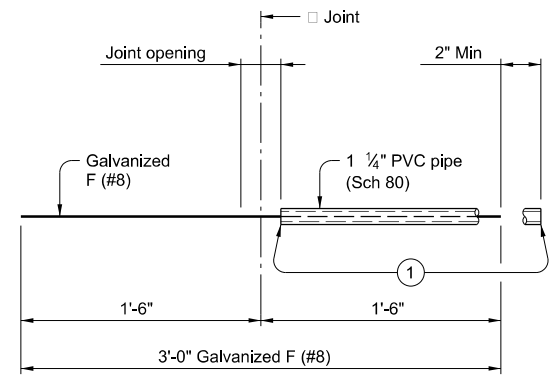


FM 621 SAFETY IMPROVEMENTS RETAINING WALL PLAN & PROFILE
RETAINING WALLS #2 & #3
SCALE: HORIZONTAL 1"=20'
VERTICAL 1"= 5'
SHEET 2 OF 2

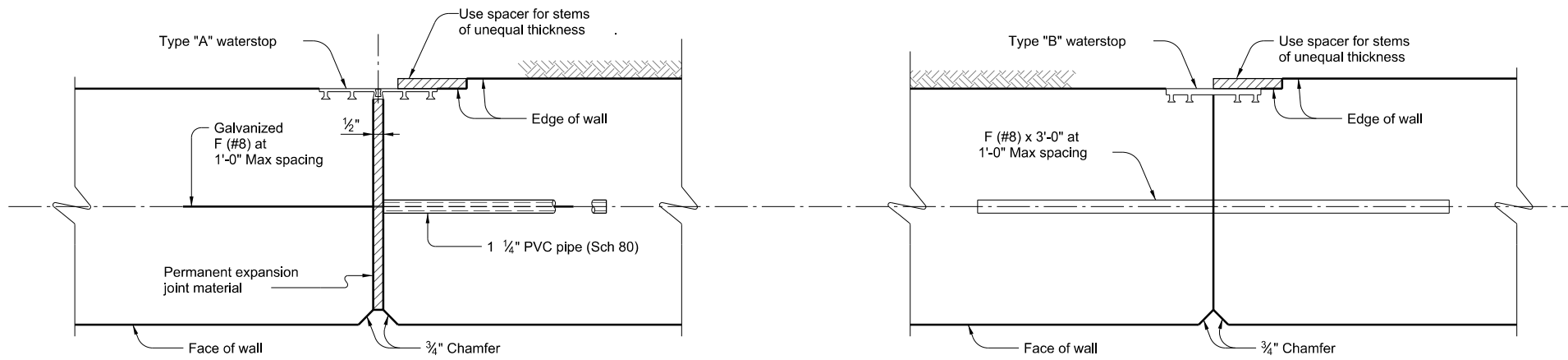
rps Texas PE Firm Reg. #F-929
4801 Southwest Pkwy, Pkwy 2, Suite 150, Austin, Texas 78735
T +1 512 328 5771 E us@infrastructure@rpsgroup.com

FED. DIV. NO.	FEDERAL AID PROJECT NO.	SHEET NO.
6	STP 2022(343)MM, ETC.	67
STATE	COUNTY	
TEXAS	AUS	HAYS
CONT.	SECT.	JOB
0987	03	014, ETC. FM 621, ETC.

DISCLAIMER: The use of this standard is governed by the "Texas Engineering Practice Act". No warranty of any kind is made by TxDOT for any purpose whatsoever. TxDOT assumes no responsibility for the conversion of this standard to other formats or for incorrect results or damages resulting from its use.

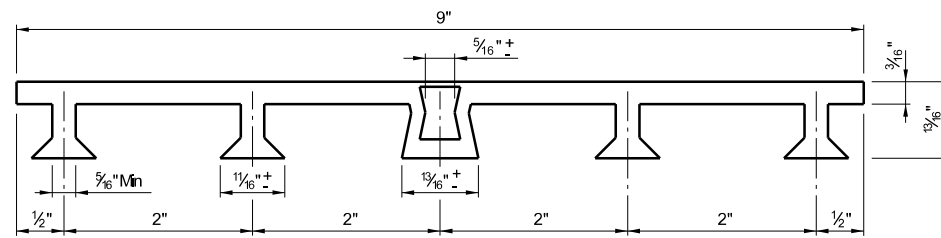


BAR F (#8) ASSEMBLY DETAIL



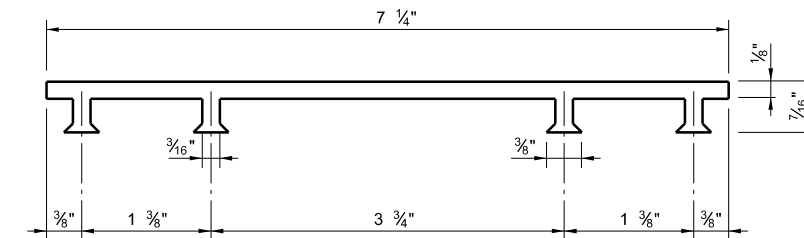
EXPANSION JOINT

CONSTRUCTION JOINT



PVC WATERSTOP TYPE "A"

Note: Dimensions and shapes may vary slightly depending on manufacturer.



PVC WATERSTOP TYPE "B"

- ① Tape ends of 1 1/4" PVC Schedule 80 to prevent concrete or mortar from seeping in.
- ② Class C unreinforced concrete when difference in top of footing elevations is less than 2 feet. Omit when Dowel Bars F can be placed between adjacent footings with 4-inch cover top and bottom. Footing elevation difference not to exceed 4 feet.
- ③ Underdrain pipe and filter material to be in accordance with Item 556, "Pipe Underdrains."

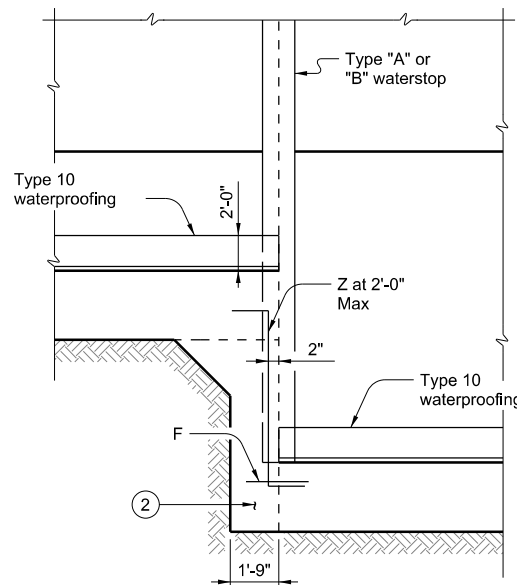
MATERIAL NOTES:

Provide Class C concrete ($f'c=3,600$ psi.)
Provide Grade 60 reinforcing steel.

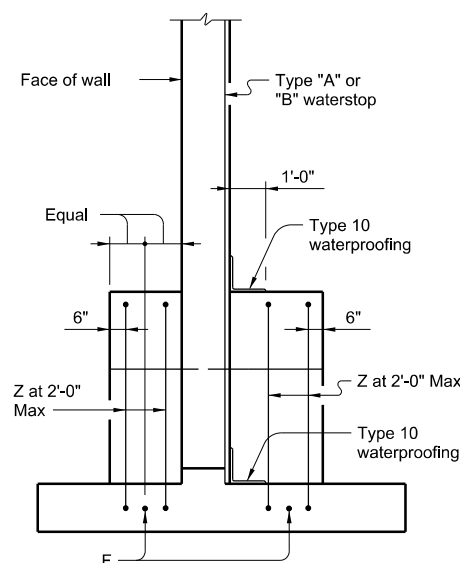
GENERAL NOTES:

Designed according to AASHTO LRFD Bridge Design Specifications.
Walls are designed assuming unit weight of soil = 120 pcf and a friction angle = 30 degrees for foundation and retained soil.
The undisturbed or compacted soil depth in front of walls must not measure less than $K_d + Ft + 1$ foot as measured upwards from bottom of key.
Retaining walls are detailed to be placed on grades up to 10% with level footing, with no changes in reinforcing steel. Steeper grades can be accommodated by shortening Bars A and Bars B and increasing the length of legs of Bars U by the same amount. No change in quantities will be required.
Retaining walls may be placed on horizontal curves by adjusting lengths of Bars T and Bars H in the footing. Minor revisions to concrete quantities may be required as a result.

Cover dimensions are clear dimensions, unless noted otherwise. Reinforcing bar dimensions shown are out-to-out of bar.

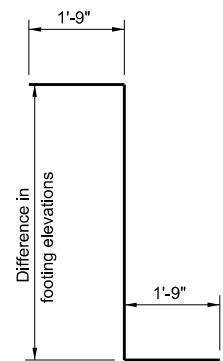


PARTIAL ELEVATION

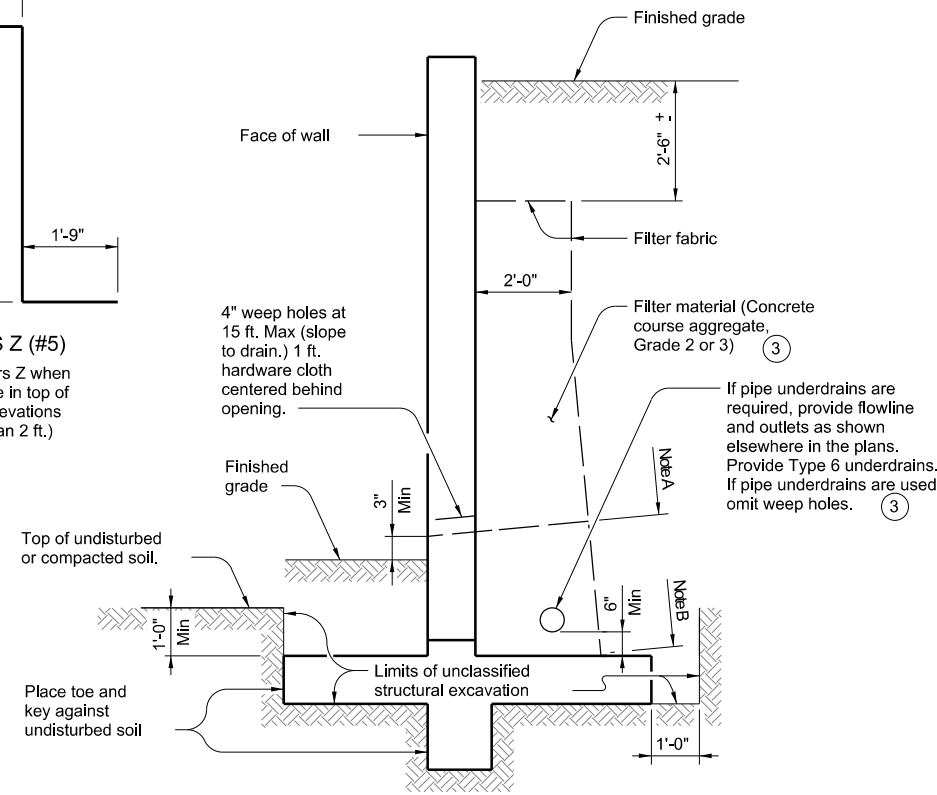


PARTIAL SECTION

SHOWING WATERSTOP AT FOOTING ELEVATION TRANSITION



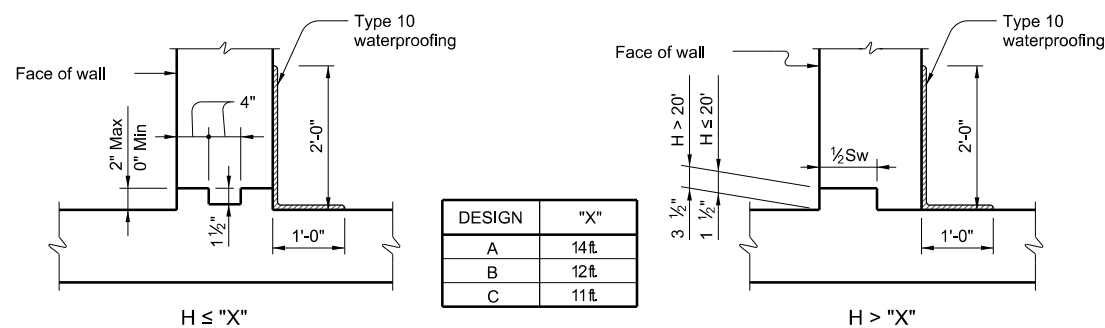
BARS Z (#5)
(Omit Bars Z when difference in top of footing elevations is less than 2 ft.)



DRAINAGE DETAILS AND EXCAVATION DIAGRAM

Note A: Stop coarse aggregate at this level when weep holes are used.

Note B: Use coarse aggregate to here with filter material above when underdrains are used.



$H \leq "X"$

$H > "X"$

DESIGN	"X"
A	14ft
B	12ft
C	11ft

JOINT AND WATERSTOP DETAILS

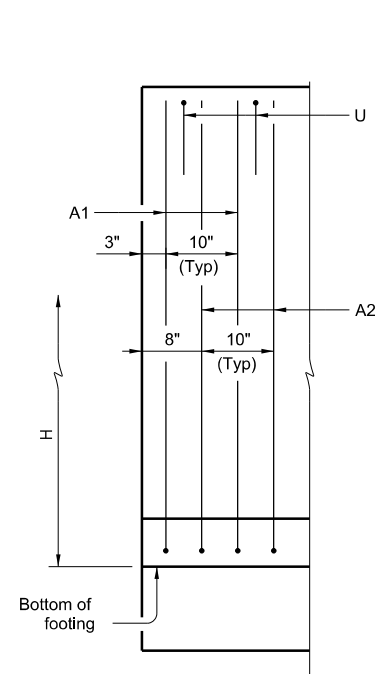
1		ADDENDUM •1	07/21/2022
SPREAD FOOTING RETAINING WALL MISCELLANEOUS DETAILS			
RW(SF)			
FILE: RW-SF-22.dgn	DN: TAR	CK: RLE	DW: JER
©TxDOT June 2022	CONT: 03	SECT: 014, ETC.	JOB: FM 621, ETC.
REVISIONS	DIST: AUS	COUNTY: HAYS	SHEET NO: 68

DATE:
FILE:

DISCLAIMER: The use of this standard is governed by the "Texas Engineering Practice Act". No warranty of any kind is made by TxDOT for any purpose whatsoever. TxDOT assumes no responsibility for the conversion of this standard to other formats or for incorrect results or damages resulting from its use.

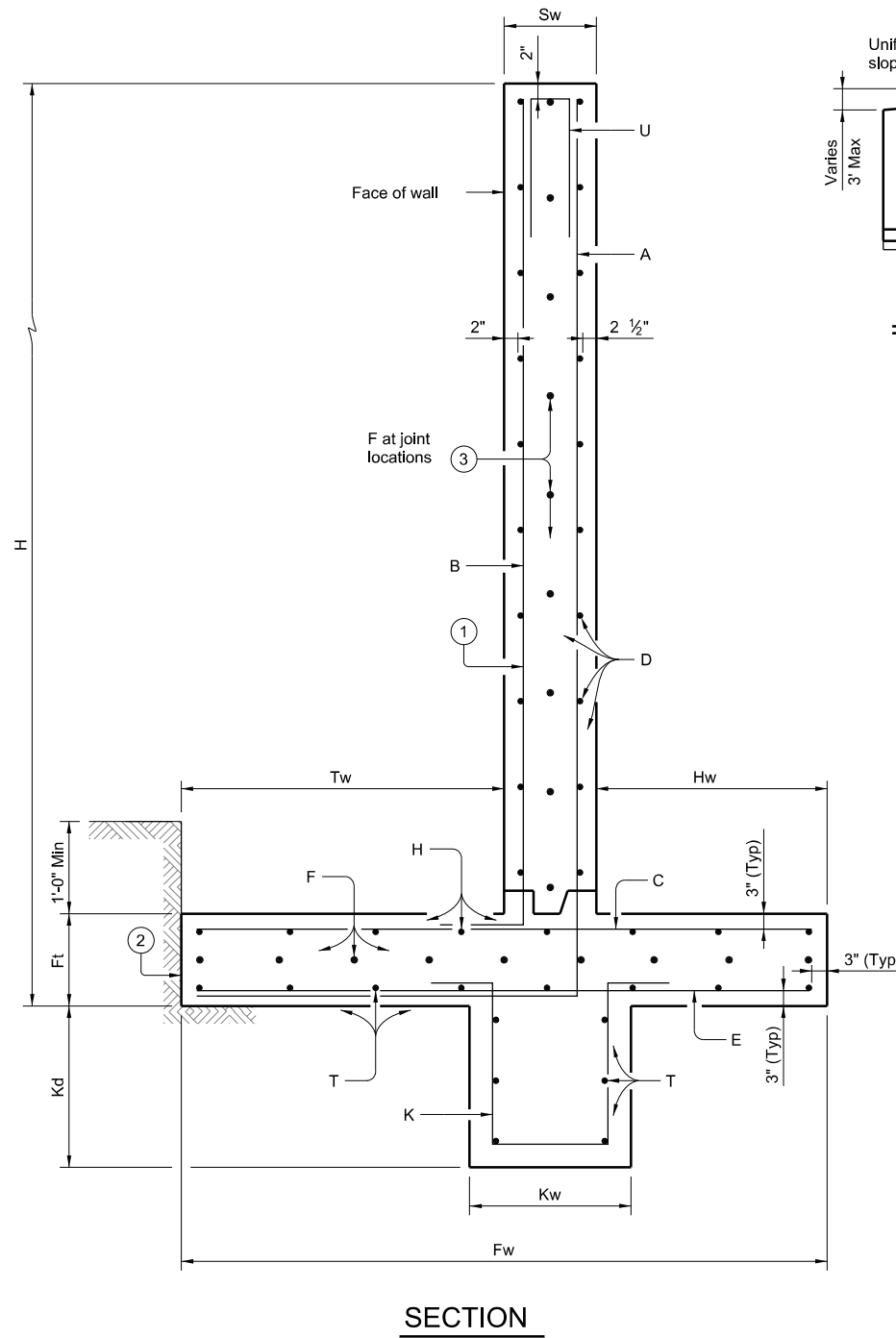
DATE: FILE:

Wall Height "H" (Ft)	PROPERTIES								REINFORCING STEEL FOR ONE 32' PANEL (DESIGN C)																												QUANTITY FOR ONE 32' PANEL		Wall Height "H" (Ft)												
	WALL DIMENSIONS							MAX SOIL PRESS T/SF	Bars A1				Bars A2				Bars B				Bars C				Bars E				Bars K				D (#5) at 12" Max.		Dowel F at 12" Max.		H (#5) at 12" Max.			T (#5) at 12" Max.		U ~ 27 #5 at 15" Max.		Conc (CY)	REINF (LB)						
	Fw	Tw	Sw	Hw	Ft	Kw	Kd		No.	Size	Spa.	Length	Weight	No.	Size	Spa.	Length	Weight	No.	Size	Spa.	Length	Weight	No.	Size	Spa.	Length	Weight	No.	Size	Spa.	Length	Weight	No.	Weight	No.	Weight	No.		Weight	No.	Weight	Length			Weight					
2	5'-0"	1'-0"	1'-0"	3'-0"	1'-0"	1'-0"	1'-0"	0.218	39	#4	10"	3'-2"	83	39	#4	10"	3'-2"	83	39	#4	10"	1'-11"	50	39	#4	10"	4'-6"	118	39	#4	10"	4'-6"	118	39	#4	10"	3'-10"	100	4	132	8	65	6	198	6	198	2'-0"	57	8.3	1202	2
4	5'-0"	1'-0"	1'-0"	3'-0"	1'-0"	1'-0"	1'-0"	0.321	39	#4	10"	5'-2"	135	39	#4	10"	5'-2"	135	39	#4	10"	3'-11"	103	39	#4	10"	4'-6"	118	39	#4	10"	4'-6"	118	39	#4	10"	3'-10"	100	8	263	10	81	6	198	6	198	3'-6"	99	10.7	1548	4
6	5'-6"	1'-6"	1'-0"	3'-0"	1'-0"	1'-0"	1'-0"	0.395	39	#4	10"	7'-8"	200	39	#4	10"	7'-8"	200	39	#4	10"	5'-11"	155	39	#4	10"	5'-0"	131	39	#4	10"	5'-0"	131	39	#4	10"	3'-10"	100	12	395	12	97	6	198	6	198	3'-6"	99	13.7	1904	6
8	7'-4"	1'-9"	1'-1"	4'-6"	1'-0"	1'-0"	1'-0"	0.500	39	#4	10"	10'-0"	261	39	#4	10"	10'-0"	261	39	#4	10"	7'-11"	207	39	#4	10"	6'-10"	179	39	#4	10"	6'-10"	179	39	#4	10"	3'-10"	100	16	526	16	129	8	263	8	263	3'-7"	101	18.9	2469	8
10	8'-8"	2'-4"	1'-1"	5'-3"	1'-2"	1'-6"	1'-6"	0.590	39	#5	10"	12'-7"	512	39	#4	10"	12'-7"	328	39	#4	10"	9'-9"	255	39	#5	10"	8'-2"	333	39	#4	10"	8'-2"	213	39	#4	10"	5'-4"	139	20	658	20	161	10	329	10	329	3'-7"	101	26.0	3358	10
12	10'-4"	2'-11"	1'-2"	6'-3"	1'-4"	1'-9"	1'-9"	0.684	39	#5	10"	15'-3"	621	39	#4	10"	15'-3"	398	39	#4	10"	11'-7"	302	39	#5	10"	9'-10"	400	39	#4	10"	9'-10"	257	39	#4	10"	6'-1"	159	24	789	23	185	11	362	11	362	3'-8"	104	34.8	3939	12
14	11'-8"	3'-6"	1'-4"	6'-10"	1'-7"	2'-0"	2'-0"	0.769	39	#5	10"	18'-0"	733	39	#4	10"	18'-0"	469	39	#4	10"	13'-4"	348	39	#5	10"	11'-2"	455	39	#4	10"	11'-2"	291	39	#4	10"	6'-10"	179	28	920	27	217	13	428	13	428	3'-10"	108	46.3	4576	14
16	13'-1"	4'-0"	1'-6"	7'-7"	1'-9"	2'-0"	2'-0"	0.853	39	#5	10"	20'-8"	841	39	#5	10"	20'-8"	841	39	#4	10"	15'-2"	396	39	#6	10"	12'-7"	738	39	#4	10"	12'-7"	329	39	#4	10"	6'-10"	179	32	1052	30	241	14	460	14	460	4'-0"	113	57.3	5650	16
18	14'-7"	4'-6"	1'-8"	8'-5"	1'-9"	2'-0"	2'-0"	0.937	39	#6	10"	23'-4"	1367	39	#5	10"	23'-4"	950	39	#4	10"	17'-2"	448	39	#7	10"	14'-1"	1124	39	#4	10"	14'-1"	368	39	#4	10"	6'-10"	179	36	1183	34	273	16	526	16	526	4'-2"	118	67.1	7062	18
20	16'-5"	5'-0"	1'-10"	9'-7"	2'-0"	2'-0"	2'-0"	1.039	39	#6	10"	26'-0"	1524	39	#6	10"	26'-0"	1524	39	#4	10"	18'-11"	493	39	#7	10"	17'-11"	1429	39	#4	10"	17'-11"	467	39	#4	10"	6'-10"	179	38	1249	36	289	17	559	17	559	4'-4"	123	82.8	8395	20

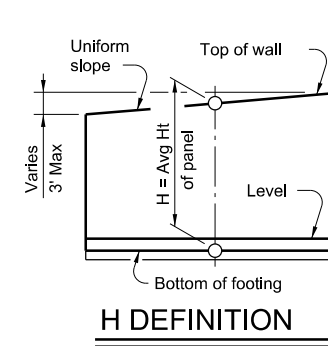


PARTIAL WALL ELEVATION

(Showing vertical reinforcing pattern in back face.)



SECTION



H DEFINITION

- Place vertical bars inside of horizontal bars (Typical both faces.)
- Place footing toe against undisturbed soil.
- See Retaining Wall Miscellaneous Details (RW(SF)) standard for size.

MATERIAL NOTES:

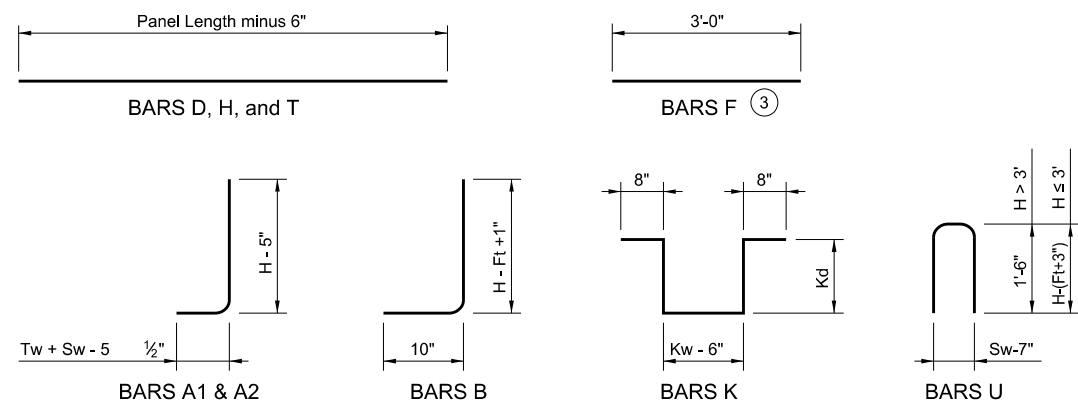
Provide Class C concrete (f'c=3,600 psi.)
Provide Grade 60 reinforcing steel.

GENERAL NOTES:

Designed according to AASHTO LRFD Bridge Design Specifications.
Walls are designed assuming unit weight of soil = 120 pcf and a friction angle = 30 degrees for foundation and retained soil.
See Retaining Wall Miscellaneous Details (RW(SF)) standard for details and notes not shown.
These details provide designs for wall heights of 2 to 20 feet. For heights not shown, round up "H" to determine wall dimensions and reinforcing. (For example, a 9-foot high wall would use the 10-foot high dimensions and reinforcing.)
Quantities are based on "H" being average height of panel.
Retaining walls are designed to be coded as follows on Retaining Wall Layout Sheets:

- C - 15 - 32 □ Panel length ~ 32 ft. is standard; 28 ft. requires special quantities.
- Average height (H) of panel.
- Design A = No surcharge or slope above wall.
- Design B = No surcharge; slopes to 3:1.
- Design C = Traffic surcharge; no slope above wall.

Cover dimensions are clear dimensions, unless noted otherwise.
Reinforcing bar dimensions shown are out-to-out of bar.



Texas Department of Transportation
Bridge Division Standard

SPREAD FOOTING RETAINING WALL

RW(SFC)

FILE: RW-SFC-22.dgn	DN: TAR	CK: RLE	DW: JER	CK: TAR
©TxDOT June 2022	CONT: 0987	SECT: 03	JOB: 014, ETC.	HIGHWAY: FM 621, ETC.
REVISIONS:	DIST: AUS	COUNTY: HAYS	SHEET NO.:	68A

ADDENDUM #1 07/21/2022