

SUBJECT: PLANS AND PROPOSAL ADDENDUMS  
PROJECT: STP 2022(615)MM CONTROL: 0047-06-161  
COUNTY: COLLIN  
LETTING: 06/02/2022  
REFERENCE NO: 0518

**PROPOSAL ADDENDUMS**

- \_ PROPOSAL COVER  
X BID INSERTS (SH. NO.: 3,6,7 )  
\_ GENERAL NOTES (SH. NO.: )  
\_ SPEC LIST (SH. NO.: )  
\_ SPECIAL PROVISIONS: )  
\_ ADDED:  
  
DELETED:  
  
\_ SPECIAL SPECIFICATIONS:  
\_ ADDED:  
  
DELETED:  
  
X OTHER: PLAN SHEETS AND OTHER CHANGES

DESCRIPTION OF ABOVE CHANGES  
(INCLUDING PLANS SHEET CHANGES)

\*\*\*\*\* BID INSERTS \*\*\*\*\*

REVISED QUANTITIES FOR THE FOLLOWING ITEMS:  
402-6001, 464-6005, 464-6007, 464-6008, 465-6007, 465-6014, 465-6016,  
465-6030

DELETED THE FOLLOWING BID ITEMS:  
462-6002, 465-6002, 465-6163

ADDED THE FOLLOWING BID ITEMS:  
465-6071, 465-6178, 465-6562

BID INSERT SHEETS 3-21, 6-21 AND 7-21 CHANGED AS A RESULT  
OF THE ABOVE REVISIONS.  
INFORMATION MAY HAVE SHIFTED DUE TO THE ABOVE REVISIONS.

\*\*\*\*\* PLAN SHEETS \*\*\*\*\*

THE FOLLOWING PLAN SHEETS ARE REPLACED:  
DESCRIPTION OF ABOVE CHANGES  
(INCLUDING PLANS SHEET CHANGES)

(CONTINUED)

24, 24A, 24B, 24C, 24D, 24E, 24F, 28, 354



CONTROLLING PROJECT ID 0047-06-161

DISTRICT Dallas  
HIGHWAY US 75

COUNTY Collin

# Estimate & Quantity Sheet

CONTROL SECTION JOB				0047-06-161		TOTAL EST.	TOTAL FINAL
PROJECT ID				A00062370			
COUNTY				Collin			
HIGHWAY				US 75			
ALT	BID CODE	DESCRIPTION	UNIT	EST.	FINAL		
	100-6002	PREPARING ROW	STA	69.470		69.470	
	104-6001	REMOVING CONC (PAV)	SY	47,427.000		47,427.000	
	104-6009	REMOVING CONC (RIPRAP)	SY	80.000		80.000	
	104-6010	REMOVING CONC (RIPRAP)	CY	0.250		0.250	
	104-6015	REMOVING CONC (SIDEWALKS)	SY	1,517.000		1,517.000	
	104-6017	REMOVING CONC (DRIVEWAYS)	SY	2,593.000		2,593.000	
	104-6044	REMOVING CONC (FLUME)	SY	216.000		216.000	
	105-6043	REMOVING STAB BASE & ASPH PAV (0-6")	SY	47,427.000		47,427.000	
	105-6081	REMOV STAB BASE & ASPH PAV (4"-14")	SY	6,518.000		6,518.000	
	110-6001	EXCAVATION (ROADWAY)	CY	33,138.000		33,138.000	
	132-6025	EMBANKMENT (FINAL) (DENS CONT) (TY C1)	CY	40,479.000		40,479.000	
	132-6026	EMBANKMENT (FINAL) (DENS CONT) (TY C2)	CY	52,874.000		52,874.000	
	161-6017	COMPOST MANUF TOPSOIL (4")	SY	39,252.000		39,252.000	
	162-6002	BLOCK SODDING	SY	39,252.000		39,252.000	
	164-6051	DRILL SEED (TEMP)(WARM OR COOL)	SY	14,785.000		14,785.000	
	168-6001	VEGETATIVE WATERING	MG	8,048.000		8,048.000	
	216-6001	PROOF ROLLING	HR	26.000		26.000	
	247-6053	FL BS (CMP IN PLC)(TYD GR1-2)(FNAL POS)	CY	5,765.000		5,765.000	
	260-6016	LIME (HYD, COM, OR QK(SLURRY))	TON	1,308.000		1,308.000	
	260-6027	LIME TRT (EXST MATL)(8")	SY	78,687.000		78,687.000	
	360-6007	CONC PVMT (CONT REINF - CRCP) (13")	SY	32,861.000		32,861.000	
	360-6020	CONC PVMT (JOINTED - CPCD) (10")	SY	39,523.000		39,523.000	
	360-6026	CURB (TYPE I)	LF	4,746.000		4,746.000	
	360-6027	CURB (TYPE II)	LF	12,848.000		12,848.000	
	402-6001	TRENCH EXCAVATION PROTECTION	LF	10,714.000		10,714.000	
	403-6001	TEMPORARY SPL SHORING	SF	13,883.000		13,883.000	
	416-6004	DRILL SHAFT (36 IN)	LF	4,455.000		4,455.000	
	416-6005	DRILL SHAFT (42 IN)	LF	180.000		180.000	
	416-6006	DRILL SHAFT (48 IN)	LF	521.000		521.000	
	416-6019	DRILL SHAFT (SIGN MTS) (30 IN)	LF	56.000		56.000	
	416-6022	DRILL SHAFT (SIGN MTS) (48 IN)	LF	16.000		16.000	
	416-6023	DRILL SHAFT (SIGN MTS) (54 IN)	LF	34.000		34.000	
	416-6026	DRILL SHAFT (HIGH MAST POLE) (60 IN)	LF	126.000		126.000	
	416-6029	DRILL SHAFT (RDWY ILL POLE) (30 IN)	LF	8.000		8.000	
	416-6032	DRILL SHAFT (TRF SIG POLE) (36 IN)	LF	26.000		26.000	
	420-6011	CL B CONC (FLUME)	CY	24.000		24.000	
	420-6014	CL C CONC (ABUT)(HPC)	CY	206.900		206.900	

 REPLACED 5/18/2022



DISTRICT	COUNTY	CCSJ	SHEET
Dallas	Collin	0047-06-161	24



# Estimate & Quantity Sheet

CONTROLLING PROJECT ID 0047-06-161

DISTRICT Dallas  
HIGHWAY US 75

COUNTY Collin

CONTROL SECTION JOB				0047-06-161		TOTAL EST.	TOTAL FINAL
PROJECT ID				A00062370			
COUNTY				Collin			
HIGHWAY				US 75			
ALT	BID CODE	DESCRIPTION	UNIT	EST.	FINAL		
	420-6030	CL C CONC (CAP)(HPC)	CY	491.200		491.200	
	420-6032	CL C CONC (CAP)(HPC)(MASS)	CY	81.700		81.700	
	420-6038	CL C CONC (COLUMN)(HPC)	CY	442.700		442.700	
	420-6066	CL C CONC (RAIL FOUNDATION)	CY	809.300		809.300	
	420-6089	CL F CONC (PT CAP)(HPC)(MASS)	CY	273.300		273.300	
	420-6128	CL K CONC (MISC)	CY	17.600		17.600	
	422-6002	REINF CONC SLAB (HPC)	SF	90,765.000		90,765.000	
	422-6012	BRIDGE MEDIAN (HPC)	SF	1,947.000		1,947.000	
	422-6014	BRIDGE SIDEWALK (HPC)	SF	10,606.000		10,606.000	
	422-6015	APPROACH SLAB	CY	235.000		235.000	
	423-6001	RETAINING WALL (MSE)	SF	108,743.000		108,743.000	
	425-6035	PRESTR CONC GIRDER (TX28)	LF	1,505.370		1,505.370	
	425-6038	PRESTR CONC GIRDER (TX46)	LF	8,295.310		8,295.310	
	432-6001	RIPRAP (CONC)(4 IN)	CY	1,653.490		1,653.490	
	432-6002	RIPRAP (CONC)(5 IN)	CY	18.500		18.500	
	432-6024	RIPRAP (STONE COMMON)(DRY)(12 IN)	CY	1,359.000		1,359.000	
	432-6030	RIPRAP (STONE COMMON)(GROUT)(12 IN)	CY	108.000		108.000	
	432-6045	RIPRAP (MOW STRIP)(4 IN)	CY	235.900		235.900	
	442-6007	STR STEEL (MISC NON - BRIDGE)	LB	16,982.000		16,982.000	
	450-6023	RAIL (TY SSTR)	LF	11,570.000		11,570.000	
	450-6024	RAIL (TY SSTR)(HPC)	LF	797.200		797.200	
	450-6030	RAIL (TY C221)	LF	1,581.000		1,581.000	
	450-6031	RAIL (TY C221)(HPC)	LF	251.500		251.500	
	450-6103	RAIL (TY PR11)	LF	135.000		135.000	
	454-6003	ARMOR JOINT	LF	745.000		745.000	
	454-6018	SEALED EXPANSION JOINT (4 IN) (SEJ - M)	LF	1,348.000		1,348.000	
	462-6003	CONC BOX CULV (4 FT X 2 FT)	LF	1,029.000		1,029.000	
	462-6014	CONC BOX CULV (7 FT X 3 FT)	LF	314.000		314.000	
	462-6019	CONC BOX CULV (8 FT X 4 FT)	LF	104.000		104.000	
	462-6178	CONC BOX CULV (5 FT X 4 FT) (MOD)	LF	8.000		8.000	
	464-6005	RC PIPE (CL III)(24 IN)	LF	10,429.000		10,429.000	
	464-6007	RC PIPE (CL III)(30 IN)	LF	1,471.000		1,471.000	
	464-6008	RC PIPE (CL III)(36 IN)	LF	966.000		966.000	
	465-6007	JCTBOX(COMPL)(PJB)(3FTX5FT)	EA	2.000		2.000	
	465-6014	INLET (COMPL)(PCO)(3FT)(LEFT)	EA	27.000		27.000	
	465-6015	INLET (COMPL)(PCO)(3FT)(RIGHT)	EA	17.000		17.000	
	465-6016	INLET (COMPL)(PCO)(3FT)(BOTH)	EA	15.000		15.000	

REPLACED 5/18/2022



DISTRICT	COUNTY	CCSJ	SHEET
Dallas	Collin	0047-06-161	24A



# Estimate & Quantity Sheet

CONTROLLING PROJECT ID 0047-06-161

DISTRICT Dallas  
HIGHWAY US 75

COUNTY Collin

CONTROL SECTION JOB				0047-06-161		TOTAL EST.	TOTAL FINAL
PROJECT ID				A00062370			
COUNTY				Collin			
HIGHWAY				US 75			
ALT	BID CODE	DESCRIPTION	UNIT	EST.	FINAL		
	465-6030	INLET (COMPL)(PCU)(3FT)(LEFT)	EA	9.000		9.000	
	465-6031	INLET (COMPL)(PCU)(3FT)(RIGHT)	EA	9.000		9.000	
	465-6032	INLET (COMPL)(PCU)(3FT)(BOTH)	EA	21.000		21.000	
	465-6071	INLET (COMPL)(PSL)(RC)(4FTX4FT)	EA	2.000		2.000	
	465-6178	INLET (COMPL)(TY MSE1)	EA	17.000		17.000	
	465-6515	JUNCT BOX (COMPL)(JB)(5FT X 3FT)(FTW)	EA	1.000		1.000	
	465-6562	INL(CMP)(PAZD-CZ)(FG)(5FTX5FT-4FTX4FT)	EA	4.000		4.000	
	466-6152	WINGWALL (FW - 0) (HW=5 FT)	EA	1.000		1.000	
	466-6180	WINGWALL (PW - 1) (HW=5 FT)	EA	1.000		1.000	
	466-6182	WINGWALL (PW - 1) (HW=7 FT)	EA	1.000		1.000	
	466-6183	WINGWALL (PW - 1) (HW=8 FT)	EA	1.000		1.000	
	479-6006	ADJUSTING INLET (CAP)	EA	2.000		2.000	
	480-6001	CLEAN EXIST CULVERTS	EA	2.000		2.000	
	481-6013	PIPE (PVC) (SCH 40) (6 IN)	LF	84.000		84.000	
	496-6002	REMOV STR (INLET)	EA	86.000		86.000	
	496-6003	REMOV STR (MANHOLE)	EA	5.000		5.000	
	496-6004	REMOV STR (SET)	EA	3.000		3.000	
	496-6006	REMOV STR (HEADWALL)	EA	4.000		4.000	
	496-6007	REMOV STR (PIPE)	LF	9,739.000		9,739.000	
	496-6008	REMOV STR (BOX CULVERT)	LF	429.000		429.000	
	496-6010	REMOV STR (BRIDGE 100 - 499 FT LENGTH)	EA	1.000		1.000	
	496-6023	REMOVE STR (JUNCTION BOX)	EA	1.000		1.000	
	496-6050	REMOV STR (DRIVEWAY CULVERT)	EA	1.000		1.000	
	500-6001	MOBILIZATION	LS	1.000		1.000	
	502-6001	BARRICADES, SIGNS AND TRAFFIC HANDLING	MO	24.000		24.000	
	506-6002	ROCK FILTER DAMS (INSTALL) (TY 2)	LF	290.000		290.000	
	506-6011	ROCK FILTER DAMS (REMOVE)	LF	290.000		290.000	
	506-6020	CONSTRUCTION EXITS (INSTALL) (TY 1)	SY	819.000		819.000	
	506-6024	CONSTRUCTION EXITS (REMOVE)	SY	819.000		819.000	
	506-6038	TEMP SEDMT CONT FENCE (INSTALL)	LF	4,347.000		4,347.000	
	506-6039	TEMP SEDMT CONT FENCE (REMOVE)	LF	4,347.000		4,347.000	
	506-6041	BIODEG EROSN CONT LOGS (INSTL) (12")	LF	2,918.000		2,918.000	
	506-6042	BIODEG EROSN CONT LOGS (INSTL) (18")	LF	53.000		53.000	
	506-6043	BIODEG EROSN CONT LOGS (REMOVE)	LF	2,971.000		2,971.000	
	508-6001	CONSTRUCTING DETOURS	SY	412.000		412.000	
	512-6005	PORT CTB (FUR & INST)(F-SHAPE)(TY 1)	LF	9,540.000		9,540.000	
	512-6009	PORT CTB (FUR & INST)(LOW PROF)(TY 1)	LF	1,057.000		1,057.000	

 REPLACED 5/18/2022



DISTRICT	COUNTY	CCSJ	SHEET
Dallas	Collin	0047-06-161	24B



# Estimate & Quantity Sheet

CONTROLLING PROJECT ID 0047-06-161

DISTRICT Dallas  
HIGHWAY US 75

COUNTY Collin

CONTROL SECTION JOB				0047-06-161		TOTAL EST.	TOTAL FINAL
PROJECT ID				A00062370			
COUNTY				Collin			
HIGHWAY				US 75			
ALT	BID CODE	DESCRIPTION	UNIT	EST.	FINAL		
	512-6010	PORT CTB (FUR & INST)(LOW PROF)(TY 2)	LF	60.000		60.000	
	512-6029	PORT CTB (MOVE)(F-SHAPE)(TY 1)	LF	7,440.000		7,440.000	
	512-6053	PORT CTB (REMOVE)(F-SHAPE)(TY 1)	LF	9,540.000		9,540.000	
	512-6057	PORT CTB (REMOVE)(LOW PROF)(TY 1)	LF	1,057.000		1,057.000	
	512-6058	PORT CTB (REMOVE)(LOW PROF)(TY 2)	LF	60.000		60.000	
	514-6005	PERM CTB (SGL SLOPE) (TY 1) (48 )	LF	3,504.000		3,504.000	
	514-6007	PERM CTB (SGL SLOPE) (TY 3) (48 )	LF	456.500		456.500	
	514-6013	PERM CTB (F-SHAPE) (TY 1)	LF	370.000		370.000	
	530-6004	DRIVEWAYS (CONC)	SY	2,032.000		2,032.000	
	531-6001	CONC SIDEWALKS (4")	SY	6,310.000		6,310.000	
	531-6013	CURB RAMPS (TY 10)	EA	18.000		18.000	
	531-6016	CURB RAMPS (TY 21)	EA	2.000		2.000	
	540-6001	MTL W-BEAM GD FEN (TIM POST)	LF	800.000		800.000	
	540-6002	MTL W-BEAM GD FEN (STEEL POST)	LF	475.000		475.000	
	540-6005	TERMINAL ANCHOR SECTION	EA	4.000		4.000	
	540-6016	DOWNSTREAM ANCHOR TERMINAL SECTION	EA	5.000		5.000	
	542-6001	REMOVE METAL BEAM GUARD FENCE	LF	2,250.000		2,250.000	
	544-6001	GUARDRAIL END TREATMENT (INSTALL)	EA	9.000		9.000	
	544-6003	GUARDRAIL END TREATMENT (REMOVE)	EA	15.000		15.000	
	545-6003	CRASH CUSH ATTEN (MOVE & RESET)	EA	5.000		5.000	
	545-6005	CRASH CUSH ATTEN (REMOVE)	EA	5.000		5.000	
	545-6013	CRASH CUSH ATTEN (INSTL)(R)(N)(TL3)	EA	6.000		6.000	
	545-6019	CRASH CUSH ATTEN (INSTL)(S)(N)(TL3)	EA	5.000		5.000	
	610-6004	RELOCATE RD IL ASM (TRANS-BASE)	EA	1.000		1.000	
	610-6008	REMOVE RD IL ASM (CTB MOUNT)	EA	6.000		6.000	
	610-6009	REMOVE RD IL ASM (TRANS-BASE)	EA	2.000		2.000	
	610-6102	REPLACE LUMINAIRE W/LED (250W EQ)	EA	2.000		2.000	
	610-6104	IN RD IL (U/P) (TY 1) (150W EQ) LED	EA	12.000		12.000	
	613-6005	HI MST IL POLE (150 FT)( 80 MPH)	EA	1.000		1.000	
	613-6007	HI MST IL POLE (175 FT)( 80 MPH)	EA	1.000		1.000	
	614-6007	LED HI MST IL ASM (6 FIXT)(ASYM)(TY A)	EA	2.000		2.000	
	614-6011	REPLC LED HI MST IL(6 FIXT)(ASYM)(TY A)	EA	2.000		2.000	
	618-6023	CONDT (PVC) (SCH 40) (2")	LF	2,135.000		2,135.000	
	618-6024	CONDT (PVC) (SCH 40) (2") (BORE)	LF	650.000		650.000	
	618-6029	CONDT (PVC) (SCH 40) (3")	LF	9,743.000		9,743.000	
	618-6030	CONDT (PVC) (SCH 40) (3") (BORE)	LF	2,700.000		2,700.000	
	618-6064	CONDT (RM) (1")	LF	1,015.000		1,015.000	

REPLACED 5/18/2022



DISTRICT	COUNTY	CCSJ	SHEET
Dallas	Collin	0047-06-161	24C




# Estimate & Quantity Sheet

CONTROLLING PROJECT ID 0047-06-161

DISTRICT Dallas  
HIGHWAY US 75

COUNTY Collin

CONTROL SECTION JOB				0047-06-161		TOTAL EST.	TOTAL FINAL
PROJECT ID				A00062370			
COUNTY				Collin			
HIGHWAY				US 75			
ALT	BID CODE	DESCRIPTION	UNIT	EST.	FINAL		
	618-6070	CONDT (RM) (2")	LF	129.000		129.000	
	618-6074	CONDT (RM) (3")	LF	702.000		702.000	
	618-6078	CONDT (RM) (4")	LF	442.000		442.000	
	620-6004	ELEC CONDR (NO.12) INSULATED	LF	3,045.000		3,045.000	
	620-6007	ELEC CONDR (NO.8) BARE	LF	3,360.000		3,360.000	
	620-6008	ELEC CONDR (NO.8) INSULATED	LF	13,075.000		13,075.000	
	624-6001	GROUND BOX TY A (122311)	EA	2.000		2.000	
	624-6002	GROUND BOX TY A (122311)W/APRON	EA	6.000		6.000	
	624-6008	GROUND BOX TY C (162911)W/APRON	EA	2.000		2.000	
	624-6009	GROUND BOX TY D (162922)	EA	2.000		2.000	
	624-6010	GROUND BOX TY D (162922)W/APRON	EA	1.000		1.000	
	624-6028	REMOVE GROUND BOX	EA	8.000		8.000	
	628-6002	REMOVE ELECTRICAL SERVICES	EA	1.000		1.000	
	628-6041	ELC SRV TY A 240/480 060(NS)SS(E)GC(O)	EA	1.000		1.000	
	636-6001	ALUMINUM SIGNS (TY A)	SF	54.000		54.000	
	636-6003	ALUMINUM SIGNS (TY O)	SF	1,148.250		1,148.250	
	636-6009	REPLACE EXISTING ALUMINUM SIGNS(TY O)	SF	257.000		257.000	
	644-6001	IN SM RD SN SUP&AM TY10BWG(1)SA(P)	EA	17.000		17.000	
	644-6004	IN SM RD SN SUP&AM TY10BWG(1)SA(T)	EA	13.000		13.000	
	644-6005	IN SM RD SN SUP&AM TY10BWG(1)SA(T-2EXT)	EA	2.000		2.000	
	644-6009	IN SM RD SN SUP&AM TY10BWG(1)SB(P)	EA	9.000		9.000	
	644-6012	IN SM RD SN SUP&AM TY10BWG(1)SB(T)	EA	13.000		13.000	
	644-6030	IN SM RD SN SUP&AM TYS80(1)SA(T)	EA	3.000		3.000	
	644-6044	IN SM RD SN SUP&AM TYS80(1)SB(U)	EA	2.000		2.000	
	644-6051	IN SM RD SN SUP&AM TYS80(2)SA(P-EXAL)	EA	2.000		2.000	
	644-6064	IN BRIDGE MNT CLEARANCE SGN ASSM(TY N)	EA	5.000		5.000	
	644-6065	IN BRIDGE MNT CLEARANCE SGN ASSM(TY S)	EA	1.000		1.000	
	644-6076	REMOVE SM RD SN SUP&AM	EA	1.000		1.000	
	650-6032	INS OH SN SUP(30 FT CANT)	EA	1.000		1.000	
	650-6045	INS OH SN SUP(40 FT CANT)	EA	2.000		2.000	
	650-6104	INS OH SN SUP(95 FT BRDG)	EA	1.000		1.000	
	650-6204	REMOVE OVERHD SIGN SUP	EA	4.000		4.000	
	658-6015	INSTL DEL ASSM (D-SW)SZ (BRF)GF1	EA	12.000		12.000	
	662-6004	WK ZN PAV MRK NON-REMOV (W)4"(SLD)	LF	20,258.000		20,258.000	
	662-6060	WK ZN PAV MRK REMOV (W)4"(BRK)	LF	41,733.000		41,733.000	
	662-6063	WK ZN PAV MRK REMOV (W)4"(SLD)	LF	4,385.000		4,385.000	
	662-6071	WK ZN PAV MRK REMOV (W)8"(SLD)	LF	855.000		855.000	

 REPLACED 5/18/2022



DISTRICT	COUNTY	CCSJ	SHEET
Dallas	Collin	0047-06-161	24D





# Estimate & Quantity Sheet

CONTROLLING PROJECT ID 0047-06-161

DISTRICT Dallas  
HIGHWAY US 75

COUNTY Collin

CONTROL SECTION JOB				0047-06-161		TOTAL EST.	TOTAL FINAL
PROJECT ID				A00062370			
COUNTY				Collin			
HIGHWAY				US 75			
ALT	BID CODE	DESCRIPTION	UNIT	EST.	FINAL		
	662-6095	WK ZN PAV MRK REMOV (Y)4"(SLD)	LF	10,303.000		10,303.000	
	666-6036	REFL PAV MRK TY I (W)8"(SLD)(100MIL)	LF	9,358.000		9,358.000	
	666-6042	REFL PAV MRK TY I (W)12"(SLD)(100MIL)	LF	1,852.000		1,852.000	
	666-6048	REFL PAV MRK TY I (W)24"(SLD)(100MIL)	LF	933.000		933.000	
	666-6054	REFL PAV MRK TY I (W)(ARROW)(100MIL)	EA	20.000		20.000	
	666-6057	REFL PAV MRK TY I(W)(DBL ARROW)(100MIL)	EA	4.000		4.000	
	666-6063	REFL PAV MRK TY I(W)(UTURN ARW)(100MIL)	EA	4.000		4.000	
	666-6072	REFL PAV MRK TY I(W)(LNDRP ARW)(100MIL)	EA	2.000		2.000	
	666-6078	REFL PAV MRK TY I (W)(WORD)(100MIL)	EA	16.000		16.000	
	666-6224	PAVEMENT SEALER 4"	LF	54,162.000		54,162.000	
	666-6225	PAVEMENT SEALER 6"	LF	7,720.000		7,720.000	
	666-6226	PAVEMENT SEALER 8"	LF	9,358.000		9,358.000	
	666-6228	PAVEMENT SEALER 12"	LF	11,140.000		11,140.000	
	666-6230	PAVEMENT SEALER 24"	LF	933.000		933.000	
	666-6231	PAVEMENT SEALER (ARROW)	EA	20.000		20.000	
	666-6232	PAVEMENT SEALER (WORD)	EA	16.000		16.000	
	666-6234	PAVEMENT SEALER (DBL ARROW)	EA	4.000		4.000	
	666-6236	PAVEMENT SEALER (UTURN ARROW)	EA	4.000		4.000	
	666-6237	PAVEMENT SEALER (LNDRP ARROW)	EA	2.000		2.000	
	666-6350	REFL PAV MRK TY I (W)12"(DOT)(100MIL)	LF	9,288.000		9,288.000	
	672-6009	REFL PAV MRKR TY II-A-A	EA	12.000		12.000	
	672-6010	REFL PAV MRKR TY II-C-R	EA	1,490.000		1,490.000	
	677-6001	ELIM EXT PAV MRK & MRKS (4")	LF	7,970.000		7,970.000	
	677-6002	ELIM EXT PAV MRK & MRKS (6")	LF	8,500.000		8,500.000	
	678-6001	PAV SURF PREP FOR MRK (4")	LF	32,200.000		32,200.000	
	678-6002	PAV SURF PREP FOR MRK (6")	LF	1,130.000		1,130.000	
	678-6004	PAV SURF PREP FOR MRK (8")	LF	5,281.000		5,281.000	
	678-6006	PAV SURF PREP FOR MRK (12")	LF	1,970.000		1,970.000	
	678-6008	PAV SURF PREP FOR MRK (24")	LF	933.000		933.000	
	690-6009	REMOVAL OF CABLES	LF	2,070.000		2,070.000	
	690-6011	INSTALL OF CABLES	LF	565.000		565.000	
	690-6036	INSTALL OF FND FOR GROUND MNT CABINETS	EA	1.000		1.000	
	730-6002	FULL - WIDTH MOWING	AC	9.000		9.000	
	734-6001	LITTER REMOVAL	AC	57.250		57.250	
	735-6001	DEBRIS REMOVAL (CNTR MEDIANS/MAINLANES)	CYC	3.000		3.000	
	740-6004	ANTI - GRAFFITI COATING(PERMNET-TY II)	SF	116,157.000		116,157.000	
	3077-6001	SP MIXESSP-BPG64-22	TON	18,819.000		18,819.000	

 **REPLACED 5/18/2022**



DISTRICT	COUNTY	CCSJ	SHEET
Dallas	Collin	0047-06-161	24E





# Estimate & Quantity Sheet

CONTROLLING PROJECT ID 0047-06-161

DISTRICT Dallas  
HIGHWAY US 75

COUNTY Collin

CONTROL SECTION JOB				0047-06-161		TOTAL EST.	TOTAL FINAL
PROJECT ID				A00062370			
COUNTY				Collin			
HIGHWAY				US 75			
ALT	BID CODE	DESCRIPTION	UNIT	EST.	FINAL		
	3077-6013	SP MIXESSP-CSAC-B PG64-22	TON	372.000		372.000	
	3077-6075	TACK COAT	GAL	406.000		406.000	
	6001-6002	PORTABLE CHANGEABLE MESSAGE SIGN	EA	2.000		2.000	
	6004-6031	ITS COM CBL (ETHERNET)	LF	90.000		90.000	
	6010-6005	CCTV MOUNT (POST)	EA	1.000		1.000	
	6010-6012	RELOCATE CCTV FIELD EQUIPMENT	EA	1.000		1.000	
	6016-6006	ITS MULTI-DUCT CND (PVC-40)	LF	4,850.000		4,850.000	
	6016-6007	ITS MULTI-DUCT CND (PVC-40)(BORE)	LF	1,350.000		1,350.000	
	6027-6003	CONDUIT (PREPARE)	LF	1,630.000		1,630.000	
	6027-6008	GROUND BOX (PREPARE)	EA	5.000		5.000	
	6028-6002	INSTALL DMS (FOUNDATION MTD CABINET)	EA	1.000		1.000	
	6048-6001	RE PM W/RET REQ TY I (W)4"(BRK)	LF	3,120.000		3,120.000	
	6048-6002	RE PM W/RET REQ TY I (W)4"(SLD)	LF	24,931.000		24,931.000	
	6048-6003	RE PM W/RET REQ TY I (W)6"(BRK)	LF	7,720.000		7,720.000	
	6048-6006	RE PM W/RET REQ TY I (Y)4"(SLD)	LF	28,785.000		28,785.000	
	6062-6042	RELOCATE ITS RADIO	EA	2.000		2.000	
	6064-6055	ITS POLE (60 FT)(90 MPH)	EA	1.000		1.000	
	6064-6088	ITS POLE MNT CAB (TY 3)(CONF 1)	EA	1.000		1.000	
	6093-6010	REMOVE EXIST FIB OPT DMS SYS(TY-2)	EA	1.000		1.000	
	6185-6002	TMA (STATIONARY)	DAY	130.000		130.000	
	6185-6003	TMA (MOBILE OPERATION)	HR	20.000		20.000	
	6186-6006	ITS GND BOX(PCAST) TY 1 (243660)W/APRN	EA	11.000		11.000	
	6186-6025	REMOVE ITS GROUND BOX	EA	2.000		2.000	
	6304-6006	ITS RVSD (DC & WWA) (RELOCATE)	EA	1.000		1.000	
	6476-6002	Relocate High Mast Lighting Assembly	EA	2.000		2.000	
	16	MATERIAL FURNISHED BY THE STATE (PARTICIPATING)	LS	1.000		1.000	
	18	LAW ENFORCEMENT: CONTRACTOR FORCE ACCOUNT WORK (PARTICIPATING)	LS	1.000		1.000	
		SAFETY CONTINGENCY: CONTRACTOR FORCE ACCOUNT WORK (PARTICIPATING)	LS	1.000		1.000	
		EROSION CONTROL MAINTENANCE: CONTRACTOR FORCE ACCOUNT WORK (PART)	LS	1.000		1.000	

 REPLACED 5/18/2022



DISTRICT	COUNTY	CCSJ	SHEET
Dallas	Collin	0047-06-161	24F

DATE: 5/11/2022 TIME: 9:42:08 AM FILE: p:\t\tdot\projectwiseonline.com\TXDOT5\Documents\18 - DAL\Design Projects\004706161\4 - Design\Plan Set\1 - General\Summary Sheet

SUMMARY OF INTERIOR DRAINAGE ITEMS		CSJ: 0047-06-161															
LOCATION	402 6001	432 6001	464 6005	464 6007	464 6008	465 6006	465 6007	465 6014	465 6015	465 6016	465 6030	465 6031	465 6032	465 6071	465 6178	465 6515	465 6562
	TRENCH EXCAVATION PROTECTION	RIPRAP (CONC) (4 IN)	RC PIPE (CL 111) (24 IN)	RC PIPE (CL 111) (30 IN)	RC PIPE (CL 111) (36 IN)	JCTBOX (COMP L) (PJB) (4FTX 4FT)	JCTBOX (COMP L) (PJB) (3FTX 5FT)	INLET (COMPL) (PCO ) (3FT) (LEFT)	INLET (COMPL) (PCO ) (3FT) (RIGHT)	INLET (COMPL) (PCO ) (3FT) (BOTH)	INLET (COMPL) (PCU ) (3FT) (LEFT)	INLET (COMPL) (PCU ) (3FT) (RIGHT)	INLET (COMPL) (PCU ) (3FT) (BOTH)	INLET (COMPL) (PS L) (RC) (4FTX4 FT)	INLET (COMPL) (TY MSE1)	JUNCT BOX (COMPL) (JB ) (5FT X 3FT) (FTW)	INL (CMP) (PA ZD-CZ) (FG) (5 FTX5FT-4FTX 4FT)
	LF	CY	LF	LF	LF	EA	EA	EA	EA	EA	EA	EA	EA		EA	EA	EA
NFA	680		1162			4		2	2	1			1		4		
NFB	219		526					4	1	1							
NFC	261		563			3			3				2		3		
NFD	297	2	274													1	3
SBA	92		92														
SBB	51		46							2							
SBC	1247		1144	123							9						
SBD	622		710										4	1			
SFA	601		777				1	5	1	1							
SFB	153		163						2								
SFC	1118		1117						1	6							
SFD			185					1									
SFE	762		1305	116		4		10	3	3					4		
SFF	1259		504	235	966	6	1	5	4	1				1	6		
NBA	291		285										2				
NBB	1109		916	153								9					
NBC	1480		660	844									12				1
TOTALS	10242	2	10429	1471	966	17	2	27	17	15	9	9	21	2	17	1	4

SUMMARY OF EXTERIOR DRAINAGE ITEMS		CSJ: 0047-06-161											
LOCATION	402 6001	432 6002	432 6030	450 6103	462 6003	462 6014	462 6019	462 6178	466 6152	466 6180	466 6182	466 6183	480 6001
	TRENCH EXCAVATION PROTECTION	RIPRAP (CONC) (5 IN)	RIPRAP (STONE COMMON) (GR OUT) (12 IN)	RAIL (TY PR11)	CONC BOX CULV (4 FT X 2 FT)	CONC BOX CULV (7 FT X 3 FT)	CONC BOX CULV (8 FT X 4 FT)	CONC BOX CULV (5 FT X 4 FT) (MOD)	WINGWALL (FW - 0) (HW=5 FT)	WINGWALL (PW - 1) (HW=5 FT)	WINGWALL (PW - 1) (HW=7 FT)	WINGWALL (PW - 1) (HW=8 FT)	CLEAN EXIST CULVERTS
	LF	CY	CY	LF	LF	LF	LF	LF	EA	EA	EA	EA	EA
CULVERT 1B		2.5						8					1
CULVERT 1A	325		35	36	1029				1				
CULVERT 1	48	16		48			104				1		1
CULVERT 2	99		73	51		314			1			1	
TOTALS	472	18.5	108	135	1029	314	104	8	1	1	1	1	2

© 2022

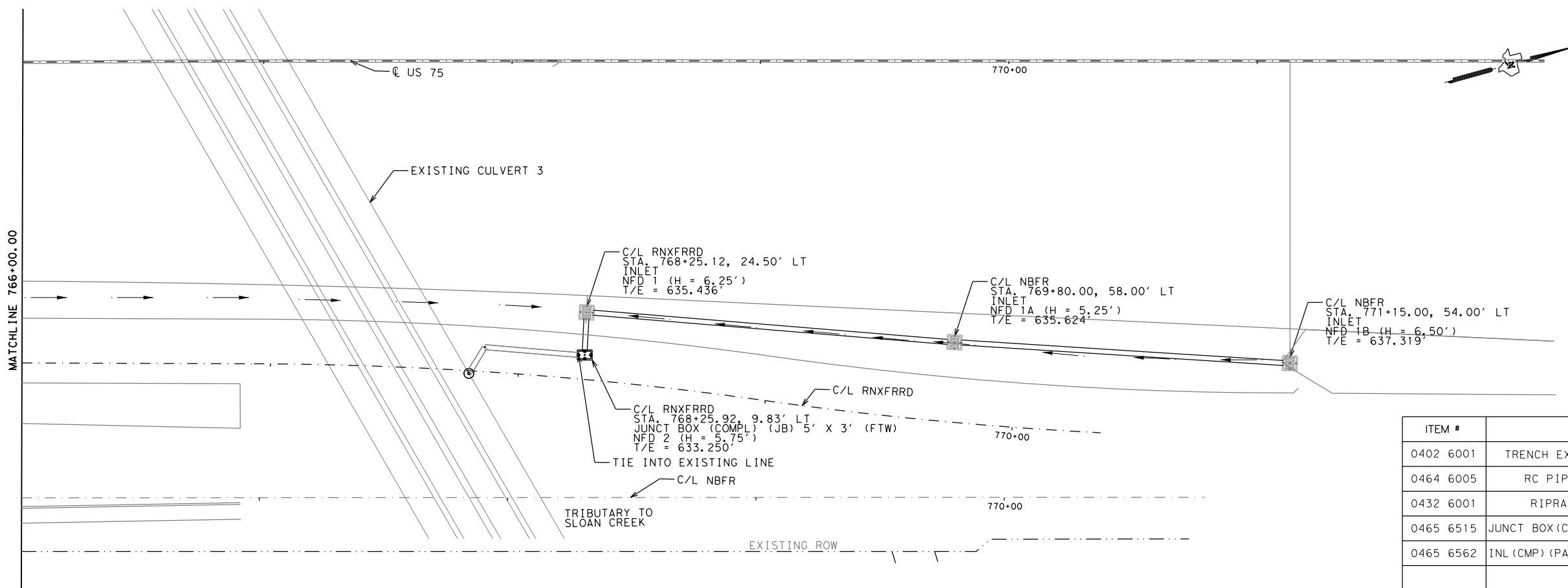
**US 75**  
**AT RIDGEVIEW DR**  
**SUMMARY SHEETS**  
**(DRAINAGE)**

SHEET 4 OF 7

DESIGN MSB	FED. RD. DIV. NO. 6	FEDERAL AID PROJECT NO. SEE TITLE SHEET		HIGHWAY NO. US 75
GRAPHICS MSB	STATE	DISTRICT	COUNTY	SHEET NO.
CHECK	TEXAS	DALLAS	COLLIN	28
CHECK	CONTROL	SECTION	JOB	
	0047	06	161	

**REVISION DATE**  
 5/18/2022

DATE: 5/11/2022 TIME: 9:38:20 AM FILE: p:\t\tdot\project\wiseonline.com\TXDOT15\Documents\18 - DAL\Design Projects\004706161\4 - Design\Plan\_Set\5. Drainage\Interior Dr



0 25 50

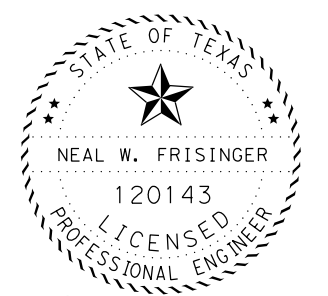
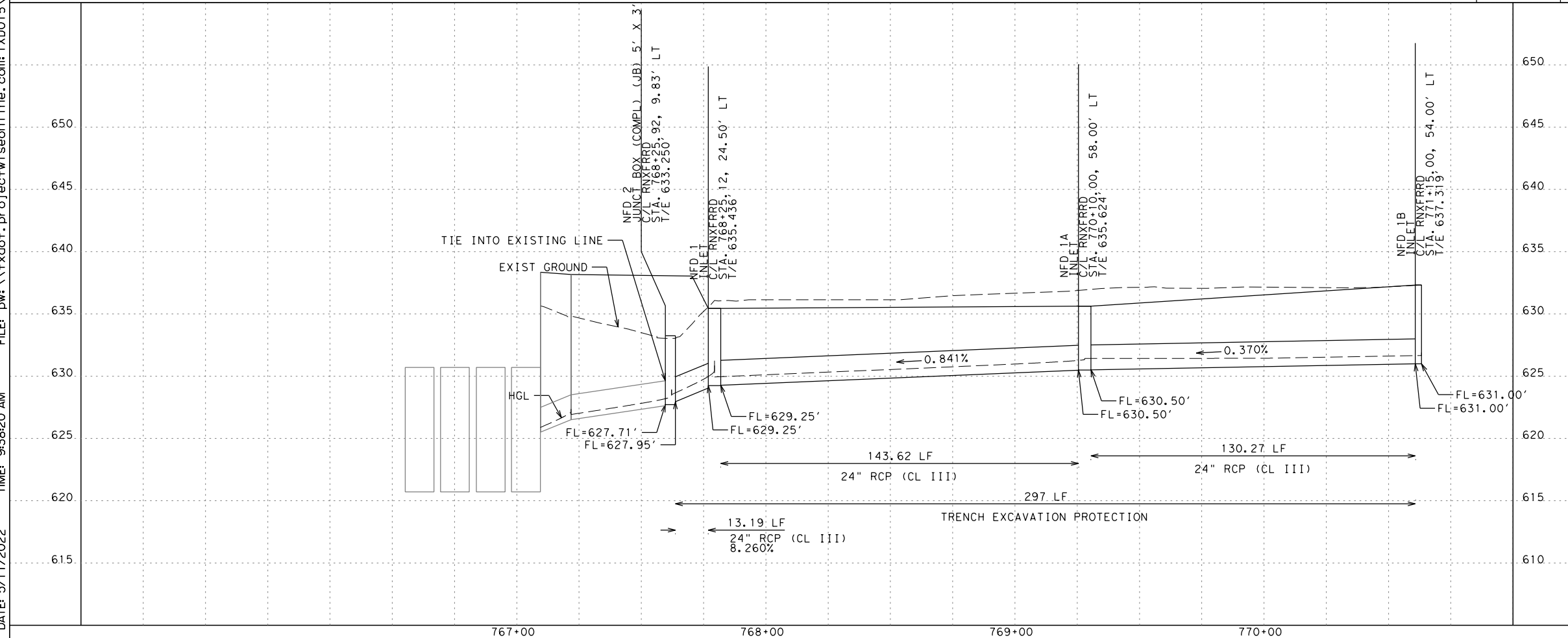
LEGEND

- DITCH FLOW LINE
- STORM SEWER
- INLET (COMPL) (PCO) (3FT) (RIGHT)
- INLET (COMPL) (PCO) (3FT) (LEFT)
- INLET (COMPL) (PCO) (3FT) (BOTH)
- INLET (COMPL) (PCU) (3FT) (BOTH)
- INLET (COMPL) (TY H)
- MANHOLE (COMPL) (TY MH-M)

NOTES:  
SEE CULVERT LAYOUTS FOR CULVERT PLAN AND PROFILE INFORMATION.  
QUANTITIES INCLUDE LATERALS.

ITEM #	DESCRIPTION	UNIT	SHEET TOTAL
0402 6001	TRENCH EXCAVATION PROTECTION	LF	297
0464 6005	RC PIPE (CL III) (24IN)	LF	274
0432 6001	RIPRAP (CONC) (4IN)	EA	2
0465 6515	JUNCT BOX (COMPL) (JB) (5FTX3FT) (FTW)	EA	1
0465 6562	INL (CMP) (PAZD-CZ) (FG) (5FTX5FT-4FTX4FT)	EA	3

REVISION DATE  
5/18/2022



Neal Frisinger, P.E.  
5/11/2022



US 75  
AT RIDGEVIEW DR  
**STORM SEWER PLAN/PROFILE  
NETWORK NFD**

SCALE: 1"=50'-H  
1"=10'-V

SHEET 1 OF 1

DESIGN	FED. RD. DIV. NO.	FEDERAL AID PROJECT NO.		HIGHWAY NO.
ATH	6	SEE TITLE SHEET		US 75
GRAPHICS				
ATH	STATE	DISTRICT	COUNTY	SHEET NO.
CHECK	TEXAS	DALLAS	COLLIN	
CHECK	CONTROL	SECTION	JOB	354
	0047	06	161	