

STATE OF TEXAS
DEPARTMENT OF TRANSPORTATION

PLANS OF PROPOSED
STATE MAINTENANCE CONTRACT

MAINTENANCE PROJECT NO. RMC 647263001
CSJ 6472-63-001
US 287, ETC.

MOWING HIGHWAY RIGHT OF WAY

LIMITS OF WORK: CHILDRESS, HALL & BRISCOE

FED. DIV. NO.	MAINTENANCE PROJECT NO.	SHEET NO.	
6	RMC 6472-63-001	1	
STATE	STATE DIST. NO.	COUNTY	
TEXAS	CHS	CHILDRESS, ETC.	
CONT.	SECT.	JOB	HIGHWAY NO.
6472	63	001	US 287, ETC.

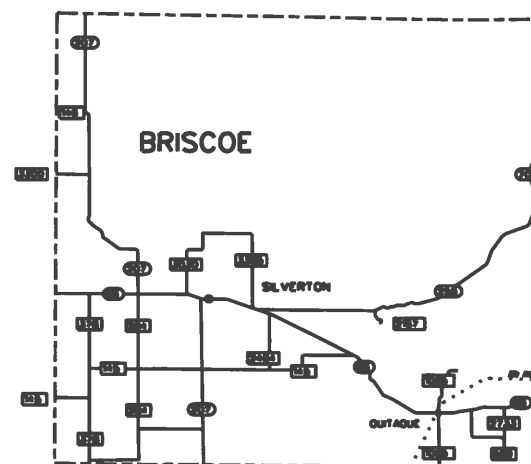
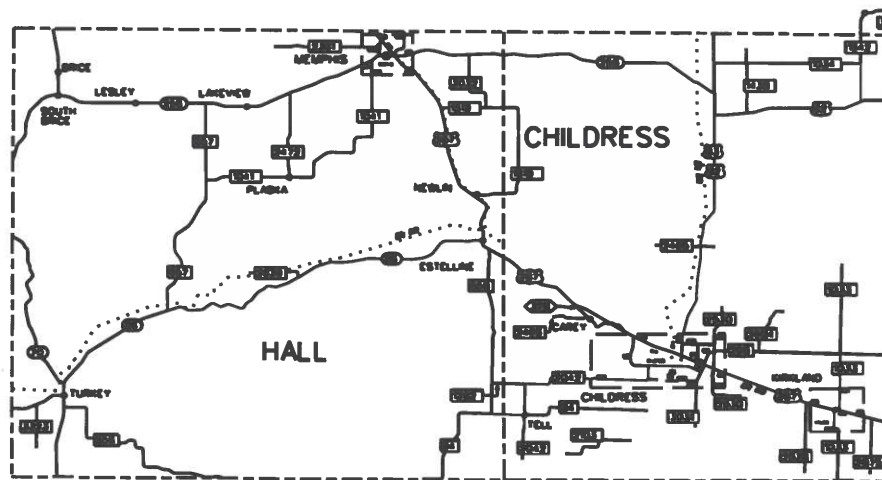
AREA OF DISTURBED SOIL - 0.0 ACRES

INDEX OF SHEETS

1	TITLE SHEET
2-3	GENERAL NOTES
4	E&O SHEET
5-7	MOWING LIMITS
8	TRAFFIC CONTROL
9-10	BC SHEETS

THE STANDARD SHEETS SPECIFICALLY IDENTIFIED FOR THIS PROJECT HAVE BEEN SELECTED BY ME OR UNDER MY RESPONSIBLE SUPERVISION AS BEING APPLICABLE TO THIS PROJECT.

Matthew J. Herbstritt, P.E. 8/5/24
Matthew Herbstritt, P.E. DATE



FINAL PLANS

CONTRACTOR NAME: _____
 CONTRACTOR ADDRESS: _____

 LETTING DATE: _____
 DATE TIME CHARGES BEGAN: _____
 DATE WORK BEGAN: _____
 DATE WORK COMPLETED: _____
 DATE OF WORK ACCEPTANCE: _____

I, _____ P.E. DO HEREBY CERTIFY
 THAT THE CONSTRUCTION WORK WAS PERFORMED IN ACCORDANCE WITH
 THE PLANS, CONTRACT, AND CHANGES THERETO.

_____ AREA ENGINEER _____ DATE

LETTING DATE _____
DATE ACCEPTED _____

COUNTY CHILDRESS, ETC.
Hwy. No. US 287, ETC.
PROJ. NO. RMC 647263001
CONTRACTOR _____

SPECIFICATIONS ADOPTED BY THE TEXAS DEPARTMENT OF TRANSPORTATION, SEPTEMBER 1, 2024 AND SPECIFICATION ITEMS LISTED AND DATED AS FOLLOWS, SHALL GOVERN ON THIS PROJECT:

EQUATIONS: NONE
EXCEPTIONS: NONE
RAILROAD CROSSINGS: NONE

TEXAS DEPARTMENT OF TRANSPORTATION

RECOMMENDED FOR LETTING: 8/5/24
Matthew J. Herbstritt, P.E.
DIRECTOR OF OPERATIONS

Project: RMC 6472-63-001
County: CHILDRESS

Control: 6472-63-001
Highway: US0287

Project: RMC 6472-63-001
County: CHILDRESS

Control: 6472-63-001
Highway: US0287

General Notes:

Project Description - This project shall consist of four (4) cycles of full width mowing over a two-year period, beginning with the fall 2024 cycle, and extending through the summer 2026 cycle for Childress, Briscoe and Hall Counties.

Contractor questions on this project are to be addressed to the following individual:

Matthew Herbstritt P.E
Director of Operations
940-937-7283 – Office
Matthew.Herbstritt@txdot.gov

Questions may be submitted via the Letting Pre-Bid Q&A web page. This webpage can be accessed from the Notice to Contractors dashboard located at the following Address:
<https://tableau.txdot.gov/views/ProjectInformationDashboard/NoticetoContractors>

All contractor questions will be reviewed by the Engineer. All questions and any corresponding responses that are generated will be posted through the same Letting Pre-Bid Q&A web page.

The Letting Pre-Bid Q&A web page for each project can be accessed by using the dashboard to navigate to the project you are interested in by scrolling or filtering the dashboard using the controls on the left. Hover over the blue hyperlink for the project you want to view the Q&A for and click on the link in the window that pops up.

The plans may be viewed at the Contract Administration Office, Childress District Office, 7599 US 287, Childress, Texas, 79201

The contractor shall designate an on-site representative who has full authority to speak and make decisions on his behalf.

Each Contract awarded by the Department stands on its own and as such, is separate from other contracts. A Contractor awarded multiple contracts, must be capable and sufficiently staffed to concurrently process all contracts at the same time.

Item 2 – Instruction to Bidders

View the plans on-line or download from the web at:
<https://www.txdot.gov/business/letting-bids/plans-online.html>.

Order plans from any of the plan reproduction companies shown on the web at:
http://www.dot.state.tx.us/business/contractors_consultants/repro_companies.htm

Item 4 – Scope of Work

This contract may be extended for an additional two-year period if the contractor has satisfactorily fulfilled the terms and conditions of the contract and based on evidence of satisfactory contractor performance per Special Provision 004-002.

The extension must be agreed upon in writing by both parties to the contract. The extended contract may be for additional quantities up to the original bid quantities plus any quantities added by an approved change order. The extension shall meet the terms and conditions of the original contract or any mutually agreed modifications to the said terms and conditions by one or more cumulative change orders.

Upon renewal, original unit prices may be adjusted to reflect changes in the published Federal Consumer Price Index since the time the contract was let.

Item 8 - Prosecution and Progress

If the contractor is awarded multiple contracts, sufficient equipment and personnel will be required to complete the work on all contracts should simultaneous work orders be issued.

Working days will be computed and charged in accordance with Article 8.3.1.4 Standard Workweek.

The number of working days for the contract was calculated based on a production rate of 200 acres per day, resulting in 26 working days allowed per cycle. Any fraction of a working day will be rounded up to the nearest whole acre.

This contract includes work required under multiple work orders. A pre-work conference is mandatory and will be held by the Engineer after issuance of a work order for the first cycle. The Engineer will contact the contractor by email or certified letter regarding each mowing cycle. The contractor will provide a work schedule and plan (including number of mowers, trimmers, etc.) for the Engineer to review and approve, and provide names of contact people with phone numbers. The contractor will be required to contact each maintenance section within the contract prior to beginning work in that county. When work is satisfactorily completed and inspected on each cycle, a time suspension letter will be issued.

Item 502 – Barricades, Signs and Traffic Handling

Barricades, signs, and traffic handling shall be in accordance with the Texas MUTCD, the plans, and as directed by the Engineer. This work shall be subsidiary to the contract.

Item 730 – Roadside Mowing

The mowing cycles include work for the fall cycle (2024), the summer cycle (2025), the fall cycle (2025), and the summer cycle (2026). Work for the summer cycle is anticipated to begin after June 1st.

Project: RMC 6472-63-001
County: CHILDRESS

Control: 6472-63-001
Highway: US0287

All hand trimming associated with a cycle of work must be finished before payment is made for a complete cycle of work.

All appurtenances (signs, guardrail, culvert head walls, etc.) damaged by the contractor will be deducted from the amount of work performed at the following rates:

- Delineators \$ 100
- Small Signs \$ 700
- Mailbox Supports \$ 165-500
- Mailbox* *

* The contractor shall provide the mailbox for replacement of equal or better quality than the one damaged.

Any damages not listed above will be charged at replacement cost.

TxDOT will notify both the contractor and surety of any work not performed in a timely and satisfactory manner.

Mowing through construction projects may be necessary and will be coordinated with the Engineer and construction contractor.

No work shall be performed before sunrise or after sunset.



Estimate & Quantity Sheet

CONTROLLING PROJECT ID 6472-63-001

DISTRICT Childress

COUNTY Childress

HIGHWAY US0287

CONTROL SECTION JOB				6472-63-001		TOTAL EST.	TOTAL FINAL
PROJECT ID				A00212015			
COUNTY				Childress			
HIGHWAY				US0287			
ALT	BID CODE	DESCRIPTION	UNIT	EST.	FINAL		
	730-7022	FULL - WIDTH MOWING	AC	20,280.000		20,280.000	

Mowing Limits for Childress County

Date:
 Maintenance Section: 01
 CONTROL RMC 647263001
 TOTAL FOR THIS CONTRACT: FOUR FULL WIDTH MOW CYCLES (7,644 ACRES)

County	Tract No.	HWY	Description	RM To RM	Length in miles	Mow Acres/Cycle	Wrk Days Per Type I?
CHILDRESS	1	FM94	From: JCT US62, WEST To: HALL C/L	158-168	9.20	87	0.44
..	2	FM164	From: JCT US287 WEST OF CHILDRESS To: JCT US287 IN CHILDRESS	154-161	6.80	52	0.26
..	3	FM268	From: JCT US287 IN CHILDRESS, EAST To: HARDEMAN C/L	388-401	12.30	108	0.54
..	4	FM401	From: JCT FM3181, SOUTH To: JCT US287 IN CHILDRESS	154-156	1.20	7	0.04
..	5	FM1033	From: COTTLE C/L, NORTH To: END OF PAVEMENT	148-163	14.80	129	0.65
..	6	FM1282	From: HALL C/L, EAST To: JCT FM2042	378-380	1.50	14	0.07
..	7	FM2042	From: JCT FM3031, WEST To: THROUGH TELL END OF PAVEMENT	154-170	16.00	136	0.68
..	8	FM2103	From: JCT US62, WEST To: END OF PAVEMENT	380-387	4.80	44	0.22
..	9	FM2465	From: END OF PAVEMENT To: END OF PAVEMENT	384-388	3.70	36	0.18
..	10	FM2466	From: JCT LP328 IN CAREY, WEST To: BAYLOR LAKE	378-381	2.30	22	0.11
..	11	FM2530	From: END OF PAVEMENT To: END OF PAVEMENT	150-158	7.70	73	0.37
..	12	FM2638	From: JCT US287, SOUTH To: END OF PAVEMENT	158-163	4.70	46	0.23
..	13	FM2875	From: JCT US287, SOUTH To: END OF PAVEMENT	160-164	3.70	36	0.18
..	14	FM2884	From: JCT FM268, NORTH To: END OF PAVEMENT	150-154	3.60	35	0.18
..	15	FM3031	From: JCT 164, SOUTH To: END OF PAVEMENT	156-160	3.80	29	0.15
..	16	FM3181	From: JCT US62, EAST To: JCT FM2530	388-390	2.00	20	0.10
..	17	FM3468	From: JCT FM164, SOUTH To: JCT FM2042	156-157	1.00	10	0.05
..	18	LP328	From: JCT US287, EAST To: JCT US287	382-385	2.80	27	0.14
COTTLE	19	FM94	From: HALL C/L To: MOTLEY C/L	176-179	2.30	23	0.12
..	20	FM1033	From: CHILDRESS C/L, SOUTH To: JCT FM104	164-166	1.70	16	0.08
HALL	21	FM658	From: US287, SOUTH To: FM94	148-160	11.20	106	0.53
..	22	FM94	From: CHILDRESS/HALL C/L To: COTTLE/HALL C/L	168-176	7.50	71	0.36
..	23	FM1282	From: FM658, EAST To: CHILDRESS C/L	376-377	0.70	7	0.04
..	24	US62	From: COTTLE C/L, NORTH To: OKLAHOMA STATE LINE	470-507	36.60	330	1.65
..	25	US83	From: JCT SH256, SOUTH To: JCT US62 (HOLLIS "Y")	154-156	2.00	33	0.17
..	26	US287	From: HALL C/L, EAST To: HARDEMAN C/L	218-245	24.70	381	1.91
HALL	27	US287	From: SH 86 IN ESTELLINE To: CHILDRESS C/L	216-218	1.90	33	0.17
Totals					190.50	1911	10.56

• MEDIANS ARE INCLUDED IN QUANTITIES.



CHILDRESS CO. MOWING LIMITS

© 2024 by Texas Department of Transportation

DRAWN:	FED. DIV. NO.	FEDERAL AID PROJECT NO.	SHEET NO.
DATE:	6	RMC 647263001	5
CHECKED:	STATE DIST. NO.	COUNTY	
DATE:	TEXAS	CHILDRESS, etc.	
REVISED:	CONT.	SECT.	JOB
DATE:	6472	63	001
			HIGHWAY NO.
			US 287, etc.

Mowing Limits for Briscoe County

Date:
 Maintenance Section: 08
 CONTROL RMC 647263001
 TOTAL FOR THIS CONTRACT: FOUR FULL WIDTH MOW CYCLES(5,476 ACRES)

County	Tract No.	HWY	Description	RM To RM	Length in miles	Mow Acres/Cycle	Wrk Days Per Type 1?
BRISCOE	1	FM145	From: SWISHER C/L, EAST To: JCT OF SH86	322-342	19.20	173	0.6
..	2	FM146	From: JCT SH207, WEST To: SWISHER C/L	338-340	2.00	17	0.1
..	3	FM284	From: JCT SH86, SOUTH To: END OF PAVEMENT	152-161	9.00	85	0.3
..	4	FM378	From: JCT SH86, SOUTH To: FLOYD C/L	151-163	11.40	82	0.3
..	5	FM599	From: JCT SH86, SOUTH To: JCT FM2733	158-162	3.90	28	0.1
..	6	FM1065	From: FLOYD C/L, NORTH To: END OF PAVEMENT	156-163	7.30	58	0.2
..	7	FM2464	From: JCT SH86, SOUTH To: JCT FM145	154-158	3.80	35	0.1
..	8	FM2733	From: JCT SH86, SOUTH To: JCT FM599	158-161	2.20	21	0.1
..	9	FM3030	From: JCT SH86, NORTH To: END OF PAVEMENT	148-152	4.00	37	0.1
..	10	FM3300	From: JCT SH207, WEST To: SWISHER C/L	316-318	2.00	19	0.1
..	11	FM3365	From: JCT SH86, NORTH To: END OF PAVEMENT	150-155	4.90	45	0.2
..	12	SH 86	From: SWISHER C/L, EAST To: HALL C/L	320-353	32.90	299	1.0
..	13	SH207	From: ARMSTRONG C/L, SOUTH To: FLOYD C/L	152-184	31.80	305	1.0
..	14	SH256	From: JCT SH86, EAST To: JCT SH70	330-350	19.50	165	0.6
Totals					153.90	1369	6



BRISCOE CO. MOWING LIMITS

© 2024 by Texas Department of Transportation

DRAWN:	FED. RD. DIV. NO.	FEDERAL AID PROJECT NO.		SHEET NO.
DATE:	6	RMC 647263001		6
CHECKED:	STATE	STATE DIST. NO.	COUNTY	
DATE:	TEXAS	CHS	CHILDRESS, etc.	
REVISED:	CONT.	SECT.	JOB	HIGHWAY NO.
DATE:	6472	63	001	US 287, etc.

Mowing Limits for Hall County

Date:
 Maintenance Section: 012
 CONTROL RMC 647263001
 TOTAL FOR THIS CONTRACT: FOUR FULL WIDTH MOW CYCLES (7,160 ACRES)

County	Tract No.	HWY	Description	RM To RM	Length in miles	Mow Acres/Cycle	Wrk Days Per Type I
HALL	1	FM 657	From: JCT SH256 W LAKEVIEW,SO To: SH 86 EAST OF TURKEY	138-154	15.15	134	0.67
..	2	FM 1041	From: JCT SH 256 W MEMPHIS To: JCT FM 657	136-154	17.50	149	0.75
..	3	FM 1547	From: COLLINGSWORTH C/L S. To: JCT US 287 IN MEMPHIS	144-147	2.14	20	0.10
..	4	FM 1619	From: US 287 S. MEMPHIS E. To: CHILDRESS C/L	138-143	5.80	50	0.25
..	5	FM 2361	From: END OF PAVEMENT EAST To: JCT US 287 IN MEMPHIS	64-71	7.10	54	0.27
..	6	FM 2472	From: JCT SH 256 EAST OF LAKEVIEW SOUTH To: JCT FM 1041	136-142	5.95	38	0.19
..	7	FM 2639	From: JCT SH 86 NORTH & WEST To: END OF PAVEMENT	360-364	3.40	25	0.13
..	8	FM 3032	From: JCT SH 256 EAST OF MEMPHIS SOUTH To: JCT FM 1619	134-139	4.35	40	0.20
..	9	FM 3323	From: JCT SH 86 WEST OF TURKEY SOUTH To: END OF PAVEMENT	158-161	2.90	28	0.14
CHILDRESS	10	FM 1619	From: HALL C/L NORTH To: HALL C/L SOUTH	143-151	9.35	66	0.33
	11	SH 256	From: Jct US 83, WEST To: HALL C/L	388-402	14.00	140	0.70
HALL	12	FM 3517	From: JCT SH 256 AT LAKEVIEW To: END OF PAVEMENT	358-362	4.70	34	0.17
..	13	SH 70	From: JCT SH 256 AT BRICE SOUTH To: BRISCOE C/L 5.63 MILES	145-150	5.63	48	0.24
BRISCOE	14	SH 70	From: HALL/BRISCOE C/L SOUTH OF BRICE To: HALL/BRISCOE C/L NORTH OF TURKEY	150-153	6.25	68	0.34
HALL	15	SH 70	From: BRISCOE C/L To: FM 656 SOUTH OF TURKEY	156-171	12.25	75	0.38
..	16	SH 86	From: BRISCOE C/L To: JCT US 287 IN ESTELLINE	354-388	34.10	250	1.25
..	17	SH 256	From: JCT SH 70 IN BRICE, EAST To: CHILDRESS C/L	359-388	27.50	223	1.49
DONLEY	18	US 287	From: SH 203 IN HEDLEY SOUTH & EAST To: HALL C/L	189-200	10.70	170	0.85
HALL	19	US 287	From: DONLEY C/L WEST OF MEMPHIS To: JCT SH 86 IN ESTELLINE	200-216	16.00	178	0.89
Totals					204.77	1790	9

• MEDIANS ARE INCLUDED IN QUANTITIES.



HALL CO. MOWING LIMITS

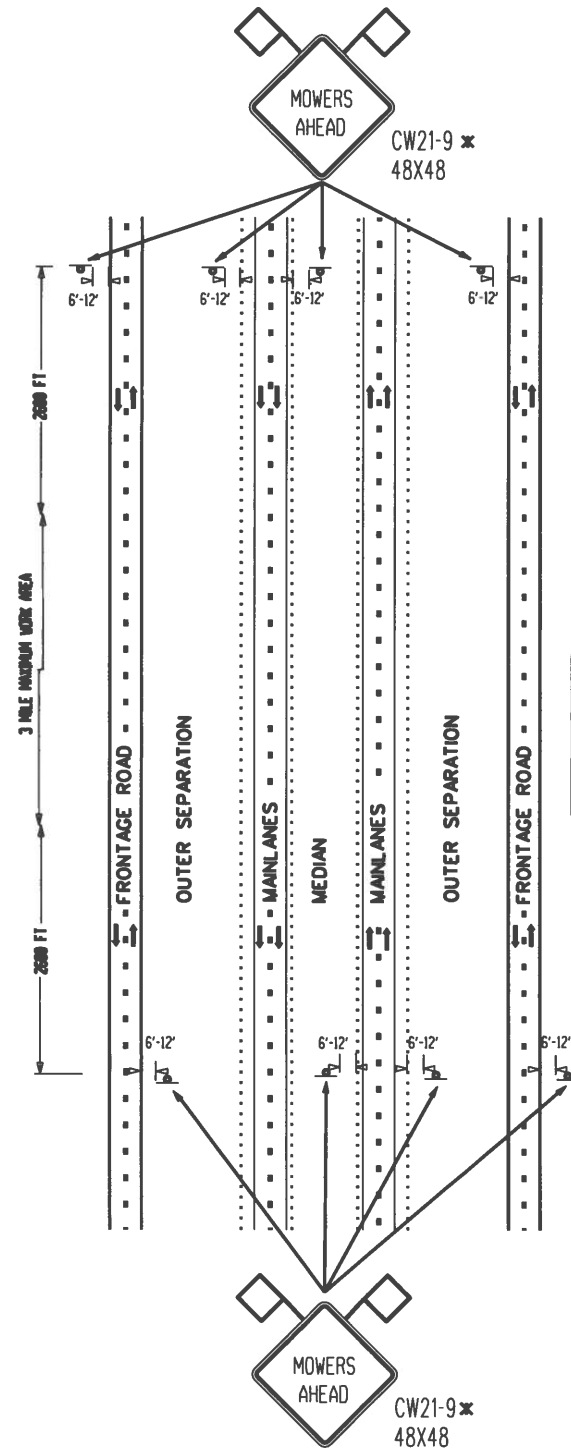
© 2024 by Texas Department of Transportation

DRAWN:	FED. DIV. NO.	FEDERAL AID PROJECT NO.	SHEET NO.
DATE:	6	RMC 647263001	7
CHECKED:	STATE	STATE DIST. NO.	COUNTY
DATE:	TEXAS	CHS	CHILDRESS, etc.
REVISED:	CONT.	SECT.	JOB
DATE:	6472	63	001
			US 287, etc.

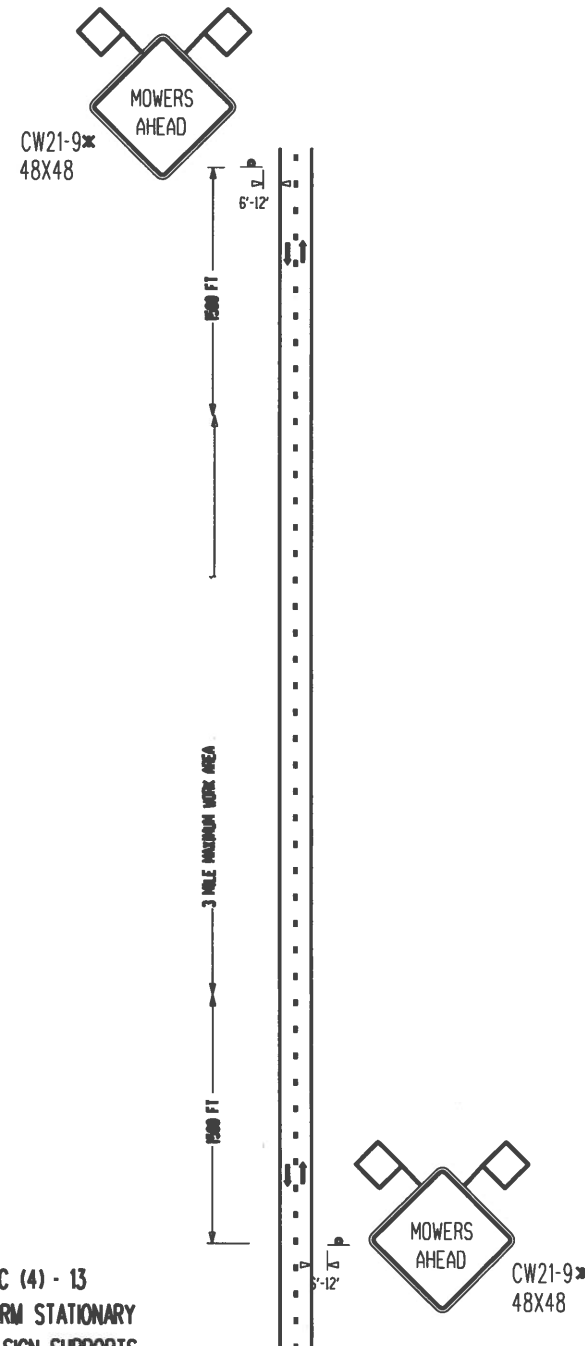
TRAFFIC CONTROL PLAN

TYPICAL WARNING SIGN ARRANGEMENT

MOWING HIGHWAY RIGHT OF WAY



**MULTI-LANE
DIVIDED HIGHWAY**



* SEE BC (4) - 13
SHORT TERM STATIONARY
PORTABLE SIGN SUPPORTS

UNDIVIDED HIGHWAY



THE STANDARD SHEETS SPECIFICALLY IDENTIFIED ABOVE
HAVE BEEN SELECTED BY ME OR UNDER MY RESPONSIBLE
SUPERVISION AS BEING APPLICABLE TO THIS PROJECT.

Matthew J. Herbstritt, PE

8/5/24
DATE



TRAFFIC CONTROL

© 2024 by Texas Department of Transportation

DRAWN:	FED. AID DIST. NO. 6	FEDERAL AID PROJECT NO. RMC 647263001	SHEET NO. 8
CHECKED:	STATE TEXAS	STATE DIST. NO. CHS	COUNTY CHILDRESS, etc.
REVISED:	CONT. 6472	SECT. 63	JOB 001
DATE:	HIGHWAY NO. US 287, etc.		

BARRICADE AND CONSTRUCTION (BC) STANDARD SHEETS GENERAL NOTES:

1. The Barricade and Construction Standard Sheets (BC sheets) are intended to show typical examples for placement of temporary traffic control devices, construction pavement markings, and typical work zone signs. The information contained in these sheets meet or exceed the requirements shown in the "Texas Manual on Uniform Traffic Control Devices" (TMUTCD).
2. The development and design of the Traffic Control Plan (TCP) is the responsibility of the Engineer.
3. The Contractor may propose changes to the TCP that are signed and sealed by a licensed professional engineer for approval. The Engineer may develop, sign and seal Contractor proposed changes.
4. The Contractor is responsible for installing and maintaining the traffic control devices as shown in the plans. The Contractor may not move or change the approximate location of any device without the approval of the Engineer.
5. Geometric design of lane shifts and detours should, when possible, meet the applicable design criteria contained in manuals such as the American Association of State Highway and Transportation Officials (AASHTO), "A Policy on Geometric Design of Highways and Streets," the TxDOT "Roadway Design Manual" or engineering judgment.
6. When projects abut, the Engineer(s) may omit the END ROAD WORK, TRAFFIC FINES DOUBLE, and other advance warning signs if the signing would be redundant and the work areas appear continuous to the motorists. If the adjacent project is completed first, the Contractor shall erect the necessary warning signs as shown on these sheets, the TCP sheets or as directed by the Engineer. The BEGIN ROAD WORK NEXT X MILES sign shall be revised to show appropriate work zone distance.
7. The Engineer may require duplicate warning signs on the median side of divided highways where median width will permit and traffic volumes justify the signing.
8. All signs shall be constructed in accordance with the details found in the "Standard Highway Sign Designs for Texas," latest edition. Sign details not shown in this manual shall be shown in the plans or the Engineer shall provide a detail to the Contractor before the sign is manufactured.
9. The temporary traffic control devices shown in the illustrations of the BC sheets are examples. As necessary, the Engineer will determine the most appropriate traffic control devices to be used.
10. Where highway construction or maintenance work is being undertaken, other than mobile operations as defined by the Texas Manual on Uniform Traffic Control Devices, CSJ limit signs are required. CSJ limit signs are shown on BC(2). The OBEY WARNING SIGNS STATE LAW sign, STAY ALERT TALK OR TEXT LATER and the WORK ZONE TRAFFIC FINES DOUBLE sign with plaque shall be erected in advance of the CSJ limits. The BEGIN ROAD WORK NEXT X MILES, CONTRACTOR and END ROAD WORK signs shall be erected at or near the CSJ limits. For mobile operations, CSJ limit signs are not required.
11. Traffic control devices should be in place only while work is actually in progress or a definite need exists.
12. The Engineer has the final decision on the location of all traffic control devices.
13. Inactive equipment and work vehicles, including workers' private vehicles must be parked away from travel lanes. They should be as close to the right-of-way line as possible, or located behind a barrier or guardrail, or as approved by the Engineer.

WORKER SAFETY NOTES:

1. Workers on foot who are exposed to traffic or to construction equipment within the right-of-way shall wear high-visibility safety apparel meeting the requirements of ISEA "American National Standard for High-Visibility Apparel," or equivalent revisions, and labeled as ANSI 107-2004 standard performance for Class 2 or 3 risk exposure. Class 3 garments should be considered for high traffic volume work areas or night time work.
2. Except in emergency situations, flagger stations shall be illuminated when flagging is used at night.

COMPLIANT WORKZONE TRAFFIC CONTROL DEVICES

1. Only pre-qualified products shall be used. The "Compliant Work Zone Traffic Control Devices List" (CWZTCD) describes pre-qualified products and their sources.
2. Work zone traffic control devices shall be compliant with the Manual for Assessing safety Hardware (MASH).

<p>THE DOCUMENTS BELOW CAN BE FOUND ON-LINE AT http://www.txdot.gov</p>
COMPLIANT WORK ZONE TRAFFIC CONTROL DEVICES LIST (CWZTCD)
DEPARTMENTAL MATERIAL SPECIFICATIONS (DMS)
MATERIAL PRODUCER LIST (MPL)
ROADWAY DESIGN MANUAL - SEE "MANUALS (ONLINE MANUALS)"
STANDARD HIGHWAY SIGN DESIGNS FOR TEXAS (SHSD)
TEXAS MANUAL ON UNIFORM TRAFFIC CONTROL DEVICES (TMUTCD)
TRAFFIC ENGINEERING STANDARD SHEETS

DISCLAIMER: The use of this standard is governed by the "Texas Engineering Practice Act". No warranty of any kind is made by TxDOT for any purpose whatsoever. TxDOT assumes no responsibility for the conversion of this standard to other formats or for incorrect results or damages resulting from its use.

DATE:
 FILE:

SHEET 1 OF 2



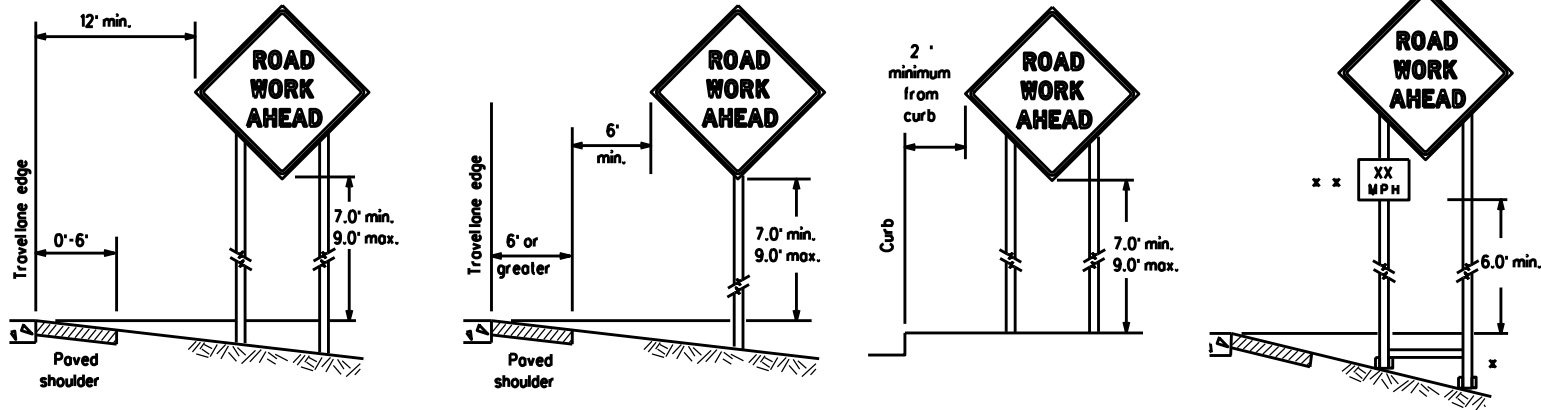
**BARRICADE AND CONSTRUCTION
 GENERAL NOTES
 AND REQUIREMENTS**

BC(1)-21

FILE:	bc-21.dgn	DN:	TxDOT	CK:	TxDOT	DW:	TxDOT	CK:	TxDOT
© TxDOT	November 2002	CONT	SECT	JOB	HIGHWAY				
4-03	7-13	6472	63	001	US 287, ETC.				
9-07	8-14	DIST	COUNTY		SHEET NO.				
5-10	5-21	CHS	CHILDRESS		9				

DISCLAIMER: The use of this standard is governed by the "Texas Engineering Practice Act". No warranty of any kind is made by TxDOT for any purpose whatsoever. TxDOT assumes no responsibility for the conversion of this standard to other formats or for incorrect results or damages resulting from its use.

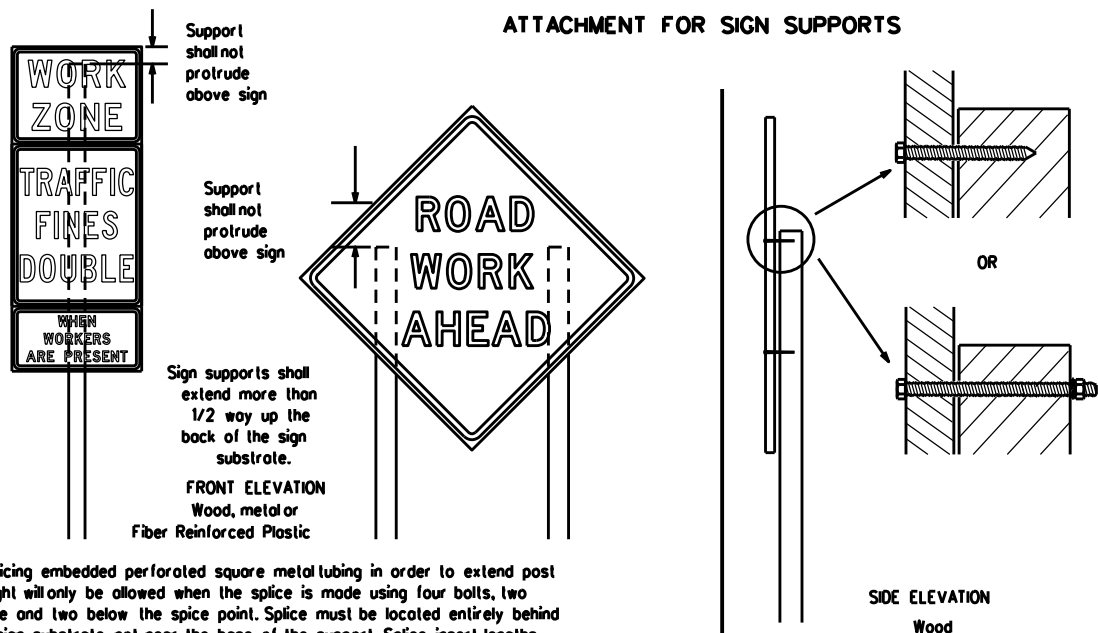
TYPICAL MINIMUM CLEARANCES FOR LONG TERM AND INTERMEDIATE TERM SIGNS



* When placing skid supports on unlevel ground, the leg post lengths must be adjusted so the sign appears straight and plumb. Objects shall NOT be placed under skids as a means of leveling.

* * When plaques are placed on dual-leg supports, they should be attached to the upright nearest the travel lane. Supplemental plaques (advisory or distance) should not cover the surface of the parent sign.

ATTACHMENT FOR SIGN SUPPORTS



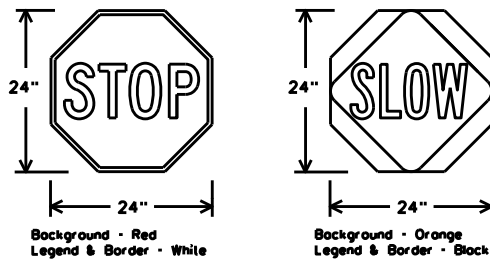
Attachment to wooden supports will be by bolts and nuts or screws. Use TxDOT's or manufacturer's recommended procedures for attaching sign substrates to other types of sign supports

Nails shall NOT be allowed. Each sign shall be attached directly to the sign support. Multiple signs shall not be joined or spliced by any means. Wood supports shall not be extended or repaired by splicing or other means.

Splicing embedded perforated square metal tubing in order to extend post height will only be allowed when the splice is made using four bolts, two above and two below the splice point. Splice must be located entirely behind the sign substrate, not near the base of the support. Splice insert lengths should be at least 5 times nominal post size, centered on the splice and of at least the same gauge material.

STOP/SLOW PADDLES

1. STOP/SLOW paddles are the primary method to control traffic by flaggers. The STOP/SLOW paddle size should be 24" x 24".
2. STOP/SLOW paddles shall be retroreflectized when used at night.
3. STOP/SLOW paddles may be attached to a staff with a minimum length of 6' to the bottom of the sign.
4. Any lights incorporated into the STOP or SLOW paddle faces shall only be as specifically described in Section 6E.03 Hand Signaling Devices in the TMUTCD.



SHEETING REQUIREMENTS (WHEN USED AT NIGHT)		
USAGE	COLOR	SIGN FACE MATERIAL
BACKGROUND	RED	TYPE B OR C SHEETING
BACKGROUND	ORANGE	TYPE B _{TL} OR C _{TL} SHEETING
LEGEND & BORDER	WHITE	TYPE B OR C SHEETING
LEGEND & BORDER	BLACK	ACRYLIC NON-REFLECTIVE FILM

CONTRACTOR REQUIREMENTS FOR MAINTAINING PERMANENT SIGNS WITHIN THE PROJECT LIMITS

1. Permanent signs are used to give notice of traffic laws or regulations, call attention to conditions that are potentially hazardous to traffic operations, show route designations, destinations, directions, distances, services, points of interest, and other geographical, recreational, specific service (LOGO), or cultural information. Drivers proceeding through a work zone need the same, if not better route guidance as normally installed on a roadway without construction.
2. When permanent regulatory or warning signs conflict with work zone conditions, remove or cover the permanent signs until the permanent sign message matches the roadway condition. For details for covering large guide signs see the TS-CD standard.
3. When existing permanent signs are moved and relocated due to construction purposes, they shall be visible to motorists at all times.
4. If existing signs are to be relocated on their original supports, they shall be installed on crashworthy bases as shown on the SMD Standard sheets. The signs shall meet the required mounting heights shown on the BC Sheets or the SMD Standards. This work should be paid for under the appropriate pay item for relocating existing signs.
5. If permanent signs are to be removed and relocated using temporary supports, the Contractor shall use crashworthy supports as shown on the BC standard sheets, TLRS standard sheets or the CWZTCD list. The signs shall meet the required mounting heights shown on the BC, or the SMD standard sheets during construction. This work should be paid for under the appropriate pay item for relocating existing signs.
6. Any sign or traffic control device that is struck or damaged by the Contractor or his/her construction equipment shall be replaced as soon as possible by the Contractor to ensure proper guidance for the motorists. This will be subsidiary to Item 502.

GENERAL NOTES FOR WORK ZONE SIGNS

1. Contractor shall install and maintain signs in a straight and plumb condition and/or as directed by the Engineer.
2. Wooden sign posts shall be painted white.
3. Barricades shall NOT be used as sign supports.
4. All signs shall be installed in accordance with the plans or as directed by the Engineer. Signs shall be used to regulate, warn, and guide the traveling public safely through the work zone.
5. The Contractor may furnish either the sign design shown in the plans or in the "Standard Highway Sign Designs for Texas" (SHSD). The Engineer/Inspector may require the Contractor to furnish other work zone signs that are shown in the TMUTCD but may have been omitted from the plans. Any variation in the plans shall be documented by written agreement between the Engineer and the Contractor's Responsible Person. All changes must be documented in writing before being implemented. This can include documenting the changes in the Inspector's TxDOT diary and having both the Inspector and Contractor initial and date the agreed upon changes.
6. The Contractor shall furnish sign supports listed in the "Compliant Work Zone Traffic Control Device List" (CWZTCD) for small roadside signs. Supports for temporary large roadside signs shall meet the requirements detailed on the Temporary Large Roadside Signs (TLRS) standard sheets. The Contractor shall install the sign support in accordance with the manufacturer's recommendations. If there is a question regarding installation procedures, the Contractor shall furnish the Engineer a copy of the manufacturer's installation recommendations so the Engineer can verify the correct procedures are being followed.
7. The Contractor is responsible for installing signs on approved supports and replacing signs with damaged or cracked substrates and/or damaged or marred reflective sheeting as directed by the Engineer/Inspector.
8. Identification markings may be shown only on the back of the sign substrate. The maximum height of letters and/or company logos used for identification shall be 1 inch.
9. The Contractor shall replace damaged wood posts. New or damaged wood sign posts shall not be spliced.

DURATION OF WORK (as defined by the "Texas Manual Uniform Traffic Control Devices" Part 6)

1. The types of sign supports, sign mounting height, the size of signs, and the type of sign substrates can vary based on the type of work being performed. The Engineer is responsible for selecting the appropriate size sign for the type of work being performed. The Contractor is responsible for ensuring the sign support, sign mounting height and substrate meets manufacturer's recommendations in regard to crashworthiness and duration of work requirements.
 - a. Long-term stationary - work that occupies a location more than 3 days.
 - b. Intermediate-term stationary - work that occupies a location more than one daylight period up to 3 days, or nighttime work lasting more than one hour.
 - c. Short-term stationary - daytime work that occupies a location for more than 1 hour in a single daylight period.
 - d. Short duration - work that occupies a location up to 1 hour.
 - e. Mobile - work that moves continuously or intermittently (stopping for up to approximately 15 minutes.)

SIGN MOUNTING HEIGHT

1. The bottom of Long-term/Intermediate-term signs shall be at least 7 feet, but not more than 9 feet, above the paved surface, except as shown for supplemental plaques mounted below other signs.
2. The bottom of Short-term/Short Duration signs shall be a minimum of 1 foot above the pavement surface but no more than 2 feet above the ground.
3. Long-term/Intermediate-term Signs may be used in lieu of Short-term/Short Duration signing.
4. Short-term/Short Duration signs shall be used only during daylight and shall be removed at the end of the workday or raised to appropriate Long-term/Intermediate sign height.
5. Regulatory signs shall be mounted at least 7 feet, but not more than 9 feet, above the paved surface regardless of work duration.

SIZE OF SIGNS

1. The Contractor shall furnish the sign sizes shown on BC (2) unless otherwise shown in the plans or as directed by the Engineer.

SIGN SUBSTRATES

1. The Contractor shall ensure the sign substrate is installed in accordance with the manufacturer's recommendations for the type of sign support that is being used. The CWZTCD lists each substrate that can be used on the different types and models of sign supports.
2. "Mesh" type materials are NOT an approved sign substrate, regardless of the tightness of the weave.
3. All wooden individual sign panels fabricated from 2 or more pieces shall have one or more plywood cleat, 1/2" thick by 6" wide, fastened to the back of the sign and extending fully across the sign. The cleat shall be attached to the back of the sign using wood screws that do not penetrate the face of the sign panel. The screws shall be placed on both sides of the splice and spaced at 6" centers. The Engineer may approve other methods of splicing the sign face.

REFLECTIVE SHEETING

1. All signs shall be retroreflective and constructed of sheeting meeting the color and retro-reflectivity requirements of DMS-8300 for rigid signs or DMS-8310 for roll-up signs. The web address for DMS specifications is shown on BC(1).
2. White sheeting, meeting the requirements of DMS-8300 Type A, shall be used for signs with a white background.
3. Orange sheeting, meeting the requirements of DMS-8300 Type B or Type B_L, shall be used for rigid signs with orange backgrounds.

SIGN LETTERS

1. All sign letters and numbers shall be clear, and open rounded type uppercase alphabet letters as approved by the Federal Highway Administration (FHWA) and as published in the "Standard Highway Sign Design for Texas" manual. Signs, letters and numbers shall be of first class workmanship in accordance with Department Standards and Specifications.

REMOVING OR COVERING

1. When sign messages may be confusing or do not apply, the signs shall be removed or completely covered.
2. Long-term stationary or intermediate stationary signs installed on square metal tubing may be turned away from traffic 90 degrees when the sign message is not applicable. This technique may not be used for signs installed in the median of divided highways or near any intersections where the sign may be seen from approaching traffic.
3. Signs installed on wooden skids shall not be turned at 90 degree angles to the roadway. These signs should be removed or completely covered when not required.
4. When signs are covered, the material used shall be opaque, such as heavy mil black plastic, or other materials which will cover the entire sign face and maintain their opaque properties under automobile headlights at night, without damaging the sign sheeting.
5. Burlap shall NOT be used to cover signs.
6. Duct tape or other adhesive material shall NOT be affixed to a sign face.
7. Signs and anchor stubs shall be removed and holes backfilled upon completion of work.

SIGN SUPPORT WEIGHTS

1. Where sign supports require the use of weights to keep from turning over, the use of sandbags with dry, cohesionless sand should be used.
2. The sandbags will be tied shut to keep the sand from spilling and to maintain a constant weight.
3. Rock, concrete, iron, steel or other solid objects shall not be permitted for use as sign support weights.
4. Sandbags should weigh a minimum of 35 lbs and a maximum of 50 lbs.
5. Sandbags shall be made of a durable material that tears upon vehicular impact. Rubber (such as tire inner tubes) shall NOT be used.
6. Rubber ballasts designed for channelizing devices shall not be used for ballast on portable sign supports. Sign supports designed and manufactured with rubber bases may be used when shown on the CWZTCD list.
7. Sandbags shall only be placed along or laid over the base supports of the traffic control device and shall not be suspended above ground level or hung with rope, wire, chains or other fasteners. Sandbags shall be placed along the length of the skids to weigh down the sign support.
8. Sandbags shall NOT be placed under the skid and shall not be used to level sign supports placed on slopes.

FLAGS ON SIGNS

1. Flags may be used to draw attention to warning signs. When used, the flag shall be 16 inches square or larger and shall be orange or fluorescent red-orange in color. Flags shall not be allowed to cover any portion of the sign face.

SHEET 2 OF 2



BARRICADE AND CONSTRUCTION TEMPORARY SIGN NOTES

BC(4)-21

FILE: bc-21.dgn	DN: TxDOT	CK: TxDOT	DW: TxDOT	CR: TxDOT
© TxDOT November 2002	CONT	SECT	JOB	HIGHWAY
REVISIONS	6472	63	001	US 287, ETC.
9-07 8-14	DIST	COUNTY	SHEET NO.	
7-13 5-21	CHS	CHILDRESS	10	

DATE: FILE: