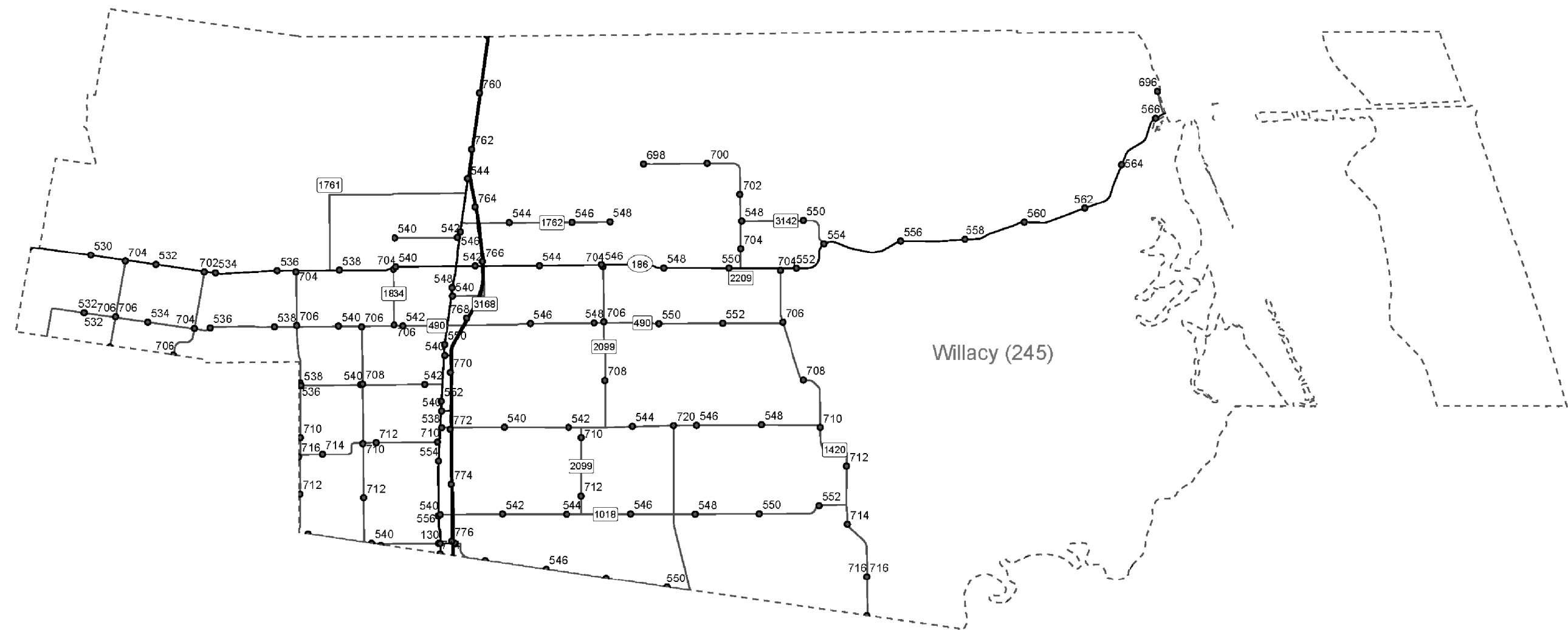



 ©TxDOT 2024			
COUNTY MAPS			
FED. RD. DIV. NO.	MAINTENANCE PROJECT NO.	SHEET NO.	
6	RMC 6465-45-001	2	
STATE	DIST	COUNTY	HIGHWAY
TEXAS	21	CAMERON, ETC	FM 1847, ETC



 Texas Department of Transportation ©TxDOT 2024			
COUNTY MAPS			
FED. RD. DIV. NO.	MAINTENANCE PROJECT NO.	SHEET NO.	
6	RMC 6465-45-001	3	
STATE	DIST	COUNTY	HIGHWAY
TEXAS	21	CAMERON, ETC	FM 1847, ETC

Project Number: 6465-45-001**County:** Cameron, Etc.**Sheet 4****Highway:** FM 1847, Etc.**2014 SPECS GENERAL NOTES:**

General Requirements and Covenants to ITEMS 1 thru 9:

For all pits or quarries, comply with the “Texas Aggregate Quarry and Pit Safety Act.”

Provide on a weekly basis a list of equipment, including idle equipment, utilized on the project that week.

The 1-800 call services for utility locations do not include TxDOT facilities. Contact the Pharr District Signal Section (956-702-6225) for coordination regarding TxDOT underground lines.

ITEM 2: Instructions to Bidders

Contractor questions on this project are to be addressed to the following individual(s):

Eugene Palacios, P.E., District Maintenance;

Eugene.Palacios@txdot.gov

Contractor questions will be accepted through email, phone, and in person by the above individuals. Questions may also be submitted via the Letting Pre-Bid Q&A web page. This webpage can be accessed from the Notice to Contractors dashboard located at the following Address:

<https://tableau.txdot.gov/views/ProjectInformationDashboard/NoticetoContractors>

All contractor questions will be reviewed by the Engineer. All questions and any corresponding responses that are generated will be posted through the same Letting Pre-Bid Q&A web page.

The Letting Pre-Bid Q&A web page for each project can be accessed by using the dashboard to navigate to the project you are interested in by scrolling or filtering the dashboard using the controls on the left. Hover over the blue hyperlink for the project you want to view the Q&A for and click on the link in the window that pops up.

Information found on TxDOT's FTP server will be considered for informational purposes only. [Index of /pub/txdot-info/Pre-Letting Responses/Pharr District/21-Pharr District \(Construction\) \(state.tx.us\)](#)

GENERAL

This contract is based on 18 months with an average of 4 litter and mowing cycles. Cycles may be increased due to need. This will be determined by the department’s representative.

This contract will consist of 549 Calendar days.

Each contract awarded by TxDOT stands on its own and as such, is separate from other contracts. A contractor awarded multiple contracts must be capable and sufficiently staffed to concurrently process any and all contracts at the same time.

The Contractor is to visit the site(s), make his/her own examination of the site(s) where work is to be performed. The Contractor shall carefully examine these specifications and secure from the state additional information that may be essential for a clear and full understanding of work.

The Contractor is responsible for damage to Department equipment, plants, shrubs, delineations, sign fixtures, mailboxes, etc.

The Contractor will furnish all supplies and equipment to successfully perform their duties.

All lost and found items will be turned over to the Department’s Representative.

The Contractor is responsible for reporting daily any needed repairs, wash outs, cave-ins, etc. This information will be reported to the Department’s Representative.

All personal protective equipment (PPE) will be provided by the Contractor and worn at all times by the Contractor personnel on State R.O.W.

All mowed grass and/or debris left on pavement and curb and gutter is to be removed by the Contractor the same day of the respective tract being mowed.

All work will be scheduled and directed by the following Maintenance Supervisor:

San Benito Maintenance

Gilbert De La Fuente

(956) 399-5102

ITEM 3: AWARD AND EXECUTION OF CONTRACT

Contract shall commence upon an initial work order. Multiple work orders will be issued during contract period. Each work order will contain 1) begin start date, 2) specific work to be performed, and 3) allotted working days for completion.

Working days for a mowing cycle are based on an average production rate of **80 acres per day**. Contractor is required to provide adequate equipment and resources to achieve this production rate.

Liquidated damages will be assessed for any working day charged beyond the authorized time.

ITEM 502: BARRICADES, SIGNS AND TRAFFIC HANDLING

Comply with “Roadside Traffic Control Plan” (RS-TCP-05) and Barricade and Construction standards listed on the Title Sheet.

One high-intensity, yellow rotating dome light shall be required on all equipment such as trucks, trailers, autos, etc. (tractor and mower not required). These lights shall be mounted high enough to be visible from all directions and shall be operating when the equipment is used within the work area.

Attach two (2) safety flags to each mower. Placement shall be as directed by Department Representative.

Traffic control will not be paid for directly but shall be considered subsidiary to the various bid items.

SIGNING AND TRAFFIC CONTROL PLAN

The Contractor will comply with the latest Manual on Uniform Traffic Control Devices. Signs, sign stands and safety flags required to protect the traveling public shall be furnished by the Contractor. The Contractor will be responsible for the maintenance, repairs and replacement of all signs, and flags.

LIQUIDATED DAMAGES:

The time established for the completion of the work is an essential element of the Contract. The Contractor will be given written notification (Startup Letter) of when to begin each Mowing and/or Litter Removal cycle. Within the written notification, the Contractor will be given the number of days allowed to complete the work and the date

Project Number: 6465-45-001

County: Cameron, Etc.

Sheet 5

Highway: FM 1847, Etc.

when the time charges for Mowing and/or Litter Removal will begin. The number of days allowed to complete the cycles shall be determined based upon the minimum amount of mowing required per day.

Failure to complete the Mowing and/or Litter Removal cycle within the required number of working days specified in the written notification will result in liquidated damages for each working day charged over the number of working days specified in the Contract. The dollar amount specified in the Contract will be deducted from any money due or to become due the Contractor for each working day in the Contract or incomplete work order. This amount will be assessed not as a penalty, but as liquidated damages.

ITEM 730: ROADSIDE MOWING

The Contractor must have no less than eight (8) mowers in operation at all times. The amount of equipment is for information purposes only and the State will look at production rates to determine if performance is progressing satisfactorily.

All small trees and shrubs up to 1” diameter shall be mowed and all trees greater than 1” diameter shall be removed prior to mowing. Tree mowing and removal will be subsidiary to item 730 “Roadside Mowing”.

Established non-mow areas are clearly marked at designated locations.

Slopes shall be mowed with no marring to surfaces or to established vegetation.

Other construction and/or maintenance contracts may be underway on roadsides to be mowed in this contract. The engineer will determine if these roadsides are to be mowed or not and will inform the contractor through the work order. When necessary, coordinate with other contractors that are working in the area.

Spot mowing is to be determined by the Department Representative and shall be used to address safety concerns near intersections, address sight distances, etc. The frequency is on a call out basis by the Department Representative. Litter is to be picked up prior to mowing and considered subsidiary to Item 730, “Roadside Mowing”. The minimum acres per call out, are 4 acres.

Drain ditches shall be mowed under the respective cycle. The Contractor shall provide mowing equipment to mow slopes without damage to the drain ditch up to the current water’s edge at the time of mowing. In the event that the drain ditch is dry, the Contractor shall mow the bottom width (horizontal flat area) of the drain ditch. The quantity of mowing includes the side slopes, flat bottom width as well as the top bank area up to the right of way line.

ITEM 734: LITTER REMOVAL

Litter shall be paid after the respective area has been mowed. The right of way shall be clean with no or very minor litter. Mowed over debris that creates a large amount of debris shall be picked up by the Contractor within the same day of mowing or no later than the next day. The Contractor shall use their judgment when to perform litter pick-up operations.



CONTROLLING PROJECT ID 6465-45-001

DISTRICT Pharr
HIGHWAY FM1847

COUNTY Cameron

Estimate & Quantity Sheet

CONTROL SECTION JOB				6465-45-001		TOTAL EST.	TOTAL FINAL
PROJECT ID				A00208169			
COUNTY				Cameron			
HIGHWAY				FM1847			
ALT	BID CODE	DESCRIPTION	UNIT	EST.	FINAL		
	500-6001	MOBILIZATION	LS	1.000		1.000	
	730-6002	FULL - WIDTH MOWING	AC	15,384.000		15,384.000	
	730-6003	SPOT MOWING	AC	100.000		100.000	
	734-6001	LITTER REMOVAL	AC	6,395.000		6,395.000	

SUMMARY SHEET


CONTRACT #: 6465-45-001
 CONTRACT MANAGER: San Benito Maintenance

CAMERON COUNTY BROWNSVILLE MAINTENANCE

FULL-WIDTH MOWING

LITTER REMOVAL

HIGHWAY	New Tract No.	LIMITS	FROM R.M.	TO R.M.	LENGTH MILES	FULL-WIDTH MOWING			LITTER REMOVAL		
						OF FULL-WIDTH MOWING	ACRES PER TRACT FULL-WIDTH MOWING	TOTAL ACRES FULL-WIDTH MOWING	OF LITTER REMOVAL	ACRES PER TRACT LITTER REMOVAL	TOTAL ACRES LITTER REMOVAL
SH 4	1	From FM 1419 East to End of Pavement	566	583	16.30	4	98.78	395.12	4	98.78	395.12
FM 1419	2	From SH 4 to 1 mile South of FM 511	565	574	8.30	4	80.48	321.92	4	80.48	321.92
FM 3068	3	From FM 1419 South to FM 511	738	740	1.48	4	6.08	24.32	4	6.08	24.32
FM 511	4	From SH 48 South to FM 1419	566	573	6.62	4	27.27	109.08	0	0.00	0.00
SH 4	5	From FM 511 to FM 1419	564	566	1.60	4	15.51	62.04	4	15.51	62.04
SH 48	6	From FM 802 to SH 100 (Includes Slopes at FM 511 & Center Median Grass Areas)	563	580	17.00	4	65.81	263.24	4	65.81	263.24
SH 100	7	From IH69-E to 1.7 Miles East of FM 510 (except C&G)	554	574	18.50	4	148.00	592.00	4	148.00	592.00
FM 1421	8	From IH69-E to US281	732	739	6.56	4	30.22	120.88	4	30.22	120.88
US 281	9	From FM 732 to FM 3248	825	836	10.96	4	49.72	198.88	0	0.00	0.00
FM 1732	10	From IH69E to US 281 (except C&G)	552	558	4.31	4	26.14	104.56	4	26.14	104.56
FM 511	11	From SH 48 to IH69E (except C&G)	556	566	9.65	4	234.00	936.00	4	234.00	936.00
FM 1847	12	From FM 106 South to .8 miles South of FM 511 (except C&G)	721	737	12.40	4	117.23	468.92	4	117.23	468.92
FM 106	13	From FM 1847 to FM 510	564	575	11.93	4	108.79	435.16	0	0.00	0.00
FM 510	14	From SH 100 to FM 803	558	575	15.60	4	94.54	378.16	4	94.54	378.16
FM 2480	15	From FM 510 South to FM 1847	560	567	6.80	4	40.72	162.88	4	40.72	162.88
FM 3069	16	From FM 510 South to FM 2480	726	729	3.00	4	18.18	72.72	0	0.00	0.00
FM 2893	17	From FM 803 East to FM 1847	556	559	2.95	4	18.27	73.08	4	18.27	73.08
FM 1575	18	From FM 510 South to SH 100	728	732	3.90	4	17.49	69.96	0	0.00	0.00
FM 803	19	From FM 510 South to FM 511	558	566	6.75	4	26.18	104.72	0	0.00	0.00
FM 1577	20	From US 281 to FM 732	730	736	5.30	4	29.55	118.20			
FM 732	21	From US 281 to BUS 77	728	734	6.54	4	36.49	145.96			
TOTAL					176.45		1289.45	5,157.80		975.78	3,903.12



Texas Department of Transportation
© 2024

SUMMARY SHEETS

FED. RD. DIV. NO.	MAINTENANCE PROJECT NO.	SHEET NO.
6	RMC 6465-45-001	7
STATE	DIST	COUNTY
TEXAS	21	CAMERON, ETC
		HIGHWAY
		FM 1847, ETC

SUMMARY SHEET

SAN BENITO MAINTENANCE

HIGHWAY	TRACT NO.	LIMITS	FROM R.M.	TO R.M.	LENGTH MILES	FULL-WIDTH MOWING			LITTER REMOVAL		
						CYCLES OF FULL-WIDTH MOWING	ACRES PER TRACT FULL-WIDTH MOWING	TOTAL ACRES FULL-WIDTH MOWING	CYCLES OF LITTER REMOVAL	ACRES PER TRACT LITTER REMOVAL	TOTAL ACRES LITTER REMOVAL
US 281	22	From Hidalgo/Cameron County Line to FM 732	812	825	12.10	4	121.80	487.20	4	121.80	487.20
SH 345	23	From FM 106 to IH69E	722	728	5.75	4	34.88	139.52	0	0.00	0.00
FM 1847	24	From FM 2925 to FM 106	714	722	7.30	4	44.27	177.08	0	0.00	0.00
FM 510	25	From BUS 77 to FM 803	552	559	6.40	4	36.50	146.00	0	0.00	0.00
FM 803	26	From FM 106 to FM 510	552	559	6.25	4	29.50	118.00	0	0.00	0.00
FM 2925	27	From FM 1847 & FM 106	714	729	11.70	4	127.16	508.64	0	0.00	0.00
FM 1561	28	From SH 345 to FM 803	554	559	4.25	4	25.73	102.92	0	0.00	0.00
FM 1846	29	From FM 106 to BUS 77	722	730	7.41	4	44.92	179.68	0	0.00	0.00
FM 2520	30	From IH69E to US 281 (except curb & gutter- from IH69E to Pennsylvania Ave)	728	735	5.49	4	30.26	121.04	0	0.00	0.00
FM 509	31	From US 281 to FM 508 (except curb & gutter- from IH69E to BUS 77)	720	736	15.30	4	33.19	132.76	0	0.00	0.00
FM 675	32	From FM 1479 to FM 2520	542	546	4.14	4	15.04	60.16	0	0.00	0.00
FM 801	33	From IH69E to FM 800	723	727	3.27	4	19.14	76.56	0	0.00	0.00
FM 800	34	From FM 2520 to SH 107	540	557	16.27	4	85.05	340.20	0	0.00	0.00
FM 3067	35	From FM 506 East to FM 800	538	541	2.34	4	11.63	46.52	0	0.00	0.00
FM 1479	36	From IH69E to US 281	724	734	7.41	4	40.40	161.60	0	0.00	0.00
FM 2994	37	From FM 3195 to FM 800	540	545	1.76	4	7.98	31.92	0	0.00	0.00
FM 508	38	From IH69E to FM 106	544	554	8.98	4	43.54	174.16	0	0.00	0.00
FM 507	39	From Cameron/Willacy County Line to 1.3 miles South of LP 499	714	724	6.79	4	33.30	133.20	0	0.00	0.00
FM 1599	40	From FM 507 to "State Maint. Ends" Sign	548	551	2.22	4	16.16	64.64	0	0.00	0.00
FM 1420	41	From Willacy/Cameron County Line to FM 508	718	723	4.42	4	20.87	83.48	0	0.00	0.00
FM 1595	42	From FM 509 to FM 106	551	554	2.18	4	5.30	21.20	0	0.00	0.00
FM 106	43	From FM 509 to FM 1847	548	565	12.80	4	60.52	242.08	0	0.00	0.00
BUS 83	44	From FM 2556 East to US 83 Expwy	541	545	3.40	4	16.48	65.92	0	0.00	0.00
BUS 77	45	From FM 732 to the Cameron/Willacy County Line	565	579	4.31	4	23.50	94.00	4	23.50	94.00
FM 3462	46	From SH 345 to FM 510	726	728	1.50	4	10.68	42.72	0	0.00	0.00
SH 107	47	From BUS 77 to Cameron/Hidalgo County Line (except urban area in Santa Rosa)	542	551	6.75	4	45.03	180.12	4	19.61	78.44
FM 506	48	From SH 107 to US 281 (except urban area in La Feria)	722	735	5.65	4	28.06	112.24	4	28.06	112.24
FM 2556	49	From FM 506 to US 281	716	734	16.64	4	100.86	403.44	0	0.00	0.00
FM 733	50	From BU 83 North to end of State Maintenance	722	726	2.71	4	9.19	36.76	0	0.00	0.00
TOTAL					195.49		1,120.94	4,483.76		192.97	771.88

SAN BENITO MAINTENANCE DRAIN DITCHES

HIGHWAY	TRACT	AVERAGE WIDTH (FT)	LENGTH (FT)	FULL-WIDTH MOWING			LITTER REMOVAL		
				CYCLES OF FULL-WIDTH MOWING	ACRES PER TRACT FULL-WIDTH MOWING	TOTAL ACRES FULL-WIDTH MOWING	CYCLES OF LITTER REMOVAL	ACRES PER TRACT LITTER REMOVAL	TOTAL ACRES LITTER REMOVAL
FM 506	From Levee to Arroyo Colorado South of Arroyo Rd.	41	1,300	4	2.45	9.79	0	0.00	0.00
SP 54	From US 83 to Osborn Avenue West of Lewis Lane	41	2,630	4	4.95	19.80	0	0.00	0.00
IH 69E	From US 77/83 to Arroyo Colorado West of "M" Street (Victor Park Ditch)	58	6,720	4	17.69	70.74	0	0.00	0.00
US77	From South of FM 732	20	2,146	4	1.97	7.88	0	0.00	0.00
TOTAL					27.06	108.22		0.00	0.00

Contractor shall receive TXDOT approval of drain ditches to be mowed under the respective cycle.

© 2024

SUMMARY SHEETS


FED. RD. DIV. NO.	MAINTENANCE PROJECT NO.	SHEET NO.
6	RMC 6465-45-001	8
STATE	COUNTY	HIGHWAY
TEXAS	CAMERON, ETC	FM 1847, ETC

SUMMARY SHEET

WILLACY COUNTY

RAYMONDVILLE MAINTENANCE

HIGHWAY	TRACT NO.	LIMITS	FROM R.M.	TO R.M.	LENGTH MILES	FULL-WIDTH MOWING			LITTER REMOVAL		
						CYCLES OF FULL-WIDTH MOWING	ACRES PER TRACT FULL-WIDTH MOWING	TOTAL ACRES FULL-WIDTH MOWING	CYCLES OF LITTER REMOVAL	ACRES PER TRACT LITTER REMOVAL	TOTAL ACRES LITTER REMOVAL
SH 186	51	From the Willacy/Hidalgo County Line East to FM 606	528	567	38.40	4	346.00	1,384.00	4	346.00	1,384.00
BU 77W	52	From US 77 (N. of Raymondville) South to Willacy/Cameron County Line	544	558	11.53	4	54.00	216.00	4	54.00	216.00
FM 1015	53	From SH 186 South to Willacy/Hidalgo County Line	702	706	2.60	4	13.00	52.00	4	13.00	52.00
FM 3168	54	From BU77W East to US 77	540	541	1.50	4	12.00	48.00	4	12.00	48.00
SP 56	55	From BU77W East to US 77	540	541	0.25	4	3.00	12.00	0	0.00	0.00
SP 413	56	From BU77W East to US 77	640	641	0.40	4	3.00	12.00	4	3.00	12.00
SP 112	57	From BU77W East to US 77	540	541	0.35	4	2.00	8.00	4	2.00	8.00
FM 498	58	From BU77W East to FM 1420	538	550	11.80	4	46.00	184.00	0	0.00	0.00
FM 491	59	From Hidalgo/Willacy County Line East to BU77W	710	715	4.70	4	23.00	92.00	0	0.00	0.00
FM 506	60	From BU77W West to FM 2629	714	716	1.70	4	8.00	32.00	0	0.00	0.00
FM 1425	61	From SH 186 South to County Line	704	714	9.30	4	105.00	420.00	0	0.00	0.00
FM 88	62	From SH 186 South to Willacy/Hidalgo County Line	704	708	3.00	4	21.80	87.20	0	0.00	0.00
FM 1018	63	From BU77W East to FM 1420	540	553	13.00	4	85.00	340.00	0	0.00	0.00
FM 1921	64	From Hidalgo/Willacy County Line East to BU77W	538	543	4.40	4	33.00	132.00	0	0.00	0.00
FM 1834	65	From SH 186 South to FM 490	704	706	2.00	4	14.50	58.00	0	0.00	0.00
FM 2845	66	From FM 490 South to FM 2629	706	714	7.50	4	59.30	237.20	0	0.00	0.00
FM 1761	67	From BU77W West and South to SH 186	736	743	7.00	4	35.60	142.40	0	0.00	0.00
FM 2209	68	From SH 186 North and West to End of State Maintenance	698	705	6.60	4	44.80	179.20	0	0.00	0.00
FM 3142	69	From FM 2209 East and South to SH 186	548	552	3.20	4	23.20	92.80	0	0.00	0.00
FM 490	70	From Willacy/Hidalgo County Line East to FM 1420	530	554	24.00	4	160.60	642.40	0	0.00	0.00
FM 2629	71	From US 77 East to FM 507	542	551	10.70	4	77.80	311.20	0	0.00	0.00
FM 1420	72	From SH 186 South to Willacy/Cameron County Line	704	718	13.60	4	85.70	342.80	0	0.00	0.00
FM 1762	73	From End of State Maintenance West of BU 77W East to End of State Maintenance	540	548	6.60	4	43.20	172.80	0	0.00	0.00
FM 507	74	From FM 498 South to Willacy/Cameron County Line	708	714	5.80	4	39.00	156.00	0	0.00	0.00
FM 2099	75	From SH 186 South to FM 1018	704	714	8.70	4	56.90	227.60	0	0.00	0.00
FM 2629	76	From FM 506 and Willacy/Hidalgo County Line	538	541	2.70	4	13.09	52.36	0	0.00	0.00
TOTAL					201.33		1408.49	5,633.96		430.00	1,720.00

 Texas Department of Transportation
© 2024

SUMMARY SHEETS

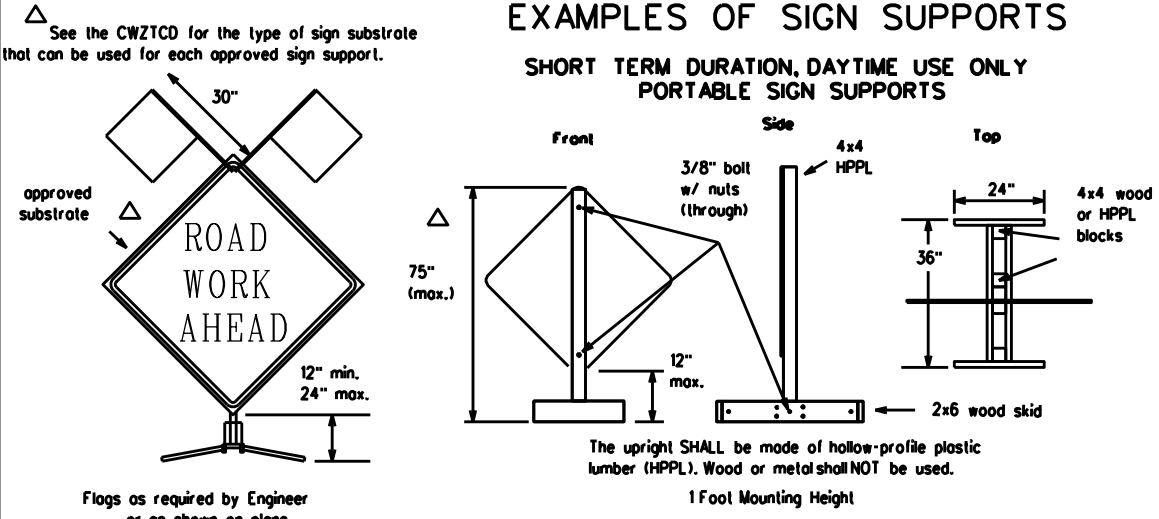
FED. RD. DIV. NO.	MAINTENANCE PROJECT NO.	SHEET NO.
6	RMC 6465-45-001	9
STATE	DIST	COUNTY
TEXAS	21	CAMERON, ETC
		HIGHWAY
		FM 1847, ETC

DISCLAIMER
 The use of this standard is governed by the "Texas Engineering Practice Act". No warranty of any kind is made by TxDOT for any purpose whatsoever. TxDOT assumes no responsibility for the conversion of this standard to other formats or for incorrect results or damages resulting from its use.

LEVELS DISPLAYED	1	2	3	4	5	6	7	8	9	10	11	12	13	14	15	16
	17	18	19	20	21	22	23	24	25	26	27	28	29	30	31	32
	33	34	35	36	37	38	39	40	41	42	43	44	45	46	47	48
	49	50	51	52	53	54	55	56	57	58	59	60	61	62	63	

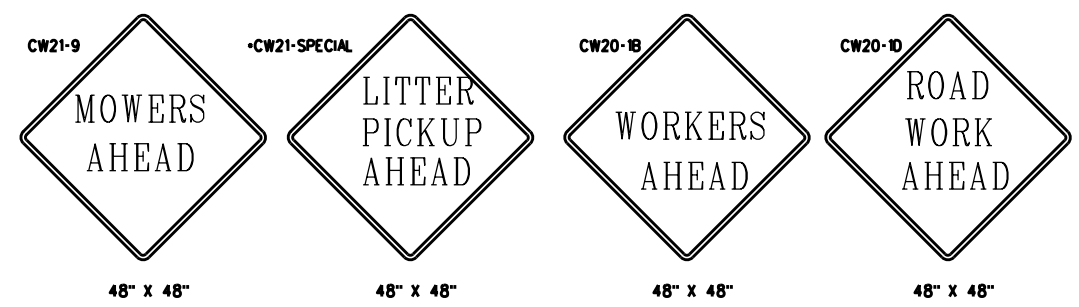
EXAMPLES OF SIGN SUPPORTS

SHORT TERM DURATION, DAYTIME USE ONLY PORTABLE SIGN SUPPORTS



Attachment to wooden supports will be by bolts and nuts or screws. Use TxDOT's or manufacturer's recommended procedures for attaching sign substrates to other types of sign supports.

Nails will NOT be allowed.



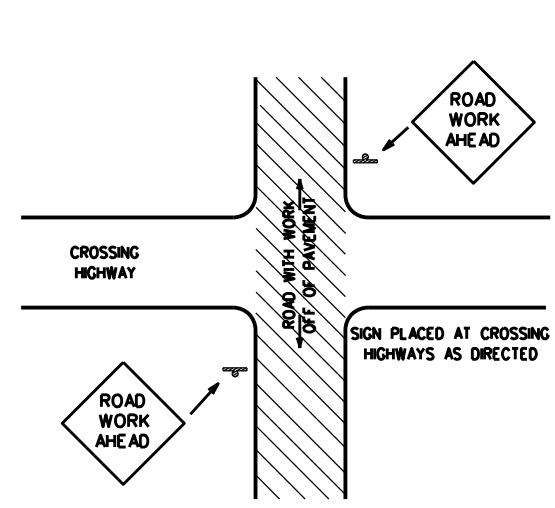
SIGN IN ACCORDANCE WITH THE TEXAS MANUAL ON UNIFORM TRAFFIC CONTROL DEVICES FOR STREETS AND HIGHWAYS

MOWERS AHEAD SIGNS ARE USED FOR MOWING OPERATIONS.

LITTER PICKUP AHEAD, ROAD WORK AHEAD AND WORKER AHEAD SIGNS ARE USED AS DIRECTED FOR OTHER MAINTENANCE OPERATIONS WHEN ALL WORK OCCURS OFF OF THE PAVED HIGHWAY SURFACE.

ROLL-UP SIGNS CONFORMING TO DMS-8310 AND THE CWZTCD ALLOWED

*Letter dimensions and spacing for "CW21-SPECIAL" is the same as C20-1D

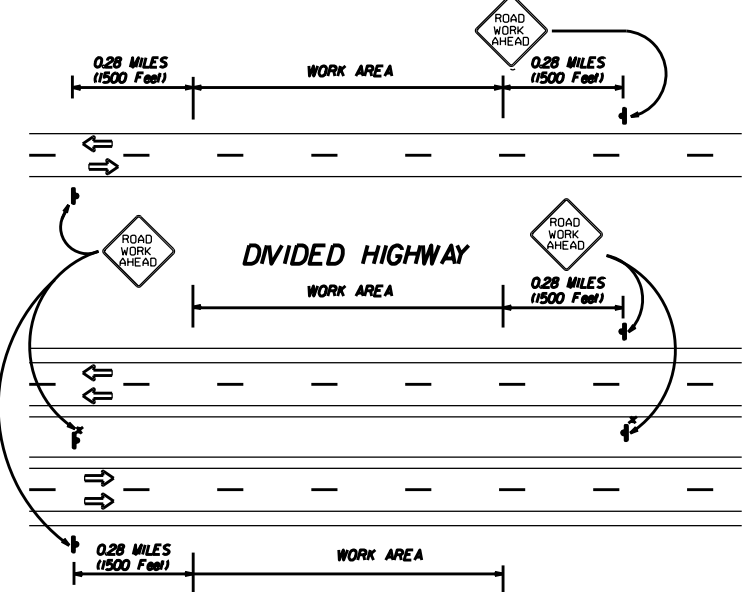


TYPICAL LOCATION OF SIGNS AT HIGHWAY CROSSING

WORK AREA IS A MAXIMUM OF 2.0 MILES UNLESS OTHERWISE DIRECTED. SIGNS MAY REMAIN IN PLACE ONLY DURING DAYLIGHT HOURS. SIGNS ARE TO BE PLACED 6' TO 12' OFF OF THE PAVED SURFACE UNLESS OTHERWISE DIRECTED. ROAD WORK AHEAD SIGNS SHOWN AS EXAMPLES, ONE OF THE FOUR TYPE SIGNS WILL BE USED AS DIRECTED.

* SIGNS IN THE MEDIAN ARE REQUIRED WHEN WORK OCCURS IN MEDIAN

UNDIVIDED HIGHWAY OR FRONTAGE ROAD



TRAFFIC CONTROL PLAN FOR WORK OFF OF THE PAVED SURFACE.

GENERAL NOTES FOR WORK ZONE SIGNS

- Contractor shall install and maintain signs in a straight and plumb condition and/or as directed by the Engineer.
- Wooden sign posts shall be painted white.
- Barricades shall NOT be used as sign supports.
- Nails shall NOT be used to attach signs to any support.
- All signs shall be installed in accordance with the plans or as directed by the Engineer. Signs shall be used to regulate, warn, and guide the traveling public safely through the work zone.
- The Contractor may furnish either the sign design shown in the plans or in the "Standard Highway Sign Designs for Texas" (SHSD). The Engineer/Inspector may require the Contractor to furnish other work zone signs that are shown in the TMUTCD but may have been omitted from the plans. Any variation in the plans shall be documented by written agreement between the Engineer and the Contractor's Responsible Person. All changes must be documented in writing before being implemented. This can include documenting the changes in the Inspector's TxDOT diary and having both the Inspector and Contractor initial and date the agreed upon changes. The additional signs requested by the Engineer/Inspector shall not be subsidiary.
- The Contractor shall furnish sign supports listed in the "Compliant Work Zone Traffic Control Device List" (CWZTCD). The Contractor shall install the sign support in accordance with the manufacturer's recommendations. If there is a question regarding installation procedures, the Contractor shall furnish the Engineer a copy of the manufacturer's installation recommendations so that the Engineer can verify the correct procedures are being followed.
- The Contractor is responsible for sign installations and replacing signs with damaged or cracked substrates and/or damaged or marred reflective sheeting as directed by the Engineer/Inspector.
- Identification markings may be shown only on the back of the sign substrate. The maximum height of letters and/or company logos used for identification shall be 1".
- The Contractor shall replace damaged wood posts. New or damaged wood sign posts shall not be spliced.

Duration of Work (as defined by the "Texas Manual Uniform Traffic Control Devices" Part VII)

- The Contractor is responsible for ensuring the sign support and substrate meets crashworthiness. For mowing operation all signs and supports are Short-term Duration for daytime work.
- The Contractor shall furnish the sign sizes shown on this sheet or as directed by the Engineer.

SIGN SUBSTRATES

- The Contractor shall ensure that the sign substrate is allowed for the type of sign support that is being used. The CWZTCD lists each substrate that can be used on the different types and models of sign supports.
- "Mesh" type materials are NOT an approved sign substrate.
- All wooden individual sign panels fabricated from 2 or more pieces shall have one or more plywood cleat, 1/2" thick by 6" wide, fastened to the back of the sign and extending fully across the sign. The cleat shall be attached to the back of the sign using wood screws that do not penetrate the face of the sign panel. The screws shall be placed on both sides of the splice and spaced at 6" centers. The Engineer may approve other methods of splicing the sign faces.

REFLECTIVE SHEETING

- ReflectORIZED signs shall be constructed of sheeting meeting the color and retro-reflectivity requirements of DMS-8300 or DMS-8310. The DMS specifications can be accessed from the following web address: http://manuals.dot.state.tx.us/80/dynaweb/colmatex/Generic_CollectionView.aspx?default:ts-default
- White sheeting, meeting the requirements of DMS-8300 Type C (High Specific Intensity), shall be used for signs with white background and channelizing devices.
- Orange sheeting, meeting the requirements of DMS-8300 Type E (Fluorescent Prismatic), shall be used for signs with orange backgrounds.

SIGN LETTERS

- All sign letters and numbers shall be clear, and open rounded type uppercase alphabet letters as approved by the Federal Highway Administration (FHWA) and as published in the "Standard Highway Sign Design for Texas" manual. Signs, letters and numbers shall be of first class workmanship in accordance with Department Standards and Specifications.

REMOVING OR COVERING

- Signs should be removed or completely covered when not mowing.
- Duct tape or other adhesive material shall NOT be affixed to a sign face.
- Signs and supports shall be removed by the end of the day.

SIGN SUPPORT WEIGHTS

- Where sign supports require the use of weights to keep from turning over, the use of sandbags with dry cohesionless sand is recommended.
- The sandbags will be tied shut to keep the sand from spilling and to maintain a constant weight.
- Rock, concrete, iron, steel or other solid objects will not be permitted for use as sign support weights.
- Sandbags should weigh a minimum of 35 lbs and a maximum of 50 lbs.
- Sandbags shall be made of a durable material that tears upon vehicular impact.
- Rubber (such as tire inner tubes) shall NOT be used for sandbags.
- Rubber ballasts (such as those used with cones or edgeline channelizers) shall NOT be used as sign support weights.
- Sandbags shall only be placed along or laid over the base supports of the traffic control device and shall not be suspended above ground level or hung with rope, wire, chains or other fasteners. Sandbags shall be placed along the length of the skids to weigh down the sign supports.
- Sandbags shall NOT be placed under the skid and shall not be used to level sign supports placed on slopes.

CONTRACTOR REQUIREMENTS FOR MAINTAINING PERMANENT SIGNS WITHIN THE PROJECT LIMITS

Any sign, sign support or traffic control device that is struck or damaged by the Contractor or his/her construction equipment shall be replaced or repaired as soon as possible by the Contractor at the Contractor's expense.

Only pre-qualified products shall be used. A copy of the "Compliant Work Zone Traffic Control Devices List" (CWZTCD) describes pre-qualified products and their sources and may be obtained by contacting:

Standards Engineer
 Traffic Operations Division - TE
 Texas Department of Transportation
 125 East 11th Street
 Austin, Texas 78701-2483
 Phone (512) 416-3120
 Fax (512) 416-3299

Instructions to locate the "CWZTCD" on TxDOT website are:

Start of website - www.dot.state.tx.us
 Click on "About TxDOT",
 Click on "Organizational Chart",
 Click on Traffic Operations Box,
 Click on "Compliant Work Zone Traffic Control Devices",
 Click on "View PDF".
 This site is printable.

Texas Department of Transportation
 Maintenance Division
 Standard Plans

ROADSIDE TRAFFIC CONTROL PLAN

SHEET 1 OF 1 RS-TCP-05 NOT TO SCALE

FILE: RSTCP05.DGN	DN: LJB	CK: JG	DW:	CK:	NEG NO:
© TxDOT FEBRUARY 2005		STATE DISTRICT: 21	FEDERAL REGION:	FEDERAL AID PROJECT:	SHEET: 10
REVISED: September 17, 2004					
REVISED: FEBRUARY 2, 2005 Sign placement in TCP		COUNTY: CAMERON, ETC	CONTROL SECTION: 6465	JOB: 45	HIGHWAY: 001 FM 1847