

FED. RD. DIV. NO.	PROJECT NO.	SHEET NO.
	MMC 6461-42-001	1
STATE	STATE DIST.	COUNTY
TEXAS	YKM	VICTORIA, ETC.
COUNT.	SECT.	JOB
		HIGHWAY NO.
		US 59, ETC.

STATE OF TEXAS

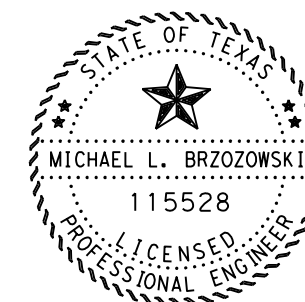
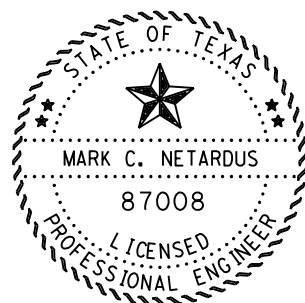
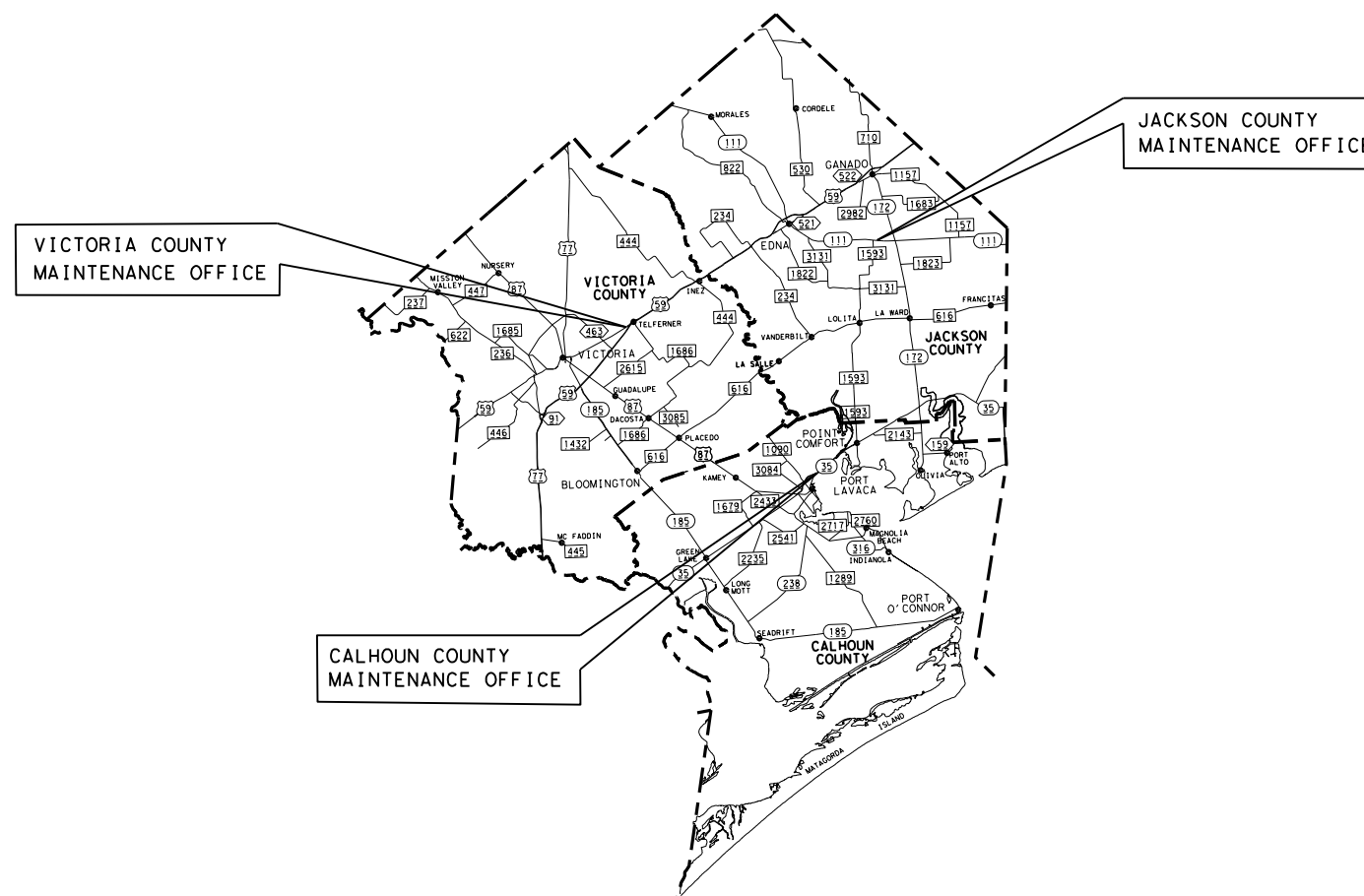
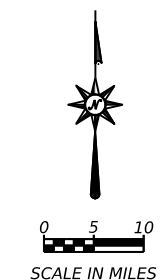
TEXAS DEPARTMENT OF TRANSPORTATION

INDEX OF SHEETS

SHEET NO.	DESCRIPTION
1.	TITLE SHEET
2.	GENERAL NOTES
3.	ESTIMATE AND QUANTITY SHEET

WORK CONSISTING OF DENSE-GRADED HYDRAULIC CEMENT DELIVERY (MATERIAL ONLY)

PROJECT NO: MMC 6461-42-001
COUNTY: VICTORIA, ETC.



THE STANDARD SHEETS SPECIFICALLY IDENTIFIED ABOVE
HAVE BEEN SELECTED BY ME OR UNDER MY RESPONSIBLE
SUPERVISION AS BEING APPLICABLE TO THIS PROJECT.

Mark C. Netardus P.E.
MAINTENANCE ENGINEER

1-31-24
DATE

CALHOUN, JACKSON AND
VICTORIA COUNTY

YOAKUM DISTRICT

EXCEPTIONS: NONE
EQUATIONS: NONE
RAILROAD CROSSING: NONE

APPROVED FOR LETTING: 1-31 24
Michael Brzozowski PE
DIRECTOR OF OPERATIONS

SPECIFICATIONS ADOPTED BY THE TEXAS DEPARTMENT OF TRANSPORTATION,
NOVEMBER 1, 2014 AND SPECIFICATION ITEMS LISTED AND DATED AS FOLLOWS,
SHALL GOVERN ON THIS PROJECT:



© 2024 by Texas Department of Transportation;
all rights reserved.

Project Number: MMC 6461-42-001

County: VICTORIA, ETC.

Highway: US 59, ETC.

GENERAL NOTES:

This is a contract for supplying material on an as needed basis.

Bid price should include furnishing material and delivery to the designated location listed below.

The material will be delivered to the following location when ordered by the bag:

Victoria County Maintenance Yard – ST 1
11401 US 59 N
Victoria, Texas 77905

The material will be delivered to the following location(s) when ordered in bulk:

Victoria County Maintenance Yard – ST 1
11401 US 59 N
Victoria, Texas 77905

Jackson County Maintenance Yard – ST 2
1025 S. Wells
Edna, Texas 77957

Calhoun County Maintenance Yard – ST 3
2275 North SH 35
Port Lavaca, Texas 77979

Contractor questions on this project are to be addressed to the following individual(s):

Mark Netardus Mark.Netardus@txdot.gov
Michael Brzozowski Michael.Brzozowski@txdot.gov

Questions may be submitted via the Letting Pre-Bid Q&A web page. This webpage can be accessed from the Notice to Contractors dashboard located at the following Address:

<https://tableau.txdot.gov/views/ProjectInformationDashboard/NoticetoContractors>

All contractor questions will be reviewed by the Engineer. All questions and any corresponding responses that are generated will be posted through the same Letting Pre-Bid Q&A web page.

The Letting Pre-Bid Q&A web page for each project can be accessed by using the dashboard to navigate to the project you are interested in by scrolling or filtering the dashboard using the controls on the left. Hover over the blue hyperlink for the project you want to view the Q&A for and click on the link in the window that pops up.

Project Number: MMC 6461-42-001

County: VICTORIA, ETC.

Highway: US 59, ETC.

The corresponding Maintenance Supervisor will be the primary point of contact for this contract. The Maintenance Supervisor will work in conjunction with the Contractor to establish an agreement on the specifics of the material delivery.

The contractor is responsible for furnishing and delivering the hydraulic cement to the specified location(s) listed above. The delivery hours will be Monday through Thursday 7:00 AM to 5:00 PM.

The Maintenance Supervisors contact information for the following counties are:

Victoria County -- ST 1 -- Will Sorensen @ 361-407-9024: Will.Sorensen@txdot.gov
Jackson County -- ST 2 -- Jeff Gerdes @ 361-782-5917: Jeffrey.Gerdes@txdot.gov
Calhoun County – ST 3 – Troy Blankenburg @ 361-212-0034: Troy.Zikuhr@txdot.gov

Furnish a certified copy of the legal gross weight of each vehicle hauling materials by weight and certified measurements for all trucks hauling material by volume.

ITEM 8012: HYDRAULIC CEMENT (MATERIAL ONLY)

There will be a minimum order of a truckload when ordering cement by the bag.



Estimate & Quantity Sheet

CONTROLLING PROJECT ID 6461-42-001

DISTRICT Yoakum

COUNTY Victoria

HIGHWAY US0059

CONTROL SECTION JOB				6461-42-001		TOTAL EST.	TOTAL FINAL
PROJECT ID				A00206021			
COUNTY				Victoria			
HIGHWAY				US0059			
ALT	BID CODE	DESCRIPTION	UNIT	EST.	FINAL		
	8012-6024	HYDRAULIC CEMENT(TY I)(DEL)(94LBS)(ST1)	BAG	525.000		525.000	
	8012-6025	HYDRAULIC CEMENT(TY I)(DEL)(94LBS)(ST2)	BAG	525.000		525.000	
	8012-6026	HYDRAULIC CEMENT(TY I)(DEL)(94LBS)(ST3)	BAG	525.000		525.000	