

Project Number: RMC – 646502001**County:** EASTLAND**Control:** 6465-02-001**Highway:** IH0020**GENERAL NOTES:**

- ITEM 730 will be performed on a CALLOUT BASIS at locations identified by each CALLOUT/WORK ORDER.
- This is a CALLOUT CONTRACT. Plan Quantity Measurement does not apply.
- This is a Non-Site-Specific Contract. The LOCATIONS (ROADWAYS) shown on the SUMMARY OF LOCATIONS in the Plans are for Contractor's information only.
- ESTIMATED QUANTITIES shown on the SUMMARY OF LOCATIONS in the Plans are for Contractor's information only.
- QUANTITIES, ROADWAYS and # OF PASSES to be mowed will be identified by each WORK ORDER.
- Full-Width Mowing will be performed only on IH 20 AS NEEDED.
- Fall Mowing/Fall Cleanup – Complete all fall mowing by December 31st.

ITEM 2 INSTRUCTIONS TO BIDDERS

Contractor questions on this project are to be addressed to the following individual(s):

Name	Email Address
Blake G. Stembridge, P.E.	blake.stembridge@txdot.gov

Questions may be submitted via the Letting Pre-Bid Q&A webpage. This webpage can be accessed from the Notice to Contractors dashboard located at the following address:

<https://tableau.txdot.gov/views/ProjectInformationDashboard/NoticetoContractors>

All contractor questions will be reviewed by the Engineer. All questions and any corresponding responses that are generated will be posted through the same Letting Pre-Bid Q&A webpage.

The Letting Pre-Bid Q&A webpage for each project can be accessed by using the dashboard to navigate to the project you are interested in by scrolling or filtering the dashboard using the controls on the left. Hover over the blue hyperlink for the project you want to view the Q&A for and click on the link in the window that pops up.

Project Number: RMC – 646502001**County:** EASTLAND**Control:** 6465-02-001**Highway:** IH0020**ITEM 7 LEGAL RELATIONS AND RESPONSIBILITIES**

No significant traffic generator events identified.

ITEM 502 BARRICADES, SIGNS AND TRAFFIC HANDLING:

Perform all traffic control according to the Texas Manual on Uniform Traffic Control Devices for Streets and Highways and plan sheet RS-TCP-05.

ITEM 730 ROADSIDE MOWING

Report to the Project Inspector prior to beginning work each day.

Keep equipment MORE THAN 30 ft. from the edge of the pavement or travel lane during non-working hours.

Working Days: The Engineer will calculate and specify the number of working days granted for each WORK ORDER using a production rate of 125 acres/working day.

Set mower cutting height at 7 in. Hand trim to a height of approximately 4 in. Hand trim around all dead animals or other large debris that cannot be mowed over or moved in the same manner as any other fixed object. It is also acceptable to move the object to the right of way line prior to mowing.

Strip Mowing:

- Mowing width of 15 ft. - 1 pass with a 15 ft. mower and is actually measured and paid as 14 ft.
- Mowing width of 30 ft. - 2 passes with a 15 ft. mower and is actually measured and paid as 28 ft.
- Mowing width of 45 ft. - 3 passes with a 15 ft. mower and is actually measured and paid as 42 ft.
- Trim around signs and driveways beyond the 15 ft., 30 ft. or 45 ft. Strip Mow width. Trim around curbs and sidewalks in the city sections.
- All areas not CALLED OUT by WORK ORDER become non-mow areas.
- In reference to plan sheet **STRIP-MOW-ND-04**, note number 2 is not required unless CALLED OUT by WORK ORDER.

Eastland County - SUMMARY OF LOCATIONS

CSJ 6465-02-001

- GENERAL NOTES:**
- ITEM 730 will be performed on a **CALLOUT BASIS** at locations identified by each **CALLOUT/WORK ORDER**.
 - This is a **CALLOUT CONTRACT**. Plan Quantity Measurement does not apply.
 - This is a **Non-Site-Specific Contract**. The **LOCATIONS (ROADWAYS)** shown here are for **INFORMATION ONLY**.
 - **ESTIMATED QUANTITIES** shown here are for **INFORMATION ONLY**.
 - QUANTITIES, ROADWAYS and # OF PASSES will be identified by each **WORK ORDER**.
 - FULL-WIDTH MOWING WILL BE PERFORMED only on IH 20 AS NEEDED.

Highway	Limits		Reference Marker		Length in Miles	FULL WIDTH MOWING*		
	From	To	From	To		#Of MOWINGS	AC 1 MOWING	AC TOTAL
IH 20	FULL WIDTH (County Line to County Line)		324	364	39.89	1	1,392	1,392

*FULL WIDTH MOWING MINUS NON-MOW AREAS

Highway	Limits		Reference Marker		Length in Miles	STRIP MOWING 1 Pass			STRIP MOWING 2 Passes			STRIP MOWING 3 Passes		
	From	To	From	To		#Of Mowings	AC 1 Pass	AC Total	#Of Mowings	AC 2 Pass	AC Total	#Of Mowings	AC 3 Pass	AC Total
IH 20	Main Lanes + Median (County Line to County Line)		324	364	39.89	0	285	0	0	422	0	1	503	503
IH 20	Frontage Roads (County Line to County Line)		"	"	"	0	241	0	0	481	0	1	722	722
IH 20	Cross-overs & Ramps (County Line to County Line)		"	"	"	0	43	0	0	86	0	1	129	129
US 183	STEPHENS CO LN	BROWN CO LINE	318	352	29.39	0	110	0	2	199	398	0	303	0
SH 6	CALLAHAN CO LN	COMANCHE CO LINE	332	378	40.50	0	179	0	2	275	550	0	373	0
SH 206	JCT FM 2945	CALLAHAN CO LINE	294	312	13.90	0	52	0	2	94	188	0	155	0
SH 36	CALLAHAN CO LN	COMANCHE CO LINE	340	354	12.40	0	46	0	2	84	168	0	108	0
SP 490	JCT SH 6	JCT IH 20	296	298	1.30	0	5	0	2	9	18	0	19	0
LP 254	IH 20 WEST OF RANGER	IH 20 EAST OF RANGER	534	539	4.20	0	16	0	2	22	44	0	22	0
LP 389	JCT FM 2526	JCT SH 6	468	470	1.09	0	4	0	2	11	22	0	11	0
SH 112	JCT US 183	JCT SH 6	288	299	8.00	0	30	0	2	45	90	0	45	0
SH 16	PALO PINTO CO LN	COMANCHE CO LINE	310	330	18.10	0	67	0	2	123	246	0	186	0
FM 569	JCT SH 206	JCT SH 36	296	317	21.10	1	79	79	1	137	137	0	137	0
FM 2945	CALLAHAN CO LN	JCT SH 206	452	460	7.40	1	28	28	1	71	71	0	71	0
FM 1864	CALLAHAN CO LN	JCT SH 206	452	459	6.40	1	24	24	1	50	50	0	50	0
FM 3265	CALLAHAN CO LN	JCT FM 569	454	455	1.00	1	4	4	1	9	9	0	9	0
FM 2731	JCT FM 569	JCT US 183	454	462	7.79	1	29	29	1	76	76	0	76	0
FM 583	JCT SH 36	BROWN CO LINE	316	318	1.49	1	6	6	1	9	9	0	9	0
FM 374	CALLAHAN CO LN	JCT FM 569	454	457	2.40	1	9	9	1	15	15	0	15	0
FM 587	JCT SH 36	COMANCHE CO LINE	314	316	1.09	1	4	4	1	7	7	0	7	0
FM 2807	END OF PAVEMENT	JCT SH 6	456	459	3.00	1	11	11	1	29	29	0	29	0
FM 2921	JCT SH 6	COMANCHE CO LINE	478	480	0.43	1	1	1	1	4	4	0	4	0
FM 571	JCT LP 254	JCT FM 8	290	307	18.69	1	70	70	1	116	116	0	116	0
FM 717	STEPHENS CO LN	JCT FM 101	290	294	2.90	1	11	11	1	21	21	0	21	0
FM 1027	JCT LP 389	JCT FM 587	302	316	13.40	1	53	53	1	77	77	0	77	0
FM 1852	STEPHENS CO LN	JCT FM 101	288	292	3.20	1	12	12	1	31	31	0	31	0
FM 101	JCT SH 112	JCT SP 254	470	478	7.20	1	27	27	1	61	61	0	61	0
FM 3101	JCT US 183	JCT SH 6	290	298	7.10	1	26	26	1	72	72	0	72	0
FM 2526	JCT FM 569	JCT FM 2689	456	478	21.20	1	79	79	1	206	206	0	206	0
FM 2461	JCT IH 20	JCT FM 2214	302	311	8.89	1	33	33	1	79	79	0	79	0
FM 2214	JCT FM 570	JCT FM 8	474	490	15.19	1	57	57	1	151	151	0	151	0
FM 2563	JCT SH 6	JCT FM 2214	470	481	10.40	1	38	38	1	101	101	0	101	0
FM 2689	JCT FM 2563	JCT FM 8	302	310	7.60	1	28	28	1	75	75	0	75	0
FM 679	COMANCHE CO LN	JCT FM 8	306	307	0.80	1	3	3	1	6	6	0	6	0
FM 8	JCT SH 6	ERATH CO LINE	476	490	13.70	1	51	51	1	110	110	0	110	0
FM 570	JCT IH 20	JCT FM 571	470	482	11.60	1	43	43	1	81	81	0	81	0
FM 3363	JCT IH 20 WEST OF OLDEN	JCT IH 20 EAST OF OLDEN	474	476	1.59	1	6	6	1	12	12	0	12	0
FM 1853	COMANCHE CO LN	JCT SH 6	286	290	3.49	1	13	13	1	35	35	0	35	0
TOTALS					367.82			745		3,365			1,354	

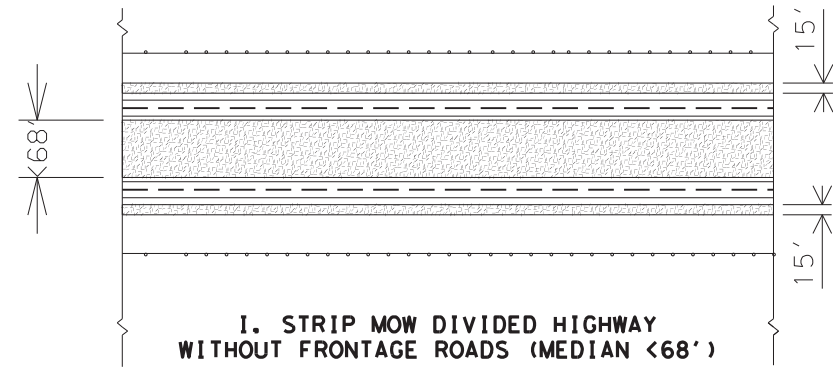
ADDITIONAL STRIP MOWING AT UNDETERMINED LOCATIONS : (ROADWAYS & MOWING WIDTH WILL BE OUTLINED BY WORK ORDER)	750 ACRES
---	--------------

SUMMARY:	AC
Strip Mowing 1 Pass	745
Strip Mowing 2 Passes	3,365
Strip Mowing 3 Passes	1,354
Strip Mowing at UNDETERMINED LOCATIONS	750
APPROX. AC STRIP MOWING	6,214

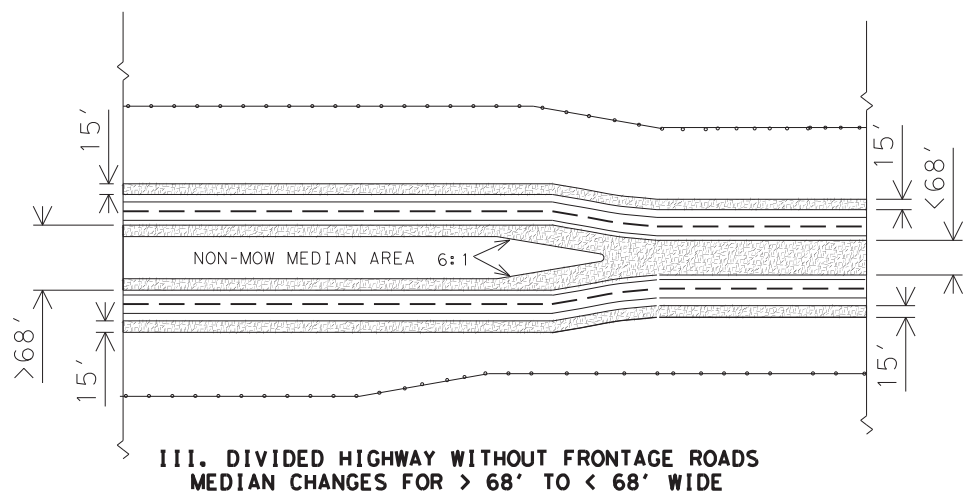
APPROX. AC FULL-WIDTH MOWING	1,392
-------------------------------------	--------------

DISCLAIMER
 The use of this standard is governed by the "Texas Engineering Practice Act". No warranty of any kind is made by TxDOT for any purpose whatsoever. TxDOT assumes no responsibility for the conversion of this standard to other formats or for incorrect results or damages resulting from its use.

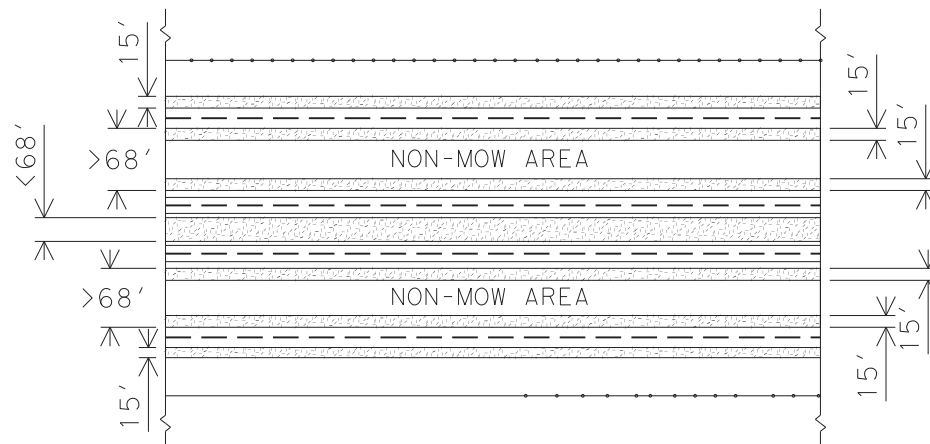
LEVELS DISPLAYED	
1	2
3	4
5	6
7	8
9	10
11	12
13	14
15	16
17	18
19	20
21	22
23	24
25	26
27	28
29	30
31	32
33	34
35	36
37	38
39	40
41	42
43	44
45	46
47	48
49	50
51	52
53	54
55	56
57	58
59	60
61	62
63	64
65	66
67	68
69	70
71	72
73	74
75	76
77	78
79	80
81	82
83	84
85	86
87	88
89	90
91	92
93	94
95	96
97	98
99	100



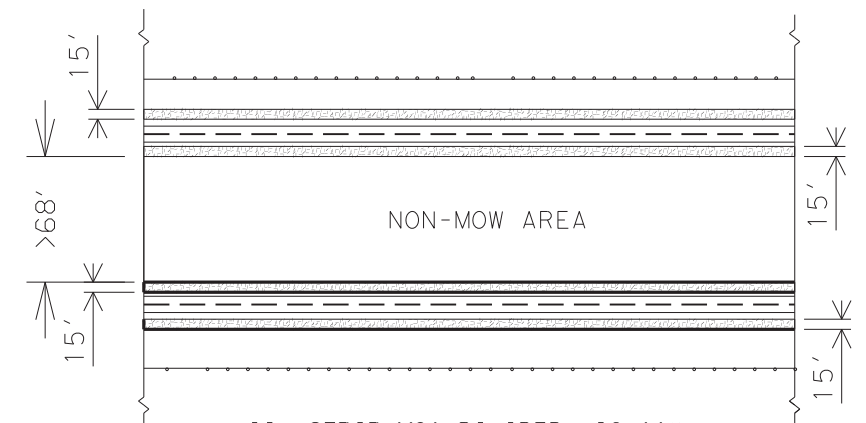
I. STRIP MOW DIVIDED HIGHWAY WITHOUT FRONTAGE ROADS (MEDIAN < 68')



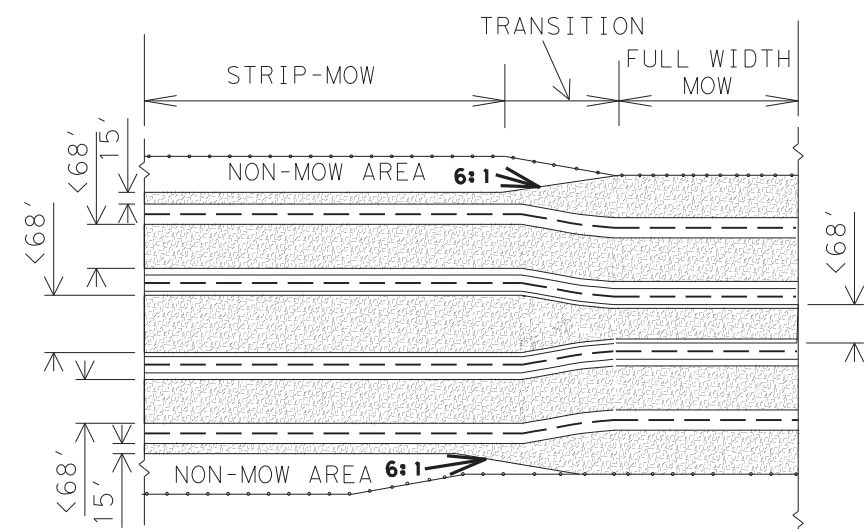
III. DIVIDED HIGHWAY WITHOUT FRONTAGE ROADS MEDIAN CHANGES FOR > 68' TO < 68' WIDE



IV. STRIP MOW WHEN SEPARATION BETWEEN MAIN LANE AND FRONTAGE ROADS IS WIDER THAN 68'



II. STRIP MOW DIVIDED HIGHWAY WITHOUT FRONTAGE ROADS (MEDIAN > 68')



V. TRANSITION FROM FULL WIDTH TO STRIP MOWING DIVIDED HIGHWAY WITH FRONTAGE ROADS (MEDIAN < 68' WIDE)

GENERAL NOTES:

1. MOW THE ENTIRE WIDTH OF MEDIANS AND OUTER SEPARATIONS (AREAS BETWEEN MAIN LANES, RAMPS, AND FRONTAGE ROAD) EXCEPT FOR NON-MOW AREAS.
2. MOW FULL-WIDTH ALL MEDIANS AND OUTER SEPARATIONS 68' OR LESS FROM PAVEMENT EDGE TO PAVEMENT EDGE.
3. FOR MEDIANS AND OUTER SEPARATIONS GREATER THAN 68' MOW A 15' ALONG EACH PAVEMENT EDGE.
4. NON-MOW AREAS IN MEDIANS & OUTER SEPARATIONS WILL BE CONSIDERED THE AREA IN MEDIANS AND OUTER SEPARATIONS GREATER THAN 68' BETWEEN THE 15' STRIP MOW AREAS.
5. OTHER NON-MOW AREA'S WILL BE SHOWN ELSEWHERE ON PLANS OR MARKED ON THE RIGHT OF WAY.

KEY

MOW AREA

PAVED ROADWAY

RIGHT-OF-WAY LINE

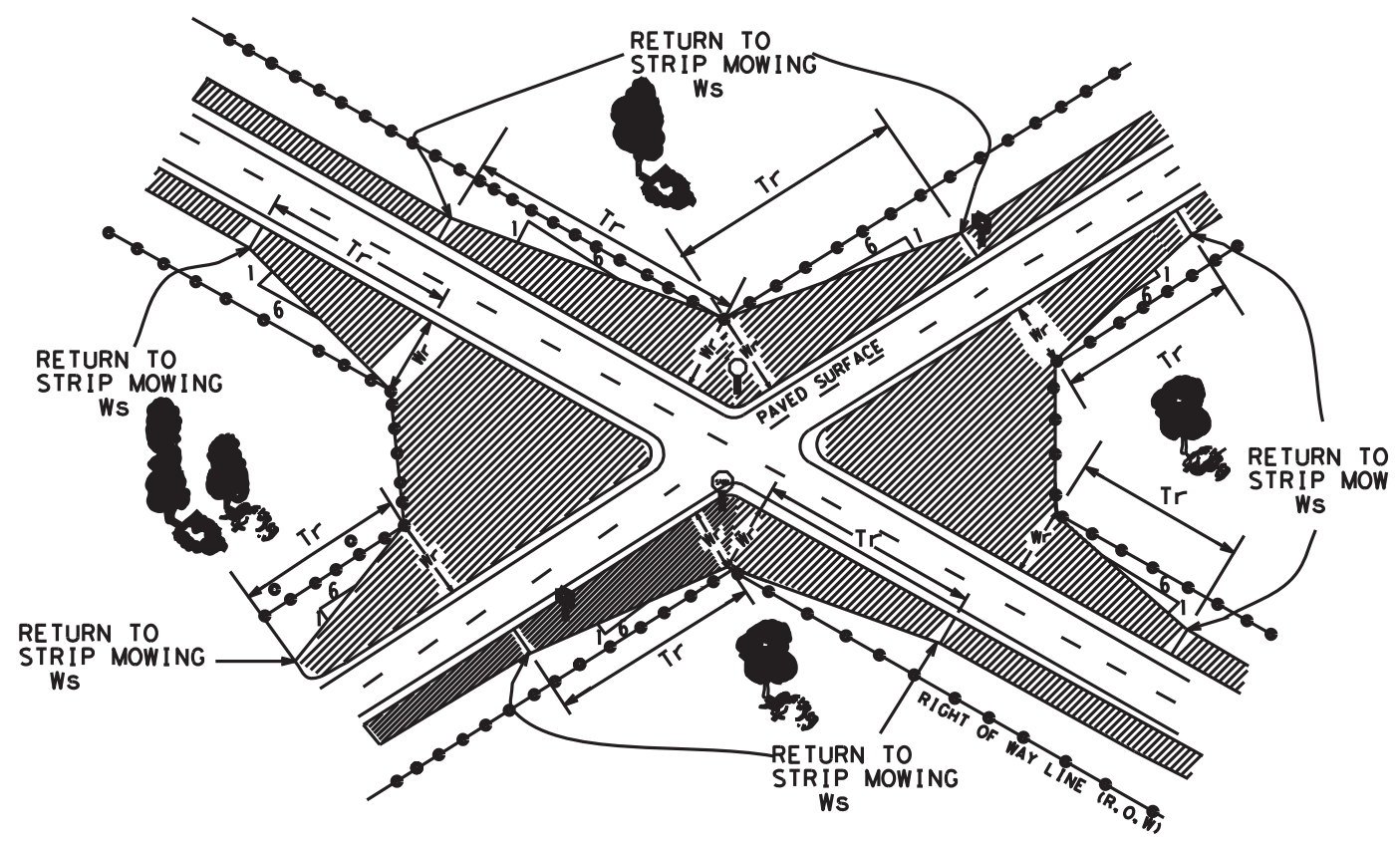
Texas Department of Transportation
 Maintenance Division
 Standard Plans

STRIP MOWING
 (DIVIDED HIGHWAYS)
 STRIP-MOW-D-04

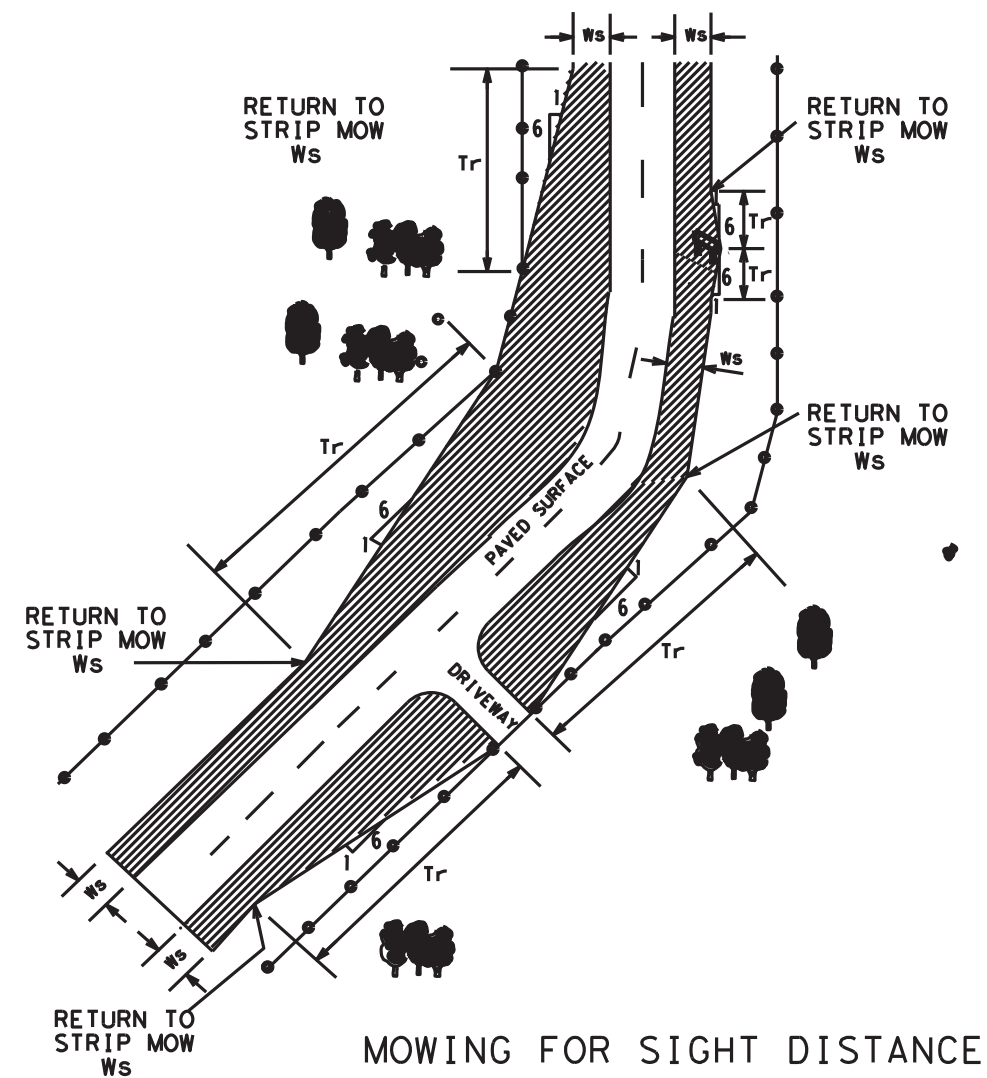
SHEET 1 OF 1

NOT TO SCALE

FILE: SMOWD04.DGN	DN: LJB	CK: JG	DW: -	CK: -	NEG NO.:
© TxDOT JUNE 2004		STATE DISTRICT: BWD	FEDERAL REGION: N/A	FEDERAL AID PROJECT: RMC - 646502001	
REVISED: 6/03/2004			COUNTY: EASTLAND	CONTROL SECTION: 6465 02	JOB: 001
REVISED:					HIGHWAY: IH0020



MOWING FOR SIGHT DISTANCE
WITH TRANSITION FROM INTERSECTION
BACK TO STRIP MOWING



MOWING FOR SIGHT DISTANCE
TRANSITIONS AT DRIVEWAYS,
SIGNS, AND CURVES

DISCLAIMER: The use of this standard is governed by the "Texas Engineering Practice Act". No warranty of any kind is made by TxDOT for any purpose whatsoever. TxDOT assumes no responsibility for the conversion of this standard to other formats or for incorrect results or damages resulting from its use.

GENERAL NOTES:

1. THE NORMAL WIDTH FOR STRIP MOWING IS 15' UNLESS OTHERWISE SHOWN ON THE PLANS.
2. MOW TO THE R.O.W. LINE IN FRONT OF BUSINESSES, RESIDENCES, CHURCHES, OR CULTIVATED FIELDS UNLESS OTHERWISE SHOWN ON THE PLANS.
3. TRANSITION FOR SIGHT DISTANCE TO R.O.W LINE OR AROUND SIGNS AS SHOWN ON THIS SHEET UNLESS OTHERWISE SHOWN ON THE PLANS.

	RIGHT OF WAY LINE
	MOWING LOCATION
W_r	R.O.W. WIDTH (AT START OF TRANSITION)
W_s	STRIP MOWING WIDTH
T_r	TRANSITION

Texas Department of Transportation
Maintenance Division
Standard Plans

STRIP MOWING NON-DIVIDED HIGHWAYS

STRIP-MOW-ND-04

SHEET 1 OF 1 NOT TO SCALE

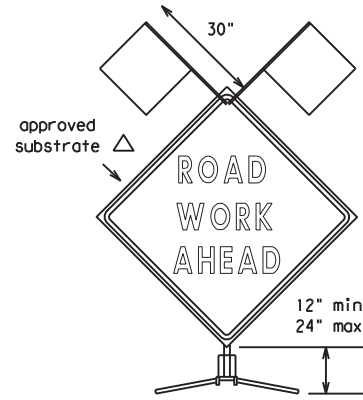
FILE: SMOWND04.DGN	DN: LJB	CK: JG	DW: -	CK: -	NEG NO.:
© TxDOT 2004	STATE DISTRICT	FEDERAL REGION	FEDERAL AID PROJECT		SHEET
REVISED: 5/18/2004	LJB	BWD	N/A	RMC - 646502001	6
REVISED:		COUNTY	CONTROL	SECTION	JOB HIGHWAY
REVISED:		EASTLAND	6465	02	001 IH0020

DISCLAIMER
The use of this standard is governed by the "Texas Engineering Practice Act". No warranty of any kind is made by TxDOT for any purpose whatsoever. TxDOT assumes no responsibility for the conversion of this standard to other formats or for incorrect results or damages resulting from its use.

1	2	3	4	5	6	7	8	9	10	11	12	13	14	15	16
17	18	19	20	21	22	23	24	25	26	27	28	29	30	31	32
33	34	35	36	37	38	39	40	41	42	43	44	45	46	47	48
49	50	51	52	53	54	55	56	57	58	59	60	61	62	63	

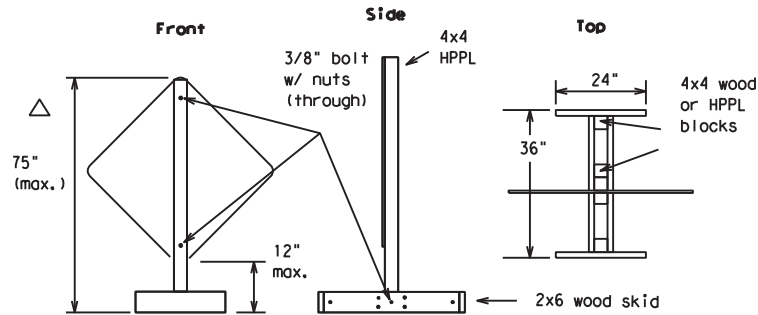
EXAMPLES OF SIGN SUPPORTS

See the CWZTCD for the type of sign substrate that can be used for each approved sign support.



Flags as required by Engineer or as shown on plans

SHORT TERM DURATION, DAYTIME USE ONLY PORTABLE SIGN SUPPORTS

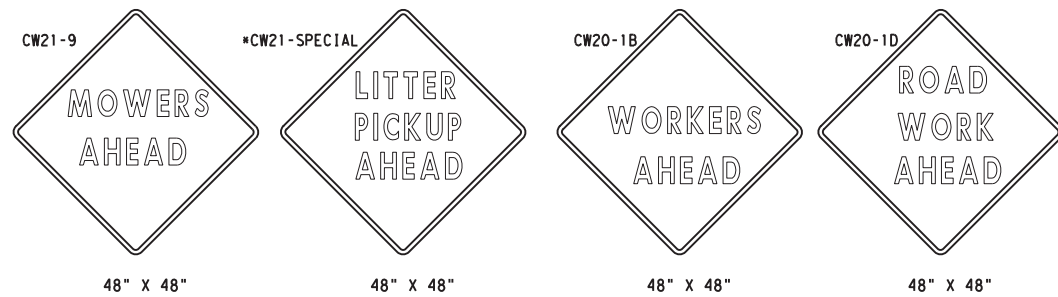


The upright SHALL be made of hollow-profile plastic lumber (HPPL). Wood or metal shall NOT be used.

1 Foot Mounting Height

Attachment to wooden supports will be by bolts and nuts or screws. Use TxDOT's or manufacturer's recommended procedures for attaching sign substrates to other types of sign supports.

Nails will NOT be allowed.



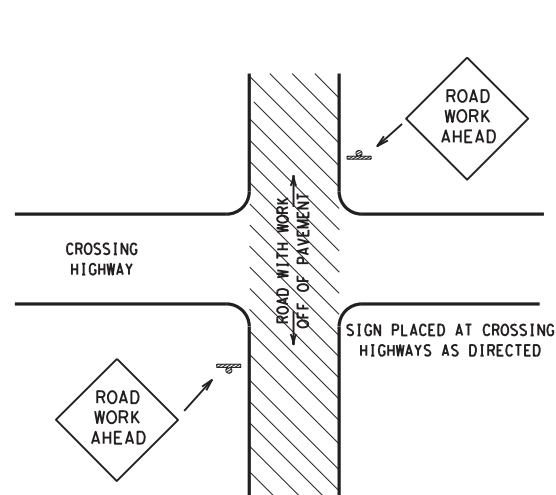
SIGN IN ACCORDANCE WITH THE TEXAS MANUAL ON UNIFORM TRAFFIC CONTROL DEVICES FOR STREETS AND HIGHWAYS

MOWERS AHEAD SIGNS ARE USED FOR MOWING OPERATIONS.

LITTER PICKUP AHEAD, ROAD WORK AHEAD AND WORKER AHEAD SIGNS ARE USED AS DIRECTED FOR OTHER MAINTENANCE OPERATIONS WHEN ALL WORK OCCURS OFF OF THE PAVED HIGHWAY SURFACE.

ROLL-UP SIGNS CONFORMING TO DMS-8310 AND THE CWZTCD ALLOWED

*Letter dimensions and spacing for "CW21-SPECIAL" is the same as C20-1D



TYPICAL LOCATION OF SIGNS AT HIGHWAY CROSSING

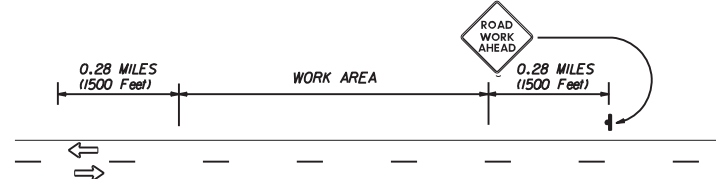
WORK AREA IS A MAXIMUM OF 2.0 MILES UNLESS OTHERWISE DIRECTED. SIGNS MAY REMAIN IN PLACE ONLY DURING DAYLIGHT HOURS.

SIGNS ARE TO BE PLACED 6' TO 12' OFF OF THE PAVED SURFACE UNLESS OTHERWISE DIRECTED.

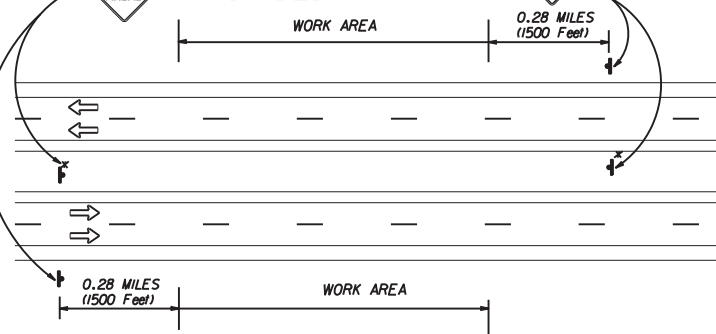
ROAD WORK AHEAD SIGNS SHOWN AS EXAMPLES, ONE OF THE FOUR TYPE SIGNS WILL BE USED AS DIRECTED.

* SIGNS IN THE MEDIAN ARE REQUIRED WHEN WORK OCCURS IN MEDIAN

UNDIVIDED HIGHWAY OR FRONTAGE ROAD



DIVIDED HIGHWAY



TRAFFIC CONTROL PLAN FOR WORK OFF OF THE PAVED SURFACE.

GENERAL NOTES FOR WORK ZONE SIGNS

- Contractor shall install and maintain signs in a straight and plumb condition and/or as directed by the Engineer.
- Wooden sign posts shall be painted white.
- Barricades shall NOT be used as sign supports.
- Nails shall NOT be used to attach signs to any support.
- All signs shall be installed in accordance with the plans or as directed by the Engineer. Signs shall be used to regulate, warn, and guide the traveling public safely through the work zone.
- The Contractor may furnish either the sign design shown in the plans or in the "Standard Highway Sign Designs for Texas" (SHSD). The Engineer/Inspector may require the Contractor to furnish other work zone signs that are shown in the TMUTCD but may have been omitted from the plans. Any variation in the plans shall be documented by written agreement between the Engineer and the Contractor's Responsible Person. All changes must be documented in writing before being implemented. This can include documenting the changes in the Inspector's TxDOT diary and having both the Inspector and Contractor initial and date the agreed upon changes. The additional signs requested by the Engineer/Inspector shall not be subsidiary.
- The Contractor shall furnish sign supports listed in the "Compliant Work Zone Traffic Control Device List" (CWZTCD). The Contractor shall install the sign support in accordance with the manufacturer's recommendations. If there is a question regarding installation procedures, the Contractor shall furnish the Engineer a copy of the manufacturer's installation recommendations so that the Engineer can verify the correct procedures are being followed.
- The Contractor is responsible for sign installations and replacing signs with damaged or cracked substrates and/or damaged or marred reflective sheeting as directed by the Engineer/Inspector.
- Identification markings may be shown only on the back of the sign substrate. The maximum height of letters and/or company logos used for identification shall be 1".
- The Contractor shall replace damaged wood posts. New or damaged wood sign posts shall not be spliced.

Duration of Work (as defined by the "Texas Manual on Uniform Traffic Control Devices" Part VII)

- The Contractor is responsible for ensuring the sign support and substrate meets crashworthiness. For mowing operation all signs and supports are Short-term Duration for daytime work.
- The Contractor shall furnish the sign sizes shown on this sheet or as directed by the Engineer.

SIGN SUBSTRATES

- The Contractor shall ensure that the sign substrate is allowed for the type of sign support that is being used. The CWZTCD lists each substrate that can be used on the different types and models of sign supports.
- "Mesh" type materials are NOT an approved sign substrate.
- All wooden individual sign panels fabricated from 2 or more pieces shall have one or more plywood cleat, 1/2" thick by 6" wide, fastened to the back of the sign and extending fully across the sign. The cleat shall be attached to the back of the sign using wood screws that do not penetrate the face of the sign panel. The screws shall be placed on both sides of the splice and spaced at 6" centers. The Engineer may approve other methods of splicing the sign faces.

REFLECTIVE SHEETING

- Reflectorized signs shall be constructed of sheeting meeting the color and retro-reflectivity requirements of DMS-8300 or DMS-8310. The DMS specifications can be accessed from the following web address:
http://manuals.dot.state.tx.us:80/dynaweb/colmates/@Generic_CollectionView;cs=default;ts=default
- White sheeting, meeting the requirements of DMS-8300 Type C (High Specific Intensity), shall be used for signs with white background and channelizing devices.
- Orange sheeting, meeting the requirements of DMS-8300 Type E (Fluorescent Prismatic), shall be used for signs with orange backgrounds.

SIGN LETTERS

- All sign letters and numbers shall be clear, and open rounded type uppercase alphabet letters as approved by the Federal Highway Administration (FHWA) and as published in the "Standard Highway Sign Design for Texas" manual. Signs, letters and numbers shall be of first class workmanship in accordance with Department Standards and Specifications.

REMOVING OR COVERING

- Signs should be removed or completely covered when not mowing.
- Duct tape or other adhesive material shall NOT be affixed to a sign face.
- Signs and supports shall be removed by the end of the day.

SIGN SUPPORT WEIGHTS

- Where sign supports require the use of weights to keep from turning over, the use of sandbags with dry cohesionless sand is recommended.
- The sandbags will be tied shut to keep the sand from spilling and to maintain a constant weight.
- Rock, concrete, iron, steel or other solid objects will not be permitted for use as sign support weights.
- Sandbags should weigh a minimum of 35 lbs and a maximum of 50 lbs.
- Sandbags shall be made of a durable material that tears upon vehicular impact.
- Rubber (such as tire inner tubes) shall NOT be used for sandbags.
- Rubber ballasts (such as those used with cones or edgeline channelizers) shall NOT be used as sign support weights.
- Sandbags shall only be placed along or laid over the base supports of the traffic control device and shall not be suspended above ground level or hung with rope, wire, chains or other fasteners. Sandbags shall be placed along the length of the skids to weigh down the sign supports.
- Sandbags shall NOT be placed under the skid and shall not be used to level sign supports placed on slopes.

CONTRACTOR REQUIREMENTS FOR MAINTAINING PERMANENT SIGNS WITHIN THE PROJECT LIMITS

Any sign, sign support or traffic control device that is struck or damaged by the Contractor or his/her construction equipment shall be replaced or repaired as soon as possible by the Contractor at the Contractor's expense.

Only pre-qualified products shall be used. A copy of the "Compliant Work Zone Traffic Control Devices List" (CWZTCD) describes pre-qualified products and their sources and may be obtained by contacting:

Standards Engineer
Traffic Operations Division - TE
Texas Department of Transportation
125 East 11th Street
Austin, Texas 78701-2483
Phone (512) 416-3120
Fax (512) 416-3299

Instructions to locate the "CWZTCD" on TxDOT website are:

Start at website - www.dot.state.tx.us
Click on "About TxDOT",
Click on "Organizational Chart",
Click on "Traffic Operations Box",
Click on "Compliant Work Zone Traffic Control Devices",
Click on "View PDF".
This site is printable.

Texas Department of Transportation
Maintenance Division
Standard Plans

ROADSIDE TRAFFIC CONTROL PLAN

SHEET 1 OF 1 RS-TCP-05 NOT TO SCALE

FILE: RSTCPO5.DGN	DN: LJB	CK: JG	DW: -	CR: -	NEG NO.:
© TxDOT FEBRUARY 2005		STATE DISTRICT	FEDERAL REGION	FEDERAL AID PROJECT	SHEET
REVISED: September 17, 2004	BWD	N/A	RMC - 646502001	7	
REVISED: FEBRUARY 2, 2005 Sign placement in TCP		COUNTY	CONTROL SECTION	JOB	HIGHWAY
		EASTLAND	6465 02	001	IHO020