

INDEX OF SHEETS

SHEET NO. DESCRIPTION

GENERAL

- 1 TITLE SHEET
- 2 GENERAL NOTES
- 3 ESTIMATE AND QUANTITY SHEET

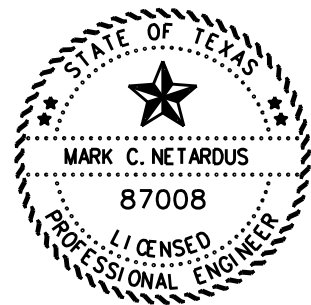
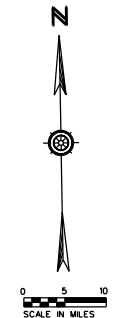
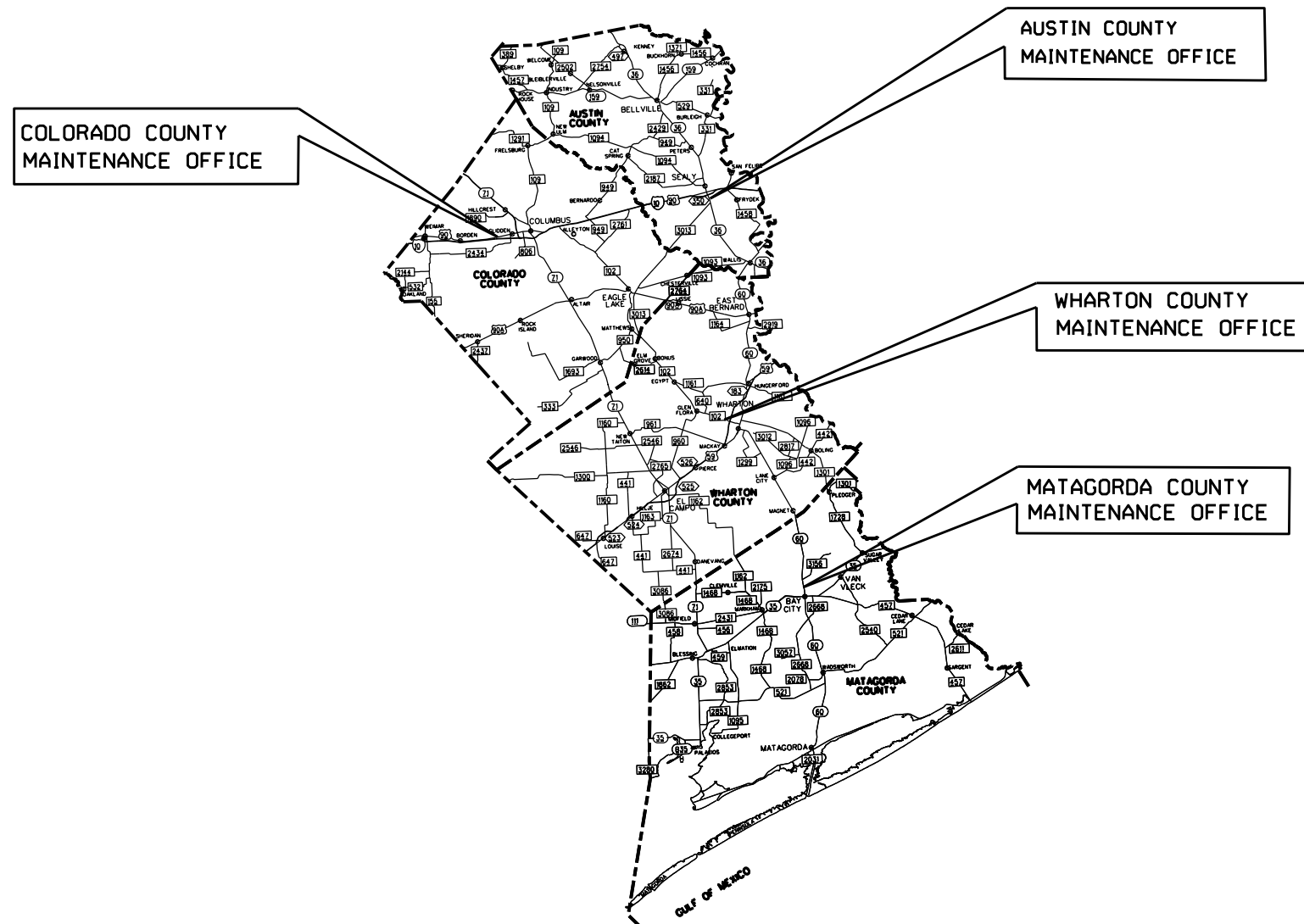
STATE OF TEXAS  
TEXAS DEPARTMENT OF TRANSPORTATION

WORK CONSISTING OF  
ASPHALTIC PATCHING MATERIAL  
(MATERIALS ONLY)

PROJECT NO: MMC 6461-15-001  
COUNTY: WHARTON, ETC.

FED. RD. DIV. NO.	PROJECT NO.	SHEET NO.
	MMC 6461-15-001	1
STATE	STATE	COUNTY
TEXAS	YKM	WHARTON, ETC.
CONT.	SECT.	JOB
		HIGHWAY NO.
		US 59, ETC.

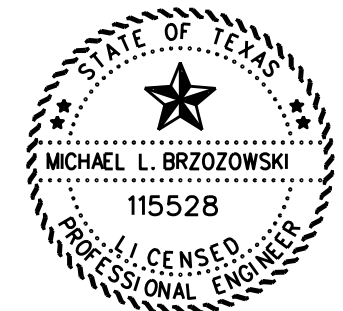
YOAKUM DISTRICT



THE STANDARD SHEETS SPECIFICALLY IDENTIFIED ABOVE HAVE BEEN SELECTED BY ME OR UNDER MY RESPONSIBLE SUPERVISION AS BEING APPLICABLE TO THIS PROJECT.

*Mark C. Netardus P.E.*  
MAINTENANCE ENGINEER

12-14-23  
DATE



APPROVED FOR LETTING: 12-14-23

*Michael Brzozowski PE*  
DIRECTOR OF OPERATIONS

AUSTIN, COLORADO, MATAGORDA  
AND WHARTON COUNTIES

YOAKUM DISTRICT

SPECIFICATIONS ADOPTED BY THE TEXAS DEPARTMENT OF TRANSPORTATION, NOVEMBER 1, 2014 AND SPECIFICATION ITEMS LISTED AND DATED AS FOLLOWS, SHALL GOVERN ON THIS PROJECT:

EXCEPTIONS: NONE  
EQUATIONS: NONE  
RAILROAD CROSSING: NONE



© 2024 by Texas Department of Transportation. All rights reserved.

**Project Number: MMC 6461-15-001**

**County: WHARTON, ETC.**

**Highway: US 59, ETC.**

**GENERAL NOTES:**

This is a contract for supplying material on an as needed basis.

The Maintenance Supervisor will coordinate with the Contractor to have the material delivered or picked up.

If the delivery option is chosen, the material will be delivered to the locations specified below.

The material will be delivered to the following locations:

Wharton County Maintenance Yard – ST 1  
1512 FM 102  
Wharton, Texas 77488

Matagorda County Maintenance Yard – ST 2  
500 Ave F  
Bay City, Texas 77414

Austin County Maintenance Yard – ST 3  
0.60 mile south of IH 10  
Sealy, Texas 77474

Colorado County Maintenance Yard – ST 4  
3816 US 90 W  
Columbus, Texas 78934

Contractor questions on this project are to be addressed to the following individual:

Mark Netardus                      [Mark.Netardus@txdot.gov](mailto:Mark.Netardus@txdot.gov)  
Michael Brzozowski              [Michael.Brzozowski@txdot.gov](mailto:Michael.Brzozowski@txdot.gov)

Contractor questions will be accepted through email, phone, and in person by the above individuals.

Questions may be submitted via the Letting Pre-Bid Q&A web page. This webpage can be accessed from the Notice to Contractors dashboard located at the following Address:  
<https://tableau.txdot.gov/views/ProjectInformationDashboard/NoticetoContractors>

All contractor questions will be reviewed by the Engineer. All questions and any corresponding responses that are generated will be posted through the same Letting Pre-Bid Q&A web page.

**Project Number: MMC 6461-15-001**

**County: WHARTON, ETC.**

**Highway: US 59, ETC.**

The Letting Pre-Bid Q&A web page for each project can be accessed by using the dashboard to navigate to the project you are interested in by scrolling or filtering the dashboard using the controls on the left. Hover over the blue hyperlink for the project you want to view the Q&A for and click on the link in the window that pops up.

The Maintenance Supervisor's contact information for the following counties are:

Wharton County – 979-532-3141  
Matagorda County – Michael Jasek: 979-244-6943 or [Michael.Jasek@txdot.gov](mailto:Michael.Jasek@txdot.gov)  
Austin County – Woody Jasek: 979-865-3101 or [Woodrow.Jasek@txdot.gov](mailto:Woodrow.Jasek@txdot.gov)  
Colorado County- Bradley Polasek: 979-732-7066 or [Bradley.Polasek@txdot.gov](mailto:Bradley.Polasek@txdot.gov)

The contractor is responsible for furnishing and delivering the asphaltic concrete patching materials to the agreed upon location(s). The delivery hours will be Monday through Thursday 7:00 AM to 5:00 PM.

The Maintenance Section will stockpile the material when delivered by the ton.

Furnish a certified copy of the legal gross weight of each vehicle hauling materials by weight and certified measurements for all trucks hauling material by volume.



# Estimate & Quantity Sheet

CONTROLLING PROJECT ID 6461-15-001

DISTRICT Yoakum  
HIGHWAY US0059

COUNTY Wharton

CONTROL SECTION JOB				6461-15-001		TOTAL EST.	TOTAL FINAL
PROJECT ID				A00205988			
COUNTY				Wharton			
HIGHWAY				US0059			
ALT	BID CODE	DESCRIPTION	UNIT	EST.	FINAL		
	8019-6007	ASPHALTIC CONC PATCH MATERIAL (PICKUP)	TON	1,000.000		1,000.000	
	8019-6023	ASPH CONC PAT MAT(ASPPM)(DEL)(SITE 1)	TON	250.000		250.000	
	8019-6024	ASPH CONC PAT MAT(ASPPM)(DEL)(SITE 2)	TON	250.000		250.000	
	8019-6025	ASPH CONC PAT MAT(ASPPM)(DEL)(SITE 3)	TON	250.000		250.000	
	8019-6026	ASPH CONC PAT MAT(ASPPM)(DEL)(SITE 4)	TON	250.000		250.000	