

GRAPHICS FILE		MAINTENANCE PROJECT NO.	SHEET NO.
Title-MNT.dgn		6379 50 001	1
CHECKED	STATE	STATE DIST.	COUNTY
	TEXAS	08	JONES
CHECKED	CONT.	SECT.	JOB
	6379	50	001
			HIGHWAY NO.
			US180, etc.

# INDEX OF SHEETS

SHEET NO. DESCRIPTION

GENERAL	
1	Title Sheet
2-3	General Notes
4	E & Q Sheet -- Jones
5	# RS-TCP-05
#	TxDOT Standards

## STATE OF TEXAS DEPARTMENT OF TRANSPORTATION

### PLANS OF PROPOSED HIGHWAY ROUTINE MAINTENANCE CONTRACT

#### TYPE OF WORK:

MOWING HIGHWAY RIGHT OF WAY

PROJECT NO. : RMC 6379 50 001

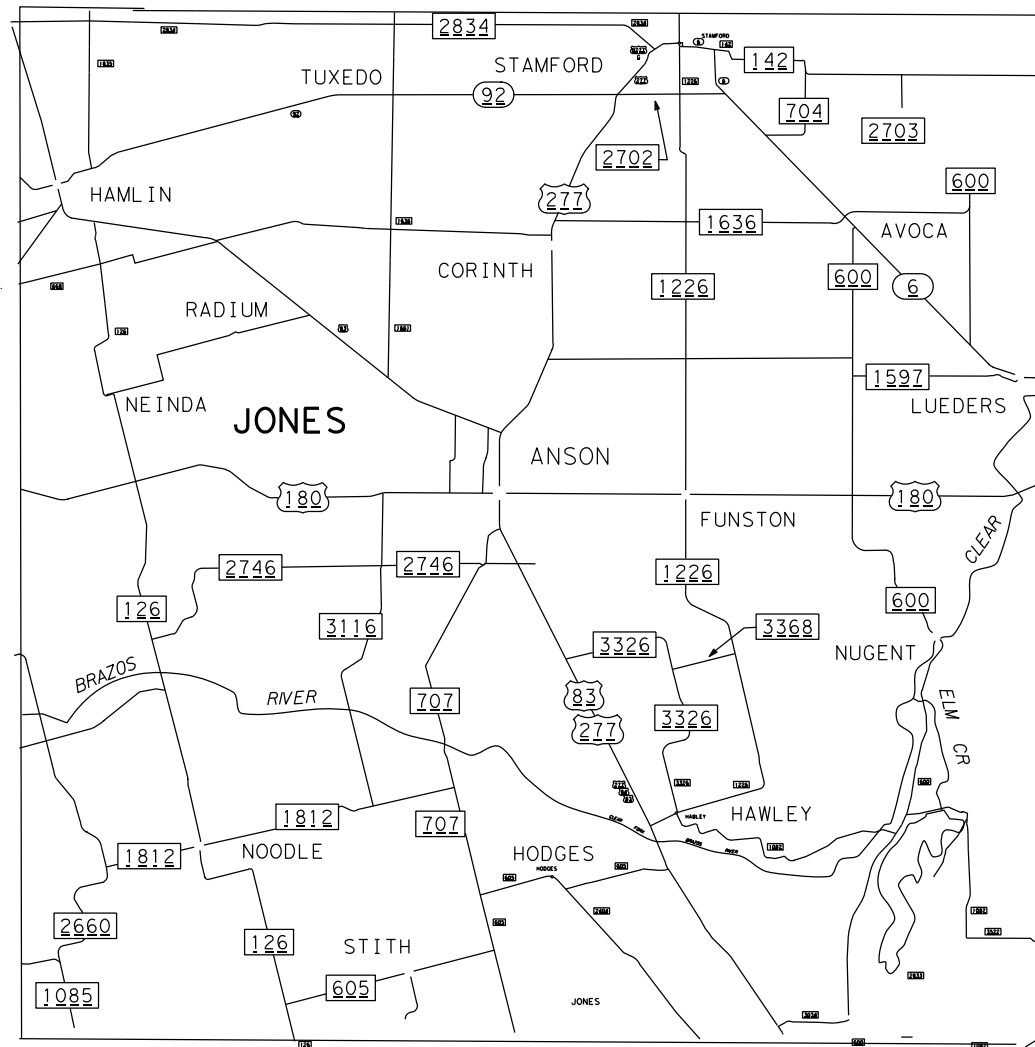
HIGHWAY : US 180, ETC.

LIMITS OF WORK : Various locations in Jones County

FINAL PLANS:  
Date Contractor Began Work:  
Date Work was Completed:  
Date Work Accepted:  
Final Contract Cost: \$

CERTIFICATION FOR FINAL PLANS:  
Project was built according to the plans and specifications.  
These final plans reflect the work done and the quantities shown thereon and on the final estimate are final quantities.

Area Engineer



TEXAS DEPARTMENT OF TRANSPORTATION

SUBMITTED FOR LETTING:

DocuSigned by:

*Daniel P. Richardson, P.E.*

3/12/2021

Daniel P. Richardson, P.E.  
Director of Operations

Date

DocuSigned by:

*Thomas G. Allbritton, P.E.*

3/12/2021

Thomas G. Allbritton, P.E.  
District Engineer

Date

© by Texas Department of Transportation:  
2019 all rights reserved

SPECIFICATIONS ADOPTED BY THE TEXAS DEPARTMENT OF TRANSPORTATION  
NOVEMBER 1, 2014 AND SPECIAL SPECIFICATION ITEMS INCLUDED IN THE  
CONTRACT SHALL GOVERN ON THIS PROJECT.

LEVELS DISPLAYED					
1					
2					
3					
4					

**GENERAL NOTES**

**General**

- This is a CALLOUT CONTRACT. ITEM 730 and ITEM 734 will be performed on a CALLOUT BASIS at locations identified by each CALLOUT/WORK ORDER. Plan Quantity Measurement does not apply.
- This is a Non-Site-Specific Contract. The LOCATIONS (TRACTS) and QUANTITIES shown on the ESTIMATE/QUANTITY SHEET in the Plans are for Contractor's information only.
- TRACTS, QUANTITIES, FULL-WIDTH OR STRIP MOW and LITTER will be identified by each CALLOUT/WORK ORDER.
- Report to the PROJECT MANAGER/INSPECTOR prior to beginning work each day.

**Contract Prosecution**

Each contract awarded by the Department stands on its own and as such, is separate from other contracts. A contractor awarded multiple contracts, must be capable and sufficiently staffed to concurrently process any or all contracts at the same time.

**Item 2 Instructions to Bidders**

Contractor questions on this project are to be addressed to the following individual(s):

Paul Norman, P.E.: [Paul.Norman@txdot.gov](mailto:Paul.Norman@txdot.gov)  
 Chad Carter, P.E.: [Chad.Carter@txdot.gov](mailto:Chad.Carter@txdot.gov)  
 (Abilene Area Office)

Contractor questions will be accepted through email, phone, and in person by the above individuals.

All contractor questions will be reviewed by the Engineer. Once a response is developed, it will be posted to TxDOT's Public FTP at the following Address:

[https://ftp.dot.state.tx.us/pub/txdot-info/Pre-Letting Responses/](https://ftp.dot.state.tx.us/pub/txdot-info/Pre-Letting%20Responses/)

All questions submitted that generate a response will be posted through this site. The site is organized by District, Project Type (Construction or Maintenance), Letting Date, CCSJ/Project Name.

**Item 7 Legal Relations and Responsibilities:**

No significant traffic generator events identified.

**Item 502 Barricades, Signs, and Traffic Handling**

Additional signs, barricades and traffic handling may be necessary to complete the work shown herein and will be provided by the contractor as required and will be considered subsidiary to the bid items.

**GENERAL NOTES**

Traffic control shall be in compliance with the "Texas Manual on Uniform Traffic Control Devices", the TCP standards included in the plans, and the "Compliant Work Zone Traffic Control Device" list.

**Item 730 Roadside Mowing**

Slopes will be mowed with no damage to the established vegetation.

Other construction and/or maintenance contracts may be underway on roadsides to be mowed in this contract. Mowing will not be required in these areas.

Spot Mowing may be designated by the Engineer to address safety concerns. The contractor will have 72 hours to begin mowing any designated area from the time of notification. Any Spot Mowing that is performed will also include Litter Removal. A one-time fee for a Callout Mobilization will be paid for Spot Mowing.

The Engineer will determine the sequence of tracts to be mowed. Refer to the Estimate and Quantity Sheet in the plans for width to be mowed on each tract.

For each cycle required, the Engineer shall send the contractor a work order containing the following information:

- Tract numbers and total number of acres to be mowed
- Working days allowed to complete the cycle
- Date when time charges for the cycle will begin

Working days allowed to complete a cycle of mowing and litter removal will be determined by dividing the total number of acres required for the cycle by the production rate of 115 acres each working day. A fraction of a day shall be rounded up to the nearest whole number. If the total number of working days is not used during the completion of the work required within one cycle, the working days will not be carried forward to any cycle period.

Perform hand trimming on guardrail in non-mow areas, outer separations on controlled access highways, restricted access areas and between main lanes and frontage roads located within 10 yards of the travel way or adjacent to paved shoulders. Hand trim 5 ft. behind guardrail or as directed by the Engineer.

Hand trim around all dead animal or other large debris that cannot be mowed over or moved in the same manner as any other fixed object. It is also acceptable to move the object to the right of way line prior to mowing.

**Definitions:**

Full Width Mow – Mow entire width of right of way.

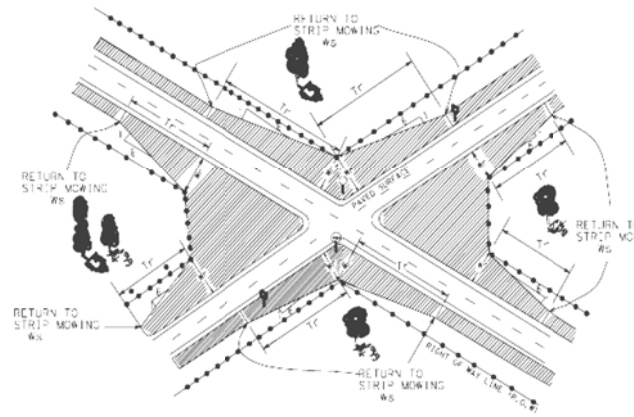
Strip Mow – Mow 15 feet from edge of pavement or unpaved shoulder.

Always mow the entire width of medians and outer separations (areas between main lanes, ramps, and frontage road) except for non-mow areas.

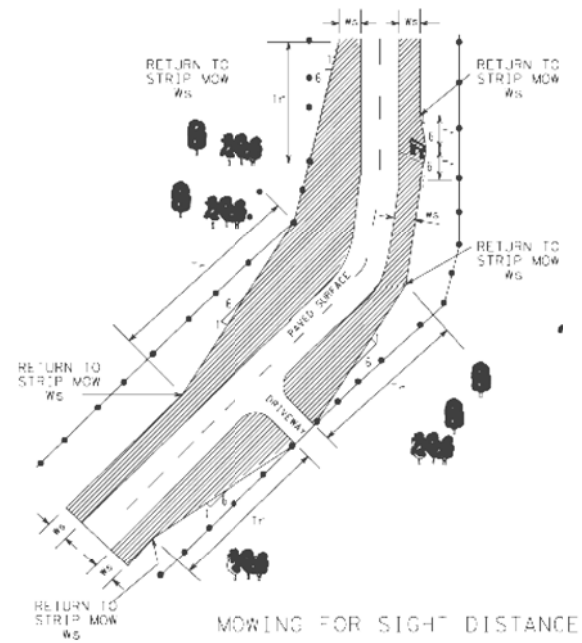
CONT	SECT	JOB	HIGHWAY
6379	50	001	US180, ETC.
DIST	COUNTY		SHEET NO.
ABL	JONES		02

**GENERAL NOTES**

Strip mow as shown below at intersections and curves for sight distance. Transition Length (Tr) will be no less than 200'.



MOWING FOR SIGHT DISTANCE  
 WITH TRANSITION FROM INTERSECTION  
 BACK TO STRIP MOWING



MOWING FOR SIGHT DISTANCE  
 TRANSITIONS AT DRIVEWAYS,  
 SIGNS, AND CURVES

**GENERAL NOTES**

**Item 734 Litter Removal**

Litter removal will be performed no more than 2 working days prior to the mowing cycle.

Pick up any litter remaining after mowing operation.

Only one cycle of litter removal will be paid per mowing cycle.

It is the intent of this item that TxDOT's right-of-way be mowed and litter-free after the contractor's mowing operation.

CONT	SECT	JOB	HIGHWAY
6379	50	001	US180, ETC.
DIST	COUNTY		SHEET NO.
ABL	JONES		03

JONES COUNTY 2021 MOWING LOCATION AND ITEM QUANTITY SUMMARY

TRACT	HWY	LIMITS	ITEM 500-6033 MOBILIZATION (CALL OUT)			ITEM 730-6001 STRIP MOWING			ITEM 730-6002 FULL-WIDTH MOWING			ITEM 730-6003 SPOT MOWING			ITEM 734-6001 LITTER REMOVAL		
			CYCLES	EACH	TOTAL EACH	CYCLES	ACRES	TOTAL ACRES	CYCLES	ACRES	TOTAL ACRES	CYCLES	ACRES	TOTAL ACRES	CYCLES	ACRES	TOTAL ACRES
1	US 83	FROM TAYLOR CO/L TO FM 707			0	1	350	350	2	364	728			0	3	1078	1078
2	US 277	FROM US 83 TO HASKELL CO/L			0	1	213	213	2	255	510			0	3	723	723
3	SH 6	FROM STAMFORD C/L TO FM 1597			0	1	59	59	2	134	268			0	3	327	327
4	SH 92	FROM FM 1835 TO US 277			0	1	68	68	2	161	322			0			0
5	US 83	FROM FISHER CO/L TO HAMLIN N C/L			0	1	5	5	2	21	42			0			0
6	US 83	FROM HAMLIN S C/L TO US 277			0	1	27	27	2	101	202			0			0
7	US 180	FROM FISHER CO/L TO ANSON W C/L			0	1	52	52	2	127	254			0			0
8	US 180	FROM ANSON E C/L TO SHACKELFORD CO/L			0	1	60	60	2	158	316			0			0
9	FM 57	FROM FISHER CO/L TO HAMLIN C/L			0	1	19	19	2	20	40			0			0
10	FM 126	FROM US 83 TO TAYLOR CO/L			0	1	98	98	2	207	414			0			0
11	FM 142	FROM STAMFORD C/L TO SHACKELFORD CO/L			0	1	34	34	2	71	142			0			0
12	FM 540	FROM FISHER CO/L TO US 83			0	1	1	1	2	2	4			0			0
13	FM 600	HASKELL CO/L ABILENE N C/L			0	1	98	98	2	252	504			0			0
14	FM 605	FROM FM 126 TO US 83			0	1	52	52	2	106	212			0			0
15	FM 668	FROM FISHER CO/L TO FM 126			0	1	9	9	2	25	50			0			0
16	FM 704	FROM FM 142 TO SH 6			0	1	12	12	2	27	54			0			0
17	FM 707	FROM US 83 TO TAYLOR CO/L			0	1	53	53	2	106	212			0			0
*18	<sup>1</sup> FM 1082	FROM HAWLEY C/L TO TAYLOR CO/L			0	1	51	51	2	109	218			0			0
19	Access Road	FROM FM 1082 TO PICNIC AREA			0	1	1	1	2	2	4			0			0
20	FM 1085	FROM FISHER CO/L TO TAYLOR CO/L			0	1	12	12	2	32	64			0			0
21	FM 1226	FROM STAMFORD C/L TO HAWLEY C/L			0	1	94	94	2	215	430			0			0
22	FM 1235	FROM FM 605 TO TAYLOR CO/L			0	1	8	8	2	17	34			0			0
23	FM 1597	FROM FM 600 TO SH 6			0	1	19	19	2	49	98			0			0
24	FM 1636	FROM US 83 TO SH 6			0	1	69	69	2	185	370			0			0
25	FM 1661	FROM HASKELL CO/L TO US 83			0	1	40	40	2	86	172			0			0
26	FM 1812	FROM FISHER CO/L TO FM 707			0	1	65	65	2	168	336			0			0
27	FM 1835	FROM STONEWALL CO/L TO HAMLIN C/L			0	1	14	14	2	40	80			0			0
28	FM 2142	FROM FISHER CO/L TO HAMLIN C/L			0	1	2	2	2	6	12			0			0
29	FM 2404	FROM FM 605 TO TAYLOR CO/L			0	1	21	21	2	62	124			0			0
30	FM 2660	FROM FM 1812 TO FM 1085			0	1	17	17	2	42	84			0			0
<b>SUB-TOTALS PAGE 1</b>					<b>0</b>			<b>1623</b>			<b>6300</b>			<b>0</b>			<b>2128</b>

\*Notes:

1. Tract 18...FM 1082 - Non-Mow area from Abilene W C/L to Abilene SE C/L.

FHWA DIVISION	PROJECT NO.		HIGHWAY NO.	
6	SEE TITLE SHEET		US180, ETC.	
STATE	COUNTY			SHEET NO.
TEXAS	JONES			4
DISTRICT	CONTROL	SECTION	JOB	
ABL	6379	50	001	

JONES COUNTY 2021 MOWING LOCATION AND ITEM QUANTITY SUMMARY

TRACT	HWY	LIMITS	ITEM 500-6033 MOBILIZATION (CALL OUT)			ITEM 730-6001 STRIP MOWING			ITEM 730-6002 FULL-WIDTH MOWING			ITEM 730-6003 SPOT MOWING			ITEM 734-6001 LITTER REMOVAL		
			CYCLES	EACH	TOTAL EACH	CYCLES	ACRES	TOTAL ACRES	CYCLES	ACRES	TOTAL ACRES	CYCLES	ACRES	TOTAL ACRES	CYCLES	ACRES	TOTAL ACRES
31	FM 2702	FROM US 277 TO SH 6			0	1	12	12	2	37	74			0			0
32	FM 2703	FROM FM 142 TO 1 MILE SOUTH			0	1	4	4	2	10	20			0			0
33	FM 2746	FROM FM 126 TO US 83			0	1	48	48	2	121	242			0			0
34	FM 2833	FROM FM 1082 TO TAYLOR CO/L			0	1	31	31	2	46	92			0			0
35	FM 2834	FROM FM 1835 TO US 277			0	1	63	63	2	161	322			0			0
36	FM 3034	FROM US 83 TO ABILENE W C/L			0	1	7	7	2	17	34			0			0
37	FM 3116	FROM US 180 TO FM 1812			0	1	36	36	2	94	188			0			0
38	FM 3326	FROM US 83 TO FM 1082			0	1	33	33	2	79	158			0			0
39	FM 3368	FROM FM 3326 TO FM 1226			0	1	8	8	2	20	40			0			0
40	FM 3522	FROM FM 1082 TO 2.4 MILES EAST			0	1	10	10	2	20	40			0			0
41	BU 277-G	FROM US 277 BYPASS IN STAMFORD TO HASKELL CO/L			0			0	3	7	21			0			0
42	US 277	FROM 536 YARDS N TO S BU 277-G IN STAMFORD			0			0	3	42	126			0			0
43	US 83	FROM 1750' N OF FM 1082 TO 1750' S OF FM 1082 IN HAWLEY			0			0	3	8	24			0			0
44	FM 1835	FROM SH 92 TO HAMLIN N C/L			0			0	3	0.01	0.03			0	3	0.01	0.03
45	SH 92 W	FROM US 83 TO HAMLIN W C/L			0			0	3	0.01	0.03			0	3	0.01	0.03
46	US 83 N	FROM SH 92 TO HAMLIN N C/L			0			0	3	9.09	27.27			0	3	9.09	27.27
47	FM 57	FROM US 83 TO HAMLIN S C/L			0			0	3	0.59	1.77			0	3	0.59	1.77
48	FM 2142	FROM FM 57 TO HAMLIN W C/L			0			0	3	3.6	10.8			0	3	3.6	10.8
49	US 83 S	FROM SH 92 TO HAMLIN S C/L			0			0	3	0.18	0.54			0	3	0.18	0.54
50	FM 1082	FROM US 83 TO HAWLEY E C/L			0			0	3	4	12			0	3	4	12
51	SH 6	FROM NEAR OAK ST TO STAMFORD SE C/L			0			0	3	6.67	20.01			0	3	6.67	20.01
TBD	TBD	TBD	1	1	1						0	1	100	100	1	100	100
<b>SUB-TOTALS PAGE 2</b>					<b>1</b>			<b>252</b>			<b>1453.45</b>			<b>100</b>			<b>172.45</b>
<b>SUB-TOTALS PAGE 1</b>					<b>0</b>			<b>1623</b>			<b>6300</b>			<b>0</b>			<b>2128</b>
<b>GRAND TOTALS</b>					<b>1</b>			<b>1875</b>			<b>7753.45</b>			<b>100</b>			<b>2300.45</b>

FHWA DIVISION	PROJECT NO.		HIGHWAY NO.	
6	SEE TITLE SHEET		US180, ETC.	
STATE	COUNTY			SHEET NO.
TEXAS	JONES			5
DISTRICT	CONTROL	SECTION	JOB	
ABL	6379	50	001	

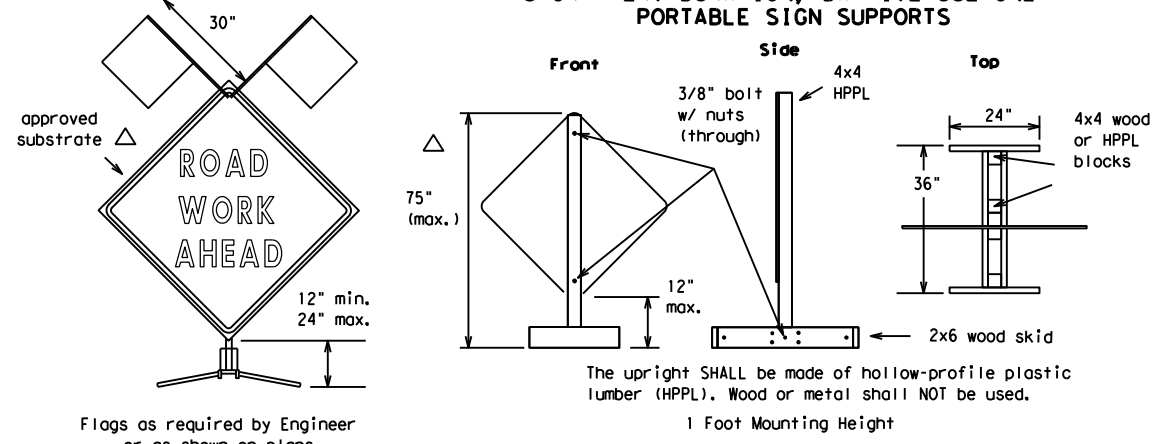
DISCLAIMER  
 The use of this standard is governed by the "Texas Engineering Practice Act". No warranty of any kind is made by TxDOT for any purpose whatsoever. TxDOT assumes no responsibility for the conversion of this standard to other formats or for incorrect results or damages resulting from its use.

1	2	3	4	5	6	7	8	9	10	11	12	13	14	15	16
17	18	19	20	21	22	23	24	25	26	27	28	29	30	31	32
33	34	35	36	37	38	39	40	41	42	43	44	45	46	47	48
49	50	51	52	53	54	55	56	57	58	59	60	61	62	63	

△ See the CWZTCD for the type of sign substrate that can be used for each approved sign support.

### EXAMPLES OF SIGN SUPPORTS

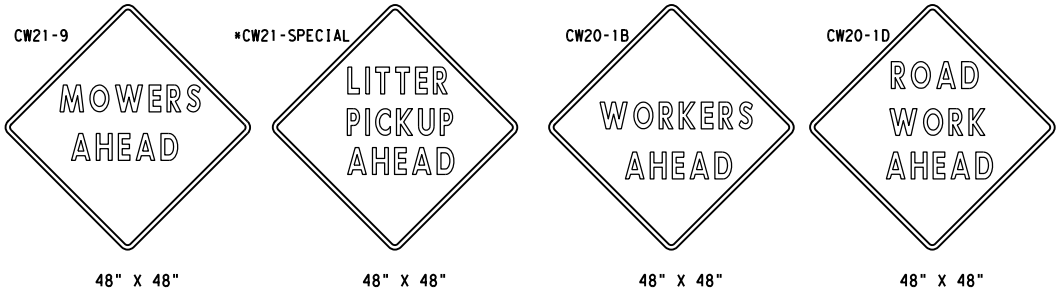
#### SHORT TERM DURATION, DAYTIME USE ONLY PORTABLE SIGN SUPPORTS



Attachment to wooden supports will be by bolts and nuts or screws. Use TxDOT's or manufacturer's recommended procedures for attaching sign substrates to other types of sign supports.

**Nails will NOT be allowed.**

The upright SHALL be made of hollow-profile plastic lumber (HPPL). Wood or metal shall NOT be used.  
 1 Foot Mounting Height



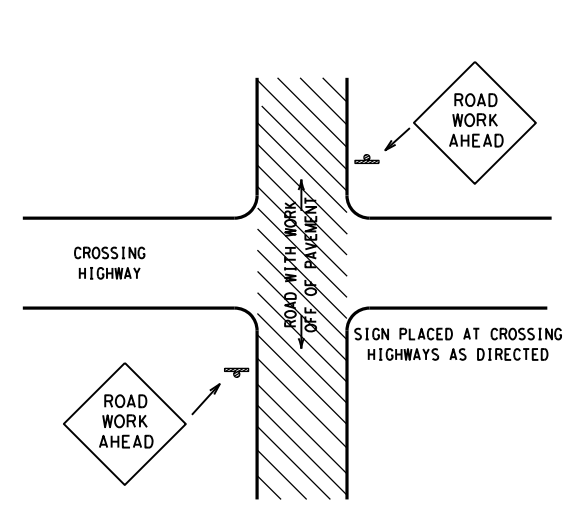
**SIGN IN ACCORDANCE WITH THE TEXAS MANUAL ON UNIFORM TRAFFIC CONTROL DEVICES FOR STREETS AND HIGHWAYS**

**MOWERS AHEAD SIGNS ARE USED FOR MOWING OPERATIONS.**

**LITTER PICKUP AHEAD, ROAD WORK AHEAD AND WORKER AHEAD SIGNS ARE USED AS DIRECTED FOR OTHER MAINTENANCE OPERATIONS WHEN ALL WORK OCCURS OFF OF THE PAVED HIGHWAY SURFACE.**

#### ROLL-UP SIGNS CONFORMING TO DMS-8310 AND THE CWZTCD ALLOWED

\*Letter dimensions and spacing for "CW21-SPECIAL" is the same as C20-1D

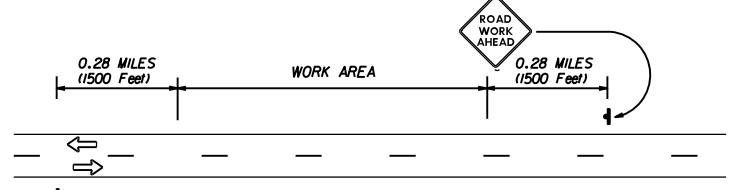


TYPICAL LOCATION OF SIGNS AT HIGHWAY CROSSING

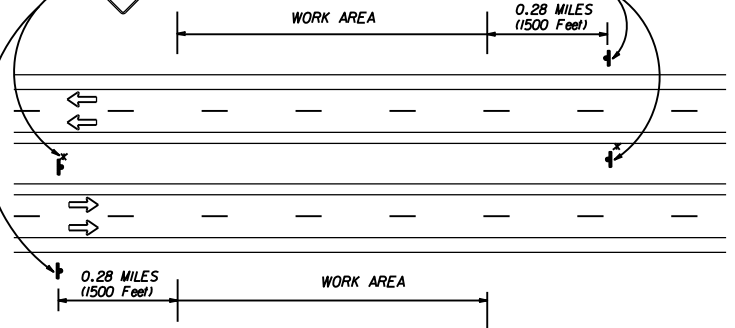
WORK AREA IS A MAXIMUM OF 2.0 MILES UNLESS OTHERWISE DIRECTED. SIGNS MAY REMAIN IN PLACE ONLY DURING DAYLIGHT HOURS. SIGNS ARE TO BE PLACED 6' TO 12' OFF OF THE PAVED SURFACE UNLESS OTHERWISE DIRECTED. ROAD WORK AHEAD SIGNS SHOWN AS EXAMPLES, ONE OF THE FOUR TYPE SIGNS WILL BE USED AS DIRECTED.

\* SIGNS IN THE MEDIAN ARE REQUIRED WHEN WORK OCCURS IN MEDIAN

#### UNDIVIDED HIGHWAY OR FRONTAGE ROAD



#### DIVIDED HIGHWAY



#### TRAFFIC CONTROL PLAN FOR WORK OFF OF THE PAVED SURFACE.

#### GENERAL NOTES FOR WORK ZONE SIGNS

- Contractor shall install and maintain signs in a straight and plumb condition and/or as directed by the Engineer.
- Wooden sign posts shall be painted white.
- Barricades shall NOT be used as sign supports.
- Nails shall NOT be used to attach signs to any support.
- All signs shall be installed in accordance with the plans or as directed by the Engineer. Signs shall be used to regulate, warn, and guide the traveling public safely through the work zone.
- The Contractor may furnish either the sign design shown in the plans or in the "Standard Highway Sign Designs for Texas" (SHSD). The Engineer/Inspector may require the Contractor to furnish other work zone signs that are shown in the TMUTCD but may have been omitted from the plans. Any variation in the plans shall be documented by written agreement between the Engineer and the Contractor's Responsible Person. All changes must be documented in writing before being implemented. This can include documenting the changes in the Inspector's TxDOT diary and having both the Inspector and Contractor initial and date the agreed upon changes. The additional signs requested by the Engineer/Inspector shall not be subsidiary.
- The Contractor shall furnish sign supports listed in the "Compliant Work Zone Traffic Control Device List" (CWZTCD). The Contractor shall install the sign support in accordance with the manufacturer's recommendations. If there is a question regarding installation procedures, the Contractor shall furnish the Engineer a copy of the manufacturer's installation recommendations so that the Engineer can verify the correct procedures are being followed.
- The Contractor is responsible for sign installations and replacing signs with damaged or cracked substrates and/or damaged or marred reflective sheeting as directed by the Engineer/Inspector.
- Identification markings may be shown only on the back of the sign substrate. The maximum height of letters and/or company logos used for identification shall be 1".
- The Contractor shall replace damaged wood posts. New or damaged wood sign posts shall not be spliced.

#### Duration of Work (as defined by the "Texas Manual on Uniform Traffic Control Devices" Part VII)

- The Contractor is responsible for ensuring the sign support and substrate meets crashworthiness. For mowing operation all signs and supports are Short-term Duration for daytime work.
- The Contractor shall furnish the sign sizes shown on this sheet or as directed by the Engineer.

#### SIGN SUBSTRATES

- The Contractor shall ensure that the sign substrate is allowed for the type of sign support that is being used. The CWZTCD lists each substrate that can be used on the different types and models of sign supports.
- "Mesh" type materials are NOT an approved sign substrate.
- All wooden individual sign panels fabricated from 2 or more pieces shall have one or more plywood cleat, 1/2" thick by 6" wide, fastened to the back of the sign and extending fully across the sign. The cleat shall be attached to the back of the sign using wood screws that do not penetrate the face of the sign panel. The screws shall be placed on both sides of the splice and spaced at 6" centers. The Engineer may approve other methods of splicing the sign faces.

#### REFLECTIVE SHEETING

- Reflectorized signs shall be constructed of sheeting meeting the color and retro-reflectivity requirements of DMS-8300 or DMS-8310. The DMS specifications can be accessed from the following web address:  
[http://manuals.dot.state.tx.us:80/dynaweb/colimates/#Generic\\_CollectionView;cs=default;ts=default](http://manuals.dot.state.tx.us:80/dynaweb/colimates/#Generic_CollectionView;cs=default;ts=default)
- White sheeting, meeting the requirements of DMS-8300 Type C (High Specific Intensity), shall be used for signs with white background and channelizing devices.
- Orange sheeting, meeting the requirements of DMS-8300 Type E (Fluorescent Prismatic), shall be used for signs with orange backgrounds.

#### SIGN LETTERS

- All sign letters and numbers shall be clear, and open rounded type uppercase alphabet letters as approved by the Federal Highway Administration (FHWA) and as published in the "Standard Highway Sign Design for Texas" manual. Signs, letters and numbers shall be of first class workmanship in accordance with Department Standards and Specifications.

#### REMOVING OR COVERING

- Signs should be removed or completely covered when not mowing.
- Duct tape or other adhesive material shall NOT be affixed to a sign face.
- Signs and supports shall be removed by the end of the day.

#### SIGN SUPPORT WEIGHTS

- Where sign supports require the use of weights to keep from turning over, the use of sandbags with dry cohesionless sand is recommended.
- The sandbags will be tied shut to keep the sand from spilling and to maintain a constant weight.
- Rock, concrete, iron, steel or other solid objects will not be permitted for use as sign support weights.
- Sandbags should weigh a minimum of 35 lbs and a maximum of 50 lbs.
- Sandbags shall be made of a durable material that tears upon vehicular impact.
- Rubber (such as tire inner tubes) shall NOT be used for sandbags.
- Rubber ballasts (such as those used with cones or edgeline channelizers) shall NOT be used as sign support weights.
- Sandbags shall only be placed along or laid over the base supports of the traffic control device and shall not be suspended above ground level or hung with rope, wire, chains or other fasteners. Sandbags shall be placed along the length of the skids to weigh down the sign supports.
- Sandbags shall NOT be placed under the skid and shall not be used to level sign supports placed on slopes.

#### CONTRACTOR REQUIREMENTS FOR MAINTAINING PERMANENT SIGNS WITHIN THE PROJECT LIMITS

Any sign, sign support or traffic control device that is struck or damaged by the Contractor or his/her construction equipment shall be replaced or repaired as soon as possible by the Contractor at the Contractor's expense.

Only pre-qualified products shall be used. A copy of the "Compliant Work Zone Traffic Control Devices List" (CWZTCD) describes pre-qualified products and their sources and may be obtained by contacting:

Standards Engineer  
 Traffic Operations Division - TE  
 Texas Department of Transportation  
 125 East 11th Street  
 Austin, Texas 78701-2483  
 Phone (512) 416-3120  
 Fax (512) 416-3299

Instructions to locate the "CWZTCD" on TxDOT website are:

Start at website - [www.dot.state.tx.us](http://www.dot.state.tx.us)  
 Click on "About TxDOT",  
 Click on "Organizational Chart",  
 Click on "Traffic Operations Box",  
 Click on "Compliant Work Zone Traffic Control Devices",  
 Click on "View PDF".  
 This site is printable.

**Texas Department of Transportation**  
 Maintenance Division  
 Standard Plans

## ROADSIDE TRAFFIC CONTROL PLAN

SHEET 1 OF 1      RS-TCP-05      NOT TO SCALE

FILE: RSTCP05.DGN	DW: LJB	CK: JG	DW: -	CK: -	NEG NO.:
© TxDOT FEBRUARY 2005		STATE DISTRICT	FEDERAL REGION	FEDERAL AID PROJECT	
REVISED: September 17, 2004	08	N/A	N/A		SHEET 5
REVISED: FEBRUARY 2, 2005 Sign placement in TCP	COUNTY		CONTROL SECTION	JOB	HIGHWAY
REVISED:	JONES		6379	50	001 US180,ETC