

PROJECT NO.			SHEET NO.
RMC 637179001			1
STATE	DIST.	COUNTY	
TEXAS	BMT	NEWTON	
CONT.	SECT.	JOB	HIGHWAY NO.
6371	79	001	US 190, ETC.

INDEX OF SHEETS  
SHEET NO. DESCRIPTION

- 1 TITLE SHEET
- 2 LOCATION MAP
- 3-3B GENERAL NOTES
- 4 QUANTITY SHEET
- 5 SUMMARY SHEET
- 6 \*RS-TCP-05
- 7 \*STRIP-MOW-D-04
- 8 \*STRIP-MOW-ND-04

STATE OF TEXAS  
DEPARTMENT OF TRANSPORTATION

PLANS FOR  
ROUTINE MAINTENANCE PROJECT

MOWING OF RIGHT OF WAY

PROJECT NO: 6371-79-001  
NEWTON COUNTY

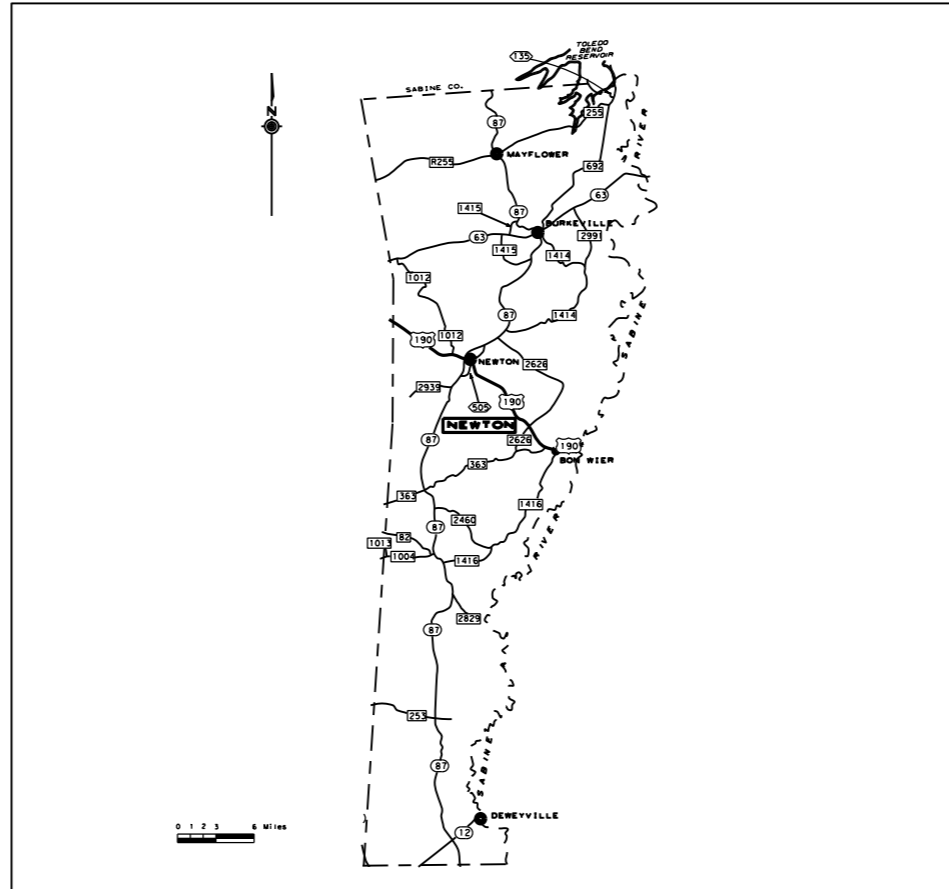
MANAGER NO. 053  
MAINTENANCE SECTION - 06  
ROUTINE MAINTENANCE



*Keith Horn, P.E.*

1/25/2021

\* THE STANDARD SHEETS SPECIFICALLY IDENTIFIED ABOVE HAVE BEEN SELECTED BY ME OR UNDER MY RESPONSIBLE SUPERVISION AS BEING APPLICABLE TO THIS PROJECT.



SUBMITTED FOR LETTING: 1/25/2021

*Keith Horn, P.E.*  
DISTRICT MAINTENANCE ENGINEER

RECOMMENDED FOR LETTING: 1/30/2021

DocuSigned by:  
*Mark N. Spivey, P.E.*  
DIRECTOR OF OPERATIONS

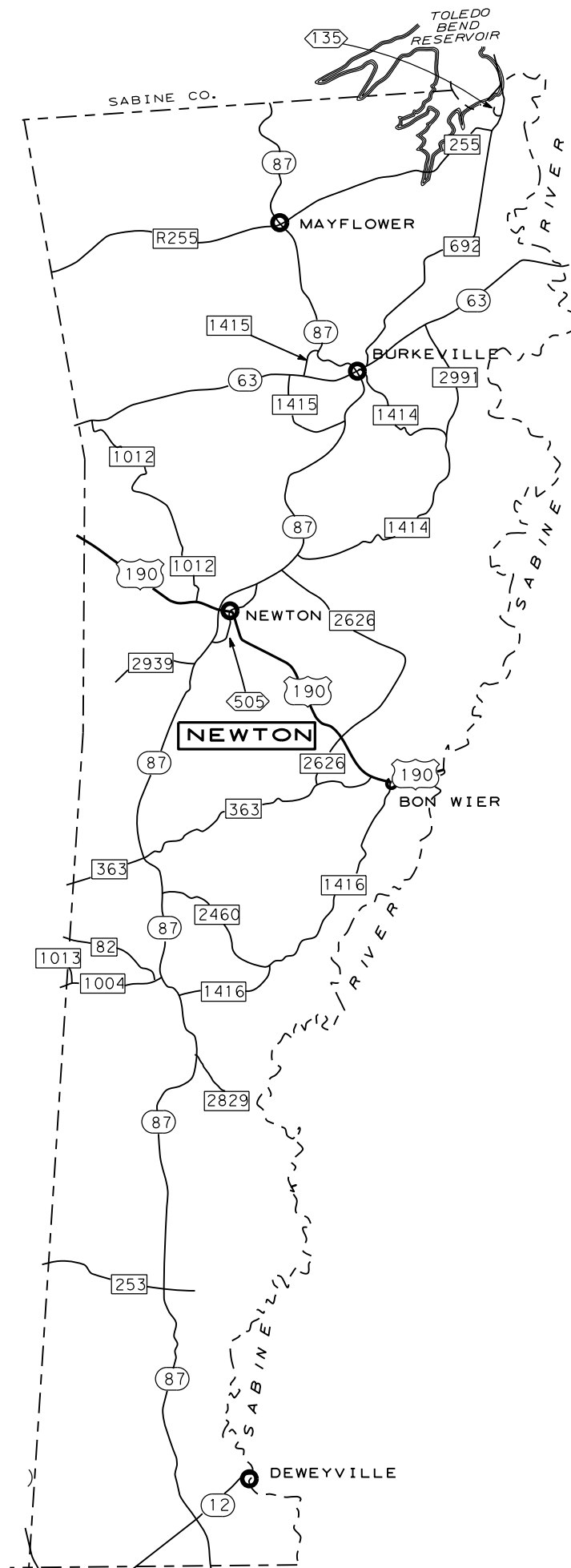
RECOMMENDED FOR LETTING: 1/31/2021

DocuSigned by:  
*Chad Bolme*  
DISTRICT ENGINEER

THE SPECIFICATIONS ADOPTED BY THE TEXAS DEPARTMENT OF TRANSPORTATION, NOVEMBER 1, 2014 AND SPECIFICATION ITEMS INCLUDED IN CONTRACT, WILL GOVERN ON THIS PROJECT.

© By Texas Department of Transportation  
All Rights Reserved

DATE: \$DATES \$TIMES  
FILE: \$FILES



LOCATION MAP

	FED. RD. DIV. RD.	STATE	PROJECT NO.		HIGHWAY
	6	TX			US 190, ETC.
DISTRICT	COUNTY	CONTROL	SECT	JOB	SHEET
BMT	NEWTON	6371	79	001	2

**Project Number:** RMC 637179001  
**County:** Newton  
**Highway:** US 190, ETC.

**Control:** 6371-79-001

**Project Number:** RMC 637179001  
**County:** Newton  
**Highway:** US 190, ETC.

**Control:** 6371-79-001

**General:**

This project includes plans, which are not part of the bid proposal. Plans may be viewed online or downloaded from the website at:

[http://www.txdot.gov/business/contractors\\_consultants/plans\\_online.htm](http://www.txdot.gov/business/contractors_consultants/plans_online.htm)

Plans may be ordered from any of the plan reproduction companies shown on the web at:

[http://www.txdot.gov/business/contractors\\_consultants/repro\\_companies.htm](http://www.txdot.gov/business/contractors_consultants/repro_companies.htm)

Contractor questions on this project are to be emailed to the following individuals:

Vada Byford,  
 Jasper Area Engineer  
[vada.byford@txdot.gov](mailto:vada.byford@txdot.gov)

Earick Adams  
 Newton Maintenance Section Supervisor  
[Earick.Adams@txdot.gov](mailto:Earick.Adams@txdot.gov)

Contractor questions will only be accepted through email, phone and in person by the above individuals.

All Contractor questions will be reviewed by the Area Engineer or Assistant Area Engineer. Once a response is developed, it will be posted to TxDOT's Public FTP at the following Address:

<https://ftp.dot.state.tx.us/pub/txdot-info/Pre-Letting Responses/>

All questions submitted that generate a response will be posted through this site. The site is organized by District, Project Type (Construction or Maintenance), Letting Date, CCSJ/Project Name.

The Contractor will give 48 hour notice to the Maintenance Supervisor for work of the approved date and time to plan to commence work so that inspection arrangements can be made.

This is a two year Contract that will continue as necessary to allow for varying weather conditions that may require spot mowing after the completion of Type I and Type II mowing or other delays.

Equipment will not be left within 30 feet of the travel lane during non-working hours. All equipment will be maintained in good repair for the duration of the Contract. Do not repair or service any equipment on the right of way which will in any way mar the landscape by rendering the soil sterile, damage existing vegetation, or which may have an adverse effect on the proposed use of the land.

To prevent spread of parasitic plants that may be located on the highway right of way, mowing equipment will be pressure washed before beginning mowing operations on State right of way. Mowing equipment will not leave the State right of way to perform other mowing operations without being pressure washed and the equipment will be pressure washed before it returns to the State right of way. The Department inspector will be notified prior to the washing of equipment and will be present during the washing process. The Maintenance Supervisor or a representative of the Department will determine the location to pressure wash the mowing equipment.

Do not begin work on the roadway until 30 minutes after sunrise and remove all signs and equipment from the roadway 30 minutes before sunset.

Workers on foot who are exposed to traffic or to construction equipment within the right of way will wear high-visibility safety apparel meeting the requirements of ISEA "American National Standard for High-Visibility Apparel" labeled as ANSI/15EA -2015 standard performance for Class 2 or 3 risk exposures. Class 3 garments should be considered for high traffic volume work areas.

Personnel will be experienced in items of work in the Contract for which they will be performing. Hard hats meeting ANSI/15EA-2009 requirements will be worn at all times when outside vehicles on mowers that do not have an in-closed cab or within the work area.

Cell phone use while operating mowers and other construction equipment is prohibited. If an emergency arises and the limited use of a cell phone is required, disengage the PTO and move the mower as close to the right of way as possible without blocking the traveling public's sight distance. Once the mower is a safe distance away from the roadway and in the parked position, the operator of the equipment may proceed to use the cell phone.

When a school bus is loading or unloading children within approximately 1000 feet of mowing operations stop all mowing operations until the children are safely out of danger of flying debris.

Refer to the Mowing Summary on the plans for the highways, limits, number of cycles to mow, and the approximate length of each highway.

Quantities as shown on the plans are estimated quantities only. Actual quantities may vary.

The Contractor will make an examination of the project sites and be completely familiar with the nature of work and allow for any work made necessary by unusual conditions or obstacles encountered during the progress of the work.

**Project Number:** RMC 637179001  
**County:** Newton  
**Highway:** US 190, ETC.

**Control:** 6371-79-001

Furnish crews and equipment capable of maintaining work in a continuous manner for the completion of the work listed on the work order. Sufficient equipment and personnel to maintain the work schedule will always be maintained. This may require multiple crews. Each crew working under this Contract will have an English-speaking representative on site at all times. Work will not be permitted when impending weather or freezing temperatures may impair the quality of work.

Within this maintenance section, complete each roadway before moving to the next roadway unless otherwise directed.

**Item 3: Award and Execution of Contract**

**Mowing Phases for 2021 and 2022 are as follows for EACH year:**

Phase 1 – All Tracts, Type II Full Width, 2 cycle-(1,961 acres) – 23 working days

Phase 2 – All Tracts, Type I Strip Mow, 1 cycle – (164 acres) – 2 working days

Phase 3 – All Tracts, Type II Full Width, 2 cycle-(1,961 acres) – 23 working days

\*\*\*All mowing will be executed within the time allotted above for each individual phase. Unfinished mowing or hand trimming cannot be included in the next phase’s working days in accordance with Article 8.3 of 2014 Standard Specifications. Working days allowed to complete a phase is determined by dividing the total number of acres by the production rate (85 acres/working day). Liquidated damages will be charged when work within a phase has not been completed within the allowed number of working days.

A work order will be sent to the Contractor for each Phase, containing the following information:

- Working days allowed to complete the Phase
- Date when time charges for the Phase will begin

**Project Number:** RMC 637179001  
**County:** Newton  
**Highway:** US 190, ETC.

**Control:** 6371-79-001

Working days will be charged Monday through Friday, excluding national holidays (listed below), if weather permits the performance of mowing for a continuous period of at least 7 daylight hours between 7:00 a.m. and 6:00 p.m. Work on Sundays and national holidays will not be permitted except in case of emergency and will require permission from the Engineer in writing.

National holidays are:

- January 1<sup>st</sup>
- last Monday in May
- 4<sup>th</sup> of July
- First Monday in September
- Fourth Thursday in November (Thanksgiving)
- December 25<sup>th</sup>

**Item 502: Barricades, Signs and Traffic Handling**

For this project, Barricades, Signs and Traffic Handling will be subsidiary to the pertinent bid Items.

Furnish signs with barricades and other incidentals necessary for proper traffic control, in accordance with the RS-TCP-05 standard, the latest edition of the “Texas Manual of Uniform Traffic Control Devices for Streets and Highways” and as directed. The Contractor will be responsible for the maintenance, repairs or replacement of all signs, sign stands and safety flags as may be required. All warning signs will be factory made and in satisfactory condition.

**Item 730: Roadside Mowing**

Various locations of right of way may require mowing using means other than normal mowing practices. The Maintenance Supervisor will designate these locations as well as approve the means of accomplishing the mowing. Trimmers or other equipment will be required in areas unable to be reached by mowers.

For Type I strip mowing, the strip width will be 15 feet. Strip mowing consists of mowing a strip of vegetation along the edge of pavement or unpaved shoulder. Strip mowing will include all mowing necessary to maintain adequate sight distance at intersections, private entrances, off ramps, signs, delineators and curves. Mowing will be performed around all appurtenances (signs, delineators, guardrails, culvert headwalls, etc.) that are within the designated strip width. The Contractor will be responsible for damages to appurtenances previously mentioned.

**Project Number:** RMC 637179001

**County:** Newton

**Highway:** US 190, ETC.

**Control:** 6371-79-001

Spot Mowing will be performed on a call-out basis. The minimum quantity per callout for Spot Mowing will be 3 acres. The Contractor will respond to spot mowing within 48 hours as per Section 730.3.2.3.

Spot mowing may also be used to mow in small towns between normal mowing cycles. Quantities in the proposals for spot mowing are an estimated value; they should not be considered as accurate or true, only an estimated amount. The Department will not consider unit cost adjustments for any significant under or over runs on this Contract for spot mowing

The rate of transition between the designated strip width and other areas shall be 6:1; six feet parallel to the roadway for every one foot increase or decrease in width, including Adopt-A-Highway sections.

All highways will be cut to a height of 7 inches. All highway hand trimming will be to a height of approximately 7 inches. Hand trimming is required each time a tract is mowed within 24 hours of mowing the tract.

Cut small bushes and trees up to 2 inches in diameter around all fixed objects or other appurtenances. All vegetation will be cut during each full width cut. (This includes vegetation in wet ditches, outfall channels, back slopes, etc.) Vegetation, such as trees, that are greater than 2 inches in diameter may be left standing. The vegetation in wet ditches will be cut within 3 to 4 inches of the top of the water.

Other construction projects may be in progress on some sections of highways covered by this Contract. Mowing will be performed on these sections of highway as directed. Areas where mowing is impractical because of material stockpiles, grading operations, worksites, etc. will be exempted from the mowing requirements and no deduction from plan quantity acres will be made in these areas. However, if no mowing is done on an appreciable length of the construction project, the tract mowing acre paid will be prorated based on the length of tract actually mowed.

The Engineer will clearly mark non-mow areas in the field.

Strip mowing is for safety purposes and will be performed at the discretion of the Engineer. The cycle should be utilized based on vegetation height rather than a schedule. The use of the strip mow cycle should be implemented when the average vegetation height adjacent to the roadway exceeds 24 inches.



# QUANTITY SHEET

CONTROLLING PROJECT ID 6371-79-001

DISTRICT Beaumont

COUNTY Newton

HIGHWAY US0190

CONTROL SECTION JOB				6371-79-001		TOTAL EST.	TOTAL FINAL
PROJECT ID				A02737677			
COUNTY				Newton			
HIGHWAY				US0190			
ALT	BID CODE	DESCRIPTION	UNIT	EST.	FINAL		
	730-6001	STRIP MOWING	AC	328.000		328.000	
	730-6002	FULL - WIDTH MOWING	AC	7,844.000		7,844.000	
	730-6003	SPOT MOWING	AC	100.000		100.000	

SUMMARY SHEET										
RMC 6371-79-001										
NEWTON COUNTY - NEWTON MAINTENANCE SECTION 06										
TRACT	HIGHWAY	LIMITS	REF MARKERS	LENGTH MILES	TYPE I NUMBER OF 15' STRIP MOWS	TYPE I ACRES IN ONE (1) 15' STRIP	TYPE I TOTAL ACRES 15' STRIP	TYPE II NUMBER FULL WIDTH MOWS	TYPE II ACRES IN ONE (1) FULL WIDTH MOW	TYPE II TOTAL ACRES FULL WIDTH MOW
1	US 190	JASPER C/L TO SABINE RIVER	860-880	20	1	80	80	2	153	306
2	SH 63	JASPER C/L TO SABINE RIVER	776-800	23	1	84	84	2	136	272
3	SH 87	SABINE C/L TO ORANGE C/L	396-470	74	0	0	0	2	556	1112
4	SPUR 272	SH 12 TO END OF MAINTENANCE	428-429	1	0	0	0	2	1	2
5	FM 82	JASPER C/L TO FM 1004	764-768	4	0	0	0	2	30	60
6	FM 363	US 96 TO US 190	768-782	14	0	0	0	2	174	348
7	FM 692	LA STATE LINE TO SH 63	366-381	15	0	0	0	2	86	172
8	FM 1004	JASPER C/L TO SH 87	404-406	4	0	0	0	2	22	44
9	FM 1012	SH 63 TO US 190	328-339	11	0	0	0	2	60	120
10	FM 1414	SH 63 TO SH 87	376-391	16	0	0	0	2	116	232
11	FM 1415	SH 87 N OF BURKEVILLE TO SH 87 S OF BURKEVILLE	376-380	4	0	0	0	2	35	70
12	FM 1416	US 190 TO SH 87	396-411	15	0	0	0	2	109	218
13	FM 2460	SH 87 TO FM 1416	402-408	6	0	0	0	2	44	88
14	FM 2626	SH 87 TO FM 363	386-400	14	0	0	0	2	101	202
15	FM 2829	SH 87 E TO END OF MAINTENANCE	408-410	2	0	0	0	2	15	30
16	FM 2939	SH 87 W TO END OF MAINTENANCE	766-769	4	0	0	0	2	30	60
17	FM 2991	SH 63 TO FM 1414	778-783	5	0	0	0	2	37	74
18	RE 255	JASPER C/L TO FM 692	770-791	21	0	0	0	2	135	270
19	LP 505	SH 87 N OF NEWTON TO SH 87 S OF NEWTON	388-391	4	0	0	0	2	30	60
20	SH 12	ORANGE C/L TO SABINE RIVER	776-783	7	0	0	0	2	45	90
21	FM 253	JASPER C/L TO END OF MAINTENANCE	768-775	7	0	0	0	2	40	80
22	FM 1013	JASPER C/L TO FM 1004	772	1	0	0	0	2	6	12
LENGTH				272						
2021 TOTALS							164			3922
2022 TOTALS							164			3922
2 YEAR CONTRACT TOTALS							164		1961	7844

## MOWING SUMMARY

FED. RD. DIV. NO.	ROUTINE MAINTENANCE NO.		SHEET NO.
6			5
STATE	DIST.	COUNTY	
TEXAS	BMT	NEWTON	
CONT.	SECT.	JOB	HIGHWAY NO.
6371	79	001	US 190, ETC.

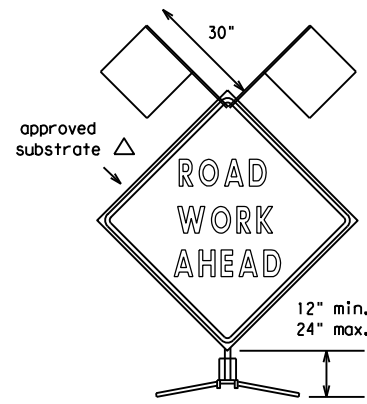
DATE: 01/15/2021 10:05 AM

DISCLAIMER  
The use of this standard is governed by the "Texas Engineering Practice Act". No warranty of any kind is made by TxDOT for any purpose whatsoever. TxDOT assumes no responsibility for the conversion of this standard to other formats or for incorrect results or damages resulting from its use.

1	2	3	4	5	6	7	8	9	10	11	12	13	14	15	16
17	18	19	20	21	22	23	24	25	26	27	28	29	30	31	32
33	34	35	36	37	38	39	40	41	42	43	44	45	46	47	48
49	50	51	52	53	54	55	56	57	58	59	60	61	62	63	

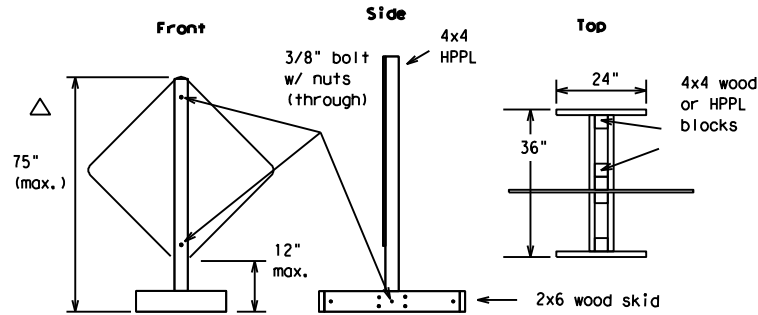
## EXAMPLES OF SIGN SUPPORTS

See the CWZTCD for the type of sign substrate that can be used for each approved sign support.



Flags as required by Engineer or as shown on plans

### SHORT TERM DURATION, DAYTIME USE ONLY PORTABLE SIGN SUPPORTS

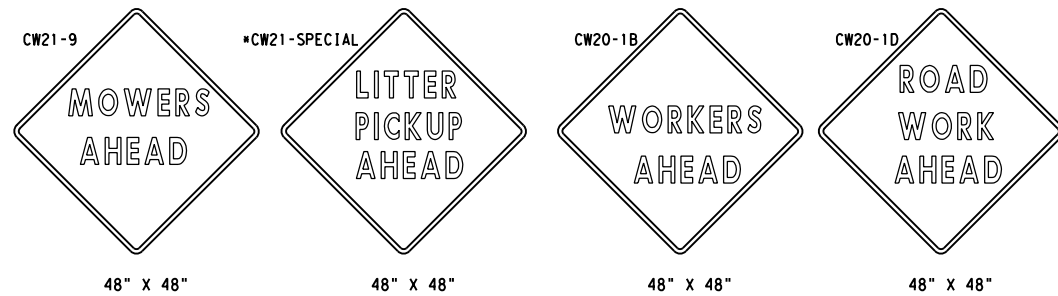


The upright SHALL be made of hollow-profile plastic lumber (HPPL). Wood or metal shall NOT be used.

1 Foot Mounting Height

Attachment to wooden supports will be by bolts and nuts or screws. Use TxDOT's or manufacturer's recommended procedures for attaching sign substrates to other types of sign supports.

**Nails will NOT be allowed.**



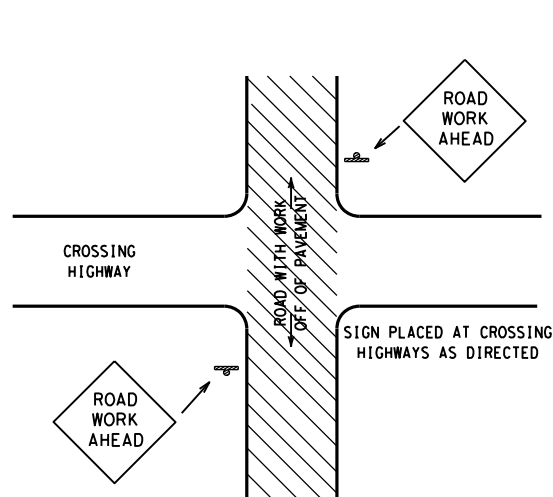
SIGN IN ACCORDANCE WITH THE TEXAS MANUAL ON UNIFORM TRAFFIC CONTROL DEVICES FOR STREETS AND HIGHWAYS

MOWERS AHEAD SIGNS ARE USED FOR MOWING OPERATIONS.

LITTER PICKUP AHEAD, ROAD WORK AHEAD AND WORKER AHEAD SIGNS ARE USED AS DIRECTED FOR OTHER MAINTENANCE OPERATIONS WHEN ALL WORK OCCURS OFF OF THE PAVED HIGHWAY SURFACE.

### ROLL-UP SIGNS CONFORMING TO DMS-8310 AND THE CWZTCD ALLOWED

\*Letter dimensions and spacing for "CW21-SPECIAL" is the same as C20-1D



### TYPICAL LOCATION OF SIGNS AT HIGHWAY CROSSING

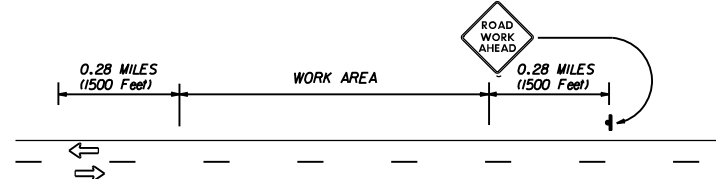
WORK AREA IS A MAXIMUM OF 2.0 MILES UNLESS OTHERWISE DIRECTED. SIGNS MAY REMAIN IN PLACE ONLY DURING DAYLIGHT HOURS.

SIGNS ARE TO BE PLACED 6' TO 12' OFF OF THE PAVED SURFACE UNLESS OTHERWISE DIRECTED.

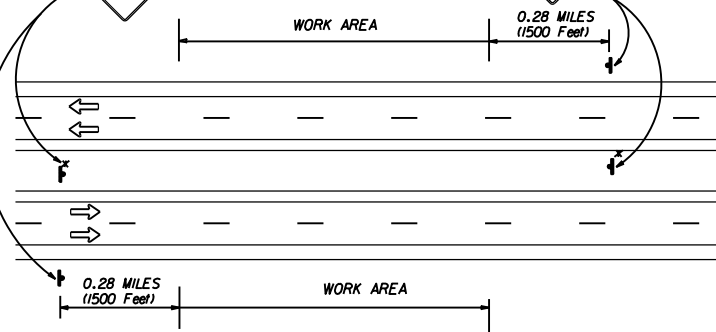
ROAD WORK AHEAD SIGNS SHOWN AS EXAMPLES, ONE OF THE FOUR TYPE SIGNS WILL BE USED AS DIRECTED.

\* SIGNS IN THE MEDIAN ARE REQUIRED WHEN WORK OCCURS IN MEDIAN

### UNDIVIDED HIGHWAY OR FRONTAGE ROAD



### DIVIDED HIGHWAY



### TRAFFIC CONTROL PLAN FOR WORK OFF OF THE PAVED SURFACE.

### GENERAL NOTES FOR WORK ZONE SIGNS

- Contractor shall install and maintain signs in a straight and plumb condition and/or as directed by the Engineer.
- Wooden sign posts shall be painted white.
- Barricades shall NOT be used as sign supports.
- Nails shall NOT be used to attach signs to any support.
- All signs shall be installed in accordance with the plans or as directed by the Engineer. Signs shall be used to regulate, warn, and guide the traveling public safely through the work zone.
- The Contractor may furnish either the sign design shown in the plans or in the "Standard Highway Sign Designs for Texas" (SHSD). The Engineer/Inspector may require the Contractor to furnish other work zone signs that are shown in the TMUTCD but may have been omitted from the plans. Any variation in the plans shall be documented by written agreement between the Engineer and the Contractor's Responsible Person. All changes must be documented in writing before being implemented. This can include documenting the changes in the Inspector's TxDOT diary and having both the Inspector and Contractor initial and date the agreed upon changes. The additional signs requested by the Engineer/Inspector shall not be subsidiary.
- The Contractor shall furnish sign supports listed in the "Compliant Work Zone Traffic Control Device List" (CWZTCD). The Contractor shall install the sign support in accordance with the manufacturer's recommendations. If there is a question regarding installation procedures, the Contractor shall furnish the Engineer a copy of the manufacturer's installation recommendations so that the Engineer can verify the correct procedures are being followed.
- The Contractor is responsible for sign installations and replacing signs with damaged or cracked substrates and/or damaged or marred reflective sheeting as directed by the Engineer/Inspector.
- Identification markings may be shown only on the back of the sign substrate. The maximum height of letters and/or company logos used for identification shall be 1".
- The Contractor shall replace damaged wood posts. New or damaged wood sign posts shall not be spliced.

### Duration of Work (as defined by the "Texas Manual on Uniform Traffic Control Devices" Part VII)

- The Contractor is responsible for ensuring the sign support and substrate meets crashworthiness. For mowing operation all signs and supports are Short-term Duration for daytime work.
- The Contractor shall furnish the sign sizes shown on this sheet or as directed by the Engineer.

### SIGN SUBSTRATES

- The Contractor shall ensure that the sign substrate is allowed for the type of sign support that is being used. The CWZTCD lists each substrate that can be used on the different types and models of sign supports.
- "Mesh" type materials are NOT an approved sign substrate.
- All wooden individual sign panels fabricated from 2 or more pieces shall have one or more plywood cleat, 1/2" thick by 6" wide, fastened to the back of the sign and extending fully across the sign. The cleat shall be attached to the back of the sign using wood screws that do not penetrate the face of the sign panel. The screws shall be placed on both sides of the splice and spaced at 6" centers. The Engineer may approve other methods of splicing the sign faces.

### REFLECTIVE SHEETING

- Reflectorized signs shall be constructed of sheeting meeting the color and retro-reflectivity requirements of DMS-8300 or DMS-8310. The DMS specifications can be accessed from the following web address:  
[http://manuals.dot.state.tx.us:80/dynaweb/colmates/@Generic\\_CollectionView;cs=default;ts=default](http://manuals.dot.state.tx.us:80/dynaweb/colmates/@Generic_CollectionView;cs=default;ts=default)
- White sheeting, meeting the requirements of DMS-8300 Type C (High Specific Intensity), shall be used for signs with white background and channelizing devices.
- Orange sheeting, meeting the requirements of DMS-8300 Type E (Fluorescent Prismatic), shall be used for signs with orange backgrounds.

### SIGN LETTERS

- All sign letters and numbers shall be clear, and open rounded type uppercase alphabet letters as approved by the Federal Highway Administration (FHWA) and as published in the "Standard Highway Sign Design for Texas" manual. Signs, letters and numbers shall be of first class workmanship in accordance with Department Standards and Specifications.

### REMOVING OR COVERING

- Signs should be removed or completely covered when not mowing.
- Duct tape or other adhesive material shall NOT be affixed to a sign face.
- Signs and supports shall be removed by the end of the day.

### SIGN SUPPORT WEIGHTS

- Where sign supports require the use of weights to keep from turning over, the use of sandbags with dry cohesionless sand is recommended.
- The sandbags will be tied shut to keep the sand from spilling and to maintain a constant weight.
- Rock, concrete, iron, steel or other solid objects will not be permitted for use as sign support weights.
- Sandbags should weigh a minimum of 35 lbs and a maximum of 50 lbs.
- Sandbags shall be made of a durable material that tears upon vehicular impact.
- Rubber (such as tire inner tubes) shall NOT be used for sandbags.
- Rubber ballasts (such as those used with cones or edgeline channelizers) shall NOT be used as sign support weights.
- Sandbags shall only be placed along or laid over the base supports of the traffic control device and shall not be suspended above ground level or hung with rope, wire, chains or other fasteners. Sandbags shall be placed along the length of the skids to weigh down the sign supports.
- Sandbags shall NOT be placed under the skid and shall not be used to level sign supports placed on slopes.

### CONTRACTOR REQUIREMENTS FOR MAINTAINING PERMANENT SIGNS WITHIN THE PROJECT LIMITS

Any sign, sign support or traffic control device that is struck or damaged by the Contractor or his/her construction equipment shall be replaced or repaired as soon as possible by the Contractor at the Contractor's expense.

Only pre-qualified products shall be used. A copy of the "Compliant Work Zone Traffic Control Devices List" (CWZTCD) describes pre-qualified products and their sources and may be obtained by contacting:

Standards Engineer  
Traffic Operations Division - TE  
Texas Department of Transportation  
125 East 11th Street  
Austin, Texas 78701-2483  
Phone (512) 416-3120  
Fax (512) 416-3299

Instructions to locate the "CWZTCD" on TxDOT website are:

Start at website - [www.dot.state.tx.us](http://www.dot.state.tx.us)  
Click on "About TxDOT",  
Click on "Organizational Chart",  
Click on "Traffic Operations Box",  
Click on "Compliant Work Zone Traffic Control Devices",  
Click on "View PDF".  
This site is printable.

Texas Department of Transportation  
Maintenance Division  
Standard Plans

## ROADSIDE TRAFFIC CONTROL PLAN

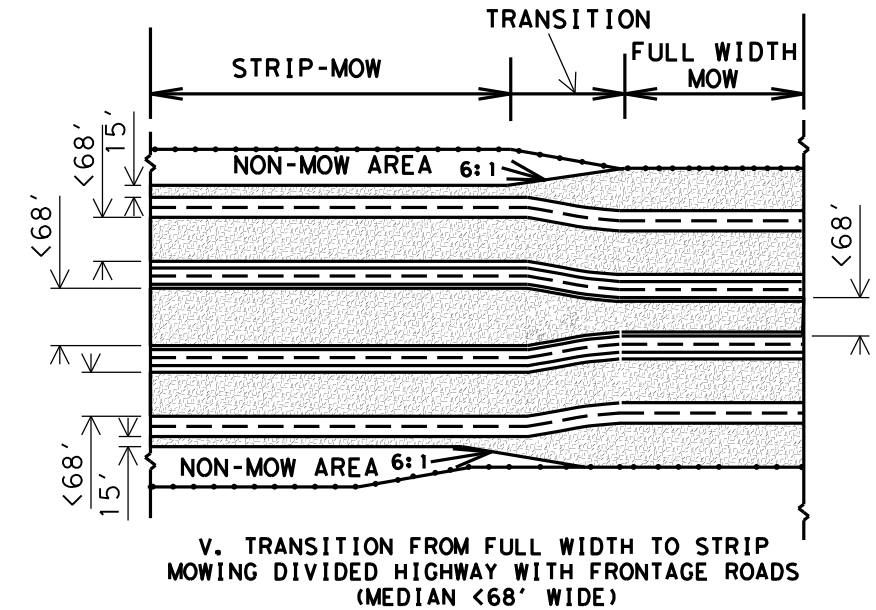
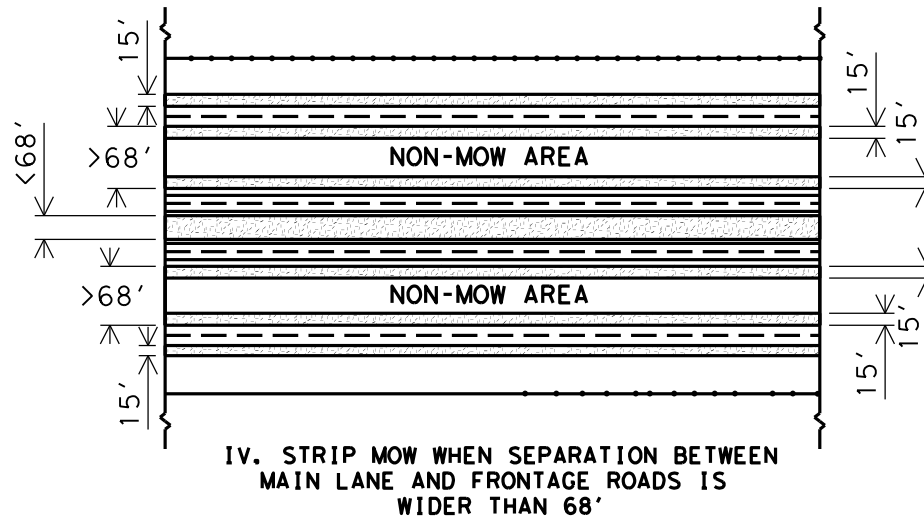
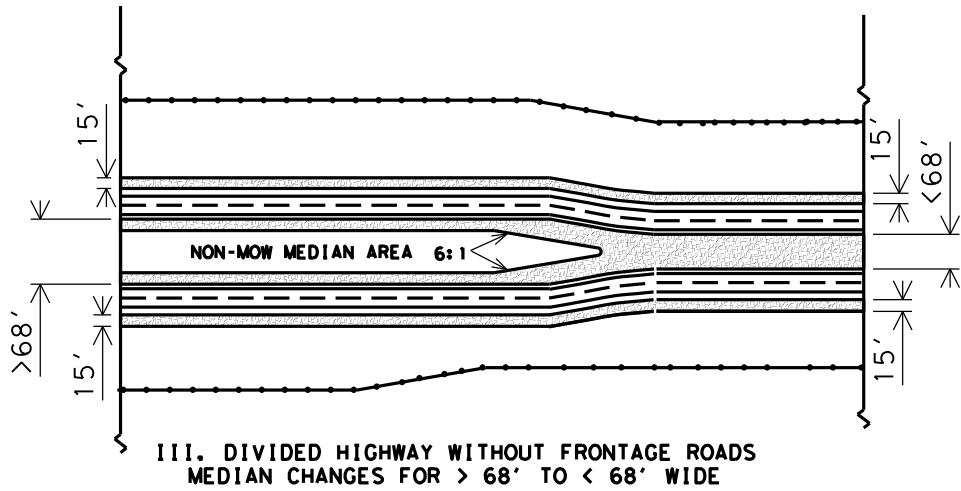
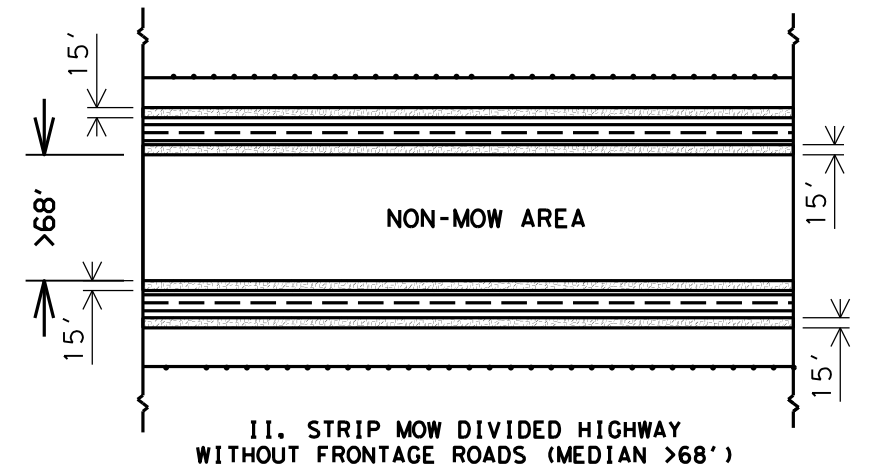
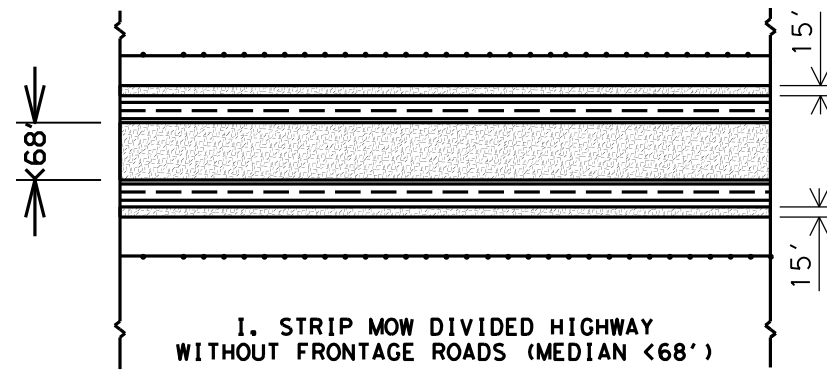
SHEET 1 OF 1 RS-TCP-05 NOT TO SCALE

FILE: RSTCPO5.DGN	DN: LJB	CK: JG	DR: -	CR: -	NEG NO.: -
© TxDOT FEBRUARY 2005		STATE DISTRICT: BMT	FEDERAL REGION: 6	ROUTINE MAINTENANCE SHEET 6	
REVISED: September 17, 2004	COUNTY: NEWTON		CONTROL SECTION: 6371 79	JOB: 001	HIGHWAY: US 190, ETC.



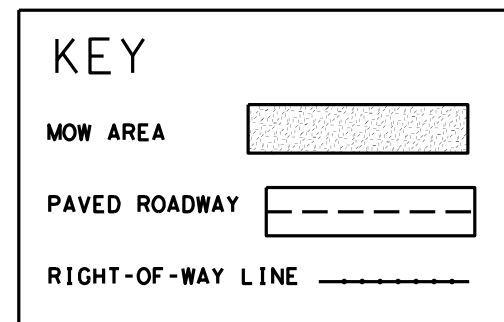
DISCLAIMER  
 The use of this standard is governed by the "Texas Engineering Practice Act". No warranty of any kind is made by TxDOT for any purpose whatsoever. TxDOT assumes no responsibility for the conversion of this standard to other formats or for incorrect results or damages resulting from its use.

LEVELS DISPLAYED															
1	2	3	4	5	6	7	8	9	10	11	12	13	14	15	16
17	18	19	20	21	22	23	24	25	26	27	28	29	30	31	32
33	34	35	36	37	38	39	40	41	42	43	44	45	46	47	48
49	50	51	52	53	54	55	56	57	58	59	60	61	62	63	



**GENERAL NOTES:**

- MOW THE ENTIRE WIDTH OF MEDIANS AND OUTER SEPARATIONS (AREAS BETWEEN MAIN LANES, RAMPS, AND FRONTAGE ROAD) EXCEPT FOR NON-MOW AREAS.
- MOW FULL-WIDTH ALL MEDIANS AND OUTER SEPARATIONS 68' OR LESS FROM PAVEMENT EDGE TO PAVEMENT EDGE.
- FOR MEDIANS AND OUTER SEPARATIONS GREATER THAN 68' MOW A 15' ALONG EACH PAVEMENT EDGE.
- NON-MOW AREAS IN MEDIANS & OUTER SEPARATIONS WILL BE CONSIDERED THE AREA IN MEDIANS AND OUTER SEPARATIONS GREATER THAN 68' BETWEEN THE 15' STRIP MOW AREAS.
- OTHER NON-MOW AREA'S WILL BE SHOWN ELSEWHERE ON PLANS OR MARKED ON THE RIGHT OF WAY.



**Texas Department of Transportation**  
 Maintenance Division  
 Standard Plans

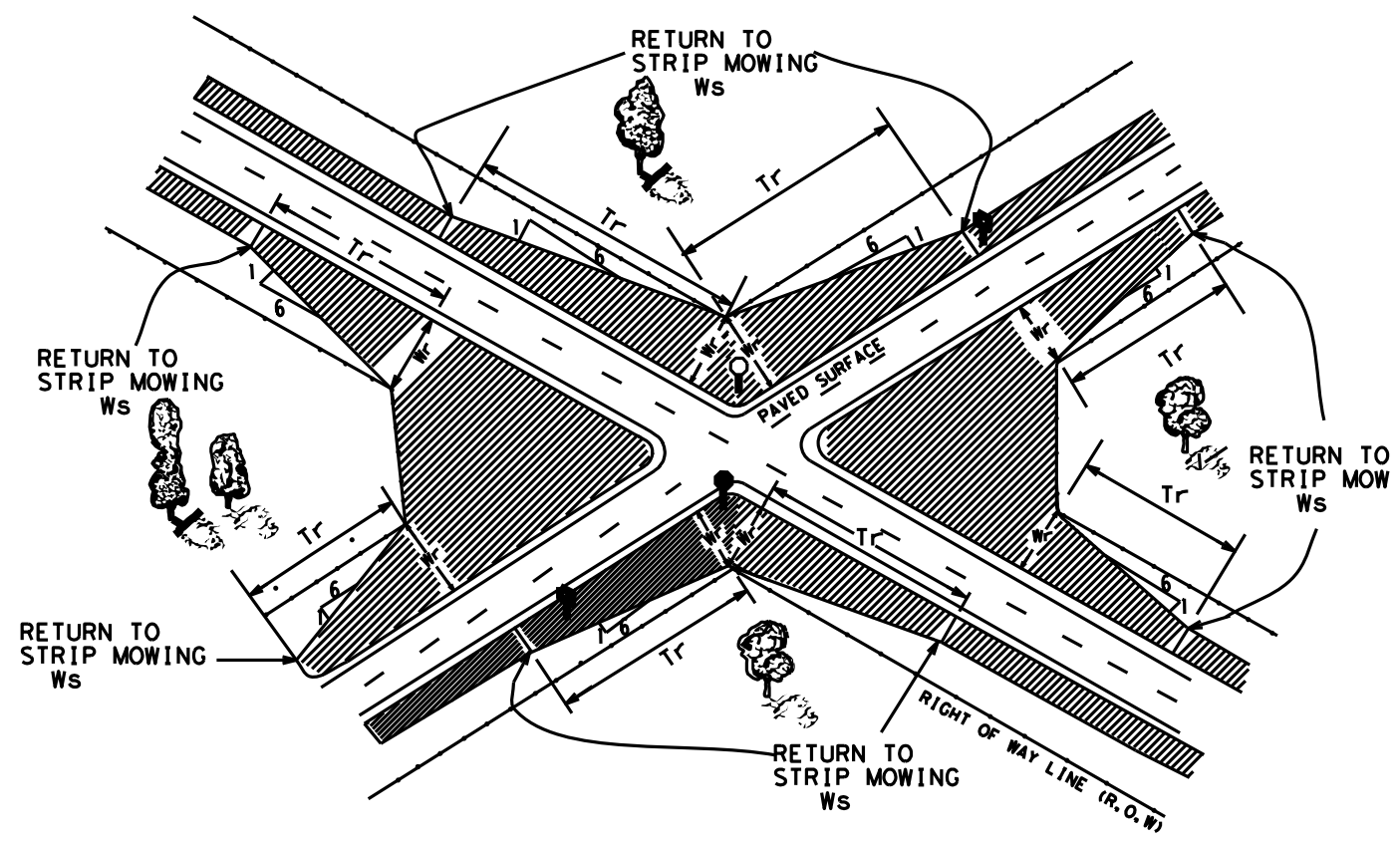
STRIP MOWING  
 (DIVIDED HIGHWAYS)  
 STRIP-MOW-D-04

SHEET 1 OF 1

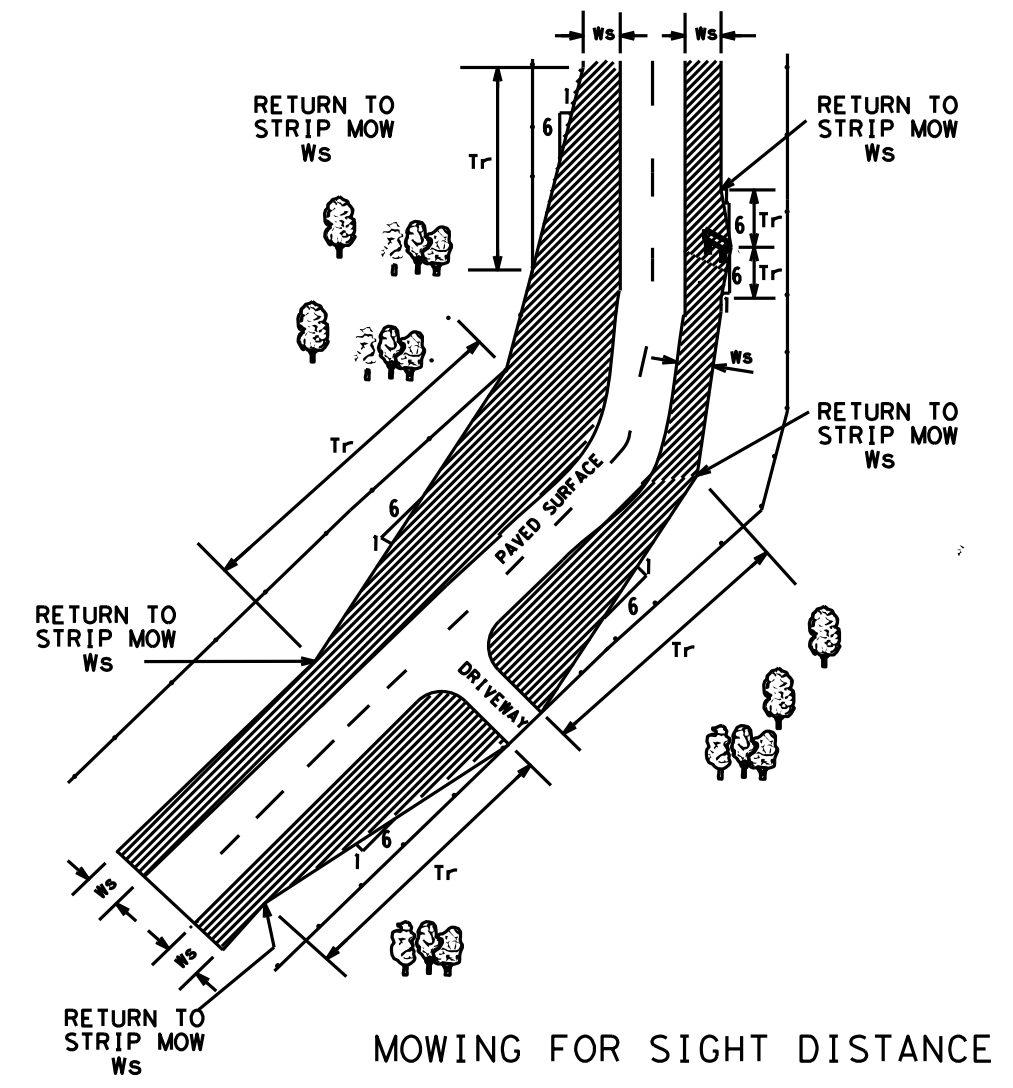
NOT TO SCALE

FILE:	SMOWD04.DGN	DN:	LJB	CK:	JG	DW:	-	CK:	-	NEG NO.:	
© TxDOT JUNE 2004		STATE DISTRICT	BMT	FEDERAL REGION	6	ROUTINE MAINTENANCE			SHEET		7
REVISED:	6/03/2004	COUNTY			CONTROL	SECTION	JOB	HIGHWAY			
REVISED:		NEWTON			6371	79	001	US 190, ETC			

DISCLAIMER  
 The use of this standard is governed by the "Texas Engineering Practice Act". No warranty of any kind is made by TxDOT for any purpose whatsoever. TxDOT assumes no responsibility for the conversion of this standard to other formats or for incorrect results or damages resulting from its use.



MOWING FOR SIGHT DISTANCE  
 WITH TRANSITION FROM INTERSECTION  
 BACK TO STRIP MOWING



MOWING FOR SIGHT DISTANCE  
 TRANSITIONS AT DRIVEWAYS,  
 SIGNS, AND CURVES

**GENERAL NOTES:**

1. THE NORMAL WIDTH FOR STRIP MOWING IS 15' UNLESS OTHERWISE SHOWN ON THE PLANS.
2. MOW TO THE R.O.W. LINE IN FRONT OF BUSINESSES, RESIDENCES, CHURCHES, OR CULTIVATED FIELDS UNLESS OTHERWISE SHOWN ON THE PLANS.
3. TRANSITION FOR SIGHT DISTANCE TO R.O.W LINE OR AROUND SIGNS AS SHOWN ON THIS SHEET UNLESS OTHERWISE SHOWN ON THE PLANS.

————— RIGHT OF WAY LINE

▨ MOWING LOCATION

Wr - R.O.W. WIDTH  
 (AT START OF TRANSITION)

Ws - STRIP MOWING WIDTH

Tr - TRANSITION

 *Texas Department of Transportation*  
 Maintenance Division  
 Standard Plans

STRIP MOWING NON-DIVIDED HIGHWAYS

STRIP-MOW-ND-04

SHEET 1 OF 1 NOT TO SCALE

FILE:	SMOWND04.DGN	DN:	LJB	CK:	JG	DW:	-	CK:	-	NEG NO.:	
	© TxDOT 2004	STATE DISTRICT	FEDERAL REGION	ROUTINE MAINTENANCE				SHEET			
REVISED:	5/18/2004	LJB	BMT	6				8			
REVISED:				COUNTY	CONTROL	SECTION	JOB	HIGHWAY			
REVISED:				NEWTON	6371	79	001	US 190, ETC.			

LEVELS DISPLAYED

1	2	3	4	5	6	7	8	9	10	11	12	13	14	15	16
17	18	19	20	21	22	23	24	25	26	27	28	29	30	31	32
33	34	35	36	37	38	39	40	41	42	43	44	45	46	47	48
49	50	51	52	53	54	55	56	57	58	59	60	61	62	63	