

Project Number: RMC 6458-31-001

County: Hopkins

Control: 6458-31-001

Highway: SH 19, ETC.

GENERAL NOTES:

PROJECT DESCRIPTION: This project consists of mowing roadside vegetation on various highways in Hopkins County as denoted on the location map.

Use batwing rotary mowers with deflection devices.

The Department will inspect equipment to ensure that all mowers are adjusted properly for the correct mowing height and meet all safety requirements prior to beginning mowing operations and at any time during the contract period.

Contractor questions on this project are to be addressed to the following individual(s):

Sulphur Springs Area Office

Jesse Herrera, P.E. – Jesse.Herrera@txdot.gov

Dustin Lyday, P.E. – Dustin.Lyday@txdot.gov

Questions may be submitted via the Letting Pre-Bid Q&A web page. This webpage can be accessed from the Notice to Contractors dashboard located at the following Address:

<https://tableau.txdot.gov/views/ProjectInformationDashboard/NoticetoContractors>

All contractor questions will be reviewed by the Engineer. All questions and any corresponding responses that are generated will be posted through the same Letting Pre-Bid Q&A web page.

The Letting Pre-Bid Q&A web page for each project can be accessed by using the dashboard to navigate to the project you are interested in by scrolling or filtering the dashboard using the controls on the left. Hover over the blue hyperlink for the project you want to view the Q&A for and click on the link in the window that pops up.

Contact the project manager for any questions concerning locations of non-mow areas.

TXDOT PROJECT SUPERVISOR: All work on this contract will be scheduled and directed by the following person. Payment will be made on a monthly basis for work completed and accepted according to specifications. All payment requests shall be directed to the same.

Joshua Redar, Maintenance Section Supervisor
1100 N Hillcrest Drive
Sulphur Springs, TX 75483
Office (903) 885-4031
Fax (903) 439-3622

Project Number: RMC 6458-31-001

County: Hopkins

Control: 6458-31-001

Highway: SH 19, ETC.

Contract Prosecution: Each contract awarded by the Department stands on its own and as such, is separate from other contracts. A Contractor awarded multiple contracts must be capable and sufficiently staffed to concurrently process all contracts at the same time.

ITEM 2: INSTRUCTION TO BIDDERS

View plans on-line or download from the web at:

<http://www.txdot.gov/business/letting-bids/plans-online.html>

Order plans from any of the plan reproduction companies shown on the web at:

<http://www.txdot.gov/business/letting-bids/repro-companies.html>

ITEM 5: CONTROL OF THE WORK

Utilize a crew experienced in the work of mowing roadside vegetation.

ITEM 7: LEGAL RELATIONS AND RESPONSIBILITIES

Repair damage caused by the Contractor's operations to the highway right of way, signs, fences, delineators, plant materials or any other appurtenances, part of or adjacent to the highway facility. Report such damages to the Department at the time of occurrence.

When damage is of the nature that the repair can be made by the Contractor, then the Contractor is to, at his own expense, repair the damage to the Department's satisfaction. This would include straightening all signs, delineators, etc., knocked out of plumb. Unless otherwise reported to the inspector before work begins, it is assumed that all signs, mailbox posts, delineators, etc. are plumb.

When damage is of the nature that the repair must be made by the Department, such as damage to signals, school zone assemblies, etc., a detailed and accurate estimate of the Department's cost to repair the damage will be given to the Contractor in writing as soon as possible after the damage occurs, and a deduction for the estimated cost will be made from the payment estimate during the month in which the damage occurred. When actual repairs are completed and actual cost is determined an adjustment will be made, if necessary, during the monthly payment estimate in the month when repairs are completed by the Department. Repairs by the Department and settlement of actual cost will be done as soon as possible.

When damage is of the nature that a sign, delineator, mailbox post, or other Department property must be replaced by the Department, a deduction for the cost of replacement will be made from the payment estimate during the month in which the damage occurred. Replacement costs will be charged in accordance with the Replacement Cost Estimating Document prepared by the Traffic Operations Division, dated 9-2015, and included in the plans.

Project Number: RMC 6458-31-001

County: Hopkins

Control: 6458-31-001

Highway: SH 19, ETC.

Replace damaged mailboxes, at the Contractor's expense, with ones of equal or better quality than the ones damaged.

There are no significant traffic generator events identified.

ITEM 8: PROSECUTION AND PROGRESS

The Engineer will authorize the first cycle to begin June 1. Time charges will begin when work begins or on the 7th calendar day following the authorization date if no work has begun.

Begin the second cycle within seven days of the authorization date to begin work.

The Department will issue a written notice to begin a roadside mowing cycle. The notice will include the number of acres to be mowed, the number of working days allowed to complete the cycle, and the date when time charges for the cycle will start. The number of working days will be determined by dividing the total number of acres required for the cycle by the daily average rate to be mowed.

To coordinate with TxDOT's internal herbicide program, submit a sequence of work prior to beginning each cycle. Submit a sequence of work for the first cycle no later than May 15. Mow all tracts along SH 19, SH 11, SH 154, and Spur 301 prior to any other locations unless otherwise approved by the Engineer: Submit a sequence of work for the second cycle no later than September 15. Mow all tracts along SH 19, SH 11, SH 154, and Spur 301 after all other locations in the contract have been completed unless otherwise approved by the Engineer.

Time will be computed according to Item 8.3.1.6, Other.

Working days will be charged Monday through Friday, excluding national holidays, if weather or other conditions permit the performance of the principle unit of work underway, as determined by the Engineer, for a continuous period of at least 7 hr. between 7:00 A.M. and 6:00 P.M., unless otherwise shown in the Contract. The Contractor has the option of working on Saturdays or state holidays. Provide sufficient advance notice to the Engineer when scheduling work on Saturdays or state holidays. Work on Sundays and national holidays will not be permitted without written permission of the Engineer. If work requiring an Inspector to be present is performed on a Saturday, Sunday, or any holiday, and weather or other conditions permit the performance of work of 7 hr. between 7:00 A.M. and 6:00 P.M., a working day will be charged.

In reference to Item 8.3.2. Restricted Work Hours, mowing operations will not begin until thirty minutes after sunrise and will end thirty minutes before sunset.

Liquidated damages, as set forth in Special Provision 000-1243 shall be assessed if work is not completed within the specified number of working days per cycle.

Project Number: RMC 6458-31-001

County: Hopkins

Control: 6458-31-001

Highway: SH 19, ETC.

If the total number of working days is not used during the completion of a cycle, the working days will not be carried forward to a subsequent cycle.

ITEM 500: MOBILIZATION

One callout mobilization will be paid for each full width mowing cycle and each work order for spot mowing. A work order may include multiple locations.

ITEM 502: BARRICADES, SIGNS, AND TRAFFIC HANDLING

The Contractor's personnel shall be dressed in approved safety attire while outside vehicles and/or while performing work on the highway right of way. For daytime and nighttime activity, flaggers shall wear high-visibility safety apparel that meets the Performance Class 2 or 3 requirements of the ANSI/ISEA 107-2004 publication entitled "American National Standard for High-Visibility Apparel and Headwear".

All traffic control shall be in accordance with the "Texas Manual on Uniform Traffic Control Devices" (TMUTCD). Traffic Control will be considered subsidiary to the various bid items. No more than one lane shall be blocked at any time on any highway.

Use only signs that are professionally built.

Comply with the respective signs and portable sign supports as shown on the Roadside Traffic Control Plan Sheet.

ITEM 730: ROADSIDE MOWING

Full-Width Mowing –

The Contractor shall be responsible for removing and replacing guardrail, posts, bolts, nuts, etc, in those areas where entry cannot be made in any other way.

Mow a minimum of 125 acres per day.

Hand trim all sloped areas that are 3:1 ratio or steeper.

Hand trimming shall be cut to approximately four inches (4").

Use of all-terrain vehicles (ATV's) are allowed for hand trimming.

Follow the Texas Traffic Law, Transportation Code (TRC 663.037) on all-terrain vehicles.

Project Number: RMC 6458-31-001

County: Hopkins

Control: 6458-31-001

Highway: SH 19, ETC.

Spot Mowing -

Work requests are made on a callout basis. The minimum quantity per callout is three acres. If a weather event prevents a full seven hour work day, the day will be credited appropriately and the work must be done on the very next working day weather will permit.

Work must begin in the morning on one of the next two working days following notification. The seven day grace period from time charges does not apply to Spot Mowing callouts. Ten working days are set up in this contract to cover Spot Mowing.



Estimate & Quantity Sheet

CONTROLLING PROJECT ID 6458-31-001

DISTRICT Paris
HIGHWAY SH0019

COUNTY Hopkins

CONTROL SECTION JOB				6458-31-001		TOTAL EST.	TOTAL FINAL
PROJECT ID				A00205459			
COUNTY				Hopkins			
HIGHWAY				SH0019			
ALT	BID CODE	DESCRIPTION	UNIT	EST.	FINAL		
	500-6033	MOBILIZATION (CALLOUT)	EA	3.000		3.000	
	730-6002	FULL - WIDTH MOWING	AC	5,060.000		5,060.000	
	730-6003	SPOT MOWING	AC	150.000		150.000	

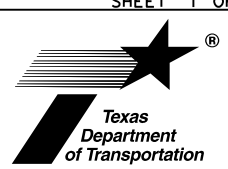
SUMMARY OF MOWING

Tract No.	Highway	Limits	Ref. Marker	Length Miles	ITEM 730-6002 FULL WIDTH MOWING			
					No. of Full Width Mowing Cycles	Acres Per One Full Width Mowing Cycle	Total Acres Full Width Mowing	No. of Working Days Per Cycle
1	US 67	From: IH 30 To: IH 30 (Brashear)	326 328	1.49	2	7	14	0.056
2	US 67	From: IH 30 To: FM 269 (Weaver)	306 308	1.12	2	10	20	0.080
3	SH 19/154	From: Delta County Line To: IH 30	226 243	16.09	2	146	292	1.168
4	SH 11	From: Hunt County Line To: SH 19	654 670	14.61	2	96	192	0.768
5	SH 11	From: SH 19 To: FM 269	670 686	15.11	2	121	242	0.968
6	SH 154	From: IH 30 To: Wood County Line	671 681	10.56	2	80	160	0.640
7	SH 19	From: IH 30 To: Rains County Line	243 253	10.63	2	149	298	1.192
8	FM 1567	From: Hunt County Line To: SH 11	642 671	27.96	2	273	546	2.184
9	FM 2081	From: FM 1567 To: Rains County Line	248 250	1.49	2	14	28	0.112
10	FM 2297	From: IH 30 To: FM 1567	240 248	7.52	2	96	192	0.768
11	FM 2560	From: SH 11 To: FM 1567	242 248	5.41	2	54	108	0.432
12	FM 2948	From: FM 1567 To: FM 69	246 251	4.41	2	46	92	0.368
13	FM 1870	From: IH 30 To: SH 11	238 245	7.02	2	76	152	0.608
14	FM 69	From: IH 30 To: FM 269	241 257	14.29	2	114	228	0.912
15	FM 275	From: IH 30 To: Rains County Line	241 252	10.87	2	79	158	0.632
16	FM 2653	From: IH 30 To: FM 275	241 250	8.70	2	79	158	0.632
17	FM 3389	From: IH 30 To: FM 1567	240 247	7.02	2	58	116	0.464
18	FM 71	From: Delta County Line To: SH 19	648 662	15.72	2	108	216	0.864

DATE: 08/02/2011 08:54 AM
FILE: TxDOT_Sheets_XM.cel

QUANTITY SUMMARY

SHEET 1 OF 2



CONT	SECT	JOB	HIGHWAY
6458	31	001	SH 19, ETC.
DIST	COUNTY		SHEET NO.
PAR	HOPKINS		4

SUMMARY OF MOWING

Tract No.	Highway	Limits	Ref. Marker	Length Miles	ITEM 730-6002 FULL WIDTH MOWING			
					No. of Full Width Mowing Cycles	Acres Per One Full Width Mowing Cycle	Total Acres Full Width Mowing	No. of Working Days Per Cycle
19	SP 71	From: End of Project To: FM 71	656 657	0.73	2	6	12	0.048
20	FM 2285	From: FM 71 To: SH 154	230 240	10.01	2	110	220	0.880
21	FM 2653	From: FM 71 To: IH 30	232 242	9.82	2	98	196	0.784
22	FM 3134	From: FM 71 To: SH 11	642 648	5.28	2	58	116	0.464
23	FM 275	From: SH 11 To: FM 499 (CUMBY)	234 240	4.97	2	43	86	0.344
24	FM 499	From: Hunt County Line To: IH 30 R.O.W. EAST (CUMBY)	642 646	3.29	2	14	28	0.112
25	FM 71	From: SH 19 To: FM 69	661 674	11.81	2	120	240	0.960
26	FM 3236	From: FM 71 To: FM 1537	228 236	7.02	2	70	140	0.560
27	FM 1537	From: SH 19 To: FM 69	656 662	5.78	2	46	92	0.368
28	FM 1536	From: SH 19 To: FM 71	656 664	7.52	2	69	138	0.552
29	FM 69	From: End of Project To: IH 30 R.O.W.	222 242	19.20	2	184	368	1.472
30	FM 3505	From: End of Project To: FM 71	198 200	1.37	2	20	40	0.160
31	BU 67	From: Reservoir Street To: IH 30	652 656	3.29	2	22	44	0.176
32	BU 67	From: Weaver Street To: IH 30	657 659	1.68	2	6	12	0.048
33	SP 2285	From: FM 2285 To: End of Project	240 240	0.37	2	5	10	0.040
34	LP 301	From: LP 301 To: IH 30	236 239	2.80	2	53	106	0.424
TOTAL TRACT 1 THROUGH 34				274.96		2530	5060	21

Working days figured on 125 acres per day.


Summary of Working Days:

First Cycle Mowing Tracts 1-34: 21

Second Cycle Mowing Tracts 1-34: 21

Days Allowed for Spot Mowing: 10

Total Working Days: 52



CONT	SECT	JOB	HIGHWAY
6458	31	001	SH 19, ETC.
DIST	COUNTY		SHEET NO.
PAR	HOPKINS		5

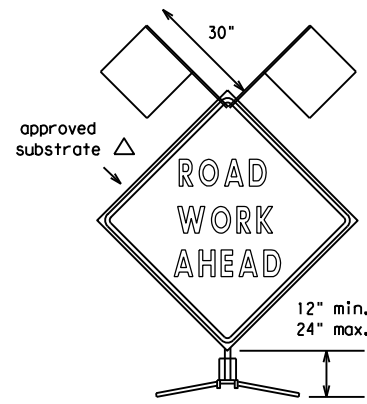
QUANTITY SUMMARY

DISCLAIMER
The use of this standard is governed by the "Texas Engineering Practice Act". No warranty of any kind is made by TxDOT for any purpose whatsoever. TxDOT assumes no responsibility for the conversion of this standard to other formats or for incorrect results or damages resulting from its use.

1	2	3	4	5	6	7	8	9	10	11	12	13	14	15	16
17	18	19	20	21	22	23	24	25	26	27	28	29	30	31	32
33	34	35	36	37	38	39	40	41	42	43	44	45	46	47	48
49	50	51	52	53	54	55	56	57	58	59	60	61	62	63	

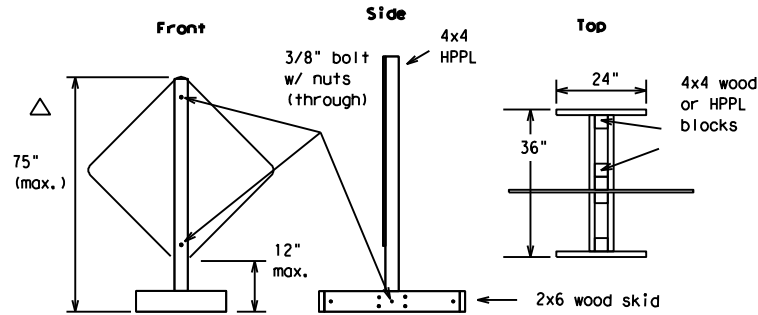
EXAMPLES OF SIGN SUPPORTS

See the CWZTCD for the type of sign substrate that can be used for each approved sign support.



Flags as required by Engineer or as shown on plans

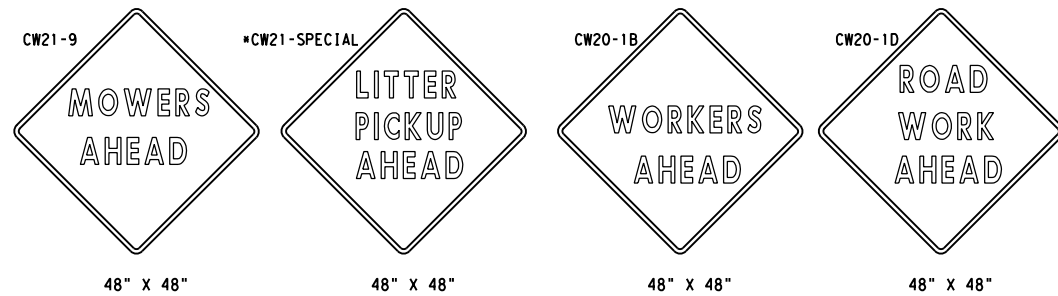
SHORT TERM DURATION, DAYTIME USE ONLY PORTABLE SIGN SUPPORTS



The upright SHALL be made of hollow-profile plastic lumber (HPPL). Wood or metal shall NOT be used.
1 Foot Mounting Height

Attachment to wooden supports will be by bolts and nuts or screws. Use TxDOT's or manufacturer's recommended procedures for attaching sign substrates to other types of sign supports.

Nails will NOT be allowed.



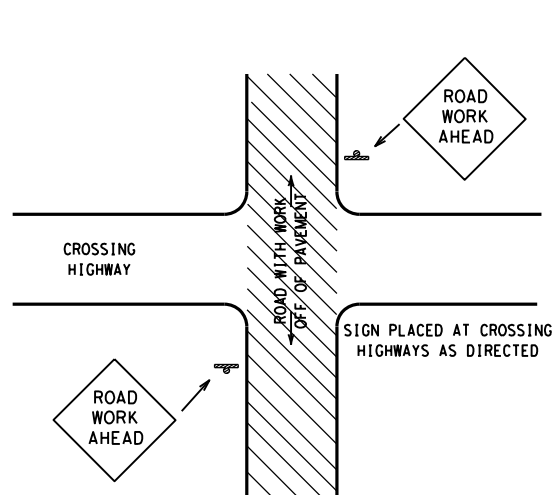
SIGN IN ACCORDANCE WITH THE TEXAS MANUAL ON UNIFORM TRAFFIC CONTROL DEVICES FOR STREETS AND HIGHWAYS

MOWERS AHEAD SIGNS ARE USED FOR MOWING OPERATIONS.

LITTER PICKUP AHEAD, ROAD WORK AHEAD AND WORKER AHEAD SIGNS ARE USED AS DIRECTED FOR OTHER MAINTENANCE OPERATIONS WHEN ALL WORK OCCURS OFF OF THE PAVED HIGHWAY SURFACE.

ROLL-UP SIGNS CONFORMING TO DMS-8310 AND THE CWZTCD ALLOWED

*Letter dimensions and spacing for "CW21-SPECIAL" is the same as C20-1D



TYPICAL LOCATION OF SIGNS AT HIGHWAY CROSSING

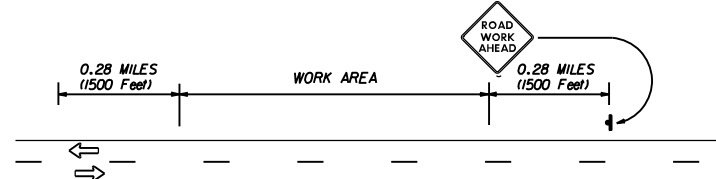
WORK AREA IS A MAXIMUM OF 2.0 MILES UNLESS OTHERWISE DIRECTED. SIGNS MAY REMAIN IN PLACE ONLY DURING DAYLIGHT HOURS.

SIGNS ARE TO BE PLACED 6' TO 12' OFF OF THE PAVED SURFACE UNLESS OTHERWISE DIRECTED.

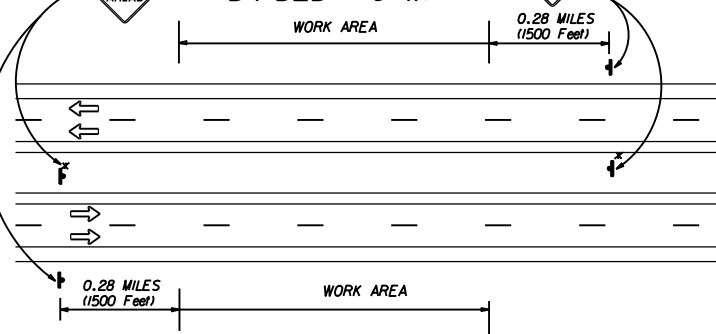
ROAD WORK AHEAD SIGNS SHOWN AS EXAMPLES, ONE OF THE FOUR TYPE SIGNS WILL BE USED AS DIRECTED.

* SIGNS IN THE MEDIAN ARE REQUIRED WHEN WORK OCCURS IN MEDIAN

UNDIVIDED HIGHWAY OR FRONTAGE ROAD



DIVIDED HIGHWAY



TRAFFIC CONTROL PLAN FOR WORK OFF OF THE PAVED SURFACE.

GENERAL NOTES FOR WORK ZONE SIGNS

- Contractor shall install and maintain signs in a straight and plumb condition and/or as directed by the Engineer.
- Wooden sign posts shall be painted white.
- Barricades shall NOT be used as sign supports.
- Nails shall NOT be used to attach signs to any support.
- All signs shall be installed in accordance with the plans or as directed by the Engineer. Signs shall be used to regulate, warn, and guide the traveling public safely through the work zone.
- The Contractor may furnish either the sign design shown in the plans or in the "Standard Highway Sign Designs for Texas" (SHSD). The Engineer/Inspector may require the Contractor to furnish other work zone signs that are shown in the TMUTCD but may have been omitted from the plans. Any variation in the plans shall be documented by written agreement between the Engineer and the Contractor's Responsible Person. All changes must be documented in writing before being implemented. This can include documenting the changes in the Inspector's TxDOT diary and having both the Inspector and Contractor initial and date the agreed upon changes. The additional signs requested by the Engineer/Inspector shall not be subsidiary.
- The Contractor shall furnish sign supports listed in the "Compliant Work Zone Traffic Control Device List" (CWZTCD). The Contractor shall install the sign support in accordance with the manufacturer's recommendations. If there is a question regarding installation procedures, the Contractor shall furnish the Engineer a copy of the manufacturer's installation recommendations so that the Engineer can verify the correct procedures are being followed.
- The Contractor is responsible for sign installations and replacing signs with damaged or cracked substrates and/or damaged or marred reflective sheeting as directed by the Engineer/Inspector.
- Identification markings may be shown only on the back of the sign substrate. The maximum height of letters and/or company logos used for identification shall be 1".
- The Contractor shall replace damaged wood posts. New or damaged wood sign posts shall not be spliced.

Duration of Work (as defined by the "Texas Manual on Uniform Traffic Control Devices" Part VII)

- The Contractor is responsible for ensuring the sign support and substrate meets crashworthiness. For mowing operation all signs and supports are Short-term Duration for daytime work.
- The Contractor shall furnish the sign sizes shown on this sheet or as directed by the Engineer.

SIGN SUBSTRATES

- The Contractor shall ensure that the sign substrate is allowed for the type of sign support that is being used. The CWZTCD lists each substrate that can be used on the different types and models of sign supports.
- "Mesh" type materials are NOT an approved sign substrate.
- All wooden individual sign panels fabricated from 2 or more pieces shall have one or more plywood cleat, 1/2" thick by 6" wide, fastened to the back of the sign and extending fully across the sign. The cleat shall be attached to the back of the sign using wood screws that do not penetrate the face of the sign panel. The screws shall be placed on both sides of the splice and spaced at 6" centers. The Engineer may approve other methods of splicing the sign faces.

REFLECTIVE SHEETING

- Reflectorized signs shall be constructed of sheeting meeting the color and retro-reflectivity requirements of DMS-8300 or DMS-8310. The DMS specifications can be accessed from the following web address:
http://manuals.dot.state.tx.us:80/dynaweb/colmates/@Generic_CollectionView;cs=default;ts=default
- White sheeting, meeting the requirements of DMS-8300 Type C (High Specific Intensity), shall be used for signs with white background and channelizing devices.
- Orange sheeting, meeting the requirements of DMS-8300 Type E (Fluorescent Prismatic), shall be used for signs with orange backgrounds.

SIGN LETTERS

- All sign letters and numbers shall be clear, and open rounded type uppercase alphabet letters as approved by the Federal Highway Administration (FHWA) and as published in the "Standard Highway Sign Design for Texas" manual. Signs, letters and numbers shall be of first class workmanship in accordance with Department Standards and Specifications.

REMOVING OR COVERING

- Signs should be removed or completely covered when not mowing.
- Duct tape or other adhesive material shall NOT be affixed to a sign face.
- Signs and supports shall be removed by the end of the day.

SIGN SUPPORT WEIGHTS

- Where sign supports require the use of weights to keep from turning over, the use of sandbags with dry cohesionless sand is recommended.
- The sandbags will be tied shut to keep the sand from spilling and to maintain a constant weight.
- Rock, concrete, iron, steel or other solid objects will not be permitted for use as sign support weights.
- Sandbags should weigh a minimum of 35 lbs and a maximum of 50 lbs.
- Sandbags shall be made of a durable material that tears upon vehicular impact.
- Rubber (such as tire inner tubes) shall NOT be used for sandbags.
- Rubber ballasts (such as those used with cones or edgeline channelizers) shall NOT be used as sign support weights.
- Sandbags shall only be placed along or laid over the base supports of the traffic control device and shall not be suspended above ground level or hung with rope, wire, chains or other fasteners. Sandbags shall be placed along the length of the skids to weigh down the sign supports.
- Sandbags shall NOT be placed under the skid and shall not be used to level sign supports placed on slopes.

CONTRACTOR REQUIREMENTS FOR MAINTAINING PERMANENT SIGNS WITHIN THE PROJECT LIMITS

Any sign, sign support or traffic control device that is struck or damaged by the Contractor or his/her construction equipment shall be replaced or repaired as soon as possible by the Contractor at the Contractor's expense.

Only pre-qualified products shall be used. A copy of the "Compliant Work Zone Traffic Control Devices List" (CWZTCD) describes pre-qualified products and their sources and may be obtained by contacting:

Standards Engineer
Traffic Operations Division - TE
Texas Department of Transportation
125 East 11th Street
Austin, Texas 78701-2483
Phone (512) 416-3120
Fax (512) 416-3299

Instructions to locate the "CWZTCD" on TxDOT website are:

Start at website - www.dot.state.tx.us
Click on "About TxDOT",
Click on "Organizational Chart",
Click on "Traffic Operations Box",
Click on "Compliant Work Zone Traffic Control Devices",
Click on "View PDF".
This site is printable.

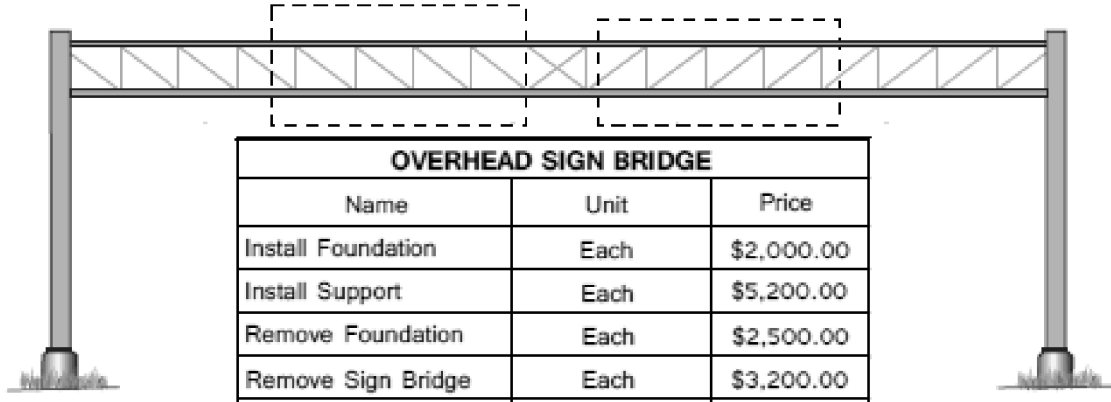
Texas Department of Transportation
Maintenance Division
Standard Plans

ROADSIDE TRAFFIC CONTROL PLAN

SHEET 1 OF 1 RS-TCP-05 NOT TO SCALE

FILE: RSTCPO5.DGN	DN: LJB	CK: JG	DR: -	CR: -	NEG NO.:
© TxDOT FEBRUARY 2005		STATE DISTRICT	FEDERAL REGION	MAINTENANCE PROJECT	SHEET
REVISED: September 17, 2004	PAR	6	RMC 6458-31-001	6	
REVISED: FEBRUARY 2, 2005 Sign placement in TCP		COUNTY	CONTROL SECTION	JOB	HIGHWAY
REVISED:		HOPKINS, ETC.	6458	31	001 SH 19

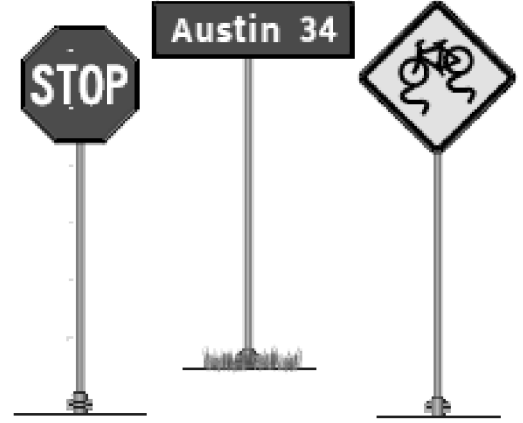
SIGNS



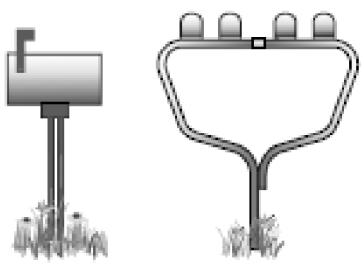
OVERHEAD SIGN BRIDGE		
Name	Unit	Price
Install Foundation	Each	\$2,000.00
Install Support	Each	\$5,200.00
Remove Foundation	Each	\$2,500.00
Remove Sign Bridge	Each	\$3,200.00
Remove Support	Each	\$7,500.00
Steel Truss	per foot of span	\$400.00



LARGE GUIDE SIGNS		
Name	Unit	Price
Foundation	Each	\$850.00
Sign	Per Sq. Ft.	\$25.00
Support	Each	\$1,375.00



SMALL SIGNS		
Name	Unit	Price
Sign	Each	\$700.00



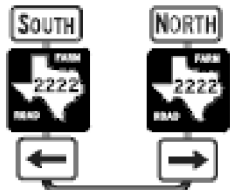
MAIL BOX SUPPORTS	
Name	Price (Each)
Single	\$165.00
Double	\$200.00
Multi-Support	\$500.00



OBJECT MARKER	
Unit	Price
Each	\$300.00



DELINEATOR/ OBJECT MARKER	
Unit	Price
Each	\$100.00



MULTI-SIGN MOUNT		
Name	Unit	Price
Sign	Each	\$900.00

**REPLACEMENT
COST
ESTIMATING
DOCUMENT**



CONT	SECT	JOB	HIGHWAY
6458	31	001	SH 19, ETC.
DIST	COUNTY		SHEET NO.
PAR	HOPKINS		7