

STATE OF TEXAS
DEPARTMENT OF TRANSPORTATION

PLANS OF PROPOSED
STATE HIGHWAY IMPROVEMENT

PROJECT: MMC 6453-15-001

COUNTY: MORRIS, ETC.

HIGHWAY: US 259, ETC.

FOR THE PURCHASE OF MATERIALS ONLY, DENSE GRADED HOT MIX

I HEREBY CERTIFY THAT THE CONSTRUCTION
WORK ON THIS PROJECT WAS PERFORMED IN
SUBSTANTIAL COMPLIANCE WITH THE CONTRACT

Note: See Project Summary Sheets for complete
listing of limits, lengths, equations and exceptions.

Index of Sheets:

- 2, 2D General Notes
- 3 Estimate & Quantity Sheet
- 4 Quantity Summary
- 5 Map - Daingerfield Maintenance Office

CONTRACTOR NAME:
CONTRACTOR ADDRESS:


DATE WORK BEGAN:

DATE WORK COMPLETED:

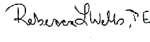
DATE WORK ACCEPTED:

RECOMMENDED FOR LETTING:

APPROVED FOR LETTING:



Director of Maintenance P.E.

DocuSigned by:

 23686C08B28F4A0...
 District Engineer (Atlanta)

SPECIFICATIONS ADOPTED BY THE TEXAS DEPARTMENT
OF TRANSPORTATION, NOVEMBER 1, 2014 AND SPECIAL
SPECIFICATION ITEMS INCLUDED IN THE CONTRACT SHALL
GOVERN ON THIS PROJECT.

DISTRICT	COUNTY	HIGHWAY	PROJECT
ATLANTA	MORRIS, ETC.	US 259, ETC.	MMC 6453-15-001

County: Morris

Control: 6453-15-001

Highway: US 259, etc.

GENERAL NOTES:

General:

Contractor questions on this project are to be addressed to the following individual(s):

Jason Dupree, P.E.
Jason.Dupree@txdot.gov

Charlotte Aslin
Charlotte.Aslin@txdot.gov

Questions may be submitted via the Letting Pre-Bid Q&A web page. This webpage can be accessed from the Notice to Contractors dashboard located at the following Address:
<https://tableau.txdot.gov/views/ProjectInformationDashboard/NoticetoContractors>

All contractor questions will be reviewed by the Engineer. All questions and any corresponding responses that are generated will be posted through the same Letting Pre-Bid Q&A web page.

The Letting Pre-Bid Q&A web page for each project can be accessed by using the dashboard to navigate to the project you are interested in by scrolling or filtering the dashboard using the controls on the left. Hover over the blue hyperlink for the project you want to view the Q&A for and click on the link in the window that pops up.

Questions regarding the plans and/or the project after the contract has been awarded should be referred to the Managing Engineer:

Jason Dupree, P.E.
Atlanta District Director of Maintenance
701 E Main St.
Atlanta, TX 75551
903-799-1248

The intent of this contract is to provide hot mix materials at non-site specific locations within the Daingerfield Maintenance Office area limits. The contractor will provide materials: at the hot mix plant to be loaded into Department owned trucks or Department contracted trucks (pick up), or in a contractor truck to a designated location as defined in the Work Order (delivery).

A map of the Daingerfield Maintenance Office geographic limits is included in this contract.

County: Morris

Control: 6453-15-001

Highway: US 259, etc.

Each contract awarded by the Department stands on its own and as such, is separate from other contracts. A Contractor awarded multiple contracts must be capable and sufficiently staffed to concurrently process any or all contracts.

Department-approved safety hats and safety vests will be worn by all workers and visitors when:

Workers are outside of vehicles at all outdoor worksites. This includes those who occasionally visit worksites either on the highway surface or right-of-way.

Working in areas where there is a danger of head injury from impact, from falling or flying objects, or from electrical shock or burns.

All work on this contract will be scheduled and directed by the Maintenance Section Supervisor Nicholas Norman, 903-645-2519.

Item 10: Maintenance and Traffic Materials Contracts

This project includes plan sheets that are not part of the bid proposal. Views plans on-line or download from the web at: <https://www.txdot.gov/business/letting-bids/plans-online.html>.

Order plans from any of the plan reproduction companies shown on the web at: http://www.dot.state.tx.us/business/contractors_consultants/repro_companies.htm.

This Contract includes non-site specific work. Multiple work orders will be used to procure work of the type identified in the contract at locations that have not yet been determined. Time requirements for the non-site specific work orders will be indicated on each individual Work Order

Prior to beginning operations, the Department will arrange a coordination call between representatives of the Department and the Contractor. In this call, the representatives from all parties will establish points of contact for communication, an issue escalation ladder, delivery location details, and other Contract requirements.

Limit the use of the roadway for the hauling of material to legal loads. Keep the traveled surfaces used in hauling operations free of dirt or other materials.

In accordance with Article 10.4.3.1, this contract may be extended twice not to exceed 360 calendar days for the entire contract term if mutually agreed.

There are 120 calendar days on this contract. Calendar days will be charged in accordance with Article 10.8.2., "Contract Term".

Furnish the tare and maximum gross weights as well as the volume capacity of all vehicles, trucks, truck-tractors, trailers, semi-trailers, or combination of such vehicles used to deliver

County: Morris

Control: 6453-15-001

Highway: US 259, etc.

materials for the contract. Also, furnish calculations supporting these weights and capacities. Provide all measurements required for pay a minimum of 2 days before the equipment is used.

Contractor is responsible for obtaining annual overweight tolerance permit if hauling material which exceeds the legal road weight.

In addition to the complete destination address, each delivery ticket must be clearly marked with the work order number. Each shipment must be accompanied by a haul ticket.

Contractor's driver shall report to the State's representative at the time of arrival at the final delivery location and obtain a signature documenting the date and time.

Contractor must provide a conversion factor to convert hot mix from tons to cubic yards.

Each work order will specify a delivery site by the bid item in the contract and quantity to be supplied.

The minimum call out per work for delivered mix will be 20 tons.

Item 8011: Dense Graded Hot-Mix Asphalt (Small Quantity)(Materials Only)

Monitor the temperature of the material in the truck before shipping to ensure that it does not exceed 350°F and is not lower than 215°F at delivery. The Department will not pay for or allow placement of any mixture produced above 350°F.

No RAS will be accepted in the mix design for this contract. Use aggregate that meets the SAC requirement of Class A.

Binder substitution is limited to a reduction in one high temperature grade. This limitation does not apply to low temperature grade. Binder substitution is allowed when aged recycled binder is used.

Use field sand with a sand equivalent value of at least 35 when sampled and tested in accordance with TEX-203-F.

The Plant is the designated aggregate sampling location, unless otherwise approved by the Engineer.

Project Number: MMC 6453-15-001

Sheet

County: Morris

Control: 6453-15-001

Highway: US 259, etc.

For Hauling Operations:

- Supply tarp and all components necessary to tarp materials during transport.
- Document wait time, in excess of one hour, when required to remain at a TxDOT designated location until unloaded. Demurrage charges shall be invoiced in 15 minute increments.
- Make all deliveries between the hours of 8:00am and 4:00pm CST unless prior arrangements have been made with the Maintenance Supervisor.

ESTIMATE SUMMARY

ROADWAY		ALT	ITEM CODE			DESCRIPTION	UNIT	TOTAL	
			EST	FINAL	ITEM NO			DESC CODE	SP NO
			8011	6001		D-GR HMA (SQ) TY D PG 64-22 (PICKUP)	TON	750.000	
			8011	6002		D-GR HMA (SQ) TY D PG 64-22 (DELIVERY)	TON	250.000	
			8011	6003		D-GR HMA (SQ) TY D PG 70-22 (PICKUP)	TON	500.000	
			8011	6004		D-GR HMA (SQ) TY D PG 70-22 (DELIVERY)	TON	500.000	

ESTIMATE & QUANTITY SHEET

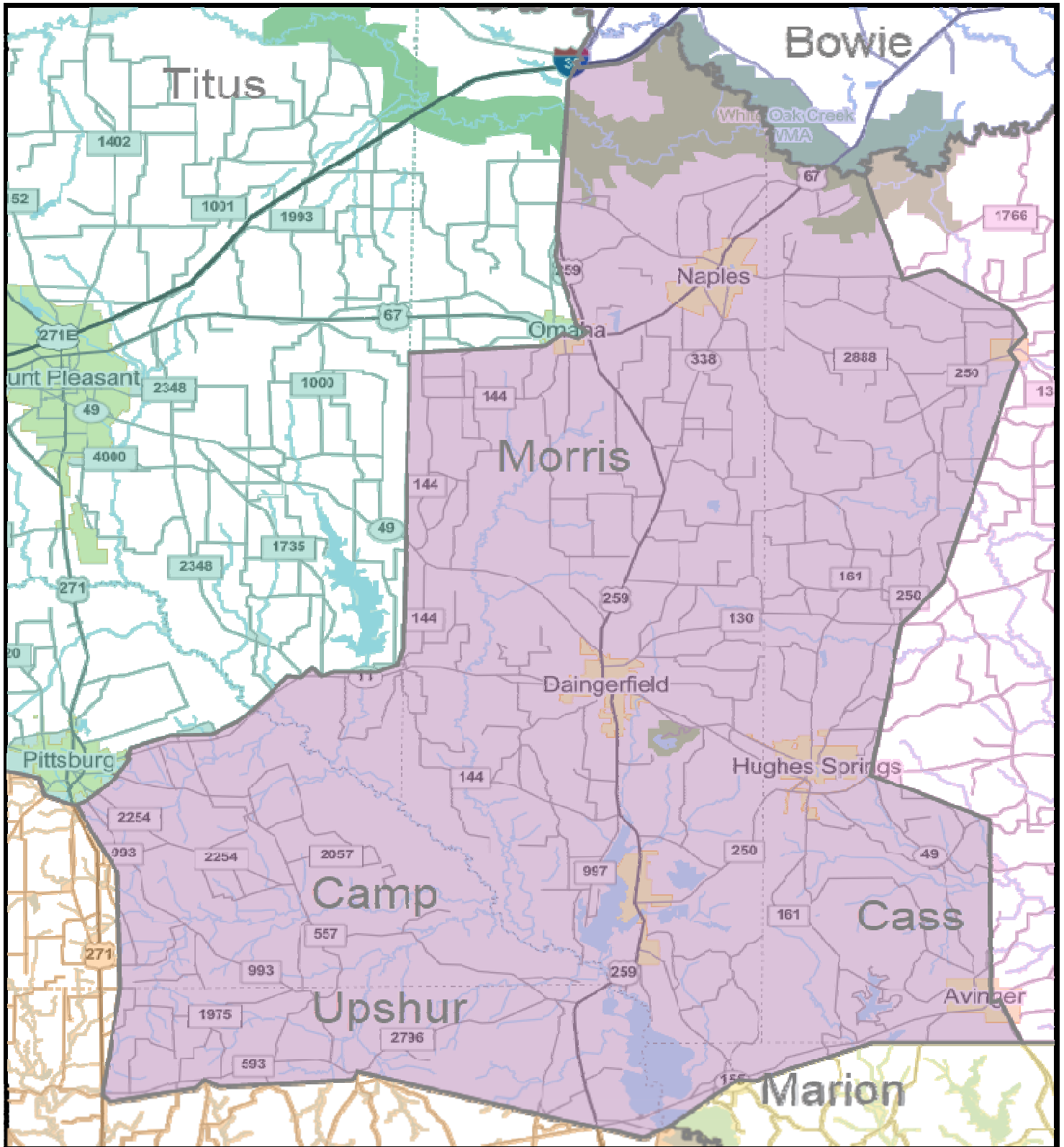
DISTRICT	COUNTY	HIGHWAY	PROJECT	SHEET NO
ATL	MORRIS, ETC.	US 259, ETC.	MMC 6453-15-001	3

ITEM		DESCRIPTION	QUANTITY	UNIT
8011	6001	D-GR HMA (SQ) TY D PG 64-22 (PICKUP)	750	TONS
8011	6002	D-GR HMA (SQ) TY D PG 64-22 (DELIVERY)	250	TONS
8011	6003	D-GR HMA (SQ) TY D PG 70-22 (PICKUP)	500	TONS
8011	6004	D-GR HMA (SQ) TY D PG 70-22 (DELIVERY)	500	TONS

QUANTITY SUMMARY

© 2022 by Texas Department of Transportation
All Rights Reserved

DISTRICT	COUNTY	HIGHWAY	PROJECT	SHEET NO
ATL	MORRIS, ETC.	US 259, ETC.	MMC 6453-15-001	4



MAP - DAINGERFIELD MAINTENANCE OFFICE

© 2022 by Texas Department of Transportation
All Rights Reserved

DISTRICT	COUNTY	HIGHWAY	PROJECT	SHEET NO
ATLANTA	MORRIS, ETC.	US 259, ETC.	MMC 6453-15-001	5