

SEE SHEET 2 FOR  
INDEX OF SHEETS

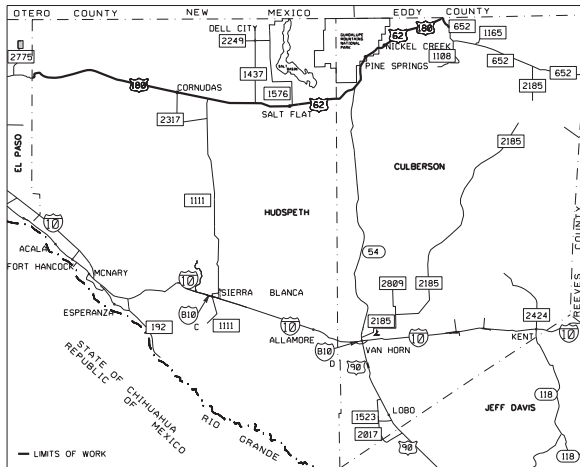
STATE OF TEXAS  
DEPARTMENT OF TRANSPORTATION  
PLANS OF PROPOSED  
HIGHWAY ROUTINE MAINTENANCE CONTRACT

STATE MAINTENANCE PROJECT NO.			
6446-16-001			
CONT	SECT	JOB	HOWEAY
6446	16	001	US 62/180
001	COUNTY		SHEET NO.
ELP	HUDSPETH, ETC.		1

TYPE OF WORK:  
PICNIC AREA MAINTENANCE  
(DELL CITY)

PROJECT NO.: RMC 6446-16-001  
EAST AREA OFFICE

HIGHWAY: US 62/180  
LIMITS OF WORK: VARIOUS



EXCEPTIONS: N/A  
EQUATIONS: N/A  
RAILROAD CROSSINGS: N/A



DocuSigned by:  
*Norma Duran*  
7/27/2023  
202307271644401  
SUPERVISOR/CONTRACT MANAGER

DocuSigned by:  
*Char Medel, PE.*  
7/27/2023  
202307271644401  
SUPERVISOR/CONTRACT MANAGER

SPECIFICATIONS ADOPTED BY THE TEXAS DEPARTMENT OF TRANSPORTATION,  
NOVEMBER 1, 2014 AND SPECIFICATION ITEMS INCLUDED IN THE CONTRACT  
SHALL GOVERN ON THIS PROJECT.

DATE: 7/26/2023 2:02:24 PM  
FILE: \\ELMANN\Contract\East Area Office\NSR-6446-16-001-Picnic Area Maintenance (Ball-Crown)\_DESIGN\Plan-545160-1111-C-SHEET.dwg

# INDEX OF SHEETS

**SHEET NO. DESCRIPTION**

<b>GENERAL</b>	
1	TITLE SHEET
2	INDEX OF SHEETS
3,3A-3B	GENERAL NOTES
4	ESTIMATE & QUANTITY
5	LOCATION TABLE
<b>TRAFFIC CONTROL PLAN</b>	
TRAFFIC CONTROL PLAN STANDARDS	
6	RS-TCP-05

DATE: 7/27/2023 10:07:49 AM  
FILE: T:\SEARCH\CONTRACTS\East Area DOT\open\MC 6446-16-001\open\MC 6446-16-001\open\MC 6446-16-001\open\DESIGN\Plan\_Saves\INDEX OF SHEETS.dwg



THE STANDARD SHEETS SPECIFICALLY IDENTIFIED ON THIS SHEET HAVE BEEN ISSUED BY ME AND ARE APPLICABLE TO THIS PROJECT.

DocuSigned by:  
*Martin J. Sotelo, P.E.* 1023  
JATE

GENERAL  
INDEX OF SHEETS

SHEET 1 OF

COUNTY	SECT	JOB	HIGHWAY
6446	16	001	US 62/180
DIST	COUNTY		SHEET NO.
ELP	HUDSPETH, ETC.		7

CONTROL: 6446-16-001

COUNTY: HUDSPETH, ETC.

HIGHWAY: US 62 /180

**GENERAL NOTES:**

**General Project Description** – This routine maintenance contract is for janitorial and grounds maintenance for picnic areas located in El Paso, Hudspeth, and Culberson counties on US 62/180.

The Contract will be managed by the **East Area Office** with participating Area Engineer (AE) and Maintenance Section Supervisor (MSS) listed below:

**Rene Romero, P.E., East AE**  
1430 Joe Battle Blvd.  
El Paso, Texas 79936  
(915) 757-5910

**Javier Castillo, Dell City/Pine Springs MSS**  
600 South Main  
Dell City, Texas 79837  
(915) 964-2345

Each Contract awarded by the Department stands on its own and as such, is separate from other contracts. A Contractor awarded multiple contracts, must be capable and sufficiently staffed to concurrently process all contracts at the same time.

**General Requirements**

Various bid items and their associated quantities have been provided within this Contract to establish unit bid prices for the proposed work. The bid items and quantities provided are based on historical data and are not guaranteed. Actual quantities of work to be performed and paid will be determined in the field by the Engineer and will be paid utilizing these unit bid prices with no further compensation made regardless of the final quantities.

The Department reserves the right to reduce or increase all quantities within guidelines provided in the Standard Specifications.

Provide vehicular and pedestrian access at all times, including Saturdays, Sundays, and holidays. This access includes, but is not limited to, driveways, streets, parking areas, and walkways. This will be considered subsidiary to the various bid items.

**ITEM 2 – INSTRUCTIONS TO BIDDERS**

This Contract includes plan sheets that are not part of the bid proposal.

View plans on-line or download from the web at:

<https://www.txdot.gov/business/letting-bids/plans-online.html>

Order plans from any of the plan reproduction companies shown on the web at:

[http://www.dot.state.tx.us/business/contractors\\_consultants/repro\\_companies.htm](http://www.dot.state.tx.us/business/contractors_consultants/repro_companies.htm)

Questions may be submitted via the Letting Pre-Bid Q&A web page. This webpage can be accessed from the Notice to Contractors dashboard located at the following Address:

<https://tableau.txdot.gov/views/ProjectInformationDashboard/NoticetoContractors>

CONTROL: 6446-16-001

SHEET 3

COUNTY: HUDSPETH, ETC.

HIGHWAY: US 62/180

All contractor questions will be reviewed by the Engineer. All questions and any corresponding responses that are generated will be posted through the same Letting Pre-Bid Q&A web page.

The Letting Pre-Bid Q&A web page for each project can be accessed by using the dashboard to navigate to the project you are interested in by scrolling or filtering the dashboard using the controls on the left. Hover over the blue hyperlink for the project you want to view the Q&A for and click on the link in the window that pops up.

Request a proposal electronically from the Department's website:

<http://www.txdot.gov/business-ca/pr.htm>

Or use the electronic bidding site:

<http://www.txdot.gov/business/letting-bids/ebs.html>

A bid summation will be available on-line at:

<http://www.txdot.gov/business/bt.html>

**ITEM 3 – AWARD AND EXECUTION**

The Contract duration is for 12 months. Time charges and work will start on the day stated on the Work Authorization letter. The Contract will be in effect until the work on the last callout is completed.

**ITEM 7 – LEGAL RELATIONS AND RESPONSIBILITIES**

No significant traffic generator events identified.

Abide by Section 7.2.5. Use of Blue Warning Lights related to vehicle lighting. Vehicles equipped with unauthorized lighting will not be permitted to operate on Department highways.

Do not discharge any liquid pollutant from vehicles onto the roadside. Immediately clean spills and dispose in compliance with local, state, and federal regulations to the satisfaction of the Engineer at no additional cost to the Department.

Occupational Safety & Health Administration (OSHA) regulations prohibit operations that bring people or equipment within 10 ft. of an energized electrical line. Where workers and/or equipment may be close to an energized electrical line, notify the electrical power company and make all necessary adjustments to ensure the safety of workers near the energized line.

**CONTROL: 6446-16-001**

**COUNTY: HUDSPETH, ETC.**

**HIGHWAY: US 62 /180**

**ITEM 8 – PROSECUTION AND PROGRESS**

This project to be completed in **365** calendar days in accordance with **Section 8.3.1.5, "Calendar Day."**

The Contractor must provide enough manpower and equipment to accomplish the required work under this contract during the hours agreed upon by the Contractor and Engineer. Failure to do so will constitute grounds for a Noncompliance Penalty.

Work must be performed within 72 hours of notification from the Engineer.

A Noncompliance Penalty will be assessed for each instance the Contractor is in noncompliance. A noncompliance instance is defined by any of the following:

1. Contractor fails to begin work at the specified time or location(s);
2. Contractor fails to complete work by the time agreed upon with the Engineer;
3. Contractor does not have all the necessary resources (i.e. personnel, equipment, and material) to fulfill the requirement of the Item(s) called out at the specified time or location(s).

The Noncompliance Penalty will be deducted from any money due or to become due for any completed Item(s) or work. The Noncompliance Penalty will be assessed as follows: \$500 per instance, per location.

**ITEM 502 – BARRICADES, SIGNS AND TRAFFIC HANDLING**

The Contractor and his employees will wear fluorescent orange safety vests, safety shoes/boots, eye protection and hard hats while outside vehicles within the Department's right of way and will comply with Item 7.2.4. Public Safety and Convenience, and Item 7.2.6. Barricades, Signs, and Traffic Handling.

The Contractor must have enough manpower and equipment to perform any revised traffic control as directed by the Engineer.

Contractor assumes the responsibility for any additional barricade signs and devices of any approved contractor initiated changes to the sequence of work or Traffic Control Plans.

Some signs, barricades, and channelization devices may not be shown at the precise or measured position. Place the barricades, devices, or signs, with approval, in positions to meet field conditions.

Remove signs that do not apply to current conditions at the end of each day's work (do not lay down signs within clear zone).

In accordance with Section 7.2.6.1 of the 2014 Texas Department of Transportation Standard Specifications for Construction and Maintenance of Highways, Streets and Bridges, the Contractor will designate, in writing, a Contractor Responsible Person (CRP) and a CRP alternate to take full responsibility for the set-up, maintenance, and necessary corrective

**CONTROL: 6446-16-001**

**SHEET 3A**

**COUNTY: HUDSPETH, ETC.**

**HIGHWAY: US 62/180**

measures of the traffic control plan. The CRP or CRP alternate must be present at site and implement the initial set up of every traffic control phase/stage, at each location, and/or each call out, for the entire duration of the project.

At the written request of the Engineer, immediately remove the CRP or CRP alternate from the project if, in the opinion of the Engineer, is not competent, not present at initial TCP set-ups, or does not perform in a proper, skillful, or safe manner. These individuals shall not be reinstated without written consent of the Engineer.

CRP and CRP alternate must be trained using Department approved training. Provide a copy of the certificate of completion to the Engineer for project records. Refer to Table 1 for Department approved Training.

**Table 1: Contractor Responsible Person and Alternate**

Provider	Course Number	Course Title	Duration	Notes
American Traffic Safety Services Association	TCS	Traffic Control Supervisor	2 Days	
National Highway Institute	133112	1. Design and Operation of Work Zone Traffic Control 2. Work Zone Traffic Control for Maintenance Operations	1 Day	Both classes are required to meet minimum required training.
	133113		1 Day	
National Highway Institute	133112A	Design and Operation of Work Zone Traffic Control	3 Days	
Texas Engineering Extension Service	HWS410	Contractor's Responsible Person for Temporary Traffic Control	16 Hours	Please note the name has changed.
University of Texas Arlington Division for Enterprise Development	WKZ421	Traffic Control Supervisor	16 Hours	Contact UTA for training needs.

All contractor workers involved with the traffic control implementation and maintenance must participate and complete a Department approved training course. Provide a copy of the certificate of completion to the Engineer for project records. Refer to Table 2 for Department approved Training.

**CONTROL: 6446-16-001****COUNTY: HUDSPETH, ETC.****HIGHWAY: US 62 /180****CONTROL: 6446-16-001****SHEET 3B****COUNTY: HUDSPETH, ETC.****HIGHWAY: US 62/180****Table 2: Other Work Zone Personnel**

Provider	Course Number	Course Title	Duration	Notes
American Traffic Safety Services Association	TCT	Traffic Control Technician	1 Day	
Texas Engineering Extension Service	HWS002	Work Zone Traffic Control	16 Hours	Identical to HWS-410. Counts for 3 year CRP requirement.
National Highway Institute	133116	Maintenance of Traffic for Technicians	5 Hours	Web based
National Highway Institute	134109-I	Maintenance Training Series: Basics of Work Zone Traffic Control	1 Hour	Free, Web Based
University of Texas at Arlington, Division for Enterprise Development	WKZ 100	Work Zone Safety: Temporary Traffic Control	4 Hour	Please note the name has changed. Free Web based.
TxDOT/AGC Joint Development	N/A N/A	Safe Workers Awareness Highway Construction Work Zone Hazards	16 Minutes 18 Minutes	Videos available through the AGC of Texas Offices. English and Spanish.
AGC America	N/A	Highway Work Zone Safety Training	1 Day	
Texas Engineering Extension Service	HWS400	Temporary Traffic Control Worker	4 Hour	Contact TEEX if interested in class.
TxDOT/AGC Joint Development	N/A	Work Zone Fundamentals	10 Minutes Approx.	Videos available through the AGC of Texas Offices. English and Spanish.

Contractor may choose to train workers involved with the traffic control implementation and maintenance with a contractor developed training in lieu of Department approved training. Contractor-developed training must be equivalent to the Department approved training shown in Table 2. Provide the Engineer a copy of the course curriculum for pre-approval, prior to conducting the contractor developed training. Provide the Engineer a copy of the log of attendees after training completion for project records.

**Safety Contingency**

The contractor Force Account "Safety Contingency" that has been established for this project is intended to be utilized for work zone enhancement, to improve the effectiveness of the TCP that could not be foreseen in the project planning and design stage. These enhancements will be mutually agreed upon by the Engineer and the Contractor's Responsible Person based on weekly or more frequent traffic management reviews on the project. The Engineer may choose to use existing bid items if it does not slow the implementation of enhancement.

**ITEM 745 – PICNIC AREA MAINTENANCE**

Refer to "Locations Table" sheet, for picnic area locations.

All picnic areas within the limits of the work will be kept in a clean and orderly manner. Maintenance activities include a thorough cleaning of all picnic benches and surrounding area, plant watering, and general maintenance of the facilities.

Perform 3 cycles per week of Picnic Area Maintenance (Janitorial Service) for 52 weeks. Each cycle consists of the performance of picnic area maintenance at all locations shown on the "Locations Table" sheet or as directed by the Engineer.

A sign-in ledger will be required for certification purposes of the Contractor's work schedule. The Contractor will sign in and out each working day and provide this information to the Department at a minimum of a weekly basis for payment certification.

Remove all trash including the replacement of the bags as directed by the Engineer.

Supply liners (trash bags) as specified below:

Type B-Clear (38"x65") 55 gallon capacity (LDPE Thickness 4.0 mils) Low Density and Linear Low Density Polyethylene Cylindrical Bags.

Large volumes of trash or hazardous material classified by the Engineer to be caused by illegal dumping will be disposed of by the Department. In these cases, the Contractor will notify the Engineer or his representative for proper removal and disposal.

The contractor will be responsible for locating a legal landfill and the fees required to dump the litter in the landfill.

Remove weeds, grass, and other undesirable growth from picnic areas as directed. Gravel area will be kept free of any growth from weeds or grass. Mow 10 feet out from sidewalks and curbs beginning from off ramps to on ramps and 10 feet from graveled picnic area. All islands and medians within picnic area boundaries are to be mowed completely. This will be subsidiary to Item 745.

Prune dead and undesirable growth from tree and shrubs as needed or as directed. The Contractor will water the grass, trees and shrubs three (3) times per week during the early morning hours or as directed by the Engineer. The amount of water to be used will be determined by the Engineer.

Mowing and trimming will be performed at 1 time per month for a total of 12 cycles or as directed by the engineer. Each cycle consists of the performance of grounds maintenance services at all 5 locations shown on the "Locations Table" sheet or as directed by the Engineer.



# Estimate & Quantity Sheet

**CONTROLLING PROJECT ID** 6446-16-001

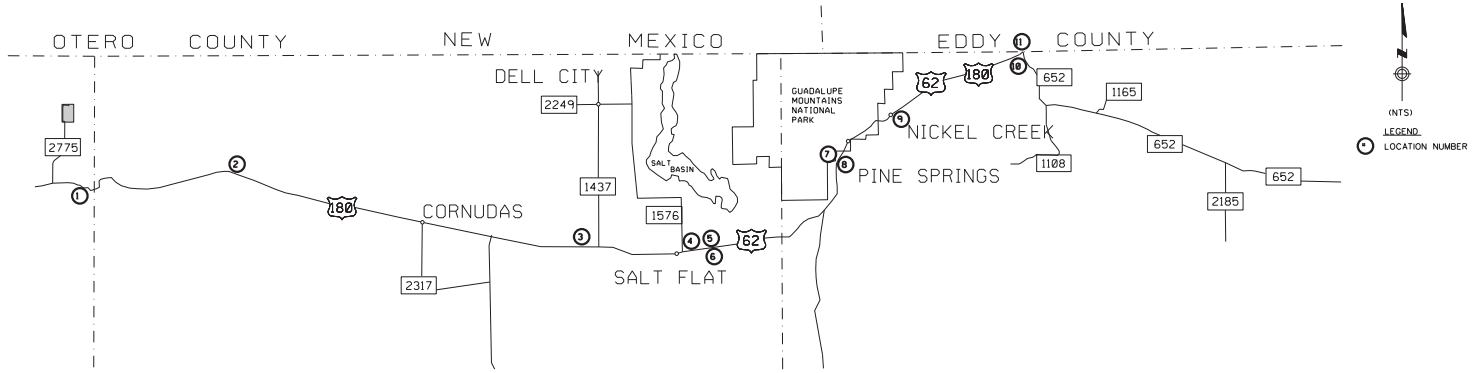
**DISTRICT** El Paso  
**HIGHWAY** US0062

**COUNTY** Hudspeth

CONTROL SECTION JOB				6446-16-001		TOTAL EST.	TOTAL FINAL
PROJECT ID				A00198281			
COUNTY				Hudspeth			
HIGHWAY				US0062			
ALT	BID CODE	DESCRIPTION	UNIT	EST.	FINAL		
	745-6061	GROUNDS MAINT (MOWING / TRIMMING)	CYC	12.000		12.000	
	745-6154	JANITORIAL MAINT (PICNIC AREAS)	CYC	156.000		156.000	

DISTRICT	COUNTY	CCSJ	SHEET
El Paso	Hudspeth	6446-16-001	4

DATE: 7/02/2023 2:32:08 PM  
 FILE: T:\SEPM\N\Construction\East Area\_DIT\sp\NHC\_6446-16-001 Picnic Areas Maintenance\_Dell\_City\_1 - DESIGN\Plan\_Series\LOCATIONS\_TABLE.dwg



PICNIC AREA LOCATIONS					
LOCATION NUMBER	COUNTY	HIGHWAY	APPROX. MILE MARKER	LOCATION DESCRIPTION	DAILY WORK HOURS
1	EL PASO *	US 62/180	50	WESTBOUND NEAR EL PASO/HUDSPETH COUNTY LINE	7:00 AM TO 3:00 PM
2	HUDSPETH *	US 62/180	63	WESTBOUND AT CORNUDAS, 40 MILES FROM HILL PARK	7:00 AM TO 3:00 PM
3	HUDSPETH	US 62/180	105.6	OLD GREYHOUND STATION/SALT FLAT CAFE	7:00 AM TO 3:00 PM
4	HUDSPETH	US 62/180	107	WESTBOUND AT SALT FLAT, 11.9 MILES SOUTH OF DELL CITY	7:00 AM TO 3:00 PM
5	HUDSPETH	US 62/180	109.4	LITTER BARREL WESTBOUND	7:00 AM TO 3:00 PM
6	HUDSPETH	US 62/180	110.4	LITTER BARREL EASTBOUND	7:00 AM TO 3:00 PM
7	CULBERSON *	US 62/180	125	WESTBOUND AT GUADALUPE MNTS., 4 MILES WEST OF PINE SPRINGS AND 29	7:00 AM TO 3:00 PM
8	CULBERSON *	US 62/180	125	EASTBOUND AT GUADALUPE MNTS., 4 MILES WEST OF PINE SPRINGS AND 29	7:00 AM TO 3:00 PM
9	CULBERSON *	US 62/180	128	WESTBOUND AT 1.5 MILES FROM PINE SPRINGS	7:00 AM TO 3:00 PM
10	CULBERSON	US 62/180	148.7	EASTBOUND TEXAS/NEW MEXICO STATE LINE	7:00 AM TO 3:00 PM
11	CULBERSON	US 62/180	149.7	WESTBOUND TEXAS/NEW MEXICO STATE LINE	7:00 AM TO 3:00 PM

\* LOCATION REQUIRES MOWING AS PER ITEM 745-6061, "GROUNDS MAINT (MOWING/TRIMMING)".

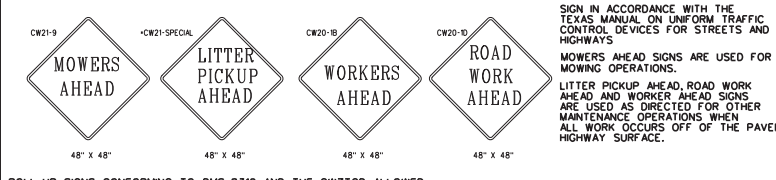
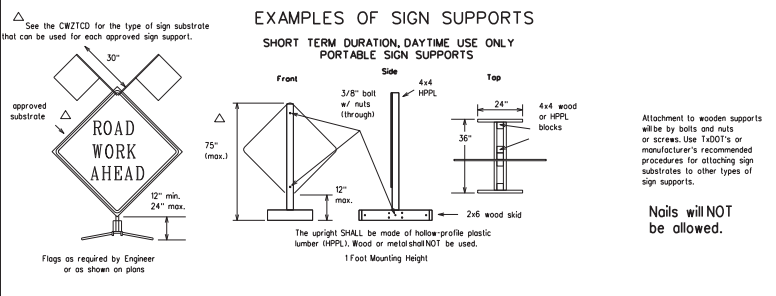
**PICNIC AREAS**  
 GENERAL  
 LOCATIONS TABLE

SHEET 1 OF 1

Texas Department of Transportation			
CONTRACT NO.	SECTION	JOB	HIGHWAY
6446	16	001	US 62/180
DIST	COUNTY	SHEET NO.	
ELP	HUDSPETH, ETC.	5	

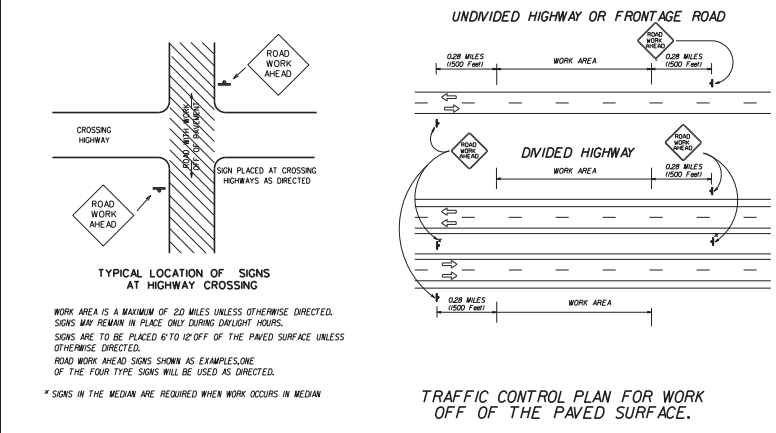
DISCLAIMER  
 The use of this standard is governed by the "Texas Engineering Practice Act". No warranty of any kind is made by TxDOT for any purpose whatsoever. TxDOT assumes no responsibility for the conversion of this standard to other formats or for incorrect results or damages resulting from its use.

1	2	3	4	5	6	7	8	9	10	11	12	13	14	15	16
17	18	19	20	21	22	23	24	25	26	27	28	29	30	31	32
33	34	35	36	37	38	39	40	41	42	43	44	45	46	47	48
49	50	51	52	53	54	55	56	57	58	59	60	61	62	63	64



ROLL-UP SIGNS CONFORMING TO DMS-8310 AND THE CWZTCO ALLOWED

\*Letter dimensions and spacing for "CW21-SPECIAL" is the same as C20-10



- #### GENERAL NOTES FOR WORK ZONE SIGNS
- Contractor shall install and maintain signs in a straight and plumb condition and/or as directed by the Engineer.
  - Wooden sign posts shall be painted white.
  - Barricades shall NOT be used as sign supports.
  - Nails shall NOT be used to attach signs to any support.
  - Signs shall be installed in accordance with the plans or as directed by the Engineer. Signs shall be used to regulate, warn, and guide the traveling public safely through the work zone.
  - The Contractor may furnish either the sign design shown in the plans or in the "Standard Highway Sign Designs for Texas" (SHSD). The Engineer/Inspector may require the Contractor to furnish other work zone signs that are shown in the TMUTCD but may have been omitted from the plans. Any variation in the plans shall be documented by written agreement between the Engineer and the Contractor's Responsible Person. All changes must be documented in writing before being implemented. This can include documenting the changes in the Inspector's TxDOT diary and having both the Inspector and Contractor initial and date the agreed-upon changes. The additional signs requested by the Engineer/Inspector shall not be subsidiary.
  - The Contractor shall furnish sign supports listed in the "Compliant Work Zone Traffic Control Devices List" (CWZTCO). The Contractor shall install the sign support in accordance with the manufacturer's recommendations. If there is a question regarding installation procedures, the Contractor shall furnish the Engineer a copy of the manufacturer's installation recommendations so that the Engineer can verify the correct procedures are being followed.
  - The Contractor is responsible for sign installations and replacing signs with damaged or cracked substrates and/or damaged or marred reflective sheeting as directed by the Engineer/Inspector.
  - Identification markings may be shown only on the back of the sign substrate. The maximum height of letters and/or company logos used for identification shall be 1".
  - The Contractor shall replace damaged wood posts. New or damaged wood sign posts shall not be spliced.
- Duration of Work (as defined by the "Texas Manual on Uniform Traffic Control Devices" Part VII)
- The Contractor is responsible for ensuring the sign support and substrate meets crashworthiness. For mowing operation signs and supports are Short-Term. Duration for daytime work.
2. The Contractor shall furnish the sign sizes shown on this sheet as directed by the Engineer.

- #### SIGN SUBSTRATES
- The Contractor shall ensure that the sign substrate is allowed for the type of sign support that is being used. The CWZTCO lists each substrate that can be used on the different types and models of sign supports.
  - "Mesh" type materials are NOT an approved sign substrate.
  - All wooden individual sign panels fabricated from 2 or more pieces shall have one or more plywood cleat, 1/2" thick by 6" wide, fastened to the back of the sign and extending fully across the sign. The cleat shall be attached to the back of the sign using wood screws that do not penetrate the face of the sign panel. The screws shall be placed on both sides of the splice and spaced at 6" centers. The Engineer may approve other methods of splicing the sign faces.
- #### REFLECTIVE SHEETING
- ReflectORIZED signs shall be constructed of sheeting meeting the color and retro-reflectivity requirements of DMS-8300 or DMS-8310. The DMS specifications can be accessed from the following web address: <http://manuals.dot.state.tx.us/8300/8300ebs/8300ebs.htm>. CollectionView.aspx?defaults=defaults
  - White sheeting, meeting the requirements of DMS-8300 Type C (High Specific Intensity), shall be used for signs with white background and channelizing devices.
  - Orange sheeting, meeting the requirements of DMS-8300 Type C (Fluorescent Prismatic), shall be used for signs with orange backgrounds.
- #### SIGN LETTERS
- All sign letters and numbers shall be clear, and open rounded type uppercase alpha/beta letters as approved by the Federal Highway Administration (FHWA) and as published in the "Standard Highway Sign Design for Texas" manual. Signs, letters and numbers shall be of first class workmanship in accordance with Department Standards and Specifications.

- #### REMOVING OR COVERING
- Signs should be removed or completely covered when not in use.
  - Duct tape or other adhesive material shall NOT be affixed to a sign face.
  - Signs and supports shall be removed by the end of the day.
- #### SIGN SUPPORT WEIGHTS
- Where sign supports require the use of weights to keep from turning over, the use of sandbags with dry cohesionless sand is recommended.
  - The sandbags will be tied shut to keep the sand from spilling and to maintain a constant weight.
  - Rock, concrete, iron, steel or other solid objects without be permitted for use as sign support weights.
  - Sandbags should weigh a minimum of 35 lbs and a maximum of 50 lbs.
  - Sandbags should be made of a durable material that tears upon vehicular impact.
  - Rubber ballasts (such as those used with cones or edgeline chemonizers) shall NOT be used as sign support weights.
  - Sandbags shall only be placed along or laid over the base supports of the traffic control device and shall not be suspended above ground level or hung with rope, wire, chains or other fasteners. Sandbags shall be placed along the length of the skirts to weigh down the sign supports.
  - Sandbags shall NOT be placed under the skirt and shall not be used to level sign supports placed on slopes.

#### CONTRACTOR REQUIREMENTS FOR MAINTAINING PERMANENT SIGNS WITHIN THE PROJECT LIMITS

Any sign, sign support or traffic control device that is struck or damaged by the Contractor or his/her construction equipment shall be replaced or repaired as soon as possible by the Contractor at the Contractor's expense.

Only pre-qualified products shall be used. A copy of the "Compliant Work Zone Traffic Control Devices List" (CWZTCO) describes pre-qualified products and their sources and may be obtained by contacting:

Standards Engineer  
Traffic Operations Division - TE  
Texas Department of Transportation  
125 East 11th Street  
Austin, Texas 78701-2483  
Phone (512) 416-3120  
Fax (512) 416-3299

Instructions to locate the "CWZTCO" on TxDOT website are:  
Start at website - [www.dot.state.tx.us](http://www.dot.state.tx.us)  
Click on "About TxDOT".  
Click on "Organizational Chart".  
Click on Traffic Operations Div.  
Click on "Compliant Work Zone Traffic Control Devices".  
Click on "View PDF".  
This site is printable.

Texas Department of Transportation  
Maintenance Division  
Standard Plans

ROADSIDE  
TRAFFIC CONTROL PLAN

SHEET 1 OF 1      RS-TCP-05      NOT TO SCALE

FILE: RSTCP05.DGN	DATE: 1/8	BY: JG	CHK: [ ]	APP: [ ]	DATE: 1/8/2005	SHEET: [ ]
PROJECT: FEBRUARY 2005	ELP	N/A	N/A	N/A	N/A	5
REVISED: FEBRUARY 2, 2005	BY: [ ]	CHK: [ ]	APP: [ ]	DATE: [ ]	BY: [ ]	NO. [ ]
REVISED: [ ]	BY: [ ]	CHK: [ ]	APP: [ ]	DATE: [ ]	BY: [ ]	NO. [ ]