

**NOT TO SCALE**

**STATE OF TEXAS**  
**DEPARTMENT OF TRANSPORTATION**  


---

**PLANS OF PROPOSED**  
**HIGHWAY ROUTINE MAINTENANCE CONTRACT**

GRAPHICS FILE	MAINTENANCE PROJECT NO.		SHEET NO.
	RMC - 643972001		1
CHECKED	STATE	STATE DIST.	COUNTY
	TEXAS	23	LAMPASAS
CHECKED	CONT.	SECT.	JOB
	6439	72	001
			HIGHWAY NO.
			US0190

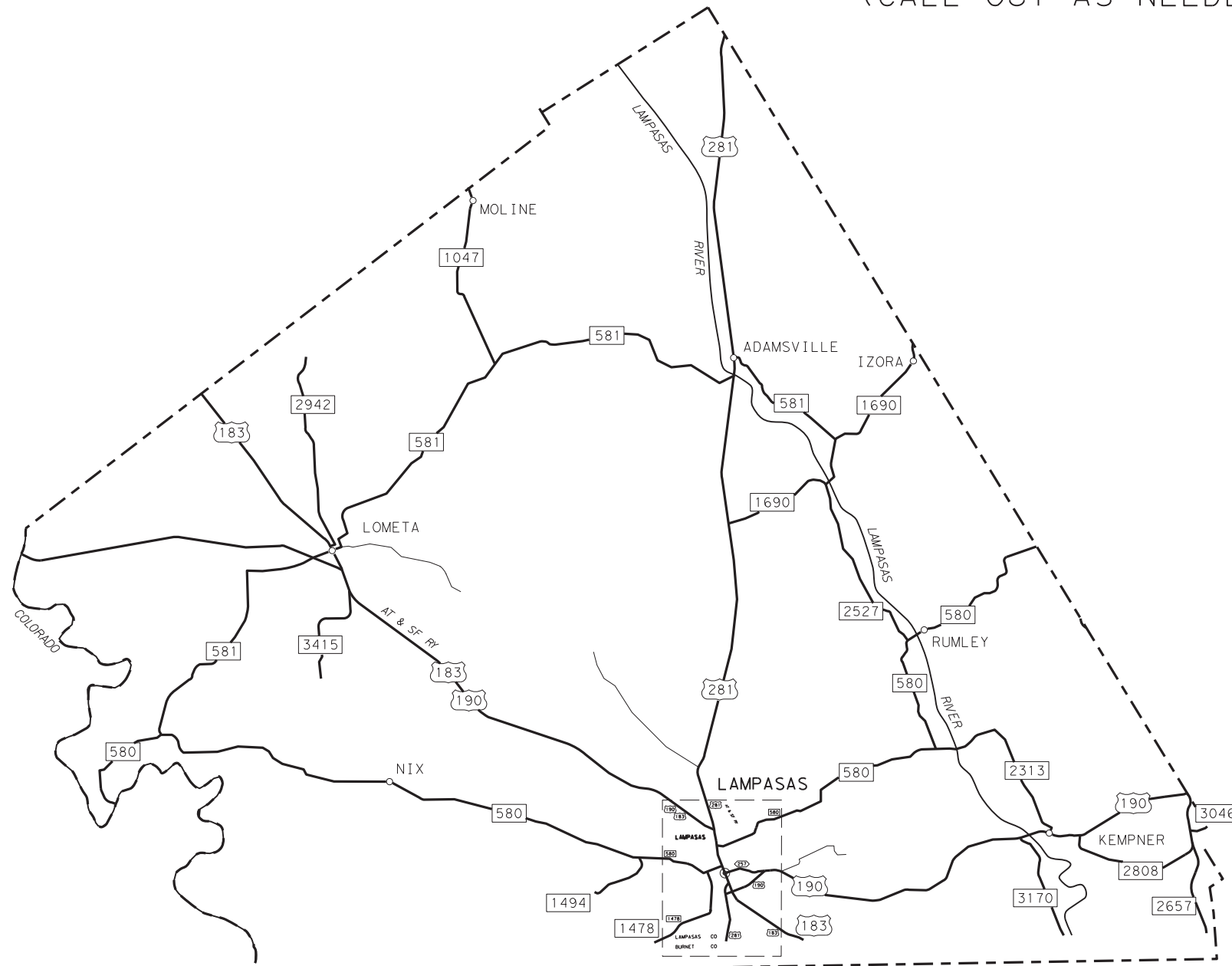
AREA OF DISTURBED SOIL = 0 ACRES

EXCEPTIONS: NONE  
 EQUATIONS: NONE  
 RAILROAD: NONE

**TYPE OF WORK:**  
 ROADSIDE MOWING  
 (NON-SITE-SPECIFIC)  
 (CALL-OUT AS NEEDED)

**INDEX OF SHEETS**

<u>SHEET NO.</u>	<u>DESCRIPTION</u>
<b>GENERAL</b>	
1	TITLE SHEET
2	GENERAL NOTES
3	ESTIMATE & QUANTITY SHEET
4	SUMMARY OF LOCATIONS
5	STRIP-MOW-D-04
6	STRIP-MOW-ND-04
<b>TRAFFIC CONTROL STANDARDS</b>	
7	RS-TCP-05



TEXAS DEPARTMENT OF TRANSPORTATION  
 RECOMMENDED FOR LETTING

DocuSigned by:  
*Blake Stemberge* 3/10/2023  
AZE1607EC542461...

MAINTENANCE ENGINEER

Project Number: RMC - 643972001

County: LAMPASAS

Control: 6439-72-001

Highway: US0190

**GENERAL NOTES:**

- ITEM 730 will be performed on a CALLOUT BASIS at locations identified by each CALLOUT/WORK ORDER.
- This is a CALLOUT CONTRACT. Plan Quantity Measurement does not apply.
- This is a Non-Site-Specific Contract. The LOCATIONS (ROADWAYS) shown on the SUMMARY OF LOCATIONS in the Plans are for Contractor's information only.
- QUANTITIES, ROADWAYS and # OF PASSES to be mowed will be identified by each WORK ORDER.

**ITEM 2 INSTRUCTIONS TO BIDDERS**

Contractor questions on this project are to be addressed to the following individual(s):

Name	Email Address
Blake Stembridge, P.E.	<a href="mailto:blake.stembridge@txdot.gov">blake.stembridge@txdot.gov</a>

Questions may be submitted via the Letting Pre-Bid Q&A webpage. This webpage can be accessed from the Notice to Contractors dashboard located at the following address:

<https://tableau.txdot.gov/views/ProjectInformationDashboard/NoticetoContractors>

All contractor questions will be reviewed by the Engineer. All questions and any corresponding responses that are generated will be posted through the same Letting Pre-Bid Q&A webpage.

The Letting Pre-Bid Q&A webpage for each project can be accessed by using the dashboard to navigate to the project you are interested in by scrolling or filtering the dashboard using the controls on the left. Hoover over the blue hyperlink for the project you want to view the Q&A for and click on the link in the window that pops up.

**ITEM 7 LEGAL RELATIONS AND RESPONSIBILITIES:**

No significant traffic generator events identified.

Project Number: RMC - 643972001

County: LAMPASAS

Control: 6439-72-001

Highway: US0190

**ITEM 502 BARRICADES, SIGNS AND TRAFFIC HANDLING:**

Perform all traffic control according to the Texas Manual on Uniform Traffic Control Devices for Streets and Highways and plan sheet RS-TCP-05.

**ITEM 730 ROADSIDE MOWING**

Report to the Project Manager prior to beginning work each day.

Keep equipment MORE THAN 30ft. from the edge of the pavement or travel lane during non-working hours.

**WORKING DAYS:** The Engineer will calculate and specify the number of working days granted for each WORK ORDER using a production rate of 125 acres each working day.

Set mower cutting height at 7in. Hand trim to a height of approximately 4in.

Hand trim around all dead animals or other large debris that cannot be mowed over or moved in the same manner as any other fixed object. It is also acceptable to move the object to the right of way line prior to mowing.

**Strip Mowing:**

- Mowing width of 15ft. - 1 pass with a 15ft. mower and is actually measured and paid as 14ft.
- Mowing width of 30ft. - 2 passes with a 15ft. mower and is actually measured and paid as 28ft.
- Mowing width of 45ft. - 3 passes with a 15ft. mower and is actually measured and paid as 42ft.
- Trim around signs and driveways beyond the 15ft., 30ft. or 45ft. Strip Mow width.
- Trim around curbs and sidewalks in the city sections.
- All areas not CALLED OUT by WORK ORDER become non-mow areas.
- In reference to plan sheet **STRIP-MOW-ND-04**, note number 2 is not required unless CALLED OUT by WORK ORDER.

# Estimate Sheet

ESTIMATE SUMMARY															
EST	FINAL	EST	FINAL	EST	FINAL	CONTROL 6439-72-001 US0190 ROADSIDE MOWING		A L T	ITEM CODE			DESCRIPTION	UNIT	TOTAL	
						EST	FINAL		ITEM CODE	DESC CODE	SP NO			EST	FINAL
						8216.850			730	6001		STRIP MOWING	AC	8216.850	

### ESTIMATE & QUANTITY SHEET

DIST	COUNTY	CCSJ	SHEET
23	LAMPASAS	6439-72-001	3



GRAPHICS FILE		MAINTENANCE PROJECT NO.		SHEET NO.
		RMC - 643972001		4
CHECKED	STATE	STATE DIST.	COUNTY	
	TEXAS	23	LAMPASAS	
CHECKED	CONT.	SECT.	JOB	HIGHWAY NO.
	6439	72	001	US0190

SUMMARY OF LOCATIONS

**GENERAL NOTES:**  
 ITEM 730 will be performed on a **CALLOUT BASIS** at locations identified by each **CALLOUT/WORK ORDER**.  
 This is a **CALLOUT CONTRACT**. Plan Quantity Measurement does not apply.  
 This is a **Non-Site-Specific Contract**. The **LOCATIONS (ROADWAYS)** shown here are for **INFORMATION ONLY**.  
**ESTIMATED QUANTITIES** shown here are for **INFORMATION ONLY**.  
**QUANTITIES, ROADWAYS and # OF PASSES** will be identified by each **WORK ORDER**.

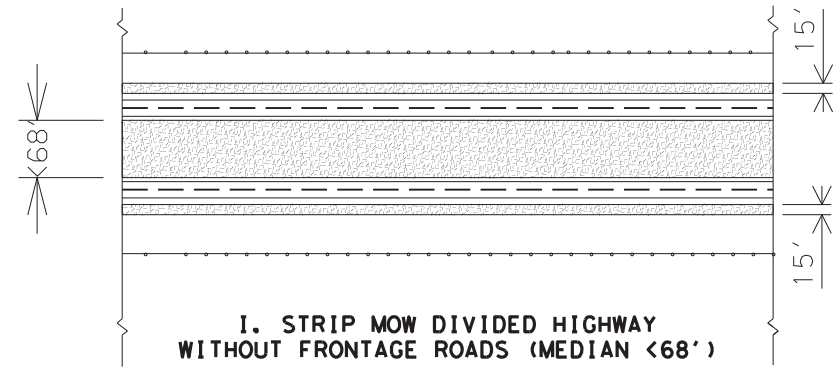
HIGHWAY	LIMITS		REFERENCE MARKER		LENGTH IN MILES	STRIP MOWING - 1 PASS			STRIP MOWING - 2 PASSES			STRIP MOWING - 3 PASSES		
	FROM	TO	FROM	TO		# OF MOWINGS	ACRES 1 PASS	ACRES TOTAL	# OF MOWINGS	ACRES 2 PASSES	ACRES TOTAL	# OF MOWINGS	ACRES 3 PASSES	ACRES TOTAL
US 183	Mills County Line	FM 3415	424	432	8.02	1	45.27	45.27	2	66.89	133.78	2	83.69	167.38
US 183	FM 3415	US 281	432	448	14.04	1	66.05	66.05	2	121.18	242.36	2	161.24	322.48
US 183	US 190	Burnet County Line	448	451	2.77	1	13.54	13.54	2	20.78	41.56	2	23.97	47.94
US 190	San Saba County Line	US 183	508	518	10.68	1	53.87	53.87	2	91.23	182.46	2	113.04	226.08
US 190	US 281	Coryell County Line	536	552	16.47	1	80.53	80.53	2	125.87	251.74	2	154.62	309.24
US 281	Coryell County Line	N. City Limits of Adamsville	386	396	9.83	1	38.65	38.65	2	76.77	153.54	2	99.09	198.18
US 281	N. City Limits of Adamsville	FM 580	396	412	16.58	1	85.99	85.99	2	146.38	292.76	2	185.30	370.60
US 281	9th Street in the City	Burnet County Line	414	416	1.81	1	9.09	9.09	2	12.65	25.30	2	12.65	25.30
FM 580	San Saba County Line	Porter Street in the City	496	518+1040	22.41	2	97.13	194.26	2	157.38	314.76	1	162.11	162.11
FM 580	E. City Limits of Lampasas	Coryell County Line	520	540	16.46	2	71.36	142.72	2	111.97	223.94	1	176.20	176.20
FM 581	FM 580	US 190	508	518	9.89	2	38.57	77.14	2	64.17	128.34	1	88.52	88.52
FM 581	US 190	US 281	518	536	22.39	2	84.99	169.98	2	111.06	222.12	1	135.56	135.56
FM 581	US 281	FM 1690	536	541	4.55	2	20.97	41.94	2	39.03	78.06	1	56.50	56.50
FM 1047	Mills County Line	FM 581	366	373	6.03	2	20.95	41.90	2	39.02	78.04	1	79.81	79.81
FM 1478	Sixth Street in town	Burnet County Line	386	390	3.70	2	13.17	26.34	2	18.68	37.36	1	40.62	40.62
FM 1478	Burnet County Line	End of Pavement	390	397	8.64	2	31.32	62.64	2	60.64	121.28	1	89.97	89.97
FM 1494	FM 580	End of State Maintenance	504	507	1.99	2	8.25	16.50	2	10.67	21.34	1	10.67	10.67
FM 1690	Coryell County Line	US 281	372	382	9.56	2	37.45	74.90	2	64.89	129.78	1	66.15	66.15
FM 1715	FM 580	US 190	512	518	6.35	2	22.00	44.00	2	40.00	80.00	1	66.00	66.00
FM 2313	FM 580	US 190	382	386	6.01	2	20.42	40.84	2	33.11	66.22	1	33.11	33.11
FM 2527	FM 580	FM 1690	372	378	5.86	2	21.70	43.40	2	42.08	84.16	1	44.01	44.01
FM 2657	US 190	Burnet County Line	384	390	4.57	2	27.06	54.12	2	39.21	78.42	1	46.53	46.53
FM 2808	US 190	FM 2657	520	525	4.45	2	17.50	35.00	2	17.50	35.00	1	17.50	17.50
FM 2942	US 183	End of State Maintenance	368	375	6.39	2	23.18	46.36	2	45.22	90.44	1	64.82	64.82
FM 3046	FM 2657	Coryell County Line	384	385	0.56	2	1.90	3.80	2	3.80	7.60	1	4.89	4.89
FM 3170	US 190	End of State Maintenance	384	388	3.53	2	13.62	27.24	2	26.49	52.98	1	38.35	38.35
FM 3415	US 183	End of Pavement	376	380	3.75	2	13.29	26.58	2	27.08	54.16	1	38.18	38.18
<b>TOTAL</b>					<b>227.29</b>		<b>977.82</b>	<b>1562.65</b>		<b>1613.75</b>	<b>3227.50</b>		<b>2093.10</b>	<b>2926.70</b>

SUMMARY:	AC
Strip Mowing - 1 pass	1,562.65
Strip Mowing - 2 passes	3,227.50
Strip Mowing - 3 passes	2,926.70
Strip Mowing at UNDETERMINED LOCATIONS	500.00
<b>TOTAL</b>	<b>8,216.85</b>

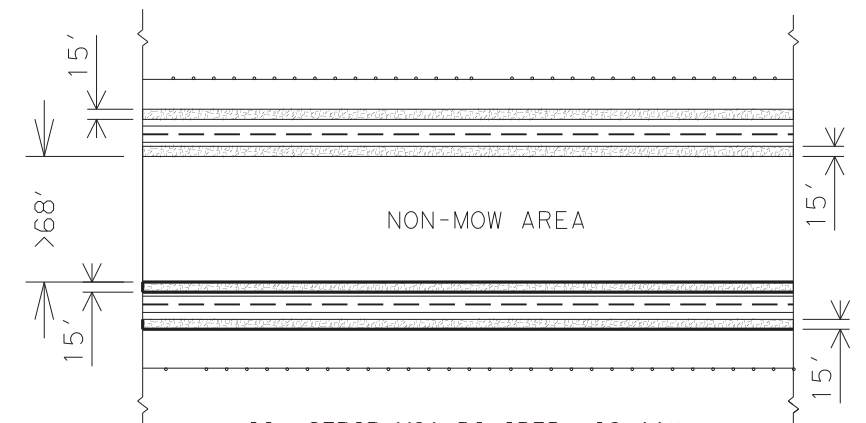
NOTE:  
 Additional STRIP MOWING at UNDETERMINED LOCATIONS - 500 Acres

DISCLAIMER  
 The use of this standard is governed by the "Texas Engineering Practice Act". No warranty of any kind is made by TxDOT for any purpose whatsoever. TxDOT assumes no responsibility for the conversion of this standard to other formats or for incorrect results or damages resulting from its use.

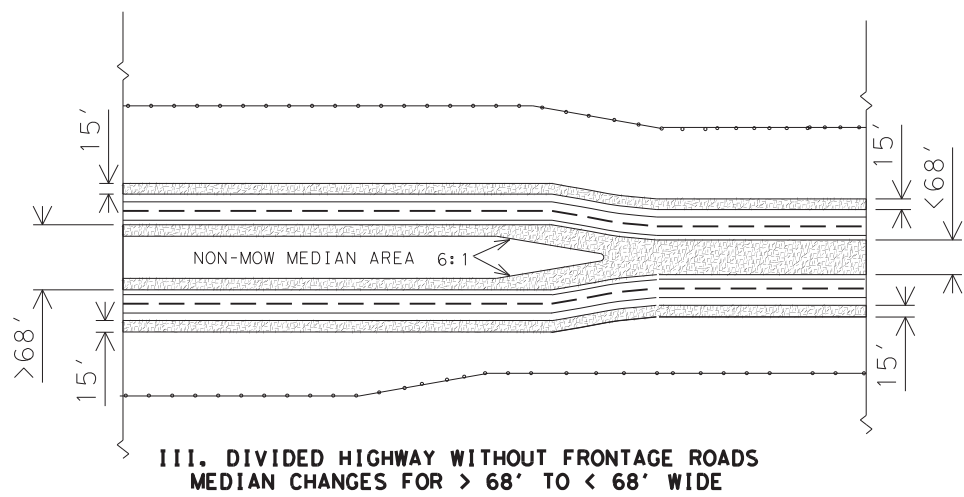
1	2	3	4	5	6	7	8	9	10	11	12	13	14	15	16
17	18	19	20	21	22	23	24	25	26	27	28	29	30	31	32
33	34	35	36	37	38	39	40	41	42	43	44	45	46	47	48
49	50	51	52	53	54	55	56	57	58	59	60	61	62	63	



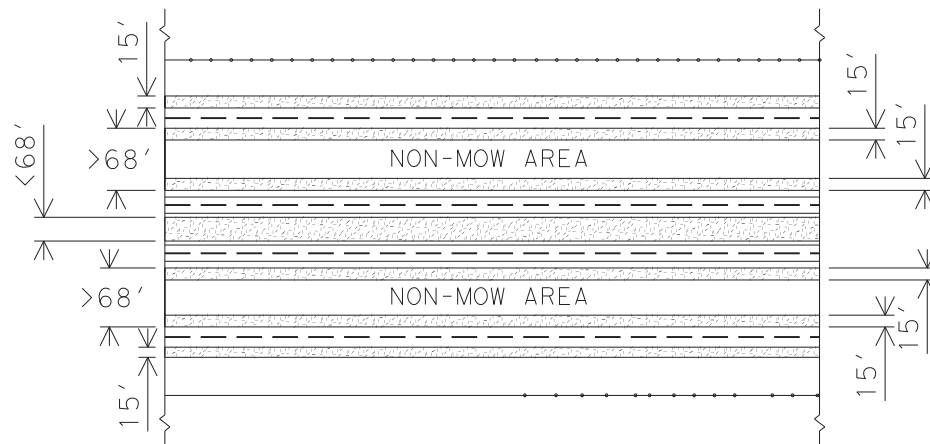
**I. STRIP MOW DIVIDED HIGHWAY WITHOUT FRONTAGE ROADS (MEDIAN < 68')**



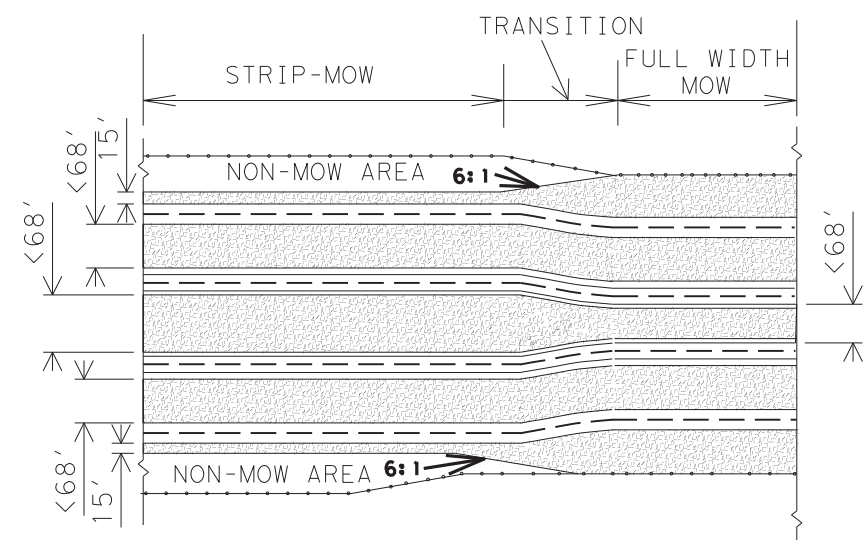
**II. STRIP MOW DIVIDED HIGHWAY WITHOUT FRONTAGE ROADS (MEDIAN > 68')**



**III. DIVIDED HIGHWAY WITHOUT FRONTAGE ROADS MEDIAN CHANGES FOR > 68' TO < 68' WIDE**



**IV. STRIP MOW WHEN SEPARATION BETWEEN MAIN LANE AND FRONTAGE ROADS IS WIDER THAN 68'**




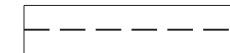
**V. TRANSITION FROM FULL WIDTH TO STRIP MOWING DIVIDED HIGHWAY WITH FRONTAGE ROADS (MEDIAN < 68' WIDE)**

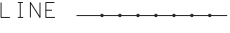
**GENERAL NOTES:**


1. MOW THE ENTIRE WIDTH OF MEDIANS AND OUTER SEPARATIONS (AREAS BETWEEN MAIN LANES, RAMPS, AND FRONTAGE ROAD) EXCEPT FOR NON-MOW AREAS.
2. MOW FULL-WIDTH ALL MEDIANS AND OUTER SEPARATIONS 68' OR LESS FROM PAVEMENT EDGE TO PAVEMENT EDGE.
3. FOR MEDIANS AND OUTER SEPARATIONS GREATER THAN 68' MOW A 15' ALONG EACH PAVEMENT EDGE.
4. NON-MOW AREAS IN MEDIANS & OUTER SEPARATIONS WILL BE CONSIDERED THE AREA IN MEDIANS AND OUTER SEPARATIONS GREATER THAN 68' BETWEEN THE 15' STRIP MOW AREAS.
5. OTHER NON-MOW AREA'S WILL BE SHOWN ELSEWHERE ON PLANS OR MARKED ON THE RIGHT OF WAY.

**KEY**

MOW AREA 

PAVED ROADWAY 

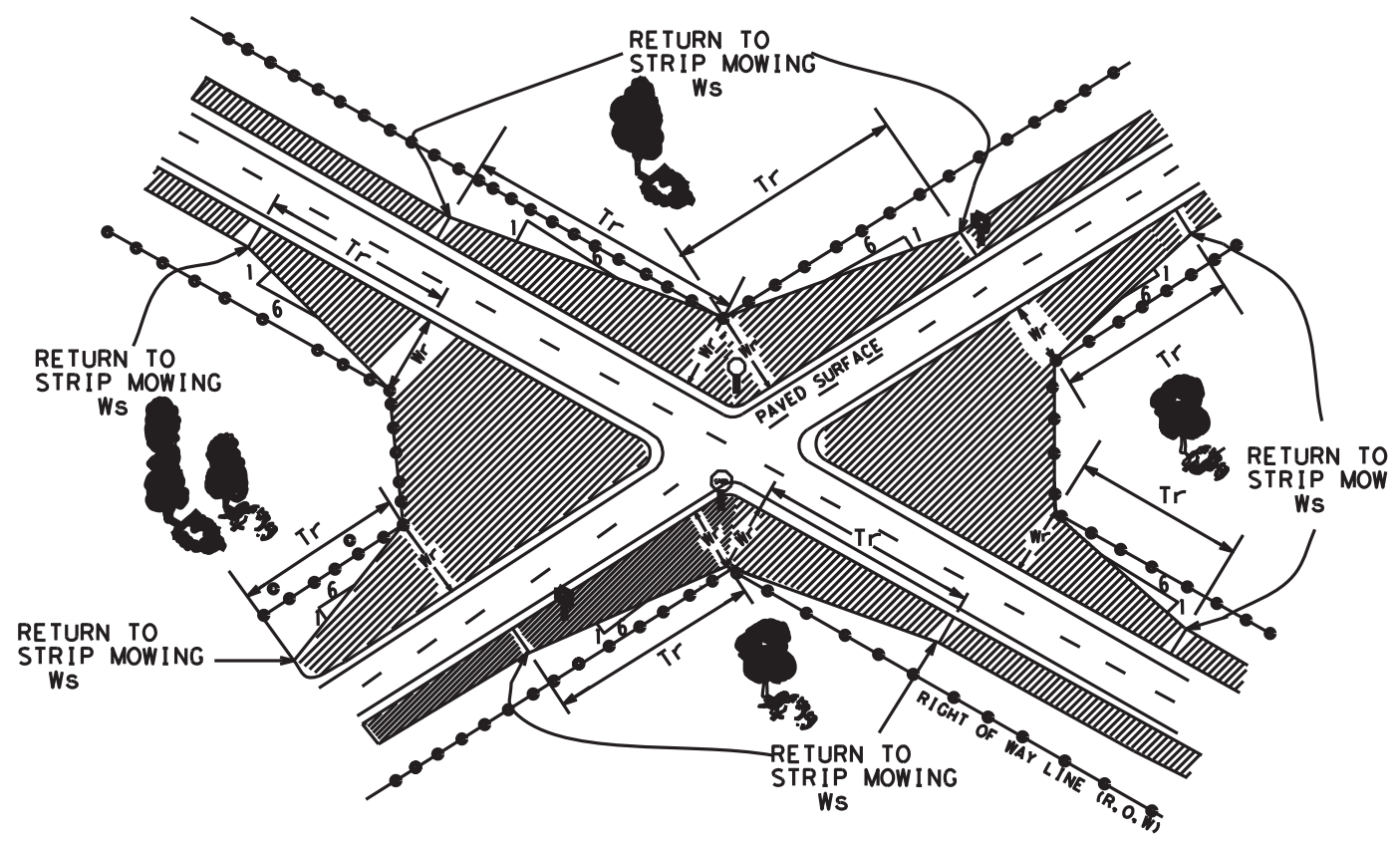
RIGHT-OF-WAY LINE 

 *Texas Department of Transportation*  
 Maintenance Division  
 Standard Plans

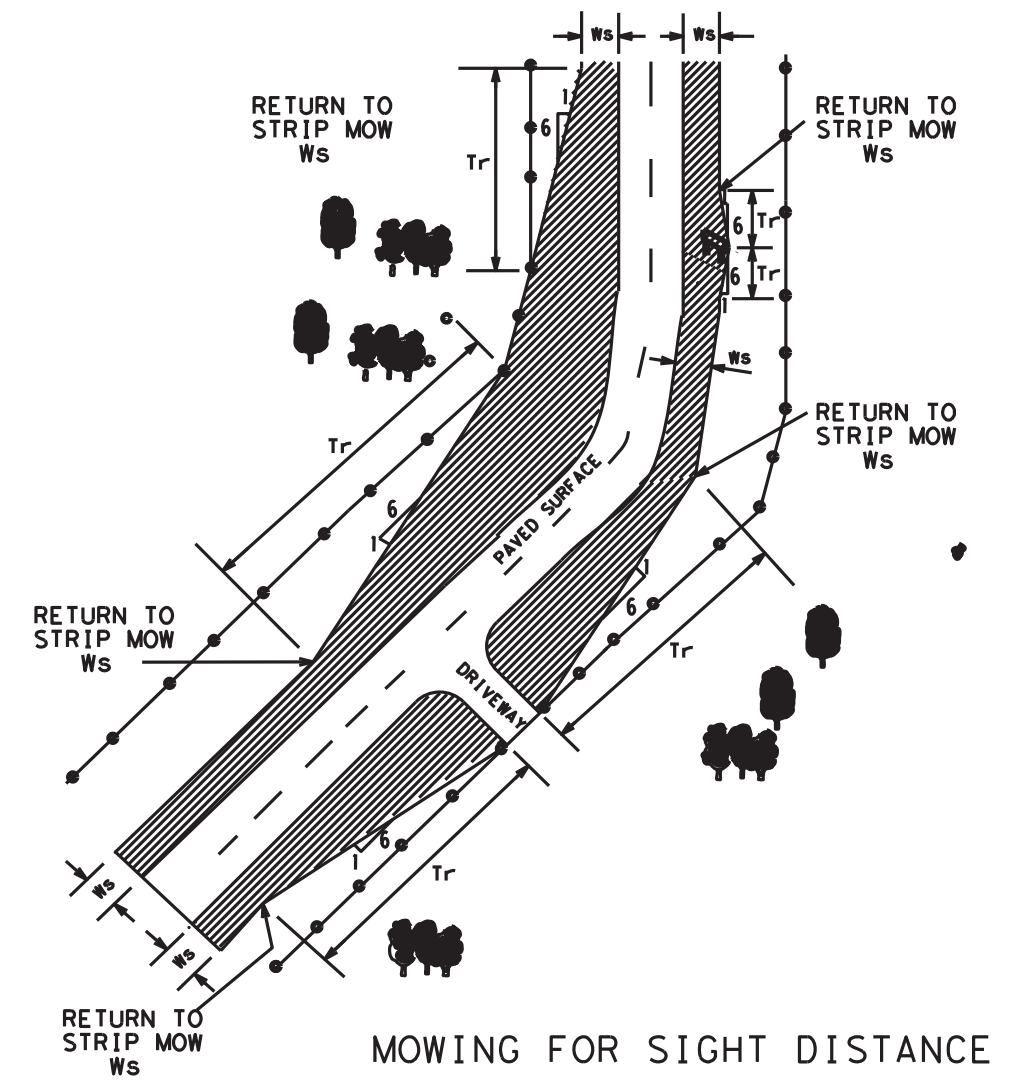
**STRIP MOWING  
 (DIVIDED HIGHWAYS)  
 STRIP-MOW-D-04**

SHEET 1 OF 1 NOT TO SCALE

FILE:	SMOWD04.DGN	DN:	LJB	CK:	JG	DW:	-	CK:	-	NEG NO.:	
© TxDOT JUNE 2004		STATE DISTRICT	BWD	FEDERAL REGION	N/A	FEDERAL AID PROJECT			SHEET		
REVISED:	6/03/2004	COUNTY			CONTROL	SECTION	JOB	HIGHWAY			
REVISED:		LAMPASAS			6439	72	001	US0190			



MOWING FOR SIGHT DISTANCE  
WITH TRANSITION FROM INTERSECTION  
BACK TO STRIP MOWING



MOWING FOR SIGHT DISTANCE  
TRANSITIONS AT DRIVEWAYS,  
SIGNS, AND CURVES

DISCLAIMER: The use of this standard is governed by the "Texas Engineering Practice Act". No warranty of any kind is made by TxDOT for any purpose whatsoever. TxDOT assumes no responsibility for the conversion of this standard to other formats or for incorrect results or damages resulting from its use.

**GENERAL NOTES:**

1. THE NORMAL WIDTH FOR STRIP MOWING IS 15' UNLESS OTHERWISE SHOWN ON THE PLANS.
2. MOW TO THE R.O.W. LINE IN FRONT OF BUSINESSES, RESIDENCES, CHURCHES, OR CULTIVATED FIELDS UNLESS OTHERWISE SHOWN ON THE PLANS.
3. TRANSITION FOR SIGHT DISTANCE TO R.O.W LINE OR AROUND SIGNS AS SHOWN ON THIS SHEET UNLESS OTHERWISE SHOWN ON THE PLANS.

	RIGHT OF WAY LINE
	MOWING LOCATION
$W_r$	R.O.W. WIDTH (AT START OF TRANSITION)
$W_s$	STRIP MOWING WIDTH
$T_r$	TRANSITION

*Texas Department of Transportation*  
Maintenance Division  
Standard Plans

STRIP MOWING NON-DIVIDED HIGHWAYS

STRIP-MOW-ND-04

SHEET 1 OF 1 NOT TO SCALE

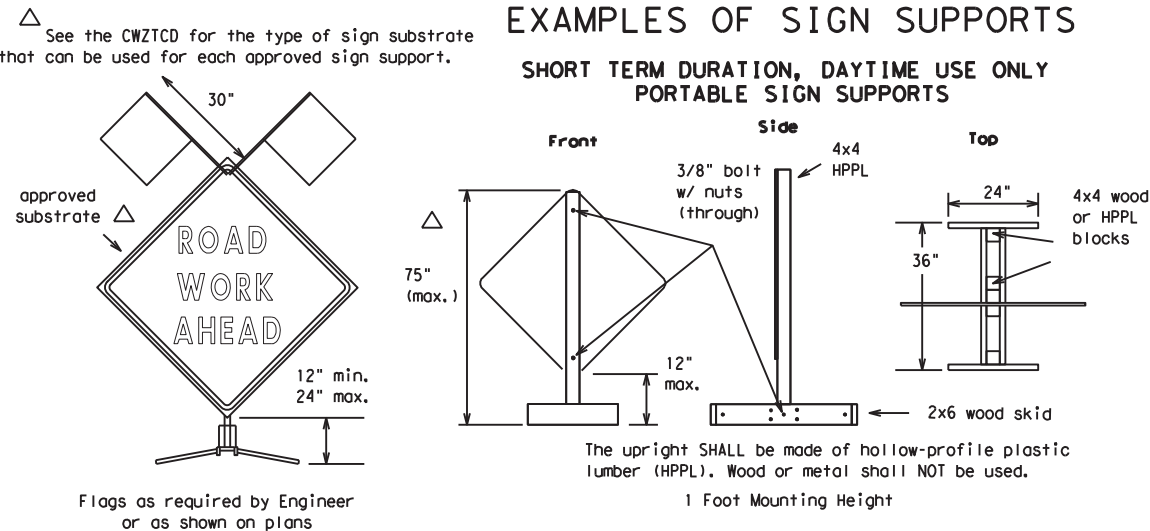
FILE: SMOWND04.DGN	DN: LJB	CK: JG	DW: -	CK: -	NEG NO.:
© TxDOT 2004	STATE DISTRICT	FEDERAL REGION	FEDERAL AID PROJECT		SHEET
REVISED: 5/18/2004	LJB	BWD	N/A	RMC - 643972001	6
REVISED:	COUNTY			CONTROL SECTION	JOB HIGHWAY
REVISED:	LAMPASAS			6439 72	001 US0190

DISCLAIMER  
The use of this standard is governed by the "Texas Engineering Practice Act". No warranty of any kind is made by TxDOT for any purpose whatsoever. TxDOT assumes no responsibility for the conversion of this standard to other formats or for incorrect results or damages resulting from its use.

1	2	3	4	5	6	7	8	9	10	11	12	13	14	15	16
17	18	19	20	21	22	23	24	25	26	27	28	29	30	31	32
33	34	35	36	37	38	39	40	41	42	43	44	45	46	47	48
49	50	51	52	53	54	55	56	57	58	59	60	61	62	63	

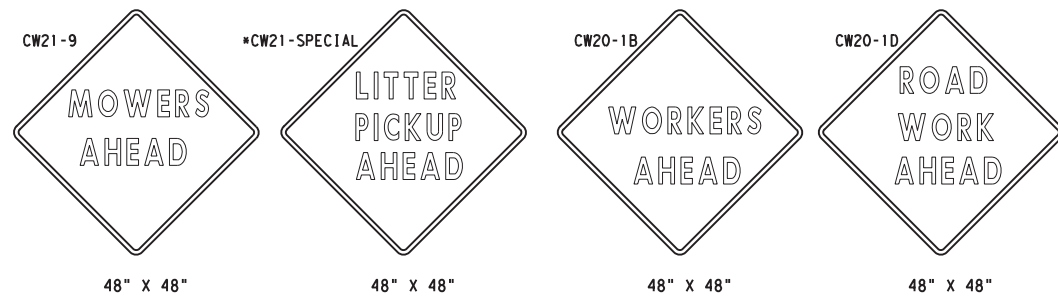
## EXAMPLES OF SIGN SUPPORTS

### SHORT TERM DURATION, DAYTIME USE ONLY PORTABLE SIGN SUPPORTS



Attachment to wooden supports will be by bolts and nuts or screws. Use TxDOT's or manufacturer's recommended procedures for attaching sign substrates to other types of sign supports.

**Nails will NOT be allowed.**



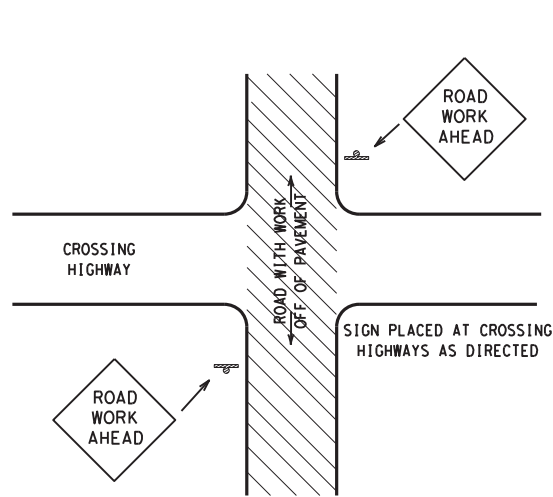
**SIGN IN ACCORDANCE WITH THE TEXAS MANUAL ON UNIFORM TRAFFIC CONTROL DEVICES FOR STREETS AND HIGHWAYS**

**MOWERS AHEAD SIGNS ARE USED FOR MOWING OPERATIONS.**

**LITTER PICKUP AHEAD, ROAD WORK AHEAD AND WORKER AHEAD SIGNS ARE USED AS DIRECTED FOR OTHER MAINTENANCE OPERATIONS WHEN ALL WORK OCCURS OFF OF THE PAVED HIGHWAY SURFACE.**

### ROLL-UP SIGNS CONFORMING TO DMS-8310 AND THE CWZTCD ALLOWED

\*Letter dimensions and spacing for "CW21-SPECIAL" is the same as C20-1D



TYPICAL LOCATION OF SIGNS AT HIGHWAY CROSSING

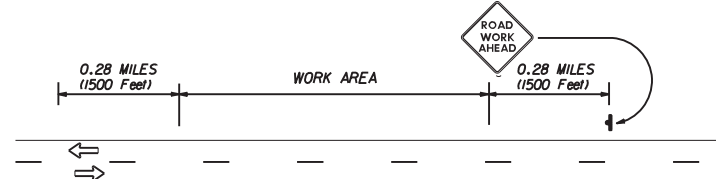
WORK AREA IS A MAXIMUM OF 2.0 MILES UNLESS OTHERWISE DIRECTED. SIGNS MAY REMAIN IN PLACE ONLY DURING DAYLIGHT HOURS.

SIGNS ARE TO BE PLACED 6' TO 12' OFF OF THE PAVED SURFACE UNLESS OTHERWISE DIRECTED.

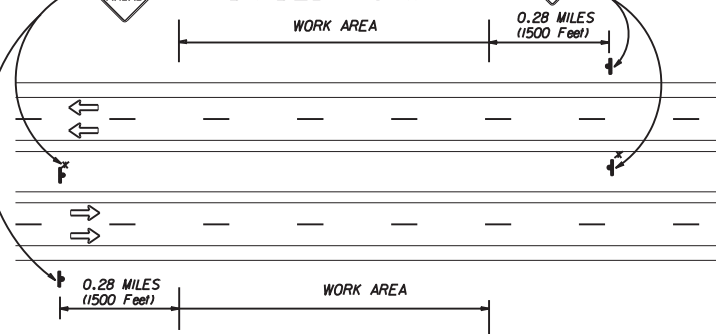
ROAD WORK AHEAD SIGNS SHOWN AS EXAMPLES, ONE OF THE FOUR TYPE SIGNS WILL BE USED AS DIRECTED.

\* SIGNS IN THE MEDIAN ARE REQUIRED WHEN WORK OCCURS IN MEDIAN

### UNDIVIDED HIGHWAY OR FRONTAGE ROAD



### DIVIDED HIGHWAY



### TRAFFIC CONTROL PLAN FOR WORK OFF OF THE PAVED SURFACE.

### GENERAL NOTES FOR WORK ZONE SIGNS

- Contractor shall install and maintain signs in a straight and plumb condition and/or as directed by the Engineer.
- Wooden sign posts shall be painted white.
- Barricades shall NOT be used as sign supports.
- Nails shall NOT be used to attach signs to any support.
- All signs shall be installed in accordance with the plans or as directed by the Engineer. Signs shall be used to regulate, warn, and guide the traveling public safely through the work zone.
- The Contractor may furnish either the sign design shown in the plans or in the "Standard Highway Sign Designs for Texas" (SHSD). The Engineer/Inspector may require the Contractor to furnish other work zone signs that are shown in the TMUTCD but may have been omitted from the plans. Any variation in the plans shall be documented by written agreement between the Engineer and the Contractor's Responsible Person. All changes must be documented in writing before being implemented. This can include documenting the changes in the Inspector's TxDOT diary and having both the Inspector and Contractor initial and date the agreed upon changes. The additional signs requested by the Engineer/Inspector shall not be subsidiary.
- The Contractor shall furnish sign supports listed in the "Compliant Work Zone Traffic Control Device List" (CWZTCD). The Contractor shall install the sign support in accordance with the manufacturer's recommendations. If there is a question regarding installation procedures, the Contractor shall furnish the Engineer a copy of the manufacturer's installation recommendations so that the Engineer can verify the correct procedures are being followed.
- The Contractor is responsible for sign installations and replacing signs with damaged or cracked substrates and/or damaged or marred reflective sheeting as directed by the Engineer/Inspector.
- Identification markings may be shown only on the back of the sign substrate. The maximum height of letters and/or company logos used for identification shall be 1".
- The Contractor shall replace damaged wood posts. New or damaged wood sign posts shall not be spliced.

### Duration of Work (as defined by the "Texas Manual on Uniform Traffic Control Devices" Part VI)

- The Contractor is responsible for ensuring the sign support and substrate meets crashworthiness. For mowing operation all signs and supports are Short-term Duration for daytime work.
- The Contractor shall furnish the sign sizes shown on this sheet or as directed by the Engineer.

### SIGN SUBSTRATES

- The Contractor shall ensure that the sign substrate is allowed for the type of sign support that is being used. The CWZTCD lists each substrate that can be used on the different types and models of sign supports.
- "Mesh" type materials are NOT an approved sign substrate.
- All wooden individual sign panels fabricated from 2 or more pieces shall have one or more plywood cleat, 1/2" thick by 6" wide, fastened to the back of the sign and extending fully across the sign. The cleat shall be attached to the back of the sign using wood screws that do not penetrate the face of the sign panel. The screws shall be placed on both sides of the splice and spaced at 6" centers. The Engineer may approve other methods of splicing the sign faces.

### REFLECTIVE SHEETING

- Reflectorized signs shall be constructed of sheeting meeting the color and retro-reflectivity requirements of DMS-8300 or DMS-8310. The DMS specifications can be accessed from the following web address:  
[http://manuals.dot.state.tx.us:80/dynaweb/colmates/@Generic\\_CollectionView;cs=default;ts=default](http://manuals.dot.state.tx.us:80/dynaweb/colmates/@Generic_CollectionView;cs=default;ts=default)
- White sheeting, meeting the requirements of DMS-8300 Type C (High Specific Intensity), shall be used for signs with white background and channelizing devices.
- Orange sheeting, meeting the requirements of DMS-8300 Type E (Fluorescent Prismatic), shall be used for signs with orange backgrounds.

### SIGN LETTERS

- All sign letters and numbers shall be clear, and open rounded type uppercase alphabet letters as approved by the Federal Highway Administration (FHWA) and as published in the "Standard Highway Sign Design for Texas" manual. Signs, letters and numbers shall be of first class workmanship in accordance with Department Standards and Specifications.

### REMOVING OR COVERING

- Signs should be removed or completely covered when not mowing.
- Duct tape or other adhesive material shall NOT be affixed to a sign face.
- Signs and supports shall be removed by the end of the day.

### SIGN SUPPORT WEIGHTS

- Where sign supports require the use of weights to keep from turning over, the use of sandbags with dry cohesionless sand is recommended.
- The sandbags will be tied shut to keep the sand from spilling and to maintain a constant weight.
- Rock, concrete, iron, steel or other solid objects will not be permitted for use as sign support weights.
- Sandbags should weigh a minimum of 35 lbs and a maximum of 50 lbs.
- Sandbags shall be made of a durable material that tears upon vehicular impact.
- Rubber (such as tire inner tubes) shall NOT be used for sandbags.
- Rubber ballasts (such as those used with cones or edgeline channelizers) shall NOT be used as sign support weights.
- Sandbags shall only be placed along or laid over the base supports of the traffic control device and shall not be suspended above ground level or hung with rope, wire, chains or other fasteners. Sandbags shall be placed along the length of the skids to weigh down the sign supports.
- Sandbags shall NOT be placed under the skid and shall not be used to level sign supports placed on slopes.

### CONTRACTOR REQUIREMENTS FOR MAINTAINING PERMANENT SIGNS WITHIN THE PROJECT LIMITS

Any sign, sign support or traffic control device that is struck or damaged by the Contractor or his/her construction equipment shall be replaced or repaired as soon as possible by the Contractor at the Contractor's expense.

Only pre-qualified products shall be used. A copy of the "Compliant Work Zone Traffic Control Devices List" (CWZTCD) describes pre-qualified products and their sources and may be obtained by contacting:

Standards Engineer  
Traffic Operations Division - TE  
Texas Department of Transportation  
125 East 11th Street  
Austin, Texas 78701-2483  
Phone (512) 416-3120  
Fax (512) 416-3299

Instructions to locate the "CWZTCD" on TxDOT website are:

Start at website - [www.dot.state.tx.us](http://www.dot.state.tx.us)  
Click on "About TxDOT",  
Click on "Organizational Chart",  
Click on "Traffic Operations Box",  
Click on "Compliant Work Zone Traffic Control Devices",  
Click on "View PDF".  
This site is printable.

Texas Department of Transportation  
Maintenance Division  
Standard Plans

## ROADSIDE TRAFFIC CONTROL PLAN

SHEET 1 OF 1 RS-TCP-05 NOT TO SCALE

FILE: RSTC05.DGN	DN: LJB	CR: JG	DW: -	CR: -	NEG NO.: -
© TxDOT FEBRUARY 2005		STATE DISTRICT	FEDERAL REGION	FEDERAL AID PROJECT	SHEET
REVISED: September 17, 2004	BWD	N/A	RMC - 643972001	7	
REVISED: FEBRUARY 2, 2005 Sign placement in TCP		COUNTY	CONTROL SECTION	JOB	HIGHWAY
		LAMPASAS	6439 72	001	US0190