

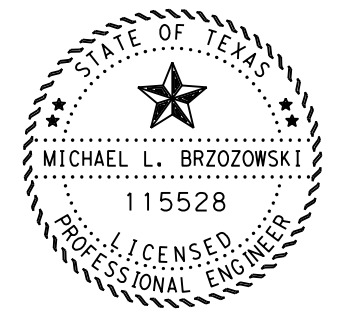
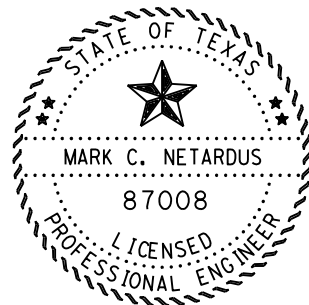
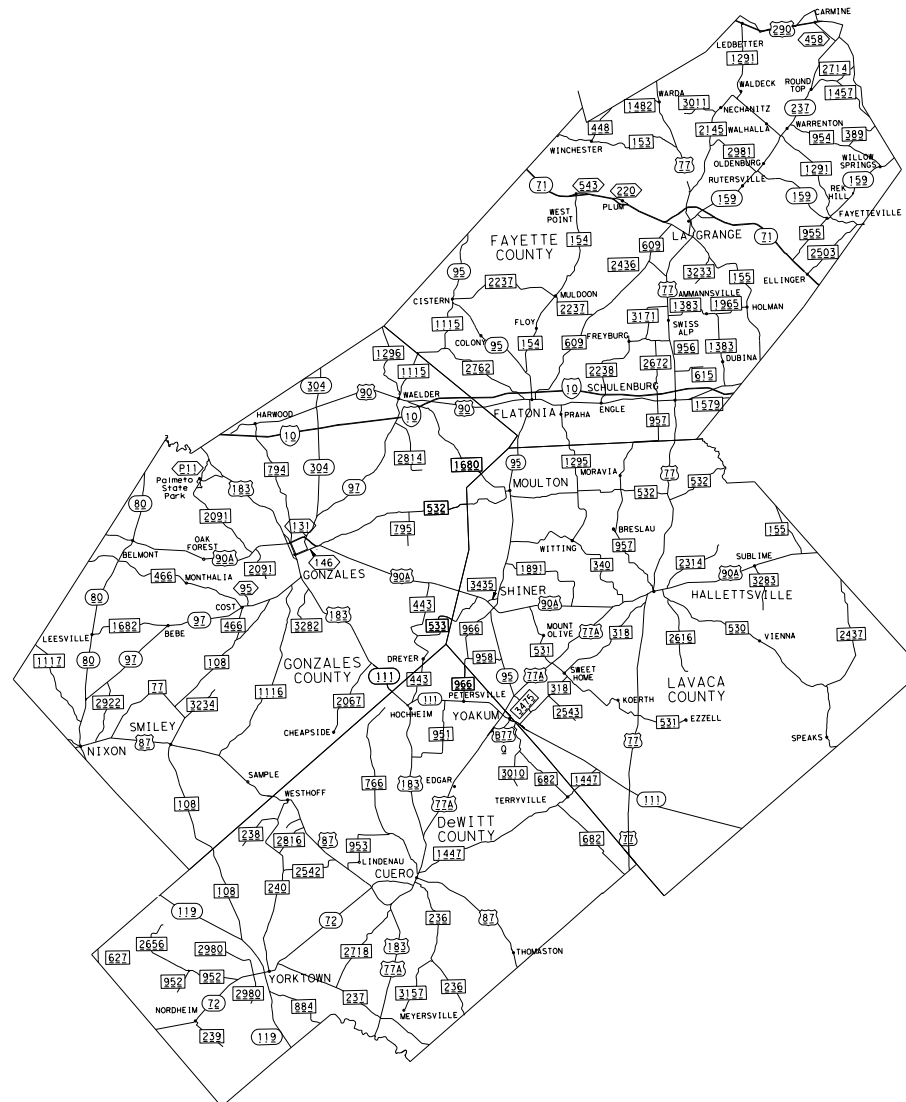
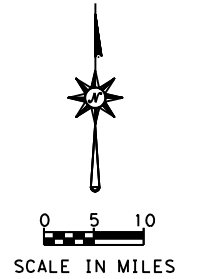
STATE OF TEXAS TEXAS DEPARTMENT OF TRANSPORTATION

INDEX OF SHEETS

SHEET NO.	DESCRIPTION
1.	TITLE SHEET
2.	GENERAL NOTES
3.	ESTIMATE AND QUANTITY SHEET

WORK CONSISTING OF ASPHALTIC PATCHING MIX (MATERIALS ONLY)

PROJECT NO: MMC 6433-04-001
COUNTY: FAYETTE CO, ETC



APPROVED FOR LETTING: 1-23 20 23

Michael Brzozowski PE
DIRECTOR OF OPERATIONS

THE STANDARD SHEETS SPECIFICALLY IDENTIFIED ABOVE HAVE BEEN SELECTED BY ME OR UNDER MY RESPONSIBLE SUPERVISION AS BEING APPLICABLE TO THIS PROJECT.

Mark C. Netardus P.E. 1-23-23
MAINTENANCE ENGINEER DATE

**DEWITT, FAYETTE, LAVACA
AND GONZALES COUNTY**
YOAKUM DISTRICT

EXCEPTIONS: NONE
EQUATIONS: NONE
RAILROAD CROSSING: NONE

SPECIFICATIONS ADOPTED BY THE TEXAS DEPARTMENT OF TRANSPORTATION, NOVEMBER 1, 2014 AND SPECIFICATION ITEMS LISTED AND DATED AS FOLLOWS, SHALL GOVERN ON THIS PROJECT

Texas Department of Transportation
© 2023 BY TEXAS DEPARTMENT OF TRANSPORTATION
ALL RIGHTS RESERVED SHEET 1 OF 1

FED. RD. DIV. NO.		PROJECT NO.	
6		6433-04-001	
CONT.	SECT.	JOB	HIGHWAY NO.
			US 77
STATE	DIST.	COUNTY	SHEET NO.
TEXAS	YKM	FAYETTE, ETC	1

Project Number: MMC 6433-04-001

County: FAYETTE, ETC.

GENERAL NOTES:

This is a contract for supplying material on an as needed basis.

The Maintenance Supervisor will coordinate with the Contractor to have the material delivered or picked up.

If the delivery option is chosen, the material will be delivered to the locations specified below.

The material will be delivered to the following location when ordered by the bag:

Fayette Maintenance Yard
2000 E SH 71 Bypass
LaGrange, Texas 78945

The material will be delivered to the following location when ordered bulk:

Fayette Maintenance Yard – ST 1
12000 E SH 71 Bypass
LaGrange, Texas 78945

Lavaca Maintenance Yard – ST 2
1483 E Cemetery Rd.
Hallettsville, Texas 77964

DeWitt Maintenance Yard – ST 3
40 Cooperative Way
Cuero, Texas 77954

Gonzales Maintenance Yard –ST 4
2005 E Sarah Dewitt
Gonzales, Texas 78629

Contractor questions on this project are to be addressed to the following individual:

Mark Netardus Mark.Netardus@txdot.gov
Michael Brzozowski Michael.Brzozowski@txdot.gov

Questions may be submitted via the Letting Pre-Bid Q&A web page. This webpage can be accessed from the Notice to Contractors dashboard located at the following Address:
<https://tableau.txdot.gov/views/ProjectInformationDashboard/NoticetoContractors>

Project Number: MMC 6433-04-001

County: FAYETTE, ETC.

All contractor questions will be reviewed by the Engineer. All questions and any corresponding responses that are generated will be posted through the same Letting Pre-Bid Q&A web page.

The Letting Pre-Bid Q&A web page for each project can be accessed by using the dashboard to navigate to the project you are interested in by scrolling or filtering the dashboard using the controls on the left. Hover over the blue hyperlink for the project you want to view the Q&A for and click on the link in the window that pops up.

The Maintenance Supervisor's contact information for the following counties are:

Fayette County: Kyle Novicke - 979-968-8333 or Kyle.Novicke@txdot.gov
Lavaca County - David Sternadel: 361-798-6452 or David.Sternadel@txdot.gov
DeWitt County - Robert Herman: 361-935-3656 or B.Herman@txdot.gov
Gonzales County - Joseph Kridler: 830-857-5543 or Joseph.Kridler@txdot.gov

The contractor is responsible for furnishing and delivering the asphaltic concrete patching materials to the agreed upon location(s). The delivery hours will be Monday through Thursday 7:00 AM to 5:00 PM.

The Maintenance Section will unload the material when delivered by the bag and stockpile the material when delivered by the ton.

Furnish a certified copy of the legal gross weight of each vehicle hauling materials by weight and certified measurements for all trucks hauling material by volume.

ITEM 8019: ASPHALTIC CONCRETE PATCHING MATERIAL (MATERIAL ONLY)

There will be a minimum order of a truckload when ordering Patching Material by the bag to be delivered.



Estimate & Quantity Sheet

CONTROLLING PROJECT ID 6433-04-001

DISTRICT Yoakum
HIGHWAY US0077

COUNTY Fayette

CONTROL SECTION JOB				6433-04-001		TOTAL EST.	TOTAL FINAL
PROJECT ID				A00193497			
COUNTY				Fayette			
HIGHWAY				US0077			
ALT	BID CODE	DESCRIPTION	UNIT	EST.	FINAL		
	8019-6023	ASPH CONC PAT MAT(ASPPM)(DEL)(SITE 1)	TON	250.000		250.000	
	8019-6024	ASPH CONC PAT MAT(ASPPM)(DEL)(SITE 2)	TON	250.000		250.000	
	8019-6025	ASPH CONC PAT MAT(ASPPM)(DEL)(SITE 3)	TON	250.000		250.000	
	8019-6026	ASPH CONC PAT MAT(ASPPM)(DEL)(SITE 4)	TON	250.000		250.000	
	8019-6037	ASPHALTIC CONC PATCH MATERIAL (DEL) ST1	BAG	1,050.000		1,050.000	