

STATE OF TEXAS
DEPARTMENT OF TRANSPORTATION

PLANS OF PROPOSED
STATE HIGHWAY IMPROVEMENT

PROJECT: MMC 6419-76-001

COUNTY: CASS, ETC.

HIGHWAY: SH 155, ETC.

FOR THE PURCHASE OF MATERIALS ONLY, DENSE GRADED HOT MIX

I HEREBY CERTIFY THAT THE CONSTRUCTION
WORK ON THIS PROJECT WAS PERFORMED IN
SUBSTANTIAL COMPLIANCE WITH THE CONTRACT

Note: See Project Summary Sheets for complete
listing of limits, lengths, equations and exceptions.

Index of Sheets:

- 2, 2D General Notes
- 3 Estimate & Quantity Sheet
- 4 Quantity Summary
- 5 Map - Linden Maintenance Office

CONTRACTOR NAME:
CONTRACTOR ADDRESS:

DATE WORK BEGAN:

DATE WORK COMPLETED:

DATE WORK ACCEPTED:

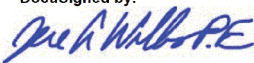
RECOMMENDED FOR LETTING:

APPROVED FOR LETTING:

 P.E.

August 12, 2022

Director of Maintenance

DocuSigned by:
 P.E.
0EAA5DC25F0F45E...
District Engineer (Atlanta)

8/15/2022

SPECIFICATIONS ADOPTED BY THE TEXAS DEPARTMENT
OF TRANSPORTATION, NOVEMBER 1, 2014 AND SPECIAL
SPECIFICATION ITEMS INCLUDED IN THE CONTRACT SHALL
GOVERN ON THIS PROJECT.

DISTRICT	COUNTY	HIGHWAY	PROJECT
ATLANTA	CASS, ETC.	SH 155, ETC.	MMC 6419-76-001

County: Cass, etc.

Control: 6419-76-001

Highway: SH0155, etc.

GENERAL NOTES:

General:

The intent of this contract is to provide hot mix materials at non-site specific locations within the Linden Maintenance Office area limits. The contractor will provide materials: at the hot mix plant to be loaded into Department owned trucks or Department contracted trucks (pick up), or in a contractor truck to a designated location as defined in the Work Order (delivery).

A map of the Linden Maintenance Office geographic limits is included in this contract.

Contractor questions on this project are to be emailed to the following individuals:

Jason Dupree, P.E. – Director of Maintenance

Jason.Dupree@txdot.gov

Charlotte Aslin – Maintenance Program Specialist

Charlotte.Aslin@txdot.gov

Contractor questions will only be accepted through email to the above individuals.

All contractor questions will be reviewed by the Engineer. Once a response is developed, it will be posted to TxDOT's Public FTP at the following Address:

<https://ftp.dot.state.tx.us/pub/txdot-info/Pre-Letting Responses/>

All questions submitted that generate a response will be posted through this site. The site is organized by District, Project Type (Construction or Maintenance), Letting Date, CCSJ/Project Name.

Questions regarding the plans and/or the project after the contract has been awarded should be referred to the Managing Engineer:

Jason Dupree, P.E.

Atlanta District Director of Maintenance

701 E Main St.

Atlanta, TX 75551

903-799-1248

Each contract awarded by the Department stands on its own and as such, is separate from other contracts. A Contractor awarded multiple contracts must be capable and sufficiently staffed to concurrently process any or all contracts.

Prior to beginning operations, the Department will arrange a preconstruction conference between representatives of the Department and the Contractor. In this meeting, the representatives from

County: Cass, etc.

Control: 6419-76-001

Highway: SH0155, etc.

all parties will discuss the contract, proposed procedures and the plans for performing the work while providing for safe passage of traffic at all times. Specifications, unusual conditions, and other pertinent items regarding the work will also be discussed.

Limit the use of the roadway for the hauling of material to legal loads. Keep the traveled surfaces used in hauling operations free of dirt or other materials.

Department-approved safety hats and safety vests will be worn by all workers and visitors when:

Workers are outside of vehicles at all outdoor worksites. This includes those who occasionally visit worksites either on the highway surface or right-of-way.

Working in areas where there is a danger of head injury from impact, from falling or flying objects, or from electrical shock or burns.

Non-compliance with this requirement will be grounds for suspension of work.

All work on this contract will be scheduled and directed by the Maintenance Section Supervisor James Barron, 903-824-6663.

Item 2: Instructions to Bidders

This project includes plan sheets that are not part of the bid proposal. Views plans on-line or download from the web at: <https://www.txdot.gov/business/letting-bids/plans-online.html>.

Order plans from any of the plan reproduction companies shown on the web at: http://www.dot.state.tx.us/business/contractors_consultants/repro_companies.htm.

Item 8: Prosecution and Progress

Time charges will be in accordance with Article 8.3.1.5 "Calendar Day".

In accordance with Article 8.6 "Failure to Complete Work on Time," liquidated damages will be charged for failure to complete each Work Order in the specified number of days. The amount assessed will be based on actual damages to the department.

Time requirements for each of the Work Orders, will be indicated on each individual Work Order. Contractor will be given no less than 24 hours' notice for hot mix (pick up) and 48 hours' notice for hot mix (delivery) to successfully complete each Work Order.

Notify the Maintenance Supervisor when encountering any unforeseen delays.

County: Cass, etc.

Control: 6419-76-001

Highway: SH0155, etc.

Item 9: Measurement & Payment

In accordance with Article 9.1, "Measurement of Quantities," furnish the tare and maximum gross weights as well as the volume capacity of all vehicles, trucks, truck-tractors, trailers, semi-trailers, or combination of such vehicles used to deliver materials for the contract. Also, furnish calculations supporting these weights and capacities. Provide all measurements required for pay a minimum of 2 days before the equipment is used.

In accordance with Article 9.2 "Plans Quantity Measurement," plans quantity measurement requirements are not applicable for this contract.

Contractor is responsible for obtaining annual overweight tolerance permit if hauling material which exceeds the legal road weight.

In addition to the complete destination address, each delivery ticket must be clearly marked with the work order number. Each shipment must be accompanied by a haul ticket.

Contractor's driver shall report to the State's representative at the time of arrival at the final delivery location and obtain a signature documenting the date and time.

Contractor must provide a conversion factor to convert hot mix from tons to cubic yards.

The minimum call out per work will be 20 tons.

Item 500: Mobilization

Mobilization does not apply to this non-site specific materials contract.

Item 502: Barricades, Signs and Traffic Handling

TxDOT will provide any traffic control needed.

Use strobe lights or rotating beacons on all motorized equipment, operating on or adjacent to the road surface.

Item 8011: Dense Graded Hot-Mix Asphalt (Small Quantity)(Materials Only)

Monitor the temperature of the material in the truck before shipping to ensure that it does not exceed 350°F and is not lower than 215°F at delivery. The Department will not pay for or allow placement of any mixture produced above 350°F.

No RAS will be accepted in the mix design for this contract. Use aggregate that meets the SAC requirement of Class A.

County: Cass, etc.

Control: 6419-76-001

Highway: SH0155, etc.

Binder substitution is limited to a reduction in one high temperature grade. This limitation does not apply to low temperature grade. Binder substitution is allowed when aged recycled binder is used.

Use field sand with a sand equivalent value of at least 35 when sampled and tested in accordance with TEX-203-F.

The Plant is the designated aggregate sampling location, unless otherwise approved by the Engineer.

For Hauling Operations:

- Supply tarp and all components necessary to tarp materials during transport.
- Document wait time, in excess of one hour, when required to remain at a TxDOT designated location until unloaded. Demurrage charges shall be invoiced in 15 minute increments.
- Make all deliveries between the hours of 8:00am and 4:00pm CST unless prior arrangements have been made with the Maintenance Supervisor.

ESTIMATE SUMMARY

ROADWAY		A L T	ITEM CODE			DESCRIPTION	UNIT	TOTAL	
			EST	FINAL	ITEM NO			DESC CODE	SP NO
			8011	6001		D-GR HMA (SQ) TY D PG 64-22 (PICKUP)	TON	1,100.000	
			8011	6002		D-GR HMA (SQ) TY D PG 64-22 (DELIVERY)	TON	1,100.000	
			8011	6003		D-GR HMA (SQ) TY D PG 70-22 (PICKUP)	TON	350.000	
			8011	6004		D-GR HMA (SQ) TY D PG 70-22 (DELIVERY)	TON	350.000	

ESTIMATE & QUANTITY SHEET

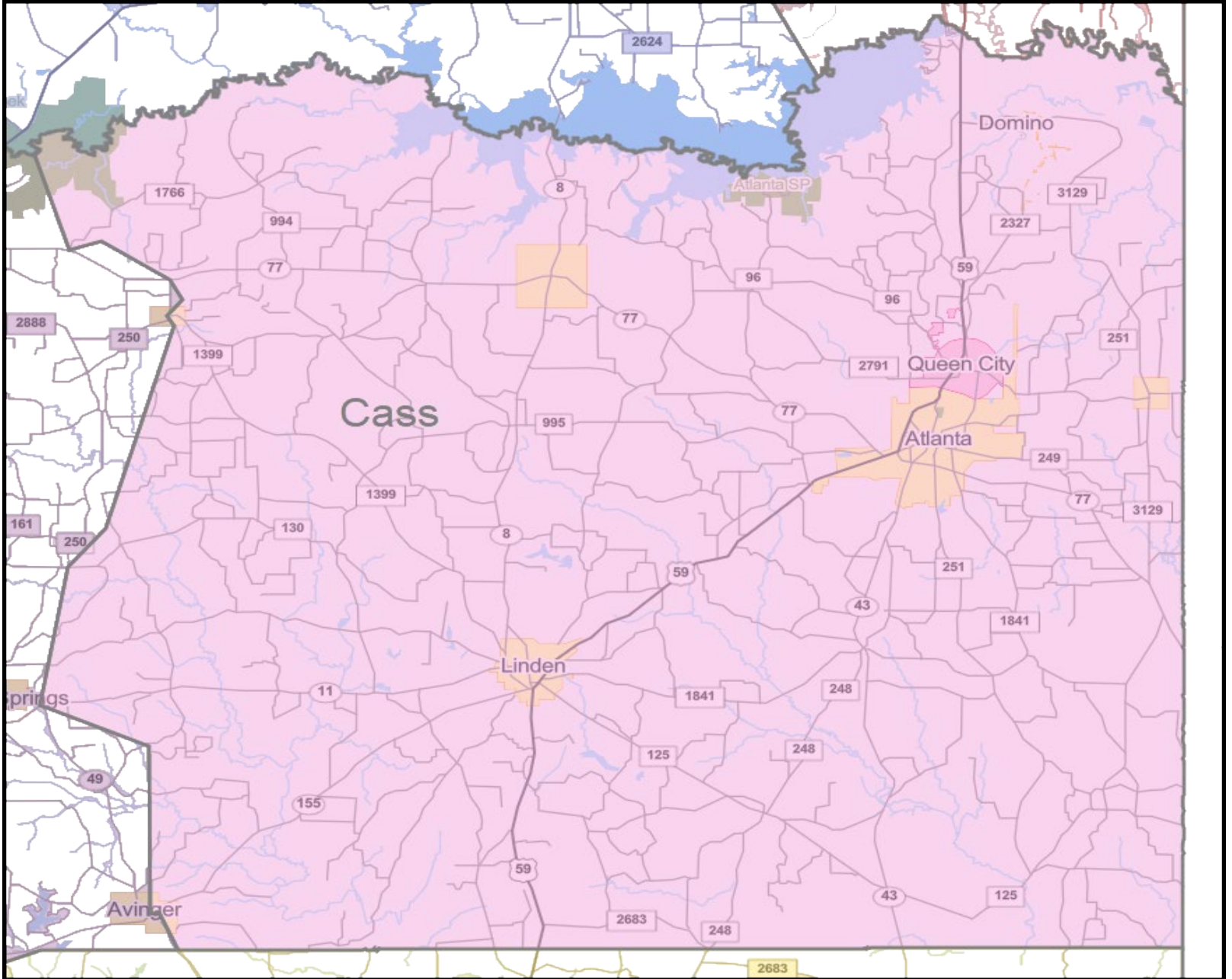
DISTRICT	COUNTY	HIGHWAY	PROJECT	SHEET NO
ATL	CASS, ETC.	SH 155, ETC.	MMC 6419-76-001	3

ITEM		DESCRIPTION	QUANTITY	UNIT
8011	6001	D-GR HMA (SQ) TY D PG 64-22 (PICKUP)	1100	TONS
8011	6002	D-GR HMA (SQ) TY D PG 64-22 (DELIVERY)	1100	TONS
8011	6003	D-GR HMA (SQ) TY D PG 70-22 (PICKUP)	350	TONS
8011	6004	D-GR HMA (SQ) TY D PG 70-22 (DELIVERY)	350	TONS

QUANTITY SUMMARY

© 2022 by Texas Department of Transportation
All Rights Reserved

DISTRICT	COUNTY	HIGHWAY	PROJECT	SHEET NO
ATL	CASS, ETC.	SH 155, ETC.	MMC 6419-76-001	4



MAP - LINDEN MAINTENANCE OFFICE

© 2022 by Texas Department of Transportation
All Rights Reserved

DISTRICT	COUNTY	HIGHWAY	PROJECT	SHEET NO
ATLANTA	CASS, ETC.	SH 155, ETC.	MMC 6419-76-001	5