

INDEX OF SHEETS

SHEET NO.	DESCRIPTION
1	TITLE SHEET
2-2A	GENERAL NOTES
3	ESTIMATE AND QUANTITY SHEET
4	LOCATION MAP
5	SUMMARY OF LOCATIONS
6	RS-TCP-05

STATE OF TEXAS
DEPARTMENT OF TRANSPORTATION

PLANS OF PROPOSED
HIGHWAY ROUTINE MAINTENANCE CONTRACT

TYPE OF WORK:

LANDSCAPE MAINTENANCE

PROJECT NO. : 6394-23-001

HIGHWAY : IH 30, ETC.

LIMITS OF WORK :

VARIOUS LOCATIONS IN HOPKINS COUNTY

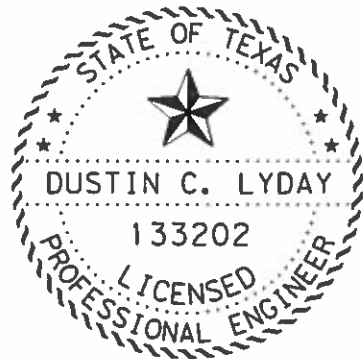
GRAPHICS FILE		MAINTENANCE PROJECT NO.		SHEET NO.
		6394-23-001		1
CHECKED	STATE	STATE DIST.	COUNTY	
	TEXAS	PAR	HOPKINS	
CHECKED	CONT.	SECT.	JOB	HIGHWAY NO.
	6394	23	001	IH 30, ETC.

BARRICADES AND WARNING SIGNS

PROJECT LIMIT BARRICADES WILL NOT BE REQUIRED. THE CONTRACTOR SHALL PROVIDE AND ERECT WARNING SIGNS IN ACCORDANCE WITH THE BARRICADE & CONSTRUCTION STANDARDS, TCP STANDARDS, THE "TEXAS MANUAL ON UNIFORM TRAFFIC CONTROL DEVICES" AND AS DIRECTED.

REQUIRED SIGNS SHALL BE IN ACCORDANCE WITH BC (11)- 14 THRU BC (12)- 14 AND THE "TEXAS MANUAL ON UNIFORM TRAFFIC CONTROL DEVICES".

SEE LOCATION MAP



[Signature], PE 10/28/2021
DATE

THE STANDARD SHEETS SPECIFICALLY IDENTIFIED ABOVE, AS MARKED WITH (X) HAVE BEEN SELECTED BY ME OR UNDER MY RESPONSIBLE SUPERVISION AS BEING APPLICABLE TO THIS PROJECT.



SUBMITTED FOR LETTING:
[Signature] 10-28 20 21
AREA ENGINEER

RECOMMENDED FOR LETTING
[Signature] 11-16 20 21
DISTRICT MAINTENANCE ENGINEER

APPROVED FOR LETTING
[Signature] 11-16 20 21
DIRECTOR OF OPERATIONS

SPECIFICATIONS ADOPTED BY THE TEXAS DEPARTMENT OF TRANSPORTATION NOVEMBER 1, 2014 AND SPECIAL SPECIFICATION ITEMS INCLUDED IN THE CONTRACT SHALL GOVERN ON THIS PROJECT.

Project Number: 6394-23-001

Control: 6394-23-001

County: HOPKINS

Highway: IH 30, etc.

GENERAL NOTES:

PROJECT DESCRIPTION: This project shall consist of landscape maintenance on various highways in Hopkins County as denoted on the location map. The contractor shall make an examination of the project sites and be completely familiar with the nature and extent of the maintenance work to be accomplished.

Questions prior to letting may be submitted to the following:

Sulphur Springs Area Office

Jesse Herrera, P.E. – Jesse.Herrera@txdot.gov

Dustin Lyday, P.E. – Dustin.Lyday@txdot.gov

Contractor questions will be accepted through email, phone, and in person by the above individuals.

All contractor questions will be reviewed by the Engineer. Once a response is developed, it will be posted to TxDOT's Public FTP at the following Address:

https://ftp.dot.state.tx.us/pub/txdot-info/Pre-Letting_Responses/

All questions submitted that generate a response will be posted through this site. The site is organized by District, Project Type (Construction or Maintenance), Letting Date, CCSJ/Project Name.

TXDOT PROJECT SUPERVISOR – All work on this contract will be scheduled and directed by the following person. Payment will be made on a monthly basis for work completed and accepted according to specifications. All payment requests shall be directed to the same.

Clint Traylor, Hopkins County Maintenance Supervisor
1100 hillcrest Dr N
Sulphur Springs, TX 75482
(903) 885-3152
Fax: (903) 439-3622

Contract Prosecution: Each contract awarded by the Department stands on its own and as such, is separate from other contracts. A Contractor awarded multiple contracts, must be capable and sufficiently staffed to concurrently process any or all contracts at the same time.

ITEM 2 – INSTRUCTIONS TO BIDDERS

View plans on-line or download from the web at:

<http://www.txdot.gov/business/letting-bids/plans-online.html>

Order plans from any of the plan reproduction companies shown on the web at:

<http://www.txdot.gov/business/letting-bids/repro-companies.html>

Project Number: 6394-23-001

Control: 6394-23-001

County: HOPKINS

Highway: IH 30, etc.

ITEM 4 – SCOPE OF WORK

Repair damage caused by the Contractor's operations, to the highway right of way, signs, fences, delineators, plant materials or any other appurtenances, part of or adjacent to the highway facility. The Department has the authority to charge the Contractor for any damage not repaired.

ITEM 7 – LEGAL RELATIONS AND RESPONSIBILITIES

No significant traffic generator events identified.

ITEM 8 – PROSECUTION AND PROGRESS

Time will be computed according to Item 8.3.1.5.Calendar Day. Working days will be charged Sunday through Saturday, including all holidays, regardless of weather conditions, material availability, or other conditions not under the control of the contractor.

ITEM 502 – BARRICADES, SIGNS, AND TRAFFIC HANDLING

All traffic control shall be in accordance with the latest version of the most current Texas Manual on Uniform Traffic Control Devices. Traffic Control will be considered subsidiary to the various bid items. No more than one lane shall be blocked at any time on any highway.

Use only signs that are professionally built.

Comply with the respective signs and portable sign supports as shown on the RS-TCP-05 sheet.

The Contractor's personnel shall be dressed in approved safety attire while outside vehicles and/or while performing work on the highway right of way. For daytime and nighttime activity, flaggers shall wear high-visibility safety apparel that meets the Performance Class 2 or 3 requirements of the ANSI/ISEA 107-2004 publication entitled "American National Standard for High-Visibility Apparel and Headwear".

ITEM 751 – LANDSCAPE MAINTENANCE

This specification shall govern for janitorial and grounds maintenance of areas show in the plans. This includes removal and proper disposal of defined items of litter discarded, and mowing at historical markers, intersections and landscaped areas described in the plan packet and/or as directed by the engineer. Once work has begun on a cycle, it shall be continuously performed until all locations included in that cycle have been satisfactorily completed.

Grounds Maintenance

Pick up litter before mowing. Mow areas shown on the plans as directed. Do not damage trees or other vegetation. Replace vegetation damaged by improper operations. Edge sidewalks, arbor units, curbs, and concrete pavement. Trim around buildings, trees, shrubs, light poles, trash receptacles, sign post, guard post, delineator posts, culvert headwalls, ground lights, plant beds, and other appurtenances. Remove all dirt and trimmed vegetation from curbs, walks, slabs, and parking areas. Remove weeds, grass, and other

County: HOPKINS

Highway: IH 30, etc.

undesirable growth from plant beds and shrubs. Remove and dispose of clippings and cutting windrows and piles.

Mowing shall be performed on sites 1-5 as directed by the Engineer. Once work has begun on a cycle, it shall be continuously performed until all locations included in that cycle have been satisfactorily complete, unless weather prohibits work. Care shall be taken to weed eat all noxious grass around sidewalks. The Provider will be required to remove grass and weeds from raised beds at all parks and traffic islands.

The Provider shall provide all tools, equipment, supplies, safety materials and labor necessary to perform the work in a safe and orderly manner. Push-type mowers or hand-held trimmers may be required around trees, arbor units, and other fixtures. Mowing height shall be between 3" and 4". Have a minimum of 2 mowers and 2 weed eaters. The mower must be equipped with a minimum of a 60" mower deck. Tractor-driven mowers with mower width not to exceed 6 feet may be allowed but must produce a satisfactory appearance. Tractor size may not exceed 36 horsepower.

Perform grounds maintenance at sites 1, 2, and 3 carefully so as to prevent damage to the irrigation systems. Repair any damage to irrigation systems at no additional cost.

Litter Removal

Remove and dispose of litter twice a month, on the 2nd and 4th Monday at sites 1-5. One cycle of "Litter Pickup" consist of the satisfactory performance of the removal and disposal of litter at sites 1-5 combined.

Plant Bed Maintenance

A cycle of plant bed maintenance will be performed once per year at site 2 as directed by the engineer. Physically removed weeds and undesirable grasses, including their root system, from within plant beds. Trim ground covers and perform additional maintenance to plants within plant beds as directed by the engineer.

Pruning

Prune and trim shrubs, bushes, and trees. One cycle of "Tree pruning" consists of the satisfactory performance of Tree Pruning at sites 1-5 combined. The provider shall properly dispose of the bags in a location approved by the Engineer. Prune dead and undesirable growth from trees and shrubs, as needed or directed. Remove and dispose of tree clippings, limbs, leaves and pine needles as shown on the plans or as directed by the Engineer.



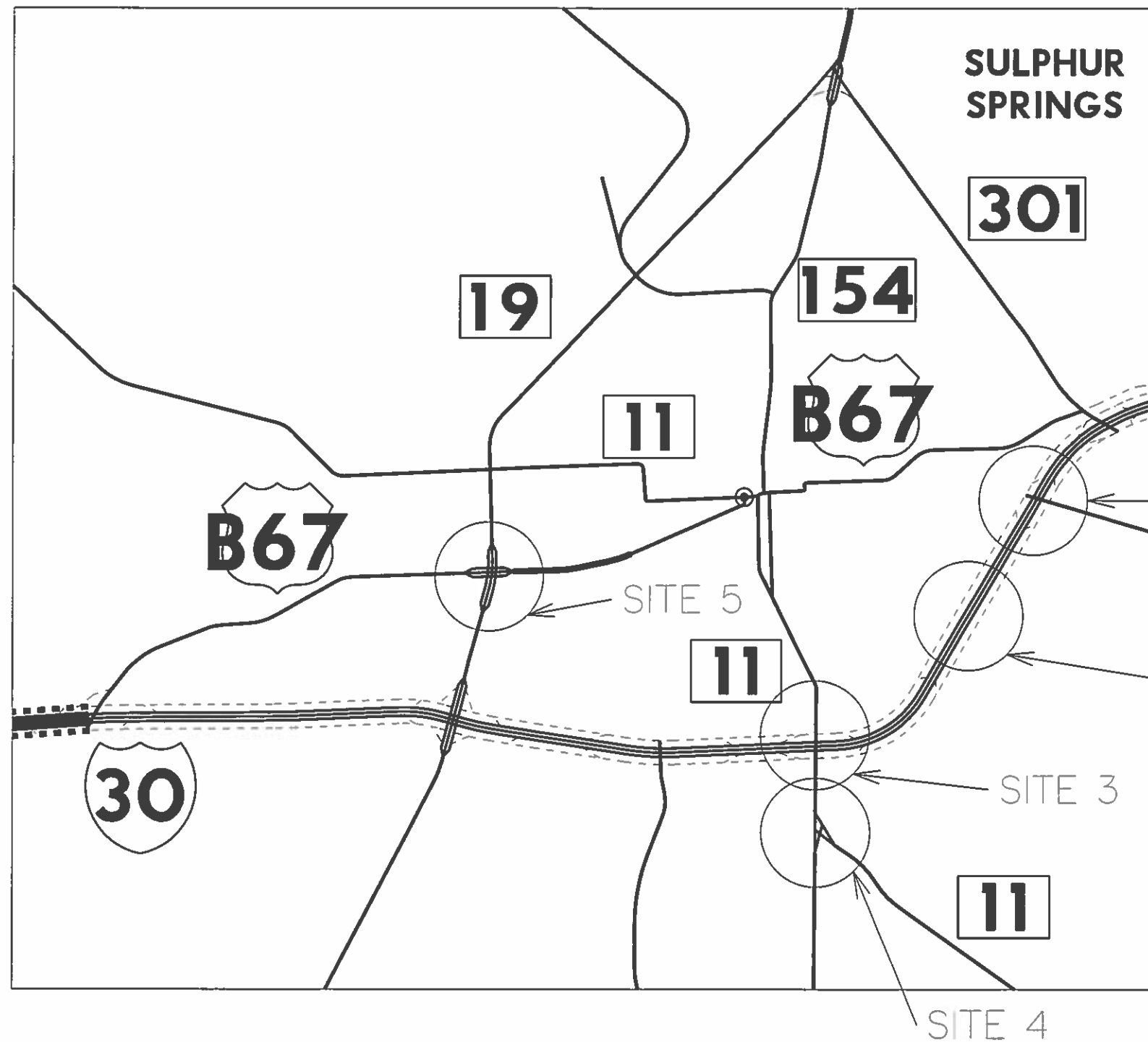
Estimate & Quantity Sheet

CONTROLLING PROJECT ID 6394-23-001

DISTRICT Paris
HIGHWAY IH0030

COUNTY Hopkins

CONTROL SECTION JOB				6394-23-001		TOTAL EST.	TOTAL FINAL
PROJECT ID				A00183289			
COUNTY				Hopkins			
HIGHWAY				IH0030			
ALT	BID CODE	DESCRIPTION	UNIT	EST.	FINAL		
	751-6006	LITTER PICKUP	CYC	24.000		24.000	
	751-6008	MOWING, TRIMMING, AND EDGING	CYC	18.000		18.000	
	751-6010	PLANT BED MAINTENANCE	CYC	1.000		1.000	
	751-6011	PRUNING	CYC	1.000		1.000	



SITE	HIGHWAY	LOCATION
1	IH 30 & FM 1870	THE INTERSECTION OF IH 30 AND FM 1870
2	IH 30 & BILL BRADFORD RD.	THE INTERSECTION OF IH 30 AND BILL BRADFORD
3	IH 30 & SH 154	THE INTERSECTION OF IH 30 AND SH 154
4	SH 154 & SH 11	THE INTERSECTION OF SH 154 AND SH 11
5	SH 19 & BUS. 67	THE INTERSECTION OF SH 19 AND BUS. 67

LOCATION MAP

FED. RD. DIV. NO.	PROJECT NO.		SHEET NO.
6	6394-23-001		4
STATE	DIST.	COUNTY	
TEXAS	01	HOPKINS	
CONT.	SECT.	JOB	HIGHWAY NO.
6394	23	001	IH 30, ETC.

LANDSCAPE MAINTENANCE						
SITE	HIGHWAY	LOCATION	751-6006	751-6008	751-6010	7004-6011
			LITTER PICKUP (SITES 1-5) 24 CYC	MOWING, TRIMMING, AND EDGING (SITES 1-5) 18 CYC	PLANT BED MAINTENANCE (SITE 2) 1 CYC	PRUNING TREES & SHRUBS (SITES 1-5) 1 CYC
1	IH 30 & FM 1870	THE INTERSECTION OF IH 30 AND FM 1870	X	X		X
2	IH 30 & BILL BRADFORD RD.	THE INTERSECTION OF IH 30 AND BILL BRADFORD	X	X	X	X
3	IH 30 & SH 154	THE INTERSECTION OF IH 30 AND SH 154	X	X		X
4	SH 154 & SH 11	THE INTERSECTION OF SH 154 AND SH 11	X	X		X
5	SH 19 & BUS. 67	THE INTERSECTION OF SH 19 AND BUS. 67	X	X		X



FED. RD. DIV. NO.	PROJECT NO.		SHEET NO.
6	6394-23-001		5
STATE	DIST.	COUNTY	
TEXAS	PAR	HOPKINS	
CONT.	SECT.	JOB	HIGHWAY NO.
6394	23	001	IH 30, ETC.

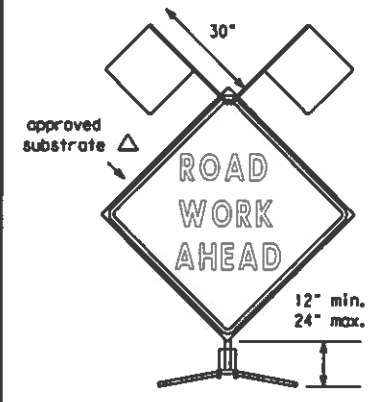
QUANTITY SUMMARY

DISCLAIMER
 The use of this standard is governed by the "Texas Engineering Practice Act". No warranty of any kind is made by TxDOT for any purpose whatsoever. TxDOT assumes no responsibility for the conversion of this standard to other formats or for incorrect results or damages resulting from its use.

LEVELS DISPLAYED
1
2
3
4
5
6
7
8
9
10
11
12
13
14
15
16
17
18
19
20
21
22
23
24
25
26
27
28
29
30
31
32
33
34
35
36
37
38
39
40
41
42
43
44
45
46
47
48
49
50
51
52
53
54
55
56
57
58
59
60
61
62
63

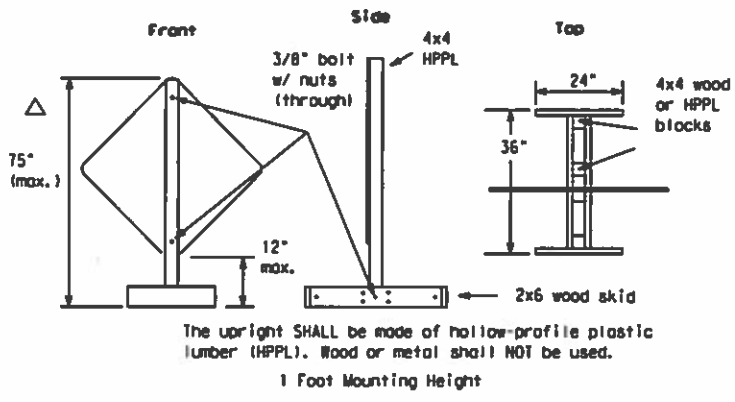
EXAMPLES OF SIGN SUPPORTS

See the CWZTCO for the type of sign substrate that can be used for each approved sign support.



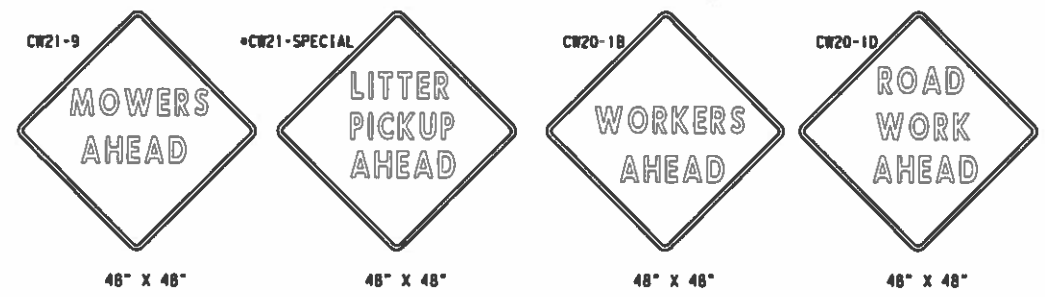
Flags as required by Engineer or as shown on plans

SHORT TERM DURATION, DAYTIME USE ONLY PORTABLE SIGN SUPPORTS



Attachment to wooden supports will be by bolts and nuts or screws. Use TxDOT's or manufacturer's recommended procedures for attaching sign substrates to other types of sign supports.

Nails will NOT be allowed.



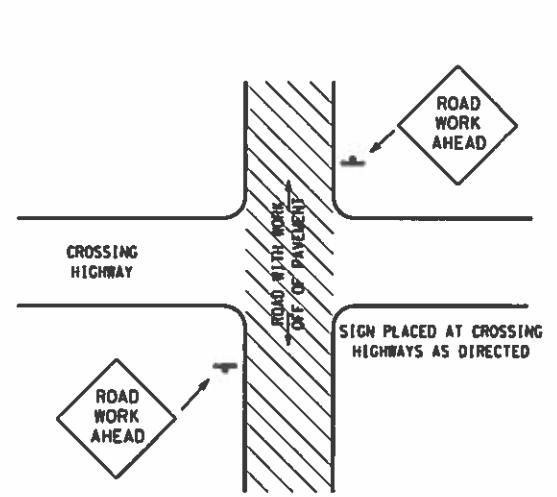
SIGN IN ACCORDANCE WITH THE TEXAS MANUAL ON UNIFORM TRAFFIC CONTROL DEVICES FOR STREETS AND HIGHWAYS

MOWERS AHEAD SIGNS ARE USED FOR MOWING OPERATIONS.

LITTER PICKUP AHEAD, ROAD WORK AHEAD AND WORKER AHEAD SIGNS ARE USED AS DIRECTED FOR OTHER MAINTENANCE OPERATIONS WHEN ALL WORK OCCURS OFF OF THE PAVED HIGHWAY SURFACE.

ROLL-UP SIGNS CONFORMING TO DMS-8310 AND THE CWZTCO ALLOWED

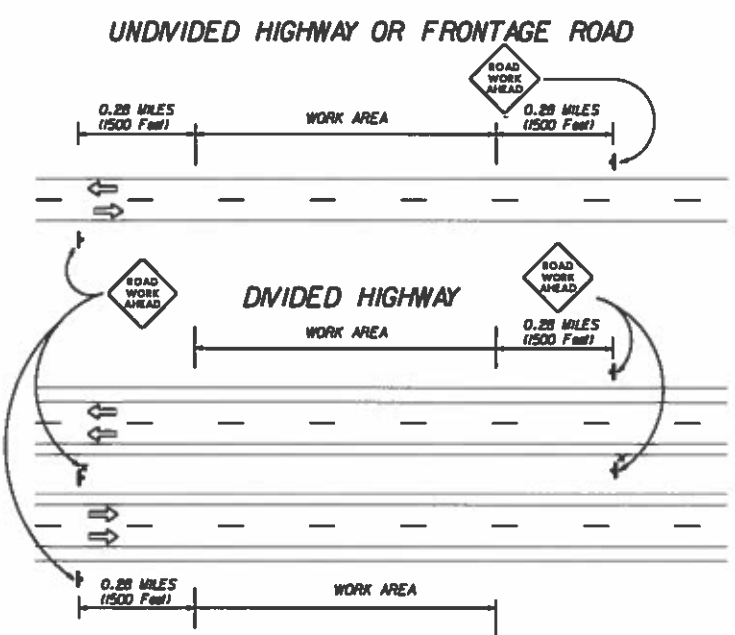
*Letter dimensions and spacing for "CW21-SPECIAL" is the same as C20-1D



TYPICAL LOCATION OF SIGNS AT HIGHWAY CROSSING

WORK AREA IS A MAXIMUM OF 2.0 MILES UNLESS OTHERWISE DIRECTED. SIGNS MAY REMAIN IN PLACE ONLY DURING DAYLIGHT HOURS. SIGNS ARE TO BE PLACED 6' TO 12' OFF OF THE PAVED SURFACE UNLESS OTHERWISE DIRECTED. ROAD WORK AHEAD SIGNS SHOWN AS EXAMPLES, ONE OF THE FOUR TYPE SIGNS WILL BE USED AS DIRECTED.

* SIGNS IN THE MEDIAN ARE REQUIRED WHEN WORK OCCURS IN MEDIAN



TRAFFIC CONTROL PLAN FOR WORK OFF OF THE PAVED SURFACE.

GENERAL NOTES FOR WORK ZONE SIGNS

- Contractor shall install and maintain signs in a straight and plumb condition and/or as directed by the Engineer.
 - Wooden sign posts shall be painted white.
 - Barricades shall NOT be used as sign supports.
 - Nails shall NOT be used to attach signs to any support.
 - All signs shall be installed in accordance with the plans or as directed by the Engineer. Signs shall be used to regulate, warn, and guide the traveling public safely through the work zone.
 - The Contractor may furnish either the sign design shown in the plans or in the "Standard Highway Sign Designs for Texas" (SHSD). The Engineer/Inspector may require the Contractor to furnish other work zone signs that are shown in the TMLTCD but may have been omitted from the plans. Any variation in the plans shall be documented by written agreement between the Engineer and the Contractor's Responsible Person. All changes must be documented in writing before being implemented. This can include documenting the changes in the Inspector's TxDOT diary and having both the Inspector and Contractor initial and date the agreed upon changes. The additional signs requested by the Engineer/Inspector shall not be subsidiary.
 - The Contractor shall furnish sign supports listed in the "Compliant Work Zone Traffic Control Device List" (CWZTCO). The Contractor shall install the sign support in accordance with the manufacturer's recommendations. If there is a question regarding installation procedures, the Contractor shall furnish the Engineer a copy of the manufacturer's installation recommendations so that the Engineer can verify the correct procedures are being followed.
 - The Contractor is responsible for sign installations and replacing signs with damaged or cracked substrates and/or damaged or marred reflective sheeting as directed by the Engineer/Inspector.
 - Identification markings may be shown only on the back of the sign substrate. The maximum height of letters and/or company logos used for identification shall be 1".
 - The Contractor shall replace damaged wood posts. New or damaged wood sign posts shall not be spliced.
- Duration of Work (as defined by the "Texas Manual on Uniform Traffic Control Devices" Part VI)
- The Contractor is responsible for ensuring the sign support and substrate meets crashworthiness. For mowing operation all signs and supports are Short-term Duration for daytime work.
 - The Contractor shall furnish the sign sizes shown on this sheet or as directed by the Engineer.

SIGN SUBSTRATES

- The Contractor shall ensure that the sign substrate is allowed for the type of sign support that is being used. The CWZTCO lists each substrate that can be used on the different types and models of sign supports.
- "Mesh" type materials are NOT an approved sign substrate.
- All wooden individual sign panels fabricated from 2 or more pieces shall have one or more plywood cleat, 1/2" thick by 6" wide, fastened to the back of the sign and extending fully across the sign. The cleat shall be attached to the back of the sign using wood screws that do not penetrate the face of the sign panel. The screws shall be placed on both sides of the splice and spaced at 6" centers. The Engineer may approve other methods of splicing the sign faces.

REFLECTIVE SHEETING

- Reflectorized signs shall be constructed of sheeting meeting the color and retro-reflectivity requirements of DMS-8300 or DMS-8310. The DMS specifications can be accessed from the following web address: http://manuals.dot.state.tx.us:80/dynweb/colmatex/#Generic_CollectionViewjcs=default;ts=default
- White sheeting, meeting the requirements of DMS-8300 Type C (High Specific Intensity), shall be used for signs with white background and channelizing devices.
- Orange sheeting, meeting the requirements of DMS-8300 Type E (Fluorescent Prismatic), shall be used for signs with orange backgrounds.

SIGN LETTERS

- All sign letters and numbers shall be clear, and open rounded type uppercase alphabet letters as approved by the Federal Highway Administration (FHWA) and as published in the "Standard Highway Sign Design for Texas" manual. Signs, letters and numbers shall be of first class workmanship in accordance with Department Standards and Specifications.

REMOVING OR COVERING

- Signs should be removed or completely covered when not mowing.
- Duct tape or other adhesive material shall NOT be affixed to a sign face.
- Signs and supports shall be removed by the end of the day.

SIGN SUPPORT WEIGHTS

- Where sign supports require the use of weights to keep from turning over, the use of sandbags with dry cohesionless sand is recommended.
- The sandbags will be tied shut to keep the sand from spilling and to maintain a constant weight.
- Rock, concrete, iron, steel or other solid objects will not be permitted for use as sign support weights.
- Sandbags should weigh a minimum of 35 lbs and a maximum of 50 lbs.
- Sandbags should be made of a durable material that tears upon vehicular impact.
- Rubber (such as tire inner tubes) shall NOT be used for sandbags.
- Rubber ballasts (such as those used with cones or edgeline channelizers) shall NOT be used as sign support weights.
- Sandbags shall only be placed along or laid over the base supports of the traffic control device and shall not be suspended above ground level or hung with rope, wire, chains or other fasteners. Sandbags shall be placed along the length of the skids to weigh down the sign supports.
- Sandbags shall NOT be placed under the skid and shall not be used to level sign supports placed on slopes.

CONTRACTOR REQUIREMENTS FOR MAINTAINING PERMANENT SIGNS WITHIN THE PROJECT LIMITS

Any sign, sign support or traffic control device that is struck or damaged by the Contractor or his/her construction equipment shall be replaced or repaired as soon as possible by the Contractor at the Contractor's expense.

Only pre-qualified products shall be used. A copy of the "Compliant Work Zone Traffic Control Devices List" (CWZTCO) describes pre-qualified products and their sources and may be obtained by contacting:

Standards Engineer
 Traffic Operations Division - TE
 Texas Department of Transportation
 125 East 11th Street
 Austin, Texas 78701-2483
 Phone (512) 416-3120
 Fax (512) 416-3299

Instructions to locate the "CWZTCO" on TxDOT website are:

Start at website - www.dot.state.tx.us
 Click on "About TxDOT",
 Click on "Organizational Chart",
 Click on "Traffic Operations Box",
 Click on "Compliant Work Zone Traffic Control Devices",
 Click on "View PDF".
 This site is printable.

Texas Department of Transportation
 Maintenance Division
 Standard Plans

ROADSIDE TRAFFIC CONTROL PLAN

SHEET 1 OF 1 RS-TCP-05 NOT TO SCALE

FILE: RSTCPO5.DGN	DR: LJB	EXT: JG	DR:	EXT:	REC NO.:
© TxDOT FEBRUARY 2005		STATE DISTRICT: PARIS	FEDERAL REGION: 6	FEDERAL AID PROJECT: 6394-23-001	
REVISED: SEPTEMBER 17, 2004					SHEET: 6
REVISED: FEBRUARY 2, 2005		COUNTY: HOPKINS	CONTROL SECTION: 58	JOB: 001	W/DRWT: ETC
REVISED: Sign placement in TCP					