

Project Number: RMC 6392-72-001

County: Delta, ETC.

Control: 6392-72-001

Highway: SH 24, ETC.

GENERAL NOTES:

PROJECT DESCRIPTION: This project consists of mowing roadside vegetation on various highways in Delta and Lamar Counties as denoted on the location map.

Use batwing rotary mowers with deflection devices.

The Department will inspect equipment to ensure that all mowers are adjusted properly for the correct mowing height and meet all safety requirements prior to beginning mowing operations and at any time during the contract period.

Contractor questions on this project are to be addressed to the following individual(s):

Paris Area Office

Daniel Taylor, P.E. – Daniel.Taylor@txdot.gov

Contractor questions will be accepted through email, phone, and in person by the above individuals.

All contractor questions will be reviewed by the Engineer. Once a response is developed, it will be posted to TxDOT's Public FTP at the following Address: <https://ftp.dot.state.tx.us/pub/txdot-info/Pre-Letting Responses/>

All questions submitted that generate a response will be posted through this site. The site is organized by District, Project Type (Construction or Maintenance), Letting Date, CCSJ/Project Name.

Contact the project supervisor for any questions concerning locations of non-mow areas.

TXDOT PROJECT SUPERVISOR: All work on this contract will be scheduled and directed by the following person. Payment will be made on a monthly basis for work completed and accepted according to specifications. All payment requests should be directed to the same.

David Escobedo, Maintenance Section Supervisor
131 Hwy 64
Cooper, TX 75432
Phone: (903)395-2139

Contract Prosecution: Each contract awarded by the Department stands on its own and, as such, is separate from other contracts. A Contractor awarded multiple contracts must be capable and sufficiently staffed to concurrently prosecute all contracts at the same time.

Project Number: RMC 6392-72-001

County: Delta, ETC.

Control: 6392-72-001

Highway: SH 24, ETC.

ITEM 2: INSTRUCTIONS TO BIDDERS

View plans on-line or download from the web at:

<http://www.txdot.gov/business/letting-bids/plans-online.html>

Order plans from any of the plan reproduction companies shown on the web at:

<http://www.txdot.gov/business/letting-bids/repro-companies.html>

ITEM 5: CONTROL OF THE WORK

Utilize a crew experienced in the work of mowing roadside vegetation.

ITEM 7: LEGAL RELATIONS AND RESPONSIBILITIES

Repair damage caused by the Contractor's operations to the highway right of way, signs, fences, delineators, plant materials or any other appurtenances, part of or adjacent to the highway facility. Report such damages to the Department at the time of occurrence.

When damage is of the nature that the repair can be made by the Contractor, the Contractor is to, at his own expense, repair the damage to the Department's satisfaction. This would include straightening all signs, delineators, etc., knocked out of plumb. Unless otherwise reported to the inspector before work begins, it is assumed that all signs, mailbox posts, delineators, etc. are plumb.

When damage is of the nature that the repair must be made by the Department, such as damage to signals, school zone assemblies, etc., a detailed and accurate estimate of the Department's cost to repair the damage will be given to the Contractor in writing as soon as possible after the damage occurs, and a deduction for the estimated cost will be made from the payment estimate during the month in which the damage occurred. When actual repairs are completed and actual cost is determined an adjustment will be made, if necessary, during the monthly payment estimate in the month when repairs are completed by the Department. Repairs by the Department and settlement of actual cost will be done as soon as possible.

When damage is of the nature that a sign, delineator, mailbox post, or other Department property must be replaced by the Department, a deduction for the cost of replacement will be made from the payment estimate during the month in which the damage occurred. Replacement costs will be charged in accordance with the Replacement Cost Estimating Document prepared by the Traffic Operations Division, dated 9-2015, and included in the plans.

Replace damaged mailboxes, at the Contractor's expense, with ones of equal or better quality than the ones damaged.

There are no significant traffic generator events identified.

Project Number: RMC 6392-72-001

County: Delta, ETC.

Control: 6392-72-001

Highway: SH 24, ETC.

ITEM 8: PROSECUTION AND PROGRESS

The Engineer will authorize the first cycle to begin June 1. Time charges will begin when work begins or on the 7th calendar day following the authorization date if no work has begun.

Begin the second cycle within seven days of the authorization date to begin work.

The Department will issue a written notice to begin a roadside mowing cycle. The notice will include the number of acres to be mowed, the number of working days allowed to complete the cycle, and the date when time charges for the cycle will start. The number of working days will be determined by dividing the total number of acres required for the cycle by the daily average rate to be mowed.

Time will be computed according to Item 8.3.1.6, Other.

Working days will be charged Monday through Friday, excluding national holidays, if weather or other conditions permit the performance of the principle unit of work underway, as determined by the Engineer, for a continuous period of at least 7 hr. between 7:00 A.M. and 6:00 P.M., unless otherwise shown in the Contract. The Contractor has the option of working on Saturdays or state holidays. Provide sufficient advance notice to the Engineer when scheduling work on Saturdays or state holidays. Work on Sundays and national holidays will not be permitted without written permission of the Engineer. If work requiring an Inspector to be present is performed on a Saturday, Sunday, or any holiday, and weather or other conditions permit the performance of work of 7 hr. between 7:00 A.M. and 6:00 P.M., a working day will be charged.

In reference to Item 8.3.2. Restricted Work Hours, mowing operations will not begin until thirty minutes after sunrise and will end thirty minutes before sunset.

Liquidated damages, as set forth in Special Provision 000-658 shall be assessed if work is not completed within the specified number of working days per cycle.

If the total number of working days is not used during the completion of a cycle, the working days will not be carried forward to a subsequent cycle.

ITEM 500: MOBILIZATION

One callout mobilization will be paid for each full width mowing cycle and for each work order for spot mowing. A work order may include multiple locations.

Project Number: RMC 6392-72-001

County: Delta, ETC.

Control: 6392-72-001

Highway: SH 24, ETC.

ITEM 502: BARRICADES, SIGNS, AND TRAFFIC HANDLING

All traffic control shall be in accordance with the "Texas Manual on Uniform Traffic Control Devices" (TMUTCD). Traffic Control will be considered subsidiary to the various bid items. No more than one lane shall be blocked at any time on any highway.

Use only signs that are professionally built.

Comply with the respective signs and portable sign supports as shown on the Roadside Traffic Control Plan Sheet.

ITEM 730: ROADSIDE MOWING

Full-Width Mowing –

The Contractor shall be responsible for removing and replacing guardrail, posts, bolts, nuts, etc, in those areas where entry cannot be made in any other way.

Mow a minimum of 125 acres per day.

Hand trim all sloped areas that are 3:1 ratio or steeper.

Hand trimming shall be cut to approximately four inches (4").

Use of all-terrain vehicles (ATV's) are allowed for hand trimming.

Follow the Texas Traffic Law, Transportation Code (TRC 663.037) on all-terrain vehicles.

Mowers will not be allowed to cross the Trail de Paris walking track located at the interchange of Loop 286 and US 271 South, unless authorized by the Engineer.

Center Median on North Loop 286 from US 82 West to US 271 South interchange will not be mowed.

Spot Mowing -

Work requests are made on a callout basis. The minimum quantity per callout is three acres. If a weather event prevents a full seven hour work day, the day will be credited appropriately and the work must be done on the very next working day weather will permit.

Work must begin in the morning on one of the next two working days following notification. The seven day grace period from time charges does not apply to Spot Mowing callouts. Ten working days are set up in this contract to cover Spot Mowing.



Estimate & Quantity Sheet

CONTROLLING PROJECT ID 6392-72-001

DISTRICT Paris
HIGHWAY SH0024

COUNTY Delta


CONTROL SECTION JOB				6392-72-001		TOTAL EST.	TOTAL FINAL
PROJECT ID				A00182813			
COUNTY				Delta			
HIGHWAY				SH0024			
ALT	BID CODE	DESCRIPTION	UNIT	EST.	FINAL		
	500-6033	MOBILIZATION (CALLOUT)	EA	3.000		3.000	
	730-6002	FULL - WIDTH MOWING	AC	4,388.000		4,388.000	
	730-6003	SPOT MOWING	AC	50.000		50.000	

SUMMARY OF MOWING

Tract No.	Highway	Limits	Ref. Marker	Length Miles	ITEM 730-6002 FULL WIDTH MOWING			
					No. of Full Width Mowing Cycles	Acres Per One Full Width Mowing Cycle	Total Acres Full Width Mowing	No. of Working Days Per Cycle
1	SH 24	From: SH 19 To: FM 64 Cooper	218 225	7.51	2	138	276	1.104
2	SH 24	From: FM 64 (Cooper) To: Hunt County Line	225 237	10.87	2	200	400	1.600
3	SH 19	From: Lamar County Line To: Hopkins County Line	216 225	9.02	2	131	262	1.048
4	SH 154	From: Curb & Gutter, Cooper To: SH 19	648 653	4.29	2	42	84	0.336
5	BS 24D	From: SH 24 To: SH 24 (Cooper)	648 650	1.43	2	10	20	0.080
6	FM 904	From: FM 64 To: SH 24	218 228	9.88	2	89	178	0.712
7	FM 198	From: FM 128 To: FM 895	648 662	13.30	2	97	194	0.776
8	FM 895	From: SH 19 To: End of Project	654 667	12.68	2	146	292	1.168
9	FM 1335	From: SH 19 & 24 To: FM 198	216 217	0.81	2	5	10	0.040
10	FM 1529	From: End of Project To: SH 19	650 656	5.53	2	46	92	0.368
11	FM 2716	From: SH 24 To: FM 1529	220 223	1.37	2	14	28	0.112
12	FM 1528	From: FM 64 To: SH 24	644 649	6.09	2	42	84	0.336
13	FM 1528	From: SH 24 To: SH 154	649 656	5.03	2	35	70	0.280
14	FM 1880	From: FM 1528 To: End of Project	224 226	1.18	2	12	24	0.096

DATE: 08/02/2011 08:54 AM
FILE: TxDOT_Sheets_XM.cel

SHEET 1 OF 3



CONTRACT	SECTION	JOB	HIGHWAY
6392	72	001	SH 24, ETC.
DIST	COUNTY	SHEET NO.	
PAR	DELTA, ETC.	5	


QUANTITY SUMMARY

SUMMARY OF MOWING

Tract No.	Highway	Limits	Ref. Marker	Length Miles	ITEM 730-6002 FULL WIDTH MOWING			
					No. of Full Width Mowing Cycles	Acres Per One Full Width Mowing Cycle	Total Acres Full Width Mowing	No. of Working Days Per Cycle
15	FM 2068	From: FM 904 To: FM 1528	640 644	3.48	2	52	104	0.416
16	FM 2890	From: SH 24 To: FM 1528	644 646	1.49	2	15	30	0.120
17	FM 71	From: Hunt County Line To: Hopkins County Line	642 647	4.41	2	40	80	0.320
18	FM 1531	From: SH 24 To: FM 71	228 233	4.23	2	40	80	0.320
19	FM 3132	From: FM 904 To: SH 24	226 229	2.73	2	20	40	0.160
20	FM 64	From: Fannin County Line To: BS 24D (Cooper)	640 654	13.42	2	92	184	0.736
21	FM 1532	From: FM 904 To: FM 64	642 645	2.61	2	27	54	0.216
22	FM 1530	From: FM 128 To: FM 64	216 225	8.70	2	68	136	0.544
23	FM 1533	From: FM 128 To: FM 1530	216 220	3.73	2	27	54	0.216
24	FM 3388	From: FM 1530 To: FM 64	220 223	2.92	2	32	64	0.256
25	FM 38	From: Lamar County Line To: FM 128	238 240	1.49	2	7	14	0.056
26	FM 128	From: FM 64 To: SH 24	640 657	16.28	2	86	172	0.688
27	FM 1742	From: End of Project To: FM 198	214 217	2.49	2	25	50	0.200
28	FM 2675	From: Lamar County Line To: FM 128	218 221	2.30	2	25	50	0.200

DATE: 05/02/2011 08:54 AM
FILE: TxDOT_Sheets.XM.cpl

SHEET 2 OF 3



CDMT	SECT	JOB	HIGHWAY
6392	72	001	SH 24, ETC.
DIST	COUNTY	SHEET NO.	
PAR	DELTA, ETC.	6	

QUANTITY SUMMARY


SUMMARY OF MOWING

Tract No.	Highway	Limits	Ref. Marker	Length Miles	ITEM 730-6002 FULL WIDTH MOWING			
					No. of Full Width Mowing Cycles	Acres Per One Full Width Mowing Cycle	Total Acres Full Width Mowing	No. of Working Days Per Cycle
29	FM 2949	From: FM 128 To: SH 24	216 223	5.90	2	56	112	0.448
30	FM 2675	From: FM 137 To: Delta County Line	212 217	4.60	2	46	92	0.368
31	FM 38	From: US 82 To: Delta County Line	224 238	13.10	2	100	200	0.800
32	FM 2122	From: FM 1506 To: FM 137	206 211	4.90	2	52	104	0.416
33	FM 1506	From: FM 38 To: FM 137	646 653	6.90	2	62	124	0.496
34	FM 1509	From: FM 137 To: FM 38	642 648	5.60	2	42	84	0.336
35	FM 137	From: Loop 286 To: US 82 West	203 227	23.10	2	183	366	1.464
36	FM 824	From: Fannin County Line To: FM 137	208 215	6.50	2	51	102	0.408
37	FM 1184	From: FM 137 To: SH 19	652 656	4.38	2	27	54	0.216
38	FM 2036	From: FM 137 To: SH 19	654 656	1.30	2	12	24	0.096
TOTAL TRACT 1 THROUGH 38				235.55		2194	4388	18

Working days figured on 125 acres per day.

Summary of Working Days:

First Cycle Mowing Tracts 1-38:	18
Second Cycle Mowing Tracts 1-38:	18
Days Allowed for Spot Mowing:	10
Total Working Days:	<u>46</u>



COMT	SECT	JOB	HIGHWAY
6392	72	001	SH 24, ETC.
DIST	COUNTY	SHEET NO.	
PAR	DELTA, ETC.	7	

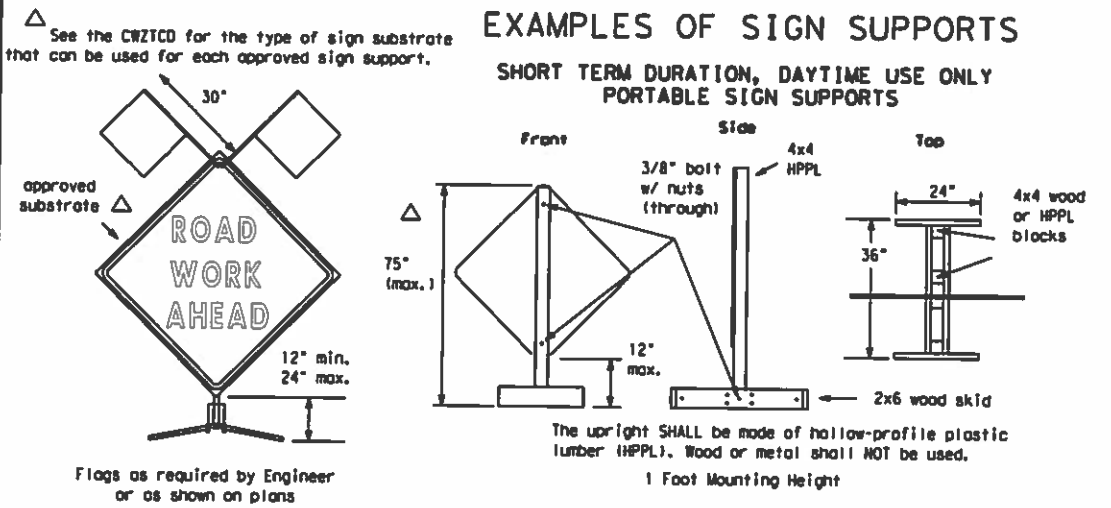
QUANTITY SUMMARY

DISCLAIMER

The use of this standard is governed by the "Texas Engineering Practice Act". No warranty of any kind is made by TxDOT for any purpose whatsoever. TxDOT assumes no responsibility for the conversion of this standard to other formats or for incorrect results or damages resulting from its use.

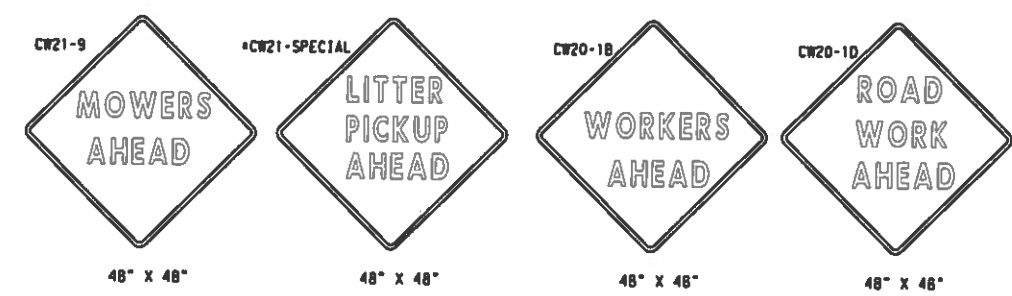
1	2	3	4	5	6	7	8	9	10	11	12	13	14	15	16
17	18	19	20	21	22	23	24	25	26	27	28	29	30	31	32
33	34	35	36	37	38	39	40	41	42	43	44	45	46	47	48
49	50	51	52	53	54	55	56	57	58	59	60	61	62	63	

EXAMPLES OF SIGN SUPPORTS



Attachment to wooden supports will be by bolts and nuts or screws. Use TxDOT's or manufacturer's recommended procedures for attaching sign substrates to other types of sign supports.

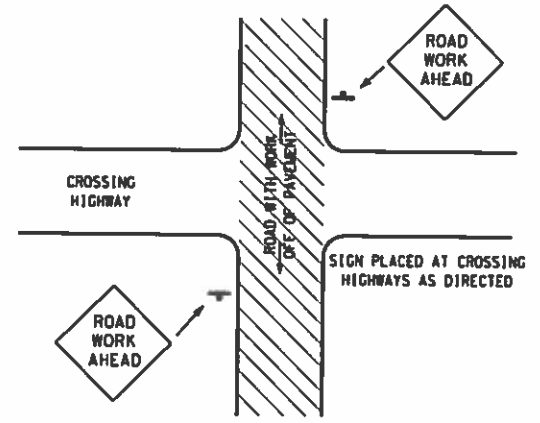
Nails will NOT be allowed.



SIGN IN ACCORDANCE WITH THE TEXAS MANUAL ON UNIFORM TRAFFIC CONTROL DEVICES FOR STREETS AND HIGHWAYS
MOWERS AHEAD SIGNS ARE USED FOR MOWING OPERATIONS.
LITTER PICKUP AHEAD, ROAD WORK AHEAD AND WORKER AHEAD SIGNS ARE USED AS DIRECTED FOR OTHER MAINTENANCE OPERATIONS WHEN ALL WORK OCCURS OFF OF THE PAVED HIGHWAY SURFACE.

ROLL-UP SIGNS CONFORMING TO DMS-8310 AND THE CWZTCO ALLOWED

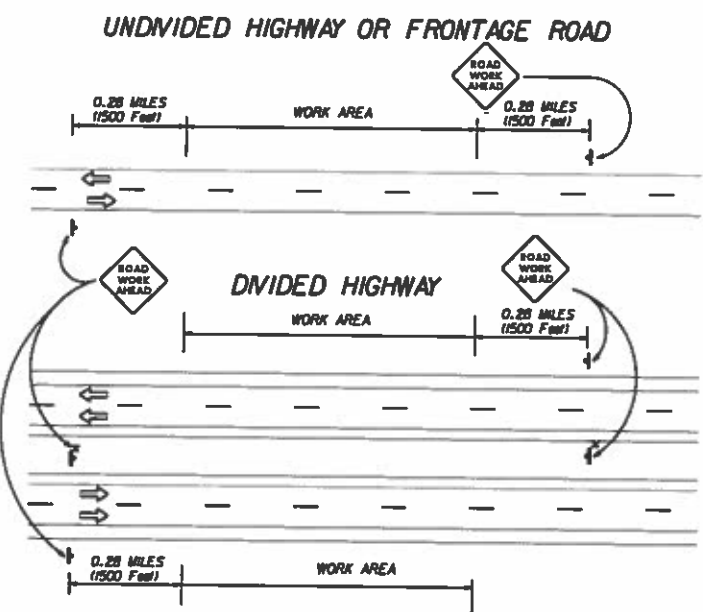
*Letter dimensions and spacing for "CW21-SPECIAL" is the same as C20-1D



TYPICAL LOCATION OF SIGNS AT HIGHWAY CROSSING

WORK AREA IS A MAXIMUM OF 2.0 MILES UNLESS OTHERWISE DIRECTED. SIGNS MAY REMAIN IN PLACE ONLY DURING DAYLIGHT HOURS. SIGNS ARE TO BE PLACED 6 TO 12' OFF OF THE PAVED SURFACE UNLESS OTHERWISE DIRECTED. ROAD WORK AHEAD SIGNS SHOWN AS EXAMPLES. ONE OF THE FOUR TYPE SIGNS WILL BE USED AS DIRECTED.

* SIGNS IN THE MEDIAN ARE REQUIRED WHEN WORK OCCURS IN MEDIAN



TRAFFIC CONTROL PLAN FOR WORK OFF OF THE PAVED SURFACE.

GENERAL NOTES FOR WORK ZONE SIGNS

- Contractor shall install and maintain signs in a straight and plumb condition and/or as directed by the Engineer.
- Wooden sign posts shall be painted white.
- Barricades shall NOT be used as sign supports.
- Nails shall NOT be used to attach signs to any support.
- All signs shall be installed in accordance with the plans or as directed by the Engineer. Signs shall be used to regulate, warn, and guide the traveling public safely through the work zone.
- The Contractor may furnish either the sign design shown in the plans or in the "Standard Highway Sign Designs for Texas" (SHSD). The Engineer/Inspector may require the Contractor to furnish other work zone signs that are shown in the TxDOT but may have been omitted from the plans. Any variation in the plans shall be documented by written agreement between the Engineer and the Contractor's Responsible Person. All changes must be documented in writing before being implemented. This can include documenting the changes in the Inspector's TxDOT diary and having both the Inspector and Contractor initial and date the agreed upon changes. The additional signs requested by the Engineer/Inspector shall not be subsidiary.
- The Contractor shall furnish sign supports listed in the "Compliant Work Zone Traffic Control Device List" (CWZTCO). The Contractor shall install the sign support in accordance with the manufacturer's recommendations. If there is a question regarding installation procedures, the Contractor shall furnish the Engineer a copy of the manufacturer's installation recommendations so that the Engineer can verify the correct procedures are being followed.
- The Contractor is responsible for sign installations and replacing signs with damaged or cracked substrates and/or damaged or marred reflective sheeting as directed by the Engineer/Inspector.
- Identification markings may be shown only on the back of the sign substrate. The maximum height of letters and/or company logos used for identification shall be 1".
- The Contractor shall replace damaged wood posts. New or damaged wood sign posts shall not be spliced.

Duration of Work (as defined by the "Texas Manual on Uniform Traffic Control Devices" Part V)

- The Contractor is responsible for ensuring the sign support and substrate meets crashworthiness. For mowing operation all signs and supports are Short-term Duration for daytime work.
- The Contractor shall furnish the sign sizes shown on this sheet or as directed by the Engineer.

SIGN SUBSTRATES

- The Contractor shall ensure that the sign substrate is allowed for the type of sign support that is being used. The CWZTCO lists each substrate that can be used on the different types and models of sign supports.
- "Mesh" type materials are NOT an approved sign substrate.
- All wooden individual sign panels fabricated from 2 or more pieces shall have one or more plywood cleat, 1/2" thick by 6" wide, fastened to the back of the sign and extending fully across the sign. The cleat shall be attached to the back of the sign using wood screws that do not penetrate the face of the sign panel. The screws shall be placed on both sides of the splice and spaced at 6" centers. The Engineer may approve other methods of splicing the sign faces.

REFLECTIVE SHEETING

- ReflectORIZED signs shall be constructed of sheeting meeting the color and retro-reflectivity requirements of DMS-8300 or DMS-8310. The DMS specifications can be accessed from the following web address: http://manuals.dot.state.tx.us:80/dynweb/colmates@Generic_CollectionView;ca=default;ts=default
- White sheeting, meeting the requirements of DMS-8300 Type C (High Specific Intensity), shall be used for signs with white background and channelizing devices.
- Orange sheeting, meeting the requirements of DMS-8300 Type E (Fluorescent Prismatic), shall be used for signs with orange backgrounds.

SIGN LETTERS

- All sign letters and numbers shall be clear, and open rounded type uppercase alphabet letters as approved by the Federal Highway Administration (FHWA) and as published in the "Standard Highway Sign Design for Texas" manual. Signs, letters and numbers shall be of first class workmanship in accordance with Department Standards and Specifications.

REMOVING OR COVERING

- Signs should be removed or completely covered when not mowing.
- Duct tape or other adhesive material shall NOT be affixed to a sign face.
- Signs and supports shall be removed by the end of the day.

SIGN SUPPORT WEIGHTS

- Where sign supports require the use of weights to keep from turning over, the use of sandbags with dry cohesionless sand is recommended.
- The sandbags will be tied shut to keep the sand from spilling and to maintain a constant weight.
- Rock, concrete, iron, steel or other solid objects will not be permitted for use as sign support weights.
- Sandbags should weigh a minimum of 35 lbs and a maximum of 50 lbs.
- Sandbags shall be made of a durable material that tears upon vehicular impact.
- Rubber (such as tire inner tubes) shall NOT be used for sandbags.
- Rubber ballasts (such as those used with cones or edgeline channelizers) shall NOT be used as sign support weights.
- Sandbags shall only be placed along or laid over the base supports of the traffic control device and shall not be suspended above ground level or hung with rope, wire, chains or other fasteners. Sandbags shall be placed along the length of the skids to weigh down the sign supports.
- Sandbags shall NOT be placed under the skid and shall not be used to level sign supports placed on slopes.

CONTRACTOR REQUIREMENTS FOR MAINTAINING PERMANENT SIGNS WITHIN THE PROJECT LIMITS

Any sign, sign support or traffic control device that is struck or damaged by the Contractor or his/her construction equipment shall be replaced or repaired as soon as possible by the Contractor at the Contractor's expense.

Only pre-qualified products shall be used. A copy of the "Compliant Work Zone Traffic Control Devices List" (CWZTCO) describes pre-qualified products and their sources and may be obtained by contacting:

Standards Engineer
 Traffic Operations Division - TE
 Texas Department of Transportation
 125 East 11th Street
 Austin, Texas 78701-2483
 Phone (512) 416-3120
 Fax (512) 416-3299

Instructions to locate the "CWZTCO" on TxDOT website are:

Start at website - www.dot.state.tx.us
 Click on "About TxDOT",
 Click on "Organizational Chart",
 Click on "Traffic Operations Box",
 Click on "Compliant Work Zone Traffic Control Devices",
 Click on "View PDF".
 This site is printable.

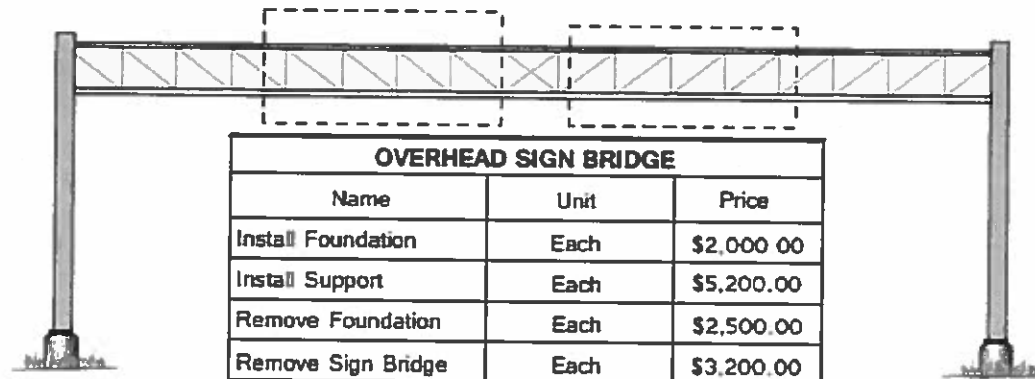
Texas Department of Transportation
 Maintenance Division
 Standard Plans

ROADSIDE TRAFFIC CONTROL PLAN

SHEET 1 OF 1 **RS-TCP-05** NOT TO SCALE

FILE#	RSTCP05.DGN	DRN	LJB	DRN	JG	DRN	CEL	REG NO.
REVISED	FEBRUARY 2005	STATE DISTRICT	PAR	FEDERAL REGION	6	MAINTENANCE PROJECT	RMC 6392-72-001	SHEET 8
REVISED	SEPTEMBER 11, 2004	COUNTY	DELTA, ETC.	CONTROL SECTION	6392 72	JOB	001	ROADWAY SH 24, ETC

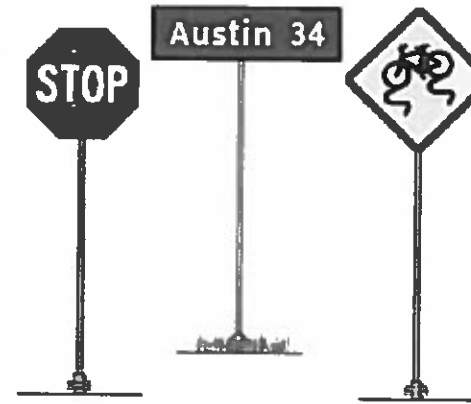
SIGNS



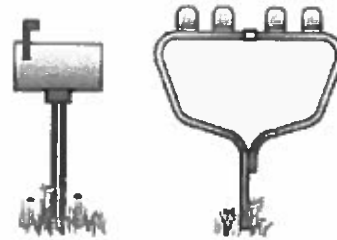
OVERHEAD SIGN BRIDGE		
Name	Unit	Price
Install Foundation	Each	\$2,000.00
Install Support	Each	\$5,200.00
Remove Foundation	Each	\$2,500.00
Remove Sign Bridge	Each	\$3,200.00
Remove Support	Each	\$7,500.00
Steel Truss	per foot of span	\$400.00



LARGE GUIDE SIGNS		
Name	Unit	Price
Foundation	Each	\$850.00
Sign	Per Sq. Ft.	\$25.00
Support	Each	\$1,375.00



SMALL SIGNS		
Name	Unit	Price
Sign	Each	\$700.00



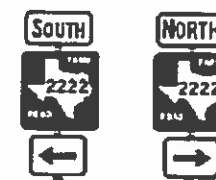
MAIL BOX SUPPORTS	
Name	Price (Each)
Single	\$165.00
Double	\$200.00
Multi-Support	\$500.00



OBJECT MARKER	
Unit	Price
Each	\$300.00




DELINEATOR/ OBJECT MARKER	
Unit	Price
Each	\$100.00



MULTI-SIGN MOUNT		
Name	Unit	Price
Sign	Each	\$900.00

**REPLACEMENT
COST
ESTIMATING
DOCUMENT**



CONTRACT NO.	SECTION	JOB NO.	HIGHWAY
6392	72	001	SH 24, ETC.
DISTRICT	COUNTY	SHEET NO.	
PAR	DELTA, ETC.	9	