

GRAPHICS FILE		MAINTENANCE PROJECT NO.		SHEET NO.
Title-MNT.dgn		6390-27-001		1
CHECKED	STATE	STATE DIST.	COUNTY	
	TEXAS	08	HASKELL	
CHECKED	CONT.	SECT.	JOB	HIGHWAY NO.
	6390	27	001	US380, ETC.

# INDEX OF SHEETS

SHEET NO.	DESCRIPTION
1	Title Sheet
2 - 3	General Notes
4	Estimate & Quantity
5	#RS-TCP-05

#TxDOT Standards

## STATE OF TEXAS DEPARTMENT OF TRANSPORTATION

### PLANS OF PROPOSED HIGHWAY ROUTINE MAINTENANCE CONTRACT

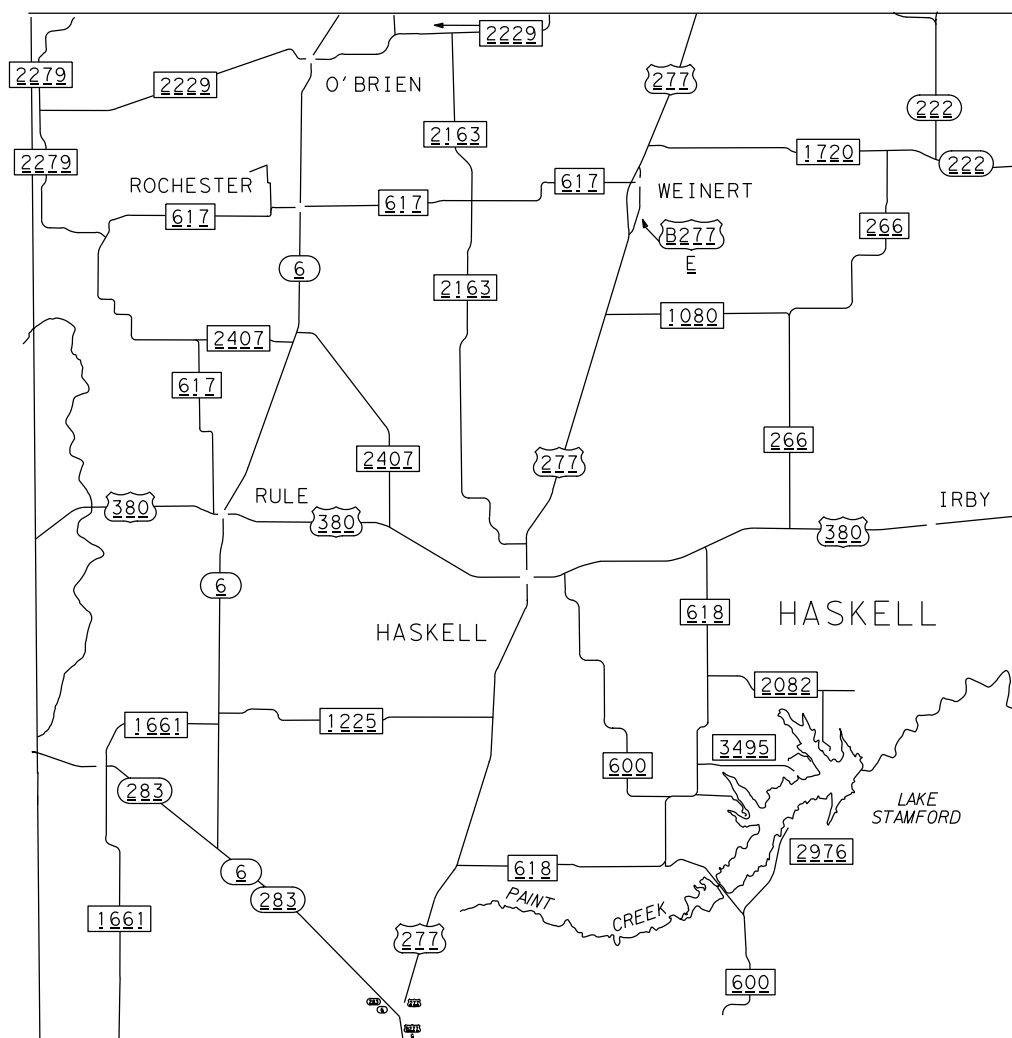
#### TYPE OF WORK:

MOWING HIGHWAY RIGHT OF WAY

PROJECT NO. : RMC 6390-27-001

HIGHWAY : US 380, ETC.

LIMITS OF WORK : Various locations in Haskell County



**FINAL PLANS:**

Date Contractor Began Work:  
Date Work was Completed:  
Date Work Accepted:  
Final Contract Cost: \$

**CERTIFICATION FOR FINAL PLANS:**

Project was built according to the plans and specifications. These final plans reflect the work done and the quantities shown thereon and on the final estimate are final quantities.

\_\_\_\_\_  
Area Engineer

TEXAS DEPARTMENT OF TRANSPORTATION

SUBMITTED FOR LETTING:

DocuSigned by:

*Daniel P. Richardson, P.E.*

10/11/2021

Daniel P. Richardson, P.E.  
Director of Operations

Date

DocuSigned by:

*Thomas G. Allbritton, P.E.*

10/11/2021

Thomas G. Allbritton, P.E.  
District Engineer

Date

LEVELS DISPLAYED									
1									
2									
3									
4									

SPECIFICATIONS ADOPTED BY THE TEXAS DEPARTMENT OF TRANSPORTATION NOVEMBER 1, 2014 AND SPECIAL SPECIFICATION ITEMS INCLUDED IN THE CONTRACT SHALL GOVERN ON THIS PROJECT.

© by Texas Department of Transportation:  
2021 all rights reserved

**GENERAL NOTES**

**Item 2 Instructions to Bidders**

Contractor questions will be accepted through email, phone, and in person by the below individuals:

Stewart Chapman, P.E.: [Stewart.Chapman@txdot.gov](mailto:Stewart.Chapman@txdot.gov)  
 Maxie Allen, P.E.: [Maxie.Allen@txdot.gov](mailto:Maxie.Allen@txdot.gov)  
 (Snyder Area Office)

All contractor questions will be reviewed by the Engineer. Once a response is developed, it will be posted to TxDOT's Public FTP at the following Address:  
<https://ftp.dot.state.tx.us/pub/txdot-info/Pre-Letting%20Responses/>

All questions submitted that generate a response will be posted through this site. The site is organized by District, Project Type (Construction or Maintenance), Letting Date, and CCSJ/Project Name.

**Item 4 – Scope of Work**

If agreed upon in writing by both parties to the contract, the contract may be extended for an additional period of time not to exceed the original contract time period. The extended contract will be for the original bid quantities, terms and conditions plus any applicable change orders.

**Item 7 Legal Relations and Responsibilities**

No significant traffic generator events identified.

**Item 8 Prosecution and Progress**

Each contract awarded by the Department stands on its own and as such, is separate from other contracts. A contractor awarded multiple contracts, must be capable and sufficiently staffed to concurrently process any or all contracts at the same time.

Liquidated Damages as stated in Special Provision, "Schedule of Liquidated Damages", will be assessed if a cycle is not completed within the specified number of working days.

**Item 9 Measurement and Payment**

This is a callout contract, plans quantity measurement requirements are not applicable.

**Item 500 Mobilization**

One each, Item 500-6033 Mobilization, will be paid for each callout for spot mowing.

**Item 502 Barricades, Signs, and Traffic Handling**

Additional signs, barricades and traffic handling may be necessary to complete the work shown herein and will be provided by the contractor as required and will be considered subsidiary to the bid items.

Traffic control shall be in compliance with the "Texas Manual on Uniform Traffic Control Devices", the TCP standards included in the plans, and the "Compliant Work Zone Traffic Control Device" list.

**GENERAL NOTES**

**Item 502 Barricades, Signs, and Traffic Handling, continued**

Work will not be allowed on both sides of the roadbed at the same time.

All workers are required to wear appropriate OSHA approved personal protective equipment, (fluorescent safety vest, hard hats, safety toed shoes, etc.), at all times while outside of vehicles on the project.

No mowing operations or moving of mowing equipment will be allowed before sunrise or after sunset. Trimming operations, for the day, must be completed at least 30 minutes before sunset.

All vehicles, including work trucks and tractors, must be equipped with highly visible omnidirectional amber flashing warning lights.

**Item 730 Roadside Mowing**

The Engineer will determine the sequence of tracts to be mowed.

Scheduling of the strip and spot mowing will be at the discretion of the Maintenance Supervisor and/or Area Engineer.

A minimum of 10 acres will be paid for each callout for spot mowing.

Mowing shall be full width with the exception of designated non mow areas.

In area where cable median barrier exist, narrow strips of vegetation will be mowed with a rigid frame mower or as approved in writing by the Engineer.

Slopes will be mowed with no damage to the established vegetation.

Other construction and/or maintenance contracts may be underway on roadsides to be mowed in this contract. Mowing will not be required in these areas when approved by the Engineer.

For each cycle required, the Engineer will send the contractor a work order containing the following information:

- Tract numbers in priority order and total number of acres to be mowed and litter removal.
- Working days allowed to complete the cycle
- Date when time charges for the cycle will begin

Working days allowed to complete a cycle will be determined by dividing the total number of acres required for the cycle by the production rate. The production rate is 125 acres/working day. A fraction of a day will be rounded up to the nearest whole number. If the total number of working days is not used during the completion of the work required within one cycle, the working days will not be carried forward to any cycle periods.

CONT	SECT	JOB	HIGHWAY
6390	27	001	US380, ETC.
DIST	COUNTY		SHEET NO.
ABL	HASKELL		2

Project Number: RMC 6390-27-001  
County: Haskell  
Highway: US 380, etc.  
Control: 6390-27-001

**GENERAL NOTES**

**Item 730 Roadside Mowing, continued**

Always mow the entire width of medians and outer separations (areas between main lanes, ramps, and frontage road).

Perform hand trimming on guardrail in areas where mowers are unable to access and hand trim 5 ft. behind guardrail or as directed by the Engineer.

Definitions:

- Full Width Mow – Mow entire width of right of way.
- Strip Mow – Mow 15 feet from edge of pavement or unpaved shoulder.
- Spot Mow – As directed by the Engineer

**Item 734 Litter Removal**

Litter removal will be performed no more than 2 working days prior to the mowing cycle.

Pick up any litter remaining after mowing operation.

Only one cycle of litter removal will be paid per mowing cycle.

It is the intent of this item that TxDOT's right-of-way be mowed and litter-free after the contractor's mowing operation.

CONT	SECT	JOB	HIGHWAY
6390	27	001	US380, ETC.
DIST	COUNTY		SHEET NO.
ABL	HASKELL		3

**ESTIMATE/QUANTITY SHEET**  
**COUNTY: HASKELL**  
**CSJ NO. 6390-27-001**

TRACT	HIGHWAY	LIMITS	STRIP MOWING			FULL-WIDTH MOWING			SPOT MOWING			LITTER REMOVAL		
			Cycles	Strip Mow Acres	Strip Mow TOTAL Acres	Cycles	Full-Width Acres	Full-Width TOTAL Acres	Cycles	Spot Mow Acres	Spot Mow TOTAL Acres	Cycles	Acres	Total Acres
1	US 277	FROM: JONES COUNTY LINE TO: 1 MILE SOUTH OF HASKELL SOUTH CITY LIMIT	1	139	139	2	340	680				3	340	1020
2	US 277 Litter Removal Area	FROM: 1 MILE NORTH OF HASKELL NORTH CITY LIMIT TO: KNOX COUNTY LINE From: Ramps North End of Overpass to Divided Highway	1	152	152	2	372	744				3	57	171
3	US 380	FROM: THROCKMORTON COUNTY LINE TO: 1 MILE EAST OF HASKELL EAST CITY LIMIT	1	49	49	2	106	212				3	106	318
4	US 380	FROM: RULE WEST CITY LIMIT TO: STONEWALL COUNTY LINE	1	20	20	2	64	128				3	64	192
5	US 380	FROM: 1 MILE WEST OF HASKELL WEST CITY LIMIT TO: RULE EAST CITY LIMIT	1	27	27	2	53	106				3	53	159
6	SH 6	FROM: KNOX COUNTY LINE TO: STAMFORD N. CITY LIMIT	1	119	119	2	239	478						
7	SH 283	FROM: SH 6 TO: STONEWALL COUNTY LINE	1	23	23	2	47	94						
8	SH 222	FROM: THROCKMORTON COUNTY LINE TO: KNOX COUNTY LINE	1	27	27	2	75	150						
9	FM 266	FROM: KNOX COUNTY LINE TO: SH 222	1	2	2	2	5	10						
10	FM 266	FROM: FM 1720 TO: US 380	1	50	50	2	114	228						
11	FM 1720	FROM: US 277 TO: SH 222	1	32	32	2	83	166						
12	FM 1080	FROM: US 277 TO: FM 266	1	20	20	2	40	80						
13	FM 618	FROM: US 277 TO: US 380	1	60	60	2	115	230						
14	FM 2082	FROM: FM 618 TO: WTU POWER PLANT	1	13	13	2	34	68						
15	FM 3495	FROM: FM 618 TO: 3 MILES EAST	1	11	11	2	24	48						
16	FM 600	FROM: US 380 TO: JONES COUNTY LINE	1	70	70	2	137	274						
17	FM 2976	FROM: FM 600 TO: 3 MILES NORTHEAST	1	11	11	2	33	66						
18	FM 1225	FROM: US 277 TO: SH 6	1	32	32	2	64	128						
19	FM 1661	FROM: SH 6 TO: JONES COUNTY LINE	1	46	46	2	119	238						
20	FM 617	FROM: SH 6 TO: US 380	1	105	105	2	180	360						
21	FM 617	FROM: SH 6 TO: US 277	1	32	32	2	66	132						
22	FM 2407	FROM: SH 6 TO: US 380	1	25	25	2	62	124						
23	FM 2407	FROM: FM 617 TO: SH 6	1	11	11	2	28	56						
24	FM 3337	FROM: FM 2163 TO: FM 2407	1	4	4	2	25	50						
25	FM 2279	FROM: FM 617 TO: KNOX COUNTY LINE	1	33	33	2	86	172						
26	FM 2229	FROM: FM 2279 TO: KNOX COUNTY LINE	1	61	61	2	154	308						
27	FM 2701	FROM: KNOX COUNTY LINE TO: FM 2229	1	2	2	2	5	10						
28	FM 2163	FROM: FM 2229 TO: US 277	1	2	2	2	5	10						
TBD	TBD	TBD TBD							1	100	100			
<b>TOTAL ACRES</b>					<b>1178</b>	<b>2675</b>	<b>5350</b>				<b>100</b>	<b>100</b>	<b>620</b>	<b>1860</b>

FHWA DIVISION	PROJECT NO.		SHEET NO.
6	RMC 6390-27-001		4
STATE	DISTRICT	COUNTY	
TEXAS	ABL	HASKELL	
CONTROL	SECTION	JOB	HIGHWAY NO.
6390	27	001	US380, ETC.

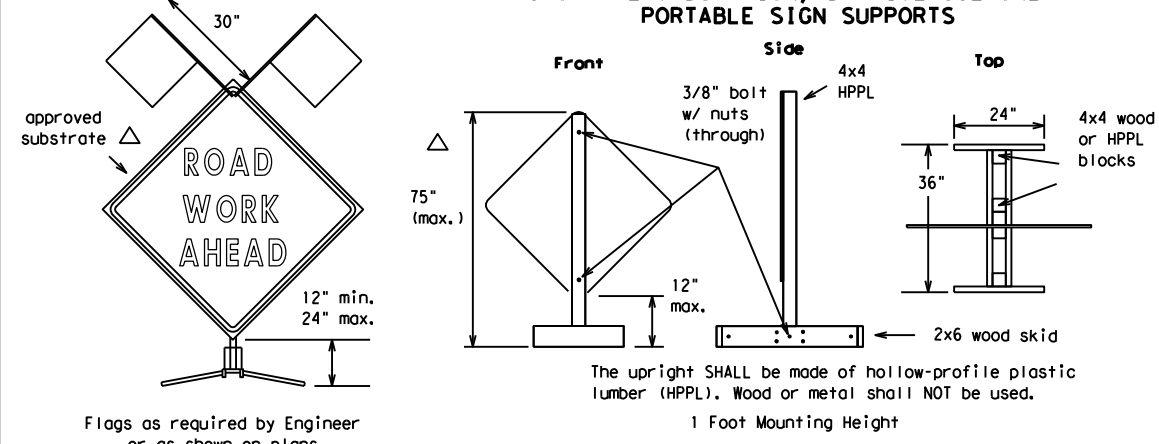
DISCLAIMER  
 The use of this standard is governed by the "Texas Engineering Practice Act". No warranty of any kind is made by TxDOT for any purpose whatsoever. TxDOT assumes no responsibility for the conversion of this standard to other formats or for incorrect results or damages resulting from its use.

1	2	3	4	5	6	7	8	9	10	11	12	13	14	15	16
17	18	19	20	21	22	23	24	25	26	27	28	29	30	31	32
33	34	35	36	37	38	39	40	41	42	43	44	45	46	47	48
49	50	51	52	53	54	55	56	57	58	59	60	61	62	63	

See the CWZTCD for the type of sign substrate that can be used for each approved sign support.

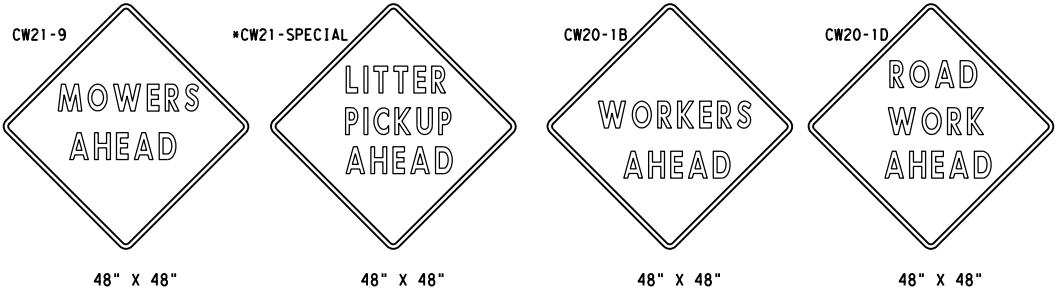
**EXAMPLES OF SIGN SUPPORTS**

**SHORT TERM DURATION, DAYTIME USE ONLY PORTABLE SIGN SUPPORTS**



Attachment to wooden supports will be by bolts and nuts or screws. Use TxDOT's or manufacturer's recommended procedures for attaching sign substrates to other types of sign supports.

**Nails will NOT be allowed.**



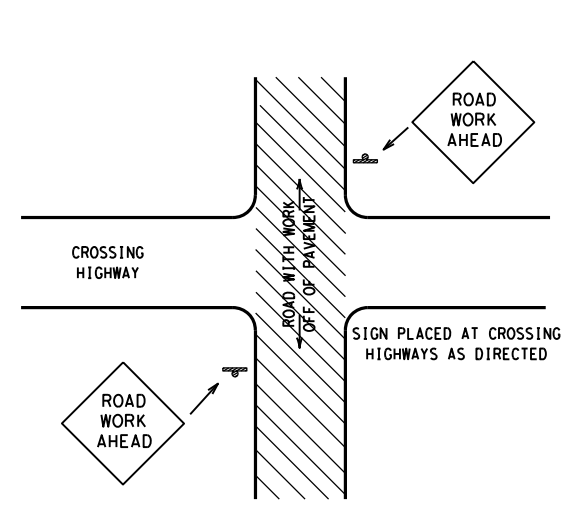
**SIGN IN ACCORDANCE WITH THE TEXAS MANUAL ON UNIFORM TRAFFIC CONTROL DEVICES FOR STREETS AND HIGHWAYS**

**MOWERS AHEAD SIGNS ARE USED FOR MOWING OPERATIONS.**

**LITTER PICKUP AHEAD, ROAD WORK AHEAD AND WORKER AHEAD SIGNS ARE USED AS DIRECTED FOR OTHER MAINTENANCE OPERATIONS WHEN ALL WORK OCCURS OFF OF THE PAVED HIGHWAY SURFACE.**

**ROLL-UP SIGNS CONFORMING TO DMS-8310 AND THE CWZTCD ALLOWED**

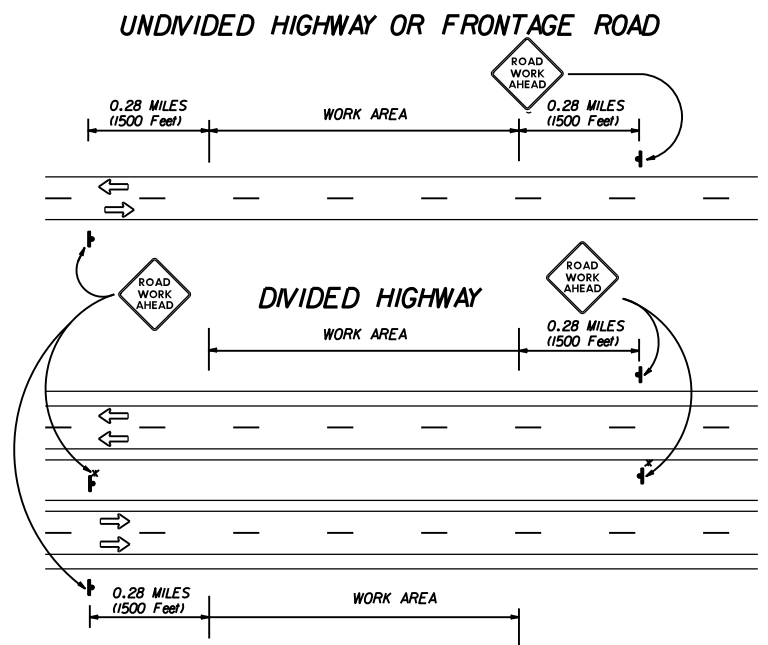
\*Letter dimensions and spacing for "CW21-SPECIAL" is the same as C20-1D



**TYPICAL LOCATION OF SIGNS AT HIGHWAY CROSSING**

WORK AREA IS A MAXIMUM OF 2.0 MILES UNLESS OTHERWISE DIRECTED. SIGNS MAY REMAIN IN PLACE ONLY DURING DAYLIGHT HOURS. SIGNS ARE TO BE PLACED 6' TO 12' OFF OF THE PAVED SURFACE UNLESS OTHERWISE DIRECTED. ROAD WORK AHEAD SIGNS SHOWN AS EXAMPLES, ONE OF THE FOUR TYPE SIGNS WILL BE USED AS DIRECTED.

\* SIGNS IN THE MEDIAN ARE REQUIRED WHEN WORK OCCURS IN MEDIAN



**TRAFFIC CONTROL PLAN FOR WORK OFF OF THE PAVED SURFACE.**

**GENERAL NOTES FOR WORK ZONE SIGNS**

- Contractor shall install and maintain signs in a straight and plumb condition and/or as directed by the Engineer.
- Wooden sign posts shall be painted white.
- Barricades shall NOT be used as sign supports.
- Nails shall NOT be used to attach signs to any support.
- All signs shall be installed in accordance with the plans or as directed by the Engineer. Signs shall be used to regulate, warn, and guide the traveling public safely through the work zone.
- The Contractor may furnish either the sign design shown in the plans or in the "Standard Highway Sign Designs for Texas" (SHSD). The Engineer/Inspector may require the Contractor to furnish other work zone signs that are shown in the TMUTCD but may have been omitted from the plans. Any variation in the plans shall be documented by written agreement between the Engineer and the Contractor's Responsible Person. All changes must be documented in writing before being implemented. This can include documenting the changes in the Inspector's TxDOT diary and having both the Inspector and Contractor initial and date the agreed upon changes. The additional signs requested by the Engineer/Inspector shall not be subsidiary.
- The Contractor shall furnish sign supports listed in the "Compliant Work Zone Traffic Control Device List" (CWZTCD). The Contractor shall install the sign support in accordance with the manufacturer's recommendations. If there is a question regarding installation procedures, the Contractor shall furnish the Engineer a copy of the manufacturer's installation recommendations so that the Engineer can verify the correct procedures are being followed.
- The Contractor is responsible for sign installations and replacing signs with damaged or cracked substrates and/or damaged or marred reflective sheeting as directed by the Engineer/Inspector.
- Identification markings may be shown only on the back of the sign substrate. The maximum height of letters and/or company logos used for identification shall be 1".
- The Contractor shall replace damaged wood posts. New or damaged wood sign posts shall not be spliced.

**Duration of Work (as defined by the "Texas Manual on Uniform Traffic Control Devices" Part VI)**

- The Contractor is responsible for ensuring the sign support and substrate meets crashworthiness. For mowing operation all signs and supports are Short-term Duration for daytime work.
- The Contractor shall furnish the sign sizes shown on this sheet or as directed by the Engineer.

**SIGN SUBSTRATES**

- The Contractor shall ensure that the sign substrate is allowed for the type of sign support that is being used. The CWZTCD lists each substrate that can be used on the different types and models of sign supports.
- "Mesh" type materials are NOT an approved sign substrate.
- All wooden individual sign panels fabricated from 2 or more pieces shall have one or more plywood cleat, 1/2" thick by 6" wide, fastened to the back of the sign and extending fully across the sign. The cleat shall be attached to the back of the sign using wood screws that do not penetrate the face of the sign panel. The screws shall be placed on both sides of the splice and spaced at 6" centers. The Engineer may approve other methods of splicing the sign faces.

**REFLECTIVE SHEETING**

- Reflectorized signs shall be constructed of sheeting meeting the color and retro-reflectivity requirements of DMS-8300 or DMS-8310. The DMS specifications can be accessed from the following web address:  
[http://manuals.dot.state.tx.us:80/dynaweb/colmates/@Generic\\_\\_CollectionView;cs=default;ts=default](http://manuals.dot.state.tx.us:80/dynaweb/colmates/@Generic__CollectionView;cs=default;ts=default)
- White sheeting, meeting the requirements of DMS-8300 Type C (High Specific Intensity), shall be used for signs with white background and channelizing devices.
- Orange sheeting, meeting the requirements of DMS-8300 Type E (Fluorescent Prismatic), shall be used for signs with orange backgrounds.

**SIGN LETTERS**

- All sign letters and numbers shall be clear, and open rounded type uppercase alphabet letters as approved by the Federal Highway Administration (FHWA) and as published in the "Standard Highway Sign Design for Texas" manual. Signs, letters and numbers shall be of first class workmanship in accordance with Department Standards and Specifications.

**REMOVING OR COVERING**

- Signs should be removed or completely covered when not mowing.
- Duct tape or other adhesive material shall NOT be affixed to a sign face.
- Signs and supports shall be removed by the end of the day.

**SIGN SUPPORT WEIGHTS**

- Where sign supports require the use of weights to keep from turning over, the use of sandbags with dry cohesionless sand is recommended.
- The sandbags will be tied shut to keep the sand from spilling and to maintain a constant weight.
- Rock, concrete, iron, steel or other solid objects will not be permitted for use as sign support weights.
- Sandbags should weigh a minimum of 35 lbs and a maximum of 50 lbs.
- Sandbags shall be made of a durable material that tears upon vehicular impact.
- Rubber (such as tire inner tubes) shall NOT be used for sandbags.
- Rubber ballasts (such as those used with cones or edgeline channelizers) shall NOT be used as sign support weights.
- Sandbags shall only be placed along or laid over the base supports of the traffic control device and shall not be suspended above ground level or hung with rope, wire, chains or other fasteners. Sandbags shall be placed along the length of the skids to weigh down the sign supports.
- Sandbags shall NOT be placed under the skid and shall not be used to level sign supports placed on slopes.

**CONTRACTOR REQUIREMENTS FOR MAINTAINING PERMANENT SIGNS WITHIN THE PROJECT LIMITS**

Any sign, sign support or traffic control device that is struck or damaged by the Contractor or his/her construction equipment shall be replaced or repaired as soon as possible by the Contractor at the Contractor's expense.

Only pre-qualified products shall be used. A copy of the "Compliant Work Zone Traffic Control Devices List" (CWZTCD) describes pre-qualified products and their sources and may be obtained by contacting:

Standards Engineer  
 Traffic Operations Division - TE  
 Texas Department of Transportation  
 125 East 11th Street  
 Austin, Texas 78701-2483  
 Phone (512) 416-3120  
 Fax (512) 416-3299

Instructions to locate the "CWZTCD" on TxDOT website are:

Start at website - [www.dot.state.tx.us](http://www.dot.state.tx.us)  
 Click on "About TxDOT",  
 Click on "Organizational Chart",  
 Click on "Traffic Operations Box",  
 Click on "Compliant Work Zone Traffic Control Devices",  
 Click on "View PDF".  
 This site is printable.

**Texas Department of Transportation**  
 Maintenance Division  
 Standard Plans

**ROADSIDE TRAFFIC CONTROL PLAN**

SHEET 1 OF 1      RS-TCP-05      NOT TO SCALE

FILE: RSTCP05.DGN	DW: LJB	CK: JG	DW: -	CK: -	NEG NO.:
© TxDOT FEBRUARY 2005		STATE DISTRICT	FEDERAL REGION	FEDERAL AID PROJECT	SHEET
REVISED: September 17, 2004	08	N/A	N/A	N/A	5
REVISED: FEBRUARY 2, 2005 Sign placement in TCP		COUNTY	CONTROL SECTION	JOB	HIGHWAY
REVISED:		HASKELL	6390	27	001 US380, ETC