

STATE OF TEXAS

DEPARTMENT OF TRANSPORTATION

MATERIALS MAINTENANCE CONTRACT

PROJECT: MMC- 6390-00-001
 CSJ: 6390-00-001
 HIGHWAY: US 79
 LIMITS OF WORK: ANDERSON COUNTY

FOR PURCHASE AND DELIVERY OF MATERIALS ONLY
 MATERIAL: HOT MIX

SUBMITTED FOR
 LETTING: _____
 9/17/2021

 DATE

APPROVED FOR
 LETTING: _____
 9/17/2021

 DATE

DocuSigned by:


 46653A261192450... AREA ENGINEER


DocuSigned by:


 0C37DA... DIRECTOR OF MAINTENANCE

INDEX OF SHEETS

- 1 TITLE SHEET
- 2A-2D GENERAL NOTES
- 3 ESTIMATE & QUANTITY SHEET
- 4 PLAN SHEET & SUMMARY

SPECIFICATIONS ADOPTED BY THE TEXAS DEPARTMENT OF TRANSPORTATION, NOVEMBER 1, 2014 AND SPECIAL SPECIFICATIONS ITEMS INCLUDED IN THE CONTRACT SHALL GOVERN ON THIS PROJECT.

© 2021			
FED RD DIV NO.	PROJECT NO.	SHEET NO.	
6	6390-00-001	1	
STATE	DISTRICT	COUNTY	
TEXAS	TYLER	ANDERSON	
CONTROL	SECTION	JOB	HIGHWAY NO.
6390	00	1	US 79
FILENAME			DATE
MMC_639000001			9/8/2021

County: ANDERSON

Control: 6390-00-001

Highway: US 79, ETC.

GENERAL NOTES: Hot Mix Materials Only

GENERAL.

Contractor questions on this project are to be emailed to the following individual(s):

Eric Fisher, P.E.	Area Engineer	eric.fisher@txdot.gov
Louis McDow, P.E.	Assistant Area Engineer	louis.mcdow@txdot.gov

Contractor questions will only be accepted through email, phone, and in person to the above individuals. All contractor questions will be reviewed by the Engineer. Once a response is developed, it will be posted to TxDOT’s Public FTP at the following Address:

<https://ftp.dot.state.tx.us/pub/txdot-info/Pre-Letting Responses/>

All questions submitted that generate a response will be posted through this site. The site is organized by District, Project Type (Construction or Maintenance), Letting Date, CCSJ/Project Name.

.....

The intent of this contract is to provide hot mix materials at non-sites specific locations within the Palestine Maintenance Section. The contractor will provide materials: at the hot mix plant to be loaded into Department owned trucks or Department contracted trucks (pick up), or in a contractor truck to a designated location as defined in the Work Order (delivery). The hot mix plant shall be located within a 60 mile radius of the Palestine Maintenance Office, located at 4089 S SH 19, Palestine, TX, 75801.

A map of Anderson County is included in this contract.

Each contract awarded by the Department stands on its own and as such, is separate from other contracts. A Contractor awarded multiple contracts must be capable and sufficiently staffed to concurrently process any or all contracts.

Prior to beginning operations, the Department will arrange a preconstruction conference between representatives of the Department and the Contractor. In this meeting, the representatives from all parties will discuss the contract, proposed procedures and the plans for performing the work while providing for safe passage of traffic at all times. Specifications, unusual conditions, and other pertinent items regarding the work will also be discussed.

Limit the use of the roadway for the hauling of material to legal loads. Keep the traveled surface used in hauling operations free of dirt or other materials.

Department-approved safety hats and safety vests will be worn by all workers and visitors when:

County: ANDERSON

Control: 6390-00-001

Highway: US 79, ETC.

Workers are outside of the vehicles at all outdoor worksites. This includes those who occasionally visit worksites either on the highway surface or right-of-way.

Working in areas where there is a danger of head injury from impact, from falling or flying objects, or from electrical shock or burns.

Non-compliance with this requirement will be grounds for suspension of work.

All work on this contract will be scheduled and directed by the:

Maintenance Section Supervisor: Steven Thornton 903-729-5834

Maintenance Section Assistant: Drew Watson 903-729-5834

ITEM 2: INSTRUCTIONS TO BIDDERS

This project includes plan sheets that are not part of the bid proposal. View plans on-line or download from the web at: <https://www.txdot.gov/business/letting-bids/plans-online.html>.

Order plans from any of the plan reproduction companies shown on the web at:

http://www.dot.state.tx.us/business/contractors_consultants/repro_companies.htm.

ITEM 8. PROSECUTION AND PROGRESS

Working days will be computed and charged in accordance with Section 8.3.1.5., "Calendar Day."

In accordance with Article 8.6 "Failure to Complete Work on Time," Liquidated damages will be charged for failure to complete each Work Order as specified. The amount assessed per day for liquidated damages will be 5% of the estimated cost of the Work Order, but not to be less than \$250 per day and not to exceed \$1000 per day.

Time requirements for each of the Work Orders will be indicated on each individual Work Order. Contractor will be given no less than 24 hours' notice for hot mix (pick up) and 48 hours' notice for hot mix (delivery) to successfully complete each Work Order.

Notify the Maintenance Supervisor or Assistant when encountering any unforeseen delays.

ITEM 9. MEASUREMENT & PAYMENT

In accordance with Article 9.1., "Measurement of Quantities," furnish the tare and maximum gross weights as well as the volume capacity of all vehicles, trucks, truck-tractors, trailers, semi-trailers, or combination of such vehicles used to deliver materials for this Contract. Also, furnish calculations supporting these weights and capacities. Provide all measurements required for pay a minimum of 2 days before the trucks are used.

County: ANDERSON

Control: 6390-00-001

Highway: US 79, ETC.

In accordance with Article 9.2 "Plans Quantity Measurement," plans quantity measurement requirements are not applicable for this contract.

Contractor is responsible for obtaining annual overweight tolerance permit if hauling material which exceeds the legal road weight.

In addition to the complete destination address, each delivery ticket must be clearly marked with the work order number. Each shipment must be accompanied by a haul ticket.

Contractor's driver shall report to the State's representative at the time of arrival at the final delivery location and obtain a signature documenting the date and time.

Contractor must provide a conversion factor to convert hot mix from tons to cubic yards.

ITEM 500. MOBILIZATION

Mobilization does not apply to this non-site specific materials contract.

ITEM 502. BARRICADES, SIGNS AND TRAFFIC HANDLING

TxDOT will provide any traffic control needs.

Use strobe lights or rotating beacons on all motorized equipment, operating on or adjacent to the road surface.

ITEM 8004. DENSE-GRADED HOT-MIX ASPHALT (Materials Only)

The Engineer may accept a previously approved design, if prior experience using the design was satisfactory. Unless waived by the Engineer, a trial batch will be required as outlined in Item 340. The Hamburg Wheel Tracking requirements are waived for driveways.

Provide Class A coarse aggregate for the surface as listed in the Department's *Bituminous Rated Source Quality Catalog* (BRSQC).

When using crushed gravel as a coarse aggregate for ACP, use 1% lime as an antistripping agent.

Give the State inspector at the spreading and finishing machine one weight ticket for each load of material. When directed, weigh asphaltic concrete loads on public scales to ensure the proper weight of material.

For materials paid for by the ton, provide a summary spreadsheet in accordance with Article 520.2., "Equipment."

ITEM 8006. SUPERPAVE MIXTURES (Materials Only)

When using crushed gravel as a coarse aggregate for ACP, use 1% lime as an antistripping agent.

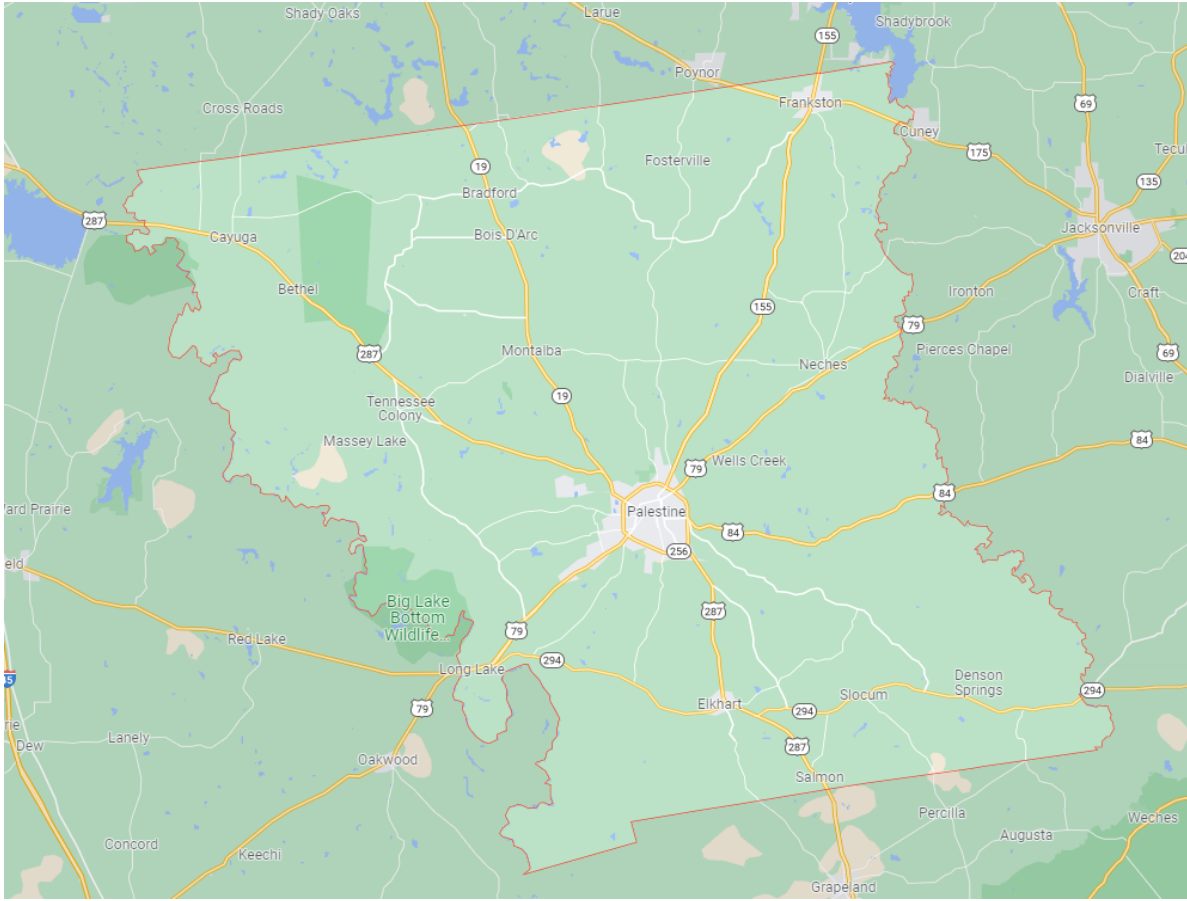
Provide coarse aggregate for the final surface course from the same source or blended sources unless otherwise directed.

Give the State inspector at the spreading and finishing machine one weight ticket for each load of material. When directed, weigh asphaltic concrete loads on public scales to ensure the proper weight of material.

For materials paid for by the ton, provide a summary spreadsheet in accordance with Article 520.2, "Equipment."


Provide Class A coarse aggregate for the surface as listed in the Department's *Bituminous Rated Source Quality Catalog* (BRSQC).

All RAP used on this project must be fractionated. If an existing mix design is submitted for use as Warm Mix Asphalt (WMA), then a new trial batch with passing Hamburg Wheel test results is required.



ANDERSON COUNTY

PLAN SHEET SUMMARY

© 2021	 Texas Department of Transportation		
FED RD DIV NO.	PROJECT NO.	SHEET NO.	
6	6390-00-001	1	
STATE	DISTRICT	COUNTY	
TEXAS	TYLER	ANDERSON	
CONTROL	SECTION	JOB	HIGHWAY NO.
6390	00	1	US 79
FILENAME			DATE
MMC_639000001			9/8/2021