

NOT TO SCALE

STATE OF TEXAS
DEPARTMENT OF TRANSPORTATION

PLANS OF PROPOSED
HIGHWAY ROUTINE MAINTENANCE CONTRACT

GRAPHICS FILE		MAINTENANCE PROJECT NO.		SHEET NO.
		RMC - 638966001		1
CHECKED	STATE	STATE DIST.	COUNTY	
	TEXAS	23	COMANCHE	
CHECKED	CONT.	SECT.	JOB	HIGHWAY NO.
	6389	66	001	US0067

AREA OF DISTURBED SOIL = 0 ACRES

EXCEPTIONS: NONE
 EQUATIONS: NONE
 RAILROAD: NONE

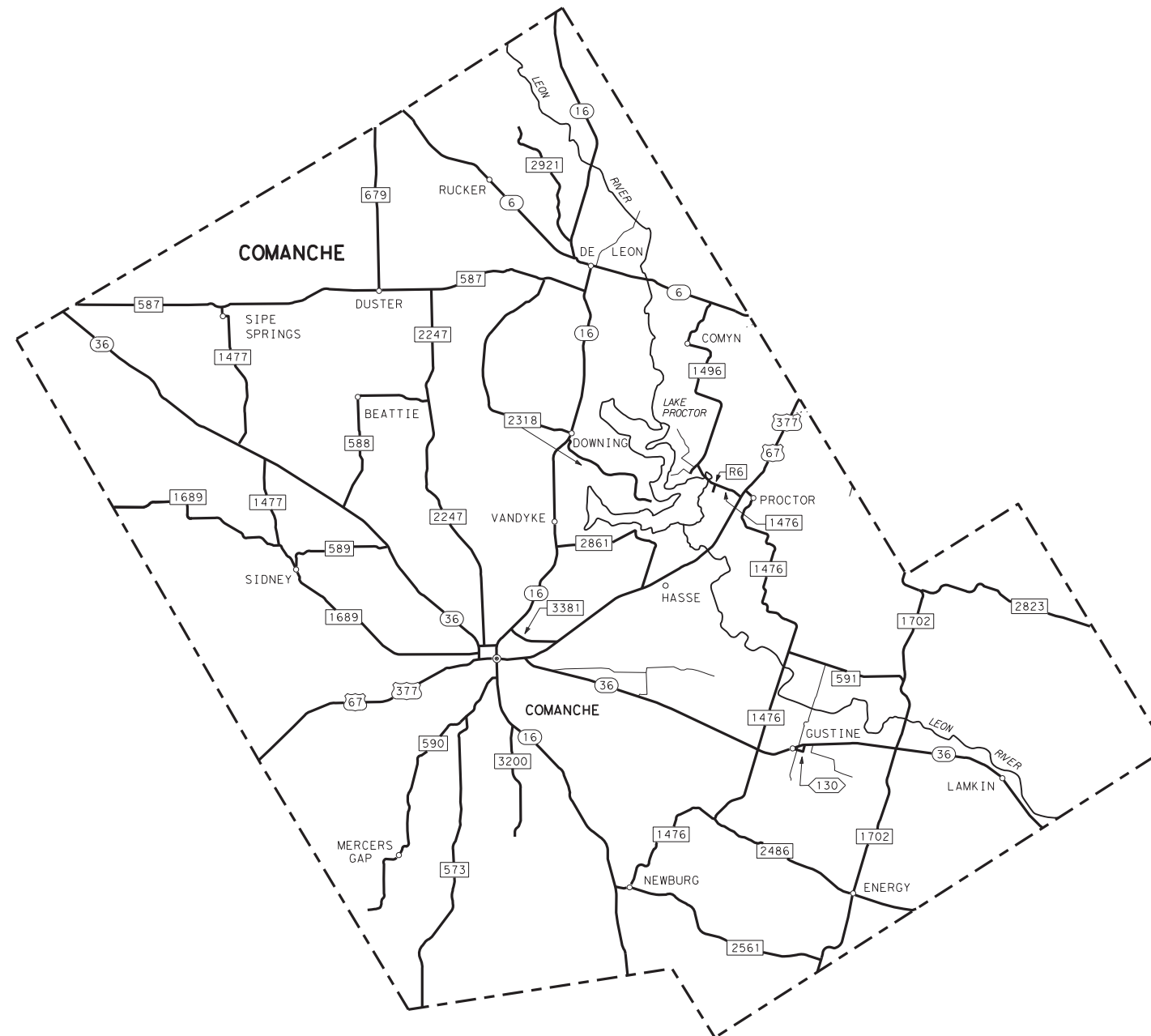
TYPE OF WORK:
 ROADSIDE MOWING
 (NON-SITE-SPECIFIC)
 (CALL-OUT AS NEEDED)

INDEX OF SHEETS

<u>SHEET NO.</u>	<u>DESCRIPTION</u>
GENERAL	
1	TITLE SHEET
2	GENERAL NOTES
3	ESTIMATE & QUANTITY SHEET
4	SUMMARY OF LOCATIONS
5	STRIP-MOW-ND-04
6	STRIP-MOW-D-04

TRAFFIC CONTROL STANDARDS

7	RS-TCP-05
---	-----------



TEXAS DEPARTMENT OF TRANSPORTATION
 RECOMMENDED FOR LETTING

DocuSigned by:
E. J. J. J. J., PE
 9D2D0C440F014A4...

8/20/2021

 DIRECTOR OF OPERATIONS

 Date

Project Number: RMC - 638966001

County: COMANCHE

Control: 6389-66-001

Highway: US0067

GENERAL NOTES:

- ITEM 730 will be performed on a CALLOUT BASIS at locations identified by each CALLOUT/WORK ORDER.
- This is a CALLOUT CONTRACT. Plan Quantity Measurement does not apply.
- This is a Non-Site-Specific Contract. The LOCATIONS (ROADWAYS) shown on the SUMMARY OF LOCATIONS in the Plans are for Contractor's information only.
- ESTIMATED QUANTITIES shown on the SUMMARY OF LOCATIONS in the Plans are for Contractor's information only.
- QUANTITIES, ROADWAYS and # OF PASSES to be mowed will be identified by each WORK ORDER.
- Fall Mowing/Fall Cleanup – Complete all fall mowing by December 31st.

ITEM 2 INSTRUCTIONS TO BIDDERS

Contractor questions on this project are to be emailed to the following individual(s):

<u>Name</u>	<u>Email Address</u>
Eric Lykins, P.E.	eric.lykins@txdot.gov
Blake Stembridge, E.I.T.	blake.stembridge@txdot.gov

Contractor questions will be accepted through email, phone and in person by the above individuals.

All contractor questions will be reviewed by the Engineer. Once a response is developed, it will be posted to TxDOT's Public FTP at the following Address:

<https://ftp.dot.state.tx.us/pub/txdot-info/Pre-Letting Responses/>

All questions submitted that generate a response will be posted through this site. The site is organized by District, Project Type (Construction or Maintenance), Letting Date, CCSJ/Project Name.

ITEM 7 LEGAL RELATIONS AND RESPONSIBILITIES

No significant traffic generator events identified.

Project Number: RMC - 638966001

County: COMANCHE

Control: 6389-66-001

Highway: US0067

ITEM 502 BARRICADES, SIGNS AND TRAFFIC HANDLING:

Perform all traffic control according to the Texas Manual on Uniform Traffic Control Devices for Streets and Highways and plan sheet RS-TCP-05.

ITEM 730 ROADSIDE MOWING

Report to the Project Inspector prior to beginning work each day.

Keep equipment MORE THAN 30 ft. from the edge of the pavement or travel lane during non-working hours.

Working Days: The Engineer will calculate and specify the number of working days granted for each WORK ORDER using a production rate of 125 acres each working day.

Set mower cutting height at 7 in. Hand trim to a height of approximately 4 in.

Hand trim around all dead animals or other large debris that cannot be mowed over or moved in the same manner as any other fixed object. It is also acceptable to move the object to the right of way line prior to mowing.

Strip Mowing:

- Mowing width of 15 ft. - 1 pass with a 15 ft. mower and is actually measured and paid as 14 ft.
- Mowing width of 30 ft. - 2 passes with a 15 ft. mower and is actually measured and paid as 28 ft.
- Mowing width of 45 ft. - 3 passes with a 15 ft. mower and is actually measured and paid as 42 ft.
- Trim around signs and driveways beyond the 15 ft., 30 ft. or 45 ft. Strip Mow width.
- Trim around curbs and sidewalks in the city sections.
- All areas not CALLED OUT by WORK ORDER become non-mow areas.
- In reference to plan sheet STRIP-MOW-ND-04, note number 2 is not required unless CALLED OUT by WORK ORDER.

Estimate Sheet

ESTIMATE SUMMARY															
						CONTROL 6389-66-001 US0067 ROADSIDE MOWING		A L T	ITEM CODE			DESCRIPTION	UNIT	TOTAL	
EST	FINAL	EST	FINAL	EST	FINAL	EST	FINAL		ITEM CODE	DESC CODE	SP NO			EST	FINAL
						8788.720			730	6001		STRIP MOWING	AC	8788.720	

ESTIMATE & QUANTITY SHEET

DIST	COUNTY	CCSJ	SHEET
23	COMANCHE	6389-66-001	3

SUMMARY OF LOCATIONS - COMANCHE COUNTY

CSJ 6389-66-001

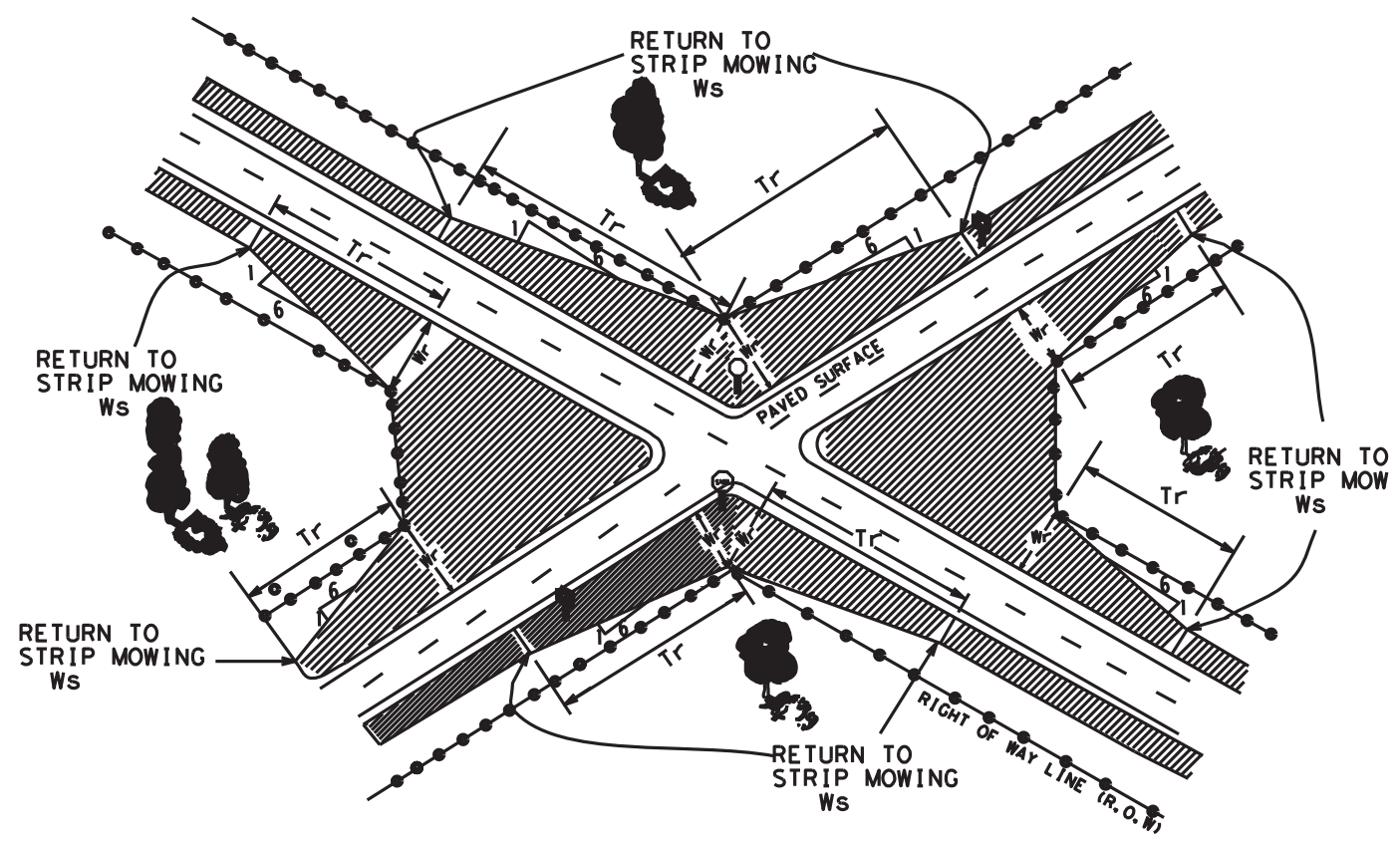
- GENERAL NOTES:**
- ITEM 730 will be performed on a **CALLOUT BASIS** at locations identified by each **CALLOUT/WORK ORDER**.
 - This is a **CALLOUT CONTRACT**. Plan Quantity Measurement does not apply.
 - This is a Non-Site-Specific Contract. The **LOCATIONS (ROADWAYS)** shown here are for **INFORMATION ONLY**.
 - **ESTIMATED QUANTITIES** shown here are for **INFORMATION ONLY**.
 - QUANTITIES, ROADWAYS and # OF PASSES will be identified by each **WORK ORDER**.

HIGHWAY	LIMITS		REFERENCE MARKER		LENGTH IN MILES	STRIP MOWING (1 PASS)			STRIP MOWING (2 PASSES)			STRIP MOWING (3 PASSES)		
	FROM	TO	FROM	TO		# OF MOWINGS	ACRES 1 PASS	ACRES TOTAL	# OF MOWINGS	ACRES 2 PASSES	ACRES TOTAL	# OF MOWINGS	ACRES 3 PASSES	ACRES TOTAL
US 67	BROWN/COMANCHE CO LINE	COMANCHE WEST CITY LIMITS	545	555	10.01	0	68	0	2	100	200	2	100	200
US 67	ERATH/COMANCHE CO LINE	JCT SH 36 AND US 67	528	546	14.91	0	68	0	2	137	274	2	150	301
SH 6	EASTLAND/COMANCHE CO LINE	ERATH/COMANCHE CO LINE	378	396	16.41	0	60	0	2	120	241	2	136	273
SH 16	EASTLAND/COMANCHE CO LINE	COMANCHE NORTH CITY LIMITS	330	356	12.95	0	60	0	2	119	238	2	184	369
SH 16	COMANCHE SOUTH CITY LIMITS	MILLS/COMANCHE CO LINE	358	370	26.12	0	108	0	2	215	431	2	243	486
SH 36	EASTLAND/COMANCHE CO LINE	HAMILTON/COMANCHE CO LINE	354	400	41.85	0	186	0	2	372	744	2	453	906
RR 6	JCT FM 1476	END OF STATE MAINTENANCE	322	322	0.29	2	1	2	1	644	644	0	3	0
FM 573	JC FM 590	MILLS/COMANCHE CO LINE	332	344	11.94	2	45	90	1	688	688	0	97	0
FM 587	EASTLAND/COMANCHE CO LINE	DELEON WEST CITY LIMITS	316	337	19.82	2	80	160	1	160	160	0	160	0
FM 588	JCT FM 2247	JCT SH 36	316	324	7.29	2	28	56	1	648	648	0	60	0
FM 589	JCT FM 1689	JCT SH 36	474	479	4.07	2	15	29	1	20	20	0	20	0
FM 590	COMANCHE SOUTH CITY LIMITS	BROWN/COMANCHE CO LINE	332	345	11.86	2	43	86	1	64	64	0	64	0
FM 591	JCT FM 1476	JCT FM 1702	494	499	4.72	2	18	35	1	35	35	0	35	0
FM 679	EASTLAND/COMANCHE CO LINE	JCT FM 587	308	315	6.41	2	26	51	1	630	630	0	64	0
FM 1476	JCT FM 1496	JCT SH 16	322	347	23.91	2	84	168	1	153	153	0	153	0
FM 1477	JCT FM 587	JCT FM 1689	314	324	9.15	2	34	68	1	648	648	0	75	0
FM 1496	JCT SH 6	END OF PAVEMENT	314	324	9.06	2	35	70	1	60	60	0	60	0
FM 1689	BROWN/COMANCHE CO LINE	COMANCHE WEST CITY LIMITS	468	486	16.97	2	63	126	1	972	972	0	134	0
FM 1702	ERATH/COMANCHE CO LINE	HAMILTON/COMANCHE CO LINE	326	344	16.45	2	62	123	1	688	688	0	134	0
FM 2156	JCT SH 16	ERATH/COMANCHE CO LINE	482	484	2.04	2	10	20	1	968	968	0	27	0
FM 2247	JCT FM 587	COMANCHE NORTH CITY LIMITS	314	330	14.10	2	57	114	1	114	114	0	137	0
FM 2318	JCT FM 587	END OF PAVEMENT	314	329	14.30	2	59	118	1	658	658	0	129	0
FM 2486	JCT FM 1476	HAMILTON/COMANCHE CO LINE	496	506	8.66	2	35	69	1	1,012	1,012	0	80	0
FM 2561	JCT FM 1476	JCT FM 1702	486	495	8.57	2	32	64	1	990	990	0	69	0
FM 2823	JCT FM 1702	HAMILTON/COMANCHE CO LINE	498	506	7.27	2	29	57	1	1,012	1,012	0	66	0
FM 2861	JCT SH 16	JCT US 67	484	492	6.09	2	26	52	1	984	984	0	59	0
FM 2921	EASTLAND/COMANCHE CO LINE	JCT SH 6	480	491	10.54	2	42	84	1	982	982	0	97	0
FM 3200	JCT SH 16	END OF PAVEMENT	328	333	4.39	2	16	32	1	666	666	0	34	0
FM 3381	JCT SH 16	END OF PAVEMENT	482	484	5.41	2	21	42	1	968	968	0	42	0
TOTAL					345.56			1,719		15,891			2,535	

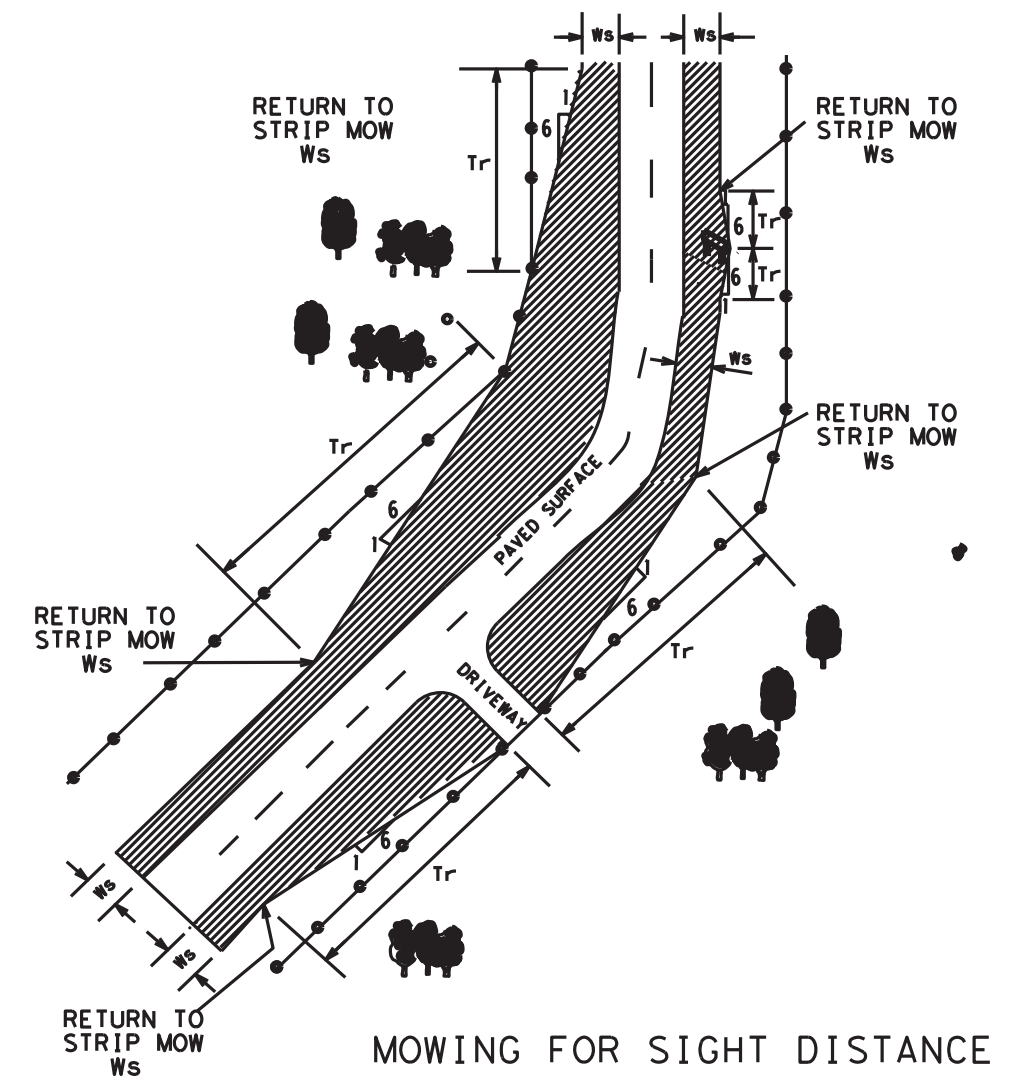
SUMMARY:	AC
STRIP MOWING (1 PASS)	1,718.60
STRIP MOWING (2 PASSES)	2,535.06
STRIP MOWING (3 PASSES)	2,535.06
STRIP MOWING AT UNDETERMINED LOCATIONS	2,000.00
TOTAL	8,788.72

Sheet No. 4

DISCLAIMER
 The use of this standard is governed by the "Texas Engineering Practice Act". No warranty of any kind is made by TxDOT for any purpose whatsoever. TxDOT assumes no responsibility for the conversion of this standard to other formats or for incorrect results or damages resulting from its use.



MOWING FOR SIGHT DISTANCE
 WITH TRANSITION FROM INTERSECTION
 BACK TO STRIP MOWING



MOWING FOR SIGHT DISTANCE
 TRANSITIONS AT DRIVEWAYS,
 SIGNS, AND CURVES

GENERAL NOTES:

1. THE NORMAL WIDTH FOR STRIP MOWING IS 15' UNLESS OTHERWISE SHOWN ON THE PLANS.
2. MOW TO THE R.O.W. LINE IN FRONT OF BUSINESSES, RESIDENCES, CHURCHES, OR CULTIVATED FIELDS UNLESS OTHERWISE SHOWN ON THE PLANS.
3. TRANSITION FOR SIGHT DISTANCE TO R.O.W LINE OR AROUND SIGNS AS SHOWN ON THIS SHEET UNLESS OTHERWISE SHOWN ON THE PLANS.

	RIGHT OF WAY LINE
	MOWING LOCATION
W_r	R.O.W. WIDTH (AT START OF TRANSITION)
W_s	STRIP MOWING WIDTH
T_r	TRANSITION



Texas Department of Transportation
 Maintenance Division
 Standard Plans

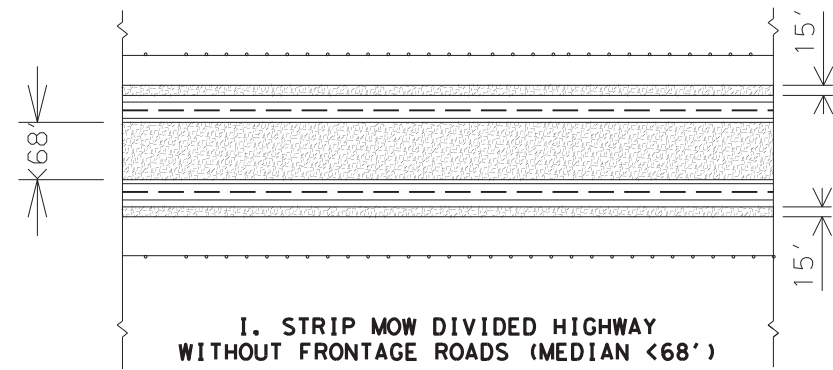
STRIP MOWING NON-DIVIDED HIGHWAYS

STRIP-MOW-ND-04

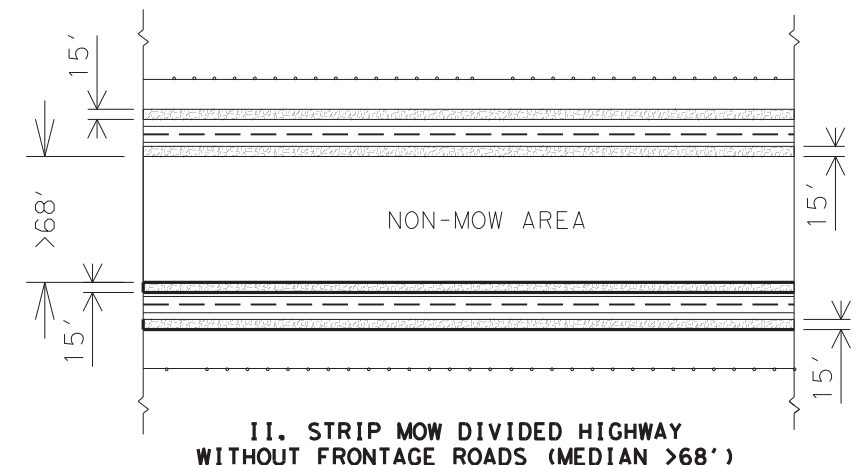
SHEET 1 OF 1 NOT TO SCALE

FILE: SMOWND04.DGN	DN: LJB	CK: JG	DW: -	CK: -	NEG NO.:
© TxDOT 2004	STATE DISTRICT	FEDERAL REGION	FEDERAL AID PROJECT		SHEET
REVISED: 5/18/2004	LJB	BWD	N/A	RMC - 638966001	5
REVISED:			COUNTY	CONTROL SECTION	JOB HIGHWAY
REVISED:			COMANCHE	6389 66	001 US0067

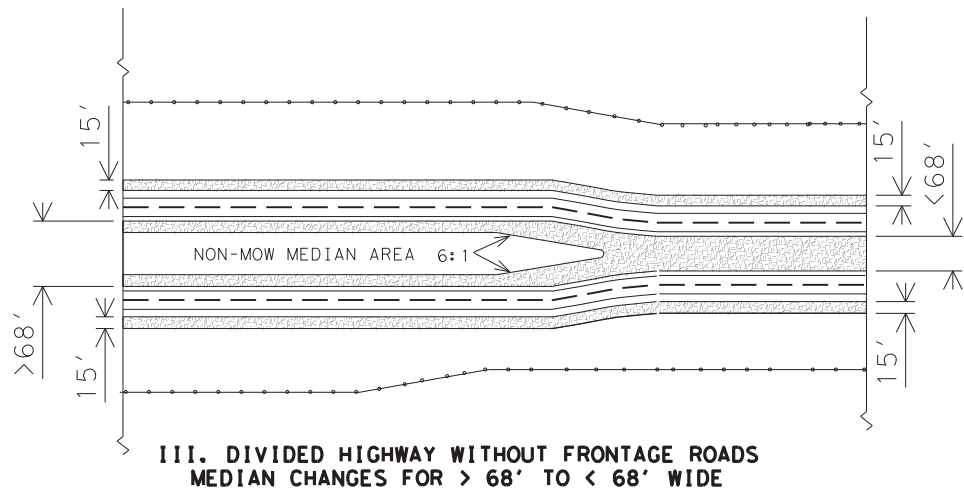
DISCLAIMER
 The use of this standard is governed by the "Texas Engineering Practice Act". No warranty of any kind is made by TxDOT for any purpose whatsoever. TxDOT assumes no responsibility for the conversion of this standard to other formats or for incorrect results or damages resulting from its use.



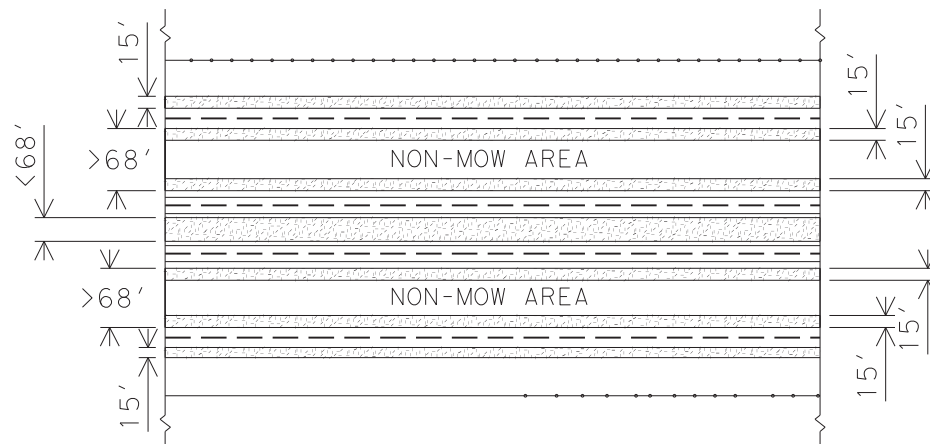
I. STRIP MOW DIVIDED HIGHWAY WITHOUT FRONTAGE ROADS (MEDIAN < 68')



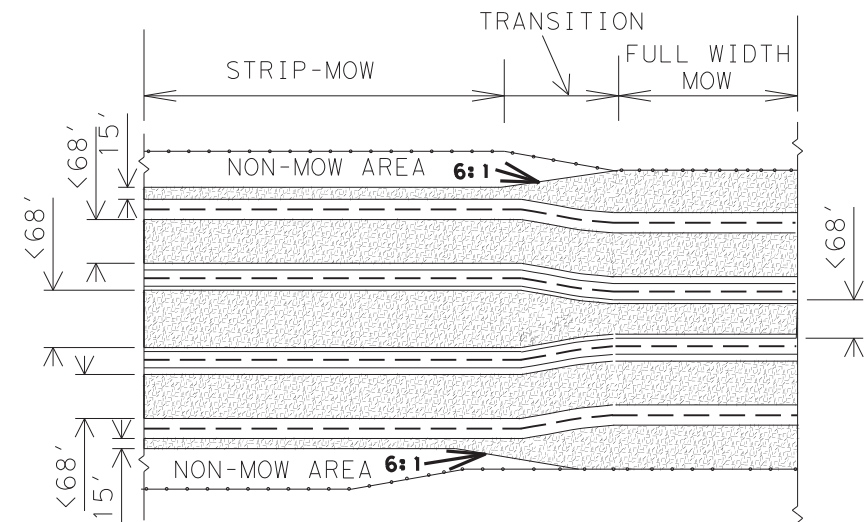
II. STRIP MOW DIVIDED HIGHWAY WITHOUT FRONTAGE ROADS (MEDIAN > 68')



III. DIVIDED HIGHWAY WITHOUT FRONTAGE ROADS MEDIAN CHANGES FOR > 68' TO < 68' WIDE



IV. STRIP MOW WHEN SEPARATION BETWEEN MAIN LANE AND FRONTAGE ROADS IS WIDER THAN 68'

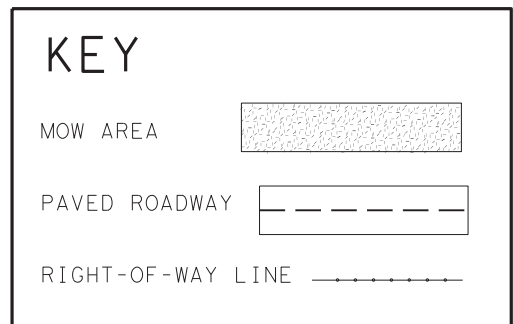


V. TRANSITION FROM FULL WIDTH TO STRIP MOWING DIVIDED HIGHWAY WITH FRONTAGE ROADS (MEDIAN < 68' WIDE)

GENERAL NOTES:

1. MOW THE ENTIRE WIDTH OF MEDIANS AND OUTER SEPARATIONS (AREAS BETWEEN MAIN LANES, RAMPS, AND FRONTAGE ROAD) EXCEPT FOR NON-MOW AREAS.
2. MOW FULL-WIDTH ALL MEDIANS AND OUTER SEPARATIONS 68' OR LESS FROM PAVEMENT EDGE TO PAVEMENT EDGE.
3. FOR MEDIANS AND OUTER SEPARATIONS GREATER THAN 68' MOW A 15' ALONG EACH PAVEMENT EDGE.
4. NON-MOW AREAS IN MEDIANS & OUTER SEPARATIONS WILL BE CONSIDERED THE AREA IN MEDIANS AND OUTER SEPARATIONS GREATER THAN 68' BETWEEN THE 15' STRIP MOW AREAS.
5. OTHER NON-MOW AREA'S WILL BE SHOWN ELSEWHERE ON PLANS OR MARKED ON THE RIGHT OF WAY.

LEVELS DISPLAYED															
1	2	3	4	5	6	7	8	9	10	11	12	13	14	15	16
17	18	19	20	21	22	23	24	25	26	27	28	29	30	31	32
33	34	35	36	37	38	39	40	41	42	43	44	45	46	47	48
49	50	51	52	53	54	55	56	57	58	59	60	61	62	63	



STRIP MOWING
 (DIVIDED HIGHWAYS)
 STRIP-MOW-D-04

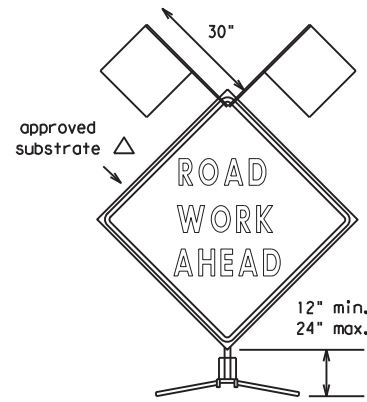
SHEET 1 OF 1		NOT TO SCALE									
FILE:	SMOWD04.DGN	DN:	LJB	CK:	JG	DW:	-	CK:	-	NEG NO.:	
© TxDOT JUNE 2004		STATE DISTRICT	BWD	FEDERAL REGION	N/A	FEDERAL AID PROJECT		RMC - 638966001		SHEET 6	
REVISED:	6/03/2004	COUNTY			CONTROL	SECTION	JOB	HIGHWAY			
REVISED:		COMANCHE			6389	66	001	US0067			

DISCLAIMER The use of this standard is governed by the "Texas Engineering Practice Act". No warranty of any kind is made by TxDOT for any purpose whatsoever. TxDOT assumes no responsibility for the conversion of this standard to other formats or for incorrect results or damages resulting from its use.

1	2	3	4	5	6	7	8	9	10	11	12	13	14	15	16
17	18	19	20	21	22	23	24	25	26	27	28	29	30	31	32
33	34	35	36	37	38	39	40	41	42	43	44	45	46	47	48
49	50	51	52	53	54	55	56	57	58	59	60	61	62	63	

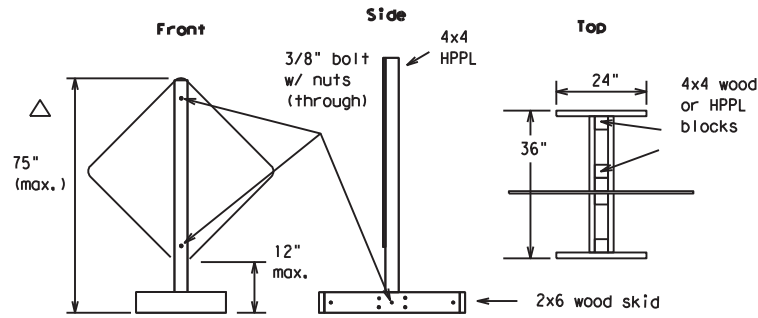
EXAMPLES OF SIGN SUPPORTS

See the CWZTCD for the type of sign substrate that can be used for each approved sign support.



Flags as required by Engineer or as shown on plans

SHORT TERM DURATION, DAYTIME USE ONLY PORTABLE SIGN SUPPORTS

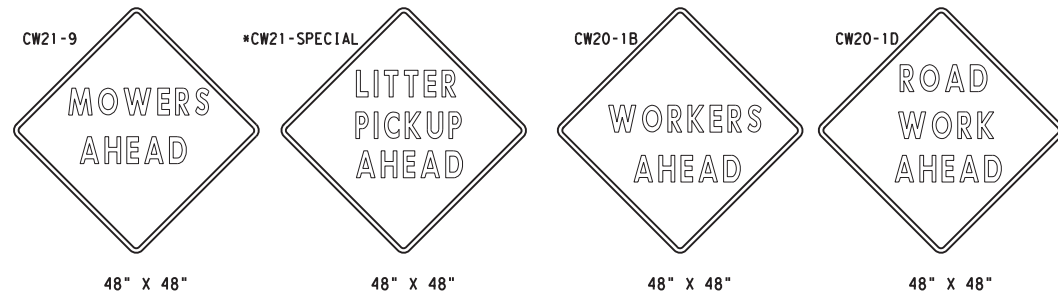


The upright SHALL be made of hollow-profile plastic lumber (HPPL). Wood or metal shall NOT be used.

1 Foot Mounting Height

Attachment to wooden supports will be by bolts and nuts or screws. Use TxDOT's or manufacturer's recommended procedures for attaching sign substrates to other types of sign supports.

Nails will NOT be allowed.



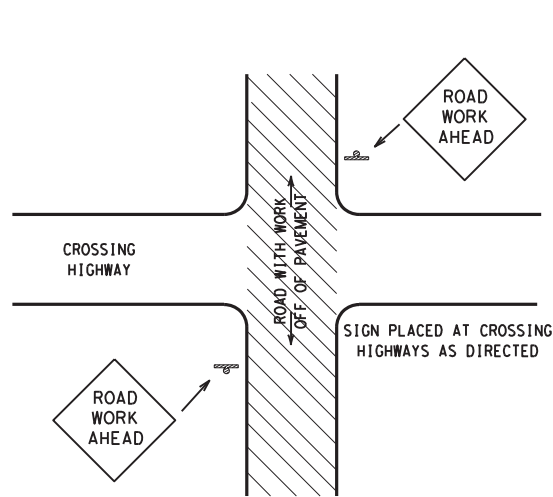
SIGN IN ACCORDANCE WITH THE TEXAS MANUAL ON UNIFORM TRAFFIC CONTROL DEVICES FOR STREETS AND HIGHWAYS

MOWERS AHEAD SIGNS ARE USED FOR MOWING OPERATIONS.

LITTER PICKUP AHEAD, ROAD WORK AHEAD AND WORKER AHEAD SIGNS ARE USED AS DIRECTED FOR OTHER MAINTENANCE OPERATIONS WHEN ALL WORK OCCURS OFF OF THE PAVED HIGHWAY SURFACE.

ROLL-UP SIGNS CONFORMING TO DMS-8310 AND THE CWZTCD ALLOWED

*Letter dimensions and spacing for "CW21-SPECIAL" is the same as C20-1D



TYPICAL LOCATION OF SIGNS AT HIGHWAY CROSSING

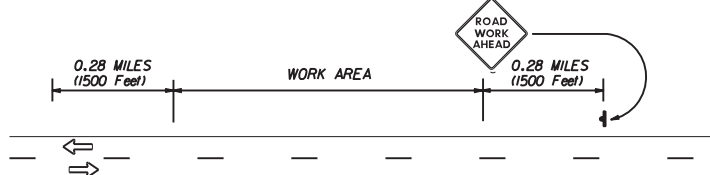
WORK AREA IS A MAXIMUM OF 2.0 MILES UNLESS OTHERWISE DIRECTED. SIGNS MAY REMAIN IN PLACE ONLY DURING DAYLIGHT HOURS.

SIGNS ARE TO BE PLACED 6' TO 12' OFF OF THE PAVED SURFACE UNLESS OTHERWISE DIRECTED.

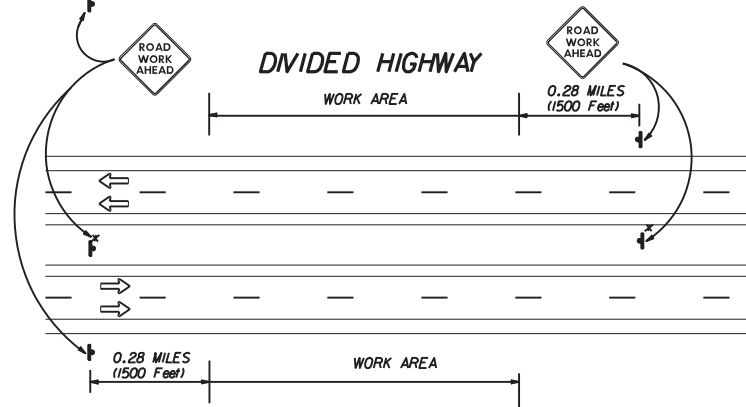
ROAD WORK AHEAD SIGNS SHOWN AS EXAMPLES. ONE OF THE FOUR TYPE SIGNS WILL BE USED AS DIRECTED.

* SIGNS IN THE MEDIAN ARE REQUIRED WHEN WORK OCCURS IN MEDIAN

UNDIVIDED HIGHWAY OR FRONTAGE ROAD



DIVIDED HIGHWAY



TRAFFIC CONTROL PLAN FOR WORK OFF OF THE PAVED SURFACE.

GENERAL NOTES FOR WORK ZONE SIGNS

- Contractor shall install and maintain signs in a straight and plumb condition and/or as directed by the Engineer.
- Wooden sign posts shall be painted white.
- Barricades shall NOT be used as sign supports.
- Nails shall NOT be used to attach signs to any support.
- All signs shall be installed in accordance with the plans or as directed by the Engineer. Signs shall be used to regulate, warn, and guide the traveling public safely through the work zone.
- The Contractor may furnish either the sign design shown in the plans or in the "Standard Highway Sign Designs for Texas" (SHSD). The Engineer/Inspector may require the Contractor to furnish other work zone signs that are shown in the TMUTCD but may have been omitted from the plans. Any variation in the plans shall be documented by written agreement between the Engineer and the Contractor's Responsible Person. All changes must be documented in writing before being implemented. This can include documenting the changes in the Inspector's TxDOT diary and having both the Inspector and Contractor initial and date the agreed upon changes. The additional signs requested by the Engineer/Inspector shall not be subsidiary.
- The Contractor shall furnish sign supports listed in the "Compliant Work Zone Traffic Control Device List" (CWZTCD). The Contractor shall install the sign support in accordance with the manufacturer's recommendations. If there is a question regarding installation procedures, the Contractor shall furnish the Engineer a copy of the manufacturer's installation recommendations so that the Engineer can verify the correct procedures are being followed.
- The Contractor is responsible for sign installations and replacing signs with damaged or cracked substrates and/or damaged or marred reflective sheeting as directed by the Engineer/Inspector.
- Identification markings may be shown only on the back of the sign substrate. The maximum height of letters and/or company logos used for identification shall be 1".
- The Contractor shall replace damaged wood posts. New or damaged wood sign posts shall not be spliced.

Duration of Work (as defined by the "Texas Manual on Uniform Traffic Control Devices" Part VII)

- The Contractor is responsible for ensuring the sign support and substrate meets crashworthiness. For mowing operation all signs and supports are Short-term Duration for daytime work.
- The Contractor shall furnish the sign sizes shown on this sheet or as directed by the Engineer.

SIGN SUBSTRATES

- The Contractor shall ensure that the sign substrate is allowed for the type of sign support that is being used. The CWZTCD lists each substrate that can be used on the different types and models of sign supports.
- "Mesh" type materials are NOT an approved sign substrate.
- All wooden individual sign panels fabricated from 2 or more pieces shall have one or more plywood cleat, 1/2" thick by 6" wide, fastened to the back of the sign and extending fully across the sign. The cleat shall be attached to the back of the sign using wood screws that do not penetrate the face of the sign panel. The screws shall be placed on both sides of the splice and spaced at 6" centers. The Engineer may approve other methods of splicing the sign faces.

REFLECTIVE SHEETING

- Reflectorized signs shall be constructed of sheeting meeting the color and retro-reflectivity requirements of DMS-8300 or DMS-8310. The DMS specifications can be accessed from the following web address:
http://manuals.dot.state.tx.us:80/dynaweb/colmates/@Generic_CollectionView;cs=default;ts=default
- White sheeting, meeting the requirements of DMS-8300 Type C (High Specific Intensity), shall be used for signs with white background and channelizing devices.
- Orange sheeting, meeting the requirements of DMS-8300 Type E (Fluorescent Prismatic), shall be used for signs with orange backgrounds.

SIGN LETTERS

- All sign letters and numbers shall be clear, and open rounded type uppercase alphabet letters as approved by the Federal Highway Administration (FHWA) and as published in the "Standard Highway Sign Design for Texas" manual. Signs, letters and numbers shall be of first class workmanship in accordance with Department Standards and Specifications.

REMOVING OR COVERING

- Signs should be removed or completely covered when not mowing.
- Duct tape or other adhesive material shall NOT be affixed to a sign face.
- Signs and supports shall be removed by the end of the day.

SIGN SUPPORT WEIGHTS

- Where sign supports require the use of weights to keep from turning over, the use of sandbags with dry cohesionless sand is recommended.
- The sandbags will be tied shut to keep the sand from spilling and to maintain a constant weight.
- Rock, concrete, iron, steel or other solid objects will not be permitted for use as sign support weights.
- Sandbags should weigh a minimum of 35 lbs and a maximum of 50 lbs.
- Sandbags shall be made of a durable material that tears upon vehicular impact.
- Rubber (such as tire inner tubes) shall NOT be used for sandbags.
- Rubber ballasts (such as those used with cones or edgeline channelizers) shall NOT be used as sign support weights.
- Sandbags shall only be placed along or laid over the base supports of the traffic control device and shall not be suspended above ground level or hung with rope, wire, chains or other fasteners. Sandbags shall be placed along the length of the skids to weigh down the sign supports.
- Sandbags shall NOT be placed under the skid and shall not be used to level sign supports placed on slopes.

CONTRACTOR REQUIREMENTS FOR MAINTAINING PERMANENT SIGNS WITHIN THE PROJECT LIMITS

Any sign, sign support or traffic control device that is struck or damaged by the Contractor or his/her construction equipment shall be replaced or repaired as soon as possible by the Contractor at the Contractor's expense.

Only pre-qualified products shall be used. A copy of the "Compliant Work Zone Traffic Control Devices List" (CWZTCD) describes pre-qualified products and their sources and may be obtained by contacting:

Standards Engineer
Traffic Operations Division - TE
Texas Department of Transportation
125 East 11th Street
Austin, Texas 78701-2483
Phone (512) 416-3120
Fax (512) 416-3299

Instructions to locate the "CWZTCD" on TxDOT website are:

Start at website - www.dot.state.tx.us
Click on "About TxDOT",
Click on "Organizational Chart",
Click on "Traffic Operations Box",
Click on "Compliant Work Zone Traffic Control Devices",
Click on "View PDF".
This site is printable.

Texas Department of Transportation
Maintenance Division
Standard Plans

ROADSIDE TRAFFIC CONTROL PLAN

SHEET 1 OF 1 RS-TCP-05 NOT TO SCALE

FILE: RSTCP05.DGN	DW: LJB	CK: JG	DW: -	CK: -	NEG NO.: -
© TxDOT FEBRUARY 2005		STATE DISTRICT	FEDERAL REGION	FEDERAL AID PROJECT	SHEET
REVISED: September 17, 2004	BWD	N/A	RMC - 638966001	7	
REVISED: FEBRUARY 2, 2005 Sign placement in TCP		COUNTY	CONTROL SECTION	JOB	HIGHWAY
		COMANCHE	6389 66	001	US067