

INDEX OF SHEETS

SHEET NO. DESCRIPTION

GENERAL

- 1 TITLE SHEET
- 2 GENERAL NOTES
- 3 QUANTITY SHEET

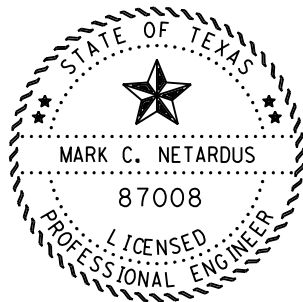
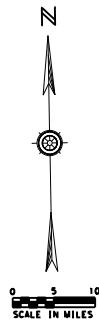
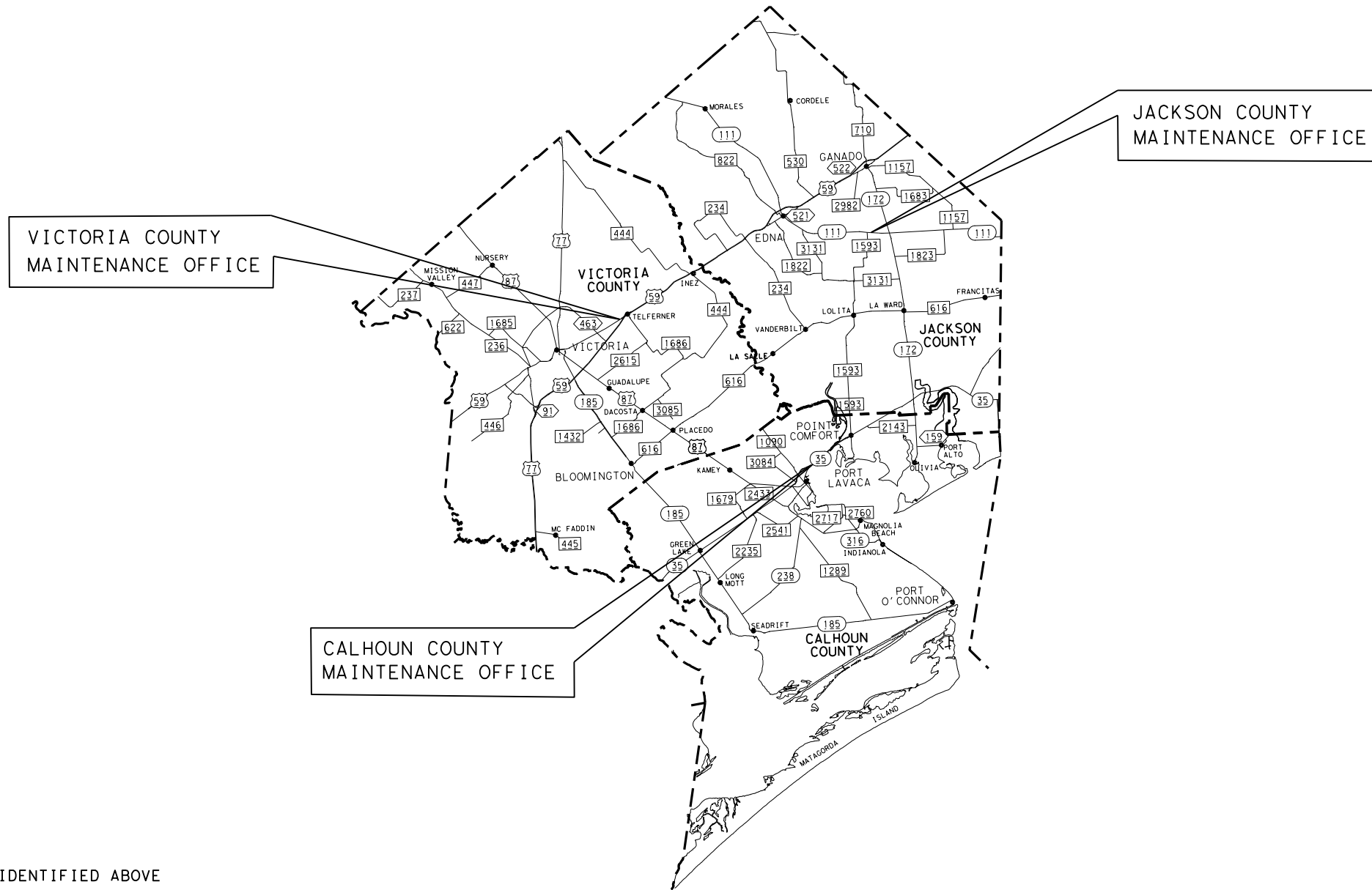
STATE OF TEXAS
TEXAS DEPARTMENT OF TRANSPORTATION

WORK CONSISTING OF
HYDRAULIC CEMENT DELIVERY
(MATERIALS ONLY)

PROJECT NO: MMC 6380-48-001
COUNTY: VICTORIA CO, ETC.

FED. RD. DIV. NO.	PROJECT NO.	SHEET NO.
	MMC 6380-48-001	1
STATE	STATE DIST.	COUNTY
TEXAS	YKM	VICTORIA, ETC.
CONT.	SECT.	JOB
		HIGHWAY NO.

YOAKUM DISTRICT



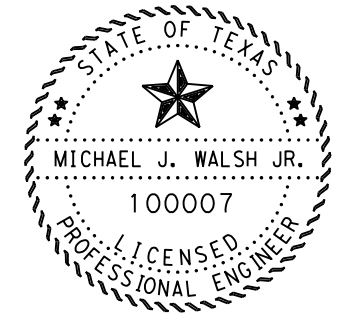
THE STANDARD SHEETS SPECIFICALLY IDENTIFIED ABOVE HAVE BEEN SELECTED BY ME OR UNDER MY RESPONSIBLE SUPERVISION AS BEING APPLICABLE TO THIS PROJECT.

Mark C. Netardus P.E. 4-28-21
MAINTENANCE ENGINEER DATE

CALHOUN, JACKSON
AND VICTORIA COUNTIES

YOAKUM DISTRICT

EXCEPTIONS: NONE
EQUATIONS: NONE
RAILROAD CROSSING: NONE



APPROVED FOR LETTING: 4/28/2021

Michael J. Walsh Jr. P.E.

DIRECTOR OF OPERATIONS

SPECIFICATIONS ADOPTED BY THE TEXAS DEPARTMENT OF TRANSPORTATION, NOVEMBER 1, 2014 AND SPECIFICATION ITEMS LISTED AND DATED AS FOLLOWS, SHALL GOVERN ON THIS PROJECT:



© 2021 by Texas Department of Transportation; all rights reserved.

Project Number: MMC 6380-48-001

County: VICTORIA COUNTY, ETC.

GENERAL NOTES:

This is a contract for supplying material on an as needed basis.

Bid price should include furnishing material and delivery within the county or to designated location(s) specified.

The Maintenance Supervisor's contact information for the following counties are:

Victoria County -- ST 1 -- Will Sorensen: 361-407-9024 or Will.Sorensen@txdot.gov

Jackson County -- ST 2 -- Jeff Gerdes: 361-782-5917 or Jeffrey.Gerdes@txdot.gov

Calhoun County -- ST 3 -- Jon Adame: 361-935-3656 or Jon.Adame@txdot.gov

The corresponding Maintenance Supervisor will be the primary point of contact for this contract. The Maintenance Supervisor will work in conjunction with the Contractor to establish an agreement on the specifics of the material delivery.

Contractor questions on this project are to be addressed to the following individual(s):

Mark Netardus Mark.Netardus@txdot.gov

Mike Walsh Mike.Walsh@txdot.gov

Contractor questions will be accepted through email, phone, and in person by the above individuals.

All contractor questions will be reviewed by the Engineer. Once a response is developed, it will be posted to TxDOT's Public FTP at the following Address:

[https://ftp.dot.state.tx.us/pub/txdot-info/Pre-Letting Responses/](https://ftp.dot.state.tx.us/pub/txdot-info/Pre-Letting%20Responses/)

All questions submitted that generate a response will be posted through this site. The site is organized by District, Project Type (Construction or Maintenance), Letting Date, CCSJ/Project Name.

The contractor is responsible for furnishing and delivering the hydraulic cement to the specified locations listed above. The delivery hours will be Monday through Thursday 7:00 AM to 5:00 PM.

Furnish a certified copy of the legal gross weight of each vehicle hauling materials by weight and certified measurements for all trucks hauling material by volume.

Project Number: MMC 6380-48-001

County: VICTORIA COUNTY, ETC.

ITEM 4: SCOPE OF WORK

If agreed upon in writing by both parties to the contract, the contract may be extended for an additional period of time not to exceed the original contract time period. The extended contract may be for additional quantities up to the original bid quantities plus any quantities added by an approved change order. The extensions shall meet the terms and conditions of the original contract plus any approved terms and conditions made by previously approved change orders.

ITEM 8012: HYDRAULIC CEMENT (MATERIAL ONLY)

Furnish trucks capable of distributing the cement uniformly to the roadway when delivered by the ton.

There will be a minimum order of a truckload when ordering cement by the bag.



CONTROLLING PROJECT ID 6380-48-001

DISTRICT Yoakum
HIGHWAY US0059

COUNTY Victoria

QUANTITY SHEET

CONTROL SECTION JOB				6380-48-001		TOTAL EST.	TOTAL FINAL
PROJECT ID				A00176250			
COUNTY				Victoria			
HIGHWAY				US0059			
ALT	BID CODE	DESCRIPTION	UNIT	EST.	FINAL		
	8012-6001	HYDRAULIC CEMENT(TY I)(DEL)(SITE 1)	TON	300.000		300.000	
	8012-6002	HYDRAULIC CEMENT(TY I)(DEL)(SITE 2)	TON	300.000		300.000	
	8012-6003	HYDRAULIC CEMENT(TY I)(DEL)(SITE 3)	TON	300.000		300.000	
	8012-6020	HYDRAULIC CEMENT(TY I)(DEL)(47LBS)(ST1)	BAG	1,050.000		1,050.000	
	8012-6021	HYDRAULIC CEMENT(TY I)(DEL)(47LBS)(ST2)	BAG	4,200.000		4,200.000	
	8012-6022	HYDRAULIC CEMENT(TY I)(DEL)(47LBS)(ST3)	BAG	1,050.000		1,050.000	
	8012-6024	HYDRAULIC CEMENT(TY I)(DEL)(94LBS)(ST1)	BAG	525.000		525.000	
	8012-6025	HYDRAULIC CEMENT(TY I)(DEL)(94LBS)(ST2)	BAG	525.000		525.000	
	8012-6026	HYDRAULIC CEMENT(TY I)(DEL)(94LBS)(ST3)	BAG	525.000		525.000	